

ENDAU ROMPIN



a malaysian heritage

contents

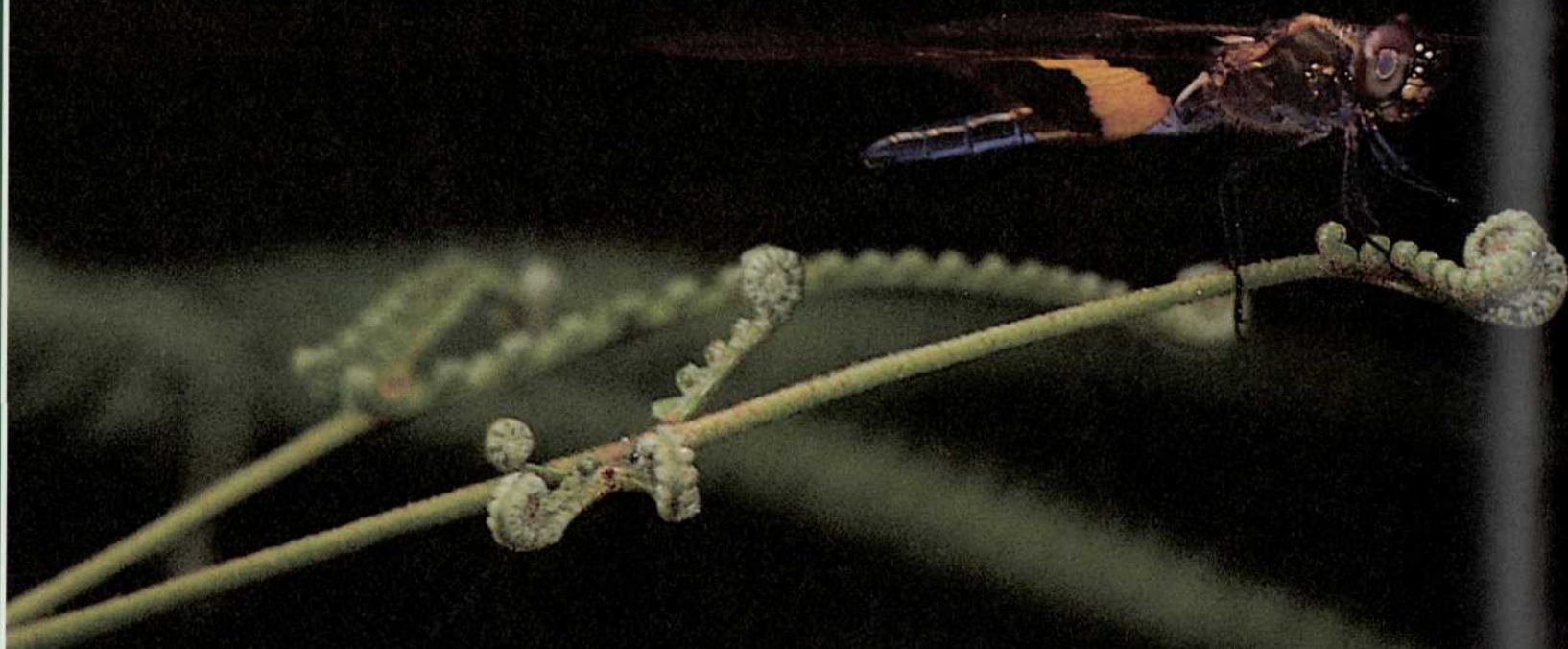
ACKNOWLEDGEMENTS 2

INTRODUCTION 6
Dr Salleh Mohd Nor

FOREWORD 7
YTM Tunku Abdul Rahman Putra Al-Haj

THE ENDEAVOUR 9
The Expedition Gets Under Way
The Endau-Rompin Area
The Objectives

LANDSCAPES OF ENDAU-ROMPIN 23
Volcanic Crystals
Sand and Clay
Ancient Life
The Power of the Water



INTO THE FOREST 41

Canopy of Trees
The Forest Shade
On the Forest Floor
The Hill Slopes
Medicinal Plants

ALONG THE RIVER COURSES 83

Plants in the River
Frogs and Fishes
Journeys
 Gunung Beremban
 Buaya Sangkut Waterfalls
 The Plateau and the Falls
 Rafting down Sungai Endau
 Up the Kinchin
 A Walk from the Selai to the Jasin

EXCITING DISCOVERIES 107

More than 30 of the expedition's findings including new species, unusual habitats and curious interactions between plants and animals in the forests of Endau-Rompin

RHYTHMS OF THE FOREST 137

Light and Dark
Leaf and Bud
The Eternal Forest
Wet and Dry

THE EXPEDITION IN SWING 169

Work in Progress
Coming of the Monsoon
Orang Hulu
Folklore
From the Log Book

THE WAY AHEAD 193

Realities
What Next for Endau-Rompin?
Rain Forest Conservation

APPENDICES 207

Credits
Major Donors
Participants

INDEX 216