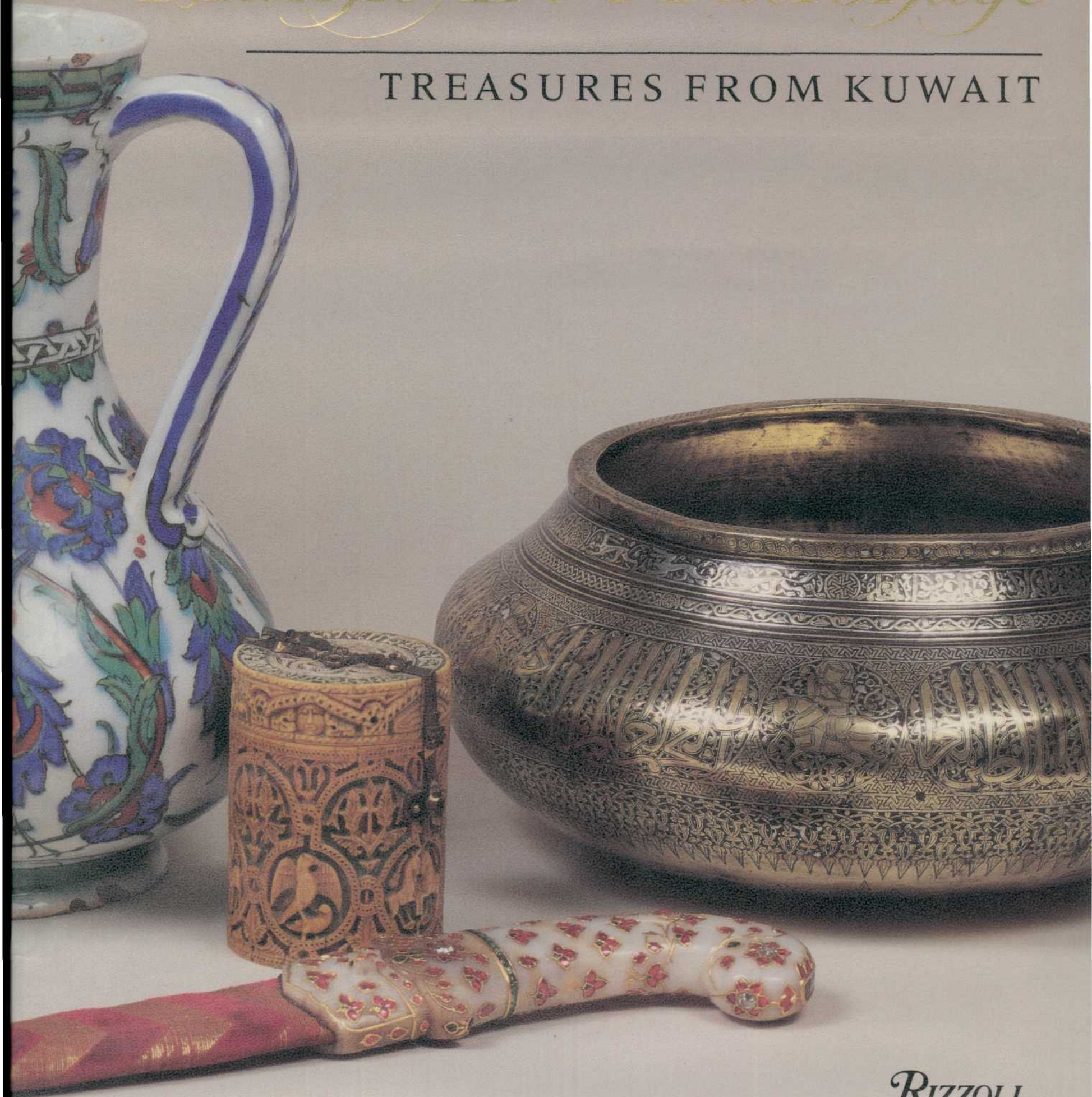


# *Islamic Art & Patronage*

TREASURES FROM KUWAIT



RIZZOLI  
NEW YORK

# Contents

- 9 **Foreword**  
*Hussah Sabah al-Salem al-Sabah*
- 11 **Preface**  
*Esin Atıl*
- 15 **Acknowledgments**  
*Ann Van Devanter Townsend*
- 17 **Note to the Reader**
- 18 **Map**
- 21 **An Introduction to the al-Sabah Collection**  
*Marilyn Jenkins*
- 27 **Patronage in Islamic Art**  
*Oleg Grabar*
- 41 **Early Islam: Emerging Patterns (622–1050)**  
*Estelle Whelan*
- Catalogue Entries 1–23**  
*Ghada H. Qaddumi with Manuel Keene*
- 95 **The Classical Period (1050–1250)**  
*Jonathan M. Bloom*
- Catalogue Entries 24–46**  
*Ghada H. Qaddumi with Manuel Keene*
- 151 **The Postclassical Period (1250–1500)**  
*Sheila S. Blair*
- Catalogue Entries 47–71**  
*Ghada H. Qaddumi with Manuel Keene*
- 215 **Late Islam: The Age of Empires (1500–1800)**  
*Walter B. Denny*
- Catalogue Entries 72–107**  
*Ghada H. Qaddumi with Manuel Keene*
- 300 **Notes**
- 306 **Dynastic Tables**
- 308 **Concordance**
- 309 **Suggested Readings**
- 311 **Index**