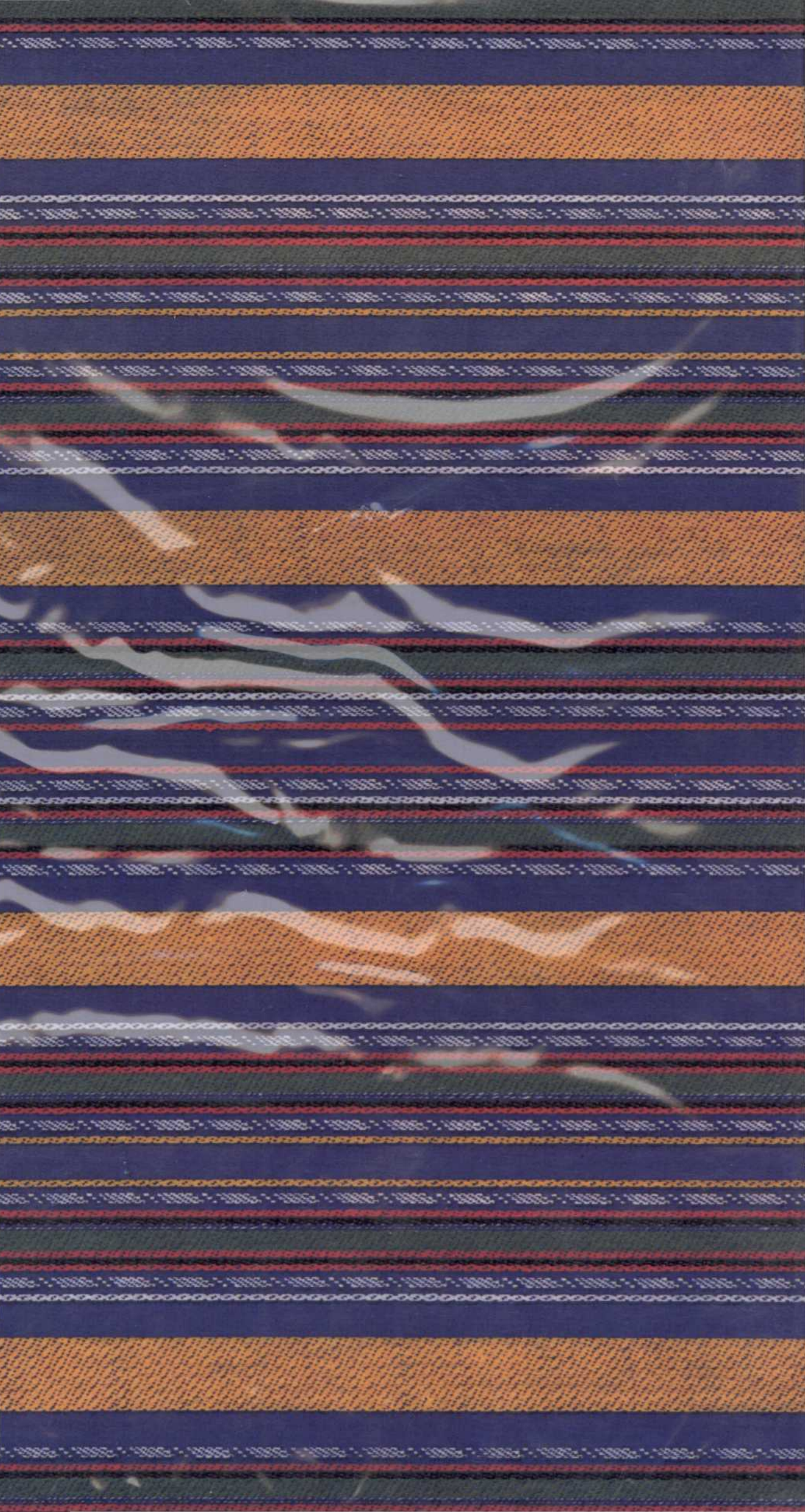


# PRINCIPLES



# Contents

PREFACE BY

**Ferdinand E. Marcos**

President of the Republic of the Philippines

8

INTRODUCTION TO THE PHILIPPINES

10

## Northern Luzon

16

INTRODUCTION TO

## Manila

by **Imelda Romualdez Marcos**

First Lady of the Philippines and Governor of Metropolitan Manila

42

## Southern Luzon

66

## Visayas

80

## Mindanao

98

## Palawan and the Sulu Archipelago

112

PHOTOGRAPHING THE PHILIPPINES

by **Larry Secrist**

124

AFTERWORD

125

PHOTOGRAPHIC CREDITS

128