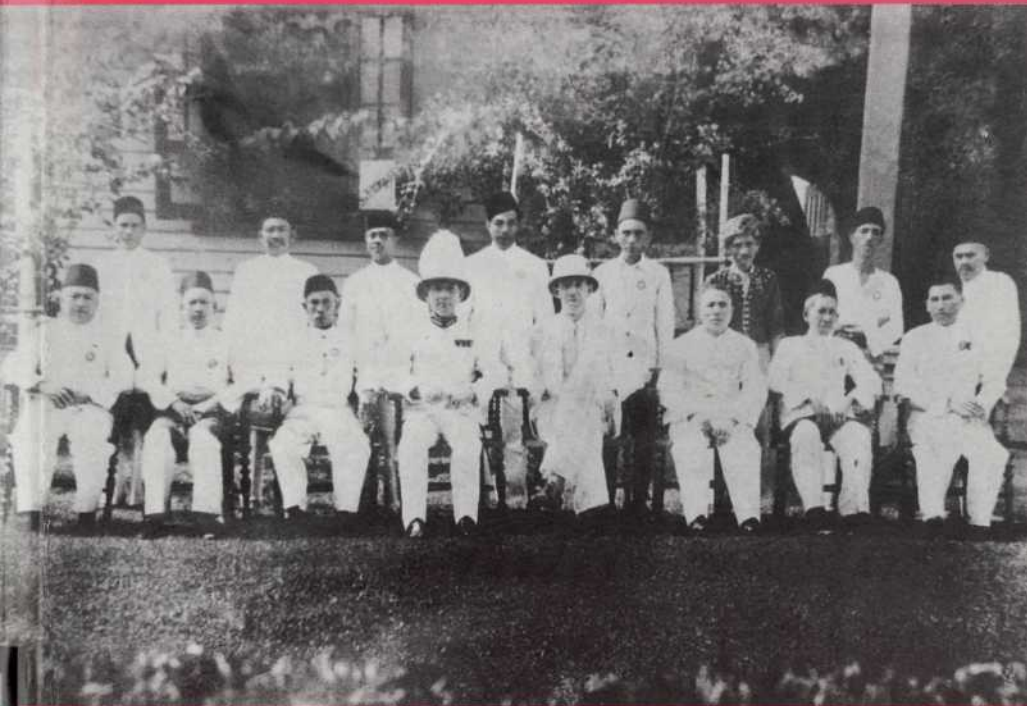


THE MAKING OF SABAH 1865-1941

THE DYNAMICS OF INDIGENOUS SOCIETY



D. S. RANJIT SINGH

CONTENTS

Figures	ix
Tables	ix
Maps	x
Plates	xi
Preface	xiii
Acknowledgements	xv
List of Abbreviations	xvii
1 : The Indigenous People of Sabah: Classification and Distribution	1
2 : <i>The Suku</i>	31
3 : The Brunei <i>Jajahan</i> Structure on the West Coast	57

The Making Of Sabah

4 :		
	The <i>Datu</i> System of Sulu on Sabah's East Coast	91
5 :		
	The Genesis of Western Rule, 1865-1881	113
6 :		
	The Establishment of the British North Borneo Company	135
7 :		
	Indigenous Reaction to Company Rule and the Mat Salleh Uprisings, 1882-1903	175
8 :		
	Administrative Consolidation and the Rundum Rebellion, 1900-1915	215
9 :		
	Capitalist Enterprise and Indigenous Society, 1900-1941	239
10 :		
	The Strengthening of Indigenous Institutions of Authority, 1900-1941	255
11 :		
	The Native Chiefs' Advisory Council, 1915-1941	283
12 :		
	Retrospect	299
	Glossary	315
	Bibliography	317
	Index	335

FIGURES

Figure 1 :		
List of Native Members of the ACNA in 1915		284
Figure 2 :		
Composition of Members of the NCAC 1915-1938		292

TABLES

1 :		
The Population of Sabah 1891-1991		27
2 :		
The Indigenous Population of Sabah by Detailed Major Ethnic Groups 1991		28

LIST OF MAPS

Map 1 : Major Rivers and Place - Names of Sabah	xvi
Map 2 : Languages of Sabah	10
Map 3 : Distribution of the Indigenous Population of Sabah in the 1870's	29
Map 4 : Sabah-Spheres of Control in the 19th Century	30
Map 5 : Major <i>Suku</i> Communities of Sabah in the 19th Century Beyond The Brunei and Sulu Spheres of Control	33
Map 6 : Major Brunei <i>Jajahan</i> in Western Sabah in the 1870's	64
Map 7 : Gaya Settlement 1883	192
Map 8 : Mat Salleh's Defences At Tambunan As of January 1900	199
Map 9 : Map And Design of Mat Salleh's Fort At Tambunan As of January/February 1900	200