

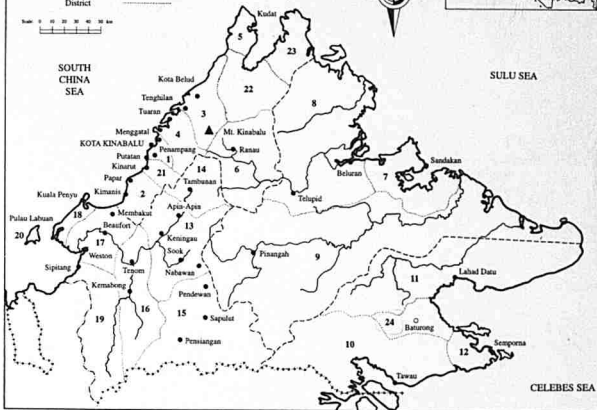
# SABAH

## KEY

Boundaries, International	—+—+—+—+—+—+—
Inter-State	- - - - -
Residency	- - - - -
District	—————

Scale 0 10 20 30 40 50 km

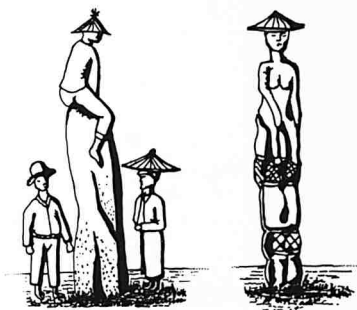
Pulau Balembangan Pulau Banggi



## NAMES OF DISTRICTS

- |                  |                 |                 |
|------------------|-----------------|-----------------|
| 1. KOTA KINABALU | 9. KINABATANGAN | 17. BEAUFORT    |
| 2. PAPAR         | 10. TAWAU       | 18. KUALA PENYU |
| 3. KOTA BELUD    | 11. LAHAD DATU  | 19. SIPITANG    |
| 4. TUARAN        | 12. SEMPORNA    | 20. LABUAN      |
| 5. KUDAT         | 13. KENINGAU    | 21. PENAMPANG   |
| 6. RANAU         | 14. TAMBUNAN    | 22. KOTA MARUDU |
| 7. SANDAKAN      | 15. PENSIANGAN  | 23. PITAS       |
| 8. LABUK SUGUT   | 16. TENOM       | 24. KUNAK       |

TRADITIONAL  
STONE AND WOOD MONUMENTS  
OF SABAH



# TRADITIONAL STONE AND WOOD MONUMENTS OF SABAH

**Peter R. Phelan**

with photographs by the author

*Edited by*

K.M. Wong



**PUSAT KAJIAN BORNEO**  
( **CENTRE FOR BORNEO STUDIES** )  
**YAYASAN SABAH**  
Kota Kinabalu

1997

*Published by*

**PUSAT KAJIAN BORNEO**  
(CENTRE FOR BORNEO STUDIES),  
Yayasan Sabah,  
P.O. Box 11201,  
Telok Likas,  
88846 Kota Kinabalu, Sabah, Malaysia.

Copyright © 1997 Peter R. Phelan

All rights reserved. No part of this publication may be reproduced, stored in a retrieval system, or transmitted in any form or by any means, electronic, mechanical, photo-copying, recording, or otherwise, without the prior permission of the copyright owners.

First published 1997

TRADITIONAL STONE AND WOOD MONUMENTS OF SABAH

*by* Peter R. Phelan

*Edited by* K.M. Wong

Design and layout

*by* C.L. Chan and Chua Kok Hian

Perpustakaan Negara Malaysia Cataloguing-in-Publication Data

Phelan, Peter R.

Traditional stone and wood monuments of Sabah / Peter R.

Phelan ; edited by K.M. Wong.

Bibliography: p. 137-140

Includes index

ISBN 983-9722-03-4

1. Monuments—Sabah. 2. Sabah—Antiquities. 3. Sabah—  
Civilization. I. Wong, K.M. II. Title.

959.521

Printed in Malaysia

M  
959.521  
PHE

M 967613<sup>r</sup>

2 FEB 1999

Perpustakaan Negara  
Malaysia

## CONTENTS

---

Foreword	vii
Preface	ix
Acknowledgements	xi

### Introduction 1

#### Chapter 1. Menhirs in areas of wet rice cultivation

The Penampang District	7
Menhirs at Kampong Tebilong, Tambunan	13

#### Chapter 2. Oath Stones or *Batu Sumpah*

Oath Stones at <i>tamu</i> grounds	23
Stones erected to end inter-village feuds	27
Confirmation of fidelity to local <i>adat</i>	30
Oath Stones associated with Native Courts	38
Stone symbols of allegiance	42

#### Chapter 3. Guardian Stones: *Tingolig*

Guardian Stones described by I.H.N. Evans	47
Two <i>tingolig</i> in Tambunan	48
<i>Batu sinaluang</i> (stones that scare away illness)	50

#### Chapter 4. Burial Stones

Cemetery Stones at Kampong Suromboton, Tenghilan	53
<i>Gintutun Do Mohoing</i>	55
The menhir at Kampong Sukong, Tambunan	58
Memorial stone for a person buried far from home	59

#### Chapter 5. Stones commemorating legendary figures

<i>Batu Bajau</i>	61
<i>Batu Bogu</i>	62
<i>Batu Bobolian</i>	64
<i>Batu Gombongan</i>	66

#### Chapter 6. Memorial Stones for notable events

<i>Watu Tinuridung</i> at Kampong Sunsuron	69
The <i>Batu Tungaang</i> of Nosoob	71
Gumantung's Stone	72