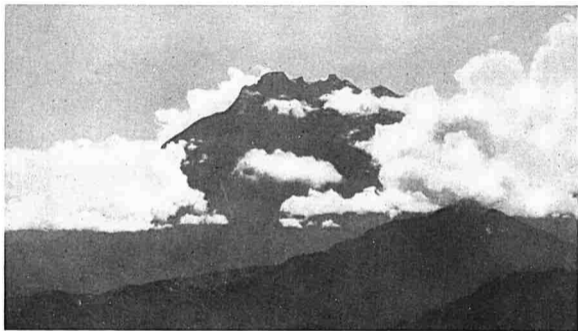


KINABALU



(Frontispiece)

MOUNT KINABALU.

KINABALU

THE HAUNTED MOUNTAIN OF BORNEO

*AN ACCOUNT OF ITS ASCENT
ITS PEOPLE, FLORA AND FAUNA*

By

MAJOR C. M. ENRIQUEZ, F.R.G.S.

(2/20 BURMA RIFLES)

*Author of 'The Pathan Borderland,' 'Races of Burma,'
'A Burmese Arcady,' etc.*

WITH PHOTOGRAPHS
AND A MAP

LONDON

H. F. & G. WITHERBY
326 HIGH HOLBORN, W.C.

1927



h1
915 9521
ENR

49736

*Printed for Messrs H. F. & G. Witherby
by J. & J. Gray, Edinburgh*

29 APR 1976

Perpustakaan Negara
Malaysia

THIS BOOK
IS AFFECTIONATELY DEDICATED TO

SAU NAN

A KACHIN OF LAHTAW HPAHKUM, BHAMO, BURMA,
AND FOR MANY YEARS
MY DEVOTED AND TRUSTED FRIEND