



KEMENTERIAN EKONOMI
JABATAN PERANGKAAN MALAYSIA

ISSN 1675-4344



9 771675 434001

INDEKS PERDAGANGAN LUAR NEGERI

External Trade Indices

2023 Mac
March



JABATAN PERANGKAAN MALAYSIA
DEPARTMENT OF STATISTICS MALAYSIA



KEMENTERIAN EKONOMI
JABATAN PERANGKAAN MALAYSIA

**INDEKS PERDAGANGAN LUAR NEGERI
EXTERNAL TRADE INDICES
(2010=100)**

**MAC 2023
MARCH 2023**

Pemakluman

Jabatan Perangkaan Malaysia (DOSM) sedang menjalankan Banci Ekonomi pada tahun 2023. DOSM amat menghargai kerjasama daripada responden untuk memberikan maklumat kepada DOSM serta menjayakan banci ini. Sila layari www.dosm.gov.my untuk Maklumat lanjut.

DOSM telah melancarkan OpenDOSM NextGen sebagai medium yang menyediakan katalog data dan visualisasi bagi memudahkan pengguna menganalisis pelbagai data. OpenDOSM NextGen ialah platform perkongsian data sumber terbuka dan boleh diakses melalui portal <https://open.dosm.gov.my>.

Dimaklumkan bahawa Kerajaan Malaysia telah mengistiharkan Hari Statistik Negara (MyStats Day) pada 20 Oktober setiap tahun. Tema sambutan MyStats Day adalah "Connecting the World with Data We Can Trust".

Announcement

The Department of Statistics Malaysia (DOSM) is conducting the Economic Census in 2023. DOSM greatly appreciates the cooperation of respondents to provide information and ensuring the success of this census. Please visit www.dosm.gov.my for more information.

DOSM has launched OpenDOSM NextGen as a medium that provides a catalogue of data and visualisation to facilitate users in analysing various data. OpenDOSM NextGen is an open source data sharing platform and accessible through <https://open.dosm.gov.my> portal.

Please be informed that the Government of Malaysia has declared National Statistics Day (MyStats Day) on October 20 each year. MyStats Day theme is "Connecting the World with Data We Can Trust".

**JABATAN PERANGKAAN MALAYSIA
DEPARTMENT OF STATISTICS MALAYSIA**

Diterbitkan dan dicetak oleh / *Published and printed by:*

Jabatan Perangkaan Malaysia
Department of Statistics, Malaysia

Blok C6, Kompleks C,
Pusat Pentadbiran Kerajaan Persekutuan
62514 Putrajaya,

MALAYSIA

Tel. : 03-8885 7000
Faks : 03-8888 9248
Portal : <https://www.dosm.gov.my>
Facebook / Twitter / Instagram: StatsMalaysia
Emel / *Email* : info@dosm.gov.my (pertanyaan umum / *general enquiries*)
data@dosm.gov.my (pertanyaan & permintaan data / *data request & enquiries*)

Harga / *Price* : RM5.00

Diterbitkan pada April 2023 / *Published on April 2023*

Hakcipta terpelihara / *All rights reserved.*

Tiada bahagian daripada terbitan ini boleh diterbitkan semula, disimpan untuk pengeluaran atau ditukar dalam apa-apa bentuk atau alat apa jua pun kecuali setelah mendapat kebenaran daripada Jabatan Perangkaan Malaysia.

Pengguna yang mengeluarkan sebarang maklumat dari terbitan ini sama ada yang asal atau diolah semula hendaklah meletakkan kenyataan berikut:

“Sumber: Jabatan Perangkaan Malaysia”.

No part of this publication may be reproduced or distributed in any form or by any means or stored in data base without the prior written permission from Department of Statistics, Malaysia.

Users reproducing content of this publication with or without adaptation should quote the following:

“Source: Department of Statistics, Malaysia.”

ISSN 1675 - 4344

KANDUNGAN

Contents

	<i>Muka Surat</i>
	<i>Page</i>
Kata Pengantar <i>Preface</i>	i - ii
Ringkasan Penemuan <i>Summary of Findings</i>	iii - xv
Carta & Jadual Statistik <i>Statistical Tables & Charts</i>	
1.1 Carta Indeks Nilai Seunit Eksport dan Import <i>Export and Import Unit Value Indices Charts</i>	1
1.2 Carta Peratus Perubahan Bulan ke Bulan Indeks Nilai Seunit Eksport dan Import <i>Month-on-month Percentage Change in Export and Import Unit Value Indices Charts</i>	1
1.3 Carta Peratus Perubahan Tahun ke Tahun Indeks Nilai Seunit Eksport dan Import <i>Year-on-year Percentage Change in Export and Import Unit Value Indices Charts</i>	2
2.1 Carta Indeks Volum Eksport dan Import <i>Export and Import Volume Indices Charts</i>	2
2.2 Carta Peratus Perubahan Bulan ke Bulan Indeks Volum Eksport dan Import <i>Month-on-month Percentage Change in Export and Import Volume Indices Charts</i>	3
2.3 Carta Peratus Perubahan Tahun ke Tahun Indeks Volum Eksport dan Import <i>Year-on-year Percentage Change in Export and Import Volume Indices Charts</i>	3
3.1 Carta Indeks Terma Perdagangan <i>Terms of Trade Index Charts</i>	4
3.2 Carta Peratus Perubahan Bulan ke Bulan Indeks Terma Perdagangan <i>Month-on-month Percentage Change in Terms of Trade Index Charts</i>	4
3.3 Carta Peratus Perubahan Tahun ke Tahun Indeks Terma Perdagangan <i>Year-on-year Percentage Change in Terms of Trade Index Charts</i>	5
1A Jadual Indeks Nilai Seunit bagi Eksport (2010=100) Mengikut Seksyen Barangan (S.I.T.C.) <i>Export Unit Value Index (2010=100) by Commodity Sections (S.I.T.C.) Tables</i>	6
1B Jadual Peratus Perubahan Bulan ke Bulan Indeks Nilai Seunit bagi Eksport (2010=100) Mengikut Seksyen Barangan (S.I.T.C.) <i>Month-on-month Percentage Change Export Unit Value Index (2010=100) by Commodity Sections (S.I.T.C.) Tables</i>	7
1C Jadual Peratus Perubahan Tahun ke Tahun Indeks Nilai Seunit bagi Eksport (2010=100) Mengikut Seksyen Barangan (S.I.T.C.) <i>Year-on-year Percentage Change Export Unit Value Index (2010=100) by Commodity Sections (S.I.T.C.) Tables</i>	8
2A Jadual Indeks Volum bagi Eksport (2010=100) Mengikut Seksyen Barangan (S.I.T.C.) <i>Export Volume Index (2010=100) by Commodity Sections (S.I.T.C.) Tables</i>	9
2B Jadual Peratus Perubahan Bulan ke Bulan Indeks Volum bagi Eksport (2010=100) Mengikut Seksyen Barangan (S.I.T.C.) <i>Month-on-month Percentage Change Export Volume Index (2010=100) by Commodity Sections (S.I.T.C.) Tables</i>	10

2C	Jadual Peratus Perubahan Tahun ke Tahun Indeks Volum bagi Eksport (2010=100) Mengikut Seksyen Barangan (S.I.T.C.) <i>Year-on-year Percentage Change Export Volume Index (2010=100) by Commodity Sections (S.I.T.C.) Tables</i>	11
3A	Jadual Indeks Nilai Seunit bagi Import (2010=100) Mengikut Seksyen Barangan (S.I.T.C.) <i>Import Unit Value Index (2010=100) by Commodity Sections (S.I.T.C.) Tables</i>	12
3B	Jadual Peratus Perubahan Bulan ke Bulan Indeks Nilai Seunit bagi Import (2010=100) Mengikut Seksyen Barangan (S.I.T.C.) <i>Month-on-month Percentage Change Import Unit Value Index (2010=100) by Commodity Sections (S.I.T.C.) Tables</i>	13
3C	Jadual Peratus Perubahan Tahun ke Tahun Indeks Nilai Seunit bagi Import (2010=100) Mengikut Seksyen Barangan (S.I.T.C.) <i>Year-on-year Percentage Change Import Unit Value Index (2010=100) by Commodity Sections (S.I.T.C.) Tables</i>	14
4A	Jadual Indeks Volum bagi Import (2010=100) Mengikut Seksyen Barangan (S.I.T.C.) <i>Import Volume Index (2010=100) by Commodity Sections (S.I.T.C.) Tables</i>	15
4B	Jadual Peratus Perubahan Bulan ke Bulan Indeks Volum bagi Import (2010=100) Mengikut Seksyen Barangan (S.I.T.C.) <i>Month-on-month Percentage Change Import Volume Index (2010=100) by Commodity Sections (S.I.T.C.) Tables</i>	16
4C	Jadual Peratus Perubahan Tahun ke Tahun Indeks Volum bagi Import (2010=100) Mengikut Seksyen Barangan (S.I.T.C.) <i>Year-on-year Percentage Change Import Volume Index (2010=100) by Commodity Sections (S.I.T.C.) Tables</i>	17
5A	Jadual Terma Perdagangan (2010=100) Mengikut Seksyen Barangan (S.I.T.C.) <i>Terms of Trade (2010=100) by Commodity Sections (S.I.T.C.) Tables</i>	18
5B	Jadual Peratus Perubahan Bulan ke Bulan Terma Perdagangan (2010=100) Mengikut Seksyen Barangan (S.I.T.C.) <i>Month-on-month Percentage Change Terms of Trade (2010=100) by Commodity Sections (S.I.T.C.) Tables</i>	19
5C	Jadual Peratus Perubahan Tahun ke Tahun Terma Perdagangan (2010=100) Mengikut Seksyen Barangan (S.I.T.C.) <i>Year-on-year Percentage Change Terms of Trade (2010=100) by Commodity Sections (S.I.T.C.) Tables</i>	20
6	Jadual Indeks Volum Eksport – Asal & Pelarasan Musim (2010=100) <i>Export unit Volume Index – Actual & Seasonally Adjusted (2010=100) Tables</i>	21
7	Jadual Indeks Volum Import – Asal & Pelarasan Musim (2010=100) <i>Import unit Volume Index – Actual & Seasonally Adjusted (2010=100) Tables</i>	22
Nota Teknikal <i>Technical Notes</i>		23-31
Lampiran <i>Appendix</i>		32-33

KATA PENGANTAR

Penerbitan Indeks Perdagangan Luar Negeri (IPLN) Malaysia merupakan penerbitan bulanan yang memaparkan Indeks Nilai Seunit, Indeks Volum dan Terma Perdagangan meliputi 10 seksyen utama barangan selaras dengan klasifikasi *United Nations "Standard International Trade Classification, Revision 4 (S.I.T.C. Rev 4)"*. IPLN disusun berdasarkan data perdagangan luar negeri Malaysia yang sebahagian besarnya diproses daripada borang pengikraran kastam.

IPLN telah disusun buat pertama kalinya dengan menggunakan tahun 1970 sebagai tahun asas (1970=100), seterusnya diasaskan semula kepada tahun 1999, 2005 dan 2010. Bermula bulan rujukan Januari 2018, penyusunan IPLN masih mengekalkan 2010 sebagai "tempoh rujukan indeks" dengan 2013 sebagai "tempoh rujukan wajaran". Bermula bulan rujukan Januari 2019, IPLN dikemaskini sekali lagi menggunakan tahun 2015 sebagai "tempoh rujukan wajaran" dan masih mengekalkan tahun asas yang sama 2010=100.

Objektif utama IPLN adalah untuk mengukur perubahan paras nilai seunit serta volum eksport dan import Malaysia.

Ringkasan penemuan utama dan jadual terperinci indeks di peringkat seksyen (S.I.T.C. 1 digit) dipaparkan pada bahagian pertama dan kedua penerbitan. Seterusnya, nota teknikal berkaitan dengan objektif, skop dan liputan, konsep dan definisi serta kaedah pengiraan yang digunakan dimuatkan pada bahagian terakhir penerbitan bagi meningkatkan kefahaman berkenaan dengan IPLN.

Jabatan Perangkaan Malaysia merakamkan setinggi-tinggi penghargaan kepada semua pihak yang telah menyumbang secara langsung dan tidak langsung dalam merealisasikan penerbitan ini. Setiap maklum balas dan cadangan daripada semua pihak untuk penambahbaikan penerbitan ini pada masa hadapan amat dihargai.

Dato' Sri Dr. Mohd Uzir Mahidin

Ketua Perangkawan Malaysia

April 2023

PREFACE

The publication of External Trade Index (ETI), Malaysia is a monthly publication which presents Unit Value Index, Volume Index and Terms of Trade covering 10 main sections of goods in line with classification of the United Nations "Standard International Trade Classification, Revision 4 (S.I.T.C. Rev 4)". ETI is compiled based on Malaysia external trade data which is in turn mainly processed from custom declaration forms.

The ETI was compiled for the first time using 1970 as the base year (1970=100), subsequently it has been rebased to 1999, 2005 and 2010. Commencing in reference month of January 2018, the compilation of ETI maintained 2010 as the "index reference period" with 2013 as "weight reference period". Effective with release of publication for January 2019, the ETI again updated using year 2015 as "weight reference period" while maintaining the same base year 2010=100.

The main objective of ETI is to measure the changes in the levels of unit values and volumes of Malaysia's merchandise imports and exports.

The summary of the main findings and the detailed index tables at sections (1-digit S.I.T.C) level are presented in the first and second part of this publication. Meanwhile, the technical notes on objectives, scope and coverage, concepts and definitions and the calculation techniques used are included in the final part of this publication to enhance understanding of the ETI.

The Department of Statistics Malaysia (DOSM) gratefully acknowledges the cooperation rendered by all parties who have contributed directly and indirectly in realising this publication. Every feedback and suggestions towards improving the future publication is highly appreciated.

Dato' Sri Dr. Mohd Uzir Mahidin
Chief Statistician Malaysia
April 2023



1. RINGKASAN PENEMUAN

SUMMARY OF FINDINGS



INDEKS PERDAGANGAN LUAR NEGERI

External Trade Indices

**MAC March
2023**

Indeks Nilai Seunit Eksport & Import masing-masing menunjukkan pertumbuhan positif 1.0 peratus dan 0.4 peratus

Export & Import Unit Value Indices showed a positive growth of 1.0 per cent and 0.6 per cent respectively

EKSPORT Exports

Nilai (RM Billion)
Value (RM Billion)

▲ 15.5%

FEB 23'
Feb 23 112.3

MAC 23'
Mar 23' 129.7

Minyak & Lemak Binatang & Sayur-sayuran Animal & Vegetable Oils & Fats

▲ 3.2%

Alat Jentera & Kelengkapan Pengangkutan Machinery & Transport Equipment

▲ 1.5%

Pelbagai Barang Keluaran Kilang Miscellaneous Manufactured Articles

▲ 0.8%

Minyak & Lemak Binatang & Sayur-sayuran Animal & Vegetable Oils & Fats

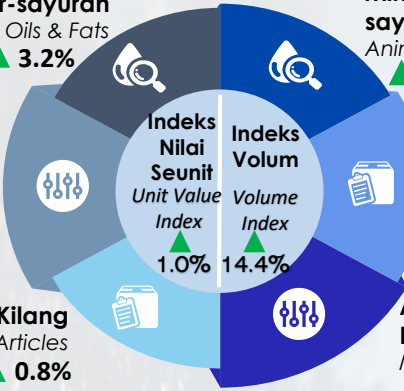
▲ 31.7%

Pelbagai Barang Keluaran Kilang Miscellaneous Manufactured Articles

▲ 23.8%

Alat Jentera & Kelengkapan Pengangkutan Machinery & Transport Equipment

▲ 14.3%



IMPORT Imports

Minyak & Lemak Binatang & Sayur-sayuran Animal & Vegetable Oils & Fats

▲ 3.0%

Makanan Food

▲ 0.5%

Alat Jentera & Kelengkapan Pengangkutan Machinery & Transport Equipment

▲ 0.49%

Pelbagai Barang Keluaran Kilang Miscellaneous Manufactured Articles

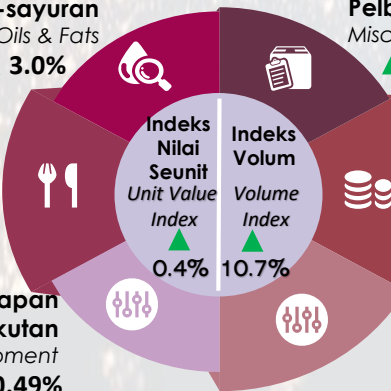
▲ 27.5%

Barang-barang Keluaran Kilang Manufactured Goods

▲ 25.9%

Alat Jentera & Kelengkapan Pengangkutan Machinery & Transport Equipment

▲ 16.5%



Nilai (RM Billion)
Value (RM Billion)

▲ 11.1%

FEB 23'
Feb 23' 92.7

MAC 23'
Mar 23' 103.0

TERMA PERDAGANGAN Terms of Trade

Alat Jentera & Kelengkapan Pengangkutan Machinery & Transport Equipment

▲ 1.0%

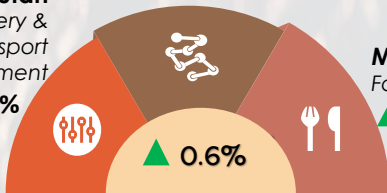
Bahan Kimia Chemicals

▲ 0.8%

Makanan Food

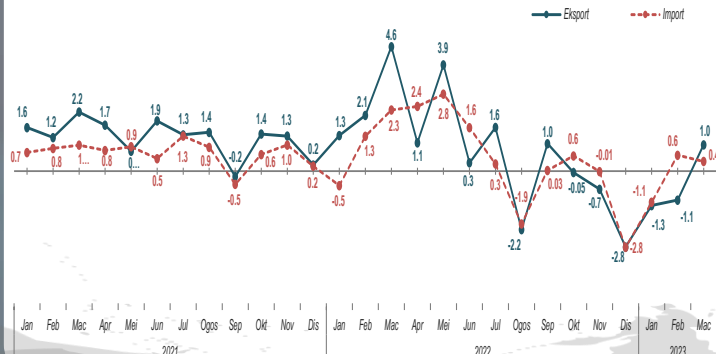
▲ 0.6%

▲ 0.6%



Peratus Perubahan Bulan ke Bulan bagi Indeks Nilai Seunit Eksport & Import Januari 2021 – Mac 2023

Month-on-Month Percentage Change of Export & Import Unit Value Indices
January 2021 – March 2023



INDEKS PERDAGANGAN LUAR NEGERI MAC 2023

PRESTASI PERDAGANGAN MALAYSIA

Jumlah dagangan Malaysia berkurangan 1.6 peratus pada Mac 2023, dengan nilai RM3.7 bilion dan mencatatkan jumlah dagangan RM232.7 bilion berbanding RM236.5 bilion pada bulan yang sama tahun sebelumnya. Eksport berkurangan 1.4 peratus kepada RM129.7 bilion pada Mac 2023. Import berjumlah RM103.0 bilion, susut 1.8 peratus tahun ke tahun. Imbangan dagangan kekal mencatat lebihan dengan nilai RM26.7 bilion dengan pertumbuhan 0.2 peratus tahun ke tahun.

Berbanding Februari 2023, kesemua eksport, import, jumlah dagangan dan lebihan dagangan menunjukkan peningkatan dengan pertumbuhan dua angka dengan masing-masing meningkat 15.5 peratus, 11.1 peratus, 13.5 peratus dan 36.4 peratus.

Jumlah dagangan, eksport dan import bagi suku tahun pertama (ST1) 2023 mencatatkan peningkatan berbanding ST1 2022. Eksport meningkat 2.8 peratus kepada RM354.6 bilion dan import dengan nilai RM290.2 bilion, berkembang 3.7 peratus. Jumlah dagangan meningkat 3.2 peratus kepada RM644.9 bilion. Sebaliknya, lebihan dagangan berkurangan 1.0 peratus daripada RM65.0 bilion kepada RM64.4 bilion.

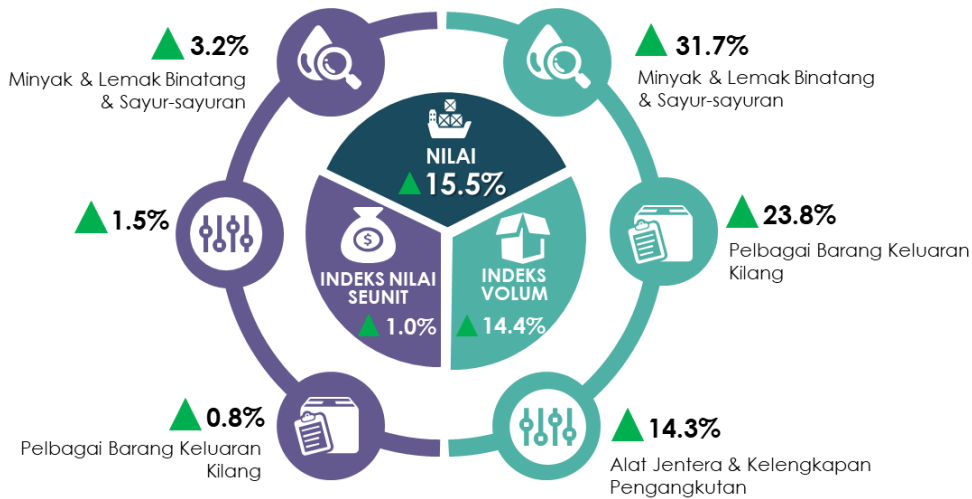
PERBANDINGAN BULAN KE BULAN

EKSPORT

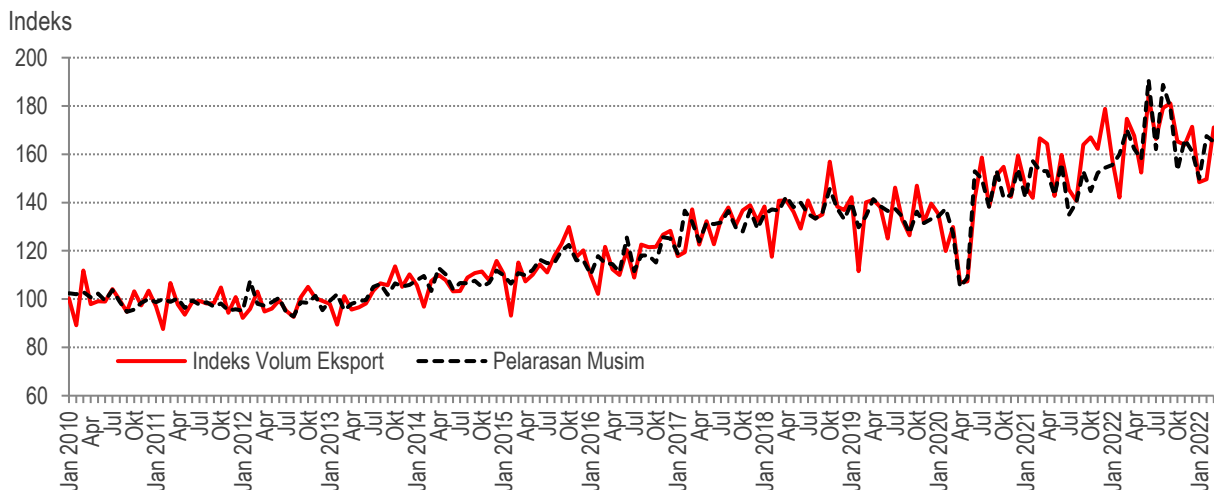
Perbandingan bulan ke bulan menunjukkan **indeks nilai seunit eksport** merekodkan peningkatan 1.0 peratus pada Mac 2023. Peningkatan ini disumbangkan oleh indeks minyak & lemak binatang & sayur-sayuran (+3.2%), alat jentera & kelengkapan pengangkutan (+1.5%) dan pelbagai barang keluaran kilang (+0.8%) (Paparan 1).

Begitu juga, **indeks volum eksport** meningkat 14.4 peratus pada Mac 2023, disumbangkan oleh kenaikan indeks minyak & lemak binatang & sayur-sayuran (+31.7%), pelbagai barang keluaran kilang (+23.8%) dan alat jentera & kelengkapan pengangkutan (+14.3%). Sebaliknya, **indeks volum eksport** pelarasan bermusim menurun 1.4 peratus daripada 167.4 mata kepada 165.2 mata (Carta 1).

PERBANDINGAN BULAN KE BULAN



Paparan 1: Prestasi Nilai Eksport, Indeks Nilai Seunit dan Indeks Volum serta Penyumbang Utama Indeks Nilai Seunit dan Indeks Volum Eksport



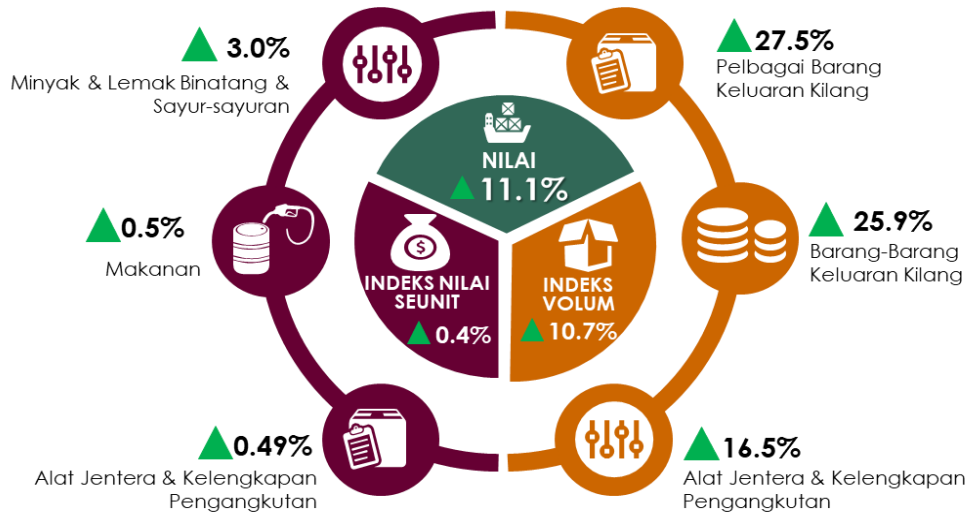
Carta 1: Indeks Volum Eksport - Asal & Pelarasan Musim

IMPORT

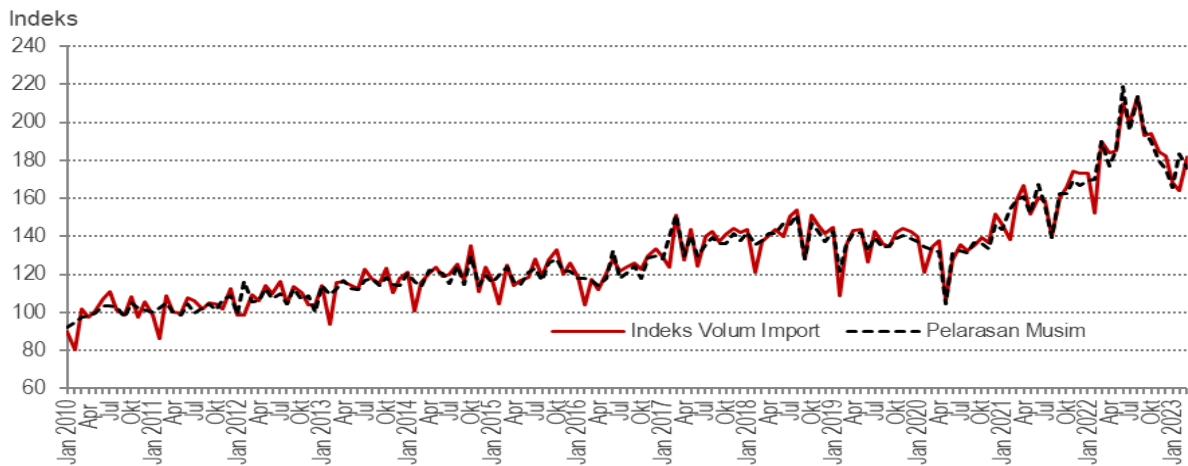
Indeks nilai seunit import meningkat 0.4 peratus pada Mac 2023. Peningkatan ini disumbangkan oleh indeks minyak & lemak binatang & sayur-sayuran (+3.0%), makanan (+0.5%) dan alat jentera & kelengkapan pengangkutan (+0.49%) (Paparan 2).

Indeks volum import menunjukkan trend positif 10.7 peratus pada Mac 2023 berbanding bulan sebelum. Peningkatan ini disumbangkan oleh kenaikan indeks pelbagai barang keluaran kilang (+27.5%), barang-barang keluaran kilang (+25.9%) dan alat jentera & kelengkapan pengangkutan (+16.5%). **Indeks volum import** pelarasan bermusim pada Mac 2023 menyusut 4.3 peratus daripada 183.6 mata kepada 175.7 mata (Carta 2).

PERBANDINGAN BULAN KE BULAN



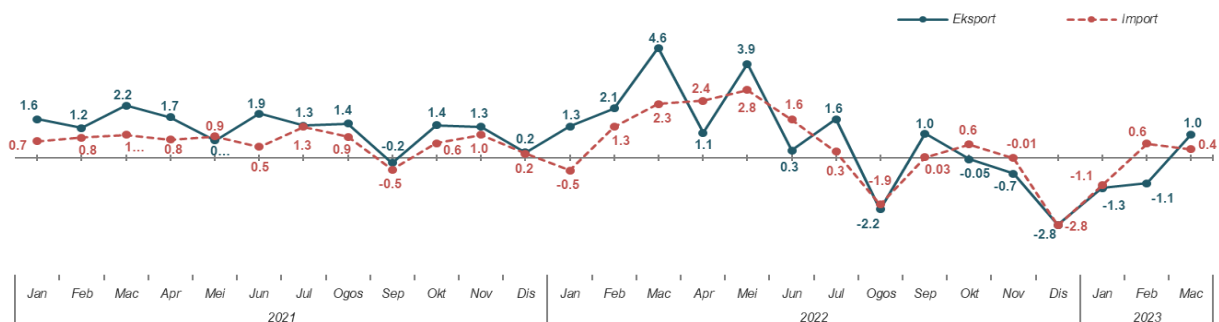
Paparan 2: Prestasi Nilai Import, Indeks Nilai Seunit dan Indeks Volum serta Penyumbang Utama Indeks Nilai Seunit dan Indeks Volum Import



Carta 2: Indeks Volum Import - Asal & Pelarasan Musim

SIRI MASA INDEKS NILAI SEUNIT EKSPORT & IMPORT

Perbandingan bulan ke bulan, **indeks nilai seunit eksport** kembali merekodkan pertumbuhan positif, manakala **indeks nilai seunit import** menyederhana pada Mac 2023.



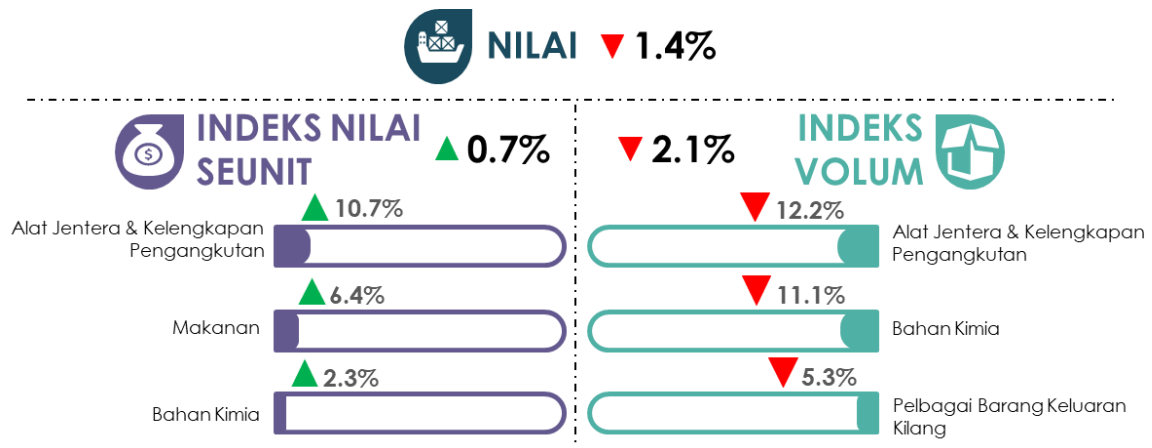
Carta 3: Peratus Perubahan Bulan ke Bulan bagi Indeks Nilai Seunit Eksport & Import Januari 2021 – Mac 2023

PERBANDINGAN TAHUN KE TAHUN

EKSPORT

Indeks nilai seunit eksport terus berkembang pada Mac 2023, meningkat 0.7 peratus tahun ke tahun. Peningkatan ini disumbangkan oleh indeks alat jentera & kelengkapan pengangkutan (+10.7%), makanan (+6.4%) dan bahan kimia (+2.3%).

Sebaliknya, **indeks volum eksport** menurun 2.1 peratus pada Mac 2023. Penurunan ini disumbangkan oleh indeks alat jentera & kelengkapan pengangkutan (-12.2%), bahan kimia (-11.1%) dan pelbagai barang keluaran kilang (-5.3%).



Paparan 3: Prestasi Nilai Eksport, Indeks Nilai Seunit dan Indeks Volum serta Penyumbang Utama Indeks Nilai Seunit dan Indeks Volum Eksport

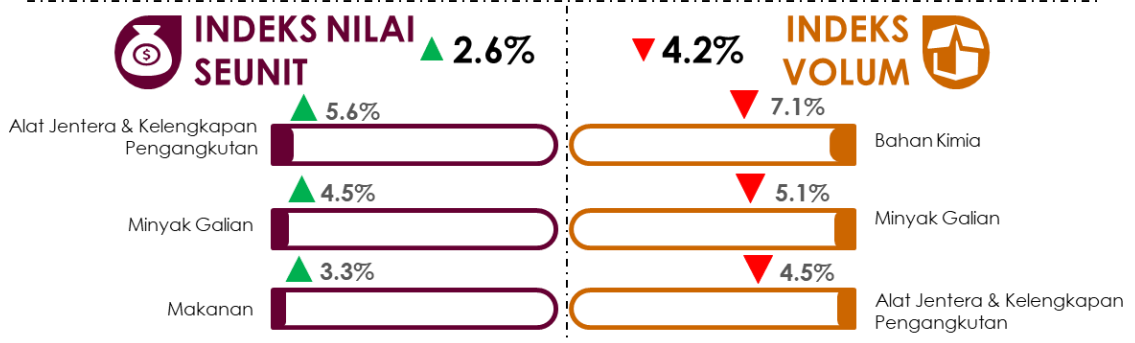
IMPORT

Indeks volum import merosot 4.2 peratus pada Mac 2023 berbanding bulan yang sama tahun lalu kepada 181.7 mata. Penurunan **indeks volum import** didorong oleh kejatuhan indeks bahan kimia (-7.1%), minyak galian (-5.1%) dan alat jentera & kelengkapan pengangkutan (-4.5%) (Paparan 4).

Sebaliknya, **indeks nilai seunit import** berkembang 2.6 peratus kepada 129.2 mata pada Mac 2023 berbanding bulan yang sama tahun sebelumnya. Peningkatan ini disumbangkan oleh kenaikan indeks alat jentera & kelengkapan pengangkutan (+5.6%), minyak galian (+4.5%) dan makanan (+3.3%).

PERBANDINGAN TAHUN KE TAHUN

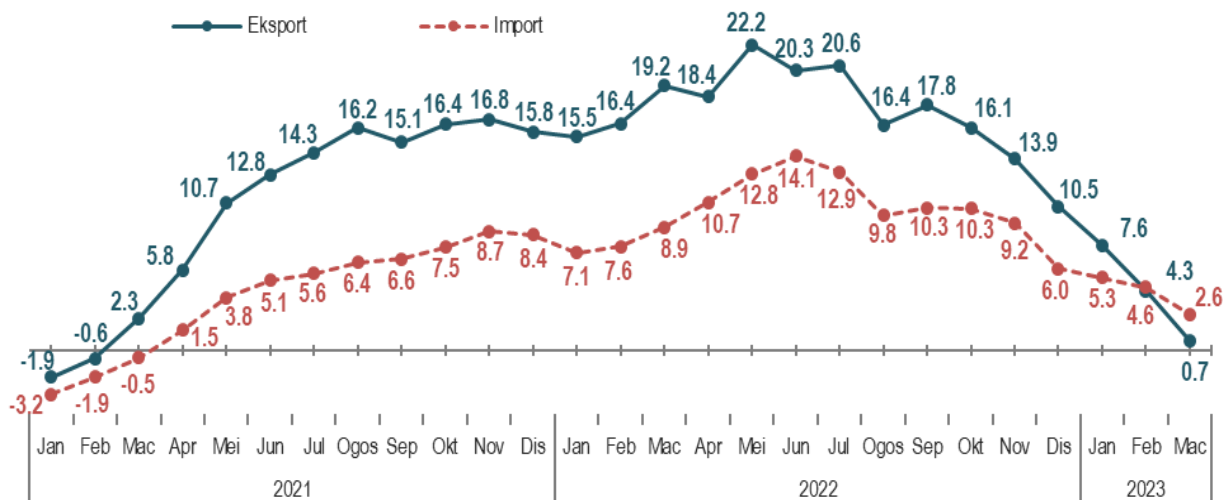
NILAI ▼ 1.8%



Paparan 4: Prestasi Nilai Import, Indeks Nilai Seunit dan Indeks Volum serta Penyumbang Utama Indeks Nilai Seunit dan Indeks Volum Import

SIRI MASA INDEKS NILAI SEUNIT EKSPORT & IMPORT

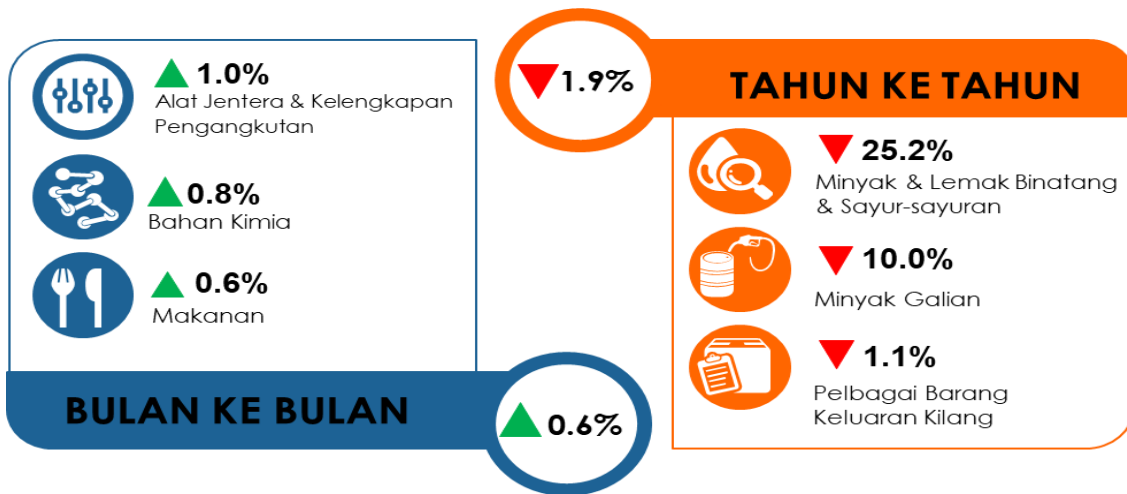
Kedua-dua indeks nilai seunit eksport dan import kekal berada dalam trajektori menurun sejak Oktober 2022.



Carta 4: Peratus Perubahan Tahun ke Tahun bagi Indeks Nilai Seunit Eksport & Import Januari 2021 – Mac 2023

TERMA PERDAGANGAN

Terma perdagangan Malaysia meningkat 0.6 peratus kepada 110.3 mata pada Mac 2023 berbanding Februari 2023. Peningkatan ini didorong oleh kenaikan indeks alat jentera & kelengkapan pengangkutan (+1.0%), bahan kimia (+0.8%) dan makanan (0.6%).

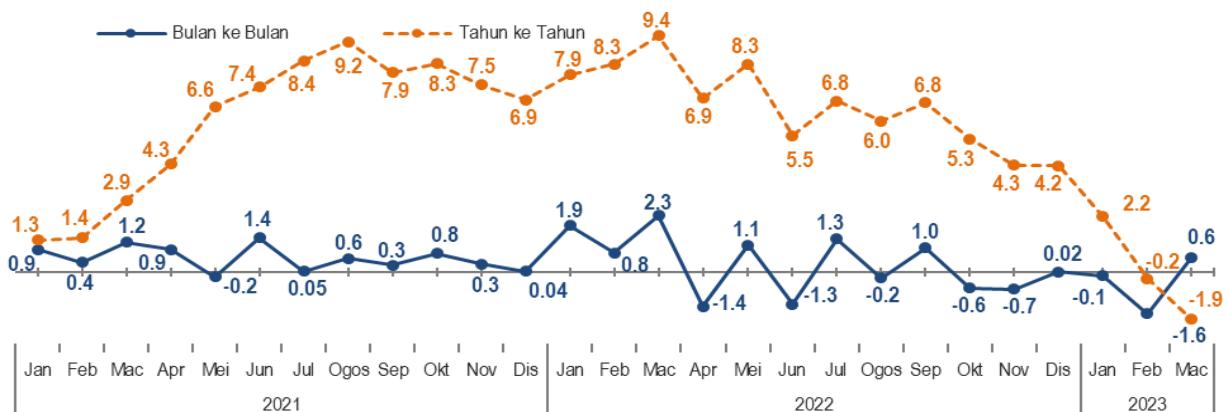


Paparan 5: Penyumbang Utama Terma Perdagangan Mengikut Bulan ke Bulan dan Tahun ke Tahun

Berasaskan tahun ke tahun, **terma perdagangan** Malaysia merosot 1.9 peratus daripada 112.4 mata pada Mac tahun lalu. Kejatuhan ini disumbangkan oleh indeks minyak & lemak binatang & sayur-sayuran (-25.2%), diikuti oleh minyak galian (-10.0%) dan pelbagai barang keluaran kilang (-1.1%).

SIRI MASA TERMA PERDAGANGAN

Terma perdagangan Malaysia pada menyusut pada Mac 2023, tahun ke tahun. Namun begitu, prestasi bulan ke bulan memulih kepada pertumbuhan positif. Di sebalik prestasi yang tidak menentu, **terma perdagangan** kekal pada paras melebihi 100 mata sejak Januari 2021.



Carta 5: Terma Perdagangan, Januari 2021 – Mac 2023

EXTERNAL TRADE INDICES MARCH 2023

MALAYSIA'S TRADE PERFORMANCE

Malaysia's total trade tapered off by 1.6 per cent in March 2023, with the amount of RM3.7 billion to record a value of RM232.7 billion as compared to RM236.5 billion in the same month of preceding year. Exports lessen by 1.4 per cent to RM129.7 billion in March 2023. Imports amounted at RM103.0 billion, declined by 1.8 per cent year-on-year (y-o-y). Trade balance remained to record a surplus with a value of RM26.7 billion with an increase of 0.2 per cent y-o-y.

In comparison to February 2023, all showed improvement by double digit growth in exports, imports, total trade and trade surplus with an increase of 15.5 per cent, 11.1 per cent, 13.5 per cent and 36.4 per cent respectively.

The total trade, exports and imports for the first quarter (Q1) of 2023 posted increases as compared to the Q1 of 2022. Exports rose by 2.8 per cent to RM354.6 billion and imports with a value of RM290.2 billion, expanded by 3.7 per cent. Consequently, total trade grew by 3.2 per cent to RM644.9 billion. On the other note, trade surplus decreased by 1.0 per cent from RM65.0 billion to RM64.4 billion.

MONTH-ON-MONTH COMPARISON

EXPORTS

Month-on-month (m-o-m) comparison showed that **export unit value index** recorded a positive growth of 1.0 per cent in March 2023. The increase was contributed by the index of animal & vegetable oils & fats (+3.2%), machinery & transport equipment (+1.5%) and miscellaneous manufactured articles (+0.8%) (Exhibit 1).

Likewise, the **export volume index** increased 14.4 per cent in March 2023, which was supported by the increment in the index of animal & vegetable oils & fats (+31.7%), miscellaneous manufactured articles (+23.8%) and machinery & transport equipment (+14.3%). The seasonally adjusted **export volume index** decreased 1.4 per cent from 167.4 points to 165.2 points (Chart 1).

MONTH-ON-MONTH COMPARISON

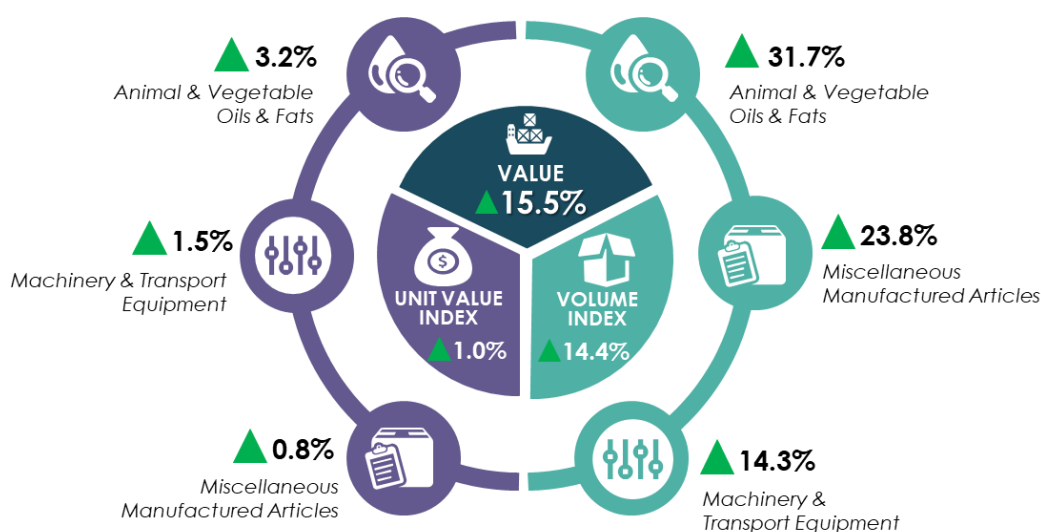


Exhibit 1: Export Value, Unit Value Index and Volume Index Performances and Main Contributors of Export Unit Value and Volume Indices

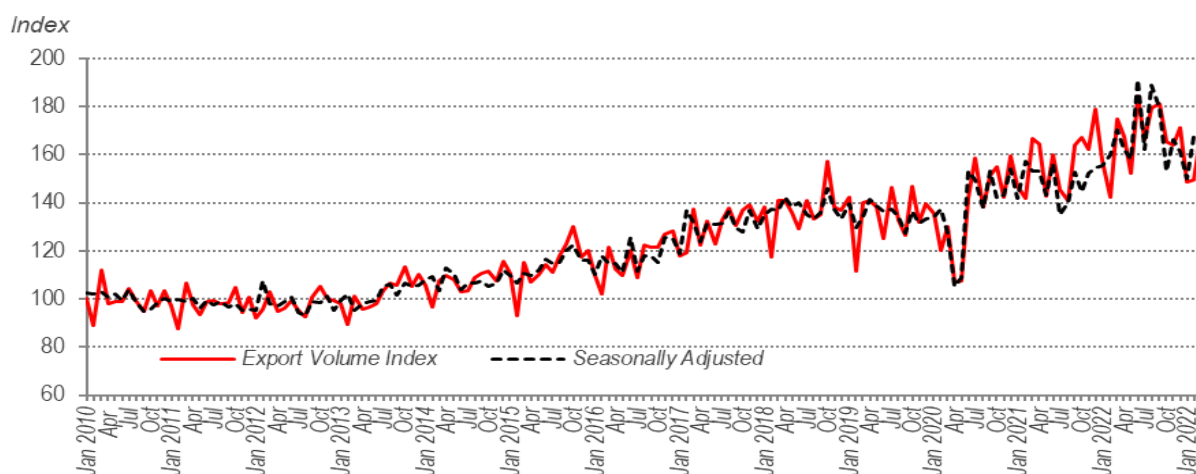


Chart 1: Export Volume Indices - Actual & Seasonally Adjusted

IMPORTS

The **import unit value index** increased 0.4 per cent in March 2023, supported by the increase in the index of animal & vegetable oils & fats (+3.0%), food (+0.5%) and machinery & transport equipment (+0.49%) (Exhibit 2).

The **import volume index** showed a positive trend of 10.7 per cent in March 2023 as compared to the previous month. The increase was contributed by the index of miscellaneous manufactured articles (+27.5%), manufactured goods (+25.9%) and machinery & transport equipment (+16.5%). The seasonally adjusted **import volume index** in March 2023 fell by 4.3 per cent from 183.6 points to 175.7 points (Chart 2).

MONTH-ON-MONTH COMPARISON

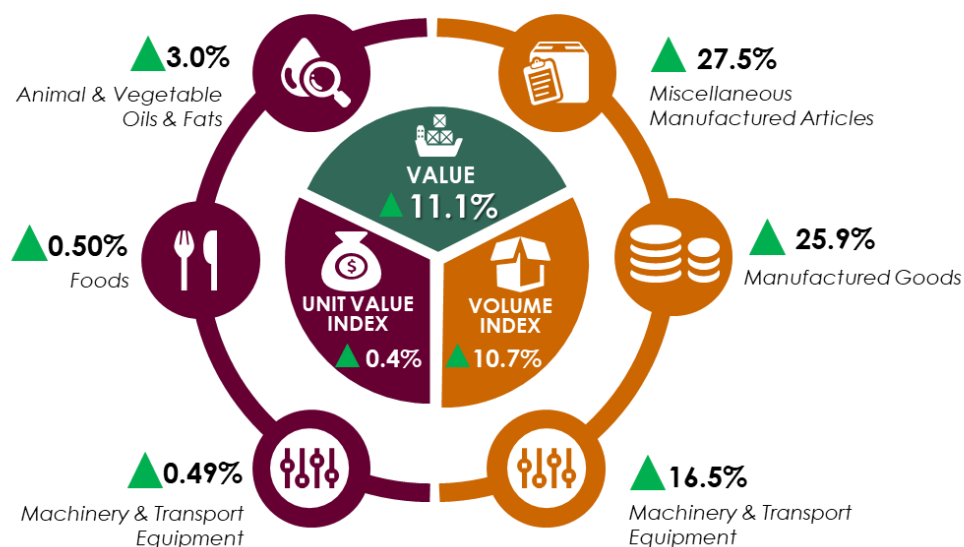


Exhibit 2: Import Value, Unit Value Index and Volume Index Performances and Main Contributors of Import Unit Value and Volume Indices



Chart 2: Import Volume Indices - Actual & Seasonally Adjusted

TIME-SERIES OF EXPORT & IMPORT UNIT VALUE INDICES

On a monthly basis, **export unit value index** bounced back to a positive growth while **import unit value index** moderated in March 2023.

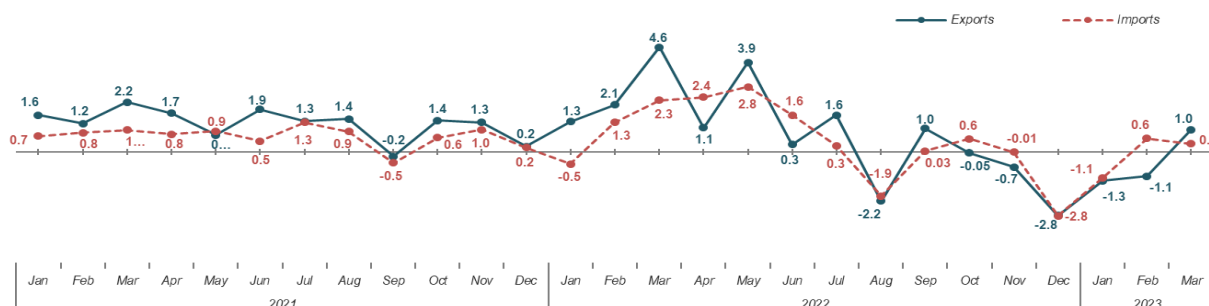


Chart 2: Month-on-Month Percentage Change of Export & Import Unit Value Indices January 2021 – March 2023

YEAR-ON-YEAR COMPARISON

EXPORTS

The **export unit value index** continued to expand in March 2023, showing a growth of 0.7 per cent y-o-y. The increase was contributed by the growth in the index of machinery & transport equipment (+10.7%), food (+6.4%), and chemicals (+2.3%).

However, the **export volume index** fell by 2.1 per cent in March 2023. The decrement was contributed by the index of machinery & transport equipment (-12.2%), chemicals (-11.1%) and miscellaneous manufactured articles (-5.3%).

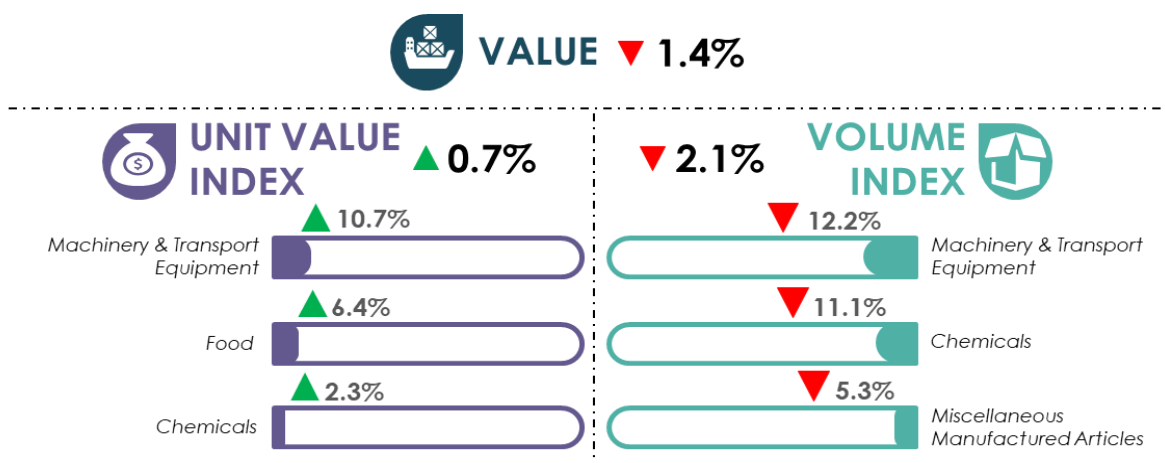


Exhibit 3: Export Value, Unit Value Index and Volume Index Performances and Main Contributors of Export Unit Value and Volume Indices

IMPORTS

The **import volume index** declined 4.2 per cent in March 2023 as compared to the same month of the previous year to 181.7 points. The decrease in the **import volume index** was attributed to the fall in index of chemicals (-7.1%), mineral fuels (-5.1%) and machinery & transport equipment (-4.5%) (Exhibit 4).

However, **import unit value index** grew 2.6 per cent to 129.2 points in March 2023 as compared to the same month of the previous year. The growth was contributed by the increment in the index of machinery & transport equipment (+5.6%), mineral fuels (+4.5%) and food (+3.3%).

YEAR-ON-YEAR COMPARISON

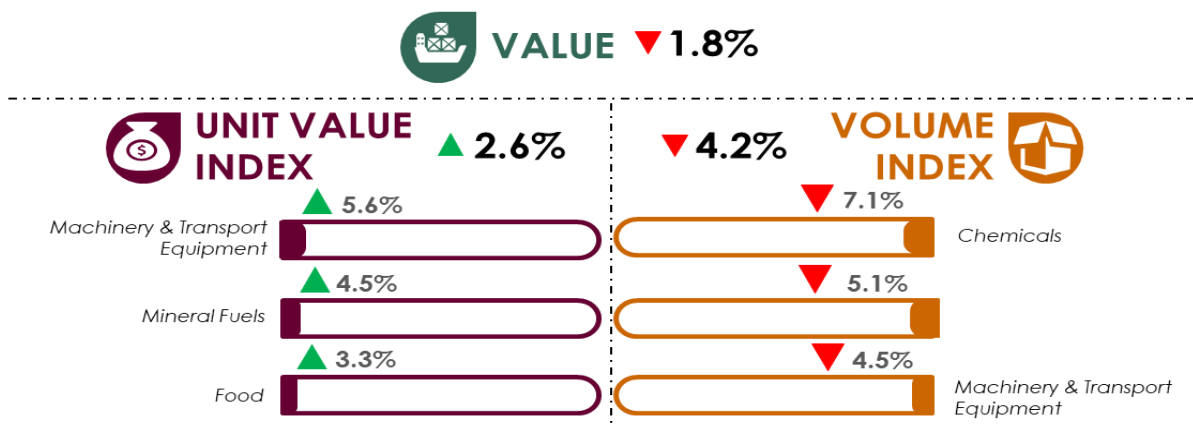


Exhibit 4: Import Value, Unit Value Index and Volume Index Performances and Main Contributors of Import Unit Value and Volume Indices

TIME-SERIES OF EXPORT & IMPORT UNIT VALUE INDICES

Both **export and import unit value indices** were consistently in a downward trajectory since October 2022.

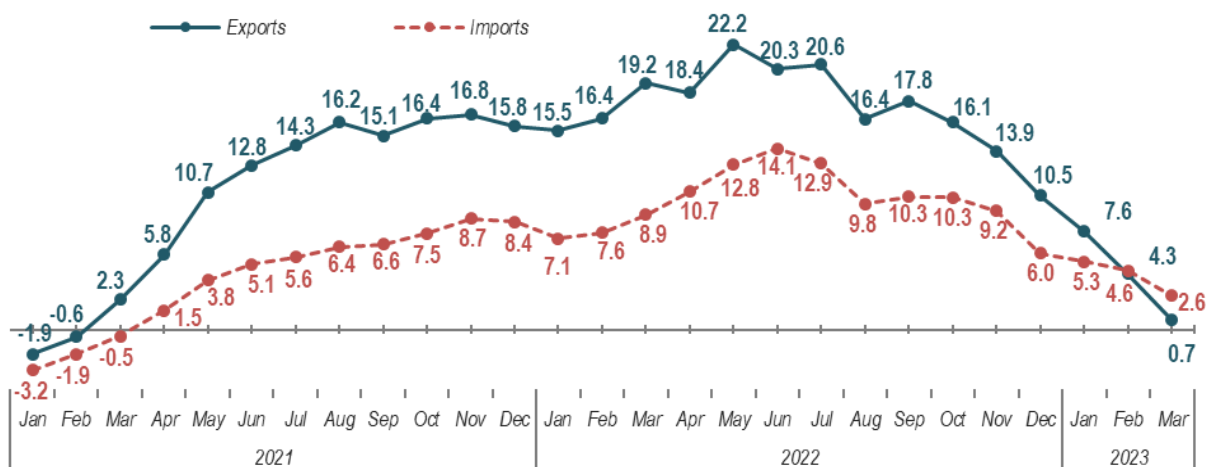


Chart 4: Year-on-Year Percentage Change of Export & Import Unit Value Indices January 2021 – March 2023

TERMS OF TRADE

Malaysia's **terms of trade** increased 0.6 per cent to 110.3 points in March 2023 as compared to February 2023. The increment was contributed by the increase in the index of machinery & transport equipment (+1.0%), chemicals (+0.8%) and food (+0.6%).

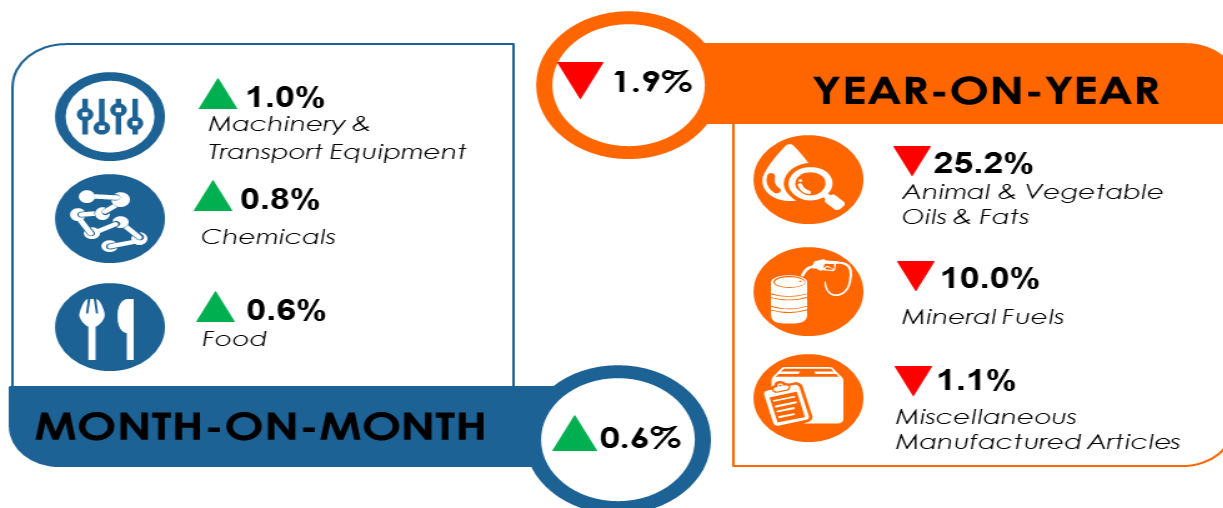


Exhibit 5: Main Contributors of Terms of Trade based Month-on-Month and Year-on-Year

On a y-o-y basis, Malaysia's **terms of trade** decreased by 1.9 per cent from 112.4 points in March of previous year. This was driven by the decline in the index of animal & vegetable oils & fats (-25.2%), followed by mineral fuels (-10.0%) and miscellaneous manufactured articles (-1.1%).

TIME-SERIES OF TERMS OF TRADE

Malaysia's **terms of trade** decreased in March 2023, y-o-y. Meanwhile, m-o-m performance rebounded to a positive growth. Despite the up-and-down performance, **terms of trade** remained above 100 points since January 2021.

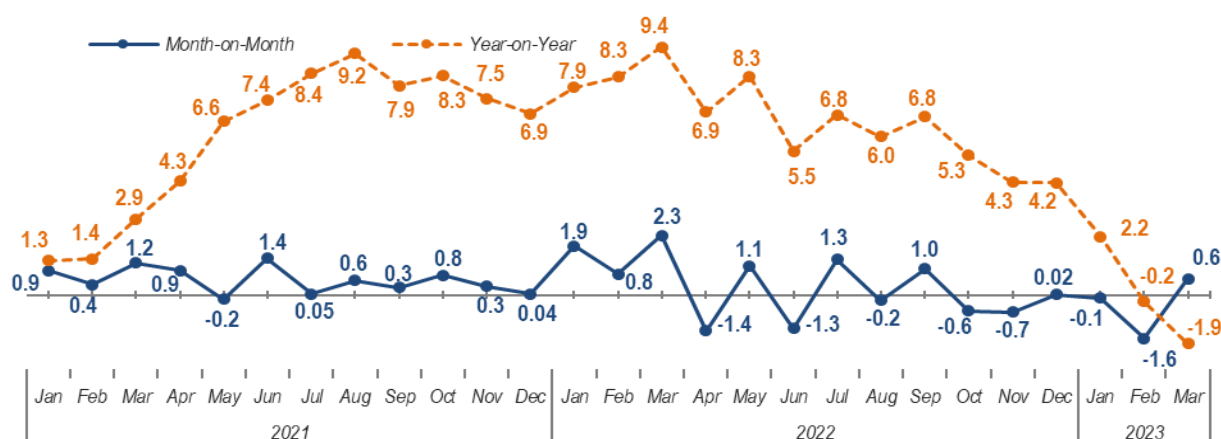
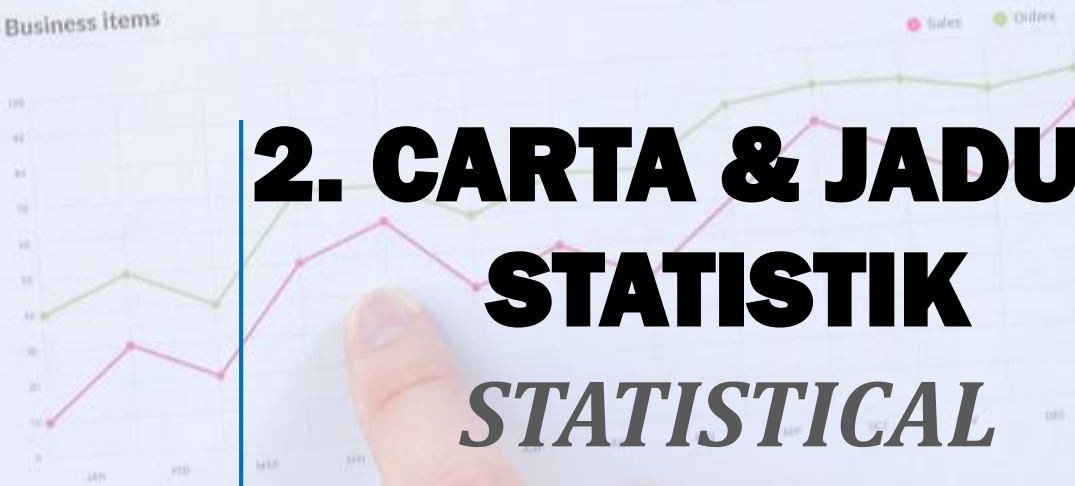


Chart 5: Terms of Trade, January 2021 – March 2023

Our company



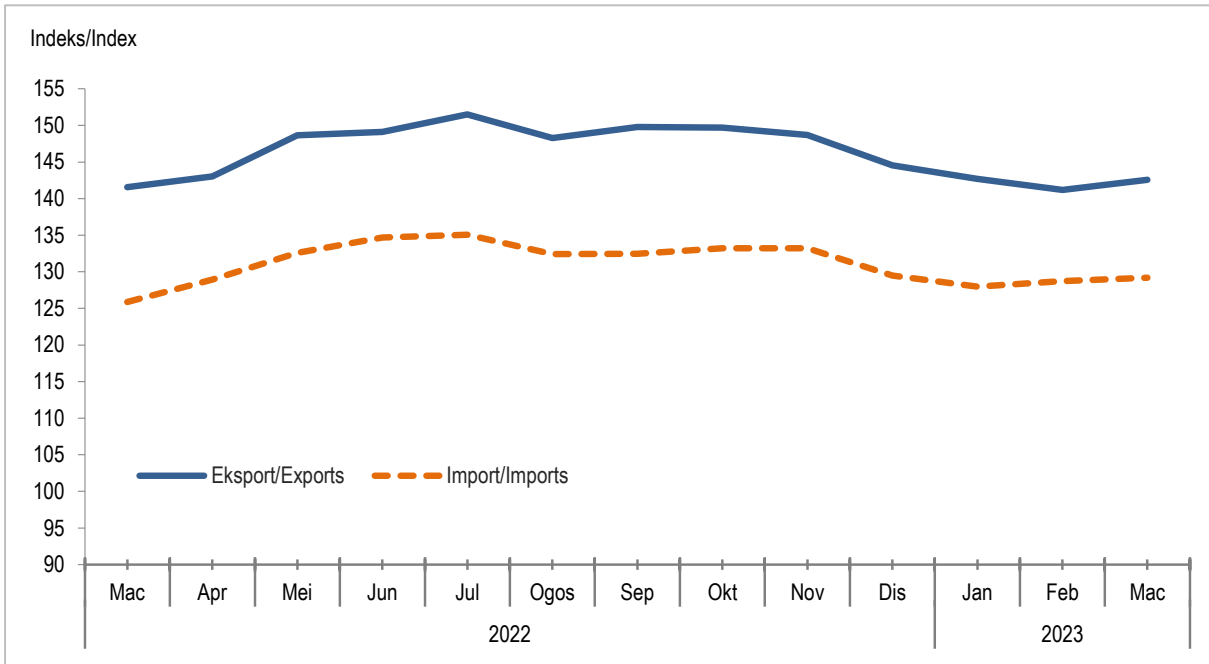
Business items



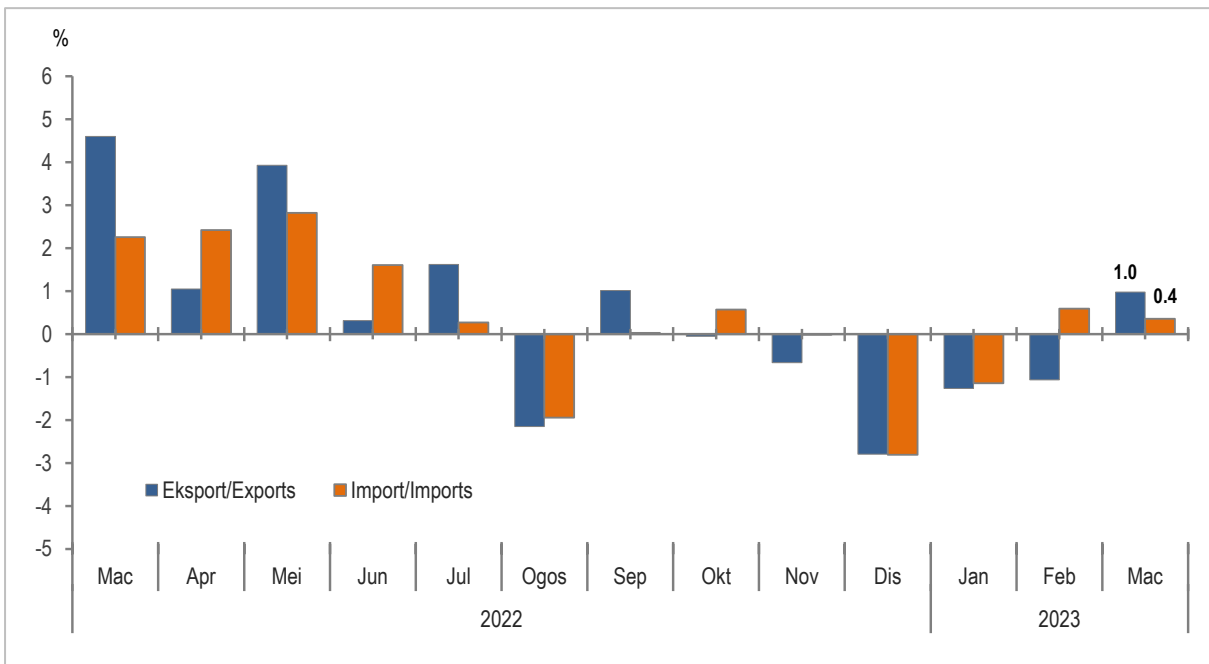
2. CARTA & JADUAL STATISTIK

STATISTICAL TABLES & CHARTS

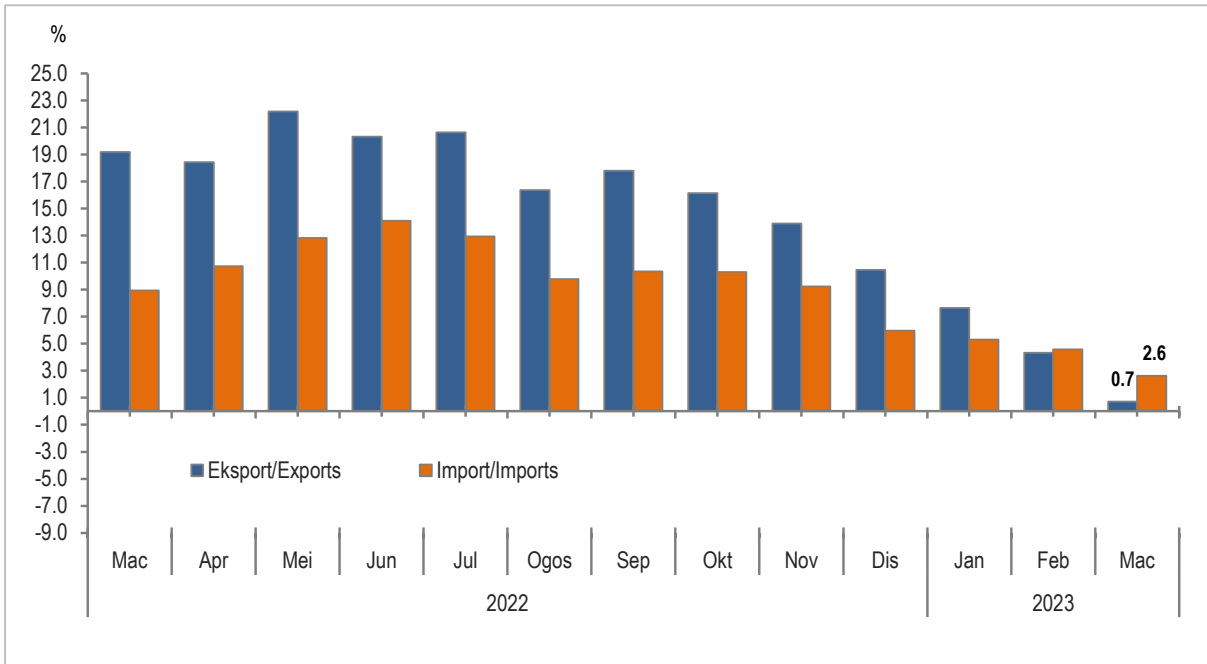
Carta 1.1: Indeks Nilai Seunit Eksport dan Import
 Chart 1.1: Export and Import Unit Value Index



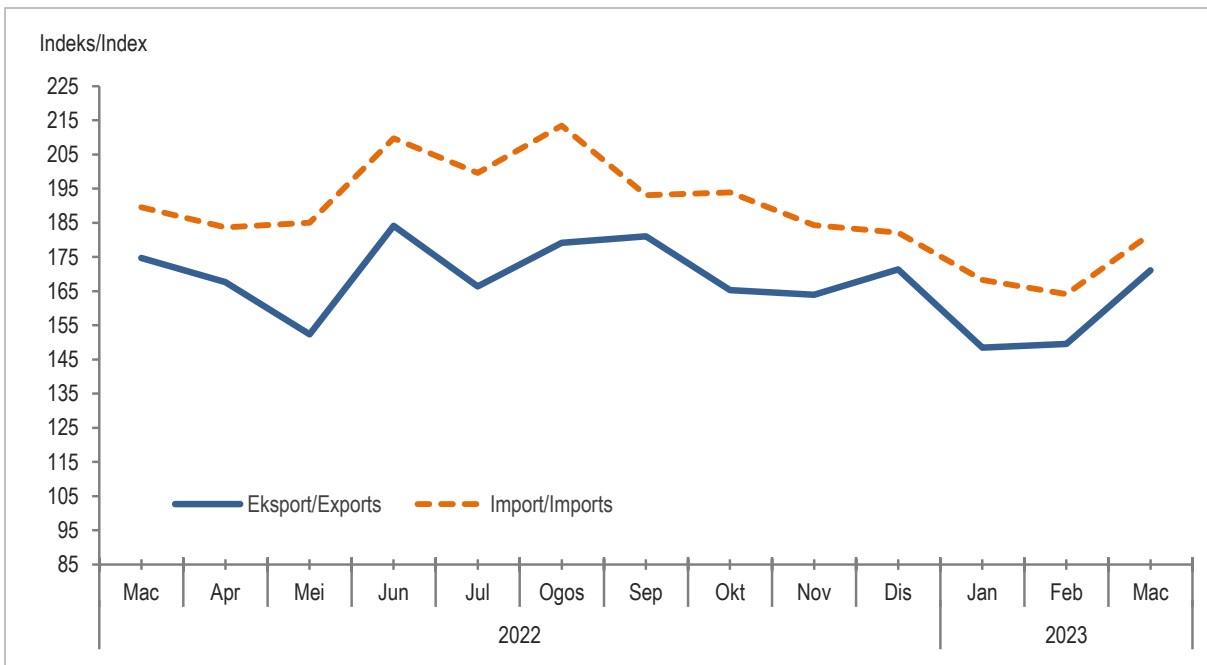
Carta 1.2: Peratus Perubahan Bulan ke Bulan Eksport dan Import Indeks Nilai seunit
 Chart 1.2: Month-on-Month Percentage Change in Export and Import Unit Value Index



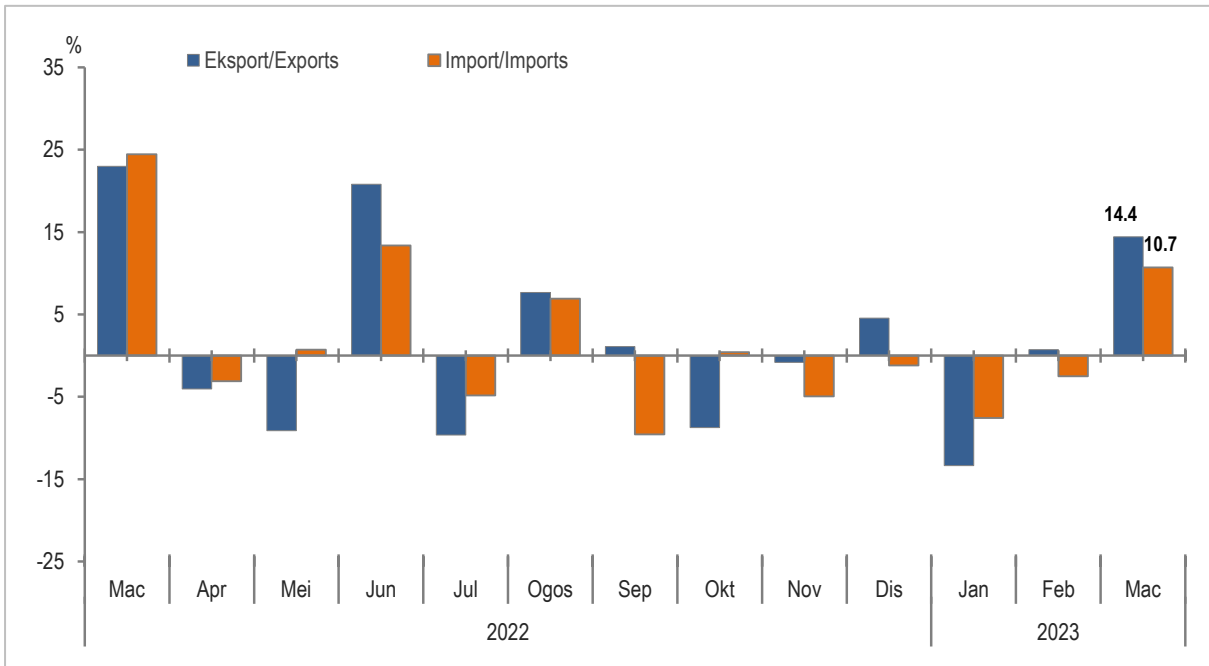
Carta 1.3: Peratus Perubahan Tahun Ke Tahun Indeks Nilai Seunit Eksport dan Import
 Chart 1.3: Year-on-Year Percentage Change in Export and Import Unit Value Index



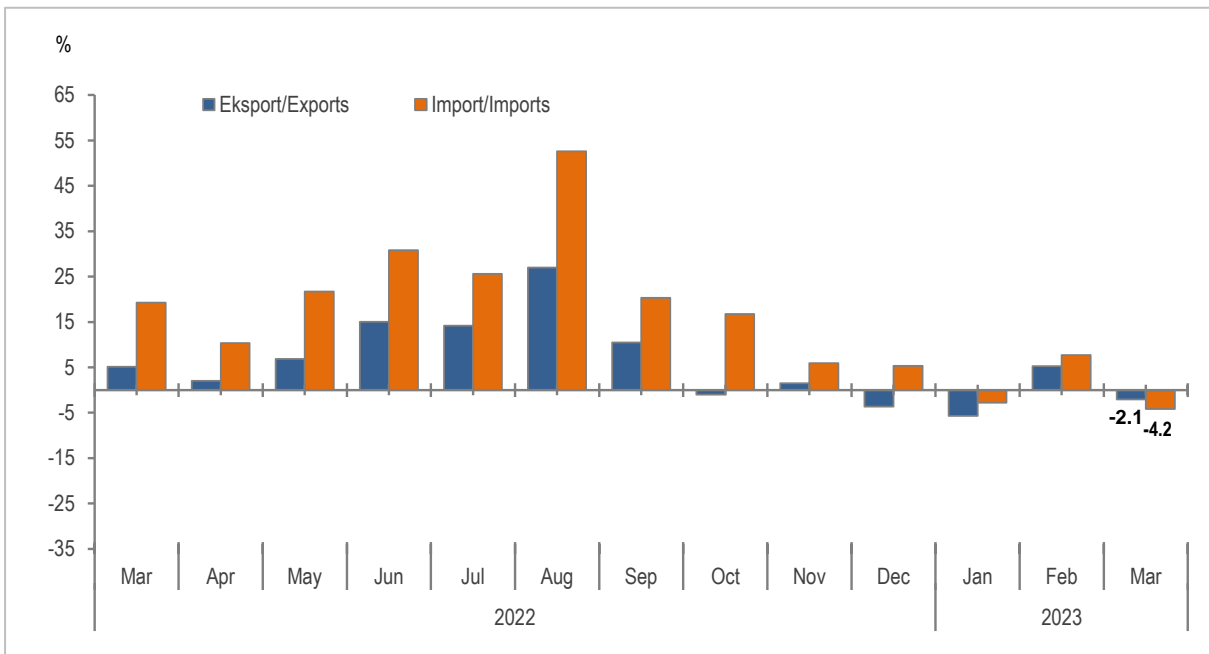
Carta 2.1: Indeks Volum Eksport dan Import
 Chart 2.1: Export and Import Volume Indices



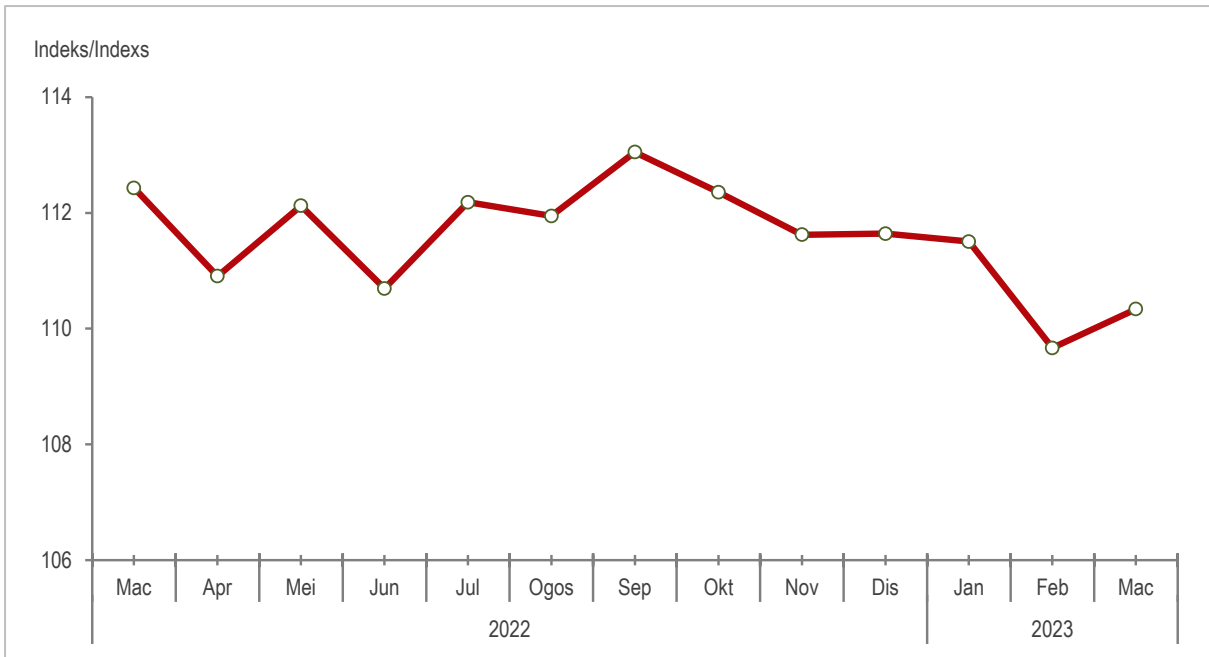
Carta 2.2: Peratus Perubahan Bulan ke Bulan Indeks Volum Eksport dan Import
 Chart 2.2: Month-on-Month Percentage Change Export and Import Volume Index



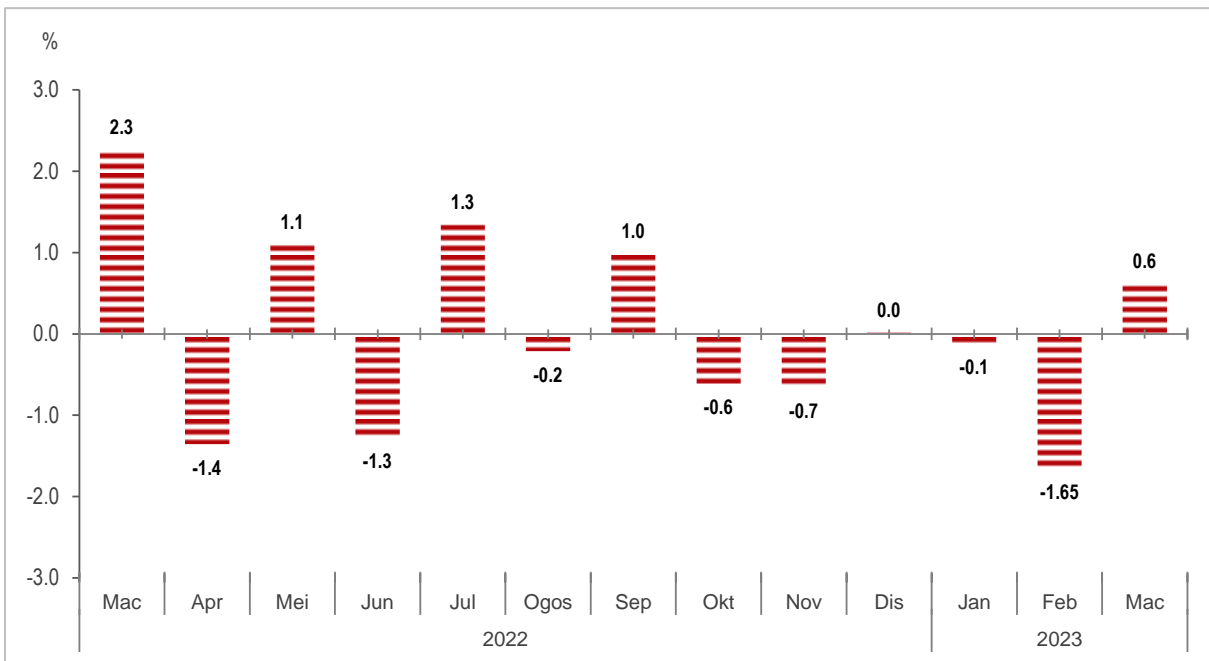
Carta 2.3: Peratus Perubahan Tahun ke Tahun Indeks Volum Eksport dan Import
 Chart 2.3: Year-on-Year Percentage Change in Export and Import Volume Index



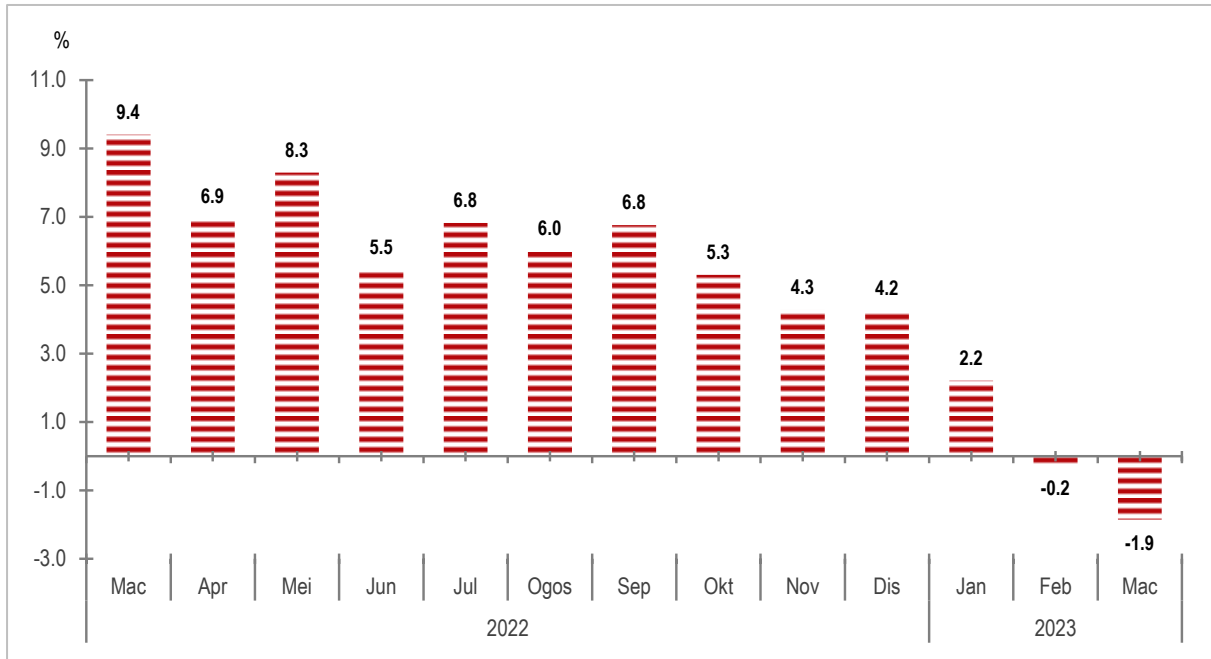
Carta 3.1: Indeks Terma Perdagangan
 Chart 3.1: Terms of Trade Index



Carta 3.2: Peratus Perubahan Bulan Ke Bulan Indeks Terma Perdagangan
 Chart 3.2: Month-on-Month Percentage Change in Terms of Trade Index



Carta 3.3: Peratus Perubahan Tahun ke Tahun Indeks Terma Perdagangan
Chart 3.3: Year-on-Year Percentage Change in Terms of Trade Index



MALAYSIA
JADUAL 1A : INDEKS NILAI SEUNIT EKSPORT (2010=100) MENGIKUT SEKSYEN BARANGAN (S.I.T.C.)
TABLE 1A : EXPORT UNIT VALUE INDICES (2010=100) BY COMMODITY SECTION (S.I.T.C.)

TEMPOH PERIOD	JUMLAH TOTAL	0 MAKANAN FOOD	1 MINUMAN DAN TEBBAKAU BEVERAGES AND TOBACCO	2 BAHAN-BAHAN MENTAH TIDAK BOLEH DIMAKAN CRUDE MATERIALS, INEDIBLE	3 BAHAN API GALIAN, PELINCIR, DLL. MINERAL FUELS, LUBRICANTS, ETC.	4 MINYAK DAN LEMAK BINATANG DAN SAYUR-SAYURAN ANIMAL AND VEGETABLE OILS AND FATS	5 BAHAN KIMIA CHEMICALS	6 BARANG-BARANG KELUARAN KILANG MANUFACTURED GOODS	7 JENTERA & KELENGKAPAN PENGANGKUTAN MACHINERY & TRANSPORT EQUIPMENT	8 PELBAGAI BARANG KELUARAN KILANG MISCELLANEOUS MANUFACTURED ARTICLES	9 PELBAGAI URUS NIAGA DAN BARANGAN MISCELLANEOUS TRANSACTIONS AND COMMODITIES		
WAJARAN / WEIGHTS	100.0	3.5	0.6	2.7	16.1	6.0	7.8	9.7	42.3	10.9	0.4		
2010	100.0	100.0	100.0	100.0	100.0	100.0	100.0	100.0	100.0	100.0	100.0		
2011	111.3	110.7	100.8	125.1	130.1	127.8	112.7	107.9	102.0	106.0	117.7		
2012	112.4	112.6	101.5	108.5	141.7	113.8	110.8	98.9	105.1	107.7	147.8		
2013	110.5	114.0	102.1	94.7	140.0	96.3	109.8	96.1	105.7	109.8	149.0		
2014	111.7	117.1	103.7	84.7	142.1	101.9	116.3	96.7	105.7	111.7	151.8		
2015	107.1	122.9	108.7	82.0	99.9	93.2	126.7	100.1	109.1	116.5	147.6		
2016	104.9	129.7	115.7	79.9	75.2	100.4	133.7	99.7	109.7	120.4	172.4		
2017	112.5	138.6	124.5	91.2	96.1	113.8	149.0	104.5	111.0	124.3	193.5		
2018	114.4	143.1	132.7	84.9	111.9	97.1	154.8	106.0	110.1	126.2	197.7		
2019	115.3	146.7	142.7	84.4	112.1	87.7	153.7	103.0	112.8	129.0	187.6		
2020	112.4	151.6	147.7	83.8	84.1	107.5	154.5	101.9	114.0	129.9	172.3		
2021	123.9	157.3	152.9	89.9	112.9	159.2	164.2	107.0	116.1	132.2	191.8		
2022	145.2	164.0	159.6	92.5	180.6	188.8	176.8	111.9	128.1	133.6	342.2		
2021	MAC	MAR	118.8	155.6	150.8	88.7	97.1	144.9	161.0	105.1	114.4	131.5	179.9
	APR	APR	120.8	156.4	151.5	89.7	101.7	153.7	162.3	106.0	115.0	132.2	183.0
	MEI	MAY	121.7	157.2	152.1	89.9	103.0	158.5	163.0	106.5	115.3	132.8	184.1
	JUN	JUN	123.9	157.7	152.4	90.4	110.5	164.1	163.6	107.4	116.2	132.7	187.6
	JUL	JUL	125.6	158.1	152.5	90.6	117.9	159.6	164.1	107.9	117.5	132.8	189.4
	OGOS	AUG	127.4	158.2	153.5	91.0	124.1	161.8	165.5	108.8	118.2	133.2	195.7
	SEP	SEP	127.1	158.3	154.2	91.1	122.7	167.1	166.2	108.6	117.3	132.9	195.3
	OKT	OCT	128.9	158.4	154.6	91.0	130.4	172.6	167.8	108.7	117.1	132.4	203.4
	NOV	NOV	130.6	158.7	155.6	91.1	137.4	174.5	169.1	108.5	117.5	132.5	208.2
	DIS	DEC	130.9	159.4	156.7	91.6	133.1	180.4	170.5	109.1	118.4	132.6	231.5
2022	JAN	JAN	132.6	159.6	156.8	91.6	135.9	186.5	171.7	110.0	120.0	132.5	229.8
	FEB	FEB	135.3	160.1	157.0	91.7	146.8	190.6	172.7	110.8	120.8	132.2	242.4
	MAC	MAR	141.5	160.3	157.5	92.1	171.8	203.7	174.5	111.4	122.1	131.9	285.4
	APR	APR	143.0	161.0	157.7	92.3	168.2	219.2	176.6	112.4	123.9	132.5	283.0
	MEI	MAY	148.6	162.8	157.8	93.1	184.4	232.4	178.0	113.1	126.9	133.7	348.6
	JUN	JUN	149.1	163.7	158.0	92.9	184.0	226.6	178.5	112.9	128.7	134.2	382.5
	JUL	JUL	151.5	164.7	159.8	93.4	196.7	223.4	178.5	112.6	129.8	134.7	333.6
	OGOS	AUG	148.3	166.0	159.8	93.6	193.7	182.2	178.0	112.0	129.9	134.7	378.9
	SEP	SEP	149.8	166.2	161.9	93.5	206.4	162.7	178.3	111.7	131.4	134.9	361.4
	OKT	OCT	149.7	167.0	162.3	92.9	199.4	154.1	178.7	112.1	135.2	134.4	422.2
	NOV	NOV	148.7	168.2	163.0	91.6	198.3	143.6	178.8	112.3	135.1	134.6	398.7
	DIS	DEC	144.5	168.5	163.1	91.2	181.3	140.9	177.7	111.4	133.3	133.2	439.5
2023	JAN	JAN	142.7	168.6	163.9	91.3	170.8	141.3	177.1	111.6	133.8	132.9	372.4
	FEB	FEB	141.2	168.8	164.4	90.5	164.6	137.4	176.7	111.1	133.3	132.7	437.1
	MAC ^p	MAR ^p	142.6	170.6	164.6	91.3	161.7	141.8	178.5	111.4	135.2	133.7	583.5

MALAYSIA

JADUAL 1B : PERATUS PERUBAHAN BULAN KE BULAN INDEKS NILAI SEUNIT BAGI EKSPORT (2010=100) MENGIKUT SEKSYEN BARANGAN (S.I.T.C.)

TABLE 1B : MONTH-ON-MONTH PERCENTAGE CHANGE EXPORT UNIT VALUE INDICES (2010=100) BY COMMODITY SECTIONS (S.I.T.C.)

TEMPOH PERIOD	JUMLAH TOTAL	0 MAKANAN FOOD	1 MINUMAN DAN TEBAKAU BEVERAGES AND TOBACCO	2 BAHAN-BAHAN MENTAH TIDAK BOLEH DIMAKAN CRUDE MATERIALS, INEDIBLE	3 BAHAN API GALIAN, PELINCIR, DLL. MINERAL FUELS, LUBRICANTS, ETC.	4 MINYAK DAN LEMAK BINATANG DAN SAYUR- SAYURAN ANIMAL AND VEGETABLE OILS AND FATS	5 BAHAN KIMIA CHEMICALS	6 BARANG- BARANG KELUARAN KILANG MANUFACTURED GOODS	7 JENTERA & KELENGKAPAN PENGANGKUTAN MACHINERY & TRANSPORT EQUIPMENT	8 PELBAGAI BARANG KELUARAN KILANG MISCELLANEOUS MANUFACTURED ARTICLES	9 PELBAGAI URUS NIAGA DAN BARANGAN MISCELLANEOUS TRANSACTIONS AND COMMODITIES		
WAJARAN / WEIGHTS	100.0	3.5	0.6	2.7	16.1	6.0	7.8	9.7	42.3	10.9	0.4		
2021	MAC	<i>MAR</i>	2.2	0.3	0.3	1.5	8.3	4.0	1.0	0.7	1.0	0.6	3.4
	APR	<i>APR</i>	1.7	0.5	0.5	1.2	4.7	6.1	0.8	0.8	0.6	0.5	1.7
	MEI	<i>MAY</i>	0.7	0.5	0.4	0.3	1.3	3.1	0.4	0.5	0.2	0.4	0.6
	JUN	<i>JUN</i>	1.9	0.3	0.2	0.5	7.3	3.5	0.4	0.8	0.8	-0.1	1.9
	JUL	<i>JUL</i>	1.3	0.2	0.1	0.3	6.7	-2.7	0.3	0.5	1.1	0.1	0.9
	OGOS	<i>AUG</i>	1.4	0.1	0.6	0.5	5.3	1.4	0.9	0.8	0.6	0.3	3.3
	SEP	<i>SEP</i>	-0.2	0.0	0.5	0.1	-1.1	3.2	0.4	-0.2	-0.8	-0.2	-0.2
	OKT	<i>OCT</i>	1.4	0.1	0.3	-0.1	6.2	3.3	0.9	0.1	-0.2	-0.4	4.1
	NOV	<i>NOV</i>	1.3	0.2	0.6	0.0	5.4	1.1	0.8	-0.2	0.4	0.1	2.4
	DIS	<i>DEC</i>	0.2	0.4	0.7	0.6	-3.2	3.4	0.8	0.5	0.8	0.1	11.1
2022	JAN	<i>JAN</i>	1.3	0.1	0.1	0.0	2.1	3.3	0.7	0.9	1.3	-0.1	-0.7
	FEB	<i>FEB</i>	2.1	0.3	0.1	0.1	8.0	2.2	0.6	0.6	0.7	-0.2	5.5
	MAC	<i>MAR</i>	4.6	0.1	0.3	0.4	17.1	6.9	1.0	0.6	1.1	-0.2	17.7
	APR	<i>APR</i>	1.1	0.5	0.1	0.2	-2.1	7.6	1.2	0.9	1.5	0.4	-0.8
	MEI	<i>MAY</i>	3.9	1.1	0.0	0.9	9.6	6.0	0.8	0.6	2.4	0.8	23.2
	JUN	<i>JUN</i>	0.3	0.5	0.2	-0.2	-0.2	-2.5	0.3	-0.2	1.4	0.4	9.7
	JUL	<i>JUL</i>	1.6	0.6	1.1	0.4	6.9	-1.4	0.0	-0.2	0.8	0.4	-12.8
	OGOS	<i>AUG</i>	-2.2	0.8	0.0	0.2	-1.5	-18.4	-0.3	-0.6	0.1	0.0	13.6
	SEP	<i>SEP</i>	1.0	0.1	1.3	-0.1	6.6	-10.7	0.2	-0.3	1.1	0.2	-4.6
	OKT	<i>OCT</i>	0.0	0.5	0.2	-0.6	-3.4	-5.3	0.2	0.3	2.9	-0.4	16.8
	NOV	<i>NOV</i>	-0.7	0.7	0.4	-1.5	-0.6	-6.8	0.1	0.2	-0.1	0.2	-5.6
	DIS	<i>DEC</i>	-2.8	0.2	0.1	-0.4	-8.6	-1.9	-0.6	-0.8	-1.3	-1.1	10.2
2023	JAN	<i>JAN</i>	-1.3	0.1	0.5	0.1	-5.8	0.3	-0.3	0.2	0.4	-0.2	-15.3
	FEB	<i>FEB</i>	-1.1	0.1	0.3	-0.8	-3.6	-2.7	-0.2	-0.5	-0.4	-0.2	17.4
	MAC^p	<i>MAR^p</i>	1.0	1.1	0.1	0.8	-1.8	3.2	1.1	0.3	1.5	0.8	33.5

MALAYSIA

JADUAL 1C : PERATUS PERUBAHAN TAHUN KE TAHUN INDEKS NILAI SEUNIT BAGI EKSPORT (2010=100) MENGIKUT SEKSYEN BARANGAN (S.I.T.C.)
TABLE 1C : YEAR-ON-YEAR PERCENTAGE CHANGE EXPORT UNIT VALUE INDICES (2010=100) BY COMMODITY SECTION (S.I.T.C.)

TEMPOH PERIOD	JUMLAH TOTAL	0 MAKANAN FOOD	1 MINUMAN DAN TEBAKAU BEVERAGES AND TOBACCO	2 BAHAN-BAHAN MENTAH TIDAK BOLEH DIMAKAN CRUDE MATERIALS, INEDIBLE	3 BAHAN API GALIAN, PELINCIR, DLL. MINERAL FUELS, LUBRICANTS, ETC.	4 MINYAK DAN LEMAK BINATANG DAN SAYUR- SAYURAN ANIMAL AND VEGETABLE OILS AND FATS	5 BAHAN KIMIA CHEMICALS	6 BARANG- BARANG KELUARAN KILANG MANUFACTURED GOODS	7 JENTERA & KELENGKAPAN PENGANGKUTAN MACHINERY & TRANSPORT EQUIPMENT	8 PELBAGAI BARANG KELUARAN KILANG MISCELLANEOUS MANUFACTURED ARTICLES	9 PELBAGAI URUS NIAGA DAN BARANGAN MISCELLANEOUS TRANSACTIONS AND COMMODITIES		
WAJARAN / WEIGHTS	100.0	3.5	0.6	2.7	16.1	6.0	7.8	9.7	42.3	10.9	0.4		
2011	11.3	10.7	0.8	25.1	30.1	27.8	12.7	7.9	2.0	6.0	17.7		
2012	1.0	1.7	0.7	-13.2	8.9	-11.0	-1.6	-8.3	3.0	1.6	25.6		
2013	-1.7	1.3	0.6	-12.7	-1.2	-15.4	-0.9	-2.9	0.6	1.9	0.8		
2014	1.2	2.7	1.6	-10.6	1.5	5.8	5.9	0.7	0.0	1.8	1.9		
2015	-4.2	4.9	4.8	-3.1	-29.7	-8.5	8.9	3.5	3.2	4.3	-2.7		
2016	-2.0	5.6	6.5	-2.6	-24.7	7.7	5.5	-0.5	0.6	3.3	16.7		
2017	7.2	6.9	7.6	14.2	27.8	13.3	11.5	4.8	1.2	3.2	12.3		
2018	1.6	3.2	6.6	-6.9	16.4	-14.6	3.9	1.4	-0.8	1.6	2.2		
2019	0.8	2.5	7.5	-0.7	0.1	-9.7	-0.7	-2.8	2.5	2.2	-5.1		
2020	-2.5	3.4	3.5	-0.6	-24.9	22.5	0.5	-1.1	1.1	0.7	-8.2		
2021	10.2	3.8	3.5	7.2	34.2	48.1	6.3	5.1	1.8	1.8	11.4		
2022	17.2	4.3	4.4	2.9	60.0	18.6	7.7	4.5	10.3	1.0	78.4		
8	2021												
	MAC	MAR	2.3	3.6	2.9	5.3	-7.0	30.6	4.6	3.1	0.6	1.5	1.7
	APR	APR	5.8	4.0	2.9	6.7	9.1	46.2	5.4	3.8	0.4	1.7	4.8
	MEI	MAY	10.7	4.2	3.2	7.8	39.0	60.7	6.1	5.0	1.1	2.4	8.0
	JUN	JUN	12.8	4.3	3.3	8.6	49.3	76.5	6.4	6.3	1.0	2.1	11.4
	JUL	JUL	14.3	4.1	3.1	8.8	67.2	63.7	6.6	6.4	1.8	2.2	10.8
	OGOS	AUG	16.2	3.7	3.6	10.0	80.9	57.4	7.0	7.1	3.0	2.2	16.8
	SEP	SEP	15.1	3.7	3.9	9.8	69.9	54.3	7.2	6.8	2.8	2.1	18.5
	OKT	OCT	16.4	3.4	3.9	8.7	86.1	51.4	7.9	6.5	2.4	1.6	24.1
	NOV	NOV	16.8	3.3	4.4	7.1	80.8	50.4	8.3	5.8	3.3	1.7	24.0
	DIS	DEC	15.8	3.5	4.9	6.8	66.7	44.3	8.5	5.7	4.8	1.9	33.5
	2022												
	JAN	JAN	15.5	3.3	4.7	6.5	56.8	40.2	8.4	6.2	6.5	1.5	35.3
	FEB	FEB	16.4	3.2	4.4	5.0	63.6	36.7	8.4	6.2	6.7	1.1	39.3
	MAC	MAR	19.2	3.0	4.4	3.8	76.9	40.6	8.4	6.0	6.8	0.3	58.7
	APR	APR	18.4	3.0	4.1	2.9	65.4	42.6	8.8	6.1	7.7	0.3	54.7
	MEI	MAY	22.2	3.6	3.8	3.5	79.0	46.6	9.2	6.2	10.1	0.7	89.4
	JUN	JUN	20.3	3.8	3.7	2.9	66.5	38.1	9.1	5.1	10.8	1.1	103.9
	JUL	JUL	20.6	4.2	4.8	3.0	66.8	39.9	8.8	4.4	10.4	1.4	76.2
	OGOS	AUG	16.4	4.9	4.1	2.8	56.0	12.6	7.5	3.0	9.9	1.1	93.6
	SEP	SEP	17.8	5.0	5.0	2.6	68.2	-2.6	7.3	2.9	12.0	1.5	85.0
	OKT	OCT	16.1	5.4	5.0	2.1	53.0	-10.7	6.5	3.1	15.5	1.4	107.6
	NOV	NOV	13.9	6.0	4.7	0.5	44.3	-17.7	5.7	3.5	14.9	1.6	91.5
	DIS	DEC	10.5	5.7	4.1	-0.5	36.2	-21.9	4.2	2.1	12.5	0.4	89.9
2023													
JAN	JAN	7.6	5.7	4.5	-0.4	25.7	-24.3	3.1	1.4	11.5	0.3	62.1	
FEB	FEB	4.3	5.4	4.7	-1.3	12.2	-27.9	2.3	0.3	10.3	0.4	80.3	
MAC^P	MAR ^P	0.7	6.4	4.5	-0.9	-5.9	-30.4	2.3	-0.01	10.7	1.3	104.5	

MALAYSIA
JADUAL 2A : INDEKS VOLUM BAGI EKSPORT (2010=100) MENGIKUT SEKSYEN BARANGAN (S.I.T.C.)
TABLE 2A : EXPORT VOLUME INDICES (2010=100) BY COMMODITY SECTION (S.I.T.C.)

TEMPOH PERIOD	JUMLAH TOTAL	0 MAKANAN FOOD	1 MINUMAN DAN TEBPAKAU BEVERAGES AND TOBACCO	2 BAHAN-BAHAN MENTAH TIDAK BOLEH DIMAKAN CRUDE MATERIALS, INEDIBLE	3 BAHAN API GALIAN, PELINCIR, DLL. MINERAL FUELS, LUBRICANTS, ETC.	4 MINYAK DAN LEMAK BINATANG DAN SAYUR- SAYURAN ANIMAL AND VEGETABLE OILS AND FATS	5 BAHAN KIMIA CHEMICALS	6 BARANG- BARANG KELUARAN KILANG MANUFACTURED GOODS	7 JENTERA & KELENGKAPAN PENGANGKUTAN MACHINERY & TRANSPORT EQUIPMENT	8 PELBAGAI BARANG KELUARAN KILANG MISCELLANEOUS MANUFACTURED ARTICLES	9 PELBAGAI URUS NIAGA DAN BARANGAN MISCELLANEOUS TRANSACTIONS AND COMMODITIES		
2010	100.0	100.0	100.0	100.0	100.0	100.0	100.0	100.0	100.0	100.0	100.0		
2011	98.1	102.1	110.4	104.6	95.4	106.2	101.1	107.4	94.3	99.4	97.5		
2012	97.9	101.2	130.4	99.6	99.7	103.9	102.5	114.0	90.5	103.9	114.8		
2013	102.0	106.7	135.0	107.7	112.1	94.0	116.1	125.0	92.3	99.9	90.3		
2014	107.4	120.5	139.7	106.1	116.9	92.1	119.9	124.3	100.1	107.4	87.5		
2015	114.2	122.4	150.2	135.4	126.0	95.5	117.9	132.8	106.6	117.4	75.7		
2016	117.2	128.1	150.6	147.2	143.4	93.0	118.9	124.6	110.2	120.4	84.4		
2017	130.2	126.4	126.4	163.8	145.8	91.8	124.2	141.1	128.7	137.1	133.4		
2018	137.4	101.8	95.5	157.1	137.8	89.5	134.9	155.1	142.5	144.6	107.0		
2019	135.2	103.9	86.0	167.6	125.8	98.7	136.1	165.1	137.1	150.5	96.3		
2020	137.2	99.3	62.4	154.3	130.7	94.6	119.4	154.0	138.9	181.3	52.2		
2021	156.7	109.6	58.0	168.2	134.8	90.7	160.9	210.8	160.2	216.9	58.8		
2022	167.1	121.2	61.2	176.7	142.3	100.4	175.0	219.2	187.2	198.4	57.8		
o													
2021	MAC	MAR	166.6	115.3	79.1	190.2	112.6	88.1	171.8	218.6	171.7	259.5	59.6
	APR	APR	164.4	103.9	66.6	175.0	171.1	89.5	150.2	205.3	159.3	253.8	76.7
	MEI	MAY	142.7	96.5	49.5	142.7	132.4	84.8	141.4	199.6	135.8	220.5	54.3
	JUN	JUN	159.8	106.2	41.5	128.8	148.5	99.6	183.3	194.4	155.5	240.2	64.1
	JUL	JUL	145.4	106.3	37.7	130.9	153.0	96.6	156.4	170.9	143.5	185.3	54.6
	OGOS	AUG	140.7	109.7	56.4	180.3	120.3	79.8	157.0	195.8	142.2	181.9	53.1
	SEP	SEP	164.0	109.7	51.9	193.4	133.7	106.1	163.9	253.1	169.4	202.9	53.5
	OKT	OCT	167.0	117.4	58.8	181.1	134.1	97.2	175.4	273.6	176.4	194.2	64.1
	NOV	NOV	162.2	121.6	63.3	173.8	130.4	104.4	173.6	241.1	168.9	204.2	65.0
	DIS	DEC	178.8	128.3	78.6	175.6	118.9	114.4	189.8	238.6	204.2	219.5	58.1
2022	JAN	JAN	157.5	111.9	57.4	173.5	105.6	85.0	166.5	234.6	181.2	185.8	64.9
	FEB	FEB	142.1	102.1	49.8	157.9	105.5	75.8	174.1	199.4	159.1	165.4	54.2
	MAC	MAR	174.7	125.2	61.3	208.4	127.0	95.6	185.2	230.1	208.4	207.7	93.4
	APR	APR	167.7	126.9	66.8	217.4	120.1	84.3	197.7	273.9	186.2	208.0	64.8
	MEI	MAY	152.4	108.7	52.2	138.8	130.9	88.1	168.0	204.0	173.7	178.0	54.0
	JUN	JUN	184.1	125.3	50.5	172.1	186.0	108.5	182.9	230.1	197.3	235.0	52.5
	JUL	JUL	166.4	123.4	56.9	200.5	168.2	87.7	174.2	220.2	177.4	198.6	46.4
	OGOS	AUG	179.2	128.2	65.8	186.2	181.2	104.0	172.3	219.5	192.3	218.5	52.2
	SEP	SEP	181.1	122.4	58.5	175.3	155.4	118.4	176.1	214.5	209.8	215.4	47.7
	OKT	OCT	165.3	123.2	62.8	150.1	168.5	99.9	165.8	201.2	178.6	177.1	50.1
	NOV	NOV	163.9	128.3	77.3	168.0	128.4	110.5	170.8	194.9	189.1	191.1	59.3
	DIS	DEC	171.4	128.4	75.5	172.6	131.0	147.5	166.3	207.5	193.4	199.9	54.6
2023	JAN	JAN	148.5	97.7	62.0	164.9	144.1	87.8	141.4	166.0	167.1	153.1	62.6
	FEB	FEB	149.6	112.2	57.5	162.6	145.3	90.8	151.1	193.2	160.1	158.8	43.0
	MAC ^P	MAR ^P	171.1	127.0	84.4	186.8	155.8	119.6	164.7	219.0	183.0	196.7	61.0

MALAYSIA

JADUAL 2B : PERATUS PERUBAHAN BULAN KE BULAN INDEKS VOLUM BAGI EKSPORT (2010=100) MENGIKUT SEKSYEN BARANGAN (S.I.T.C.)

TABLE 2B : MONTH-ON-MONTH PERCENTAGE CHANGE EXPORT VOLUME INDICES (2010=100) BY COMMODITY SECTION (S.I.T.C.)

TEMPOH PERIOD	JUMLAH TOTAL	0 MAKANAN FOOD	1 MINUMAN DAN TEMBAKAU BEVERAGES AND TOBACCO	2 BAHAN-BAHAN MENTAH TIDAK BOLEH DIMAKAN CRUDE MATERIALS, INEDIBLE	3 BAHAN API GALIAN, PELINCIR, DLL. MINERAL FUELS, LUBRICANTS, ETC.	4 MINYAK DAN LEMAK BINATANG DAN SAYUR- SAYURAN ANIMAL AND VEGETABLE OILS AND FATS	5 BAHAN KIMIA CHEMICALS	6 BARANG- BARANG KELUARAN KILANG MANUFACTURED GOODS	7 JENTERA & KELENGKAPAN PENGANGKUTAN MACHINERY & TRANSPORT EQUIPMENT	8 PELBAGAI BARANG KELUARAN KILANG MISCELLANEOUS MANUFACTURED ARTICLES	9 PELBAGAI URUS NIAGA DAN BARANGAN MISCELLANEOUS TRANSACTIONS AND COMMODITIES			
2021	MAC	MAR	17.3	15.4	57.8	0.7	-22.0	30.4	23.8	31.4	25.3	18.3	15.3	
	APR	APR	-1.3	-9.8	-15.8	-8.0	52.0	1.6	-12.5	-6.1	-7.3	-2.2	28.7	
	MEI	MAY	-13.2	-7.2	-25.6	-18.5	-22.6	-5.2	-5.9	-2.8	-14.8	-13.1	-29.2	
	JUN	JUN	11.9	10.0	-16.2	-9.7	12.1	17.5	29.6	-2.6	14.5	8.9	18.0	
	JUL	JUL	-9.0	0.1	-9.0	1.6	3.1	-3.0	-14.7	-12.1	-7.7	-22.8	-14.7	
	OGOS	AUG	-3.2	3.2	49.5	37.8	-21.4	-17.4	0.4	14.6	-0.9	-1.8	-2.8	
	SEP	SEP	16.5	-0.1	-8.1	7.3	11.1	32.9	4.4	29.3	19.2	11.5	0.7	
	OKT	OCT	1.9	7.1	13.4	-6.4	0.3	-8.4	7.0	8.1	4.1	-4.3	19.8	
	NOV	NOV	-2.9	3.6	7.6	-4.0	-2.7	7.5	-1.0	-11.9	-4.3	5.1	1.5	
	DIS	DEC	10.2	5.5	24.2	1.0	-8.8	9.5	9.3	-1.0	20.9	7.5	-10.7	
	2022	JAN	JAN	-11.9	-12.8	-27.0	-1.2	-11.2	-25.7	-12.2	-1.7	-11.3	-15.3	11.8
		FEB	FEB	-9.8	-8.7	-13.2	-9.0	-0.2	-10.9	4.6	-15.0	-12.2	-11.0	-16.5
MAC		MAR	23.0	22.6	23.2	32.0	20.4	26.1	6.4	15.4	30.9	25.6	72.2	
APR		APR	-4.0	1.4	9.0	4.3	-5.5	-11.8	6.7	19.0	-10.6	0.1	-30.6	
MEI		MAY	-9.1	-14.4	-21.9	-36.1	9.0	4.6	-15.1	-25.5	-6.7	-14.4	-16.7	
JUN		JUN	20.8	15.3	-3.1	23.9	42.1	23.1	8.9	12.8	13.5	32.1	-2.7	
JUL		JUL	-9.6	-1.5	12.5	16.5	-9.6	-19.2	-4.7	-4.3	-10.1	-15.5	-11.7	
OGOS		AUG	7.7	3.8	15.8	-7.1	7.7	18.6	-1.1	-0.3	8.4	10.0	12.5	
SEP		SEP	1.1	-4.5	-11.2	-5.8	-14.2	13.8	2.2	-2.3	9.1	-1.4	-8.5	
OKT		OCT	-8.7	0.6	7.4	-14.4	8.4	-15.6	-5.8	-6.2	-14.9	-17.8	5.1	
NOV		NOV	-0.8	4.2	23.0	12.0	-23.8	10.6	3.0	-3.1	5.9	8.0	18.3	
DIS		DEC	4.6	0.1	-2.4	2.7	2.1	33.5	-2.6	6.5	2.3	4.6	-8.0	
2023	JAN	JAN	-13.4	-23.9	-17.9	-4.4	10.0	-40.4	-15.0	-20.0	-13.6	-23.4	14.7	
	FEB	FEB	0.7	14.8	-7.3	-1.4	0.8	3.4	6.9	16.4	-4.2	3.7	-31.3	
	MAC ^P	MAR ^P	14.4	13.2	46.9	14.9	7.2	31.7	9.0	13.4	14.3	23.8	41.9	

MALAYSIA
JADUAL 2C : PERATUS PERUBAHAN TAHUN KE TAHUN INDEKS VOLUM BAGI EKSPORT (2010=100) MENGIKUT SEKSYEN BARANGAN (S.I.T.C.)
TABLE 2C : YEAR-ON-YEAR PERCENTAGE CHANGE EXPORT VOLUME INDICES (2010=100) BY COMMODITY SECTION (S.I.T.C.)

TEMPOH PERIOD	JUMLAH TOTAL	0 MAKANAN FOOD	1 MINUMAN DAN TEMBAKAU BEVERAGES AND TOBACCO	2 BAHAN-BAHAN MENTAH TIDAK BOLEH DIMAKAN CRUDE MATERIALS, INEDIBLE	3 BAHAN API GALIAN, PELINCIR, DLL. MINERAL FUELS, LUBRICANTS, ETC.	4 MINYAK DAN LEMAK BINATANG DAN SAYUR- SAYURAN ANIMAL AND VEGETABLE OILS AND FATS	5 BAHAN KIMIA CHEMICALS	6 BARANG-BARANG KELUARAN KILANG MANUFACTURED GOODS	7 JENTERA & KELENGKAPAN PENGANGKUTAN MACHINERY & TRANSPORT EQUIPMENT	8 PELBAGAI BARANG KELUARAN KILANG MISCELLANEOUS MANUFACTURED ARTICLES	9 PELBAGAI URUS NIAGA DAN BARANGAN MISCELLANEOUS TRANSACTIONS AND COMMODITIES		
2011	-1.9	2.1	10.4	4.6	-4.6	6.2	1.1	7.4	-5.7	-0.6	-2.5		
2012	-0.2	-0.9	18.2	-4.7	4.5	-2.2	1.3	6.1	-4.0	4.5	17.8		
2013	4.2	5.5	3.5	8.1	12.5	-9.5	13.3	9.6	2.0	-3.9	-21.3		
2014	5.3	13.0	3.5	-1.5	4.3	-2.0	3.3	-0.5	8.5	7.5	-3.1		
2015	6.3	1.6	7.5	27.6	7.8	3.7	-1.6	6.8	6.4	9.3	-13.5		
2016	2.6	4.6	0.3	8.7	13.8	-2.6	0.8	-6.2	3.4	2.5	11.6		
2017	11.1	-1.3	-16.1	11.3	1.7	-1.3	4.5	13.2	16.8	13.9	58.0		
2018	5.5	-19.5	-24.5	-4.1	-5.4	-2.6	8.6	10.0	10.8	5.4	-19.8		
2019	-1.6	2.1	-9.9	6.6	-8.8	10.4	0.9	6.4	-3.8	4.1	-10.0		
2020	1.5	-4.4	-27.5	-7.9	3.9	-4.2	-12.3	-6.7	1.3	20.5	-45.8		
2021	14.2	10.4	-7.0	9.0	3.2	-4.1	34.7	36.9	15.3	19.6	12.8		
2022	6.7	10.5	5.5	5.0	5.6	10.8	8.8	4.0	16.9	-8.5	-1.7		
2021	MAC	MAR	28.2	16.2	44.0	1.4	-26.4	17.8	30.2	52.6	36.4	73.8	-3.6
	APR	APR	53.7	17.1	39.5	85.0	41.6	18.1	36.8	80.4	46.3	128.1	626.0
	MEI	MAY	32.9	6.9	4.7	47.4	20.7	-1.5	32.1	54.8	34.2	60.0	24.5
	JUN	JUN	12.7	1.6	-29.4	-17.3	22.7	-14.5	48.4	17.9	9.9	26.2	60.5
	JUL	JUL	-8.3	1.3	-39.5	-28.6	-7.4	-17.0	41.4	5.9	-13.7	-8.3	18.0
	OGOS	AUG	1.7	10.6	-1.0	8.2	-16.5	-14.3	49.8	32.0	4.4	-10.0	19.2
	SEP	SEP	8.4	10.4	-20.8	20.5	15.1	1.4	38.0	62.5	3.6	-2.6	-2.7
	OKT	OCT	7.9	10.6	-8.3	1.0	12.4	-12.6	51.6	71.5	7.8	-13.2	13.2
	NOV	NOV	13.9	24.7	4.6	7.3	3.8	30.1	39.6	51.5	16.1	-3.2	72.5
	DIS	DEC	12.1	21.0	-8.8	4.1	-19.1	-4.4	37.2	26.6	29.2	-1.9	3.3
2022	JAN	JAN	7.2	11.2	-8.7	9.6	-10.6	41.4	29.3	36.0	14.4	-15.9	26.9
	FEB	FEB	0.0	2.2	-0.6	-16.4	-26.9	12.2	25.5	19.9	16.1	-24.6	5.0
	MAC	MAR	4.9	8.6	-22.5	9.6	12.8	8.5	7.8	5.2	21.3	-20.0	56.7
	APR	APR	2.0	22.1	0.4	24.3	-29.8	-5.8	31.6	33.4	16.9	-18.0	-15.5
	MEI	MAY	6.8	12.6	5.4	-2.7	-1.2	3.9	18.8	2.2	28.0	-19.3	-0.6
	JUN	JUN	15.3	18.0	21.8	33.6	25.3	8.9	-0.3	18.3	26.9	-2.1	-18.0
	JUL	JUL	14.4	16.1	50.7	53.2	9.9	-9.3	11.4	28.9	23.7	7.2	-15.1
	OGOS	AUG	27.3	16.8	16.7	3.3	50.6	30.3	9.7	12.1	35.2	20.1	-1.7
	SEP	SEP	10.5	11.6	12.8	-9.4	16.2	11.6	7.4	-15.2	23.8	6.2	-10.8
	OKT	OCT	-1.0	4.9	6.8	-17.1	25.6	2.8	-5.5	-26.5	1.2	-8.8	-21.7
	NOV	NOV	1.1	5.5	22.2	-3.4	-1.6	5.8	-1.6	-19.2	11.9	-6.4	-8.8
	DIS	DEC	-4.1	0.1	-3.9	-1.7	10.2	28.9	-12.3	-13.0	10.2	-5.3	-6.0
2023	JAN	JAN	-5.7	-12.7	8.0	-4.9	36.4	3.3	-15.1	-29.3	-7.8	-17.6	-3.6
	FEB	FEB	5.3	9.8	15.4	3.0	37.8	19.8	-13.2	-3.1	0.6	-4.0	-20.7
	MAC ^p	MAR ^p	-2.1	1.4	37.7	-10.4	22.7	25.1	-11.1	-4.8	-12.2	-5.3	-34.7

MALAYSIA
JADUAL 3A : INDEKS NILAI SEUNIT BAGI IMPORT (2010=100) MENGIKUT SEKSYEN BARANGAN (S.I.T.C.)
TABLE 3A : IMPORT UNIT VALUE INDICES (2010=100) BY COMMODITY SECTION (S.I.T.C.)

TEMPOH PERIOD	JUMLAH TOTAL	0 MAKANAN FOOD	1 MINUMAN DAN TEBAKAU BEVERAGES AND TOBACCO	2 BAHAN-BAHAN MENTAH TIDAK BOLEH DIMAKAN CRUDE MATERIALS, INEDIBLE	3 BAHAN API GALIAN, PELINCIR, DLL. MINERAL FUELS, LUBRICANTS, ETC.	4 MINYAK DAN LEMAK BINATANG DAN SAYUR- SAYURAN ANIMAL AND VEGETABLE OILS AND FATS	5 BAHAN KIMIA CHEMICALS	6 BARANG- BARANG KELUARAN KILANG MANUFACTURED GOODS	7 JENTERA & KELENGKAPAN PENGANGKUTAN MACHINERY & TRANSPORT EQUIPMENT	8 PELBAGAI BARANG KELUARAN KILANG MISCELLANEOUS MANUFACTURED ARTICLES	9 PELBAGAI URUS NIAGA DAN BARANGAN MISCELLANEOUS TRANSACTIONS AND COMMODITIES		
WAJARAN / WEIGHTS	100.0	6.8	0.6	3.3	12.9	1.1	10.5	13.4	41.8	7.6	2.0		
2010	100.0	100.0	100.0	100.0	100.0	100.0	100.0	100.0	100.0	100.0	100.0		
2011	105.5	106.7	101.5	105.4	125.6	135.4	101.8	102.1	101.8	101.5	125.7		
2012	106.9	109.1	100.9	102.0	130.8	110.7	102.2	102.0	103.7	102.6	138.5		
2013	107.2	111.8	102.4	100.3	128.7	88.9	100.8	102.1	105.5	104.0	131.0		
2014	108.3	116.0	103.3	99.4	127.0	103.7	101.1	102.0	107.3	105.1	121.0		
2015	107.4	119.8	103.5	100.9	93.5	97.6	103.0	102.4	111.0	106.5	136.1		
2016	108.9	120.9	105.5	97.6	75.2	116.0	103.1	100.9	116.6	110.7	159.2		
2017	115.5	131.7	109.3	114.0	99.6	145.8	107.3	106.0	119.0	113.2	166.7		
2018	117.8	135.1	112.1	107.1	121.3	125.5	110.0	107.9	118.1	112.1	156.3		
2019	117.4	138.4	115.1	106.7	109.0	110.4	110.4	108.3	120.1	112.6	172.2		
2020	113.9	141.6	117.0	107.2	79.6	127.1	109.7	107.9	119.0	112.5	212.7		
2021	118.4	144.9	118.9	118.7	100.2	188.7	112.5	112.9	117.5	112.7	218.3		
2022	130.2	148.9	120.2	120.2	156.5	272.8	113.1	115.0	123.2	115.5	228.9		
2021	MAC	MAR	115.6	143.2	118.3	117.6	85.8	171.2	111.8	110.8	117.6	112.4	205.0
	APR	APR	116.4	144.1	118.4	120.4	88.3	177.4	112.3	111.6	117.8	112.2	211.8
	MEI	MAY	117.5	144.7	118.7	119.9	94.6	181.6	112.5	112.6	117.4	112.5	218.1
	JUN	JUN	118.1	145.4	119.1	121.0	96.0	189.6	112.8	113.4	117.5	112.6	217.1
	JUL	JUL	119.6	145.7	119.3	120.3	103.8	187.7	113.2	113.9	118.4	112.9	218.7
	OGOS	AUG	120.6	145.8	119.4	120.0	111.3	190.5	113.1	114.2	118.1	113.1	225.6
	SEP	SEP	120.1	145.8	119.5	120.0	110.1	195.1	112.9	114.3	117.1	113.1	220.8
	OKT	OCT	120.8	145.8	119.0	119.8	115.3	197.9	112.9	114.3	117.2	113.3	219.9
	NOV	NOV	122.0	146.1	119.1	119.4	120.4	218.3	113.1	114.4	117.6	113.4	222.6
	DIS	DEC	122.2	146.6	119.3	119.1	117.3	233.6	113.6	114.9	118.2	113.4	227.6
2022	JAN	JAN	121.5	146.7	119.6	118.7	111.9	255.5	113.3	115.1	117.8	113.6	227.9
	FEB	FEB	123.1	146.8	119.7	119.0	122.0	258.5	113.8	115.2	117.9	113.6	230.6
	MAC	MAR	125.9	147.2	120.0	118.7	137.9	268.1	113.9	115.2	118.9	114.1	236.7
	APR	APR	128.9	147.9	119.8	119.4	153.6	283.9	114.2	115.2	120.3	114.5	242.3
	MEI	MAY	132.6	148.8	120.0	120.7	170.4	317.0	113.5	115.5	122.5	114.9	244.1
	JUN	JUN	134.7	148.9	120.0	121.0	183.0	297.1	113.7	115.5	124.0	115.6	240.6
	JUL	JUL	135.1	149.4	120.2	121.1	186.4	284.9	113.1	115.3	124.8	116.1	224.8
	OGOS	AUG	132.4	149.7	120.5	121.5	167.6	273.0	112.7	115.2	124.9	116.2	221.6
	SEP	SEP	132.5	149.7	120.7	121.3	166.1	268.0	112.5	114.8	126.1	116.5	213.1
	OKT	OCT	133.2	150.0	120.8	121.3	160.8	265.4	112.6	114.8	129.3	117.0	219.7
	NOV	NOV	133.2	150.4	120.9	120.7	165.2	264.7	112.5	114.6	127.6	117.1	228.8
	DIS	DEC	129.5	150.8	119.8	119.4	153.8	238.2	111.6	114.2	123.9	116.6	216.6
2023	JAN	JAN	128.0	151.1	119.7	118.9	143.4	239.0	111.1	114.0	123.4	116.3	232.4
	FEB	FEB	128.7	151.2	119.8	117.7	144.9	242.1	110.4	114.1	125.0	116.6	226.0
	MAC ^p	MAR ^p	129.2	152.0	120.0	118.1	144.1	249.4	110.7	114.1	125.7	116.8	234.0

MALAYSIA

JADUAL 3B : PERATUS PERUBAHAN BULAN KE BULAN INDEKS NILAI SEUNIT BAGI IMPORT (2010=100) MENGIKUT SEKSYEN BARANGAN (S.I.T.C.)
TABLE 3B : MONTH-ON-MONTH PERCENTAGE CHANGE IMPORT UNIT VALUE INDICES (2010=100) BY COMMODITY SECTION (S.I.T.C.)

TEMPOH PERIOD			JUMLAH TOTAL	0 MAKANAN FOOD	1 MINUMAN DAN TEBAKAU BEVERAGES AND TOBACCO	2 BAHAN-BAHAN MENTAH TIDAK BOLEH DIMAKAN CRUDE MATERIALS, INEDIBLE	3 BAHAN API GALIAN, PELINCIR, DLL. MINERAL FUELS, LUBRICANTS, ETC.	4 MINYAK DAN LEMAK BINATANG DAN SAYUR- SAYURAN ANIMAL AND VEGETABLE OILS AND FATS	5 BAHAN KIMIA CHEMICALS	6 BARANG- BARANG KELUARAN KILANG MANUFACTURED GOODS	7 JENTERA & KELENGKAPAN PENGANGKUTAN MACHINERY & TRANSPORT EQUIPMENT	8 PELBAGAI BARANG KELUARAN KILANG MISCELLANEOUS MANUFACTURED ARTICLES	9 PELBAGAI URUS NIAGA DAN BARANGAN MISCELLANEOUS TRANSACTIONS AND COMMODITIES	
WAJARAN / WEIGHTS			100.0	6.8	0.6	3.3	12.9	1.1	10.5	13.4	41.8	7.6	2.0	
2021	MAC	MAR	1.0	0.4	0.1	3.0	4.7	5.3	0.4	0.5	0.7	0.3	-4.3	
	APR	APR	0.8	0.6	0.1	2.4	2.8	3.6	0.5	0.7	0.2	-0.1	3.3	
	MEI	MAY	0.9	0.4	0.2	-0.4	7.1	2.4	0.2	0.9	-0.3	0.2	3.0	
	JUN	JUN	0.5	0.5	0.3	0.9	1.6	4.4	0.2	0.7	0.1	0.1	-0.5	
	JUL	JUL	1.3	0.2	0.2	-0.6	8.1	-1.0	0.4	0.4	0.7	0.3	0.7	
	OGOS	AUG	0.9	0.1	0.1	-0.2	7.2	1.5	-0.1	0.3	-0.3	0.2	3.1	
	SEP	SEP	-0.5	0.0	0.0	0.0	-1.1	2.4	-0.2	0.1	-0.8	0.0	0.0	-2.1
	OKT	OCT	0.6	0.0	-0.4	-0.2	4.7	1.4	0.0	0.0	0.0	0.1	0.1	-0.4
	NOV	NOV	1.0	0.2	0.1	-0.3	4.5	10.3	0.2	0.1	0.4	0.1	0.1	1.2
	DIS	DEC	0.2	0.4	0.1	-0.2	-2.6	7.0	0.4	0.5	0.5	0.0	0.0	2.3
2022	JAN	JAN	-0.5	0.1	0.2	-0.3	-4.6	9.3	-0.2	0.1	-0.3	0.1	0.1	
	FEB	FEB	1.3	0.1	0.1	0.2	9.0	1.2	0.5	0.1	0.1	0.0	1.2	
	MAC	MAR	2.3	0.3	0.3	-0.2	13.1	3.7	0.0	0.0	0.8	0.4	2.6	
	APR	APR	2.4	0.5	-0.2	0.6	11.4	5.9	0.3	0.1	1.1	0.4	2.4	
	MEI	MAY	2.8	0.7	0.1	1.0	11.0	11.7	-0.3	0.2	1.9	0.3	0.7	
	JUN	JUN	1.6	0.1	0.1	0.3	7.4	-6.3	0.2	0.0	1.2	0.6	-1.4	
	JUL	JUL	0.3	0.3	0.1	0.0	1.9	-4.1	-0.5	-0.2	0.6	0.4	-6.6	
	OGOS	AUG	-1.9	0.2	0.3	0.3	-10.1	-4.2	-0.4	-0.1	0.1	0.1	0.1	-1.4
	SEP	SEP	0.0	0.0	0.1	-0.2	-0.9	-1.8	-0.2	-0.4	1.0	0.3	0.3	-3.8
	OKT	OCT	0.6	0.2	0.1	0.1	-3.2	-1.0	0.1	0.0	2.5	0.5	0.5	3.1
	NOV	NOV	0.0	0.2	0.1	-0.6	2.7	-0.3	-0.1	-0.2	-1.3	0.1	0.1	4.2
	DIS	DEC	-2.8	0.2	-0.9	-1.0	-6.9	-10.0	-0.8	-0.3	-2.9	-0.4	-0.4	-5.3
2023	JAN	JAN	-1.1	0.2	-0.1	-0.5	-6.8	0.3	-0.4	-0.2	-0.4	-0.3	7.3	
	FEB	FEB	0.6	0.1	0.0	-1.0	1.1	1.3	-0.6	0.1	1.4	0.3	-2.7	
	MAC ^P	MAR ^P	0.4	0.5	0.2	0.3	-0.5	3.0	0.3	0.02	0.5	0.2	3.5	

MALAYSIA

JADUAL 3C : PERATUS PERUBAHAN TAHUN KE TAHUN INDEKS NILAI SEUNIT BAGI IMPORT (2010=100) MENGIKUT SEKSYEN BARANGAN (S.I.T.C.)
TABLE 3C : YEAR-ON-YEAR PERCENTAGE CHANGE IMPORT UNIT VALUE INDICES (2010=100) BY COMMODITY SECTION (S.I.T.C.)

TEMPOH PERIOD	JUMLAH TOTAL	0 MAKANAN FOOD	1 MINUMAN DAN TEBAKAU BEVERAGES AND TOBACCO	2 BAHAN-BAHAN MENTAH TIDAK BOLEH DIMAKAN CRUDE MATERIALS, INEDIBLE	3 BAHAN API GALIAN, PELINCIR, DLL. MINERAL FUELS, LUBRICANTS, ETC.	4 MINYAK DAN LEMAK BINATANG DAN SAYUR-SAYURAN ANIMAL AND VEGETABLE OILS AND FATS	5 BAHAN KIMIA CHEMICALS	6 BARANG- BARANG KELUARAN KILANG MANUFACTURED GOODS	7 JENTERA & KELENGKAPAN PENGANGKUTAN MACHINERY & TRANSPORT EQUIPMENT	8 PELBAGAI BARANG KELUARAN KILANG MISCELLANEOUS MANUFACTURED ARTICLES	9 PELBAGAI URUS NIAGA DAN BARANGAN MISCELLANEOUS TRANSACTIONS AND COMMODITIES		
WAJARAN / WEIGHTS	100.0	6.8	0.6	3.3	12.9	1.1	10.5	13.4	41.8	7.6	2.0		
2011	5.5	6.7	1.5	5.4	25.6	35.4	1.8	2.1	1.8	1.5	25.7		
2012	1.3	2.3	-0.6	-3.2	4.1	-18.2	0.4	-0.1	1.8	1.1	10.1		
2013	0.3	2.5	1.5	-1.6	-1.5	-19.7	-1.4	0.1	1.8	1.4	-5.4		
2014	1.0	3.7	0.9	-0.9	-1.4	16.6	0.3	-0.1	1.7	1.1	-7.6		
2015	-0.8	3.3	0.2	1.5	-26.4	-5.9	1.9	0.4	3.5	1.3	12.4		
2016	1.4	0.9	1.9	-3.3	-19.6	18.9	0.2	-1.4	5.0	4.0	17.0		
2017	6.1	8.9	3.6	16.8	32.5	25.8	4.1	5.0	2.0	2.2	4.7		
2018	2.0	2.6	2.6	-6.0	21.7	-13.9	2.4	1.8	-0.7	-1.0	-6.3		
2019	-0.3	2.5	2.7	-0.3	-10.1	-12.0	0.3	0.4	1.7	0.4	10.2		
2020	-3.0	2.3	1.7	0.4	-27.0	15.1	-0.6	-0.3	-0.9	-0.1	23.6		
2021	3.9	2.3	1.6	10.7	25.8	48.5	2.6	4.6	-1.3	0.2	2.6		
2022	10.0	2.8	1.1	1.3	56.3	44.6	0.5	1.9	4.8	2.4	4.8		
2021	MAC	MAR	-0.5	1.4	1.7	9.7	-9.4	29.3	1.8	3.2	-2.1	-0.5	3.2
	APR	APR	1.5	1.4	1.5	12.7	8.4	43.7	2.1	3.7	-2.5	-0.8	3.6
	MEI	MAY	3.8	1.6	1.5	13.6	32.7	55.6	2.5	4.7	-2.3	-0.5	4.0
	JUN	JUN	5.1	2.3	1.7	15.0	40.1	70.1	3.2	5.6	-1.9	-0.1	4.2
	JUL	JUL	5.6	2.8	1.6	13.2	39.1	59.5	3.5	6.0	-0.9	0.1	0.7
	OGOS	AUG	6.4	3.0	1.8	13.5	47.2	62.0	3.5	5.9	-0.6	0.6	-4.9
	SEP	SEP	6.6	3.0	1.8	12.2	53.5	57.3	3.1	5.7	-0.9	0.8	-2.6
	OKT	OCT	7.5	2.8	1.3	11.0	67.8	53.4	2.8	5.5	-0.7	0.8	-5.0
	NOV	NOV	8.7	2.9	1.4	7.5	78.9	54.4	2.6	5.2	0.0	1.2	-1.1
	DIS	DEC	8.4	3.2	1.3	5.4	63.7	53.5	2.9	5.2	1.2	1.3	4.1
2022	JAN	JAN	7.1	3.2	1.4	5.2	45.0	61.1	2.1	4.9	1.2	1.5	4.1
	FEB	FEB	7.6	2.9	1.3	4.3	48.7	58.9	2.3	4.4	1.0	1.4	7.7
	MAC	MAR	8.9	2.8	1.5	1.0	60.7	56.6	1.9	3.9	1.2	1.5	15.4
	APR	APR	10.7	2.6	1.2	-0.8	74.0	60.0	1.7	3.3	2.1	2.1	14.4
	MEI	MAY	12.8	2.8	1.0	0.6	80.2	74.5	0.9	2.5	4.3	2.1	11.9
	JUN	JUN	14.1	2.4	0.8	0.0	90.5	56.6	0.8	1.8	5.5	2.7	10.8
	JUL	JUL	12.9	2.5	0.7	0.7	79.6	51.8	-0.1	1.2	5.4	2.8	2.8
	OGOS	AUG	9.8	2.6	0.9	1.2	50.6	43.3	-0.4	0.9	5.8	2.7	-1.8
	SEP	SEP	10.3	2.7	1.0	1.0	50.9	37.3	-0.3	0.4	7.7	3.0	-3.5
	OKT	OCT	10.3	2.9	1.5	1.3	39.5	34.1	-0.2	0.4	10.4	3.3	-0.1
	NOV	NOV	9.2	3.0	1.5	1.1	37.2	21.2	-0.5	0.2	8.6	3.3	2.8
	DIS	DEC	6.0	2.8	0.4	0.3	31.1	1.9	-1.8	-0.6	4.8	2.8	-4.9
2023	JAN	JAN	5.3	3.0	0.1	0.1	28.1	-6.5	-2.0	-0.9	4.7	2.4	2.0
	FEB	FEB	4.6	3.0	0.1	-1.1	18.8	-6.3	-3.0	-0.9	6.0	2.6	-2.0
	MAC ^p	MAR ^p	2.6	3.3	0.001	-0.5	4.5	-7.0	-2.8	-0.9	5.6	2.4	-1.1

MALAYSIA
JADUAL 4A : INDEKS VOLUM BAGI IMPORT (2010=100) MENGIKUT SEKSYEN BARANGAN (S.I.T.C.)
TABLE 4A : IMPORT VOLUME INDICES (2010=100) BY COMMODITY SECTION (S.I.T.C.)

TEMPOH PERIOD	JUMLAH TOTAL	0 MAKANAN FOOD	1 MINUMAN DAN TEBBAKAU BEVERAGES AND TOBACCO	2 BAHAN-BAHAN MENTAH TIDAK BOLEH DIMAKAN CRUDE MATERIALS, INEDIBLE	3 BAHAN API GALIAN, PELINCIR, DLL. MINERAL FUELS, LUBRICANTS, ETC.	4 MINYAK DAN LEMAK BINATANG DAN SAYUR-SAYURAN ANIMAL AND VEGETABLE OILS AND FATS	5 BAHAN KIMIA CHEMICALS	6 BARANG- BARANG KELUARAN KILANG MANUFACTURED GOODS	7 JENTERA & KELENGKAPAN PENGANGKUTAN MACHINERY & TRANSPORT EQUIPMENT	8 PELBAGAI BARANG KELUARAN KILANG MISCELLANEOUS MANUFACTURED ARTICLES	9 PELBAGAI URUS NIAGA DAN BARANGAN MISCELLANEOUS TRANSACTIONS AND COMMODITIES		
2010	100.0	100.0	100.0	100.0	100.0	100.0	100.0	100.0	100.0	100.0	100.0		
2011	102.8	106.7	129.4	120.8	102.3	119.1	110.6	112.1	95.8	110.6	103.5		
2012	107.4	109.3	159.2	125.5	125.1	120.9	111.5	112.5	98.3	113.7	98.9		
2013	114.5	114.8	168.5	122.5	154.8	65.6	123.2	127.6	100.1	111.1	130.2		
2014	119.4	121.6	166.4	113.7	171.6	61.7	136.4	130.8	101.7	123.8	133.3		
2015	120.8	125.1	186.6	114.7	171.7	98.8	141.5	133.5	102.2	147.6	120.9		
2016	121.4	127.8	182.5	130.8	181.1	65.3	149.1	132.9	103.6	153.5	89.2		
2017	137.2	128.8	143.1	152.3	203.8	64.2	167.8	141.1	119.8	165.0	119.1		
2018	141.4	122.8	144.4	175.7	197.8	74.5	181.1	145.7	123.5	166.2	118.7		
2019	137.0	122.9	137.4	201.3	214.6	82.1	176.5	139.5	113.3	164.3	97.6		
2020	133.1	129.5	95.3	196.9	224.1	95.3	163.0	128.6	112.3	154.9	80.4		
2021	157.9	145.2	93.9	254.4	235.3	108.2	207.3	143.8	135.6	180.5	134.7		
2022	188.3	167.9	128.7	228.9	289.7	93.0	248.1	168.2	165.2	223.4	125.9		
2021	MAC	MAR	159.1	147.9	92.0	259.8	211.8	112.9	212.9	147.0	130.7	180.6	290.3
	APR	APR	166.6	155.2	96.2	249.8	333.4	96.3	206.1	154.6	131.2	192.3	175.5
	MEI	MAY	152.0	135.7	96.8	252.9	218.4	97.5	205.8	148.9	127.6	188.6	103.6
	JUN	JUN	160.3	153.3	110.4	255.5	263.8	139.5	222.6	153.8	131.3	180.4	61.4
	JUL	JUL	159.0	147.2	89.7	335.2	262.3	112.9	200.8	132.9	134.5	175.5	49.9
	OGOS	AUG	140.0	134.7	93.1	203.2	168.6	101.6	199.1	128.6	126.4	166.4	70.3
	SEP	SEP	160.4	150.9	82.4	252.7	230.9	94.1	210.6	131.7	142.6	177.4	151.1
	OKT	OCT	165.5	146.1	77.4	239.2	249.6	98.8	207.5	136.5	149.5	178.2	166.9
	NOV	NOV	174.2	152.8	99.6	258.1	249.2	106.9	233.2	154.3	156.2	198.6	111.7
	DIS	DEC	173.0	164.3	124.7	255.2	189.6	79.2	237.2	168.4	160.2	208.5	118.5
2022	JAN	JAN	173.1	181.8	109.5	254.7	197.3	86.3	247.3	168.4	155.9	201.1	106.8
	FEB	FEB	152.3	132.7	85.6	211.2	199.7	131.2	221.9	140.0	135.8	175.6	86.2
	MAC	MAR	189.6	167.9	151.7	253.6	301.7	110.3	261.3	173.3	163.1	229.7	78.6
	APR	APR	183.8	157.9	102.9	304.7	258.8	92.5	259.2	177.4	160.9	207.4	92.6
	MEI	MAY	185.0	172.8	103.6	230.5	243.3	74.3	242.8	169.2	171.1	215.3	183.7
	JUN	JUN	209.8	168.9	123.9	241.4	348.4	83.9	279.0	206.7	176.2	232.7	173.1
	JUL	JUL	199.6	167.7	151.6	199.7	331.6	111.0	258.9	177.6	169.9	233.1	168.3
	OGOS	AUG	213.5	184.4	154.6	226.8	421.9	104.1	264.2	168.7	173.5	254.5	134.2
	SEP	SEP	193.1	167.7	130.3	211.7	296.1	111.0	246.8	164.2	173.5	217.1	166.3
	OKT	OCT	193.9	175.6	133.1	191.5	349.4	58.6	230.2	145.5	174.6	215.7	116.2
	NOV	NOV	184.3	171.9	146.5	227.8	249.2	70.4	234.1	160.1	169.7	250.6	113.5
	DIS	DEC	182.1	165.2	151.6	193.1	279.4	81.9	231.1	167.2	158.2	247.7	91.8
2023	JAN	JAN	168.3	161.9	126.9	178.4	261.9	93.5	220.3	156.9	148.0	205.2	73.2
	FEB	FEB	164.1	150.3	121.4	154.6	329.2	72.5	218.0	138.8	133.7	172.0	118.0
	MAC ^P	MAR ^P	181.7	185.4	94.0	232.4	286.3	53.5	242.6	174.9	155.8	219.3	80.8

MALAYSIA

JADUAL 4B : PERATUS PERUBAHAN BULAN KE BULAN INDEKS VOLUM BAGI IMPORT (2010=100) MENGIKUT SEKSYEN BARANGAN (S.I.T.C.)
TABLE 4B : MONTH-ON-MONTH PERCENTAGE CHANGE IMPORT VOLUME INDICES (2010=100) BY COMMODITY SECTION (S.I.T.C.)

TEPOH PERIOD	JUMLAH TOTAL	0 MAKANAN FOOD	1 MINUMAN DAN TEBAKAU BEVERAGES AND TOBACCO	2 BAHAN-BAHAN MENTAH TIDAK BOLEH DIMAKAN CRUDE MATERIALS, INEDIBLE	3 BAHAN API GALIAN, PELINCIR, DLL. MINERAL FUELS, LUBRICANTS, ETC.	4 MINYAK DAN LEMAK BINATANG DAN SAYUR-SAYURAN ANIMAL AND VEGETABLE OILS AND FATS	5 BAHAN KIMIA CHEMICALS	6 BARANG-BARANG KELUARAN KILANG MANUFACTURED GOODS	7 JENTERA & KELENGKAPAN PENGANGKUTAN MACHINERY & TRANSPORT EQUIPMENT	8 PELBAGAI BARANG KELUARAN KILANG MISCELLANEOUS MANUFACTURED ARTICLES	9 PELBAGAI URUS NIAGA DAN BARANGAN MISCELLANEOUS TRANSACTIONS AND COMMODITIES			
2021	MAC	MAR	15.0	20.5	15.0	8.6	-10.2	8.1	23.0	13.7	15.0	16.9	99.5	
	APR	APR	4.7	4.9	4.6	-3.9	57.4	-14.7	-3.2	5.1	0.4	6.5	-39.5	
	MEI	MAY	-8.8	-12.6	0.6	1.2	-34.5	1.3	-0.2	-3.7	-2.7	-1.9	-41.0	
	JUN	JUN	5.5	13.0	14.0	1.0	20.8	43.1	8.2	3.3	2.9	-4.4	-40.8	
	JUL	JUL	-0.9	-4.0	-18.7	31.2	-0.6	-19.1	-9.8	-13.6	2.4	-2.7	-18.7	
	OGOS	AUG	-11.9	-8.5	3.7	-39.4	-35.7	-10.0	-0.8	-3.2	-6.0	-5.1	40.9	
	SEP	SEP	14.6	12.0	-11.4	24.3	36.9	-7.5	5.7	2.4	12.9	6.6	115.0	
	OKT	OCT	3.2	-3.1	-6.2	-5.3	8.1	5.1	-1.5	3.7	4.8	0.4	10.5	
	NOV	NOV	5.2	4.6	28.8	7.9	-0.2	8.2	12.4	13.0	4.5	11.5	-33.1	
	DIS	DEC	-0.7	7.5	25.1	-1.2	-23.9	-25.9	1.7	9.1	2.6	5.0	6.1	
	2022	JAN	JAN	0.1	10.7	-12.2	-0.2	4.1	8.9	4.3	0.0	-2.7	-3.5	-9.9
		FEB	FEB	-12.0	-27.0	-21.8	-17.1	1.2	52.0	-10.3	-16.9	-12.9	-12.7	-19.2
MAC		MAR	24.5	26.5	77.1	20.1	51.1	-15.9	17.8	23.7	20.1	30.8	-8.9	
APR		APR	-3.1	-6.0	-32.2	20.2	-14.2	-16.1	-0.8	2.4	-1.4	-9.7	17.9	
MEI		MAY	0.7	9.4	0.7	-24.4	-6.0	-19.7	-6.3	-4.7	6.4	3.8	98.3	
JUN		JUN	13.4	-2.3	19.6	4.8	43.2	12.8	14.9	22.2	3.0	8.1	-5.8	
JUL		JUL	-4.8	-0.7	22.3	-17.3	-4.8	32.4	-7.2	-14.1	-3.6	0.2	-2.8	
OGOS		AUG	6.9	10.0	2.0	13.6	27.3	-6.2	2.1	-5.0	2.1	9.2	-20.3	
SEP		SEP	-9.6	-9.1	-15.7	-6.6	-29.8	6.6	-6.6	-2.6	0.0	-14.7	23.9	
OKT		OCT	0.4	4.7	2.2	-9.6	18.0	-47.2	-6.7	-11.4	0.6	-0.7	-30.1	
NOV		NOV	-4.9	-2.1	10.0	19.0	-28.7	20.1	1.7	10.0	-2.8	16.2	-2.3	
DIS		DEC	-1.2	-3.9	3.5	-15.2	12.1	16.3	-1.3	4.4	-6.8	-1.2	-19.1	
2023	JAN	JAN	-7.6	-2.0	-16.3	-7.6	-6.3	14.2	-4.7	-6.1	-7.8	-17.2	-20.2	
	FEB	FEB	-2.5	-7.1	-4.4	-13.3	25.7	-22.5	-1.0	-11.5	-9.7	-16.2	61.0	
	MAC ^p	MAR ^p	10.7	23.4	-22.5	50.3	-13.0	-26.2	11.3	25.9	16.5	27.5	-31.5	

MALAYSIA

JADUAL 4C : PERATUS PERUBAHAN TAHUN KE TAHUN INDEKS VOLUM BAGI IMPORT (2010=100) MENGIKUT SEKSYEN BARANGAN (S.I.T.C.)

TABLE 4C : YEAR-ON-YEAR PERCENTAGE CHANGE IMPORT VOLUME INDICES (2010=100) BY COMMODITY SECTION (S.I.T.C.)

TEMPOH PERIOD	JUMLAH TOTAL	0 MAKANAN FOOD	1 MINUMAN DAN TEBAKAU BEVERAGES AND TOBACCO	2 BAHAN-BAHAN MENTAH TIDAK BOLEH DIMAKAN CRUDE MATERIALS, INEDIBLE	3 BAHAN API GALIAN, PELINCIR, DLL. MINERAL FUELS, LUBRICANTS, ETC.	4 MINYAK DAN LEMAK BINATANG DAN SAYUR- SAYURAN ANIMAL AND VEGETABLE OILS AND FATS	5 BAHAN KIMIA CHEMICALS	6 BARANG-BARANG KELUARAN KILANG MANUFACTURED GOODS	7 JENTERA & KELENGKAPAN PENGANGKUTAN MACHINERY & TRANSPORT EQUIPMENT	8 PELBAGAI BARANG KELUARAN KILANG MISCELLANEOUS MANUFACTURED ARTICLES	9 PELBAGAI URUS NIAGA DAN BARANGAN MISCELLANEOUS TRANSACTIONS AND COMMODITIES		
2011	2.8	6.7	29.4	20.9	2.3	19.1	10.6	12.1	-4.2	10.6	3.5		
2012	4.4	2.4	23.0	3.8	22.3	1.5	0.8	0.3	2.5	2.8	-4.5		
2013	6.6	5.0	5.9	-2.4	23.8	-45.7	10.5	13.4	1.8	-2.2	31.7		
2014	4.3	5.9	-1.2	-7.2	10.9	-6.0	10.8	2.5	1.6	11.4	2.4		
2015	1.1	2.9	12.1	0.8	0.0	60.2	3.7	2.1	0.5	19.2	-9.3		
2016	0.6	2.1	-2.2	14.1	5.5	-33.9	5.4	-0.5	1.4	4.0	-26.2		
2017	12.9	0.8	-21.6	16.5	12.6	-1.6	12.5	6.2	15.7	7.5	33.5		
2018	3.1	-4.7	0.9	15.4	-3.0	16.0	8.0	3.3	3.0	0.7	-0.3		
2019	-3.1	0.1	-4.8	14.6	8.5	10.2	-2.5	-4.3	-8.2	-1.2	-17.8		
2020	-2.8	5.3	-30.6	-2.2	4.4	16.0	-7.7	-7.8	-0.9	-5.7	-17.7		
2021	18.6	12.1	-1.4	29.2	5.0	13.6	27.2	11.8	20.7	16.5	67.6		
2022	19.3	15.6	37.0	-10.0	23.1	-14.1	19.7	16.9	21.9	23.8	-6.5		
2021	MAC	MAR	18.3	-0.5	-11.7	25.7	-29.2	23.0	16.2	11.8	32.7	34.0	411.9
	APR	APR	21.1	22.5	39.7	31.2	58.7	13.8	26.7	22.4	-0.9	68.7	749.6
	MEI	MAY	42.9	13.2	35.0	76.2	47.3	95.7	50.0	54.2	33.5	46.2	402.2
	JUN	JUN	25.8	16.7	35.6	46.0	23.4	65.2	45.9	24.4	21.8	12.3	-24.1
	JUL	JUL	17.4	21.0	-1.1	82.0	6.3	19.0	31.5	-2.6	15.5	8.9	-24.9
	OGOS	AUG	5.8	2.6	-6.1	0.7	-24.6	37.5	27.6	6.7	13.4	-0.9	-37.9
	SEP	SEP	18.7	19.2	-18.6	22.0	20.9	-2.7	29.3	-0.9	21.6	4.3	50.1
	OKT	OCT	18.7	12.4	-32.6	13.6	-5.3	28.9	27.3	1.2	26.8	5.8	118.3
	NOV	NOV	27.2	17.6	-15.5	24.9	16.5	5.6	38.7	19.1	34.6	18.6	-11.7
	DIS	DEC	14.2	20.6	7.5	1.3	-7.2	-57.2	23.5	17.0	25.0	13.2	-11.8
2022	JAN	JAN	18.3	38.4	28.6	1.1	-6.2	-44.2	38.6	20.7	26.8	21.9	-38.0
	FEB	FEB	10.1	8.1	7.1	-11.7	-15.3	25.6	28.2	8.2	19.5	13.7	-40.8
	MAC	MAR	19.2	13.5	64.9	-2.4	42.4	-2.2	22.7	-2.4	17.8	24.8	-72.9
	APR	APR	10.3	1.7	6.9	22.0	-22.4	-3.9	25.7	14.8	22.6	7.8	-47.2
	MEI	MAY	21.7	27.4	7.0	-8.8	11.4	-23.8	18.0	13.6	34.1	14.1	77.3
	JUN	JUN	30.8	10.2	12.3	-5.5	32.1	-39.9	25.3	34.4	34.2	29.0	182.1
	JUL	JUL	25.6	13.9	68.9	-40.4	26.4	-1.7	29.0	33.6	26.3	32.9	237.5
	OGOS	AUG	52.5	36.8	66.2	11.6	150.2	2.4	32.7	31.1	37.3	52.9	90.9
	SEP	SEP	20.4	11.2	58.0	-16.2	28.3	18.0	17.2	24.7	21.6	22.4	10.0
	OKT	OCT	17.1	20.2	72.1	-19.9	40.0	-40.7	10.9	6.6	16.8	21.1	-30.4
	NOV	NOV	5.8	12.5	47.0	-11.7	0.0	-34.2	0.4	3.7	8.7	26.2	1.7
	DIS	DEC	5.3	0.6	21.6	-24.3	47.4	3.4	-2.6	-0.7	-1.2	18.8	-22.5
2023	JAN	JAN	-2.8	-11.0	16.0	-30.0	32.7	8.4	-10.9	-6.8	-5.1	2.0	-31.4
	FEB	FEB	7.7	13.3	41.7	-26.8	64.8	-44.7	-1.7	-0.8	-1.5	-2.1	36.8
	MAC ^P	MAR ^P	-4.2	10.4	-38.0	-8.4	-5.1	-51.5	-7.1	0.9	-4.5	-4.5	2.9

MALAYSIA
JADUAL 5A : TERMA PERDAGANGAN (2010=100) MENGIKUT SEKSYEN BARANGAN (S.I.T.C)
TABLE 5A: TERMS OF TRADE (2010=100) BY COMMODITY SECTION (S.I.T.C.)

TEMPOH PERIOD	JUMLAH TOTAL	0 MAKANAN FOOD	1 MINUMAN DAN TEBAKAU BEVERAGES AND TOBACCO	2 BAHAN-BAHAN MENTAH TIDAK BOLEH DIMAKAN CRUDE MATERIALS, INEDIBLE	3 BAHAN API GALIAN, PELINCIR, DLL. MINERAL FUELS, LUBRICANTS, ETC.	4 MINYAK DAN LEMAK BINATANG DAN SAYUR-SAYURAN ANIMAL AND VEGETABLE OILS AND FATS	5 BAHAN KIMIA CHEMICALS	6 BARANG- BARANG KELUARAN KILANG MANUFACTURED GOODS	7 JENTERA & KELENGKAPAN PENGANGKUTAN MACHINERY & TRANSPORT EQUIPMENT	8 PELBAGAI BARANG KELUARAN KILANG MISCELLANEOUS MANUFACTURED ARTICLES	9 PELBAGAI URUS NIAGA DAN BARANGAN MISCELLANEOUS TRANSACTIONS AND COMMODITIES		
2010	100.0	100.0	100.0	100.0	100.0	100.0	100.0	100.0	100.0	100.0	100.0		
2011	105.5	103.8	99.4	118.7	103.5	95.1	110.7	105.7	100.2	104.4	93.6		
2012	105.1	103.2	100.7	106.3	108.6	103.3	108.4	97.0	101.3	105.0	106.8		
2013	103.0	102.0	99.7	94.4	108.7	108.8	109.0	94.1	100.2	105.5	114.1		
2014	103.2	101.0	100.4	85.1	112.1	98.8	115.1	94.8	98.5	106.3	125.4		
2015	99.7	102.6	105.0	81.2	107.2	95.6	123.0	97.8	98.2	109.4	108.5		
2016	96.4	107.4	109.7	81.9	100.3	86.8	129.6	98.8	94.0	108.7	108.2		
2017	97.4	105.3	113.9	80.0	96.6	78.0	138.8	98.6	93.3	109.8	116.1		
2018	97.1	105.9	118.4	79.3	92.5	77.5	140.8	98.2	93.2	112.6	126.5		
2019	98.2	106.0	124.0	78.9	103.0	79.4	139.3	95.0	93.9	114.6	109.4		
2020	98.7	107.0	126.2	78.2	105.4	84.6	140.8	94.4	95.8	115.3	81.6		
2021	104.6	108.6	128.6	75.7	112.6	84.6	145.9	94.8	98.8	117.3	87.8		
2022	111.5	110.2	132.8	76.9	116.0	68.9	156.4	97.3	104.0	115.7	150.3		
2021	MAC	<i>MAR</i>	102.8	108.7	127.5	75.4	113.2	84.6	144.0	94.8	97.3	117.1	87.7
	APR	<i>APR</i>	103.7	108.5	127.9	74.5	115.2	86.6	144.5	95.0	97.7	117.8	86.4
	MEI	<i>MAY</i>	103.5	108.6	128.1	75.0	108.9	87.3	144.8	94.6	98.2	118.0	84.4
	JUN	<i>JUN</i>	105.0	108.5	127.9	74.6	115.1	86.5	145.1	94.7	98.9	117.9	86.4
	JUL	<i>JUL</i>	105.0	108.5	127.8	75.3	113.6	85.1	144.9	94.7	99.3	117.7	86.6
	OGOS	<i>AUG</i>	105.6	108.5	128.5	75.8	111.6	84.9	146.3	95.3	100.1	117.7	86.8
	SEP	<i>SEP</i>	105.9	108.6	129.1	75.9	111.5	85.6	147.3	95.0	100.1	117.5	88.5
	OKT	<i>OCT</i>	106.7	108.6	129.9	76.0	113.1	87.2	148.6	95.1	99.9	116.9	92.5
	NOV	<i>NOV</i>	107.0	108.6	130.6	76.3	114.1	79.9	149.5	94.8	99.9	116.9	93.6
	DIS	<i>DEC</i>	107.1	108.7	131.3	76.9	113.5	77.2	150.1	94.9	100.2	116.9	101.7
2022	JAN	<i>JAN</i>	109.1	108.8	131.1	77.1	121.4	73.0	151.5	95.6	101.9	116.6	100.8
	FEB	<i>FEB</i>	109.9	109.1	131.2	77.1	120.4	73.7	152.0	96.2	102.4	116.3	105.1
	MAC	<i>MAR</i>	112.4	108.9	131.2	77.5	124.6	76.0	153.2	96.7	102.7	115.7	120.6
	APR	<i>APR</i>	110.9	108.9	131.7	77.3	109.5	77.2	154.6	97.6	103.0	115.7	116.8
	MEI	<i>MAY</i>	112.1	109.4	131.5	77.1	108.2	73.3	156.8	97.9	103.6	116.3	142.8
	JUN	<i>JUN</i>	110.7	109.9	131.7	76.8	100.5	76.3	157.0	97.7	103.8	116.1	159.0
	JUL	<i>JUL</i>	112.2	110.2	133.0	77.1	105.6	78.4	157.8	97.7	104.0	116.1	148.4
	OGOS	<i>AUG</i>	111.9	110.9	132.6	77.0	115.6	66.7	157.9	97.2	104.0	115.9	171.0
	SEP	<i>SEP</i>	113.0	111.0	134.1	77.1	124.3	60.7	158.5	97.3	104.2	115.8	169.6
	OKT	<i>OCT</i>	112.4	111.3	134.4	76.6	124.0	58.1	158.7	97.7	104.5	114.8	192.2
	NOV	<i>NOV</i>	111.6	111.8	134.8	75.9	120.0	54.3	159.0	98.0	105.8	114.9	174.3
	DIS	<i>DEC</i>	111.6	111.8	136.2	76.3	117.9	59.2	159.3	97.5	107.6	114.2	202.9
2023	JAN	<i>JAN</i>	111.5	111.6	136.9	76.8	119.1	59.1	159.4	97.9	108.5	114.3	160.2
	FEB	<i>FEB</i>	109.7	111.6	137.2	76.9	113.6	56.8	160.0	97.4	106.6	113.8	193.4
	MAC^P	<i>MAR^P</i>	110.3	112.3	137.1	77.3	112.2	56.9	161.3	97.6	107.6	114.4	249.3

MALAYSIA

JADUAL 5B : PERATUS PERUBAHAN BULAN KE BULAN TERMA PERDAGANGAN (2010=100) MENGIKUT SEKSYEN BARANGAN (S.I.T.C.)

TABLE 5B: MONTH-ON-MONTH PERCENTAGE CHANGE OF TERMS OF TRADE (2010=100) BY COMMODITY SECTION (S.I.T.C.)

TEPOH PERIOD	JUMLAH TOTAL	0 MAKANAN FOOD	1 MINUMAN DAN TEBAKAU BEVERAGES AND TOBACCO	2 BAHAN-BAHAN MENTAH TIDAK BOLEH DIMAKAN CRUDE MATERIALS, INEDIBLE	3 BAHAN API GALIAN, PELINCIR, DLL. MINERAL FUELS, LUBRICANTS, ETC.	4 MINYAK DAN LEMAK BINATANG DAN SAYUR-SAYURAN ANIMAL AND VEGETABLE OILS AND FATS	5 BAHAN KIMIA CHEMICALS	6 BARANG-BARANG KELUARAN KILANG MANUFACTURED GOODS	7 JENTERA & KELENGKAPAN PENGANGKUTAN MACHINERY & TRANSPORT EQUIPMENT	8 PELBAGAI BARANG KELUARAN KILANG MISCELLANEOUS MANUFACTURED ARTICLES	9 PELBAGAI URUS NIAGA DAN BARANGAN MISCELLANEOUS TRANSACTIONS AND COMMODITIES		
2021	MAC	MAR	1.2	-0.1	0.2	-1.5	3.5	-1.3	0.6	0.2	0.4	0.3	8.0
	APR	APR	0.9	-0.2	0.3	-1.2	1.8	2.4	0.4	0.1	0.4	0.6	-1.5
	MEI	MAY	-0.2	0.1	0.1	0.7	-5.4	0.7	0.2	-0.4	0.5	0.2	-2.3
	JUN	JUN	1.4	-0.1	-0.1	-0.5	5.6	-0.8	0.2	0.1	0.7	-0.2	2.4
	JUL	JUL	0.0	0.0	-0.1	0.9	-1.3	-1.7	-0.1	0.1	0.4	-0.1	0.2
	OGOS	AUG	0.6	0.0	0.5	0.7	-1.8	-0.1	0.9	0.6	0.8	0.1	0.2
	SEP	SEP	0.3	0.1	0.4	0.1	-0.1	0.8	0.7	-0.3	0.0	-0.2	2.0
	OKT	OCT	0.8	0.0	0.7	0.1	1.4	1.9	0.9	0.1	-0.2	-0.5	4.6
	NOV	NOV	0.3	0.0	0.5	0.4	0.9	-8.4	0.6	-0.3	0.0	0.0	1.1
	DIS	DEC	0.0	0.1	0.5	0.8	-0.6	-3.4	0.4	0.1	0.3	0.1	8.7
2022	JAN	JAN	1.9	0.0	-0.1	0.3	7.0	-5.5	0.9	0.8	1.7	-0.3	-0.8
	FEB	FEB	0.8	0.3	0.0	-0.1	-0.9	1.0	0.3	0.5	0.6	-0.2	4.3
	MAC	MAR	2.3	-0.1	0.0	0.6	3.5	3.0	0.8	0.6	0.2	-0.6	14.7
	APR	APR	-1.3	0.0	0.3	-0.4	-12.1	1.6	0.9	0.9	0.3	0.0	-3.1
	MEI	MAY	1.1	0.4	-0.1	-0.1	-1.2	-5.0	1.5	0.4	0.6	0.6	22.3
	JUN	JUN	-1.3	0.4	0.1	-0.4	-7.1	4.1	0.1	-0.2	0.2	-0.2	11.3
	JUL	JUL	1.3	0.3	1.0	0.4	5.0	2.8	0.5	0.0	0.2	-0.1	-6.7
	OGOS	AUG	-0.2	0.6	-0.3	-0.1	9.5	-14.8	0.1	-0.5	-0.1	-0.1	15.2
	SEP	SEP	1.0	0.0	1.2	0.1	7.6	-9.0	0.4	0.1	0.2	-0.1	-0.8
	OKT	OCT	-0.6	0.3	0.2	-0.7	-0.2	-4.4	0.1	0.4	0.3	-0.9	13.3
	NOV	NOV	-0.7	0.5	0.3	-0.9	-3.2	-6.5	0.2	0.4	1.3	0.1	-9.3
	DIS	DEC	0.0	-0.1	1.0	0.6	-1.8	9.0	0.2	-0.5	1.6	-0.7	16.4
2023	JAN	JAN	-0.1	-0.1	0.5	0.6	1.1	-0.1	0.1	0.4	0.9	0.1	-21.0
	FEB	FEB	-1.6	0.0	0.3	0.2	-4.6	-4.0	0.3	-0.6	-1.8	-0.4	20.7
	MAC^P	MAR ^P	0.6	0.6	-0.1	0.4	-1.3	0.2	0.8	0.3	1.0	0.5	28.9

MALAYSIA

JADUAL 5C : PERATUS PERUBAHAN TAHUN KE TAHUN TERMA PERDAGANGAN (2010=100) MENGIKUT SEKSYEN BARANGAN (S.I.T.C.)

TABLE 5C: YEAR-ON-YEAR PERCENTAGE CHANGE OF TERMS OF TRADE (2010=100) BY COMMODITY SECTION (S.I.T.C.)

TEMPOH PERIOD	JUMLAH TOTAL	0 MAKANAN FOOD	1 MINUMAN DAN TEBBAKAU BEVERAGES AND TOBACCO	2 BAHAN-BAHAN MENTAH TIDAK BOLEH DIMAKAN CRUDE MATERIALS, INEDIBLE	3 BAHAN API GALIAN, PELINCIR, DLL. MINERAL FUELS, LUBRICANTS, ETC.	4 MINYAK DAN LEMAK BINATANG DAN SAYUR-SAYURAN ANIMAL AND VEGETABLE OILS AND FATS	5 BAHAN KIMIA CHEMICALS	6 BARANG-BARANG KELUARAN KILANG MANUFACTURED GOODS	7 JENTERA & KELENGKAPAN PENGANGKUTAN MACHINERY & TRANSPORT EQUIPMENT	8 PELBAGAI BARANG KELUARAN KILANG MISCELLANEOUS MANUFACTURED ARTICLES	9 PELBAGAI URUS NIAGA DAN BARANGAN MISCELLANEOUS TRANSACTIONS AND COMMODITIES			
2011	5.5	3.8	-0.7	18.7	3.5	-4.9	10.6	5.7	0.2	4.4	-6.5			
2012	-0.3	-0.6	1.3	-10.4	4.8	8.6	-2.0	-8.2	1.2	0.5	14.2			
2013	-2.0	-1.2	-1.0	-11.2	0.2	5.3	0.5	-3.0	-1.2	0.5	6.8			
2014	0.2	-0.9	0.7	-9.8	3.1	-9.2	5.6	0.8	-1.7	0.7	9.9			
2015	-3.4	1.6	4.6	-4.6	-4.4	-3.3	6.9	3.1	-0.3	2.9	-13.5			
2016	-3.3	4.7	4.5	0.8	-6.4	-9.2	5.4	1.0	-4.3	-0.6	-0.2			
2017	1.1	-1.9	3.8	-2.2	-3.7	-10.2	7.1	-0.2	-0.8	1.0	7.3			
2018	-0.4	0.6	4.0	-0.9	-4.2	-0.7	1.4	-0.3	-0.1	2.5	9.0			
2019	1.1	0.0	4.7	-0.5	11.3	2.5	-1.1	-3.3	0.8	1.8	-13.5			
2020	0.5	1.0	1.8	-0.9	2.4	6.5	1.1	-0.7	2.0	0.6	-25.4			
2021	6.0	1.5	1.9	-3.2	6.8	-0.1	3.6	0.5	3.1	1.7	7.5			
2022	6.6	1.5	3.3	1.6	3.0	-18.5	7.1	2.6	5.2	-1.4	71.2			
2021	MAC	MAR	2.9	2.3	1.2	-4.0	2.6	1.0	2.7	-0.1	2.8	2.0	-1.5	
	APR	APR	4.3	2.6	1.4	-5.3	0.7	1.8	3.2	0.1	2.9	2.5	1.2	
	MEI	MAY	6.6	2.6	1.6	-5.2	4.8	3.3	3.5	0.3	3.5	3.0	3.9	
	JUN	JUN	7.4	1.9	1.6	-5.6	6.6	3.8	3.1	0.6	3.0	3.1	6.8	
	JUL	JUL	8.4	1.3	1.4	-3.9	20.2	2.7	3.5	0.4	2.8	2.0	10.1	
	OGOS	AUG	9.2	0.7	1.7	-3.1	22.9	-2.8	3.4	1.1	3.7	1.6	22.9	
	SEP	SEP	7.9	0.7	2.0	-2.1	10.7	-1.9	4.0	1.0	3.7	1.3	21.7	
	OKT	OCT	8.3	0.6	2.5	-2.1	10.9	-1.3	5.0	1.0	3.1	0.7	30.6	
	NOV	NOV	7.5	0.4	3.0	-0.4	1.0	-2.6	5.6	0.5	3.2	0.5	25.4	
	DIS	DEC	6.9	0.3	3.6	1.3	1.8	-6.0	5.4	0.5	3.6	0.6	28.3	
	2022	JAN	JAN	7.9	0.2	3.2	1.2	8.2	-13.0	6.1	1.2	5.2	0.1	29.9
		FEB	FEB	8.3	0.3	3.1	0.7	10.0	-14.0	6.2	1.7	5.7	-0.3	29.4
MAC		MAR	9.4	0.2	2.9	2.8	10.1	-10.2	6.4	2.0	5.5	-1.2	37.4	
APR		APR	7.0	0.4	2.9	3.7	-5.0	-10.9	7.0	2.8	5.4	-1.8	35.2	
MEI		MAY	8.3	0.7	2.7	2.9	-0.7	-16.0	8.3	3.5	5.5	-1.4	69.2	
JUN		JUN	5.5	1.3	2.9	2.9	-12.6	-11.9	8.2	3.2	4.9	-1.5	83.9	
JUL		JUL	6.8	1.6	4.0	2.4	-7.1	-7.8	8.9	3.2	4.8	-1.4	71.4	
OGOS		AUG	6.0	2.3	3.2	1.6	3.6	-21.4	7.9	2.1	3.8	-1.6	97.1	
SEP		SEP	6.8	2.2	3.9	1.6	11.5	-29.1	7.7	2.4	4.0	-1.4	91.7	
OKT		OCT	5.3	2.5	3.4	0.7	9.6	-33.4	6.8	2.7	4.6	-1.8	107.8	
NOV		NOV	4.3	2.9	3.2	-0.5	5.1	-32.1	6.3	3.4	5.9	-1.6	86.2	
DIS		DEC	4.2	2.8	3.7	-0.8	3.9	-23.4	6.1	2.7	7.3	-2.4	99.6	
2023	JAN	JAN	2.2	2.6	4.4	-0.5	-1.9	-19.0	5.2	2.4	6.5	-2.0	58.9	
	FEB	FEB	-0.2	2.3	4.6	-0.2	-5.6	-23.0	5.2	1.3	4.0	-2.2	84.0	
	MAC ^P	MAR ^P	-1.9	3.1	4.5	-0.4	-10.0	-25.2	5.2	0.9	4.8	-1.1	106.8	

JADUAL 6 : INDEKS VOLUM EKSPORT - ASAL & PELARASAN MUSIM (2010=100)
TABLE 6 : EXPORT VOLUME INDICES - ACTUAL & SEASONALLY ADJUSTED (2010=100)

	TEMPOH <i>PERIOD</i>		ASAL <i>ACTUAL</i>	% PERUBAHAN BULAN KE BULAN <i>% CHANGE</i> <i>MONTH-ON-MONTH</i>	PELARASAN MUSIM <i>SEASONALLY ADJUSTED</i>	% PERUBAHAN BULAN KE BULAN <i>% CHANGE</i> <i>MONTH-ON-MONTH</i>
2020	MAC	<i>MAR</i>	129.9	8.3	127.2	-7.4
	APR	<i>APR</i>	106.9	-17.7	105.0	-17.4
	MEI	<i>MAY</i>	107.4	0.4	108.8	3.6
	JUN	<i>JUN</i>	141.8	32.0	152.9	40.6
	JUL	<i>JUL</i>	158.6	11.9	149.7	-2.1
	OGOS	<i>AUG</i>	138.4	-12.7	138.0	-7.8
	SEP	<i>SEP</i>	151.3	9.3	153.2	11.0
	OKT	<i>OCT</i>	154.8	2.4	141.9	-7.3
	NOV	<i>NOV</i>	142.4	-8.0	143.1	0.9
	DIS	<i>DEC</i>	159.5	12.0	153.8	7.5
2021	JAN	<i>JAN</i>	146.8	-7.9	142.0	-7.7
	FEB	<i>FEB</i>	142.0	-3.3	157.2	10.7
	MAC	<i>MAR</i>	166.6	17.3	153.2	-2.6
	APR	<i>APR</i>	164.4	-1.3	152.9	-0.2
	MEI	<i>MAY</i>	142.7	-13.2	143.1	-6.4
	JUN	<i>JUN</i>	159.8	11.9	156.2	9.2
	JUL	<i>JUL</i>	145.4	-9.0	134.9	-13.6
	OGOS	<i>AUG</i>	140.7	-3.2	139.9	3.7
	SEP	<i>SEP</i>	164.0	16.5	152.9	9.2
	OKT	<i>OCT</i>	167.0	1.9	144.7	-5.3
	NOV	<i>NOV</i>	162.2	-2.9	152.2	5.2
	DIS	<i>DEC</i>	178.8	10.2	154.4	1.4
2022	JAN	<i>JAN</i>	157.5	-11.9	155.6	0.8
	FEB	<i>FEB</i>	142.1	-9.8	160.0	2.8
	MAC	<i>MAR</i>	174.7	23.0	170.1	6.4
	APR	<i>APR</i>	167.7	-4.0	162.2	-4.7
	MEI	<i>MAY</i>	152.4	-9.1	158.0	-2.6
	JUN	<i>JUN</i>	184.1	20.8	190.9	20.8
	JUL	<i>JUL</i>	166.4	-9.6	162.1	-15.1
	OGOS	<i>AUG</i>	179.2	7.7	188.7	16.5
	SEP	<i>SEP</i>	181.1	1.1	179.4	-5.0
	OKT	<i>OCT</i>	165.3	-8.7	153.3	-14.5
	NOV	<i>NOV</i>	163.9	-0.8	166.1	8.3
	DIS	<i>DEC</i>	171.4	4.6	161.1	-3.0
2023	JAN	<i>JAN</i>	148.5	-13.4	149.8	-7.0
	FEB	<i>FEB</i>	149.6	0.7	167.5	11.8
	MAC^P	<i>MAR^P</i>	171.1	14.4	165.2	-1.4

JADUAL 7 : INDEKS VOLUM IMPORT - ASAL & PELARASAN MUSIM (2010=100)
TABLE 7 : IMPORT VOLUME INDICES - ACTUAL & SEASONALLY ADJUSTED (2010=100)

TEMPOH PERIOD			ASAL ACTUAL	% PERUBAHAN BULAN KE BULAN % CHANGE MONTH-ON-MONTH	PELARASAN MUSIM SEASONALLY ADJUSTED	% PERUBAHAN BULAN KE BULAN % CHANGE MONTH-ON-MONTH	
2020	MAC	MAR	134.5	11.1	132.9	-1.3	
	APR	APR	137.5	2.2	132.1	-0.6	
	MEI	MAY	106.4	-22.7	104.7	-20.8	
	JUN	JUN	127.5	19.9	131.1	25.2	
	JUL	JUL	135.4	6.2	132.5	1.1	
	OGOS	AUG	132.3	-2.3	131.2	-1.0	
	SEP	SEP	135.2	2.2	136.7	4.2	
	OKT	OCT	139.4	3.2	136.2	-0.4	
	NOV	NOV	136.9	-1.8	133.5	-2.0	
	DIS	DEC	151.5	10.6	146.5	9.7	
	2021	JAN	JAN	146.3	-3.4	143.5	-2.0
		FEB	FEB	138.4	-5.4	154.6	7.7
MAC		MAR	159.1	15.0	159.3	3.0	
APR		APR	166.6	4.7	160.9	1.0	
MEI		MAY	152.0	-8.8	152.2	-5.4	
JUN		JUN	160.3	5.5	167.4	10.0	
JUL		JUL	159.0	-0.9	155.9	-6.9	
OGOS		AUG	140.0	-11.9	139.5	-10.5	
SEP		SEP	160.4	14.6	162.4	16.4	
OKT		OCT	165.5	3.2	162.4	0.0	
NOV		NOV	174.2	5.2	169.5	4.4	
DIS		DEC	173.0	-0.7	166.8	-1.6	
2022	JAN	JAN	173.1	0.1	169.7	1.7	
	FEB	FEB	152.3	-12.0	170.2	0.3	
	MAC	MAR	189.6	24.5	189.9	11.6	
	APR	APR	183.8	-3.1	177.0	-6.8	
	MEI	MAY	185.0	0.7	185.6	4.9	
	JUN	JUN	209.8	13.4	219.0	18.0	
	JUL	JUL	199.6	-4.8	195.8	-10.6	
	OGOS	AUG	213.5	6.9	213.4	9.0	
	SEP	SEP	193.1	-9.6	195.5	-8.4	
	OKT	OCT	193.9	0.4	189.6	-3.0	
	NOV	NOV	184.3	-4.9	179.7	-5.2	
	DIS	DEC	182.1	-1.2	175.4	-2.4	
2023	JAN	JAN	168.3	-7.6	165.6	-5.6	
	FEB	FEB	164.1	-2.5	183.6	10.9	
	MAC ^P	MAR ^P	181.7	10.7	175.7	-4.3	



3. NOTA TEKNIKAL *TECHNICAL NOTES*

NOTA TEKNIKAL

1. PENGENALAN

- 1.1 Indeks Perdagangan Luar Negeri (IPLN) mengukur perubahan paras nilai seunit serta volum eksport dan import barangan Malaysia. Indeks ini mencerminkan peratusan kenaikan atau penurunan dalam paras nilai seunit dan volum.
- 1.2 IPLN telah disusun buat kali pertama dengan menggunakan tahun 1970 sebagai tahun asas (1970=100) dan seterusnya diikuti dengan 1999=100, 2005=100 dan 2010 =100 mulai penerbitan bagi bulan rujukan Januari 2016.
- 1.3 Mulai penerbitan keluaran bulan rujukan Januari 2018, IPLN telah dikemaskini menggunakan "bakul" barangan tahun 2013 dengan mengekalkan tahun asas yang sama, 2010=100. Seterusnya, IPLN (2010=100) dikemaskini sekali lagi menggunakan "bakul" barangan tahun 2015 bermula daripada penerbitan bulan rujukan Januari 2019.

2. OBJEKTIF

- 2.1 Indeks nilai seunit dan volum adalah penunjuk ekonomi utama yang mempunyai pelbagai kegunaan.
- 2.2 Berikut adalah kegunaan utama indeks ini:
 - 2.2.1 Ia mengukur setakat mana perubahan nilai eksport dan import adalah disebabkan oleh perubahan dalam nilai seunit dan perubahan volum.
 - 2.2.2 Ia membolehkan penggubal dasar menilai kesan harga eksport berbanding dengan harga import barangan (yang mana lebih dikenali sebagai terma perdagangan).
 - 2.2.3 Ia boleh digunakan untuk membuat unjuran untuk memastikan perubahan harga, output dan sebagainya yang mungkin berlaku pada masa depan. Perbandingan dan unjuran ini akan memudahkan keputusan dibuat di peringkat syarikat, industri dan kerajaan.
 - 2.2.4 Ia juga dapat mengukur perubahan nilai benar import dan eksport Malaysia mengikut masa dengan menggunakan kaedah "*deflation*".

3. SUMBER DATA

Data yang digunakan dalam pengiraan indeks nilai seunit dan volum diperoleh daripada data perdagangan luar negeri Malaysia yang sebahagian besarnya diproses daripada borang pengiklanan kastam.

4. PROSEDUR PENGIRAAN

- 4.1 Prosedur yang digunakan untuk menghasilkan Indeks Nilai Seunit adalah seperti berikut:
 - i. Mengira nilai seunit bagi setiap barangan SITC yang terpilih;
 - ii. Mengira nilai seunit relatif;
 - iii. Mengira wajaran nilai;
 - iv. Mendarab setiap relatif dengan wajaran yang berkaitan;
 - v. Menjumlahkan hasil darab;
 - vi. Membahagikan hasil darab dengan jumlah wajaran.

- 4.2 Indeks nilai seunit relatif purata aritmetik yang berwajarkan nilai tempoh asas adalah bersamaan dengan indeks nilai seunit Laspeyres.

$$p^L = \frac{\sum p_n (p_o q_o)}{\sum (p_o q_o)} \times 100$$

di mana

p^L	=	Indeks nilai seunit Laspeyres;
p_n	=	Nilai seunit barangan pada tempoh tertentu;
p_o	=	Nilai seunit barangan pada tempoh asas;
$p_o q_o$	=	Wajaran tahun asas

- 4.3 Indeks volum eksport dan import adalah dihasilkan secara tidak langsung daripada pembahagian indeks nilai eksport dan import dengan indeks nilai seunit eksport dan import yang berkaitan. Dalam kes ini, indeks volum yang dibentuk adalah indeks volum Paasche.

- 4.4 Berkuatkuasa mulai penerbitan bulan rujukan Januari 2019, kaedah indeks rantaian Laspeyres akan digunakan dalam pengiraan IPLN (2010=100) dengan menggunakan Disember 2018 sebagai bulan pautan.

IPLN dihitung sebagai indeks rantaian bakul tetap. Ini bermakna bahawa urutan indeks bakul tetap dirantai bersama untuk mewujudkan satu siri masa yang berterusan. Perkara ini perlu untuk mengelakkan perubahan yang tidak dijangka dalam indeks apabila pengemaskinian bakul dilakukan.

Indeks nilai seunit bulan rujukan dihitung berdasarkan perubahan indeks bulan tersebut kepada bulan pautan (bakul baru) didarabkan dengan indeks bulan pautan (bakul lama).

$$P_{t/10}^{ch} = P_{t/D18}^{baru} \times P_{D18/10}^{lama}$$

di mana,

$P_{t/10}^{ch}$	=	Indeks rantaian yang mengukur perubahan nilai seunit dari 2010 kepada sebarang tempoh t
$P_{t/D18}^{baru}$	=	Indeks komposit siri baru yang membandingkan nilai seunit pada sebarang tempoh t kepada bulan pautan
$P_{D18/10}^{lama}$	=	Indeks komposit siri lama yang membandingkan nilai seunit bagi Disember 2018 kepada nilai seunit 2010

- 4.5 Dalam pengiraan indeks, tarif individu telah dikelaskan mengikut *Standard International Trade Classification, Revision 4 (S.I.T.C. Rev 4)* daripada Pertubuhan Bangsa-Bangsa Bersatu.

- 4.6 Indeks import menggunakan nilai 'kos, insuran dan tambang' (*c.i.f.*), sementara indeks eksport dikira menggunakan nilai 'free on board' (*f.o.b.*).

- 4.7 Indeks ini disusun dengan menggunakan tahun 2010 sebagai asas. Siri indeks adalah seperti berikut:

i	Indeks nilai seunit eksport
ii	Indeks volum eksport
iii	Indeks nilai seunit import
iv	Indeks volum import
v	Indeks terma perdagangan

4.8 Indeks ini disusun setiap bulan manakala indeks tahunan dikira berdasarkan data siri bulanan.

4.9 Indeks ini akan disebarakan di peringkat SITC-1-digit dan Malaysia.

5. LIPUTAN

Sebanyak 786 barangan eksport yang mewakili kira-kira 84.4 peratus daripada jumlah nilai eksport yang dicatatkan pada tahun 2015 dan 1,583 barangan import yang meliputi kira-kira 83.0 peratus daripada jumlah nilai import tahun 2015 masing-masing digunakan dalam pengiraan indeks import dan eksport.

6. WAJARAN

Wajaran yang digunakan dalam jenis indeks ini adalah nilai. Data yang digunakan untuk menghasilkan wajaran ini adalah daripada nilai import dan eksport barang dagangan Malaysia tahun 2015. Wajaran yang diagihkan adalah mengikut nilai tersebut pada peringkat SITC-1-digit.

7. KONSEP DAN DEFINISI

7.1 Indeks Nilai Seunit

Perubahan harga dalam perdagangan barangan luar negeri ditunjukkan oleh perubahan indeks nilai seunit perdagangan barangan luar negeri yang disusun berdasarkan nilai seunit.

Jadual 1A, 1B dan 1C menyediakan ringkasan perubahan nilai seunit eksport dan Jadual 3A, 3B dan 3C pula, indeks nilai seunit import. Arah aliran komponen nilai seunit adalah ditunjukkan dalam indeks ini, yang mana menyatakan hubungan di antara nilai tempoh semasa dan tempoh asas bagi sesuatu bakul yang mengandungi volum barangan tertentu.

7.2 Indeks Volum

Perubahan volum perdagangan barangan luar negeri diperoleh daripada perubahan nilai perdagangan barangan luar negeri setelah dikeluarkan kesan perubahan harga.

Jadual 2A, 2B dan 2C menyediakan ringkasan perubahan indeks volum eksport dan Jadual 4A, 4B dan 4C, indeks volum import. Arah aliran komponen volum adalah ditunjukkan dalam indeks ini, yang mana menyatakan hubungan di antara nilai tempoh semasa dan tempoh asas bagi satu set nilai seunit tertentu.

7.3 Terma Perdagangan.

Indeks nilai seunit eksport dan import boleh digunakan untuk mengukur terma perdagangan Malaysia. Indeks terma perdagangan dikira berasaskan kepada nisbah indeks nilai seunit eksport kepada indeks nilai seunit import.

Jadual 5A, 5B dan 5C menyediakan ringkasan perubahan indeks terma perdagangan. Indeks ini dikira dengan mendapatkan nisbah indeks nilai seunit eksport kepada indeks nilai seunit import. Ia menggambarkan kos sesuatu volum yang diimport dari segi volum yang dieksport. Suatu kenaikan dalam terma perdagangan menunjukkan pergerakan yang lebih menguntungkan dan kejatuhan membawa kesan yang sebaliknya. Satu nilai indeks yang lebih atau kurang daripada 100 mencerminkan terma perdagangan yang lebih atau kurang menguntungkan berbanding dengan terma perdagangan tahun asasnya 2010.

8. METODOLOGI

- 8.1 Proses pemadanan kod dilaksanakan bagi menyelaraskan kod *Harmonization System* (HS) 2017 dengan HS2022 yang digunakan bermula Jun 2022.
- 8.2 *Lumpy import* (seperti import kapal terbang dan kapal) adalah tidak termasuk dalam penyusunan.
- 8.3 Kod produk yang mempunyai transaksi kurang dari 7 bulan dalam setahun juga tidak diambil kira.

9. PELARASAN MUSIM

Data siri masa adalah amat berguna untuk ahli ekonomi, pembuat dasar & polisi dan penganalisis siri masa untuk mengenal pasti ciri-ciri penting siri ekonomi seperti arah, *turning point* dan konsistensi antara penunjuk ekonomi yang lain. Kadangkala ciri ini sukar untuk diperhatikan kerana pergerakan bermusim. Oleh itu, sekiranya kesan bermusim boleh disingkirkan, perilaku data siri ini dapat dilihat dengan lebih baik. Anggaran dan penyingkiran kesan bermusim dipanggil **pelarasan bermusim**.

Pelarasan bermusim adalah satu proses untuk mengenal pasti dan menyingkirkan bentuk pola bermusim yang biasa berlaku dalam tempoh satu tahun, yang mungkin juga merangkumi pengaruh dari kesan cuti yang bergerak dan hari bekerja/ berdagang bagi suatu tempoh. Objektif utama proses ini adalah untuk menyerlahkan arah aliran dan pergerakan-pergerakan jangka pendek dalam siri ini.

Di Malaysia, kebanyakan data siri masa terjejas oleh kesan bermusim. Oleh itu, untuk menghapuskan kesan bermusim dan juga melaras musim data siri masa ekonomi Malaysia, X-12 ARIMA telah digunakan sebagai pakej pelarasan bermusim standard oleh Jabatan Perangkaan, Malaysia.

Data siri masa ekonomi Malaysia kerap dipengaruhi oleh perayaan agama utama seperti Aidil Fitri, Tahun Baru Cina dan Deepavali. Tarikh perayaan ini tetap mengikut tahun lunar tetapi berbeza-beza mengikut kalendar Gregorian. Oleh itu, untuk menganggar dan menyingkirkan kesan cuti yang bergerak dari data siri masa, satu prosedur telah dibangunkan iaitu Seasonal Adjustment For Malaysia (SEAM).

Kaedah SEAM digunakan untuk membuang kesan bermusim bagi data indeks perdagangan luar negeri Malaysia. Pelarasan musim hanya dibuat ke atas data bulanan bagi indeks volum eksport dan indeks volum import. Siri data pelarasan bermusim untuk tiga tahun sebelumnya akan disemak setiap tahun apabila data untuk 12 bulan lengkap.

10. DASAR PINDAAN

Dasar bulan semasa adalah provisional (p) dan tertakluk kepada pindaan sehingga ia dimuktamadkan. Pindaan dibuat sekiranya wujud maklumat tambahan. Data muktamad perangkaan Perdagangan Luar Negeri 2021 telah digunakan bermula penerbitan Jun 2022 bagi perubahan dalam indeks volum yang menggunakan kaedah Paasche.

TECHNICAL NOTES

1. INTRODUCTION

- 1.1 *External trade indices (ETI) measure changes in the levels of unit values and volumes of Malaysia's imports and exports. The index numbers, which reflect the percentage rise or fall of unit value and volume levels.*
- 1.2 *ETI were first constructed with 1970 as the base year (1970=100) and then base year 1999=100 and 2005=100 subsequently. Currently the indices are rebased to 2010=100, commencing from reference month January 2016.*
- 1.3 *Commencing in reference month of January 2018, ETI was updated using the "basket" of goods for year 2013 by maintaining the same base year, 2010 = 100. Subsequently, ETI (2010=100) has been updated again using the 2015 "basket" of goods starting from reference month January 2019.*

2. OBJECTIVE

- 2.1 *The external trade unit value and volume indices are key economic indicators which have a variety of applications and uses.*
- 2.2 *The following are the main uses of these indices:*
 - 2.2.1 *They provide a measure of the extent to which changes in the values of exports and imports are due to changes in price/unit value levels and the extent to which value changes are accounted for by volume changes.*
 - 2.2.2 *They enable policy makers to assess the effects of price change in exports with those in imports (which is referred to as terms of trade) for commodities.*
 - 2.2.3 *They can be utilized for making projections to ascertain likely future changes in prices, output and so on. These comparisons and projections facilitate decision making at company, industry and government level.*
 - 2.2.4 *They also measure the changes in the real value of Malaysian imports or exports over time using the deflation method.*

3. SOURCES OF DATA

Data used in calculating the export and import unit value and volume indices is derived from Malaysia external trade data which is in turn mainly processed from import and export custom declaration forms.

4. COMPUTATIONAL PROCEDURE

- 4.1 *The procedure used to derive Unit Value Index is as follows:*
 - I. *Compute unit values for each selected SITC commodity item;*
 - II. *Compute unit value relatives;*
 - III. *Compute value weights;*
 - IV. *Multiply each relative by the corresponding weight;*
 - V. *Total the product;*
 - VI. *Divide these totals by the sum of the weights.*

- 4.2 The weighted arithmetic mean of relative unit value index, in which the weights are equal to base-period values, is equivalent to Laspeyres unit value index:

$$p^L = \frac{\sum \frac{P_n}{P_o} (p_o q_o)}{\sum (p_o q_o)} \times 100$$

where

p^L	=	Laspeyres unit value index;
p_n	=	Commodity unit values in the given period;
p_o	=	Commodity unit values in the base period;
$p_o q_o$	=	Base year weights

- 4.3 Volume indices for exports and imports are derived indirectly by deflating indices of values of exports and imports with the corresponding export and import unit value indices. In this case, the resulting indirect volume index will be Paasche volume index.
- 4.4 Effective from the reference month for January 2019, Laspeyres chain index method will be used in the calculation of the ETI which employs December 2018 as the link month.

ETI are calculated as a chain of fixed-basket indices. This means that a sequence of fixed-basket indices have been chained together to create a continuous time series. This is necessary to avoid having breaks in an index when a basket update is performed.

Unit value indices for reference month are calculated based on changes of index for that month over the link month (new basket) multiplied by the link month index (old basket).

$$P_{t/10}^{ch} = P_{t/D18}^{new} \times P_{D18/10}^{old}$$

where,

$P_{t/10}^{ch}$	=	Chain index which measures the changes in unit value from 2010 to any period
$P_{t/D18}^{new}$	=	A new series composite index that compares the unit value at any period t to the link month
$P_{D18/10}^{old}$	=	the old series composite index which compares the unit value for December 2018 to the 2010 unit value

- 4.5 Import indices use 'cost, insurance and freight' (c.i.f.) values, while export indices are calculated using 'free on board' (f.o.b.) values.
- 4.6 The indices are compiled using the year 2010 as the base. These series relate to:
- i Unit value indices of exports
 - ii Volume indices of exports
 - iii Unit value indices of imports
 - iv Volume indices of imports
 - v Terms of trade indices
- 4.7 These indices are compiled for each calendar month while the annual indices are computed from the monthly series.
- 4.8 The indices will be disseminated at the 1-digit SITC section.

5. **COVERAGE**

Approximately 786 export items representing about 84.4 percent of the total value of exports recorded in 2015 and 1,583 import items accounting for about 83.0 percent of the total value of imports in 2015 are used in the calculation of the index of imports and exports, respectively.

6. **WEIGHT**

The weights used in this type of index are values. The data used to derive the weights are the values of Malaysia imports and exports of merchandise during 2015. Weights are allocated in accordance with these values at 1-digit SITC level.

7. **CONCEPT AND DEFINITIONS**

7.1 *Unit Value Indices*

Price changes in external merchandise trade are reflected by changes in unit value indices of external merchandise trade which are compiled based on unit value.

Table 1A, 1B and 1C provides a summary of changes in the export unit value indices and Table 3A, 3B and 3C, of the import unit value indices. Trends in unit value component are illustrated by these indices, which expresses the relationship between value in the current period and the value in the base period of a given basket containing specific quantities of goods.

7.2 *Volume Indices*

Changes in volume of external merchandise trade are derived from changes in external merchandise trade value with the effect of price changes that has been discounted.

Table 2A, 2B and 2C provides a summary of the export volume indices and Table 4A, 4B and 4C, of the import volume indices. Trends in the quantity component are illustrated by this index, which expresses the relationship between the value of a given set of unit values for the current period and the value for the base period.

7.3 *Terms of Trade*

The export and import unit value indices can be used to measure the Malaysia's terms of trade. The terms of trade index is calculated based on the ratio of unit value index of exports to the unit value index of imports.

Table 5A, 5B and 5C provides a summary of changes in the terms of trade indices. The index is calculated as the ratio of the export unit value index to the import unit value index. It represents the cost of a given volume of imports in terms of exports. A rise in the terms of trade indicates a favourable movement and a fall, an adverse movement. An index value above or below 100 indicates the terms of trade are either more or less favorable than the 2010 base period.

8. **METHODOLOGY**

8.1 *The process of mapping the code has been implemented to streamline the code Harmonization System (HS) 2017 to HS2022 which was in use from June 2022.*

8.2 *Lumpy imports (such as import of aircraft and vessel) are excluded from the compilation.*

8.3 *The product codes which have less than seven transactions in a year are also excluded.*

9. SEASONAL ADJUSTMENT

Time-series data are very useful for economists, policy & decision makers and time-series analysts to identify the important features of economic series such as direction, turning point and consistency between other economic indicators. Sometimes this feature is difficult to observe because of seasonal movements. Thus, if the seasonal effect can be removed, the behaviour of the series would be better viewed. The estimation and removal of the seasonal effects is called seasonal adjustment.

Seasonal adjustment is a process to identify and to remove the regular within-a-year seasonal pattern, which may also include the influences of moving holidays and working/trading days effect in each period. The ultimate objective of the process is to highlight the underlying trends and short-term movements in the series.

In Malaysia, most of the time series data are affected by seasonal effects. Hence, to eliminate the seasonal effect as well as to seasonally adjust the Malaysian economic time series data, X-12 ARIMA was used as a standard seasonal adjustment package by Department of Statistics, Malaysia.

Malaysian economic time series data are often affected by major religious festivals such as Eid-ul Fitr, Chinese New Year and Deepavali. These festivals' dates are fixed according to the lunar year but vary according to the Gregorian calendar. Therefore, to estimate and remove moving holiday effect from time-series data, a procedure was developed, namely Seasonal Adjustment for Malaysia (SEAM).

The SEAM method is used to remove seasonal effect for Malaysia's external trade indices data. The seasonal adjustment is only carried out on monthly export and import volume indices. The seasonally adjusted series data for the preceding three years are revised each year when the figures for complete 12 months become available.

10. REVISION POLICY

Data for the current month is provisional(p) and subject to revision until it is finalized. Revisions are made if there are additional information. Final data external trade statistics 2021 has been used starting from the June 2022 publication for the change in volume index using Paasche index method.

4. LAMPIRAN

APPENDIX

**PERBANDINGAN WAJARAN MENGIKUT SEKSYEN ANTARA BAKUL 2013 DAN 2015 YANG DIGUNAKAN DALAM
INDEKS PERDAGANGAN LUAR NEGERI, IPLN (2010=100)**

*COMPARISON OF WEIGHTS BY SECTIONS BETWEEN 2013 AND 2015 BASKETS USED IN THE EXTERNAL TRADE INDEX,
ETI (2010=100)*

SEKSYEN SECTIONS	EKSPORT EXPORTS		WAJARAN WEIGHTS	
	2013	2015	2013	2015
0 Makanan <i>Food</i>	3.0	3.520	6.2	6.839
1 Minuman & Tembakau <i>Beverages and Tobacco</i>	0.5	0.600	0.6	0.662
2 Bahan Mentah Tidak Boleh Dimakan <i>Inedible Crude Materials</i>	2.6	2.725	3.8	3.351
3 Minyak Galian <i>Mineral Fuels</i>	22.7	16.097	17.3	12.865
4 Minyak & Lemak Binatang & Sayur-sayuran <i>Animal & Vegetable Oils & Fats</i>	6.9	6.016	0.7	1.070
5 Bahan Kimia <i>Chemicals</i>	7.2	7.781	9.6	10.513
6 Barang-barang Keluaran Kilang <i>Manufactured Goods</i>	9.3	9.647	13.7	13.371
7 Alat Jentera & Kelengkapan Pengangkutan <i>Machinery & Transport Equipment</i>	37.9	42.255	40.1	41.794
8 Pelbagai Barang Keluaran Kilang <i>Miscellaneous Manufactured Articles</i>	9.3	10.929	6.0	7.572
9 Pelbagai Urusniaga & Barangan <i>Miscellaneous Transactions & Commodities</i>	0.6	0.430	2.0	1.963
JUMLAH <i>Total</i>	100.0	100.0	100.0	100.0

JADUAL TARIKH PENGELUARAN INDEKS PERDAGANGAN LUAR NEGERI (2010=100), JANUARI - DISEMBER 2023
SCHEDULE OF RELEASE DATES FOR EXTERNAL TRADE INDICES (2010=100), JANUARY - DECEMBER 2023

BULAN RUJUKAN <i>REFERENCE MONTH</i>		TARIKH PENGELUARAN PENERBITAN <i>RELEASE DATES OF PUBLICATION</i>	
JANUARI <i>JANUARY</i>	28	FEBRUARI <i>FEBRUARY</i>	2023
FEBRUARI <i>FEBRUARY</i>	28	MAC <i>MARCH</i>	2023
MAC <i>MARCH</i>	28	APRIL <i>APRIL</i>	2023
APRIL <i>APRIL</i>	26	MEI <i>MAY</i>	2023
MEI <i>MAY</i>	28	JUN <i>JUNE</i>	2023
JUN <i>JUNE</i>	28	JULAI <i>JULY</i>	2023
JULAI <i>JULY</i>	28	OGOS <i>AUGUST</i>	2023
OGOS <i>AUGUST</i>	27	SEPTEMBER <i>SEPTEMBER</i>	2023
SEPTEMBER <i>SEPTEMBER</i>	27	OKTOBER <i>OCTOBER</i>	2023
OKTOBER <i>OCTOBER</i>	28	NOVEMBER <i>NOVEMBER</i>	2023
NOVEMBER <i>NOVEMBER</i>	28	DISEMBER <i>DECEMBER</i>	2023
DISEMBER <i>DECEMBER</i>	26	JANUARI <i>JANUARY</i>	2024

PENERBITAN INI AKAN DITERBITKAN DI LAMAN WEB JABATAN PERANGKAAN MALAYSIA
 (<http://www.statistics.gov.my>) PADA TARIKH PENGELUARAN SELEPAS MASA EMBARGO (12.00 PM)

*THIS PUBLICATION WILL BE POSTED ON THE WEBSITE OF THE DEPARTMENT OF STATISTICS MALAYSIA
 (<http://www.statistics.gov.my>) ON THE RELEASE DATE AFTER THE EMBARGO TIME (12.00 PM)*



20 OKT 2016-2030



MALAYSIA MADANI

www.dosm.gov.my



@StatsMalaysia

