



KEMENTERIAN EKONOMI  
JABATAN PERANGKAAN MALAYSIA

# INDEKS PERDAGANGAN LUAR NEGERI

*External Trade Indices*

**2023** DISEMBER  
DECEMBER



JABATAN PERANGKAAN MALAYSIA  
DEPARTMENT OF STATISTICS MALAYSIA



KEMENTERIAN EKONOMI  
JABATAN PERANGKAAN MALAYSIA

# INDEKS PERDAGANGAN LUAR NEGERI *EXTERNAL TRADE INDICES* (2010=100)

DISEMBER 2023  
*DECEMBER 2023*

## **Pemakluman**

Jabatan Perangkaan Malaysia (DOSM) telah melancarkan OpenDOSM NextGen sebagai medium yang menyediakan katalog data dan visualisasi bagi memudahkan pengguna menganalisis pelbagai data dan boleh diakses melalui portal <https://open.dosm.gov.my>.

DOSM akan menjalankan Banci Pertanian pada tahun 2024. Mohon layari <https://www.myagricensus.gov.my> untuk maklumat lanjut. Tema adalah "Banci Pertanian, Kunci Kemajuan Pertanian".

Kerajaan Malaysia telah mengisytiharkan Hari Statistik Negara (MyStats Day) pada 20 Oktober setiap tahun. Tema sambutan MyStats Day adalah "Statistik Nadi Kehidupan".

Pangkalan Data Utama (PADU) telah dilancarkan pada 2 Januari 2024. PADU mengandungi profil individu dan isi rumah meliputi warganegara dan pemastautin tetap di Malaysia. Matlamat utama PADU untuk memastikan rakyat Malaysia tidak tercicir daripada setiap inisiatif berpaksikan rakyat yang dilaksanakan oleh Kerajaan. Dimohon kerjasama untuk mendaftar dan mengemaskini PADU sebelum atau pada 31 Mac 2024. Sila layari <https://www.padu.gov.my> bagi maklumat lanjut berkaitan PADU atau menghubungi talian *hotline* berikut:

- i) Jabatan Perangkaan Malaysia : 1-800-88-7720 /1-800-88-7721
- ii) Pertanyaan secara online melalui SISPA: <https://padu.spab.gov.my>.

## **Announcement**

*The Department of Statistics Malaysia (DOSM) has launched OpenDOSM NextGen as a medium that provides a catalog of data and visualisations to facilitate users' analysis of various data and can be accessed through <https://open.dosm.gov.my>.*

*DOSM will conduct the Agricultural Census in 2024. Please visit <https://www.myagricensus.gov.my> for more information. The theme is "Agriculture Census, Key to Agricultural Development".*

*The Government of Malaysia has declared National Statistics Day (MyStats Day) on October 20th each year. MyStats Day theme is "Statistics is the Essence of Life".*

*The Central Database (PADU) was launched on 2 January 2024. PADU contains individual and household profiles covering citizens and permanent residents of Malaysia. The main goal of PADU is to ensure that Malaysians are not left behind from citizen centric initiatives implemented by the Government. Your kind cooperation is requested to register and update PADU by 31 March 2024. Please visit <https://www.padu.gov.my> for more information related to PADU or contact the following hotlines:*

- i) Department of Statistics Malaysia : 1-800-88-7720 /1-800-88-7721*
- ii) Online Enquiries through SISPA: <https://padu.spab.gov.my>.*

**JABATAN PERANGKAAN MALAYSIA**  
**DEPARTMENT OF STATISTICS MALAYSIA**

Diterbitkan dan dicetak oleh / *Published and printed by:*

**Jabatan Perangkaan Malaysia**  
***Department of Statistics, Malaysia***

Blok C6, Kompleks C,  
Pusat Pentadbiran Kerajaan Persekutuan  
62514 Putrajaya,

**MALAYSIA**

Tel. : 03-8885 7000  
Faks : 03-8888 9248  
Portal : <https://www.dosm.gov.my>  
Facebook / X / Instagram: StatsMalaysia  
E-mel / *E-mail* : info@dosm.gov.my (pertanyaan umum / *general enquiries*)  
data@dosm.gov.my (pertanyaan & permintaan data / *data request & enquiries*)

Harga / *Price* : RM5.00

Diterbitkan pada Januari 2024 / *Published on January 2024*

**Hakcipta terpelihara / *All rights reserved.***

Tiada bahagian daripada terbitan ini boleh diterbitkan semula, disimpan untuk pengeluaran atau ditukar dalam apa-apa bentuk atau alat apa jua pun kecuali setelah mendapat kebenaran daripada Jabatan Perangkaan Malaysia.

Pengguna yang mengeluarkan sebarang maklumat dari terbitan ini sama ada yang asal atau diolah semula hendaklah meletakkan kenyataan berikut:

“Sumber: Jabatan Perangkaan Malaysia”.

*No part of this publication may be reproduced or distributed in any form or by any means or stored in data base without the prior written permission from Department of Statistics, Malaysia.*

*Users reproducing content of this publication with or without adaptation should quote the following:*

“Source: Department of Statistics, Malaysia.”

**ISSN 1675 - 4344**

## KANDUNGAN

Contents

	<i>Muka Surat</i>
	<i>Page</i>
<b>Kata Pengantar</b> <i>Preface</i>	i - ii
<b>Ringkasan Penemuan</b> <i>Summary of Findings</i>	iii - xv
<b>Carta &amp; Jadual Statistik</b> <i>Statistical Tables &amp; Charts</i>	
1.1 <b>Carta Indeks Nilai Seunit Eksport dan Import</b> <i>Export and Import Unit Value Indices Charts</i>	1
1.2 <b>Carta Peratus Perubahan Bulan ke Bulan Indeks Nilai Seunit Eksport dan Import</b> <i>Month-on-month Percentage Change in Export and Import Unit Value Indices Charts</i>	1
1.3 <b>Carta Peratus Perubahan Tahun ke Tahun Indeks Nilai Seunit Eksport dan Import</b> <i>Year-on-year Percentage Change in Export and Import Unit Value Indices Charts</i>	2
2.1 <b>Carta Indeks Volum Eksport dan Import</b> <i>Export and Import Volume Indices Charts</i>	2
2.2 <b>Carta Peratus Perubahan Bulan ke Bulan Indeks Volum Eksport dan Import</b> <i>Month-on-month Percentage Change in Export and Import Volume Indices Charts</i>	3
2.3 <b>Carta Peratus Perubahan Tahun ke Tahun Indeks Volum Eksport dan Import</b> <i>Year-on-year Percentage Change in Export and Import Volume Indices Charts</i>	3
3.1 <b>Carta Indeks Terma Perdagangan</b> <i>Terms of Trade Index Charts</i>	4
3.2 <b>Carta Peratus Perubahan Bulan ke Bulan Indeks Terma Perdagangan</b> <i>Month-on-month Percentage Change in Terms of Trade Index Charts</i>	4
3.3 <b>Carta Peratus Perubahan Tahun ke Tahun Indeks Terma Perdagangan</b> <i>Year-on-year Percentage Change in Terms of Trade Index Charts</i>	5
1A <b>Jadual Indeks Nilai Seunit bagi Eksport (2010=100) Mengikut Seksyen Barangan (S.I.T.C.)</b> <i>Export Unit Value Index (2010=100) by Commodity Sections (S.I.T.C.) Tables</i>	6
1B <b>Jadual Peratus Perubahan Bulan ke Bulan Indeks Nilai Seunit bagi Eksport (2010=100) Mengikut Seksyen Barangan (S.I.T.C.)</b> <i>Month-on-month Percentage Change Export Unit Value Index (2010=100) by Commodity Sections (S.I.T.C.) Tables</i>	7
1C <b>Jadual Peratus Perubahan Tahun ke Tahun Indeks Nilai Seunit bagi Eksport (2010=100) Mengikut Seksyen Barangan (S.I.T.C.)</b> <i>Year-on-year Percentage Change Export Unit Value Index (2010=100) by Commodity Sections (S.I.T.C.) Tables</i>	8
2A <b>Jadual Indeks Volum bagi Eksport (2010=100) Mengikut Seksyen Barangan (S.I.T.C.)</b> <i>Export Volume Index (2010=100) by Commodity Sections (S.I.T.C.) Tables</i>	9
2B <b>Jadual Peratus Perubahan Bulan ke Bulan Indeks Volum bagi Eksport (2010=100) Mengikut Seksyen Barangan (S.I.T.C.)</b> <i>Month-on-month Percentage Change Export Volume Index (2010=100) by Commodity Sections (S.I.T.C.) Tables</i>	10

<b>2C</b>	<b>Jadual Peratus Perubahan Tahun ke Tahun Indeks Volum bagi Eksport (2010=100) Mengikut Seksyen Barangan (S.I.T.C.)</b> <i>Year-on-year Percentage Change Export Volume Index (2010=100) by Commodity Sections (S.I.T.C.) Tables</i>	11
<b>3A</b>	<b>Jadual Indeks Nilai Seunit bagi Import (2010=100) Mengikut Seksyen Barangan (S.I.T.C.)</b> <i>Import Unit Value Index (2010=100) by Commodity Sections (S.I.T.C.) Tables</i>	12
<b>3B</b>	<b>Jadual Peratus Perubahan Bulan ke Bulan Indeks Nilai Seunit bagi Import (2010=100) Mengikut Seksyen Barangan (S.I.T.C.)</b> <i>Month-on-month Percentage Change Import Unit Value Index (2010=100) by Commodity Sections (S.I.T.C.) Tables</i>	13
<b>3C</b>	<b>Jadual Peratus Perubahan Tahun ke Tahun Indeks Nilai Seunit bagi Import (2010=100) Mengikut Seksyen Barangan (S.I.T.C.)</b> <i>Year-on-year Percentage Change Import Unit Value Index (2010=100) by Commodity Sections (S.I.T.C.) Tables</i>	14
<b>4A</b>	<b>Jadual Indeks Volum bagi Import (2010=100) Mengikut Seksyen Barangan (S.I.T.C.)</b> <i>Import Volume Index (2010=100) by Commodity Sections (S.I.T.C.) Tables</i>	15
<b>4B</b>	<b>Jadual Peratus Perubahan Bulan ke Bulan Indeks Volum bagi Import (2010=100) Mengikut Seksyen Barangan (S.I.T.C.)</b> <i>Month-on-month Percentage Change Import Volume Index (2010=100) by Commodity Sections (S.I.T.C.) Tables</i>	16
<b>4C</b>	<b>Jadual Peratus Perubahan Tahun ke Tahun Indeks Volum bagi Import (2010=100) Mengikut Seksyen Barangan (S.I.T.C.)</b> <i>Year-on-year Percentage Change Import Volume Index (2010=100) by Commodity Sections (S.I.T.C.) Tables</i>	17
<b>5A</b>	<b>Jadual Terma Perdagangan (2010=100) Mengikut Seksyen Barangan (S.I.T.C.)</b> <i>Terms of Trade (2010=100) by Commodity Sections (S.I.T.C.) Tables</i>	18
<b>5B</b>	<b>Jadual Peratus Perubahan Bulan ke Bulan Terma Perdagangan (2010=100) Mengikut Seksyen Barangan (S.I.T.C.)</b> <i>Month-on-month Percentage Change Terms of Trade (2010=100) by Commodity Sections (S.I.T.C.) Tables</i>	19
<b>5C</b>	<b>Jadual Peratus Perubahan Tahun ke Tahun Terma Perdagangan (2010=100) Mengikut Seksyen Barangan (S.I.T.C.)</b> <i>Year-on-year Percentage Change Terms of Trade (2010=100) by Commodity Sections (S.I.T.C.) Tables</i>	20
<b>6</b>	<b>Jadual Indeks Volum Eksport – Asal &amp; Pelarasan Musim (2010=100)</b> <i>Export unit Volume Index – Actual &amp; Seasonally Adjusted (2010=100) Tables</i>	21
<b>7</b>	<b>Jadual Indeks Volum Import – Asal &amp; Pelarasan Musim (2010=100)</b> <i>Import unit Volume Index – Actual &amp; Seasonally Adjusted (2010=100) Tables</i>	22
<b>Nota Teknikal</b> <i>Technical Notes</i>		23-31
<b>Lampiran</b> <i>Appendix</i>		32-33

## KATA PENGANTAR

Penerbitan Indeks Perdagangan Luar Negeri (IPLN) Malaysia merupakan penerbitan bulanan yang memaparkan Indeks Nilai Seunit, Indeks Volum dan Terma Perdagangan meliputi 10 seksyen utama barangan selaras dengan klasifikasi *United Nations "Standard International Trade Classification, Revision 4 (S.I.T.C. Rev 4)"*. IPLN disusun berdasarkan data perdagangan luar negeri Malaysia yang sebahagian besarnya diproses daripada borang pengikraran kastam.

IPLN telah disusun buat pertama kalinya dengan menggunakan tahun 1970 sebagai tahun asas (1970=100), seterusnya diasaskan semula kepada tahun 1999, 2005 dan 2010. Bermula bulan rujukan Januari 2018, penyusunan IPLN masih mengekalkan 2010 sebagai "tempoh rujukan indeks" dengan 2013 sebagai "tempoh rujukan wajaran". Bermula bulan rujukan Januari 2019, IPLN dikemaskini sekali lagi menggunakan tahun 2015 sebagai "tempoh rujukan wajaran" dan masih mengekalkan tahun asas yang sama 2010=100.

Objektif utama IPLN adalah untuk mengukur perubahan paras nilai seunit serta volum eksport dan import Malaysia.

Ringkasan penemuan utama dan jadual terperinci indeks di peringkat seksyen (S.I.T.C. 1 digit) dipaparkan pada bahagian pertama dan kedua penerbitan. Seterusnya, nota teknikal berkaitan dengan objektif, skop dan liputan, konsep dan definisi serta kaedah pengiraan yang digunakan dimuatkan pada bahagian terakhir penerbitan bagi meningkatkan kefahaman berkenaan dengan IPLN.

Jabatan Perangkaan Malaysia merakamkan setinggi-tinggi penghargaan kepada semua pihak yang telah menyumbang secara langsung dan tidak langsung dalam merealisasikan penerbitan ini. Setiap maklum balas dan cadangan daripada semua pihak untuk penambahbaikan penerbitan ini pada masa hadapan amat dihargai.

**Dato' Sri Dr. Mohd Uzir Mahidin**

Ketua Perangkawan Malaysia

Januari 2024

## **PREFACE**

*The publication of External Trade Indices (ETI), Malaysia is a monthly publication which presents Unit Value Index, Volume Index and Terms of Trade covering 10 main sections of goods in line with classification of the United Nations "Standard International Trade Classification, Revision 4 (S.I.T.C. Rev 4)". ETI is compiled based on Malaysia external trade data which is in turn mainly processed from custom declaration forms.*

*The ETI was compiled for the first time using 1970 as the base year (1970=100), subsequently it has been rebased to 1999, 2005 and 2010. Commencing in reference month of January 2018, the compilation of ETI maintained 2010 as the "index reference period" with 2013 as "weight reference period". Effective with release of publication for January 2019, the ETI again updated using year 2015 as "weight reference period" while maintaining the same base year 2010=100.*

*The main objective of ETI is to measure the changes in the levels of unit values and volumes of Malaysia's merchandise imports and exports.*

*The summary of the main findings and the detailed index tables at sections (1-digit S.I.T.C) level are presented in the first and second part of this publication. Meanwhile, the technical notes on objectives, scope and coverage, concepts and definitions and the calculation techniques used are included in the final part of this publication to enhance understanding of the ETI.*

*The Department of Statistics Malaysia (DOSM) gratefully acknowledges the cooperation rendered by all parties who have contributed directly and indirectly in realising this publication. Every feedback and suggestions towards improving the future publication is highly appreciated.*

**Dato' Sri Dr. Mohd Uzir Mahidin**  
Chief Statistician Malaysia  
January 2024



# **1. RINGKASAN PENEMUAN**

## *SUMMARY OF FINDINGS*



KEMENTERIAN EKONOMI  
JABATAN PERANGKAAAN MALAYSIA



# INDEKS PERDAGANGAN LUAR NEGERI, DISEMBER 2023

## External Trade Indices, December 2023

### EKSPORT Exports

Nilai (RM Billion)  
Value (RM Billion)

121.7

NOV '23  
Nov '23



NOV '23  
Nov '23

109.5

### IMPORT Imports

Nilai (RM Billion)  
Value (RM Billion)

▼ 2.7%

118.5

DIS '23  
Dec '23

DIS '23  
Dec '23

106.7

▼ 2.6%



▼ 14.8%

Minyak Galian  
Mineral Fuels



▼ 3.6%

Minyak & Lemak Binatang  
& Sayur-sayuran  
Animal & Vegetable Oils & Fats



▼ 4.5%

Minyak Galian  
Mineral Fuels



▼ 6.3%

Bahan Kimia  
Chemicals



▼ 8.0%

Makanan  
Food



▼ 2.4%

Minyak Galian  
Mineral Fuels



▼ 0.5%

Alat Jentera & Kelengkapan  
Pengangkutan  
Machinery & Transport  
Equipment



▼ 3.8%

Alat Jentera &  
Kelengkapan Pengangkutan  
Machinery & Transport Equipment



▼ 3.9%

Bahan Kimia  
Chemicals



▼ 0.5%

Barang-barang Keluaran  
Kilang  
Manufactured Goods



▼ 0.5%

Bahan Kimia  
Chemicals



▼ 1.2%

Pelbagai Barang Keluaran Kilang  
Miscellaneous Manufactured Articles

Indeks Volum  
Volume Index

▼ 1.8%

▼ 0.9%

▼ 1.0%

Indeks Nilai Seunit  
Unit Value Index

Indeks Volum  
Volume Index

▼ 1.6%

### TERMA PERDAGANGAN Terms of Trade

▲ 0.1%



Minyak Galian  
Mineral Fuels

▲ 2.2%



Makanan  
Food

▲ 0.9%



Bahan Mentah Tidak Boleh  
Dimakan  
Inedible Crude Materials

▲ 0.8%

## INDEKS PERDAGANGAN LUAR NEGERI DISEMBER 2023

### PRESTASI PERDAGANGAN MALAYSIA

Jumlah dagangan Malaysia mencatatkan nilai RM225.1 bilion pada Disember 2023 berbanding RM235.2 bilion pada bulan yang sama tahun sebelumnya, dengan kemerosotan 4.3 peratus atau RM10.1 bilion. Nilai eksport mengalami penurunan dua digit pada 10.0 peratus, manakala nilai import pula merekodkan peningkatan 2.9 peratus, tahun ke tahun. Pada masa yang sama, lebih dagangan merosot 57.8 peratus untuk mencapai nilai RM11.8 bilion. Berbanding November 2023, eksport, import, jumlah dagangan dan lebih dagangan mencatatkan penurunan dengan masing-masing 2.7 peratus, 2.6 peratus, 2.6 peratus dan 3.6 peratus.

Eksport, jumlah dagangan dan lebih dagangan bagi suku tahun keempat (ST4) 2023 mencatatkan penurunan berbanding ST4 tahun 2022. Eksport menurun 6.9 peratus kepada RM366.3 bilion dan import dengan nilai RM329.3 billion, meningkat 1.3 peratus. Oleh itu, jumlah dagangan jatuh 3.2 peratus kepada RM695.6 bilion. Sebaliknya, lebih dagangan menurun 45.9 peratus daripada RM68.2 bilion kepada RM36.9 bilion.

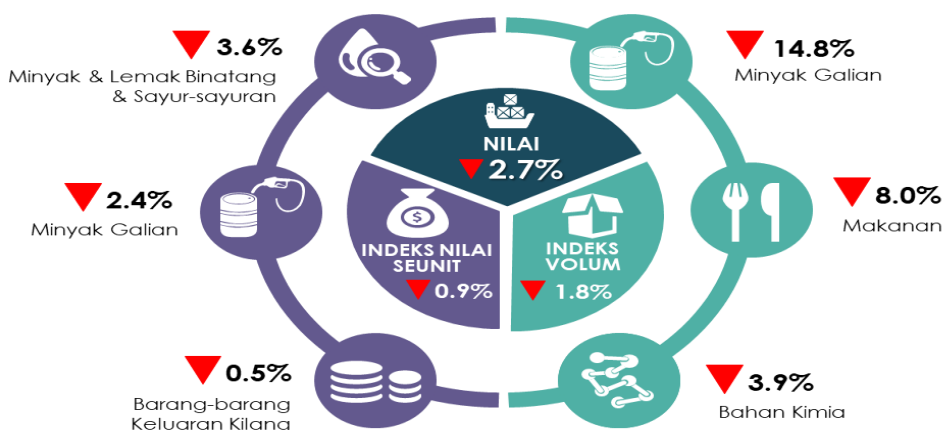
Eksport, import, jumlah dagangan dan lebih dagangan merekodkan prestasi negatif bagi tempoh Januari hingga Disember 2023 berbanding tempoh yang sama tahun sebelumnya. Prestasi perdagangan barangan yang menggalakkan pada 2022 mempengaruhi pertumbuhan tahunan pada tahun ini. Eksport, import, jumlah dagangan dan lebih dagangan masing-masing merosot 8.0 peratus, 6.4 peratus, 7.3 peratus dan 16.4 peratus.

### PERBANDINGAN BULAN KE BULAN

#### EKSPORT

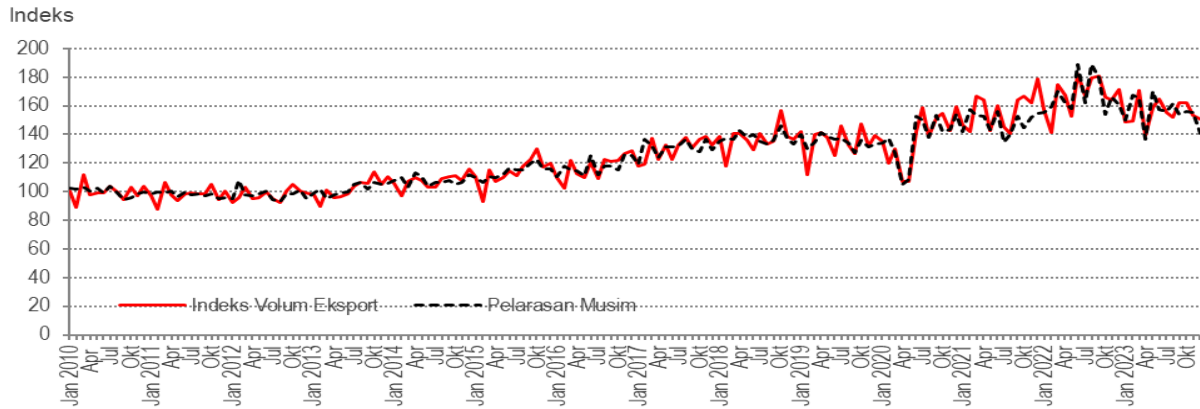
Perbandingan bulan ke bulan menunjukkan **indeks nilai seunit eksport** jatuh 0.9 peratus pada Disember 2023. Kejatuhan ini disumbangkan oleh indeks minyak & lemak binatang & sayur-sayuran (-3.6%), minyak galian (-2.4%) dan barang-barang keluaran kilang (-0.5%).

Pada masa yang sama, **indeks volum eksport** susut 1.8 peratus selaras dengan penyusutan indeks minyak galian (-14.8%), makanan (-8.0%) dan bahan kimia (-3.9%). **Indeks volum eksport pelarasan bermusim** merosot 9.3 peratus daripada 155.4 mata kepada 140.9 mata (Carta 1).



Paparan 1: Prestasi Nilai Eksport, Indeks Nilai Seunit dan Indeks Volum serta Penyumbang Utama Indeks Nilai Seunit dan Indeks Volum Eksport

## PERBANDINGAN BULAN KE BULAN

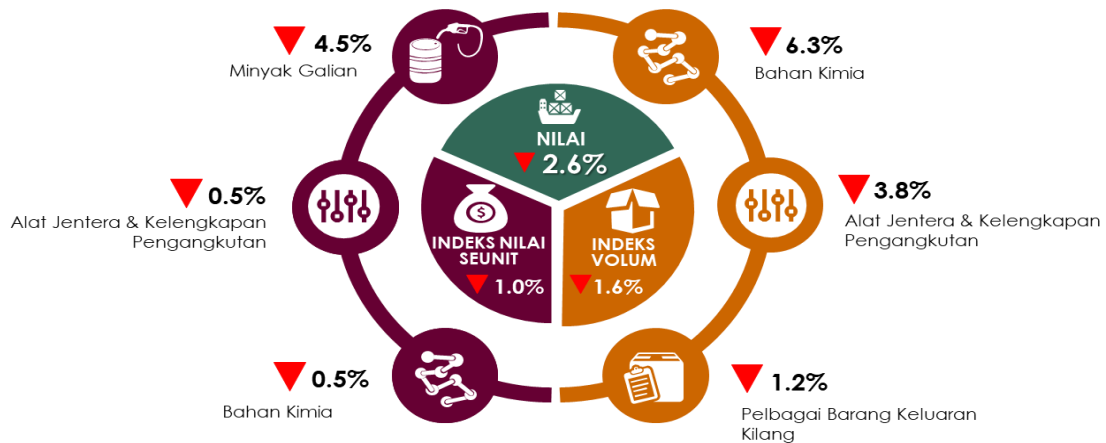


**Carta 1: Indeks Volum Eksport - Asal & Pelarasan Musim**

### IMPORT

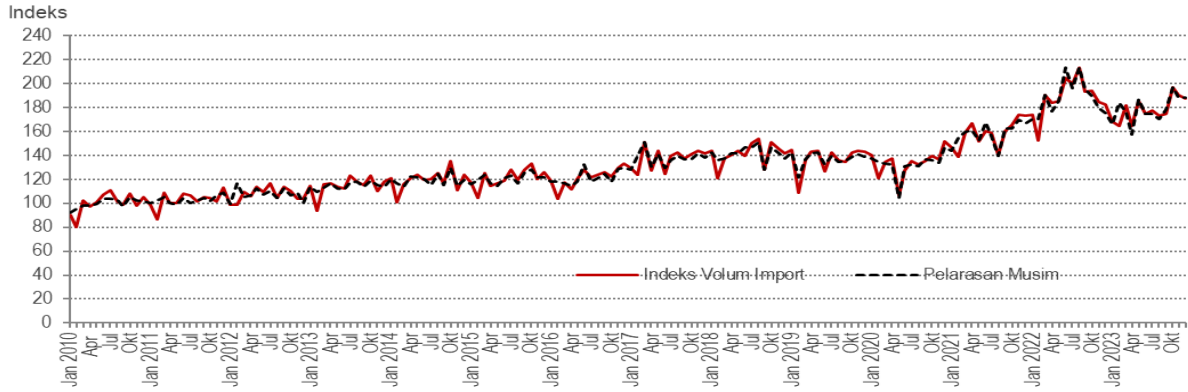
**Indeks nilai seunit import** menurun 1.0 peratus pada Disember 2023. Penurunan ini disumbangkan oleh penurunan indeks minyak galian (-4.5%), alat jentera & kelengkapan pengangkutan (-0.5%) dan bahan kimia (-0.5%).

**Indeks volum import** turut jatuh 1.6 peratus pada Disember 2023 berbanding bulan sebelum. Kejatuhan ini disumbangkan oleh indeks bahan kimia (-6.3%), alat jentera & kelengkapan pengangkutan (-3.8%) dan pelbagai barang keluaran kilang (-1.2%). **Indeks volum import pelarasan bermusim** naik 0.2 peratus daripada 188.1 mata kepada 188.4 mata (**Carta 2**).



**Paparan 2: Prestasi Nilai Import, Indeks Nilai Seunit dan Indeks Volum serta Penyumbang Utama Indeks Nilai Seunit dan Indeks Volum Import**

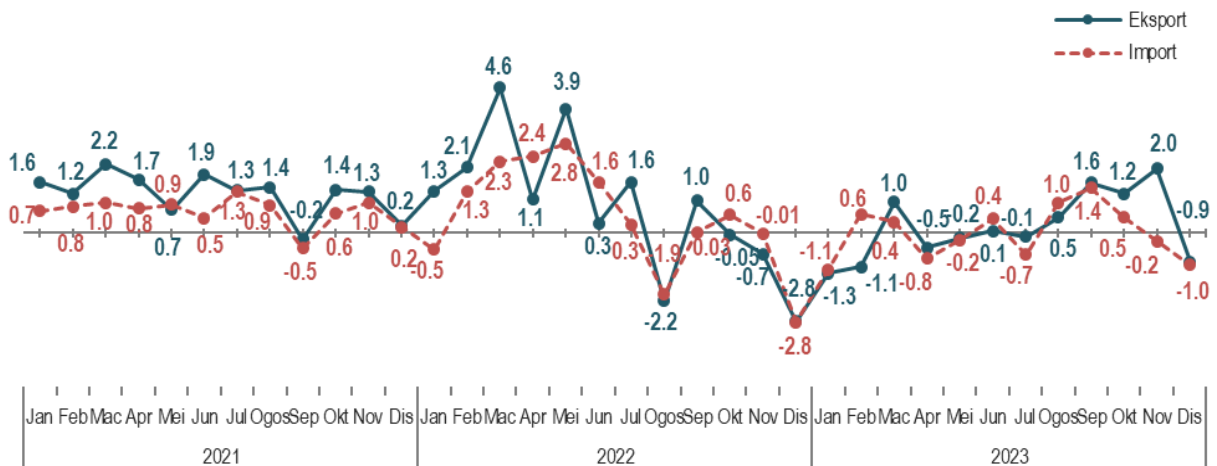
## PERBANDINGAN BULAN KE BULAN



**Carta 2: Indeks Volum Import - Asal & Pelarasan Musim**

### SIRI MASA INDEKS NILAI SEUNIT EKSPORT & IMPORT

Perbandingan bulan ke bulan, **indeks nilai seunit eksport** kembali menunjukkan trend penurunan setelah empat bulan berturut-turut merekodkan kenaikan. Sementara itu, **indeks nilai seunit import** terus menunjukkan pertumbuhan negatif pada Disember 2023 dengan penurunan yang lebih ketara.



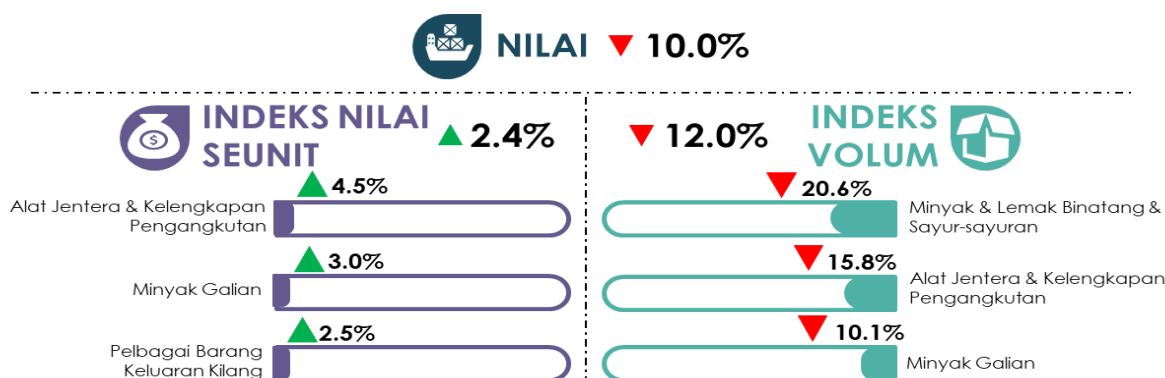
**Carta 3: Peratus Perubahan Bulan ke Bulan bagi Indeks Nilai Seunit Eksport & Import Januari 2021 – Disember 2023**

## PERBANDINGAN TAHUN KE TAHUN

### EKSPORT

**Indeks nilai seunit eksport** menunjukkan kenaikan 2.4 peratus tahun ke tahun pada Disember 2023. Peningkatan ini disumbangkan oleh indeks alat jentera & kelengkapan pengangkutan (+4.5%), minyak galian (+3.0%) dan pelbagai barang keluaran kilang (+2.5%).

Manakala, **indeks volum eksport** merosot 12.0 peratus pada Disember 2023. Kemerosotan ini disumbangkan oleh indeks minyak & lemak binatang & sayur-sayuran (-20.6%), alat jentera & kelengkapan pengangkutan (-15.8%) dan minyak galian (-10.1%).

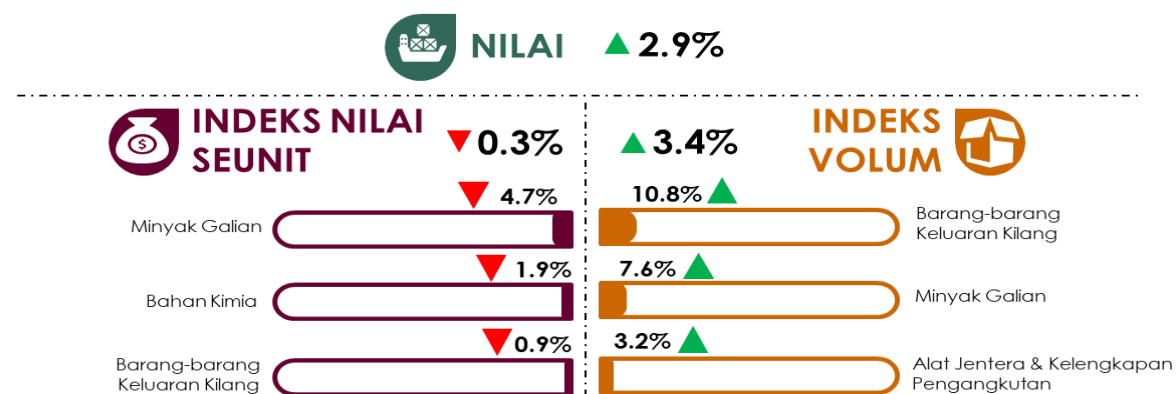


**Paparan 3: Prestasi Nilai Eksport, Indeks Nilai Seunit dan Indeks Volum serta Penyumbang Utama Indeks Nilai Seunit dan Indeks Volum Eksport**

### IMPORT

**Indeks volum import** menokok 3.4 peratus pada Disember 2023 berbanding bulan yang sama tahun lalu kepada 188.3 mata. Pertumbuhan positif **indeks volum import** didorong oleh kenaikan indeks barang-barang keluaran kilang (+10.8%), minyak galian (+7.6%) dan alat jentera & kelengkapan pengangkutan (+3.2%).

Sementara itu, **indeks nilai seunit import** berkurang 0.3 peratus kepada 129.1 mata pada Disember 2023 berbanding bulan yang sama tahun sebelumnya. Penurunan ini disumbangkan oleh indeks minyak galian (-4.7%), bahan kimia (-1.9%) dan barang-barang keluaran kilang (-0.9%)

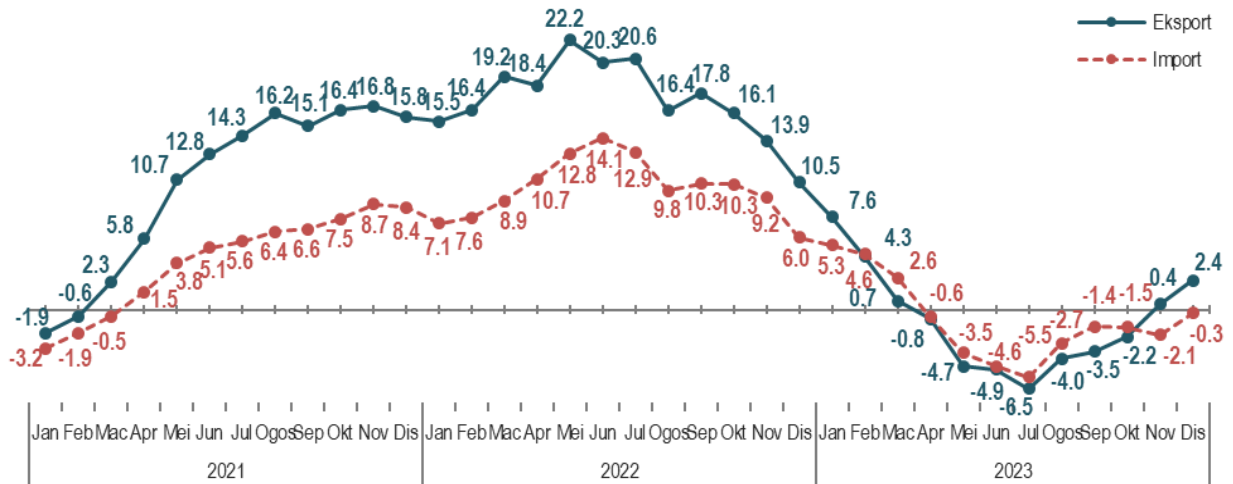


**Paparan 4: Prestasi Nilai Import, Indeks Nilai Seunit dan Indeks Volum serta Penyumbang Utama Indeks Nilai Seunit dan Indeks Volum Import**

## PERBANDINGAN TAHUN KE TAHUN

### SIRI MASA INDEKS NILAI SEUNIT EKSPORT & IMPORT

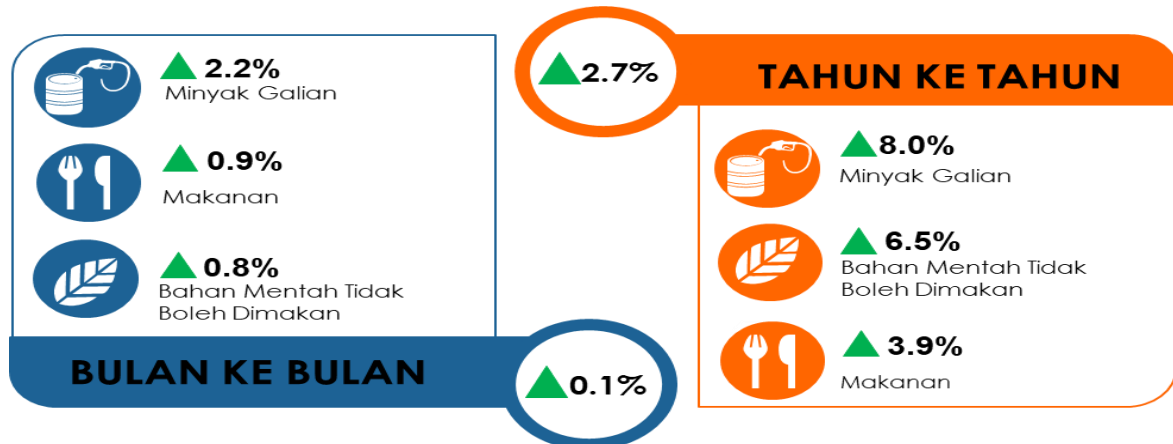
**Indeks nilai seunit eksport** terus menunjukkan pertumbuhan positif pada Disember 2023, manakala **indeks nilai seunit import** kekal berada dalam trajektori negatif dengan namun pada kadar yang kecil.



**Carta 4: Peratus Perubahan Tahun ke Tahun bagi Indeks Nilai Seunit Eksport & Import Januari 2021 – Disember 2023**

## TERMA PERDAGANGAN

Terma perdagangan Malaysia meningkat 0.1 peratus kepada 114.6 mata pada Disember 2023 berbanding November 2023. Peningkatan ini didorong oleh kenaikan indeks minyak galian (+2.2%), makanan (+0.9%) dan bahan mentah tidak boleh dimakan (+0.8%).

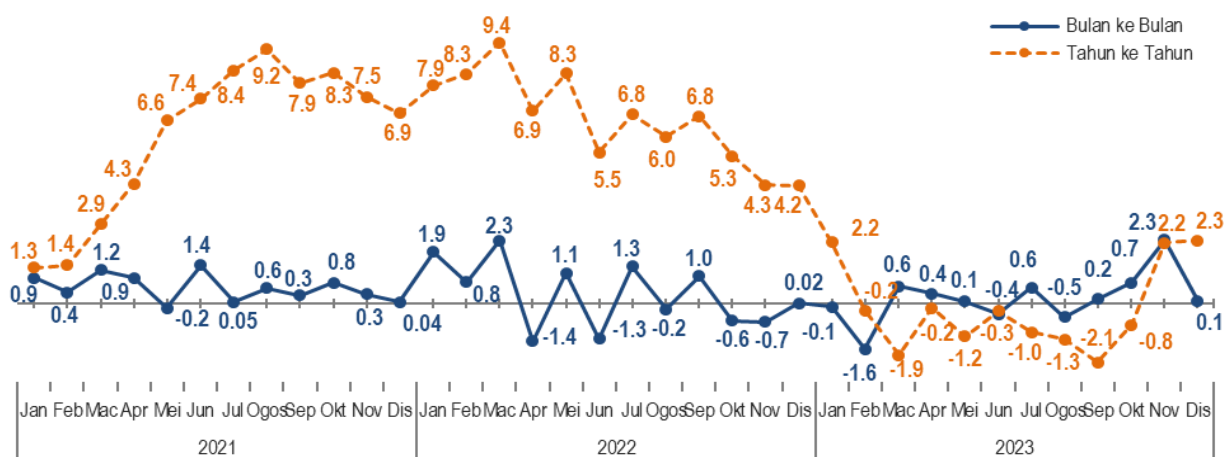


Paparan 5: Penyumbang Utama Terma Perdagangan Mengikut Bulan ke Bulan dan Tahun ke Tahun

Beraskan tahun ke tahun, terma perdagangan Malaysia turut menokok 2.7 peratus daripada 111.6 mata pada Disember tahun lalu. Kenaikan ini disumbangkan oleh peningkatan indeks minyak galian (+8.0%), bahan mentah tidak boleh dimakan (+6.5%) dan makanan (+3.9%).

### SIRI MASA TERMA PERDAGANGAN

Terma perdagangan Malaysia pada Disember 2023 mengekalkan pertumbuhan tahunan positif sejak Mac 2023. Walau bagaimanapun, prestasi bulan ke bulan terma perdagangan menunjukkan prestasi menurun pada Disember 2023. Di sebalik prestasi bulanan yang tidak menentu, terma perdagangan kekal pada paras melebihi 100.0 mata sejak Disember 2020.



Carta 5: Terma Perdagangan, Januari 2021 – Disember 2023

**EXTERNAL TRADE INDICES  
DECEMBER 2023**

**MALAYSIA'S TRADE PERFORMANCE**

Malaysia's total trade registered a value of RM225.1 billion in December 2023 as compared to RM235.2 billion in the same month of preceding year, with a contraction of 4.3 per cent or RM10.1 billion. Exports recorded a negative double-digit growth, weakened by 10.0 per cent, while imports recorded an increase of 2.9 per cent, year-on-year (y-o-y). Trade surplus declined by 57.8 per cent to post a value of RM11.8 billion. In comparison to November 2023, exports, imports, total trade and trade surplus declined by 2.7 per cent, 2.6 per cent, 2.6 per cent and 3.6 per cent, respectively.

Exports, total trade and trade surplus for fourth quarter (Q4) of 2023 posted decreases as compared to the Q4 of 2022. Exports declined by 6.9 per cent to RM366.3 billion and imports with value of RM329.3 billion, expanded by 1.3 per cent. Consequently, total trade fell by 3.2 per cent to RM695.6 billion. On the other note, trade surplus decreased by 45.9 per cent from RM68.2 billion to RM36.9 billion.

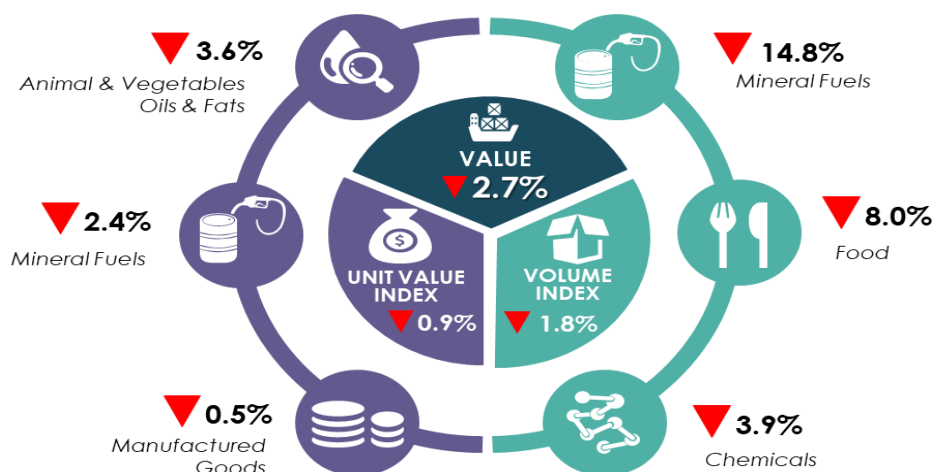
Exports, imports, total trade and trade surplus posted a negative growth for the period of January to December 2023 as compared to the same period of the preceding year. The favourable performance of merchandise trade in 2022 influenced the annual growth for this year. Exports, imports, total trade and trade surplus flatten by 8.0 per cent, 6.4 per cent, 7.3 per cent and 16.4 per cent, respectively.

**MONTH-ON-MONTH COMPARISON**

**EXPORTS**

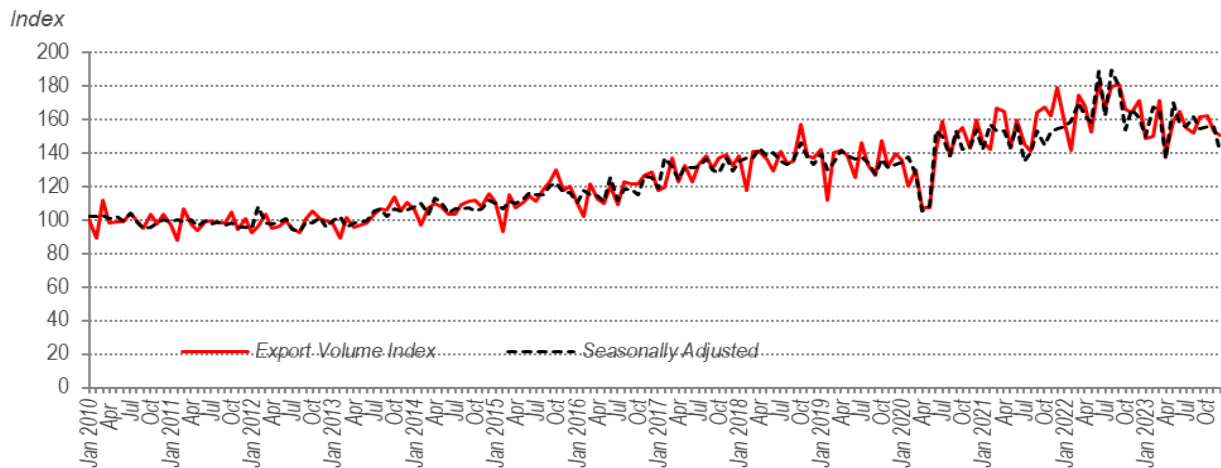
The **export unit value index** fell by 0.9 per cent in December 2023 on a month-on-month (m-o-m) comparison. The decrement was led by the index of animal & vegetable oils & fats (-3.6%), mineral fuels (-2.4%) and manufactured goods (-0.5%).

At the same time, **export volume index** went down by 1.8 per cent in the same month which was attributed from the decline in the index of mineral fuels (-14.8%), food (-8.0%) and chemicals (-3.9%). **The seasonally adjusted export volume index** declined by 9.3 per cent from 155.4 points to 140.9 points (Chart 1).



**Exhibit 1: Export Value, Unit Value Index and Volume Index Performances and Main Contributors of Export Unit Value and Volume Indices**

## MONTH-ON-MONTH COMPARISON

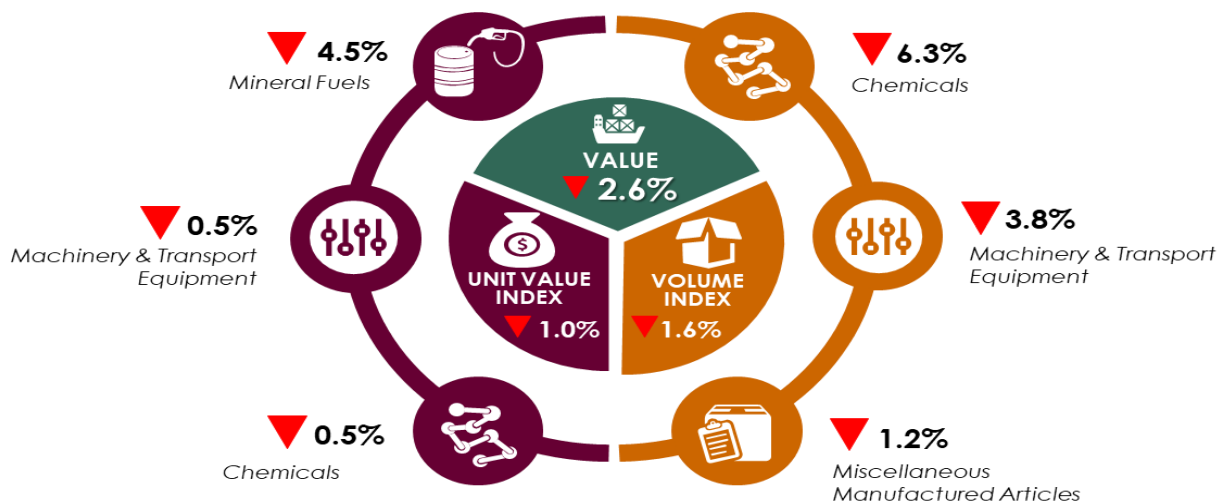


**Chart 1: Export Volume Indices - Actual & Seasonally Adjusted**

### IMPORTS

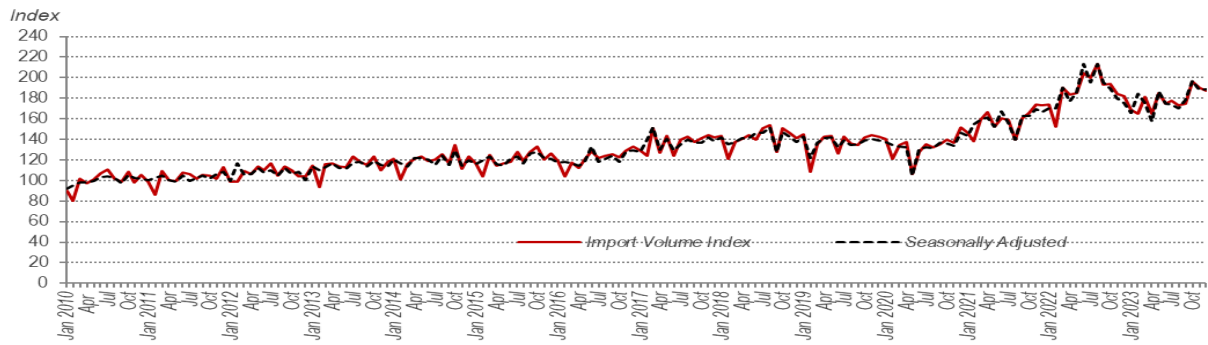
**The import unit value index** shrank by 1.0 per cent in December 2023, contributed by the decrease in the index of mineral fuels (-4.5%), machinery & transport equipment (-0.5%) and chemicals (-0.5%).

**The import volume index** also dropped by 1.6 per cent in December 2023 as compared to the previous month. The decrement was attributed to the contraction in the index of chemicals (-6.3%), machinery & transport equipment (-3.8%) and miscellaneous manufactured articles (-1.2%). **The seasonally adjusted import volume index** edged up by 0.2 per cent from 188.1 points to 188.4 points (**Chart 2**).



**Exhibit 2: Import Value, Unit Value Index and Volume Index Performances and Main Contributors of Import Unit Value and Volume Indices**

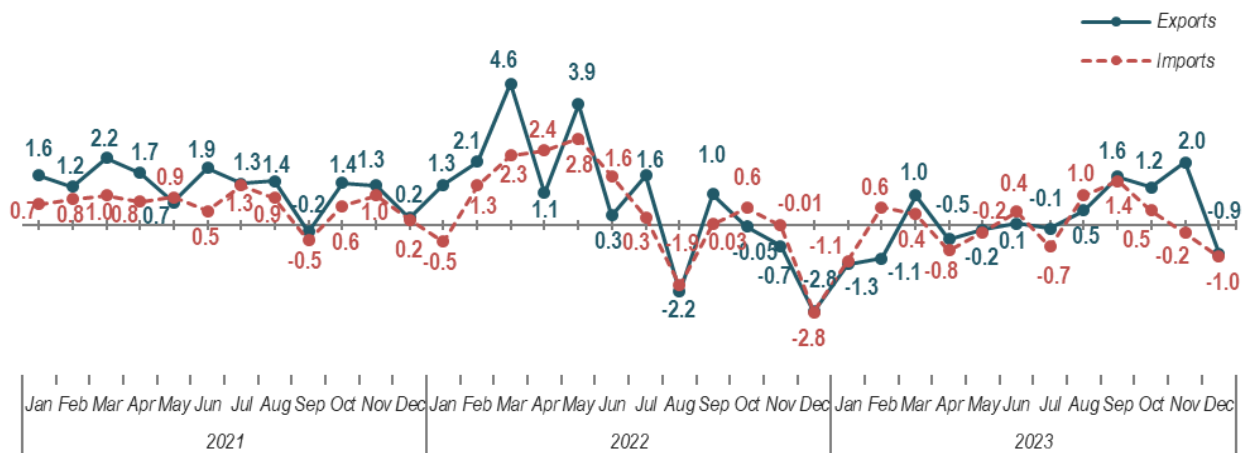
## MONTH-ON-MONTH COMPARISON



**Chart 2: Import Volume Indices - Actual & Seasonally Adjusted**

### TIME-SERIES OF EXPORT & IMPORT UNIT VALUE INDICES

On a monthly basis, the performance of the **export unit value index** returned to a negative trend after recording an increase for four months in a row. Meanwhile **import unit value index** continued to show a decreasing in December 2023 with a significant rate.



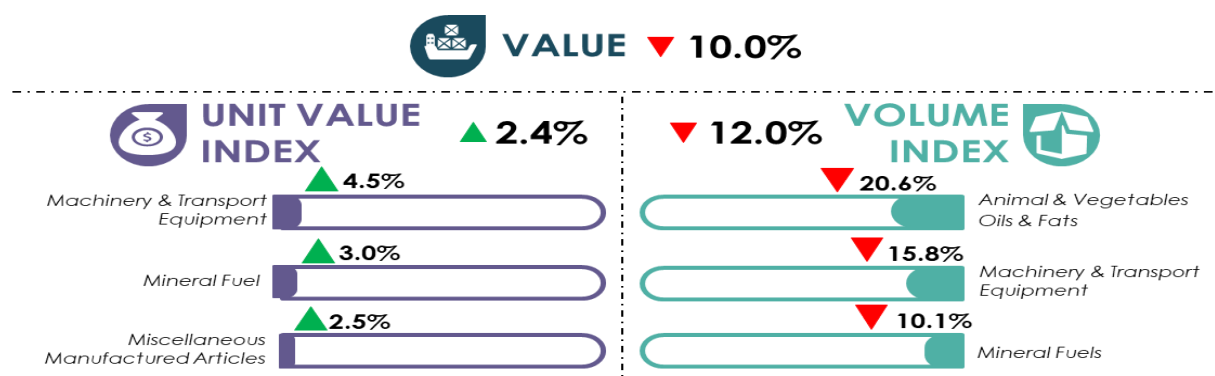
**Chart 3: Month-on-Month Percentage Change of Export & Import Unit Value Indices  
January 2021 – December 2023**

## YEAR-ON-YEAR COMPARISON

### EXPORTS

The **export unit value index** showed an increase of 2.4 per cent y-o-y in December 2023. The increment was led by the index of machinery & transport equipment (+4.5%), mineral fuels (+3.0%) and miscellaneous manufactured articles (+2.5%).

Meanwhile, the **export volume index** fell by 12.0 per cent in December 2023. The deterioration was attributed from the index of animal & vegetable oils & fats (-20.6%), machinery & transport equipment (-15.8%) and mineral fuels (-10.1%).

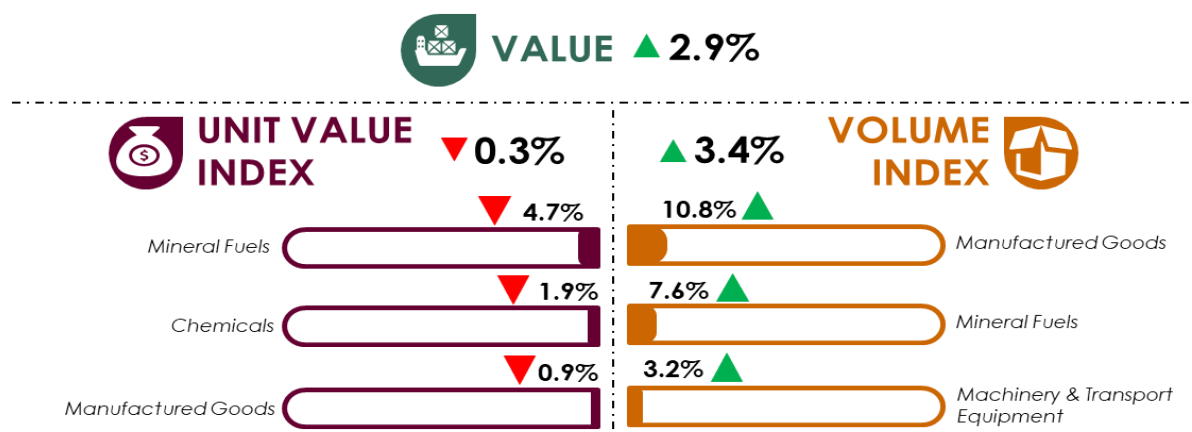


**Exhibit 3: Export Value, Unit Value Index and Volume Index Performances and Main Contributors of Export Unit Value and Volume Indices**

### IMPORTS

The **import volume index** rose by 3.4 per cent in December 2023 as compared to the same month of the previous year to 188.3 points. The positive growth in the **import volume index** was driven by the increase in the index of manufactured goods (+10.8%), mineral fuels (+7.6%) and machinery & transport equipment (+3.2%).

Meanwhile, **import unit value index** decreased by 0.3 per cent to 129.1 points in December 2023 as compared to the same month of the previous year. The decrement was contributed by the index of mineral fuels (-4.7%), chemicals (-1.9%) and manufactured goods (-0.9%).

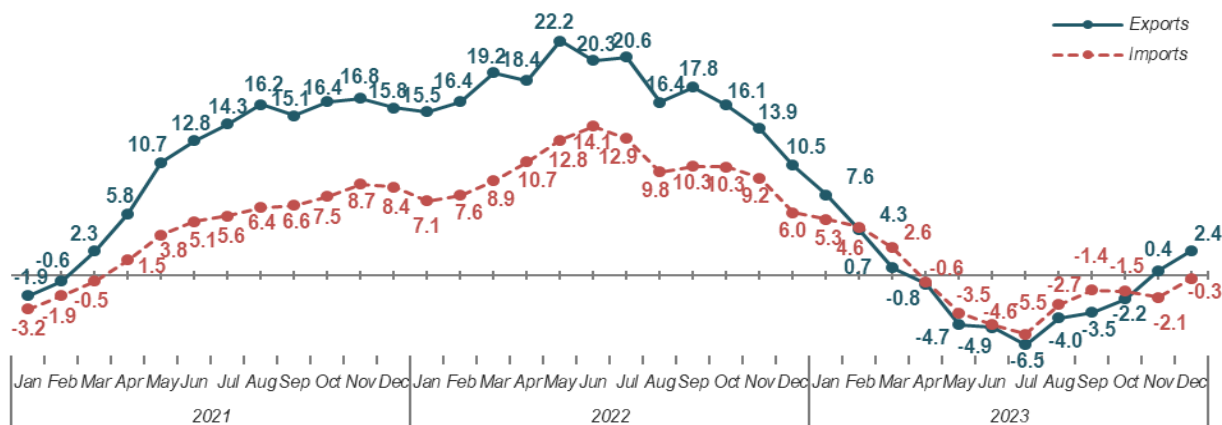


**Exhibit 4: Import Value, Unit Value Index and Volume Index Performances and Main Contributors of Import Unit Value and Volume Indices**

## YEAR-ON-YEAR COMPARISON

### TIME-SERIES OF EXPORT & IMPORT UNIT VALUE INDICES

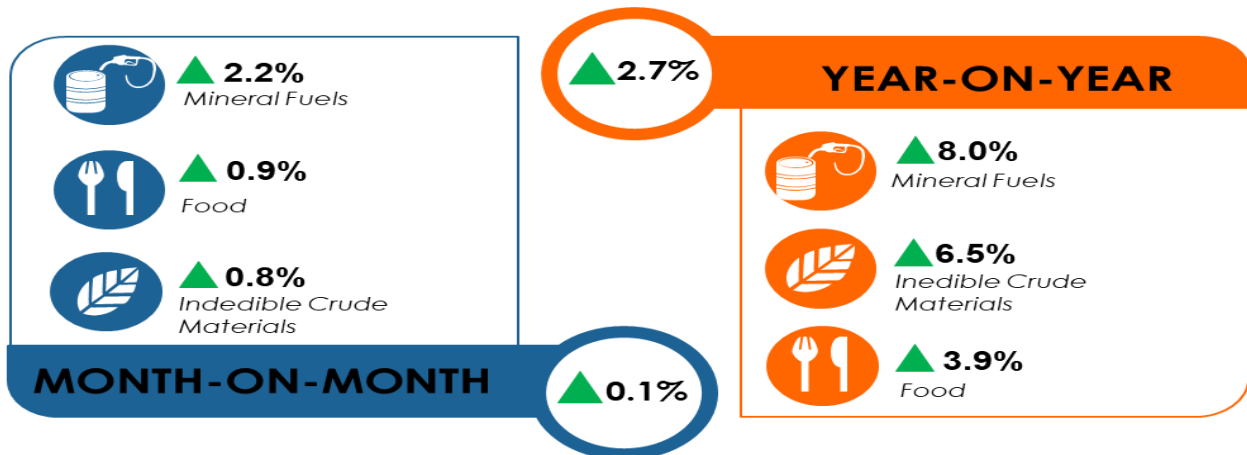
The **export unit value index** continued with a positive growth in December 2023 while the **import unit value index** remained on a downward trajectory, however at a smaller rate.



**Chart 4: Year-on-Year Percentage Change of Export & Import Unit Value Indices  
January 2021 – December 2023**

## TERMS OF TRADE

Malaysia's **terms of trade** expanded by 0.1 per cent to 114.6 points in December 2023 as compared to November 2023. The increment was driven by the increase in the index of mineral fuels (+2.2%), food (+0.9%) and inedible crude materials (+0.8%).

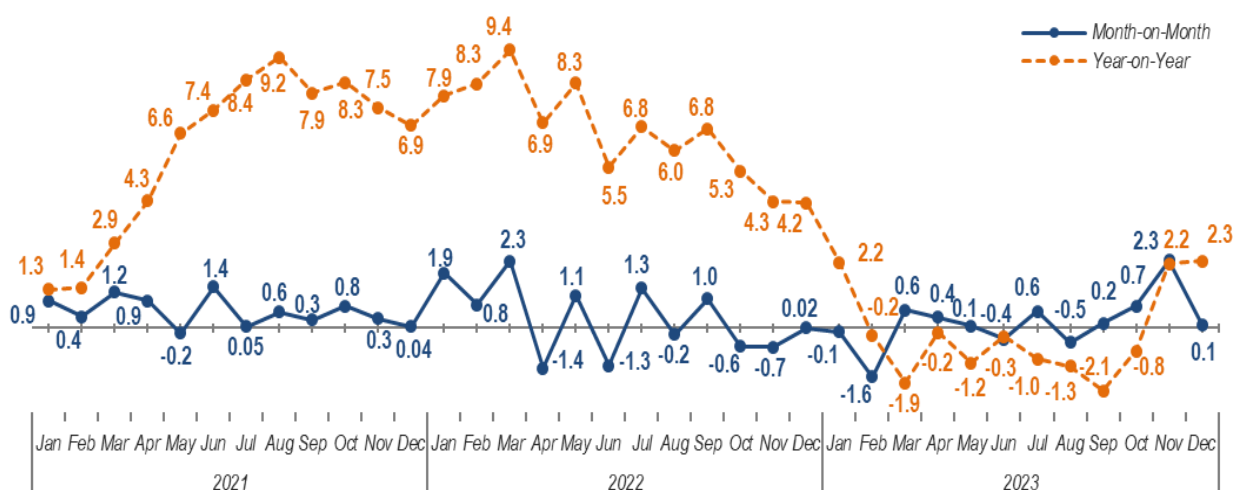


**Exhibit 5: Main Contributors of Terms of Trade based Month-on-Month and Year-on-Year**

For y-o-y comparison, Malaysia's **terms of trade** also edged up by 2.7 per cent from 111.6 points in December of previous year. This was driven by the increase in the index of mineral fuels (+8.0%), inedible crude materials (+6.5%) and food (+3.9%).

### TIME-SERIES OF TERMS OF TRADE

The m-o-m performance of **Malaysia's terms of trade** in December 2023 maintained a positive growth since March 2023. However, the month-on-month performance of the terms of trade showed a downward performance in December 2023. Despite the volatile monthly performance, the terms of trade remained above 100.0 points since December 2020.

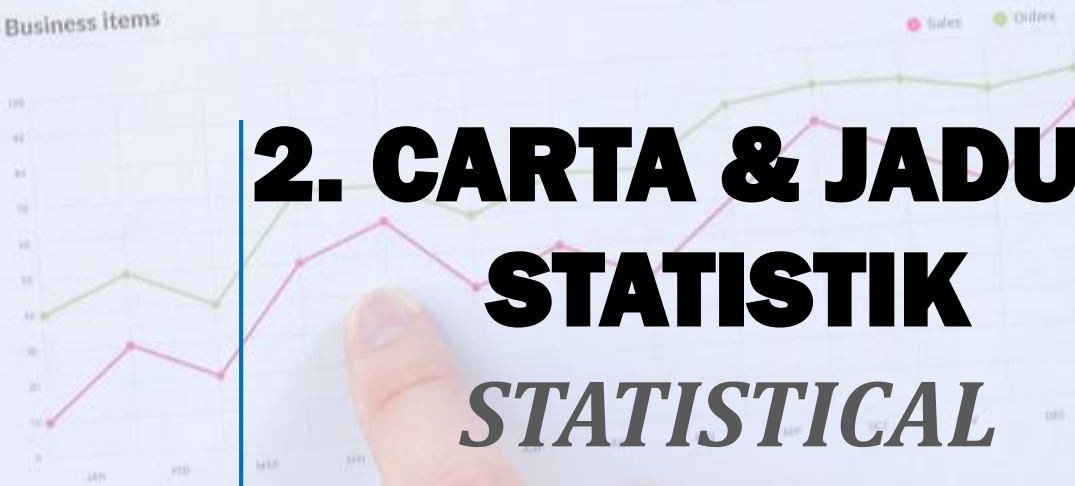


**Chart 5: Terms of Trade, January 2021 – December 2023**

Our company

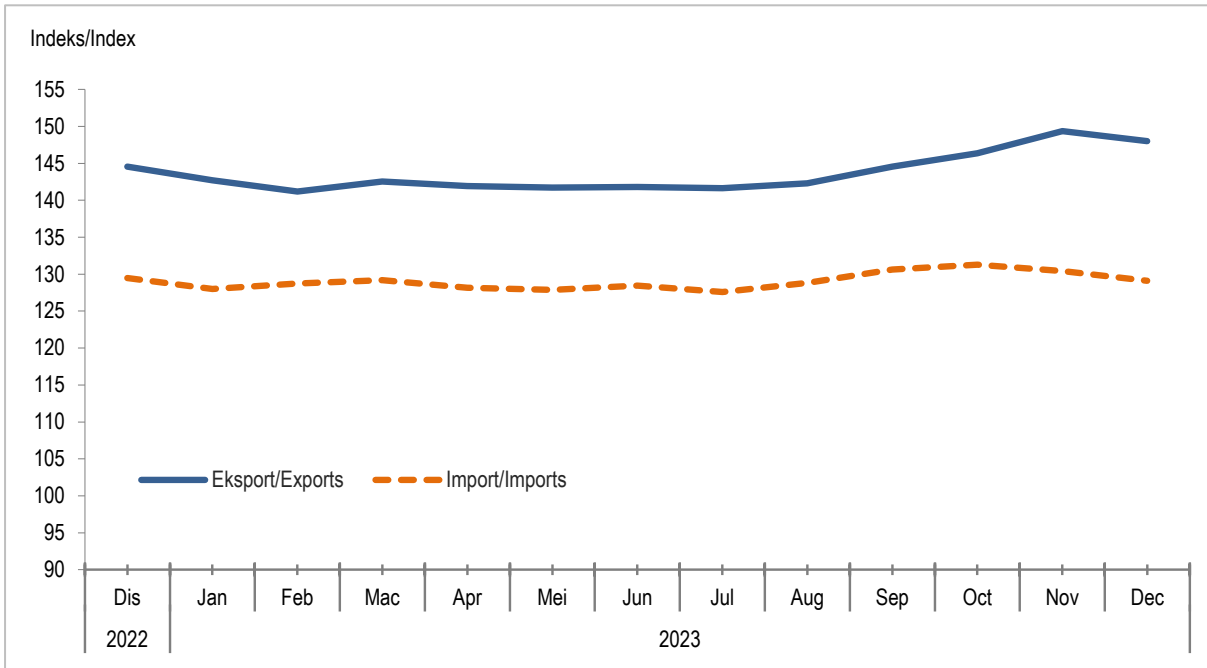


Business items

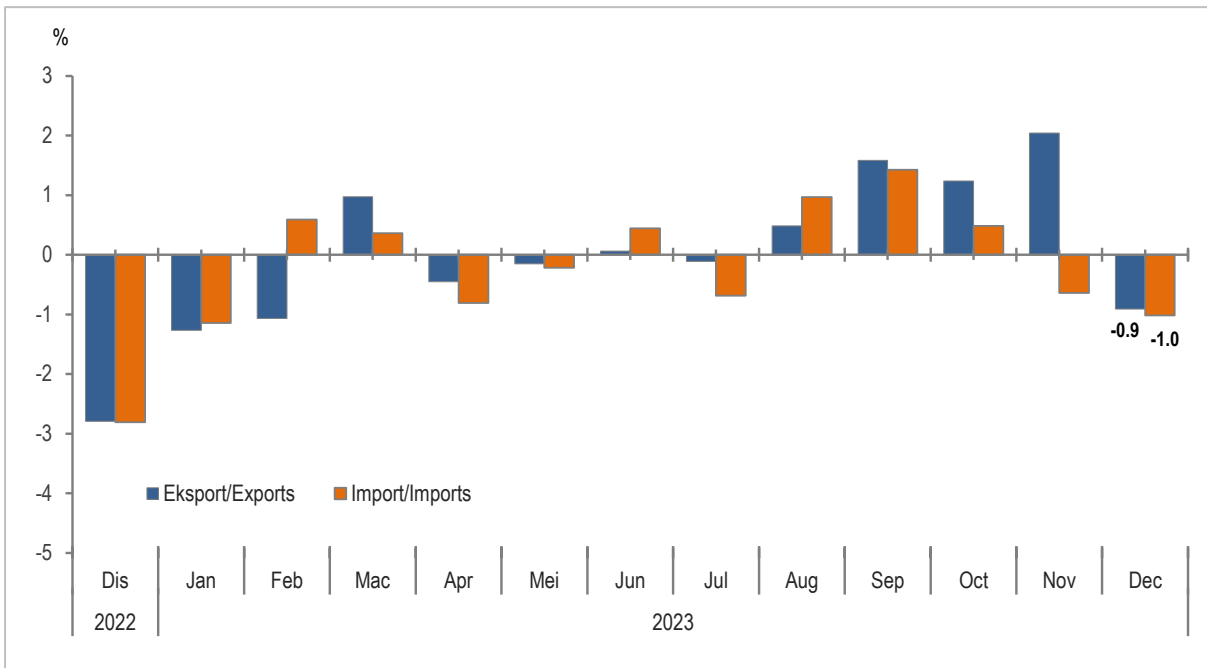


## 2. CARTA & JADUAL STATISTIK *STATISTICAL TABLES & CHARTS*

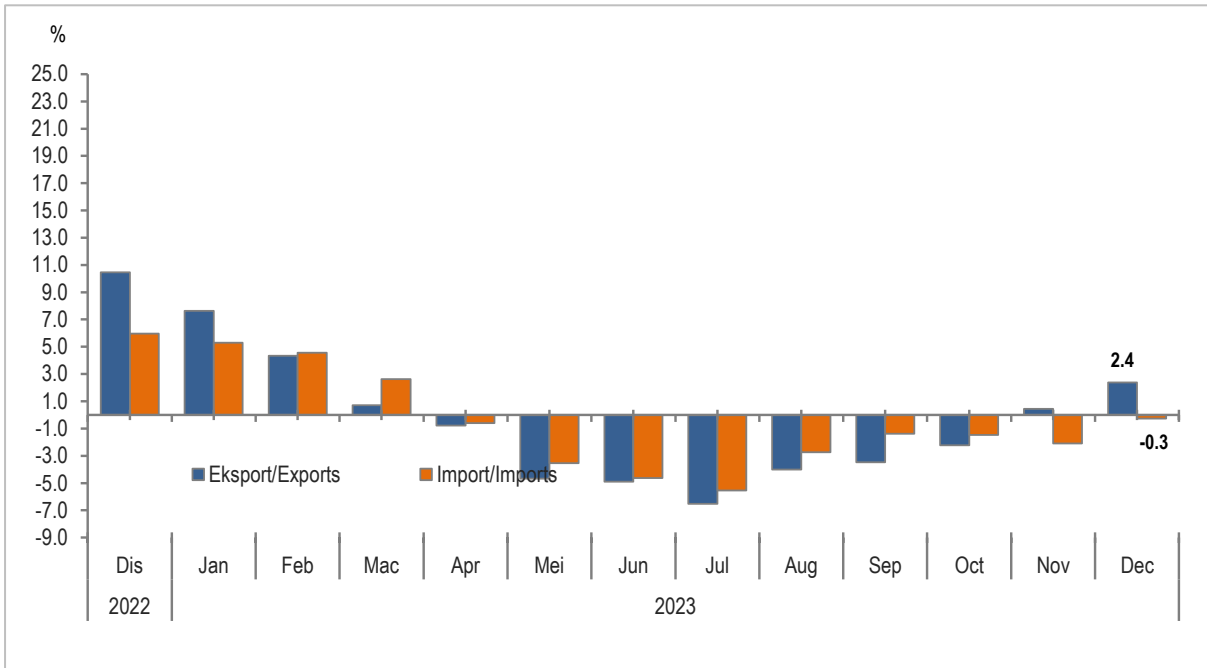
Carta 1.1: Indeks Nilai Seunit Eksport dan Import  
 Chart 1.1: Export and Import Unit Value Index



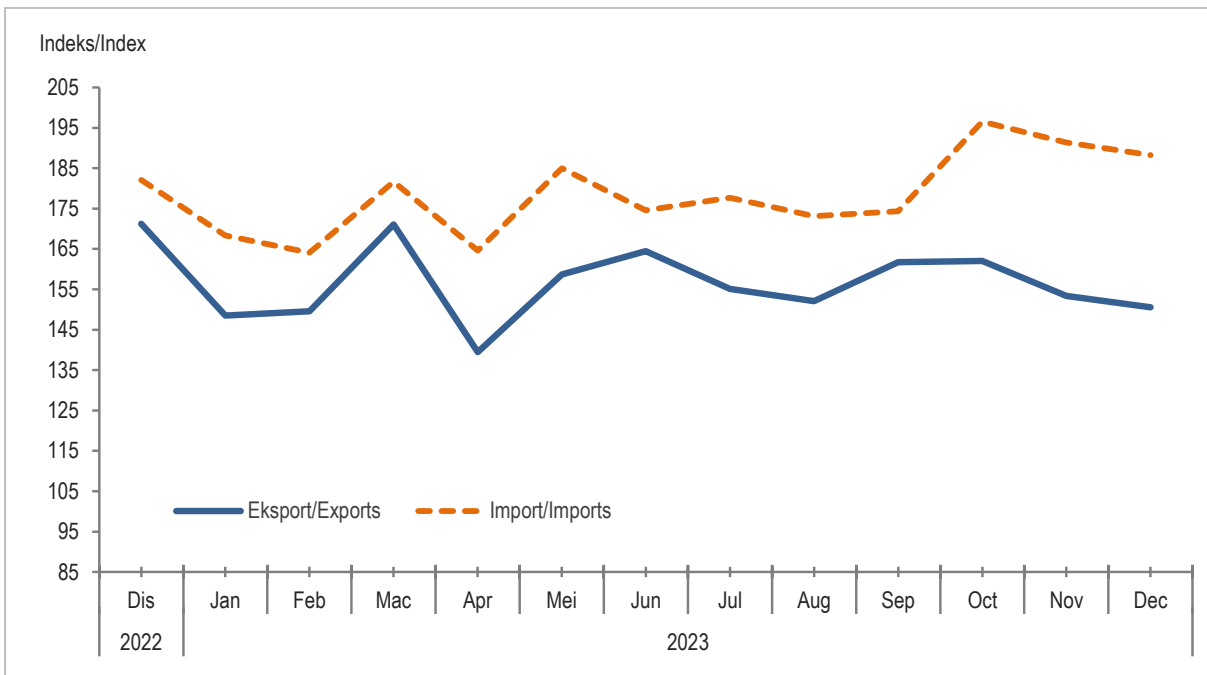
Carta 1.2: Peratus Perubahan Bulan ke Bulan Eksport dan Import Indeks Nilai seunit  
 Chart 1.2: Month-on-Month Percentage Change in Export and Import Unit Value Index



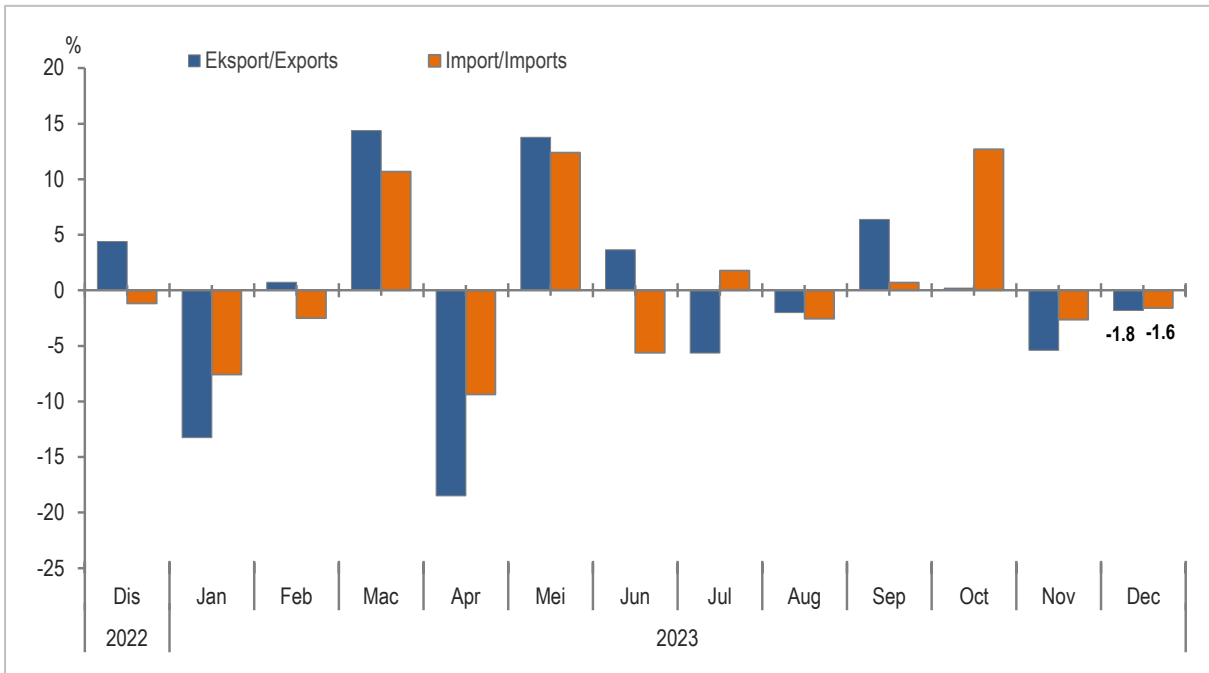
Carta 1.3: Peratus Perubahan Tahun Ke Tahun Indeks Nilai Seunit Eksport dan Import  
 Chart 1.3: Year-on-Year Percentage Change in Export and Import Unit Value Index



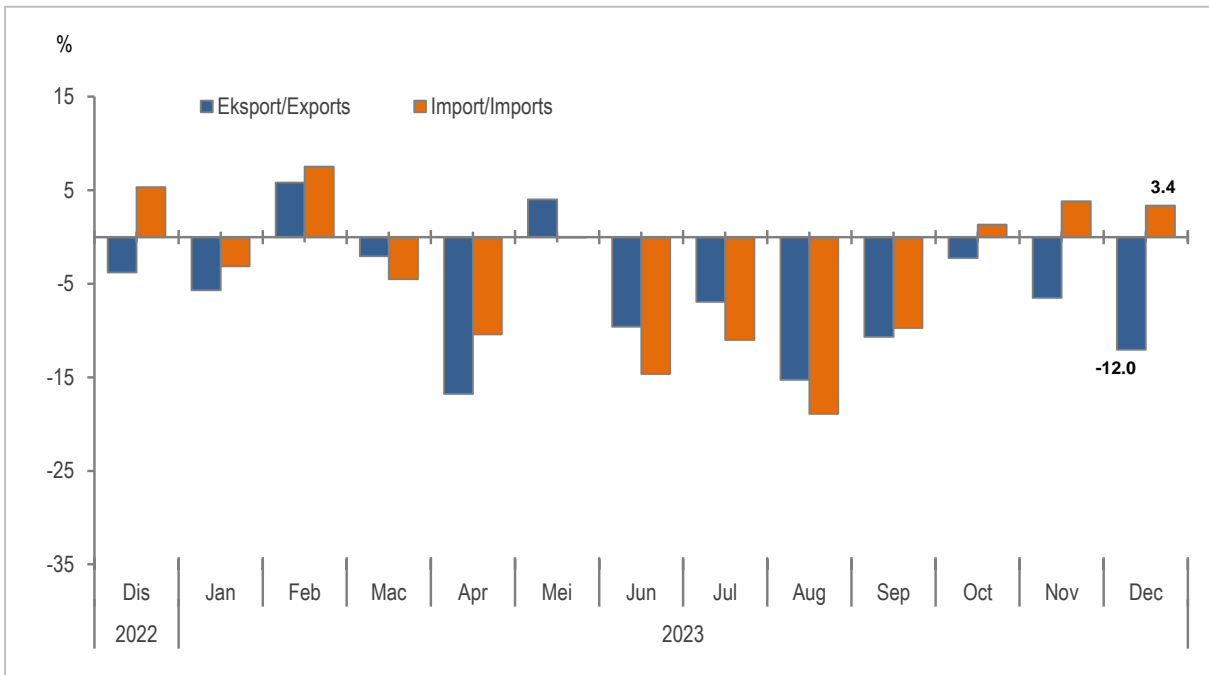
Carta 2.1: Indeks Volum Eksport dan Import  
 Chart 2.1: Export and Import Volume Indices



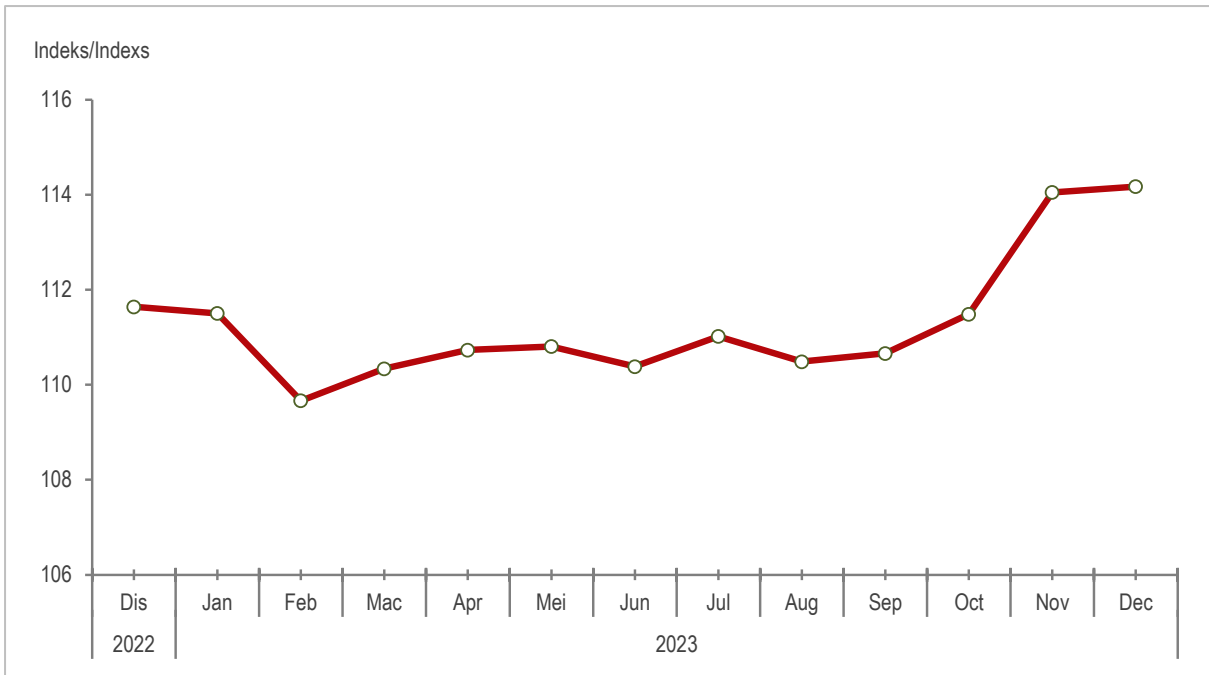
Carta 2.2: Peratus Perubahan Bulan ke Bulan Indeks Volum Eksport dan Import  
 Chart 2.2: Month-on-Month Percentage Change Export and Import Volume Index



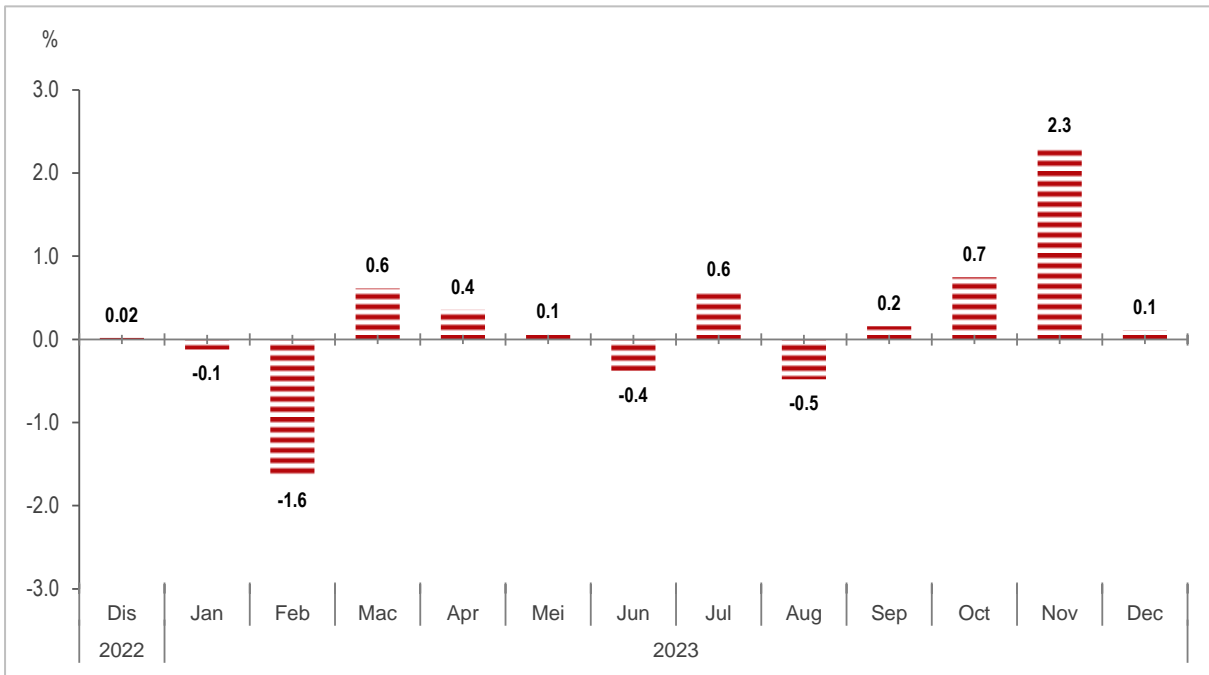
Carta 2.3: Peratus Perubahan Tahun ke Tahun Indeks Volum Eksport dan Import  
 Chart 2.3: Year-on-Year Percentage Change in Export and Import Volume Index



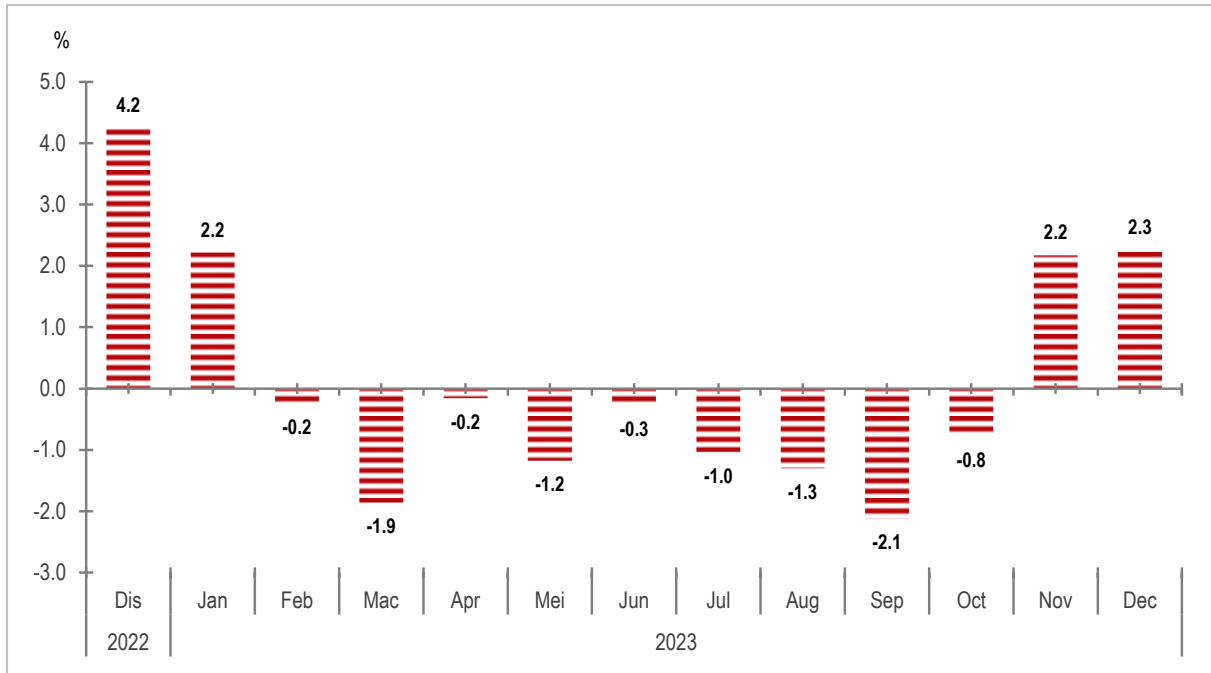
Carta 3.1: Indeks Terma Perdagangan  
 Chart 3.1: Terms of Trade Index



Carta 3.2: Peratus Perubahan Bulan Ke Bulan Indeks Terma Perdagangan  
 Chart 3.2: Month-on-Month Percentage Change in Terms of Trade Index



Carta 3.3: Peratus Perubahan Tahun ke Tahun Indeks Terma Perdagangan  
Chart 3.3: Year-on-Year Percentage Change in Terms of Trade Index



**MALAYSIA**  
**JADUAL 1A : INDEKS NILAI SEUNIT EKSPORT (2010=100) MENGIKUT SEKSYEN BARANGAN (S.I.T.C.)**  
**TABLE 1A : EXPORT UNIT VALUE INDICES (2010=100) BY COMMODITY SECTION (S.I.T.C.)**

TEMPOH PERIOD	JUMLAH TOTAL	0 MAKANAN FOOD	1 MINUMAN DAN TEBAKAU BEVERAGES AND TOBACCO	2 BAHAN-BAHAN MENTAH TIDAK BOLEH DIMAKAN CRUDE MATERIALS, INEDIBLE	3 BAHAN API GALIAN, PELINCIR, DLL. MINERAL FUELS, LUBRICANTS, ETC.	4 MINYAK DAN LEMAK BINATANG DAN SAYUR- SAYURAN ANIMAL AND VEGETABLE OILS AND FATS	5 BAHAN KIMIA CHEMICALS	6 BARANG- BARANG KELUARAN KILANG MANUFACTURED GOODS	7 JENTERA & KELENGKAPAN PENGANGKUTAN MACHINERY & TRANSPORT EQUIPMENT	8 PELBAGAI BARANG KELUARAN KILANG MISCELLANEOUS MANUFACTURED ARTICLES	9 PELBAGAI URUS NIAGA DAN BARANGAN MISCELLANEOUS TRANSACTIONS AND COMMODITIES		
WAJARAN / WEIGHTS	100.0	3.5	0.6	2.7	16.1	6.0	7.8	9.7	42.3	10.9	0.4		
2010	100.0	100.0	100.0	100.0	100.0	100.0	100.0	100.0	100.0	100.0	100.0		
2011	111.3	110.7	100.8	125.1	130.1	127.8	112.7	107.9	102.0	106.0	117.7		
2012	112.4	112.6	101.5	108.5	141.7	113.8	110.8	98.9	105.1	107.7	147.8		
2013	110.5	114.0	102.1	94.7	140.0	96.3	109.8	96.1	105.7	109.8	149.0		
2014	111.7	117.1	103.7	84.7	142.1	101.9	116.3	96.7	105.7	111.7	151.8		
2015	107.1	122.9	108.7	82.0	99.9	93.2	126.7	100.1	109.1	116.5	147.6		
2016	104.9	129.7	115.7	79.9	75.2	100.4	133.7	99.7	109.7	120.4	172.4		
2017	112.5	138.6	124.5	91.2	96.1	113.8	149.0	104.5	111.0	124.3	193.5		
2018	114.4	143.1	132.7	84.9	111.9	97.1	154.8	106.0	110.1	126.2	197.7		
2019	115.3	146.7	142.7	84.4	112.1	87.7	153.7	103.0	112.8	129.0	187.6		
2020	112.4	151.6	147.7	83.8	84.1	107.5	154.5	101.9	114.0	129.9	172.3		
2021	123.9	157.3	152.9	89.9	112.9	159.2	164.2	107.0	116.1	132.2	191.8		
2022	145.2	164.0	159.6	92.5	180.6	188.8	176.8	111.9	128.1	133.6	342.2		
2021	DIS	DEC	130.9	159.4	156.7	91.6	133.1	180.4	170.5	109.1	118.4	132.6	231.5
2022	JAN	JAN	132.6	159.6	156.8	91.6	135.9	186.5	171.7	110.0	120.0	132.5	229.8
	FEB	FEB	135.3	160.1	157.0	91.7	146.8	190.6	172.7	110.8	120.8	132.2	242.4
	MAC	MAR	141.5	160.3	157.5	92.1	171.8	203.7	174.5	111.4	122.1	131.9	285.4
	APR	APR	143.0	161.0	157.7	92.3	168.2	219.2	176.6	112.4	123.9	132.5	283.0
	MEI	MAY	148.6	162.8	157.8	93.1	184.4	232.4	178.0	113.1	126.9	133.7	348.6
	JUN	JUN	149.1	163.7	158.0	92.9	184.0	226.6	178.5	112.9	128.7	134.2	382.5
	JUL	JUL	151.5	164.7	159.8	93.4	196.7	223.4	178.5	112.6	129.8	134.7	333.6
	OGOS	AUG	148.3	166.0	159.8	93.6	193.7	182.2	178.0	112.0	129.9	134.7	378.9
	SEP	SEP	149.8	166.2	161.9	93.5	206.4	162.7	178.3	111.7	131.4	134.9	361.4
	OKT	OCT	149.7	167.0	162.3	92.9	199.4	154.1	178.7	112.1	135.2	134.4	422.2
	NOV	NOV	148.7	168.2	163.0	91.6	198.3	143.6	178.8	112.3	135.1	134.6	398.7
	DIS	DEC	144.5	168.5	163.1	91.2	181.3	140.9	177.7	111.4	133.3	133.2	439.5
2023	JAN	JAN	142.7	168.6	163.9	91.3	170.8	141.3	177.1	111.6	133.8	132.9	372.4
	FEB	FEB	141.2	168.8	164.4	90.5	164.6	137.4	176.7	111.1	133.3	132.7	437.1
	MAC	MAR	142.6	170.6	164.6	91.3	161.7	141.8	178.5	111.4	135.2	133.7	583.5
	APR	APR	141.9	171.6	164.9	92.1	154.7	141.3	178.3	111.0	136.9	134.2	540.1
	MEI	MAY	141.7	172.6	165.8	92.7	154.6	138.6	178.4	111.8	137.1	134.1	462.4
	JUN	JUN	141.8	175.1	166.2	93.9	150.0	133.2	178.3	112.3	138.8	135.0	577.1
	JUL	JUL	141.6	175.2	166.8	94.7	149.7	127.5	177.3	112.2	139.7	136.9	496.9
	OGOS	AUG	142.3	175.6	166.9	94.1	157.2	127.0	176.2	111.6	138.6	135.2	548.3
	SEP	SEP	144.6	176.4	167.3	93.4	162.8	130.2	178.1	111.4	140.0	136.6	614.9
	OKT	OCT	146.4	177.3	167.7	93.4	172.4	128.6	178.7	111.9	139.9	136.1	666.7
	NOV	NOV	149.3	178.2	167.9	94.4	191.3	126.7	178.7	111.4	139.3	136.0	668.3
	DIS <sup>p</sup>	DEC <sup>p</sup>	148.0	179.9	168.7	94.7	186.7	122.2	177.9	110.9	139.2	136.5	603.0

## MALAYSIA

JADUAL 1B : PERATUS PERUBAHAN BULAN KE BULAN INDEKS NILAI SEUNIT BAGI EKSPORT (2010=100) MENGIKUT SEKSYEN BARANGAN (S.I.T.C.)

TABLE 1B : MONTH-ON-MONTH PERCENTAGE CHANGE EXPORT UNIT VALUE INDICES (2010=100) BY COMMODITY SECTIONS (S.I.T.C.)

TEMPOH PERIOD	JUMLAH TOTAL	0 MAKANAN FOOD	1 MINUMAN DAN TEBAKAU BEVERAGES AND TOBACCO	2 BAHAN-BAHAN MENTAH TIDAK BOLEH DIMAKAN CRUDE MATERIALS, INEDIBLE	3 BAHAN API GALIAN, PELINCIR, DLL. MINERAL FUELS, LUBRICANTS, ETC.	4 MINYAK DAN LEMAK BINATANG DAN SAYUR- SAYURAN ANIMAL AND VEGETABLE OILS AND FATS	5 BAHAN KIMIA CHEMICALS	6 BARANG- BARANG KELUARAN KILANG MANUFACTURED GOODS	7 JENTERA & KELENGKAPAN PENGANGKUTAN MACHINERY & TRANSPORT EQUIPMENT	8 PELBAGAI BARANG KELUARAN KILANG MISCELLANEOUS MANUFACTURED ARTICLES	9 PELBAGAI URUS NIAGA DAN BARANGAN MISCELLANEOUS TRANSACTIONS AND COMMODITIES		
<b>WAJARAN / WEIGHTS</b>	<b>100.0</b>	<b>3.5</b>	<b>0.6</b>	<b>2.7</b>	<b>16.1</b>	<b>6.0</b>	<b>7.8</b>	<b>9.7</b>	<b>42.3</b>	<b>10.9</b>	<b>0.4</b>		
<b>2021</b>	<b>DIS</b>	<b>DEC</b>	0.2	0.4	0.7	0.6	-3.2	3.4	0.8	0.5	0.8	0.1	11.1
<b>2022</b>	<b>JAN</b>	<b>JAN</b>	1.3	0.1	0.1	0.0	2.1	3.3	0.7	0.9	1.3	-0.1	-0.7
	<b>FEB</b>	<b>FEB</b>	2.1	0.3	0.1	0.1	8.0	2.2	0.6	0.6	0.7	-0.2	5.5
	<b>MAC</b>	<b>MAR</b>	4.6	0.1	0.3	0.4	17.1	6.9	1.0	0.6	1.1	-0.2	17.7
	<b>APR</b>	<b>APR</b>	1.1	0.5	0.1	0.2	-2.1	7.6	1.2	0.9	1.5	0.4	-0.8
	<b>MEI</b>	<b>MAY</b>	3.9	1.1	0.0	0.9	9.6	6.0	0.8	0.6	2.4	0.8	23.2
	<b>JUN</b>	<b>JUN</b>	0.3	0.5	0.2	-0.2	-0.2	-2.5	0.3	-0.2	1.4	0.4	9.7
	<b>JUL</b>	<b>JUL</b>	1.6	0.6	1.1	0.4	6.9	-1.4	0.0	-0.2	0.8	0.4	-12.8
	<b>OGOS</b>	<b>AUG</b>	-2.2	0.8	0.0	0.2	-1.5	-18.4	-0.3	-0.6	0.1	0.0	13.6
	<b>SEP</b>	<b>SEP</b>	1.0	0.1	1.3	-0.1	6.6	-10.7	0.2	-0.3	1.1	0.2	-4.6
	<b>OKT</b>	<b>OCT</b>	0.0	0.5	0.2	-0.6	-3.4	-5.3	0.2	0.3	2.9	-0.4	16.8
	<b>NOV</b>	<b>NOV</b>	-0.7	0.7	0.4	-1.5	-0.6	-6.8	0.1	0.2	-0.1	0.2	-5.6
	<b>DIS</b>	<b>DEC</b>	-2.8	0.2	0.1	-0.4	-8.6	-1.9	-0.6	-0.8	-1.3	-1.1	10.2
<b>2023</b>	<b>JAN</b>	<b>JAN</b>	-1.3	0.1	0.5	0.1	-5.8	0.3	-0.3	0.2	0.4	-0.2	-15.3
	<b>FEB</b>	<b>FEB</b>	-1.1	0.1	0.3	-0.8	-3.6	-2.7	-0.2	-0.5	-0.4	-0.2	17.4
	<b>MAC</b>	<b>MAR</b>	1.0	1.1	0.1	0.8	-1.8	3.2	1.1	0.3	1.5	0.8	33.5
	<b>APR</b>	<b>APR</b>	-0.5	0.6	0.2	0.9	-4.3	-0.3	-0.1	-0.3	1.2	0.4	-7.4
	<b>MEI</b>	<b>MAY</b>	-0.2	0.6	0.6	0.7	-0.1	-1.9	0.1	0.7	0.2	-0.1	-14.4
	<b>JUN</b>	<b>JUN</b>	0.1	1.4	0.3	1.3	-3.0	-3.9	-0.1	0.4	1.2	0.7	24.8
	<b>JUL</b>	<b>JUL</b>	-0.1	0.0	0.4	0.9	-0.2	-4.2	-0.6	0.0	0.7	1.4	-13.9
	<b>OGOS</b>	<b>AUG</b>	0.5	0.3	0.1	-0.7	5.0	-0.4	-0.6	-0.6	-0.8	-1.2	10.3
	<b>SEP</b>	<b>SEP</b>	1.6	0.4	0.2	-0.8	3.6	2.6	1.1	-0.2	1.0	1.1	12.2
	<b>OKT</b>	<b>OCT</b>	1.2	0.6	0.3	0.0	5.9	-1.2	0.3	0.4	-0.1	-0.4	8.4
	<b>NOV</b>	<b>NOV</b>	2.0	0.5	0.1	1.1	11.0	-1.5	0.0	-0.4	-0.4	-0.1	0.2
	<b>DIS<sup>p</sup></b>	<b>DEC<sup>p</sup></b>	-0.9	1.0	0.5	0.3	-2.4	-3.6	-0.4	-0.5	-0.1	0.4	-9.8

## MALAYSIA

JADUAL 1C : PERATUS PERUBAHAN TAHUN KE TAHUN INDEKS NILAI SEUNIT BAGI EKSPORT (2010=100) MENGIKUT SEKSYEN BARANGAN (S.I.T.C.)

TABLE 1C : YEAR-ON-YEAR PERCENTAGE CHANGE EXPORT UNIT VALUE INDICES (2010=100) BY COMMODITY SECTION (S.I.T.C.)

TEMPOH PERIOD	JUMLAH TOTAL	0 MAKANAN FOOD	1 MINUMAN DAN TEBAKAU BEVERAGES AND TOBACCO	2 BAHAN-BAHAN MENTAH TIDAK BOLEH DIMAKAN CRUDE MATERIALS, INEDIBLE	3 BAHAN API GALIAN, PELINCIR, DLL. MINERAL FUELS, LUBRICANTS, ETC.	4 MINYAK DAN LEMAK BINATANG DAN SAYUR- SAYURAN ANIMAL AND VEGETABLE OILS AND FATS	5 BAHAN KIMIA CHEMICALS	6 BARANG- BARANG KELUARAN KILANG MANUFACTURED GOODS	7 JENTERA & KELENGKAPAN PENGANGKUTA N MACHINERY & TRANSPORT EQUIPMENT	8 PELBAGAI BARANG KELUARAN KILANG MISCELLANEOUS MANUFACTURED ARTICLES	9 PELBAGAI URUS NIAGA DAN BARANGAN MISCELLANEOUS TRANSACTIONS AND COMMODITIES		
WAJARAN / WEIGHTS	100.0	3.5	0.6	2.7	16.1	6.0	7.8	9.7	42.3	10.9	0.4		
2011	11.3	10.7	0.8	25.1	30.1	27.8	12.7	7.9	2.0	6.0	17.7		
2012	1.0	1.7	0.7	-13.2	8.9	-11.0	-1.6	-8.3	3.0	1.6	25.6		
2013	-1.7	1.3	0.6	-12.7	-1.2	-15.4	-0.9	-2.9	0.6	1.9	0.8		
2014	1.2	2.7	1.6	-10.6	1.5	5.8	5.9	0.7	0.0	1.8	1.9		
2015	-4.2	4.9	4.8	-3.1	-29.7	-8.5	8.9	3.5	3.2	4.3	-2.7		
2016	-2.0	5.6	6.5	-2.6	-24.7	7.7	5.5	-0.5	0.6	3.3	16.7		
2017	7.2	6.9	7.6	14.2	27.8	13.3	11.5	4.8	1.2	3.2	12.3		
2018	1.6	3.2	6.6	-6.9	16.4	-14.6	3.9	1.4	-0.8	1.6	2.2		
2019	0.8	2.5	7.5	-0.7	0.1	-9.7	-0.7	-2.8	2.5	2.2	-5.1		
2020	-2.5	3.4	3.5	-0.6	-24.9	22.5	0.5	-1.1	1.1	0.7	-8.2		
2021	10.2	3.8	3.5	7.2	34.2	48.1	6.3	5.1	1.8	1.8	11.4		
2022	17.2	4.3	4.4	2.9	60.0	18.6	7.7	4.5	10.3	1.0	78.4		
2021	DIS	DEC	15.8	3.5	4.9	6.8	66.7	44.3	8.5	5.7	4.8	1.9	33.5
2022	JAN	JAN	15.5	3.3	4.7	6.5	56.8	40.2	8.4	6.2	6.5	1.5	35.3
	FEB	FEB	16.4	3.2	4.4	5.0	63.6	36.7	8.4	6.2	6.7	1.1	39.3
	MAC	MAR	19.2	3.0	4.4	3.8	76.9	40.6	8.4	6.0	6.8	0.3	58.7
	APR	APR	18.4	3.0	4.1	2.9	65.4	42.6	8.8	6.1	7.7	0.3	54.7
	MEI	MAY	22.2	3.6	3.8	3.5	79.0	46.6	9.2	6.2	10.1	0.7	89.4
	JUN	JUN	20.3	3.8	3.7	2.9	66.5	38.1	9.1	5.1	10.8	1.1	103.9
	JUL	JUL	20.6	4.2	4.8	3.0	66.8	39.9	8.8	4.4	10.4	1.4	76.2
	OGOS	AUG	16.4	4.9	4.1	2.8	56.0	12.6	7.5	3.0	9.9	1.1	93.6
	SEP	SEP	17.8	5.0	5.0	2.6	68.2	-2.6	7.3	2.9	12.0	1.5	85.0
	OKT	OCT	16.1	5.4	5.0	2.1	53.0	-10.7	6.5	3.1	15.5	1.4	107.6
	NOV	NOV	13.9	6.0	4.7	0.5	44.3	-17.7	5.7	3.5	14.9	1.6	91.5
	DIS	DEC	10.5	5.7	4.1	-0.5	36.2	-21.9	4.2	2.1	12.5	0.4	89.9
2023	JAN	JAN	7.6	5.7	4.5	-0.4	25.7	-24.3	3.1	1.4	11.5	0.3	62.1
	FEB	FEB	4.3	5.4	4.7	-1.3	12.2	-27.9	2.3	0.3	10.3	0.4	80.3
	MAC	MAR	0.7	6.4	4.5	-0.9	-5.9	-30.4	2.3	0.0	10.7	1.3	104.5
	APR	APR	-0.8	6.6	4.5	-0.2	-8.0	-35.5	1.0	-1.3	10.5	1.3	90.9
	MEI	MAY	-4.7	6.0	5.1	-0.4	-16.2	-40.4	0.2	-1.1	8.0	0.3	32.6
	JUN	JUN	-4.9	7.0	5.2	1.1	-18.5	-41.2	-0.1	-0.5	7.8	0.6	50.9
	JUL	JUL	-6.5	6.4	4.4	1.5	-23.9	-42.9	-0.7	-0.4	7.6	1.6	49.0
	OGOS	AUG	-4.0	5.8	4.4	0.6	-18.9	-30.3	-1.0	-0.4	6.7	0.4	44.7
	SEP	SEP	-3.5	6.1	3.3	-0.1	-21.2	-20.0	-0.1	-0.3	6.6	1.3	70.1
	OKT	OCT	-2.2	6.2	3.4	0.5	-13.6	-16.5	0.0	-0.2	3.5	1.3	57.9
	NOV	NOV	0.4	5.9	3.0	3.1	-3.5	-11.8	-0.1	-0.8	3.1	1.0	67.6
	DIS <sup>P</sup>	DEC <sup>P</sup>	2.4	6.8	3.4	3.9	3.0	-13.3	0.1	-0.4	4.5	2.5	37.2

**MALAYSIA**  
**JADUAL 2A : INDEKS VOLUM BAGI EKSPORT (2010=100) MENGIKUT SEKSYEN BARANGAN (S.I.T.C.)**  
**TABLE 2A : EXPORT VOLUME INDICES (2010=100) BY COMMODITY SECTION (S.I.T.C.)**

TEMPOH PERIOD	JUMLAH TOTAL	0 MAKANAN FOOD	1 MINUMAN DAN TEBBAKAU BEVERAGES AND TOBACCO	2 BAHAN-BAHAN MENTAH TIDAK BOLEH DIMAKAN CRUDE MATERIALS, INEDIBLE	3 BAHAN API GALIAN, PELINCIR, DLL. MINERAL FUELS, LUBRICANTS, ETC.	4 MINYAK DAN LEMAK BINATANG DAN SAYUR- SAYURAN ANIMAL AND VEGETABLE OILS AND FATS	5 BAHAN KIMIA CHEMICALS	6 BARANG- BARANG KELUARAN KILANG MANUFACTURED GOODS	7 JENTERA & KELENGKAPAN PENGANGKUTAN MACHINERY & TRANSPORT EQUIPMENT	8 PELBAGAI BARANG KELUARAN KILANG MISCELLANEOUS MANUFACTURED ARTICLES	9 PELBAGAI URUS NIAGA DAN BARANGAN MISCELLANEOUS TRANSACTIONS AND COMMODITIES		
2010	100.0	100.0	100.0	100.0	100.0	100.0	100.0	100.0	100.0	100.0	100.0		
2011	98.1	102.1	110.4	104.6	95.4	106.2	101.1	107.4	94.3	99.4	97.5		
2012	97.9	101.2	130.4	99.6	99.7	103.9	102.5	114.0	90.5	103.9	114.8		
2013	102.0	106.7	135.0	107.7	112.1	94.0	116.1	125.0	92.3	99.9	90.3		
2014	107.4	120.5	139.7	106.1	116.9	92.1	119.9	124.3	100.1	107.4	87.5		
2015	114.2	122.4	150.2	135.4	126.0	95.5	117.9	132.8	106.6	117.4	75.7		
2016	117.2	128.1	150.6	147.2	143.4	93.0	118.9	124.6	110.2	120.4	84.4		
2017	130.2	126.4	126.4	163.8	145.8	91.8	124.2	141.1	128.7	137.1	133.4		
2018	137.4	101.8	95.5	157.1	137.8	89.5	134.9	155.1	142.5	144.6	107.0		
2019	135.2	103.9	86.0	167.6	125.8	98.7	136.1	165.1	137.1	150.5	96.3		
2020	137.2	99.3	62.4	154.3	130.7	94.6	119.4	154.0	138.9	181.3	52.2		
2021	156.7	109.6	58.0	168.2	134.8	90.7	160.9	210.8	160.2	216.9	58.8		
2022	167.0	121.2	61.3	176.7	141.5	100.4	175.0	219.9	187.0	198.3	57.8		
2021	DIS	DEC	178.8	128.3	78.6	175.6	118.9	114.4	189.8	238.6	204.2	219.5	58.1
2022	JAN	JAN	157.5	111.9	57.4	173.5	105.9	84.8	166.8	243.9	179.3	185.9	64.6
	FEB	FEB	141.3	102.1	49.7	157.9	105.5	75.8	174.0	199.4	157.3	165.4	54.2
	MAC	MAR	174.6	125.2	61.3	208.4	126.6	95.7	185.0	230.1	208.4	207.6	93.1
	APR	APR	167.6	126.9	66.9	217.3	119.4	84.3	197.7	273.8	186.2	208.0	65.3
	MEI	MAY	152.5	108.6	52.2	138.8	131.7	88.1	168.0	203.6	173.7	178.0	53.6
	JUN	JUN	181.9	125.3	50.7	172.1	174.8	108.5	182.9	230.1	197.4	234.3	52.5
	JUL	JUL	166.7	123.5	56.9	200.5	169.7	87.7	174.2	220.2	177.6	198.1	46.2
	OGOS	AUG	179.5	128.2	65.8	186.2	182.8	103.8	172.1	219.5	192.3	218.6	52.2
	SEP	SEP	181.1	122.4	58.5	175.3	155.3	118.4	176.1	214.5	209.8	215.5	47.8
	OKT	OCT	165.8	123.2	62.9	150.1	168.3	99.9	165.8	201.2	179.9	177.1	50.2
	NOV	NOV	164.0	128.3	77.4	168.0	128.5	110.5	170.8	194.9	189.1	191.2	59.3
	DIS	DEC	171.2	128.4	75.7	172.6	130.0	147.5	166.3	207.5	193.4	199.9	54.5
2023	JAN	JAN	148.5	97.7	62.0	164.9	144.1	87.8	141.4	166.0	167.1	153.1	62.6
	FEB	FEB	149.6	112.2	57.5	162.6	145.3	90.8	151.1	193.2	160.1	158.8	43.0
	MAC	MAR	171.1	126.8	84.4	186.7	156.0	119.5	164.7	219.0	183.0	195.9	60.8
	APR	APR	139.4	101.4	59.4	132.6	129.2	91.4	125.7	195.4	153.2	138.7	48.9
	MEI	MAY	158.6	120.8	69.5	166.0	167.2	92.3	152.6	198.4	165.4	172.8	58.8
	JUN	JUN	164.4	117.7	62.0	175.6	143.2	94.8	138.0	219.4	186.2	177.3	54.4
	JUL	JUL	155.1	117.4	63.0	182.1	123.4	101.5	144.3	203.9	172.2	176.7	37.3
	OGOS	AUG	152.0	121.4	66.9	160.3	148.7	101.5	149.9	210.2	153.5	178.9	49.6
	SEP	SEP	161.7	124.1	66.3	150.4	128.2	108.6	149.2	197.2	185.7	183.7	47.0
	OKT	OCT	162.1	129.7	64.6	171.3	146.5	122.2	156.0	205.9	172.3	185.9	56.1
	NOV	NOV	153.3	133.6	69.9	180.6	137.1	114.6	153.2	212.6	159.5	176.7	51.1
	DIS <sup>P</sup>	DEC <sup>P</sup>	150.6	122.9	72.6	166.3	116.8	117.1	147.1	212.4	162.9	183.0	58.3

6

## MALAYSIA

JADUAL 2B : PERATUS PERUBAHAN BULAN KE BULAN INDEKS VOLUM BAGI EKSPORT (2010=100) MENGIKUT SEKSYEN BARANGAN (S.I.T.C.)

TABLE 2B : MONTH-ON-MONTH PERCENTAGE CHANGE EXPORT VOLUME INDICES (2010=100) BY COMMODITY SECTION (S.I.T.C.)

TEMPOH PERIOD	JUMLAH TOTAL	0 MAKANAN FOOD	1 MINUMAN DAN TEBAKAU BEVERAGES AND TOBACCO	2 BAHAN-BAHAN MENTAH TIDAK BOLEH DIMAKAN CRUDE MATERIALS, INEDIBLE	3 BAHAN API GALIAN, PELINCIR, DLL. MINERAL FUELS, LUBRICANTS, ETC.	4 MINYAK DAN LEMAK BINATANG DAN SAYUR- SAYURAN ANIMAL AND VEGETABLE OILS AND FATS	5 BAHAN KIMIA CHEMICALS	6 BARANG-BARANG KELUARAN KILANG MANUFACTURED GOODS	7 JENTERA & KELENGKAPAN PENGANGKUTAN MACHINERY & TRANSPORT EQUIPMENT	8 PELBAGAI BARANG KELUARAN KILANG MISCELLANEOUS MANUFACTURED ARTICLES	9 PELBAGAI URUS NIAGA DAN BARANGAN MISCELLANEOUS TRANSACTIONS AND COMMODITIES	
2021 DIS	DEC	10.2	5.5	24.2	1.0	-8.8	9.5	9.3	-1.0	20.9	7.5	-10.7
2022 JAN	JAN	-11.9	-12.8	-27.0	-1.2	-11.0	-25.8	-12.1	2.2	-12.2	-15.3	11.2
FEB	FEB	-10.2	-8.7	-13.4	-9.0	-0.4	-10.6	4.3	-18.2	-12.3	-11.0	-16.2
MAC	MAR	23.6	22.6	23.4	32.0	20.0	26.2	6.4	15.4	32.5	25.6	71.9
APR	APR	-4.1	1.4	9.0	4.3	-5.7	-12.0	6.9	19.0	-10.6	0.2	-29.9
MEI	MAY	-9.0	-14.4	-21.9	-36.1	10.3	4.6	-15.0	-25.6	-6.7	-14.4	-17.9
JUN	JUN	19.3	15.3	-3.0	23.9	32.8	23.1	8.9	13.0	13.6	31.6	-2.0
JUL	JUL	-8.4	-1.4	12.3	16.5	-2.9	-19.2	-4.7	-4.3	-10.1	-15.5	-12.0
OGOS	AUG	7.7	3.8	15.7	-7.1	7.7	18.4	-1.2	-0.3	8.3	10.3	12.9
SEP	SEP	0.9	-4.5	-11.2	-5.8	-15.0	14.0	2.3	-2.3	9.1	-1.4	-8.4
OKT	OCT	-8.5	0.6	7.6	-14.4	8.4	-15.6	-5.8	-6.2	-14.3	-17.8	5.1
NOV	NOV	-1.1	4.2	23.0	12.0	-23.7	10.6	3.0	-3.1	5.1	7.9	18.1
DIS	DEC	4.4	0.1	-2.1	2.7	1.1	33.5	-2.6	6.5	2.3	4.6	-8.2
2023 JAN	JAN	-13.3	-23.9	-18.1	-4.4	10.9	-40.4	-15.0	-20.0	-13.6	-23.4	14.9
FEB	FEB	0.7	14.8	-7.3	-1.4	0.8	3.4	6.9	16.4	-4.2	3.7	-31.3
MAC	MAR	14.4	13.0	46.9	14.8	7.4	31.7	9.0	13.4	14.3	23.3	41.6
APR	APR	-18.5	-20.1	-29.6	-29.0	-17.2	-23.5	-23.7	-10.8	-16.3	-29.2	-19.7
MEI	MAY	13.8	19.2	17.0	25.2	29.5	0.9	21.4	1.5	7.9	24.6	20.4
JUN	JUN	3.7	-2.5	-10.9	5.8	-14.4	2.7	-9.5	10.6	12.6	2.6	-7.5
JUL	JUL	-5.7	-0.3	1.7	3.7	-13.9	7.0	4.6	-7.0	-7.5	-0.4	-31.4
OGOS	AUG	-2.0	3.4	6.2	-12.0	20.6	0.0	3.9	3.1	-10.9	1.3	33.0
SEP	SEP	6.4	2.2	-0.9	-6.2	-13.8	7.0	-0.5	-6.2	21.0	2.7	-5.4
OKT	OCT	0.2	4.5	-2.6	13.9	14.3	12.6	4.5	4.4	-7.2	1.2	19.5
NOV	NOV	-5.4	3.0	8.3	5.4	-6.4	-6.2	-1.8	3.3	-7.4	-5.0	-8.9
DIS <sup>P</sup>	DEC <sup>P</sup>	-1.8	-8.0	3.8	-7.9	-14.8	2.1	-3.9	-0.1	2.1	3.6	14.0

**MALAYSIA**  
**JADUAL 2C : PERATUS PERUBAHAN TAHUN KE TAHUN INDEKS VOLUM BAGI EKSPORT (2010=100) MENGIKUT SEKSYEN BARANGAN (S.I.T.C.)**  
**TABLE 2C : YEAR-ON-YEAR PERCENTAGE CHANGE EXPORT VOLUME INDICES (2010=100) BY COMMODITY SECTION (S.I.T.C.)**

TEMPOH PERIOD	JUMLAH TOTAL	0 MAKANAN FOOD	1 MINUMAN DAN TEBAKAU BEVERAGES AND TOBACCO	2 BAHAN-BAHAN MENTAH TIDAK BOLEH DIMAKAN CRUDE MATERIALS, INEDIBLE	3 BAHAN-API GALIAN, PELINCIR, DLL. MINERAL FUELS, LUBRICANTS, ETC.	4 MINYAK DAN LEMAK BINATANG DAN SAYUR- SAYURAN ANIMAL AND VEGETABLE OILS AND FATS	5 BAHAN KIMIA CHEMICALS	6 BARANG-BARANG KELUARAN KILANG MANUFACTURED GOODS	7 JENTERA & KELENGKAPAN PENGANGKUTAN MACHINERY & TRANSPORT EQUIPMENT	8 PELBAGAI BARANG KELUARAN KILANG MISCELLANEOUS TRANSPORT MANUFACTURED ARTICLES	9 PELBAGAI URUS NIAGA DAN BARANGAN MISCELLANEOUS TRANSACTIONS AND COMMODITIES		
2011	-1.9	2.1	10.4	4.6	-4.6	6.2	1.1	7.4	-5.7	-0.6	-2.5		
2012	-0.2	-0.9	18.2	-4.7	4.5	-2.2	1.3	6.1	-4.0	4.5	17.8		
2013	4.2	5.5	3.5	8.1	12.5	-9.5	13.3	9.6	2.0	-3.9	-21.3		
2014	5.3	13.0	3.5	-1.5	4.3	-2.0	3.3	-0.5	8.5	7.5	-3.1		
2015	6.3	1.6	7.5	27.6	7.8	3.7	-1.6	6.8	6.4	9.3	-13.5		
2016	2.6	4.6	0.3	8.7	13.8	-2.6	0.8	-6.2	3.4	2.5	11.6		
2017	11.1	-1.3	-16.1	11.3	1.7	-1.3	4.5	13.2	16.8	13.9	58.0		
2018	5.5	-19.5	-24.5	-4.1	-5.4	-2.6	8.6	10.0	10.8	5.4	-19.8		
2019	-1.6	2.1	-9.9	6.6	-8.8	10.4	0.9	6.4	-3.8	4.1	-10.0		
2020	1.5	-4.4	-27.5	-7.9	3.9	-4.2	-12.3	-6.7	1.3	20.5	-45.8		
2021	14.2	10.4	-7.0	9.0	3.2	-4.1	34.7	36.9	15.3	19.6	12.8		
2022	6.6	10.5	5.6	5.0	5.0	10.7	8.8	4.3	16.8	-8.6	-1.8		
11													
2021	DIS	DEC	12.1	21.0	-8.8	4.1	-19.1	-4.4	37.2	26.6	29.2	-1.9	3.3
2022	JAN	JAN	7.2	11.2	-8.7	9.6	-10.4	41.1	29.5	41.4	13.2	-15.9	26.2
	FEB	FEB	-0.5	2.2	-0.8	-16.4	-26.9	12.3	25.4	19.9	14.8	-24.6	4.8
	MAC	MAR	4.9	8.6	-22.4	9.6	12.4	8.7	7.7	5.2	21.3	-20.0	56.2
	APR	APR	1.9	22.1	0.5	24.2	-30.2	-5.8	31.6	33.3	16.9	-18.1	-14.9
	MEI	MAY	6.9	12.6	5.5	-2.7	-0.6	3.9	18.8	2.0	28.0	-19.3	-1.3
	JUN	JUN	13.9	18.0	22.1	33.6	17.8	8.9	-0.3	18.3	27.0	-2.4	-18.0
	JUL	JUL	14.6	16.1	50.8	53.2	10.9	-9.3	11.4	28.9	23.7	6.9	-15.4
	OGOS	AUG	27.5	16.8	16.7	3.3	51.9	30.1	9.6	12.1	35.2	20.1	-1.7
	SEP	SEP	10.5	11.6	12.7	-9.4	16.2	11.6	7.4	-15.2	23.8	6.2	-10.7
	OKT	OCT	-0.7	4.9	7.0	-17.1	25.5	2.8	-5.5	-26.5	2.0	-8.8	-21.6
	NOV	NOV	1.1	5.5	22.3	-3.4	-1.5	5.8	-1.6	-19.2	11.9	-6.4	-8.8
	DIS	DEC	-4.2	0.1	-3.6	-1.7	9.3	28.9	-12.3	-13.0	-5.3	-8.9	-6.2
2023	JAN	JAN	-5.7	-12.6	8.0	-4.9	36.1	3.6	-15.2	-31.9	-6.8	-17.6	-3.1
	FEB	FEB	5.8	9.8	15.7	3.0	37.7	19.8	-13.1	-3.1	1.8	-4.0	-20.6
	MAC	MAR	-2.0	1.3	37.7	-10.4	23.2	24.9	-11.0	-4.8	-12.2	-5.7	-34.6
	APR	APR	-16.8	-20.2	-11.1	-39.0	8.2	8.5	-36.5	-28.6	-17.7	-33.3	-25.1
	MEI	MAY	4.0	11.2	33.1	19.6	27.0	4.7	-9.2	-2.6	-4.8	-2.9	9.8
	JUN	JUN	-9.6	-6.0	22.3	2.0	-18.1	-12.6	-24.5	-4.7	-5.7	-24.3	3.6
	JUL	JUL	-6.9	-4.9	10.7	-9.1	-27.3	15.7	-17.1	-7.4	-3.0	-10.8	-19.3
	OGOS	AUG	-15.3	-5.3	1.6	-13.9	-18.7	-2.2	-12.9	-4.2	-20.2	-18.1	-4.9
	SEP	SEP	-10.7	1.4	13.4	-14.2	-17.5	-8.3	-15.3	-8.1	-11.5	-14.7	-1.7
	OKT	OCT	-2.2	5.3	2.6	14.2	-13.0	22.3	-5.9	2.3	-4.2	5.0	11.8
	NOV	NOV	-6.5	4.1	-9.6	7.5	6.7	3.7	-10.3	9.1	-15.6	-7.6	-13.8
	DIS <sup>p</sup>	DEC <sup>p</sup>	-12.0	-4.3	-4.1	-3.7	-10.1	-20.6	-11.5	2.4	-15.8	-8.4	7.0

**MALAYSIA**  
**JADUAL 3A : INDEKS NILAI SEUNIT BAGI IMPORT (2010=100) MENGIKUT SEKSYEN BARANGAN (S.I.T.C.)**  
**TABLE 3A : IMPORT UNIT VALUE INDICES (2010=100) BY COMMODITY SECTION (S.I.T.C.)**

TEMPOH PERIOD	JUMLAH TOTAL	0 MAKANAN FOOD	1 MINUMAN DAN TEBAKAU BEVERAGES AND TOBACCO	2 BAHAN-BAHAN MENTAH TIDAK BOLEH DIMAKAN CRUDE MATERIALS, INEDIBLE	3 BAHAN API GALIAN, PELINCIR, DLL. MINERAL FUELS, LUBRICANTS, ETC.	4 MINYAK DAN LEMAK BINATANG DAN SAYUR- SAYURAN ANIMAL AND VEGETABLE OILS AND FATS	5 BAHAN KIMIA CHEMICALS	6 BARANG- BARANG KELUARAN KILANG MANUFACTURED GOODS	7 JENTERA & KELENGKAPAN PENGANGKUTAN MACHINERY & TRANSPORT EQUIPMENT	8 PELBAGAI BARANG KELUARAN KILANG MISCELLANEOUS MANUFACTURED ARTICLES	9 PELBAGAI URUS NIAGA DAN BARANGAN MISCELLANEOUS TRANSACTIONS AND COMMODITIES		
WAJARAN / WEIGHTS	100.0	6.8	0.6	3.3	12.9	1.1	10.5	13.4	41.8	7.6	2.0		
2010	100.0	100.0	100.0	100.0	100.0	100.0	100.0	100.0	100.0	100.0	100.0		
2011	105.5	106.7	101.5	105.4	125.6	135.4	101.8	102.1	101.8	101.5	125.7		
2012	106.9	109.1	100.9	102.0	130.8	110.7	102.2	102.0	103.7	102.6	138.5		
2013	107.2	111.8	102.4	100.3	128.7	88.9	100.8	102.1	105.5	104.0	131.0		
2014	108.3	116.0	103.3	99.4	127.0	103.7	101.1	102.0	107.3	105.1	121.0		
2015	107.4	119.8	103.5	100.9	93.5	97.6	103.0	102.4	111.0	106.5	136.1		
2016	108.9	120.9	105.5	97.6	75.2	116.0	103.1	100.9	116.6	110.7	159.2		
2017	115.5	131.7	109.3	114.0	99.6	145.8	107.3	106.0	119.0	113.2	166.7		
2018	117.8	135.1	112.1	107.1	121.3	125.5	110.0	107.9	118.1	110.0	156.3		
2019	117.4	138.4	115.1	106.7	109.0	110.4	110.4	108.3	120.1	112.6	172.2		
2020	113.9	141.6	117.0	107.2	79.6	127.1	109.7	107.9	119.0	112.5	212.7		
2021	118.4	144.9	118.9	118.7	100.2	188.7	112.5	112.9	117.5	112.7	218.3		
2022	130.2	148.9	120.2	120.2	156.5	272.8	113.1	115.0	123.2	115.5	228.9		
2021	DIS	DEC	122.2	146.6	119.3	119.1	117.3	233.6	113.6	114.9	118.2	113.4	227.6
2022	JAN	JAN	121.5	146.7	119.6	118.7	111.9	255.5	113.3	115.1	117.8	113.6	227.9
	FEB	FEB	123.1	146.8	119.7	119.0	122.0	258.5	113.8	115.2	117.9	113.6	230.6
	MAC	MAR	125.9	147.2	120.0	118.7	137.9	268.1	113.9	115.2	118.9	114.1	236.7
	APR	APR	128.9	147.9	119.8	119.4	153.6	283.9	114.2	115.2	120.3	114.5	242.3
	MEI	MAY	132.6	148.8	120.0	120.7	170.4	317.0	113.5	115.5	122.5	114.9	244.1
	JUN	JUN	134.7	148.9	120.0	121.0	183.0	297.1	113.7	115.5	124.0	115.6	240.6
	JUL	JUL	135.1	149.4	120.2	121.1	186.4	284.9	113.1	115.3	124.8	116.1	224.8
	OGOS	AUG	132.4	149.7	120.5	121.5	167.6	273.0	112.7	115.2	124.9	116.2	221.6
	SEP	SEP	132.5	149.7	120.7	121.3	166.1	268.0	112.5	114.8	126.1	116.5	213.1
	OKT	OCT	133.2	150.0	120.8	121.3	160.8	265.4	112.6	114.8	129.3	117.0	219.7
	NOV	NOV	133.2	150.4	120.9	120.7	165.2	264.7	112.5	114.6	127.6	117.1	228.8
	DIS	DEC	129.5	150.8	119.8	119.4	153.8	238.2	111.6	114.2	123.9	116.6	216.6
2023	JAN	JAN	128.0	151.1	119.7	118.9	143.4	239.0	111.1	114.0	123.4	116.3	232.4
	FEB	FEB	128.7	151.2	119.8	117.7	144.9	242.1	110.4	114.1	125.0	116.6	226.0
	MAC	MAR	129.2	152.0	120.0	118.1	144.1	249.4	110.7	114.1	125.7	116.8	234.0
	APR	APR	128.2	152.4	120.2	117.7	144.3	252.9	110.3	114.0	122.5	117.3	247.0
	MEI	MAY	127.9	153.0	120.4	117.6	137.8	248.4	110.1	113.8	124.1	117.5	245.9
	JUN	JUN	128.5	153.1	120.5	117.5	135.5	252.6	110.3	113.9	126.0	117.7	246.7
	JUL	JUL	127.6	153.6	122.9	117.6	136.9	250.8	110.1	113.9	123.4	118.0	242.6
	OGOS	AUG	128.8	154.1	123.3	116.9	146.5	274.8	109.5	113.6	123.3	117.6	235.5
	SEP	SEP	130.6	154.4	123.4	117.0	155.0	281.6	109.8	113.5	124.8	118.0	230.2
	OKT	OCT	131.3	154.6	123.5	117.2	158.1	276.8	110.2	113.5	125.3	118.4	228.2
	NOV	NOV	130.4	154.8	123.7	117.1	153.5	268.1	110.0	113.4	126.0	118.4	237.4
	DIS <sup>p</sup>	DEC <sup>p</sup>	129.1	155.0	123.5	116.6	146.6	261.3	109.4	113.2	125.3	118.4	240.2

**MALAYSIA**  
**JADUAL 3B : PERATUS PERUBAHAN BULAN KE BULAN INDEKS NILAI SEUNIT BAGI IMPORT (2010=100) MENGIKUT SEKSYEN BARANGAN (S.I.T.C.)**  
**TABLE 3B : MONTH-ON-MONTH PERCENTAGE CHANGE IMPORT UNIT VALUE INDICES (2010=100) BY COMMODITY SECTION (S.I.T.C.)**

TEMPOH PERIOD			JUMLAH TOTAL	0 MAKANAN FOOD	1 MINUMAN DAN TEMBAKAU BEVERAGES AND TOBACCO	2 BAHAN-BAHAN MENTAH TIDAK BOLEH DIMAKAN CRUDE MATERIALS, INEDIBLE	3 BAHAN API GALIAN, PELINCIR, DLL. MINERAL FUELS, LUBRICANTS, ETC.	4 MINYAK DAN LEMAK BINATANG DAN SAYURAN ANIMAL AND VEGETABLE OILS AND FATS	5 BAHAN KIMIA CHEMICALS	6 BARANG-BARANG KELUARAN KILANG MANUFACTURED GOODS	7 JENTERA & KELENGKAPAN PENGANGKUTAN MACHINERY & TRANSPORT EQUIPMENT	8 PELBAGAI BARANG KELUARAN KILANG MISCELLANEOUS MANUFACTURED ARTICLES	9 PELBAGAI URUS NIAGA DAN BARANGAN MISCELLANEOUS TRANSACTIONS AND COMMODITIES
WAJARAN / WEIGHTS			100.0	6.8	0.6	3.3	12.9	1.1	10.5	13.4	41.8	7.6	2.0
2021	DIS	DEC	0.2	0.4	0.1	-0.2	-2.6	7.0	0.4	0.5	0.5	0.0	2.3
2022	JAN	JAN	-0.5	0.1	0.2	-0.3	-4.6	9.3	-0.2	0.1	-0.3	0.1	0.1
	FEB	FEB	1.3	0.1	0.1	0.2	9.0	1.2	0.5	0.1	0.1	0.0	1.2
	MAC	MAR	2.3	0.3	0.3	-0.2	13.1	3.7	0.1	0.0	0.8	0.4	2.6
	APR	APR	2.4	0.5	-0.2	0.6	11.4	5.9	0.0	0.1	1.1	0.4	2.4
	MEI	MAY	2.8	0.7	0.1	1.0	11.0	11.7	-0.3	0.2	1.9	0.3	0.7
	JUN	JUN	1.6	0.1	0.1	0.3	7.4	-6.3	0.2	0.0	1.2	0.6	-1.4
	JUL	JUL	0.3	0.3	0.1	0.0	1.9	-4.1	-0.5	-0.2	0.6	0.4	-6.6
	OGOS	AUG	-1.9	0.2	0.3	0.3	-10.1	-4.2	-0.4	-0.1	0.1	0.1	-1.4
	SEP	SEP	0.0	0.0	0.1	-0.2	-0.9	-1.8	-0.2	-0.4	1.0	0.3	-3.8
	OKT	OCT	0.6	0.2	0.1	0.1	-3.2	-1.0	0.1	0.0	2.5	0.5	3.1
	NOV	NOV	0.0	0.2	0.1	-0.6	2.7	-0.3	-0.1	-0.2	-1.3	0.1	4.2
DIS	DEC	-2.8	0.2	-0.9	-1.0	-6.9	-10.0	-0.8	-0.3	-2.9	-0.4	-5.3	
2023	JAN	JAN	-1.1	0.2	-0.1	-0.5	-6.8	0.3	-0.4	-0.2	-0.4	-0.3	7.3
	FEB	FEB	0.6	0.1	0.0	-1.0	1.1	1.3	-0.6	0.1	1.4	0.3	-2.7
	MAC	MAR	0.4	0.5	0.2	0.3	-0.5	3.0	0.3	0.0	0.5	0.2	3.5
	APR	APR	-0.8	0.3	0.2	-0.4	0.2	1.4	-0.3	-0.1	-2.5	0.4	5.6
	MEI	MAY	-0.2	0.4	0.1	-0.1	-4.5	-1.8	-0.2	-0.2	1.3	0.2	-0.5
	JUN	JUN	0.4	0.1	0.1	-0.1	-1.6	1.7	0.2	0.1	1.5	0.2	0.3
	JUL	JUL	-0.7	0.3	2.0	0.1	1.0	-0.7	-0.3	0.0	-2.0	0.3	-1.6
	OGOS	AUG	1.0	0.3	0.3	-0.6	7.0	9.6	-0.5	-0.3	-0.1	-0.3	-2.9
	SEP	SEP	1.4	0.2	0.1	0.1	5.8	2.4	0.3	-0.1	1.3	0.3	-2.3
	OKT	OCT	0.5	0.1	0.1	0.2	2.0	-1.7	0.4	0.0	0.4	0.4	-0.9
	NOV	NOV	-0.6	0.1	0.1	-0.1	-2.9	-3.1	-0.2	-0.1	0.5	0.0	4.1
DIS <sup>p</sup>	DEC <sup>p</sup>	-1.0	0.1	-0.1	-0.5	-4.5	-2.5	-0.5	-0.2	-0.5	-0.06	1.2	

## MALAYSIA

JADUAL 3C : PERATUS PERUBAHAN TAHUN KE TAHUN INDEKS NILAI SEUNIT BAGI IMPORT (2010=100) MENGIKUT SEKSYEN BARANGAN (S.I.T.C.)  
TABLE 3C : YEAR-ON-YEAR PERCENTAGE CHANGE IMPORT UNIT VALUE INDICES (2010=100) BY COMMODITY SECTION (S.I.T.C.)

TEMPOH PERIOD	JUMLAH TOTAL	0 MAKANAN FOOD	1 MINUMAN DAN TEBAKAU BEVERAGES AND TOBACCO	2 BAHAN-BAHAN MENTAH TIDAK BOLEH DIMAKAN CRUDE MATERIALS, INEDIBLE	3 BAHAN API GALIAN, PELINCIR, DLL. MINERAL FUELS, LUBRICANTS, ETC.	4 MINYAK DAN LEMAK BINATANG DAN SAYUR-SAYURAN ANIMAL AND VEGETABLE OILS AND FATS	5 BAHAN KIMIA CHEMICALS	6 BARANG- BARANG KELUARAN KILANG MANUFACTURED GOODS	7 JENTERA & KELENGKAPAN PENGANGKUTAN MACHINERY & TRANSPORT EQUIPMENT	8 PELBAGAI BARANG KELUARAN KILANG MISCELLANEOUS MANUFACTURED ARTICLES	9 PELBAGAI URUS NIAGA DAN BARANGAN MISCELLANEOUS TRANSACTIONS AND COMMODITIES			
<b>WAJARAN / WEIGHTS</b>	<b>100.0</b>	<b>6.8</b>	<b>0.6</b>	<b>3.3</b>	<b>12.9</b>	<b>1.1</b>	<b>10.5</b>	<b>13.4</b>	<b>41.8</b>	<b>7.6</b>	<b>2.0</b>			
<b>2011</b>	5.5	6.7	1.5	5.4	25.6	35.4	1.8	2.1	1.8	1.5	25.7			
<b>2012</b>	1.3	2.3	-0.6	-3.2	4.1	-18.2	0.4	-0.1	1.8	1.1	10.1			
<b>2013</b>	0.3	2.5	1.5	-1.6	-1.5	-19.7	-1.4	0.1	1.8	1.4	-5.4			
<b>2014</b>	1.0	3.7	0.9	-0.9	-1.4	16.6	0.3	-0.1	1.7	1.1	-7.6			
<b>2015</b>	-0.8	3.3	0.2	1.5	-26.4	-5.9	1.9	0.4	3.5	1.3	12.4			
<b>2016</b>	1.4	0.9	1.9	-3.3	-19.6	18.9	0.2	-1.4	5.0	4.0	17.0			
<b>2017</b>	6.1	8.9	3.6	16.8	32.5	25.8	4.1	5.0	2.0	2.2	4.7			
<b>2018</b>	2.0	2.6	2.6	-6.0	21.7	-13.9	2.4	1.8	-0.7	-1.0	-6.3			
<b>2019</b>	-0.3	2.5	2.7	-0.3	-10.1	-12.0	0.3	0.4	1.7	0.4	10.2			
<b>2020</b>	-3.0	2.3	1.7	0.4	-27.0	15.1	-0.6	-0.3	-0.9	-0.1	23.6			
<b>2021</b>	3.9	2.3	1.6	10.7	25.8	48.5	2.6	4.6	-1.3	0.2	2.6			
<b>2022</b>	10.0	2.8	1.1	1.3	56.3	44.6	0.5	1.9	4.8	2.4	4.8			
14	<b>2021</b>	<b>DIS</b>	<b>DEC</b>	8.4	3.2	1.3	5.4	63.7	53.5	2.9	5.2	1.2	1.3	4.1
	<b>2022</b>	<b>JAN</b>	<b>JAN</b>	7.1	3.2	1.4	5.2	45.0	61.1	2.1	4.9	1.2	1.5	4.1
		<b>FEB</b>	<b>FEB</b>	7.6	2.9	1.3	4.3	48.7	58.9	2.3	4.4	1.0	1.4	7.7
		<b>MAC</b>	<b>MAR</b>	8.9	2.8	1.5	1.0	60.7	56.6	1.9	3.9	1.2	1.5	15.4
		<b>APR</b>	<b>APR</b>	10.7	2.6	1.2	-0.8	74.0	60.0	1.4	3.3	2.1	2.1	14.4
		<b>MEI</b>	<b>MAY</b>	12.8	2.8	1.0	0.6	80.2	74.5	0.9	2.5	4.3	2.1	11.9
		<b>JUN</b>	<b>JUN</b>	14.1	2.4	0.8	0.0	90.5	56.6	0.8	1.8	5.5	2.7	10.8
		<b>JUL</b>	<b>JUL</b>	12.9	2.5	0.7	0.7	79.6	51.8	-0.1	1.2	5.4	2.8	2.8
		<b>OGOS</b>	<b>AUG</b>	9.8	2.6	0.9	1.2	50.6	43.3	-0.4	0.9	5.8	2.7	-1.8
		<b>SEP</b>	<b>SEP</b>	10.3	2.7	1.0	1.0	50.9	37.3	-0.3	0.4	7.7	3.0	-3.5
		<b>OKT</b>	<b>OCT</b>	10.3	2.9	1.5	1.3	39.5	34.1	-0.2	0.4	10.4	3.3	-0.1
		<b>NOV</b>	<b>NOV</b>	9.2	3.0	1.5	1.1	37.2	21.2	-0.5	0.2	8.6	3.3	2.8
		<b>DIS</b>	<b>DEC</b>	6.0	2.8	0.4	0.3	31.1	1.9	-1.8	-0.6	4.8	2.8	-4.9
	<b>2023</b>	<b>JAN</b>	<b>JAN</b>	5.3	3.0	0.1	0.1	28.1	-6.5	-2.0	-0.9	4.7	2.4	2.0
		<b>FEB</b>	<b>FEB</b>	4.6	3.0	0.1	-1.1	18.8	-6.3	-3.0	-0.9	6.0	2.6	-2.0
		<b>MAC</b>	<b>MAR</b>	2.6	3.3	0.0	-0.5	4.5	-7.0	-2.8	-0.9	5.6	2.4	-1.1
		<b>APR</b>	<b>APR</b>	-0.6	3.1	0.3	-1.5	-6.0	-10.9	-3.1	-1.1	1.8	2.4	2.0
		<b>MEI</b>	<b>MAY</b>	-3.5	2.8	0.4	-2.5	-19.2	-21.6	-3.0	-1.4	1.3	2.3	0.7
		<b>JUN</b>	<b>JUN</b>	-4.6	2.8	0.4	-2.9	-25.9	-15.0	-3.0	-1.4	1.6	1.9	2.5
		<b>JUL</b>	<b>JUL</b>	-5.5	2.8	2.3	-2.8	-26.5	-12.0	-2.7	-1.2	-1.1	1.7	7.9
		<b>OGOS</b>	<b>AUG</b>	-2.7	2.9	2.3	-3.8	-12.6	0.7	-2.9	-1.4	-1.3	1.3	6.3
		<b>SEP</b>	<b>SEP</b>	-1.4	3.1	2.2	-3.5	-6.7	5.1	-2.4	-1.1	-1.0	1.3	8.0
		<b>OKT</b>	<b>OCT</b>	-1.5	3.1	2.2	-3.4	-1.7	4.3	-2.1	-1.1	-3.1	1.2	3.9
		<b>NOV</b>	<b>NOV</b>	-2.1	2.9	2.3	-2.9	-7.1	1.3	-2.3	-1.0	-1.3	1.1	3.8
		<b>DIS<sup>P</sup></b>	<b>DEC<sup>P</sup></b>	-0.3	2.8	3.1	-2.4	-4.7	9.7	-1.9	-0.9	1.1	1.5	10.9

**MALAYSIA**  
**JADUAL 4A : INDEKS VOLUM BAGI IMPORT (2010=100) MENGIKUT SEKSYEN BARANGAN (S.I.T.C.)**  
**TABLE 4A : IMPORT VOLUME INDICES (2010=100) BY COMMODITY SECTION (S.I.T.C.)**

TEMPOH PERIOD	JUMLAH TOTAL	0 MAKANAN FOOD	1 MINUMAN DAN TEBBAKAU BEVERAGES AND TOBACCO	2 BAHAN-BAHAN MENTAH TIDAK BOLEH DIMAKAN CRUDE MATERIALS, INEDIBLE	3 BAHAN API GALIAN, PELINCIR, DLL. MINERAL FUELS, LUBRICANTS, ETC.	4 MINYAK DAN LEMAK BINATANG DAN SAYUR- SAYURAN ANIMAL AND VEGETABLE OILS AND FATS	5 BAHAN KIMIA CHEMICALS	6 BARANG- BARANG KELUARAN KILANG MANUFACTURED GOODS	7 JENTERA & KELENGKAPAN PENGANGKUTAN MACHINERY & TRANSPORT EQUIPMENT	8 PELBAGAI BARANG KELUARAN KILANG MISCELLANEOUS MANUFACTURED ARTICLES	9 PELBAGAI URUS NIAGA DAN BARANGAN MISCELLANEOUS TRANSACTIONS AND COMMODITIES		
2010	100.0	100.0	100.0	100.0	100.0	100.0	100.0	100.0	100.0	100.0	100.0		
2011	102.8	106.7	129.4	120.8	102.3	119.1	110.6	112.1	95.8	110.6	103.5		
2012	107.4	109.3	159.2	125.5	125.1	120.9	111.5	112.5	98.3	113.7	98.9		
2013	114.5	114.8	168.5	122.5	154.8	65.6	123.2	127.6	100.1	111.1	130.2		
2014	119.4	121.6	166.4	113.7	171.6	61.7	136.4	130.8	101.7	123.8	133.3		
2015	120.8	125.1	186.6	114.7	171.7	98.8	141.5	133.5	102.2	147.6	120.9		
2016	121.4	127.8	182.5	130.8	181.1	65.3	149.1	132.9	103.6	153.5	89.2		
2017	137.2	128.8	143.1	152.3	203.8	64.2	167.8	141.1	119.8	165.0	119.1		
2018	141.4	122.8	144.4	175.7	197.8	74.5	181.1	145.7	123.5	166.2	118.7		
2019	137.0	122.9	137.4	201.3	214.6	82.1	176.5	139.5	113.3	164.3	97.6		
2020	133.1	129.5	95.3	196.9	224.1	95.3	163.0	128.6	112.3	154.9	80.4		
2021	157.9	145.2	93.9	254.4	235.3	108.2	207.3	143.8	135.6	180.5	134.7		
2022	188.0	167.9	128.7	227.7	288.2	93.0	248.1	168.2	165.4	223.4	126.0		
15													
2021	DIS	DEC	173.0	164.3	124.7	255.2	189.6	79.2	237.2	168.4	160.2	208.5	118.5
2022	JAN	JAN	173.7	181.8	109.5	254.7	203.7	86.3	247.3	168.4	155.9	201.0	106.8
	FEB	FEB	152.6	132.7	85.6	196.9	207.5	131.2	221.9	140.0	135.8	175.6	86.2
	MAC	MAR	190.2	167.9	151.7	253.6	307.2	110.3	261.3	173.2	163.1	229.7	78.6
	APR	APR	183.8	157.9	102.9	304.7	258.8	92.5	259.2	177.4	160.9	207.4	93.0
	MEI	MAY	185.0	172.8	103.6	230.5	243.3	74.3	242.8	169.1	171.1	215.3	183.7
	JUN	JUN	204.6	168.8	124.0	241.4	310.2	83.9	279.0	206.7	176.2	232.7	173.1
	JUL	JUL	199.6	167.7	151.6	199.7	331.6	111.0	258.9	177.6	169.9	233.1	168.3
	OGOS	AUG	213.5	184.4	154.6	226.7	421.9	104.1	264.3	168.7	173.5	254.5	134.2
	SEP	SEP	193.1	167.7	130.3	211.7	296.1	111.0	246.8	164.3	173.5	217.0	166.2
	OKT	OCT	193.9	175.6	133.2	191.4	349.3	58.6	230.2	145.5	174.6	215.7	116.2
	NOV	NOV	184.3	171.9	146.5	227.8	249.2	70.4	234.1	160.1	169.7	250.6	113.5
	DIS	DEC	182.1	165.2	151.6	193.1	279.4	81.9	231.1	167.2	160.5	247.7	91.8
2023	JAN	JAN	168.3	161.9	126.9	178.4	261.9	93.5	220.3	156.9	148.0	205.7	73.2
	FEB	FEB	164.1	150.3	121.4	154.6	329.2	72.5	218.0	138.8	133.7	172.0	118.0
	MAC	MAR	181.6	185.3	94.0	232.6	286.3	53.5	242.6	174.8	155.7	218.9	80.8
	APR	APR	164.6	167.0	118.4	176.9	278.2	51.3	212.9	158.0	143.2	176.2	72.4
	MEI	MAY	185.0	173.3	120.3	198.9	346.2	61.0	253.5	180.4	151.6	199.3	103.0
	JUN	JUN	174.6	159.8	134.5	177.0	358.6	72.3	222.0	160.2	160.2	197.3	108.1
	JUL	JUL	177.7	166.1	137.0	180.0	315.4	74.0	228.6	168.6	151.2	211.8	86.1
	OGOS	AUG	173.1	160.9	133.4	181.5	261.4	73.0	221.8	163.8	156.2	205.7	102.8
	SEP	SEP	174.3	169.6	132.2	196.3	245.9	38.8	223.7	176.1	158.7	210.2	94.7
	OKT	OCT	196.5	184.2	146.7	215.7	349.7	48.2	243.9	177.6	168.3	218.3	129.8
	NOV	NOV	191.3	178.1	123.0	199.4	296.2	39.6	240.8	179.5	172.2	239.7	88.1
	DIS <sup>P</sup>	DEC <sup>P</sup>	188.3	181.8	124.3	204.9	300.5	50.5	225.6	185.3	165.7	236.8	78.5

## MALAYSIA

JADUAL 4B : PERATUS PERUBAHAN BULAN KE BULAN INDEKS VOLUM BAGI IMPORT (2010=100) MENGIKUT SEKSYEN BARANGAN (S.I.T.C.)  
 TABLE 4B : MONTH-ON-MONTH PERCENTAGE CHANGE IMPORT VOLUME INDICES (2010=100) BY COMMODITY SECTION (S.I.T.C.)

TEMPOH PERIOD		JUMLAH TOTAL	0 MAKANAN FOOD	1 MINUMAN DAN TEBAKAU BEVERAGES AND TOBACCO	2 BAHAN-BAHAN MENTAH TIDAK BOLEH DIMAKAN CRUDE MATERIALS, INEDIBLE	3 BAHAN API GALIAN, PELINCIR, DLL. MINERAL FUELS, LUBRICANTS, ETC.	4 MINYAK DAN LEMAK BINATANG DAN SAYUR-SAYURAN ANIMAL AND VEGETABLE OILS AND FATS	5 BAHAN KIMIA CHEMICALS	6 BARANG-BARANG KELUARAN KILANG MANUFACTURED GOODS	7 JENTERA & KELENGKAPAN PENGANGKUTAN MACHINERY & TRANSPORT EQUIPMENT	8 PELBAGAI BARANG KELUARAN KILANG MISCELLANEOUS MANUFACTURED ARTICLES	9 PELBAGAI URUS NIAGA DAN BARANGAN MISCELLANEOUS TRANSACTIONS AND COMMODITIES	
2021	DIS	DEC	-0.7	7.5	25.1	-1.2	-23.9	-25.9	1.7	9.1	2.6	5.0	6.1
2022	JAN	JAN	0.4	10.7	-12.2	-0.2	7.5	8.9	4.3	0.0	-2.7	-3.6	-9.9
	FEB	FEB	-12.2	-27.0	-21.8	-22.7	1.8	52.0	-10.3	-16.9	-12.9	-12.7	-19.2
	MAC	MAR	24.6	26.5	77.2	28.8	48.1	-15.9	17.8	23.7	20.1	30.8	-8.9
	APR	APR	-3.4	-6.0	-32.2	20.2	-15.8	-16.1	-0.8	2.4	-1.4	-9.7	18.3
	MEI	MAY	0.7	9.4	0.7	-24.4	-6.0	-19.7	-6.3	-4.7	6.4	3.8	97.6
	JUN	JUN	10.6	-2.3	19.6	4.7	27.5	12.8	14.9	22.2	3.0	8.1	-5.8
	JUL	JUL	-2.4	-0.7	22.3	-17.3	6.9	32.4	-7.2	-14.1	-3.6	0.2	-2.8
	OGOS	AUG	6.9	10.0	2.0	13.5	27.2	-6.2	2.1	-5.0	2.1	9.2	-20.3
	SEP	SEP	-9.6	-9.1	-15.8	-6.6	-29.8	6.6	-6.6	-2.6	0.0	-14.7	23.9
	OKT	OCT	0.4	4.7	2.2	-9.6	18.0	-47.2	-6.7	-11.4	0.6	-0.6	-30.1
	NOV	NOV	-5.0	-2.1	10.0	19.0	-28.7	20.1	1.7	10.0	-2.8	16.2	-2.3
	DIS	DEC	-1.2	-3.9	3.5	-15.2	12.1	16.3	-1.3	4.4	-5.4	-1.2	-19.1
2023	JAN	JAN	-7.6	-2.0	-16.3	-7.6	-6.3	14.2	-4.7	-6.1	-7.8	-17.0	-20.2
	FEB	FEB	-2.5	-7.1	-4.4	-13.3	25.7	-22.5	-1.0	-11.5	-9.7	-16.4	61.0
	MAC	MAR	10.7	23.2	-22.5	50.4	-13.0	-26.2	11.3	25.9	16.5	27.3	-31.5
	APR	APR	-9.4	-9.9	25.9	-23.9	-2.8	-4.2	-12.2	-9.6	-8.1	-19.5	-10.3
	MEI	MAY	12.4	3.8	1.6	12.4	24.5	18.9	19.1	14.1	5.9	13.1	42.2
	JUN	JUN	-5.6	-7.8	11.8	-11.0	3.6	18.5	-12.5	-11.2	-7.5	-1.0	5.0
	JUL	JUL	1.8	3.9	1.9	1.7	-12.0	2.4	3.0	5.2	7.8	7.4	-20.4
	OGOS	AUG	-2.6	-3.1	-2.6	0.8	-17.1	-1.3	-3.0	-2.8	3.3	-2.9	19.4
	SEP	SEP	0.7	5.5	-0.9	8.2	-6.0	-46.9	0.9	7.5	1.6	2.2	-7.9
	OKT	OCT	12.7	8.6	11.0	9.9	42.2	24.2	9.0	0.9	6.1	3.8	37.0
	NOV	NOV	-2.6	-3.3	-16.2	-7.6	-15.3	-17.7	-1.3	1.1	2.3	9.8	-32.1
	DIS <sup>P</sup>	DEC <sup>P</sup>	-1.6	2.1	1.0	2.8	1.5	27.6	-6.3	3.2	-3.8	-1.2	-10.8

**MALAYSIA**  
**JADUAL 4C : PERATUS PERUBAHAN TAHUN KE TAHUN INDEKS VOLUM BAGI IMPORT (2010=100) MENGIKUT SEKSYEN BARANGAN (S.I.T.C.)**  
**TABLE 4C : YEAR-ON-YEAR PERCENTAGE CHANGE IMPORT VOLUME INDICES (2010=100) BY COMMODITY SECTION (S.I.T.C.)**

TEMPOH PERIOD	JUMLAH TOTAL	0 MAKANAN FOOD	1 MINUMAN DAN TEBAKAU BEVERAGES AND TOBACCO	2 BAHAN-BAHAN MENTAH TIDAK BOLEH DIMAKAN CRUDE MATERIALS, INEDIBLE	3 BAHAN-API GALIAN, PELINCIR, DLL. MINERAL FUELS, LUBRICANTS, ETC.	4 MINYAK DAN LEMAK BINATANG DAN SAYUR- SAYURAN ANIMAL AND VEGETABLE OILS AND FATS	5 BAHAN KIMIA CHEMICALS	6 BARANG-BARANG KELUARAN KILANG MANUFACTURED GOODS	7 JENTERA & KELENGKAPAN PENGANGKUTAN MACHINERY & TRANSPORT EQUIPMENT	8 PELBAGAI BARANG KELUARAN KILANG MISCELLANEOUS MANUFACTURED ARTICLES	9 PELBAGAI URUS NIAGA DAN BARANGAN MISCELLANEOUS TRANSACTIONS AND COMMODITIES		
2011	2.8	6.7	29.4	20.9	2.3	19.1	10.6	12.1	-4.2	10.6	3.5		
2012	4.4	2.4	23.0	3.8	22.3	1.5	0.8	0.3	2.5	2.8	-4.5		
2013	6.6	5.0	5.9	-2.4	23.8	-45.7	10.5	13.4	1.8	-2.2	31.7		
2014	4.3	5.9	-1.2	-7.2	10.9	-6.0	10.8	2.5	1.6	11.4	2.4		
2015	1.1	2.9	12.1	0.8	0.0	60.2	3.7	2.1	0.5	19.2	-9.3		
2016	0.6	2.1	-2.2	14.1	5.5	-33.9	5.4	-0.5	1.4	4.0	-26.2		
2017	12.9	0.8	-21.6	16.5	12.6	-1.6	12.5	6.2	15.7	7.5	33.5		
2018	3.1	-4.7	0.9	15.4	-3.0	16.0	8.0	3.3	3.0	0.7	-0.3		
2019	-3.1	0.1	-4.8	14.6	8.5	10.2	-2.5	-4.3	-8.2	-1.2	-17.8		
2020	-2.8	5.3	-30.6	-2.2	4.4	16.0	-7.7	-7.8	-0.9	-5.7	-17.7		
2021	18.6	12.1	-1.4	29.2	5.0	13.6	27.2	11.8	20.7	16.5	67.6		
2022	19.1	15.6	37.0	-10.5	22.5	-14.1	19.7	16.9	22.0	23.7	-6.5		
17													
2021	DIS	DEC	14.2	20.6	7.5	1.3	-7.2	-57.2	23.5	17.0	25.0	13.2	-11.8
2022	JAN	JAN	18.7	38.4	28.6	1.1	-3.2	-44.2	38.6	20.7	26.8	21.9	-38.0
	FEB	FEB	10.3	8.1	7.1	-17.7	-12.0	25.6	28.2	8.2	19.5	13.7	-40.7
	MAC	MAR	19.5	13.5	64.9	-2.4	45.0	-2.2	22.7	17.8	24.8	27.2	-72.9
	APR	APR	10.3	1.7	6.9	22.0	-22.4	-3.9	25.7	14.8	22.6	7.8	-47.1
	MEI	MAY	21.7	27.4	7.0	-8.8	11.4	-23.8	18.0	13.6	34.1	14.1	77.3
	JUN	JUN	27.6	10.2	12.3	-5.5	17.6	-39.9	25.3	34.4	34.2	29.0	182.1
	JUL	JUL	25.6	13.9	68.9	-40.4	26.4	-1.7	29.0	33.6	26.3	32.9	237.5
	OGOS	AUG	52.5	36.8	66.2	11.6	150.2	2.4	32.7	31.1	37.3	52.9	90.8
	SEP	SEP	20.4	11.2	58.0	-16.2	28.3	18.0	17.2	24.7	21.6	22.3	10.0
	OKT	OCT	17.1	20.2	72.1	-20.0	39.9	-40.7	10.9	6.6	16.8	21.1	-30.4
	NOV	NOV	5.8	12.5	47.0	-11.7	0.0	-34.2	0.4	3.7	8.6	26.2	1.7
	DIS	DEC	5.2	0.6	21.6	-24.3	47.4	3.4	-2.6	-0.7	0.2	18.8	-22.5
2023	JAN	JAN	-3.1	-11.0	16.0	-30.0	28.5	8.4	-10.9	-6.8	-5.1	2.3	-31.4
	FEB	FEB	7.5	13.3	41.7	-21.5	58.7	-44.7	-1.7	-0.8	-1.5	-2.1	36.8
	MAC	MAR	-4.5	10.3	-38.0	-8.3	-6.8	-51.5	-7.1	0.9	-4.5	-4.7	2.8
	APR	APR	-10.4	5.7	15.1	-41.9	7.5	-44.6	-17.8	-10.9	-11.0	-15.0	-22.1
	MEI	MAY	0.0	0.3	16.1	-13.7	42.3	-18.0	4.4	6.6	-11.4	-7.4	-43.9
	JUN	JUN	-14.7	-5.3	8.5	-26.7	15.6	-13.8	-20.4	-22.5	-20.4	-15.2	-37.5
	JUL	JUL	-11.0	-1.0	-9.6	-9.9	-4.9	-33.3	-11.7	-5.1	-11.0	-9.1	-48.8
	OGOS	AUG	-18.9	-12.8	-13.7	-19.9	-38.0	-29.8	-16.1	-2.9	-10.0	-19.2	-23.4
	SEP	SEP	-9.7	1.2	1.5	-7.3	-17.0	-65.1	-9.4	7.2	-8.5	-3.1	-43.0
	OKT	OCT	1.3	4.9	10.2	12.7	0.1	-17.9	6.0	22.1	-3.6	1.2	11.7
	NOV	NOV	3.8	3.6	-16.0	-12.5	18.9	-43.7	2.9	12.1	1.5	-4.3	-22.4
	DIS <sup>P</sup>	DEC <sup>P</sup>	3.4	10.1	-18.0	6.1	7.6	-38.3	-2.4	10.8	3.2	-4.4	-14.5

**MALAYSIA**  
**JADUAL 5A : TERMA PERDAGANGAN (2010=100) MENGIKUT SEKSYEN BARANGAN (S.I.T.C)**  
**TABLE 5A: TERMS OF TRADE (2010=100) BY COMMODITY SECTION (S.I.T.C.)**

TEMPOH PERIOD	JUMLAH TOTAL	0 MAKANAN FOOD	1 MINUMAN DAN TEBAKAU BEVERAGES AND TOBACCO	2 BAHAN-BAHAN BOLEH DIMAKAN MENTAH TIDAK CRUDE MATERIALS, INEDIBLE	3 BAHAN API GALIAN, PELINCIR, DLL. MINERAL FUELS, LUBRICANTS, ETC.	4 MINYAK DAN LEMAK BINATANG DAN SAYUR-SAYURAN ANIMAL AND VEGETABLE OILS AND FATS	5 BAHAN KIMIA CHEMICALS	6 BARANG- BARANG KELUARAN KILANG MANUFACTURED GOODS	7 JENTERA & KELENGKAPAN PENGANGKUTAN MACHINERY & TRANSPORT EQUIPMENT	8 PELBAGAI BARANG KELUARAN KILANG MISCELLANEOUS MANUFACTURED ARTICLES	9 PELBAGAI URUS NIAGA DAN BARANGAN MISCELLANEOUS TRANSACTIONS AND COMMODITIES		
2010	100.0	100.0	100.0	100.0	100.0	100.0	100.0	100.0	100.0	100.0	100.0		
2011	105.5	103.8	99.4	118.7	103.5	95.1	110.7	105.7	100.2	104.4	93.6		
2012	105.1	103.2	100.7	106.3	108.6	103.3	108.4	97.0	101.3	105.0	106.8		
2013	103.0	102.0	99.7	94.4	108.7	108.8	109.0	94.1	100.2	105.5	114.1		
2014	103.2	101.0	100.4	85.1	112.1	98.8	115.1	94.8	98.5	106.3	125.4		
2015	99.7	102.6	105.0	81.2	107.2	95.6	123.0	97.8	98.2	109.4	108.5		
2016	96.4	107.4	109.7	81.9	100.3	86.8	129.6	98.8	94.0	108.7	108.2		
2017	97.4	105.3	113.9	80.0	96.6	78.0	138.8	98.6	93.3	109.8	116.1		
2018	97.1	105.9	118.4	79.3	92.5	77.5	140.8	98.2	93.2	112.6	126.5		
2019	98.2	106.0	124.0	78.9	103.0	79.4	139.3	95.0	93.9	114.6	109.4		
2020	98.7	107.0	126.2	78.2	105.4	84.6	140.8	94.4	95.8	115.3	81.6		
2021	104.6	108.6	128.6	75.7	112.6	84.6	145.9	94.8	98.8	117.3	87.8		
2022	111.5	110.2	132.8	76.9	116.0	68.9	156.4	97.3	104.0	115.7	150.3		
2021	DIS	DEC	107.1	108.7	131.3	76.9	113.5	77.2	150.1	94.9	100.2	116.9	101.7
2022	JAN	JAN	109.1	108.8	131.1	77.1	121.4	73.0	151.5	95.6	101.9	116.6	100.8
	FEB	FEB	109.9	109.1	131.2	77.1	120.4	73.7	152.0	96.2	102.4	116.3	105.1
	MAC	MAR	112.4	108.9	131.2	77.5	124.6	76.0	153.2	96.7	102.7	115.7	120.6
	APR	APR	110.9	108.9	131.7	77.3	109.5	77.2	154.6	97.6	103.0	115.7	116.8
	MEI	MAY	112.1	109.4	131.5	77.1	108.2	73.3	156.8	97.9	103.6	116.3	142.8
	JUN	JUN	110.7	109.9	131.7	76.8	100.5	76.3	157.0	97.7	103.8	116.1	159.0
	JUL	JUL	112.2	110.2	133.0	77.1	105.6	78.4	157.8	97.7	104.0	116.1	148.4
	OGOS	AUG	111.9	110.9	132.6	77.0	115.6	66.7	157.9	97.2	104.0	115.9	171.0
	SEP	SEP	113.0	111.0	134.1	77.1	124.3	60.7	158.5	97.3	104.2	115.8	169.6
	OKT	OCT	112.4	111.3	134.4	76.6	124.0	58.1	158.7	97.7	104.5	114.8	192.2
	NOV	NOV	111.6	111.8	134.8	75.9	120.0	54.3	159.0	98.0	105.8	114.9	174.3
	DIS	DEC	111.6	111.8	136.2	76.3	117.9	59.2	159.3	97.5	107.6	114.2	202.9
2023	JAN	JAN	111.5	111.6	136.9	76.8	119.1	59.1	159.4	97.9	108.5	114.3	160.2
	FEB	FEB	109.7	111.6	137.2	76.9	113.6	56.8	160.0	97.4	106.6	113.8	193.4
	MAC	MAR	110.3	112.3	137.1	77.3	112.2	56.9	161.3	97.6	107.6	114.4	249.3
	APR	APR	110.7	112.6	137.1	78.2	107.2	55.9	161.6	97.4	111.8	114.4	218.6
	MEI	MAY	110.8	112.8	137.7	78.9	112.2	55.8	162.1	98.2	110.5	114.1	188.0
	JUN	JUN	110.4	114.4	138.0	79.9	110.7	52.7	161.6	98.6	110.2	114.7	233.9
	JUL	JUL	111.0	114.0	135.7	80.5	109.3	50.9	161.1	98.6	113.1	116.0	204.8
	OGOS	AUG	110.5	114.0	135.4	80.5	107.3	46.2	161.0	98.3	112.4	114.9	232.8
	SEP	SEP	110.7	114.2	135.6	79.8	105.0	46.3	162.2	98.2	112.1	115.8	267.2
	OKT	OCT	111.5	114.7	135.8	79.7	109.0	46.5	162.1	98.6	111.6	114.9	292.2
	NOV	NOV	114.5	115.1	135.8	80.6	124.6	47.3	162.5	98.3	110.6	114.8	281.5
	DIS <sup>P</sup>	DEC <sup>P</sup>	114.6	116.1	136.6	81.3	127.3	46.8	162.5	98.0	111.1	115.3	251.0

**MALAYSIA**  
**JADUAL 5B : PERATUS PERUBAHAN BULAN KE BULAN TERMA PERDAGANGAN (2010=100) MENGIKUT SEKSYEN BARANGAN (S.I.T.C.)**  
**TABLE 5B: MONTH-ON-MONTH PERCENTAGE CHANGE OF TERMS OF TRADE (2010=100) BY COMMODITY SECTION (S.I.T.C.)**

TEMPOH PERIOD		JUMLAH TOTAL	0 MAKANAN FOOD	1 MINUMAN DAN TEBAKAU BEVERAGES AND TOBACCO	2 BAHAN-BAHAN MENTAH TIDAK BOLEH DIMAKAN CRUDE MATERIALS, INEDIBLE	3 BAHAN API GALIAN, PELINCIR, DLL. MINERAL FUELS, LUBRICANTS, ETC.	4 MINYAK DAN LEMAK BINATANG DAN SAYUR-SAYURAN ANIMAL AND VEGETABLE OILS AND FATS	5 BAHAN KIMIA CHEMICALS	6 BARANG-BARANG KELUARAN KILANG MANUFACTURED GOODS	7 JENTERA & KELENGKAPAN PENGANGKUTAN MACHINERY & TRANSPORT EQUIPMENT	8 PELBAGAI BARANG KELUARAN KILANG MISCELLANEOUS MANUFACTURED ARTICLES	9 PELBAGAI URUS NIAGA DAN BARANGAN MISCELLANEOUS TRANSACTIONS AND COMMODITIES	
2021	DIS	DEC	0.0	0.1	0.5	0.8	-0.6	-3.4	0.4	0.1	0.3	0.1	8.7
2022	JAN	JAN	1.9	0.0	-0.1	0.3	7.0	-5.5	0.9	0.8	1.7	-0.3	-0.8
	FEB	FEB	0.8	0.3	0.0	-0.1	-0.9	1.0	0.3	0.5	0.6	-0.2	4.3
	MAC	MAR	2.3	-0.1	0.0	0.6	3.5	3.0	0.8	0.6	0.2	-0.6	14.7
	APR	APR	-1.3	0.0	0.3	-0.4	-12.1	1.6	0.9	0.9	0.3	0.0	-3.1
	MEI	MAY	1.1	0.4	-0.1	-0.1	-1.2	-5.0	1.5	0.4	0.6	0.6	22.3
	JUN	JUN	-1.3	0.4	0.1	-0.4	-7.1	4.1	0.1	-0.2	0.2	-0.2	11.3
	JUL	JUL	1.3	0.3	1.0	0.4	5.0	2.8	0.5	0.0	0.2	-0.1	-6.7
	OGOS	AUG	-0.2	0.6	-0.3	-0.1	9.5	-14.8	0.1	-0.5	-0.1	-0.1	15.2
	SEP	SEP	1.0	0.0	1.2	0.1	7.6	-9.0	0.4	0.1	0.2	-0.1	-0.8
	OKT	OCT	-0.6	0.3	0.2	-0.7	-0.2	-4.4	0.1	0.4	0.3	-0.9	13.3
	NOV	NOV	-0.7	0.5	0.3	-0.9	-3.2	-6.5	0.2	0.4	1.3	0.1	-9.3
DIS	DEC	0.0	-0.1	1.0	0.6	-1.8	9.0	0.2	-0.5	1.6	-0.7	16.4	
2023	JAN	JAN	-0.1	-0.1	0.5	0.6	1.1	-0.1	0.1	0.4	0.9	0.1	-21.0
	FEB	FEB	-1.6	0.0	0.3	0.2	-4.6	-4.0	0.3	-0.6	-1.8	-0.4	20.7
	MAC	MAR	0.6	0.6	-0.1	0.4	-1.3	0.2	0.8	0.3	1.0	0.5	28.9
	APR	APR	0.4	0.3	0.0	1.3	-4.5	-1.7	0.2	-0.2	3.9	0.0	-12.3
	MEI	MAY	0.1	0.2	0.4	0.8	4.7	-0.2	0.3	0.9	-1.1	-0.3	-14.0
	JUN	JUN	-0.4	1.4	0.2	1.4	-1.3	-5.5	-0.3	0.3	-0.3	0.5	24.4
	JUL	JUL	0.6	-0.3	-1.6	0.8	-1.2	-3.5	-0.3	0.0	2.7	1.1	-12.5
	OGOS	AUG	-0.5	0.0	-0.2	-0.1	-1.9	-9.2	-0.1	-0.3	-0.6	-0.9	13.7
	SEP	SEP	0.2	0.2	0.1	-0.8	-2.1	0.1	0.8	-0.1	-0.3	0.8	14.8
	OKT	OCT	0.7	0.4	0.2	-0.2	3.8	0.5	-0.1	0.4	-0.5	-0.7	9.4
	NOV	NOV	2.7	0.4	0.0	1.2	14.3	1.7	0.3	-0.3	-0.9	-0.1	-3.7
	DIS <sup>p</sup>	DEC <sup>p</sup>	0.1	0.9	0.6	0.8	2.2	-1.0	0.03	-0.3	0.5	0.4	-10.8

**MALAYSIA**  
**JADUAL 5C : PERATUS PERUBAHAN TAHUN KE TAHUN TERMA PERDAGANGAN (2010=100) MENGIKUT SEKSYEN BARANGAN (S.I.T.C.)**  
**TABLE 5C: YEAR-ON-YEAR PERCENTAGE CHANGE OF TERMS OF TRADE (2010=100) BY COMMODITY SECTION (S.I.T.C.)**

TEMPOH PERIOD	JUMLAH TOTAL	0 MAKANAN FOOD	1 MINUMAN DAN TEMBAKAU BEVERAGES AND TOBACCO	2 BAHAN-BAHAN MENTAH TIDAK BOLEH DIMAKAN CRUDE MATERIALS, INEDIBLE	3 BAHAN API GALIAN, PELINCIR, DLL. MINERAL FUELS, LUBRICANTS, ETC.	4 MINYAK DAN LEMAK BINATANG DAN SAYUR-SAYURAN ANIMAL AND VEGETABLE OILS AND FATS	5 BAHAN KIMIA CHEMICALS	6 BARANG-BARANG KELUARAN KILANG MANUFACTURED GOODS	7 JENTERA & KELENGKAPAN PENGANGKUTAN MACHINERY & TRANSPORT EQUIPMENT	8 PELBAGAI BARANG KELUARAN KILANG MISCELLANEOUS MANUFACTURED ARTICLES	9 PELBAGAI URUS NIAGA DAN BARANGAN MISCELLANEOUS TRANSACTIONS AND COMMODITIES		
2011	5.5	3.8	-0.7	18.7	3.5	-4.9	10.6	5.7	0.2	4.4	-6.5		
2012	-0.3	-0.6	1.3	-10.4	4.8	8.6	-2.0	-8.2	1.2	0.5	14.2		
2013	-2.0	-1.2	-1.0	-11.2	0.2	5.3	0.5	-3.0	-1.2	0.5	6.8		
2014	0.2	-0.9	0.7	-9.8	3.1	-9.2	5.6	0.8	-1.7	0.7	9.9		
2015	-3.4	1.6	4.6	-4.6	-4.4	-3.3	6.9	3.1	-0.3	2.9	-13.5		
2016	-3.3	4.7	4.5	0.8	-6.4	-9.2	5.4	1.0	-4.3	-0.6	-0.2		
2017	1.1	-1.9	3.8	-2.2	-3.7	-10.2	7.1	-0.2	-0.8	1.0	7.3		
2018	-0.4	0.6	4.0	-0.9	-4.2	-0.7	1.4	-0.3	-0.1	2.5	9.0		
2019	1.1	0.0	4.7	-0.5	11.3	2.5	-1.1	-3.3	0.8	1.8	-13.5		
2020	0.5	1.0	1.8	-0.9	2.4	6.5	1.1	-0.7	2.0	0.6	-25.4		
2021	6.0	1.5	1.9	-3.2	6.8	-0.1	3.6	0.5	3.1	1.7	7.5		
2022	6.6	1.5	3.3	1.6	3.0	-18.5	7.1	2.6	5.2	-1.4	71.2		
2021	DIS	DEC	6.9	0.3	3.6	1.3	1.8	-6.0	5.4	0.5	3.6	0.6	28.3
2022	JAN	JAN	7.9	0.2	3.2	1.2	8.2	-13.0	6.1	1.2	5.2	0.1	29.9
	FEB	FEB	8.3	0.3	3.1	0.7	10.0	-14.0	6.2	1.7	5.7	-0.3	29.4
	MAC	MAR	9.4	0.2	2.9	2.8	10.1	-10.2	6.4	2.0	5.5	-1.2	37.4
	APR	APR	7.0	0.4	2.9	3.7	-5.0	-10.9	7.0	2.8	5.4	-1.8	35.2
	MEI	MAY	8.3	0.7	2.7	2.9	-0.7	-16.0	8.3	3.5	5.5	-1.4	69.2
	JUN	JUN	5.5	1.3	2.9	2.9	-12.6	-11.9	8.2	3.2	4.9	-1.5	83.9
	JUL	JUL	6.8	1.6	4.0	2.4	-7.1	-7.8	8.9	3.2	4.8	-1.4	71.4
	OGOS	AUG	6.0	2.3	3.2	1.6	3.6	-21.4	7.9	2.1	3.8	-1.6	97.1
	SEP	SEP	6.8	2.2	3.9	1.6	11.5	-29.1	7.7	2.4	4.0	-1.4	91.7
	OKT	OCT	5.3	2.5	3.4	0.7	9.6	-33.4	6.8	2.7	4.6	-1.8	107.8
	NOV	NOV	4.3	2.9	3.2	-0.5	5.1	-32.1	6.3	3.4	5.9	-1.6	86.2
	DIS	DEC	4.2	2.8	3.7	-0.8	3.9	-23.4	6.1	2.7	7.3	-2.4	99.6
2023	JAN	JAN	2.2	2.6	4.4	-0.5	-1.9	-19.0	5.2	2.4	6.5	-2.0	58.9
	FEB	FEB	-0.2	2.3	4.6	-0.2	-5.6	-23.0	5.2	1.3	4.0	-2.2	84.0
	MAC	MAR	-1.9	3.1	4.5	-0.4	-10.0	-25.2	5.2	0.9	4.8	-1.1	106.8
	APR	APR	-0.2	3.4	4.2	1.3	-2.1	-27.6	4.6	-0.2	8.5	-1.1	87.2
	MEI	MAY	-1.2	3.1	4.7	2.2	3.7	-23.9	3.3	0.3	6.6	-1.9	31.7
	JUN	JUN	-0.3	4.1	4.8	4.1	10.1	-30.9	2.9	0.9	6.1	-1.3	47.1
	JUL	JUL	-1.0	3.5	2.1	4.4	3.6	-35.1	2.1	0.9	8.8	-0.1	38.0
	OGOS	AUG	-1.3	2.8	2.1	4.5	-7.2	-30.8	2.0	1.0	8.1	-0.9	36.1
	SEP	SEP	-2.1	2.9	1.1	3.5	-15.5	-23.8	2.3	0.9	7.7	0.0	57.5
	OKT	OCT	-0.8	3.0	1.1	4.1	-12.1	-19.9	2.2	0.9	6.8	0.1	52.0
	NOV	NOV	2.6	2.9	0.7	6.2	3.8	-12.9	2.2	0.2	4.5	-0.1	61.5
	DIS <sup>p</sup>	DEC <sup>p</sup>	2.7	3.9	0.3	6.5	8.0	-20.9	2.1	0.5	3.3	1.0	23.7

20

**JADUAL 6 : INDEKS VOLUM EKSPORT - ASAL & PELARASAN MUSIM (2010=100)**  
**TABLE 6 : EXPORT VOLUME INDICES - ACTUAL & SEASONALLY ADJUSTED (2010=100)**

TEMPOH PERIOD			ASAL ACTUAL	% PERUBAHAN BULAN KE BULAN % CHANGE MONTH-ON-MONTH	PELARASAN MUSIM SEASONALLY ADJUSTED	% PERUBAHAN BULAN KE BULAN % CHANGE MONTH-ON-MONTH
2020	DIS	DEC	159.5	12.0	153.8	7.5
2021	JAN	JAN	146.8	-7.9	142.0	-7.7
	FEB	FEB	142.0	-3.3	157.2	10.7
	MAC	MAR	166.6	17.3	153.2	-2.6
	APR	APR	164.4	-1.3	152.9	-0.2
	MEI	MAY	142.7	-13.2	143.1	-6.4
	JUN	JUN	159.8	11.9	156.2	9.2
	JUL	JUL	145.4	-9.0	134.9	-13.6
	OGOS	AUG	140.7	-3.2	139.9	3.7
	SEP	SEP	164.0	16.5	152.9	9.2
	OKT	OCT	167.0	1.9	144.7	-5.3
	NOV	NOV	162.2	-2.9	152.2	5.2
	DIS	DEC	178.8	10.2	154.4	1.4
2022	JAN	JAN	157.5	-11.9	155.6	0.8
	FEB	FEB	141.3	-10.2	159.1	2.3
	MAC	MAR	174.6	23.6	170.0	6.9
	APR	APR	167.6	-4.1	162.1	-4.7
	MEI	MAY	152.5	-9.0	158.2	-2.4
	JUN	JUN	181.9	19.3	188.6	19.2
	JUL	JUL	166.7	-8.4	162.4	-13.9
	OGOS	AUG	179.5	7.7	189.1	16.4
	SEP	SEP	181.1	0.9	179.4	-5.1
	OKT	OCT	165.8	-8.5	153.8	-14.3
	NOV	NOV	164.0	-1.1	166.1	8.0
	DIS	DEC	171.2	4.4	160.9	-3.1
2023	JAN	JAN	148.5	-13.3	149.8	-6.9
	FEB	FEB	149.6	0.7	167.5	11.8
	MAC	MAR	171.1	14.4	165.1	-1.4
	APR	APR	139.4	-18.5	136.3	-17.4
	MEI	MAY	158.6	13.8	170.1	24.8
	JUN	JUN	164.4	3.7	157.7	-7.3
	JUL	JUL	155.1	-5.7	155.8	-1.2
	OGOS	AUG	152.0	-2.0	161.1	3.4
	SEP	SEP	161.7	6.4	154.3	-4.2
	OKT	OCT	162.1	0.2	155.8	0.9
	NOV	NOV	153.3	-5.4	155.4	-0.25
	DIS <sup>P</sup>	DEC <sup>P</sup>	150.6	-1.8	140.9	-9.32

**JADUAL 7 : INDEKS VOLUM IMPORT - ASAL & PELARASAN MUSIM (2010=100)**  
**TABLE 7 : IMPORT VOLUME INDICES - ACTUAL & SEASONALLY ADJUSTED (2010=100)**

TEMPOH PERIOD			ASAL ACTUAL	% PERUBAHAN BULAN KE BULAN % CHANGE MONTH-ON-MONTH	PELARASAN MUSIM SEASONALLY ADJUSTED	% PERUBAHAN BULAN KE BULAN % CHANGE MONTH-ON-MONTH
<b>2020</b>	<b>DIS</b>	<i>DEC</i>	151.5	10.6	146.5	9.7
<b>2021</b>	<b>JAN</b>	<i>JAN</i>	146.3	-3.4	143.5	-2.0
	<b>FEB</b>	<i>FEB</i>	138.4	-5.4	154.6	7.7
	<b>MAC</b>	<i>MAR</i>	159.1	15.0	159.3	3.0
	<b>APR</b>	<i>APR</i>	166.6	4.7	160.9	1.0
	<b>MEI</b>	<i>MAY</i>	152.0	-8.8	152.2	-5.4
	<b>JUN</b>	<i>JUN</i>	160.3	5.5	167.4	10.0
	<b>JUL</b>	<i>JUL</i>	159.0	-0.9	155.9	-6.9
	<b>OGOS</b>	<i>AUG</i>	140.0	-11.9	139.5	-10.5
	<b>SEP</b>	<i>SEP</i>	160.4	14.6	162.4	16.4
	<b>OKT</b>	<i>OCT</i>	165.5	3.2	162.4	0.0
	<b>NOV</b>	<i>NOV</i>	174.2	5.2	169.5	4.4
	<b>DIS</b>	<i>DEC</i>	173.0	-0.7	166.8	-1.6
<b>2022</b>	<b>JAN</b>	<i>JAN</i>	173.7	0.4	170.2	2.1
	<b>FEB</b>	<i>FEB</i>	152.6	-12.2	170.5	0.1
	<b>MAC</b>	<i>MAR</i>	190.2	24.6	190.5	11.7
	<b>APR</b>	<i>APR</i>	183.8	-3.4	177.0	-7.1
	<b>MEI</b>	<i>MAY</i>	185.0	0.7	185.6	4.8
	<b>JUN</b>	<i>JUN</i>	204.6	10.6	213.5	15.1
	<b>JUL</b>	<i>JUL</i>	199.6	-2.4	195.8	-8.3
	<b>OGOS</b>	<i>AUG</i>	213.5	6.9	213.4	9.0
	<b>SEP</b>	<i>SEP</i>	193.1	-9.6	195.5	-8.4
	<b>OKT</b>	<i>OCT</i>	193.9	0.4	189.6	-3.0
	<b>NOV</b>	<i>NOV</i>	184.3	-5.0	179.7	-5.3
	<b>DIS</b>	<i>DEC</i>	182.1	-1.2	175.3	-2.4
<b>2023</b>	<b>JAN</b>	<i>JAN</i>	168.3	-7.6	165.6	-5.6
	<b>FEB</b>	<i>FEB</i>	164.6	-2.2	184.2	11.2
	<b>MAC</b>	<i>MAR</i>	181.6	10.3	175.6	-4.6
	<b>APR</b>	<i>APR</i>	164.6	-9.4	157.6	-10.3
	<b>MEI</b>	<i>MAY</i>	185.0	12.4	186.5	18.4
	<b>JUN</b>	<i>JUN</i>	174.6	-5.6	174.8	-6.3
	<b>JUL</b>	<i>JUL</i>	177.7	1.8	174.2	-0.3
	<b>OGOS</b>	<i>AUG</i>	173.1	-2.6	170.4	-2.2
	<b>SEP</b>	<i>SEP</i>	174.3	0.7	178.4	4.7
	<b>OKT</b>	<i>OCT</i>	196.5	12.7	197.0	10.4
	<b>NOV</b>	<i>NOV</i>	190.6	-3.0	188.1	-4.5
	<b>DIS<sup>p</sup></b>	<i>DEC<sup>p</sup></i>	187.5	-1.6	188.4	0.2



### **3. NOTA TEKNIKAL**

*TECHNICAL NOTES*

## NOTA TEKNIKAL

### 1. PENGENALAN

- 1.1 Indeks Perdagangan Luar Negeri (IPLN) mengukur perubahan paras nilai seunit serta volum eksport dan import barangan Malaysia. Indeks ini mencerminkan peratusan kenaikan atau penurunan dalam paras nilai seunit dan volum.
- 1.2 IPLN telah disusun buat kali pertama dengan menggunakan tahun 1970 sebagai tahun asas (1970=100) dan seterusnya diikuti dengan 1999=100, 2005=100 dan 2010 =100 mulai penerbitan bagi bulan rujukan Januari 2016.
- 1.3 Mulai penerbitan keluaran bulan rujukan Januari 2018, IPLN telah dikemaskini menggunakan "bakul" barangan tahun 2013 dengan mengekalkan tahun asas yang sama, 2010=100. Seterusnya, IPLN (2010=100) dikemaskini sekali lagi menggunakan "bakul" barangan tahun 2015 bermula daripada penerbitan bulan rujukan Januari 2019.

### 2. OBJEKTIF

- 2.1 Indeks nilai seunit dan volum adalah penunjuk ekonomi utama yang mempunyai pelbagai kegunaan.
- 2.2 Berikut adalah kegunaan utama indeks ini:
  - 2.2.1 Ia mengukur setakat mana perubahan nilai eksport dan import adalah disebabkan oleh perubahan dalam nilai seunit dan perubahan volum.
  - 2.2.2 Ia membolehkan penggubal dasar menilai kesan harga eksport berbanding dengan harga import barangan (yang mana lebih dikenali sebagai terma perdagangan).
  - 2.2.3 Ia boleh digunakan untuk membuat unjuran untuk memastikan perubahan harga, output dan sebagainya yang mungkin berlaku pada masa depan. Perbandingan dan unjuran ini akan memudahkan keputusan dibuat di peringkat syarikat, industri dan kerajaan.
  - 2.2.4 Ia juga dapat mengukur perubahan nilai benar import dan eksport Malaysia mengikut masa dengan menggunakan kaedah "*deflation*".

### 3. SUMBER DATA

Data yang digunakan dalam pengiraan indeks nilai seunit dan volum diperoleh daripada data perdagangan luar negeri Malaysia yang sebahagian besarnya diproses daripada borang pengiklanan kastam.

### 4. PROSEDUR PENGIRAAN

- 4.1 Prosedur yang digunakan untuk menghasilkan Indeks Nilai Seunit adalah seperti berikut:
  - i. Mengira nilai seunit bagi setiap barangan SITC yang terpilih;
  - ii. Mengira nilai seunit relatif;
  - iii. Mengira wajaran nilai;
  - iv. Mendarab setiap relatif dengan wajaran yang berkaitan;
  - v. Menjumlahkan hasil darab;
  - vi. Membahagikan hasil darab dengan jumlah wajaran.

- 4.2 Indeks nilai seunit relatif purata aritmetik yang berwajarkan nilai tempoh asas adalah bersamaan dengan indeks nilai seunit Laspeyres.

$$p^L = \frac{\sum p_n (p_o q_o)}{\sum (p_o q_o)} \times 100$$

di mana

$p^L$	=	Indeks nilai seunit Laspeyres;
$p_n$	=	Nilai seunit barangan pada tempoh tertentu;
$p_o$	=	Nilai seunit barangan pada tempoh asas;
$p_o q_o$	=	Wajaran tahun asas

- 4.3 Indeks volum eksport dan import adalah dihasilkan secara tidak langsung daripada pembahagian indeks nilai eksport dan import dengan indeks nilai seunit eksport dan import yang berkaitan. Dalam kes ini, indeks volum yang dibentuk adalah indeks volum Paasche.

- 4.4 Berkuatkuasa mulai penerbitan bulan rujukan Januari 2019, kaedah indeks rantaian Laspeyres akan digunakan dalam pengiraan IPLN (2010=100) dengan menggunakan Disember 2018 sebagai bulan pautan.

IPLN dihitung sebagai indeks rantaian bakul tetap. Ini bermakna bahawa urutan indeks bakul tetap dirantai bersama untuk mewujudkan satu siri masa yang berterusan. Perkara ini perlu untuk mengelakkan perubahan yang tidak dijangka dalam indeks apabila pengemaskinian bakul dilakukan.

Indeks nilai seunit bulan rujukan dihitung berdasarkan perubahan indeks bulan tersebut kepada bulan pautan (bakul baru) didarabkan dengan indeks bulan pautan (bakul lama).

$$P_{t/10}^{ch} = P_{t/D18}^{baru} \times P_{D18/10}^{lama}$$

di mana,

$P_{t/10}^{ch}$	=	Indeks rantaian yang mengukur perubahan nilai seunit dari 2010 kepada sebarang tempoh t
$P_{t/D18}^{baru}$	=	Indeks komposit siri baru yang membandingkan nilai seunit pada sebarang tempoh t kepada bulan pautan
$P_{D18/10}^{lama}$	=	Indeks komposit siri lama yang membandingkan nilai seunit bagi Disember 2018 kepada nilai seunit 2010

- 4.5 Dalam pengiraan indeks, tarif individu telah dikelaskan mengikut *Standard International Trade Classification, Revision 4 (S.I.T.C. Rev 4)* daripada Pertubuhan Bangsa-Bangsa Bersatu.
- 4.6 Indeks import menggunakan nilai 'kos, insuran dan tambang' (*c.i.f.*), sementara indeks eksport dikira menggunakan nilai 'free on board' (*f.o.b.*).
- 4.7 Indeks ini disusun dengan menggunakan tahun 2010 sebagai asas. Siri indeks adalah seperti berikut:

i	Indeks nilai seunit eksport
ii	Indeks volum eksport
iii	Indeks nilai seunit import
iv	Indeks volum import
v	Indeks terma perdagangan

4.8 Indeks ini disusun setiap bulan manakala indeks tahunan dikira berdasarkan data siri bulanan.

4.9 Indeks ini akan disebarakan di peringkat SITC-1-digit dan Malaysia.

## 5. LIPUTAN

Sebanyak 786 barangan eksport yang mewakili kira-kira 84.4 peratus daripada jumlah nilai eksport yang dicatatkan pada tahun 2015 dan 1,583 barangan import yang meliputi kira-kira 83.0 peratus daripada jumlah nilai import tahun 2015 masing-masing digunakan dalam pengiraan indeks import dan eksport.

## 6. WAJARAN

Wajaran yang digunakan dalam jenis indeks ini adalah nilai. Data yang digunakan untuk menghasilkan wajaran ini adalah daripada nilai import dan eksport barang dagangan Malaysia tahun 2015. Wajaran yang diagihkan adalah mengikut nilai tersebut pada peringkat SITC-1-digit.

## 7. KONSEP DAN DEFINISI

### 7.1 Indeks Nilai Seunit

Perubahan harga dalam perdagangan barangan luar negeri ditunjukkan oleh perubahan indeks nilai seunit perdagangan barangan luar negeri yang disusun berdasarkan nilai seunit.

Jadual 1A, 1B dan 1C menyediakan ringkasan perubahan nilai seunit eksport dan Jadual 3A, 3B dan 3C pula, indeks nilai seunit import. Arah aliran komponen nilai seunit adalah ditunjukkan dalam indeks ini, yang mana menyatakan hubungan di antara nilai tempoh semasa dan tempoh asas bagi sesuatu bakul yang mengandungi volum barangan tertentu.

### 7.2 Indeks Volum

Perubahan volum perdagangan barangan luar negeri diperoleh daripada perubahan nilai perdagangan barangan luar negeri setelah dikeluarkan kesan perubahan harga.

Jadual 2A, 2B dan 2C menyediakan ringkasan perubahan indeks volum eksport dan Jadual 4A, 4B dan 4C, indeks volum import. Arah aliran komponen volum adalah ditunjukkan dalam indeks ini, yang mana menyatakan hubungan di antara nilai tempoh semasa dan tempoh asas bagi satu set nilai seunit tertentu.

### 7.3 Terma Perdagangan.

Indeks nilai seunit eksport dan import boleh digunakan untuk mengukur terma perdagangan Malaysia. Indeks terma perdagangan dikira berasaskan kepada nisbah indeks nilai seunit eksport kepada indeks nilai seunit import.

Jadual 5A, 5B dan 5C menyediakan ringkasan perubahan indeks terma perdagangan. Indeks ini dikira dengan mendapatkan nisbah indeks nilai seunit eksport kepada indeks nilai seunit import. Ia menggambarkan kos sesuatu volum yang diimport dari segi volum yang dieksport. Suatu kenaikan dalam terma perdagangan menunjukkan pergerakan yang lebih menguntungkan dan kejatuhan membawa kesan yang sebaliknya. Satu nilai indeks yang lebih atau kurang daripada 100 mencerminkan terma perdagangan yang lebih atau kurang menguntungkan berbanding dengan terma perdagangan tahun asasnya 2010.

## 8. METODOLOGI

- 8.1 Proses pepadanan kod dilaksanakan bagi menyelaraskan kod *Harmonization System* (HS) 2017 dengan HS2022 yang digunakan bermula Jun 2022.
- 8.2 *Lumpy import* (seperti import kapal terbang dan kapal) adalah tidak termasuk dalam penyusunan.
- 8.3 Kod produk yang mempunyai transaksi kurang dari 7 bulan dalam setahun juga tidak diambil kira.

## 9. PELARASAN MUSIM

Data siri masa adalah amat berguna untuk ahli ekonomi, pembuat dasar & polisi dan penganalisis siri masa untuk mengenal pasti ciri-ciri penting siri ekonomi seperti arah, *turning point* dan konsistensi antara penunjuk ekonomi yang lain. Kadangkala ciri ini sukar untuk diperhatikan kerana pergerakan bermusim. Oleh itu, sekiranya kesan bermusim boleh disingkirkan, perilaku data siri ini dapat dilihat dengan lebih baik. Anggaran dan penyingkiran kesan bermusim dipanggil **pelarasan bermusim**.

Pelarasan bermusim adalah satu proses untuk mengenal pasti dan menyingkirkan bentuk pola bermusim yang biasa berlaku dalam tempoh satu tahun, yang mungkin juga merangkumi pengaruh dari kesan cuti yang bergerak dan hari bekerja/ berdagang bagi suatu tempoh. Objektif utama proses ini adalah untuk menyerlahkan arah aliran dan pergerakan-pergerakan jangka pendek dalam siri ini.

Di Malaysia, kebanyakan data siri masa terjejas oleh kesan bermusim. Oleh itu, untuk menghapuskan kesan bermusim dan juga melaraskan musim data siri masa ekonomi Malaysia, X-12 ARIMA telah digunakan sebagai pakej pelarasan bermusim standard oleh Jabatan Perangkaan, Malaysia.

Data siri masa ekonomi Malaysia kerap dipengaruhi oleh perayaan agama utama seperti Aidil Fitri, Tahun Baru Cina dan Deepavali. Tarikh perayaan ini tetap mengikut tahun lunar tetapi berbeza-beza mengikut kalendar Gregorian. Oleh itu, untuk menganggar dan menyingkirkan kesan cuti yang bergerak dari data siri masa, satu prosedur telah dibangunkan iaitu Seasonal Adjustment For Malaysia (SEAM).

Kaedah SEAM digunakan untuk membuang kesan bermusim bagi data indeks perdagangan luar negeri Malaysia. Pelarasan musim hanya dibuat ke atas data bulanan bagi indeks volum eksport dan indeks volum import. Siri data pelarasan bermusim untuk tiga tahun sebelumnya akan disemak setiap tahun apabila data untuk 12 bulan lengkap.

## 10. DASAR PINDAAN

Dasar bulan semasa adalah provisional (p) dan tertakluk kepada pindaan sehingga ia dimuktamadkan. Pindaan dibuat sekiranya wujud maklumat tambahan. Data muktamad perangkaan Perdagangan Luar Negeri 2022 telah digunakan bermula penerbitan Jun 2023 bagi perubahan dalam indeks volum yang menggunakan kaedah Paasche.

## **TECHNICAL NOTES**

### **1. INTRODUCTION**

- 1.1 *External trade indices (ETI) measure changes in the levels of unit values and volumes of Malaysia's imports and exports. The index numbers, which reflect the percentage rise or fall of unit value and volume levels.*
- 1.2 *ETI were first constructed with 1970 as the base year (1970=100) and then base year 1999=100 and 2005=100 subsequently. Currently the indices are rebased to 2010=100, commencing from reference month January 2016.*
- 1.3 *Commencing in reference month of January 2018, ETI was updated using the "basket" of goods for year 2013 by maintaining the same base year, 2010 = 100. Subsequently, ETI (2010=100) has been updated again using the 2015 "basket" of goods starting from reference month January 2019.*

### **2. OBJECTIVE**

- 2.1 *The external trade unit value and volume indices are key economic indicators which have a variety of applications and uses.*
- 2.2 *The following are the main uses of these indices:*
  - 2.2.1 *They provide a measure of the extent to which changes in the values of exports and imports are due to changes in price/unit value levels and the extent to which value changes are accounted for by volume changes.*
  - 2.2.2 *They enable policy makers to assess the effects of price change in exports with those in imports (which is referred to as terms of trade) for commodities.*
  - 2.2.3 *They can be utilized for making projections to ascertain likely future changes in prices, output and so on. These comparisons and projections facilitate decision making at company, industry and government level.*
  - 2.2.4 *They also measure the changes in the real value of Malaysian imports or exports over time using the deflation method.*

### **3. SOURCES OF DATA**

*Data used in calculating the export and import unit value and volume indices is derived from Malaysia external trade data which is in turn mainly processed from import and export custom declaration forms.*

### **4. COMPUTATIONAL PROCEDURE**

- 4.1 *The procedure used to derive Unit Value Index is as follows:*
  - I. *Compute unit values for each selected SITC commodity item;*
  - II. *Compute unit value relatives;*
  - III. *Compute value weights;*
  - IV. *Multiply each relative by the corresponding weight;*
  - V. *Total the product;*
  - VI. *Divide these totals by the sum of the weights.*

- 4.2 The weighted arithmetic mean of relative unit value index, in which the weights are equal to base-period values, is equivalent to Laspeyres unit value index:

$$p^L = \frac{\sum \frac{P_n}{P_o} (p_o q_o)}{\sum (p_o q_o)} \times 100$$

where

$p^L$	=	Laspeyres unit value index;
$p_n$	=	Commodity unit values in the given period;
$p_o$	=	Commodity unit values in the base period;
$p_o q_o$	=	Base year weights

- 4.3 Volume indices for exports and imports are derived indirectly by deflating indices of values of exports and imports with the corresponding export and import unit value indices. In this case, the resulting indirect volume index will be Paasche volume index.

- 4.4 Effective from the reference month for January 2019, Laspeyres chain index method will be used in the calculation of the ETI which employs December 2018 as the link month.

ETI are calculated as a chain of fixed-basket indices. This means that a sequence of fixed-basket indices have been chained together to create a continuous time series. This is necessary to avoid having breaks in an index when a basket update is performed.

Unit value indices for reference month are calculated based on changes of index for that month over the link month (new basket) multiplied by the link month index (old basket).

$$P_{t/10}^{ch} = P_{t/D18}^{new} \times P_{D18/10}^{old}$$

where,

$P_{t/10}^{ch}$	=	Chain index which measures the changes in unit value from 2010 to any period
$P_{t/D18}^{new}$	=	A new series composite index that compares the unit value at any period $t$ to the link month
$P_{D18/10}^{old}$	=	the old series composite index which compares the unit value for December 2018 to the 2010 unit value

- 4.5 Import indices use 'cost, insurance and freight' (c.i.f.) values, while export indices are calculated using 'free on board' (f.o.b.) values.

- 4.6 The indices are compiled using the year 2010 as the base. These series relate to:

- i Unit value indices of exports
- ii Volume indices of exports
- iii Unit value indices of imports
- iv Volume indices of imports
- v Terms of trade indices

- 4.7 These indices are compiled for each calendar month while the annual indices are computed from the monthly series.

- 4.8 The indices will be disseminated at the 1-digit SITC section.

## 5. **COVERAGE**

*Approximately 786 export items representing about 84.4 percent of the total value of exports recorded in 2015 and 1,583 import items accounting for about 83.0 percent of the total value of imports in 2015 are used in the calculation of the index of imports and exports, respectively.*

## 6. **WEIGHT**

*The weights used in this type of index are values. The data used to derive the weights are the values of Malaysia imports and exports of merchandise during 2015. Weights are allocated in accordance with these values at 1-digit SITC level.*

## 7. **CONCEPT AND DEFINITIONS**

### 7.1 *Unit Value Indices*

*Price changes in external merchandise trade are reflected by changes in unit value indices of external merchandise trade which are compiled based on unit value.*

*Table 1A, 1B and 1C provides a summary of changes in the export unit value indices and Table 3A, 3B and 3C, of the import unit value indices. Trends in unit value component are illustrated by these indices, which expresses the relationship between value in the current period and the value in the base period of a given basket containing specific quantities of goods.*

### 7.2 *Volume Indices*

*Changes in volume of external merchandise trade are derived from changes in external merchandise trade value with the effect of price changes that has been discounted.*

*Table 2A, 2B and 2C provides a summary of the export volume indices and Table 4A, 4B and 4C, of the import volume indices. Trends in the quantity component are illustrated by this index, which expresses the relationship between the value of a given set of unit values for the current period and the value for the base period.*

### 7.3 *Terms of Trade*

*The export and import unit value indices can be used to measure the Malaysia's terms of trade. The terms of trade index is calculated based on the ratio of unit value index of exports to the unit value index of imports.*

*Table 5A, 5B and 5C provides a summary of changes in the terms of trade indices. The index is calculated as the ratio of the export unit value index to the import unit value index. It represents the cost of a given volume of imports in terms of exports. A rise in the terms of trade indicates a favourable movement and a fall, an adverse movement. An index value above or below 100 indicates the terms of trade are either more or less favorable than the 2010 base period.*

## 8. **METHODOLOGY**

8.1 *The process of mapping the code has been implemented to streamline the code Harmonization System (HS) 2017 to HS2022 which was in use from June 2022.*

8.2 *Lumpy imports (such as import of aircraft and vessel) are excluded from the compilation.*

8.3 *The product codes which have less than seven transactions in a year are also excluded.*

## 9. SEASONAL ADJUSTMENT

*Time-series data are very useful for economists, policy & decision makers and time-series analysts to identify the important features of economic series such as direction, turning point and consistency between other economic indicators. Sometimes this feature is difficult to observe because of seasonal movements. Thus, if the seasonal effect can be removed, the behaviour of the series would be better viewed. The estimation and removal of the seasonal effects is called seasonal adjustment.*

*Seasonal adjustment is a process to identify and to remove the regular within-a-year seasonal pattern, which may also include the influences of moving holidays and working/trading days effect in each period. The ultimate objective of the process is to highlight the underlying trends and short-term movements in the series.*

*In Malaysia, most of the time series data are affected by seasonal effects. Hence, to eliminate the seasonal effect as well as to seasonally adjust the Malaysian economic time series data, X-12 ARIMA was used as a standard seasonal adjustment package by Department of Statistics, Malaysia.*

*Malaysian economic time series data are often affected by major religious festivals such as Eid-ul Fitr, Chinese New Year and Deepavali. These festivals' dates are fixed according to the lunar year but vary according to the Gregorian calendar. Therefore, to estimate and remove moving holiday effect from time-series data, a procedure was developed, namely Seasonal Adjustment for Malaysia (SEAM).*

*The SEAM method is used to remove seasonal effect for Malaysia's external trade indices data. The seasonal adjustment is only carried out on monthly export and import volume indices. The seasonally adjusted series data for the preceding three years are revised each year when the figures for complete 12 months become available.*

## 10. REVISION POLICY

*Data for the current month is provisional(p) and subject to revision until it is finalized. Revisions are made if there are additional information. Final data external trade statistics 2022 has been used starting from the June 2023 publication for the change in volume index using Paasche index method.*

## **4. LAMPIRAN** *APPENDIX*

**PERBANDINGAN WAJARAN MENGIKUT SEKSYEN ANTARA BAKUL 2013 DAN 2015 YANG DIGUNAKAN DALAM  
INDEKS PERDAGANGAN LUAR NEGERI, IPLN (2010=100)**

*COMPARISON OF WEIGHTS BY SECTIONS BETWEEN 2013 AND 2015 BASKETS USED IN THE EXTERNAL TRADE INDEX,  
ETI (2010=100)*

SEKSYEN SECTIONS	EKSPORT EXPORTS		WAJARAN WEIGHTS		IMPORT IMPORTS	
	2013	2015	2013	2015	2013	2015
<b>0 Makanan</b> <i>Food</i>	3.0	3.520	6.2		6.839	
<b>1 Minuman &amp; Tembakau</b> <i>Beverages and Tobacco</i>	0.5	0.600	0.6		0.662	
<b>2 Bahan Mentah Tidak Boleh Dimakan</b> <i>Inedible Crude Materials</i>	2.6	2.725	3.8		3.351	
<b>3 Minyak Galian</b> <i>Mineral Fuels</i>	22.7	16.097	17.3		12.865	
<b>4 Minyak &amp; Lemak Binatang &amp; Sayur-sayuran</b> <i>Animal &amp; Vegetable Oils &amp; Fats</i>	6.9	6.016	0.7		1.070	
<b>5 Bahan Kimia</b> <i>Chemicals</i>	7.2	7.781	9.6		10.513	
<b>6 Barang-barang Keluaran Kilang</b> <i>Manufactured Goods</i>	9.3	9.647	13.7		13.371	
<b>7 Alat Jentera &amp; Kelengkapan Pengangkutan</b> <i>Machinery &amp; Transport Equipment</i>	37.9	42.255	40.1		41.794	
<b>8 Pelbagai Barang Keluaran Kilang</b> <i>Miscellaneous Manufactured Articles</i>	9.3	10.929	6.0		7.572	
<b>9 Pelbagai Urusniaga &amp; Barangan</b> <i>Miscellaneous Transactions &amp; Commodities</i>	0.6	0.430	2.0		1.963	
<b>JUMLAH</b> <i>Total</i>	<b>100.0</b>	<b>100.0</b>	<b>100.0</b>		<b>100.0</b>	

**JADUAL TARIKH PENGELUARAN INDEKS PERDAGANGAN LUAR NEGERI (2010=100), JANUARI - DISEMBER 2023**  
*SCHEDULE OF RELEASE DATES FOR EXTERNAL TRADE INDICES (2010=100), JANUARY - DECEMBER 2023*

<b>BULAN RUJUKAN</b> <i>REFERENCE MONTH</i>		<b>TARIKH PENGELUARAN PENERBITAN</b> <i>RELEASE DATES OF PUBLICATION</i>	
<b>JANUARI</b> <i>JANUARY</i>	28	<b>FEBRUARI</b> <i>FEBRUARY</i>	<b>2023</b>
<b>FEBRUARI</b> <i>FEBRUARY</i>	28	<b>MAC</b> <i>MARCH</i>	<b>2023</b>
<b>MAC</b> <i>MARCH</i>	28	<b>APRIL</b> <i>APRIL</i>	<b>2023</b>
<b>APRIL</b> <i>APRIL</i>	26	<b>MEI</b> <i>MAY</i>	<b>2023</b>
<b>MEI</b> <i>MAY</i>	28	<b>JUN</b> <i>JUNE</i>	<b>2023</b>
<b>JUN</b> <i>JUNE</i>	28	<b>JULAI</b> <i>JULY</i>	<b>2023</b>
<b>JULAI</b> <i>JULY</i>	28	<b>OGOS</b> <i>AUGUST</i>	<b>2023</b>
<b>OGOS</b> <i>AUGUST</i>	27	<b>SEPTEMBER</b> <i>SEPTEMBER</i>	<b>2023</b>
<b>SEPTEMBER</b> <i>SEPTEMBER</i>	27	<b>OKTOBER</b> <i>OCTOBER</i>	<b>2023</b>
<b>OKTOBER</b> <i>OCTOBER</i>	28	<b>NOVEMBER</b> <i>NOVEMBER</i>	<b>2023</b>
<b>NOVEMBER</b> <i>NOVEMBER</i>	28	<b>DISEMBER</b> <i>DECEMBER</i>	<b>2023</b>
<b>DISEMBER</b> <i>DECEMBER</i>	26	<b>JANUARI</b> <i>JANUARY</i>	<b>2024</b>

PENERBITAN INI AKAN DITERBITKAN DI LAMAN WEB JABATAN PERANGKAAAN MALAYSIA  
 (<http://www.statistics.gov.my>) PADA TARIKH PENGELUARAN SELEPAS MASA EMBARGO (12.00 PM)

*THIS PUBLICATION WILL BE POSTED ON THE WEBSITE OF THE DEPARTMENT OF STATISTICS MALAYSIA  
 (<http://www.statistics.gov.my>) ON THE RELEASE DATE AFTER THE EMBARGO TIME (12.00 PM)*

ISSN 1675-4344



9 771675 434001

**BANCI 2024**  
**PERTANIAN**  
KUNCI KEMAJUAN PERTANIAN



[www.dosm.gov.my](http://www.dosm.gov.my)



@StatsMalaysia