



20 September 2019  
20 September 2019  
P.U. (A) 261

# WARTA KERAJAAN PERSEKUTUAN

## *FEDERAL GOVERNMENT GAZETTE*

### PERINTAH HAD LAJU (LEBUH RAYA PESISIRAN PANTAI BARAT (TAIPING-BANTING)) (PINDAAN) 2019

### *SPEED LIMIT (WEST COAST EXPRESSWAY (TAIPING-BANTING)) (AMENDMENT) ORDER 2019*

DISIARKAN OLEH/  
PUBLISHED BY  
JABATAN PEGUAM NEGARA/  
ATTORNEY GENERAL'S CHAMBERS

AKTA PENGANGKUTAN JALAN 1987

PERINTAH HAD LAJU (LEBUH RAYA PESISIRAN PANTAI BARAT  
(TAIPING-BANTING)) (PINDAAN) 2019

PADA menjalankan kuasa yang diberikan oleh subseksyen 69(2) Akta Pengangkutan Jalan 1987 [*Akta 333*], Menteri membuat perintah yang berikut:

**Nama dan permulaan kuat kuasa**

1. (1) Perintah ini bolehlah dinamakan **Perintah Had Laju (Lebuh Raya Pesisiran Pantai Barat (Taiping-Banting)) (Pindaan) 2019**.

(2) Perintah ini mula berkuat kuasa pada 23 September 2019.

**Pindaan Jadual Pertama**

2. Perintah Had Laju (Lebuh Raya Pesisiran Pantai Barat (Taiping-Banting)) 2019 [*P.U. (A) 153/2019*], yang disebut “Perintah ibu” dalam Perintah ini, dipinda dalam Jadual Pertama dengan memasukkan selepas butiran (g)(ii) dengan butiran yang berikut:

	<i>(1)</i> <i>Jalan</i>	<i>(2)</i> <i>Had Laju</i> <i>(km/j)</i>
<i>“(h)</i>	kilometer 193.59 di koordinat U 455672.836, T 310764.161 Grid Bentuk Benar Serong di Tepi (RSO) Geosentrik (GDM 2000) dan berakhir di kilometer 197.04 di koordinat U 458367.024, T 308846.064 Grid RSO Geosentrik (GDM 2000) arah utara dan arah selatan;	90
<i>(i)</i>	kilometer 197.04 di koordinat U 458367.024, T 308846.064 Grid RSO Geosentrik (GDM 2000) dan berakhir di kilometer 198.24 di koordinat U 459179.232, T 307962.705 Grid RSO Geosentrik (GDM 2000) arah utara dan arah selatan;	60
<i>(j)</i>	Persimpangan Bertingkat Kg. Lekir dari—	
	<i>(i)</i> koordinat U 457434.191, T 309832.470 Grid RSO Geosentrik (GDM 2000) dan berakhir di Had Sempadan Penyenggaraan di koordinat U 457658.368, T 309559.151 Grid RSO Geosentrik (GDM 2000) dan berakhir di Had Sempadan Penyenggaraan di koordinat U 457600.836, T 309545.941 Grid RSO Geosentrik (GDM 2000);	50
	<i>(ii)</i> Had Sempadan Penyenggaraan koordinat U 457672.100, T 309544.549 Grid RSO Geosentrik (GDM 2000) dan dari Had Sempadan Penyenggaraan di koordinat U 457609.423, T 309519.185 Grid RSO	50

<i>(1)</i> <i>Jalan</i>	<i>(2)</i> <i>Had Laju</i> <i>(km/j)</i>
Geosentrik (GDM 2000) dan berakhir di koordinat U 457914.746, T 309309.817 Grid RSO Geosentrik (GDM 2000);	
(iii) koordinat U 457942.793, T 309335.604 Grid RSO Geosentrik (GDM 2000) dan berakhir di Had Sempadan Penyenggaraan di koordinat U 457753.790, T 309570.762 Grid RSO Geosentrik (GDM 2000) dan berakhir di Had Sempadan Penyenggaraan di koordinat U 457814.140, T 309584.876 Grid RSO Geosentrik (GDM 2000); dan	50
(iv) Had Sempadan Penyenggaraan di koordinat U 457740.294, T 309585.442 Grid RSO Geosentrik (GDM 2000) dan dari Had Sempadan Penyenggaraan di koordinat U 457796.032, T 309608.577 Grid RSO Geosentrik (GDM 2000) dan berakhir di koordinat U 457462.238, T 309858.258 Grid RSO Geosentrik (GDM 2000); dan	50
<i>(k)</i> Persimpangan Bertingkat Sitiawan dari—	
(i) Had Sempadan Penyenggaraan di koordinat U 462311.356, T 301934.818 Grid RSO Geosentrik (GDM 2000) dan berakhir di koordinat U 462966.430, T 304456.631 Grid RSO Geosentrik (GDM 2000) arah timur dan	90

<i>(1)</i> <i>Jalan</i>	<i>(2)</i> <i>Had Laju</i> <i>(km/j)</i>
arah Barat;	
(ii) koordinat U 462966.430, T 304456.631 Grid RSO Geosentrik (GDM 2000) dan berakhir di koordinat U 463119.925, T 305785.172 Grid RSO Geosentrik (GDM 2000) dan berakhir di koordinat U 463369.250, T 305687.662 Grid RSO Geosentrik (GDM 2000); dan	50
(iii) koordinat U 463538.592, T 305687.142 Grid RSO Geosentrik (GDM 2000) dan dari koordinat U 462804.526, T 305819.891 Grid RSO Geosentrik (GDM 2000) dan berakhir di koordinat U 462966.430, T 304456.631 Grid RSO Geosentrik (GDM 2000); dan	50
<i>(l)</i> Persimpangan Bertingkat Sitiawan Utara dari—	
(i) koordinat U 469860.956, T 305051.785 Grid RSO Geosentrik (GDM 2000) dan dari koordinat U 470095.907, T 305208.660 Grid RSO Geosentrik (GDM 2000) dan berakhir di Had Sempadan Penyenggaraan di koordinat U 470404.780, T 303190.377 Grid RSO Geosentrik (GDM 2000); dan	50

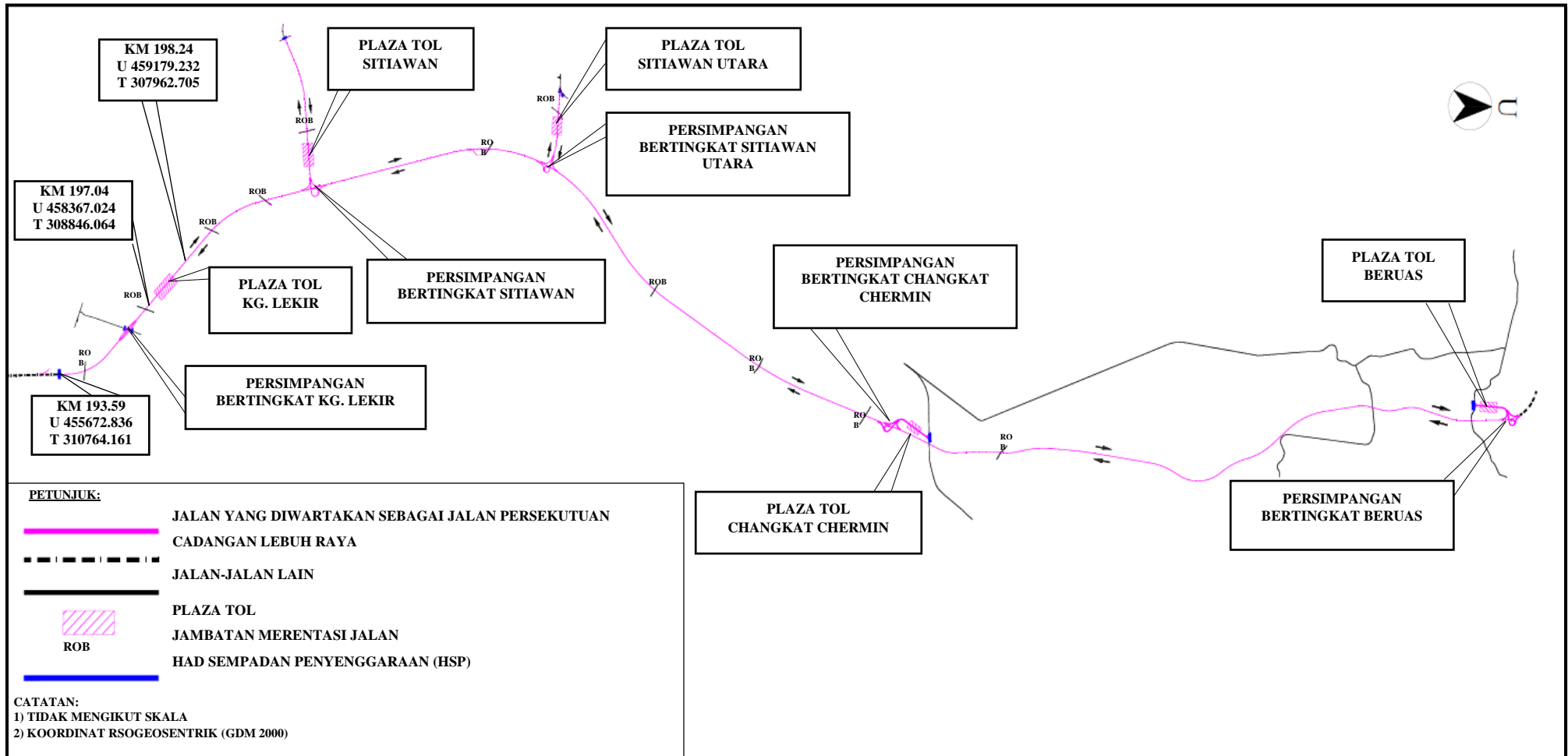
<i>(1)</i> <i>Jalan</i>	<i>(2)</i> <i>Had Laju</i> <i>(km/j)</i>
(ii) Had Sempadan Penyenggaraan, di koordinat U 470404.780, T 303190.377 Grid RSO Geosentrik (GDM 2000) dan dari Had Sempadan Penyenggaraan di koordinat U 470481.542, T 303265.177 Grid RSO Geosentrik (GDM 2000) dan berakhir di koordinat U 470344.871, T 305306.833 Grid RSO Geosentrik (GDM 2000) dan berakhir di koordinat U 469712.608, T 305029.965 Grid RSO Geosentrik (GDM 2000); dan	50
<i>(m)</i> Persimpangan Bertingkat Changkat Chermin dari—	
(i) Had Sempadan Penyenggaraan di koordinat U 481272.743, T 312487.857 Grid RSO Geosentrik (GDM 2000) dan berakhir di koordinat U 480437.002, T 312241.873 Grid RSO Geosentrik (GDM 2000) dan berakhir di koordinat U 479758.809, T 312027.612 Grid RSO Geosentrik (GDM 2000); dan	50
(ii) koordinat U 480124.059, T 312164.336 Grid RSO Geosentrik (GDM 2000) dan dari koordinat U 479959.473, T 312062.045 Grid RSO Geosentrik (GDM 2000) dan berakhir di Had Sempadan Penyenggaraan di koordinat U 481272.743, T 312487.857 Grid RSO Geosentrik (GDM 2000); dan	50

<i>(1)</i> <i>Jalan</i>	<i>(2)</i> <i>Had Laju</i> <i>(km/j)</i>
<i>(n)</i> Persimpangan Bertingkat Beruas dari—	
(i) Had Sempadan Penyenggaraan di koordinat U 497350.332, T 311593.297 Grid RSO Geosentrik (GDM 2000) dan berakhir di koordinat U 498386.051, T 311988.012 Grid RSO Geosentrik (GDM 2000); dan	50
(ii) koordinat U 498143.279, T 311972.220 Grid RSO Geosentrik (GDM 2000) dan berakhir di Had Sempadan Penyenggaraan di koordinat U 497350.332, T 311593.297 Grid RSO Geosentrik (GDM 2000).	50

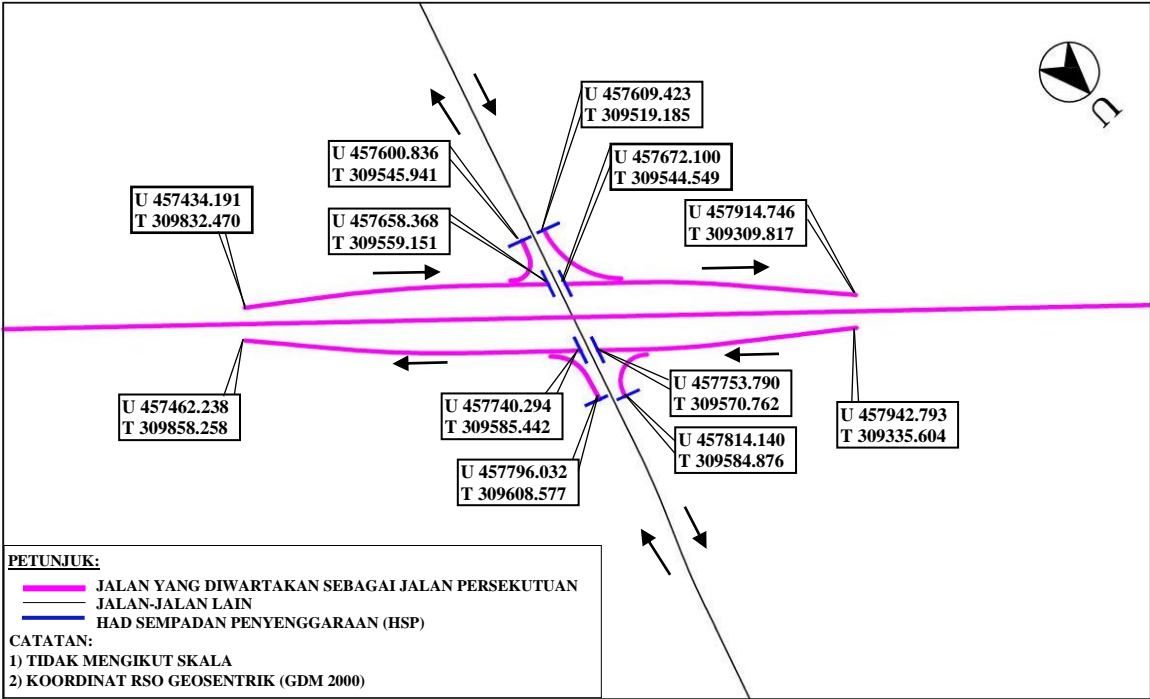
### **Pindaan Jadual Kedua**

3. Perintah ibu dipinda dalam Jadual Kedua dengan memasukkan selepas PETA C peta yang berikut:

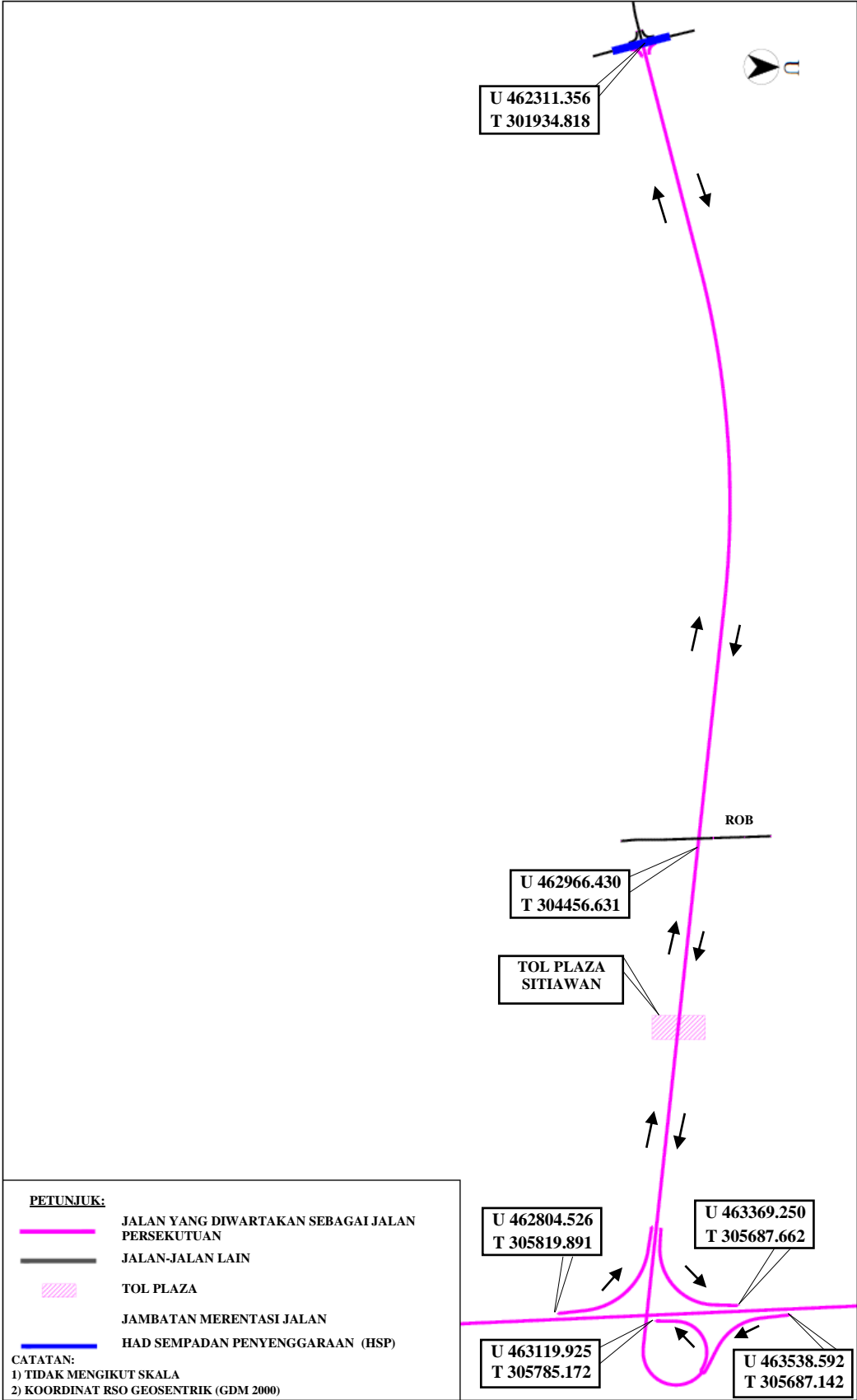
PETA: PERSIMPANGAN BERTINGKAT KG. LEKIR KE PERSIMPANGAN BERTINGKAT BERUAS



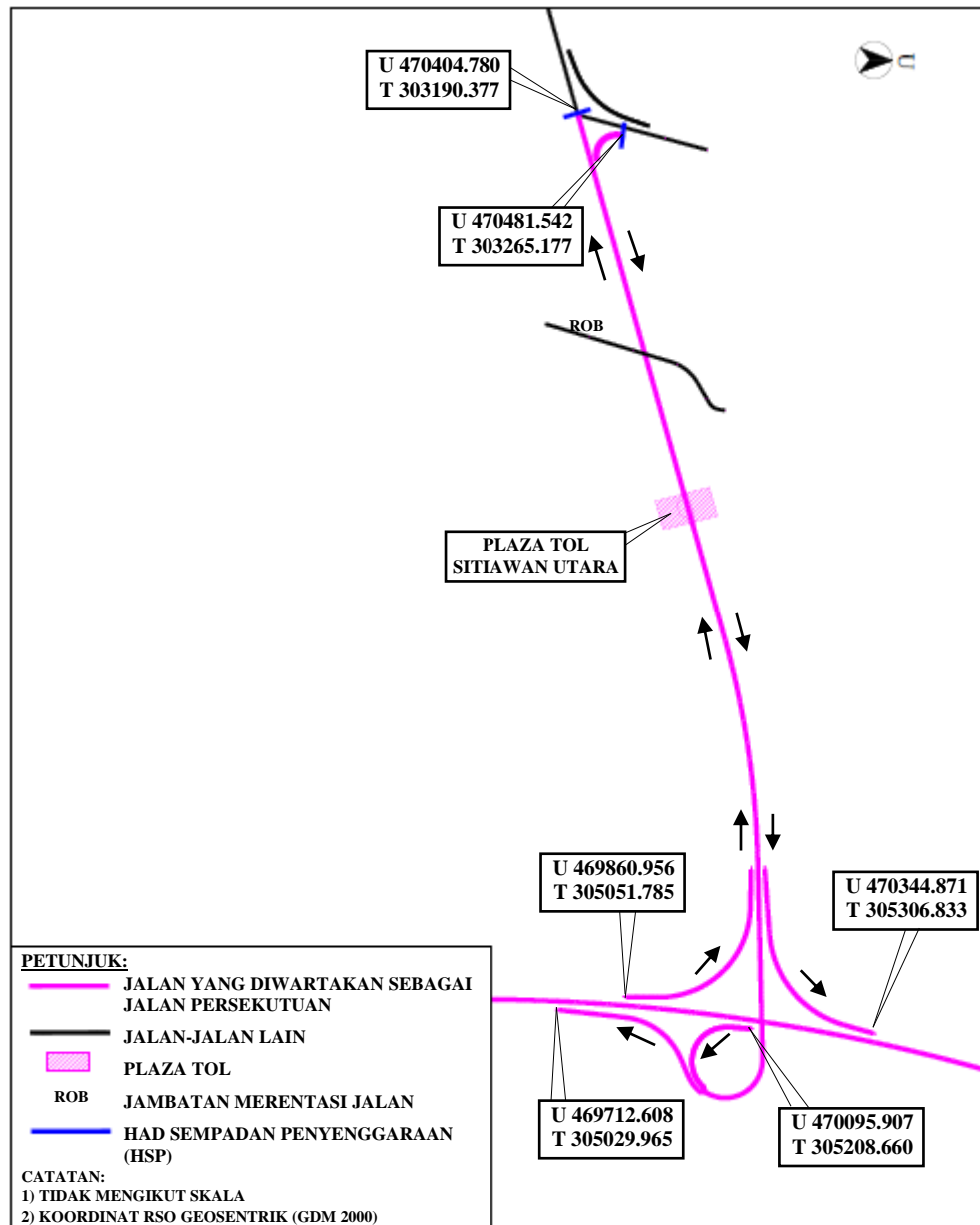
PETA: PERSIMPANGAN BERTINGKAT KG. LEKIR



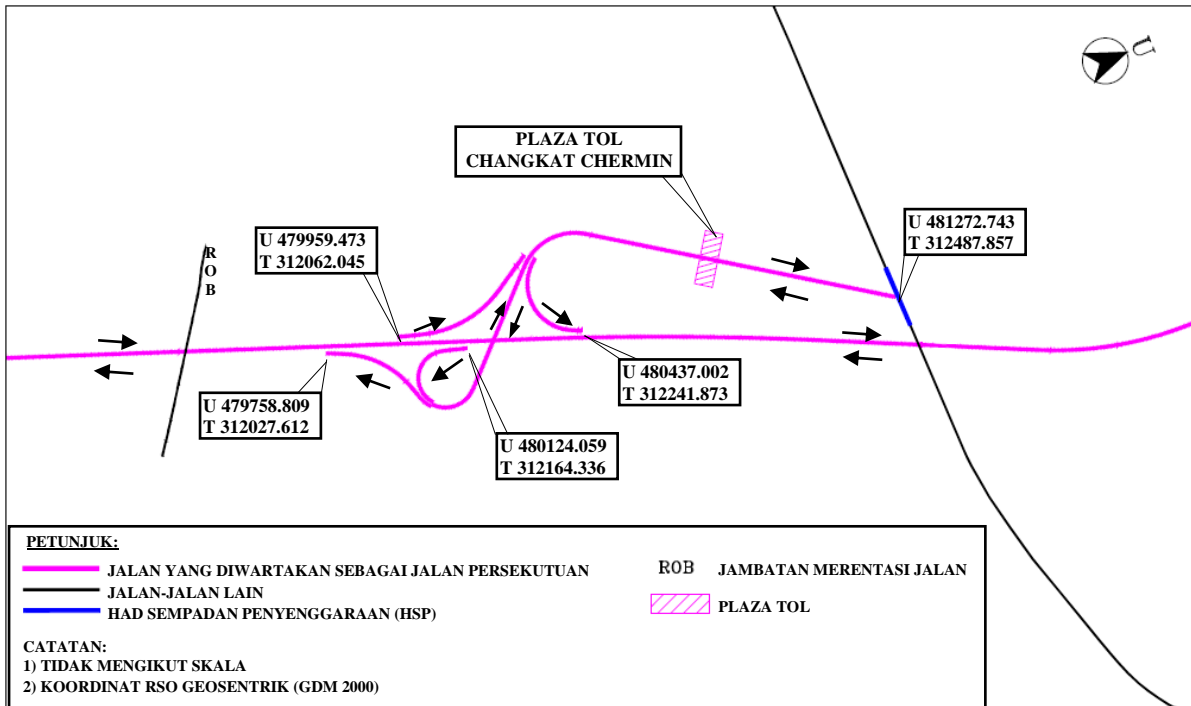
PETA: PERSIMPANGAN BERTINGKAT SITIAWAN



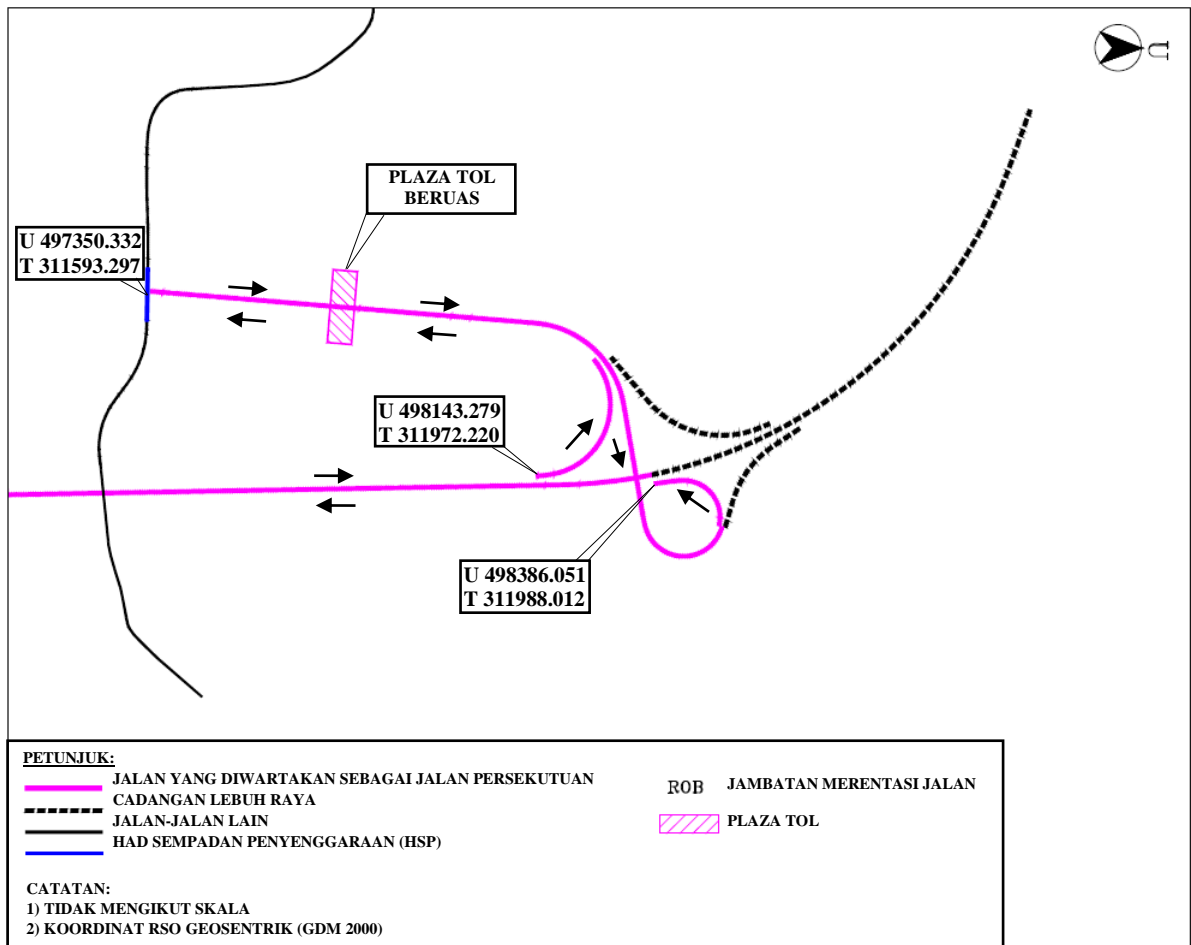
PETA: PERSIMPANGAN BERTINGKAT SITIAWAN UTARA



PETA: PERSIMPANGAN BERTINGKAT CHANGKAT CHERMIN



PETA : PERSIMPANGAN BERTINGKAT BERUAS



Dibuat 19 September 2019

[KKR.PUU.110-1/6/20; PN(PU2)460/CIV]

BARU BIAN  
*Menteri Kerja Raya*

ROAD TRANSPORT ACT 1987

SPEED LIMIT (WEST COAST EXPRESSWAY (TAIPING-BANTING))  
(AMENDMENT) ORDER 2019

IN exercise of the powers conferred by subsection 69(2) of the Road Transport Act 1987 [*Act 333*], the Minister makes the following order:

**Citation and commencement**

1. (1) This order may be cited as the **Speed Limit (West Coast Expressway (Taiping-Banting)) (Amendment) Order 2019**.

(2) This Order comes into operation on 23 September 2019.

**Amendment of First Schedule**

2. The Speed Limit (West Coast Expressway (Taiping-Banting)) Order 2019 [*P.U. (A) 153/2019*], which is referred to as the “principal Order” in this Order, is amended in the First Schedule by inserting after item (*g*)(ii) the following items:

<i>(1)</i> <i>Road</i>	<i>(2)</i> <i>Speed Limit</i> <i>(km/h)</i>
<i>(h)</i> kilometre 193.59 of coordinates N 455672.836, E 310764.161 of the RSO Geocentric (GDM 2000) Grid and ending at kilometre 197.04 at coordinates N 458367.024, E 308846.064 of the RSO Geocentric (GDM 2000) Grid north bound and south bound;	90
<i>(i)</i> kilometre 197.04 of coordinates N 458367.024, E 308846.064 of the RSO Geocentric (GDM 2000) Grid and ending at kilometre 198.24 at coordinates N 459179.232, E 307962.705, of the RSO Geocentric (GDM 2000) Grid north bound and south bound;	60
<i>(j)</i> the Kg. Lekir Interchange from—	
<i>(i)</i> coordinates N 457434.191, E 309832.470 of the RSO Geocentric (GDM 2000) Grid and ending at Limit of Maintenance Responsibility at coordinates N 457658.368, E 309559.151 of the RSO Geocentric (GDM 2000) Grid and at the Limit of Maintenance Responsibility at the coordinates N 457600.836, E 309545.941 of the RSO Geocentric (GDM 2000) Grid;	50
<i>(ii)</i> the Limit of Maintenance Responsibility at coordinates N 457672.100, E 309544.549 of the RSO Geocentric	50

*(1)*  
*Road*

*(2)*  
*Speed Limit*  
*(km/h)*

(GDM 2000) Grid and from the Limit of Maintenance Responsibility at coordinates N 457609.423, E 309519.185 of the RSO Geocentric (GDM 2000) Grid and ending at coordinates N 457914.746, E 309309.817 of the RSO Geocentric (GDM 2000) Grid;

- |       |  |    |
|-------|--|----|
| (iii) | coordinates N 457942.793, E 309335.604 of the RSO Geocentric (GDM 2000) Grid and ending at the Limit of Maintenance Responsibility at coordinates N 457753.790, E 309570.762 of the RSO Geocentric (GDM 2000) Grid and at the Limit of Maintenance Responsibility at coordinates N 457814.140, E 309584.876 of the RSO Geocentric (GDM 2000) Grid; and   | 50 |
| (iv)  | the Limit of Maintenance Responsibility at coordinates N 457740.294, E 309585.442 of the RSO Geocentric (GDM 2000) Grid and from the Limit of Maintenance Responsibility at coordinates N 457796.032, E 309608.577 of the RSO Geocentric (GDM 2000) Grid and ending at coordinates N 457462.238, E 309858.258 of the RSO Geocentric (GDM 2000) Grid; and | 50 |

<i>(1)</i> <i>Road</i>	<i>(2)</i> <i>Speed Limit</i> <i>(km/h)</i>
<i>(k)</i> the Sitiawan Interchange from—	
(i) the Limit of Maintenance Responsibility at coordinates N 462311.356, E 301934.818 of the RSO Geocentric (GDM 2000) Grid and ending at coordinates N 462966.430, E 304456.631 of the RSO Geocentric (GDM 2000) Grid east bound and west bound;	90
(ii) coordinates N 462966.430, E 304456.631 of the RSO Geocentric (GDM 2000) Grid and ending at coordinates N 463119.925, E 305785.172 of the RSO Geocentric (GDM 2000) Grid and at coordinates N 463369.250, E 305687.662 of the RSO Geocentric (GDM 2000) Grid; and	50
(iii) coordinates N 463538.592, E 305687.142 of the RSO Geocentric (GDM 2000) Grid and from coordinates N 462804.526, E 305819.891 of the RSO Geocentric (GDM 2000) Grid and ending at coordinates N 462966.430, E 304456.631 of the RSO Geocentric (GDM 2000) Grid; and	50

<i>(1)</i> <i>Road</i>	<i>(2)</i> <i>Speed Limit</i> <i>(km/h)</i>
<i>(l)</i> the Sitiawan North Interchange from—	
<p>(i) coordinates N 469860.956, E 305051.785 of the RSO Geocentric (GDM 2000) Grid and from coordinates N 470095.907, E 305208.660 of the RSO Geocentric (GDM 2000) Grid and ending at the Limit of Maintenance Responsibility at coordinates N 470404.780, E 303190.377 of the RSO Geocentric (GDM 2000) Grid; and</p>	50
<p>(ii) the Limit of Maintenance Responsibility at coordinates N 470404.780, E 303190.377 of the RSO Geocentric (GDM 2000) Grid and from the Limit of Maintenance Responsibility at coordinates N 470481.542, E 303265.177 of the RSO Geocentric (GDM 2000) Grid and ending at coordinates N 470344.871, E 305306.833 of the RSO Geocentric (GDM 2000) Grid and ending at coordinates N 469712.608, E 305029.965 of the RSO Geocentric (GDM 2000) Grid; and</p>	50

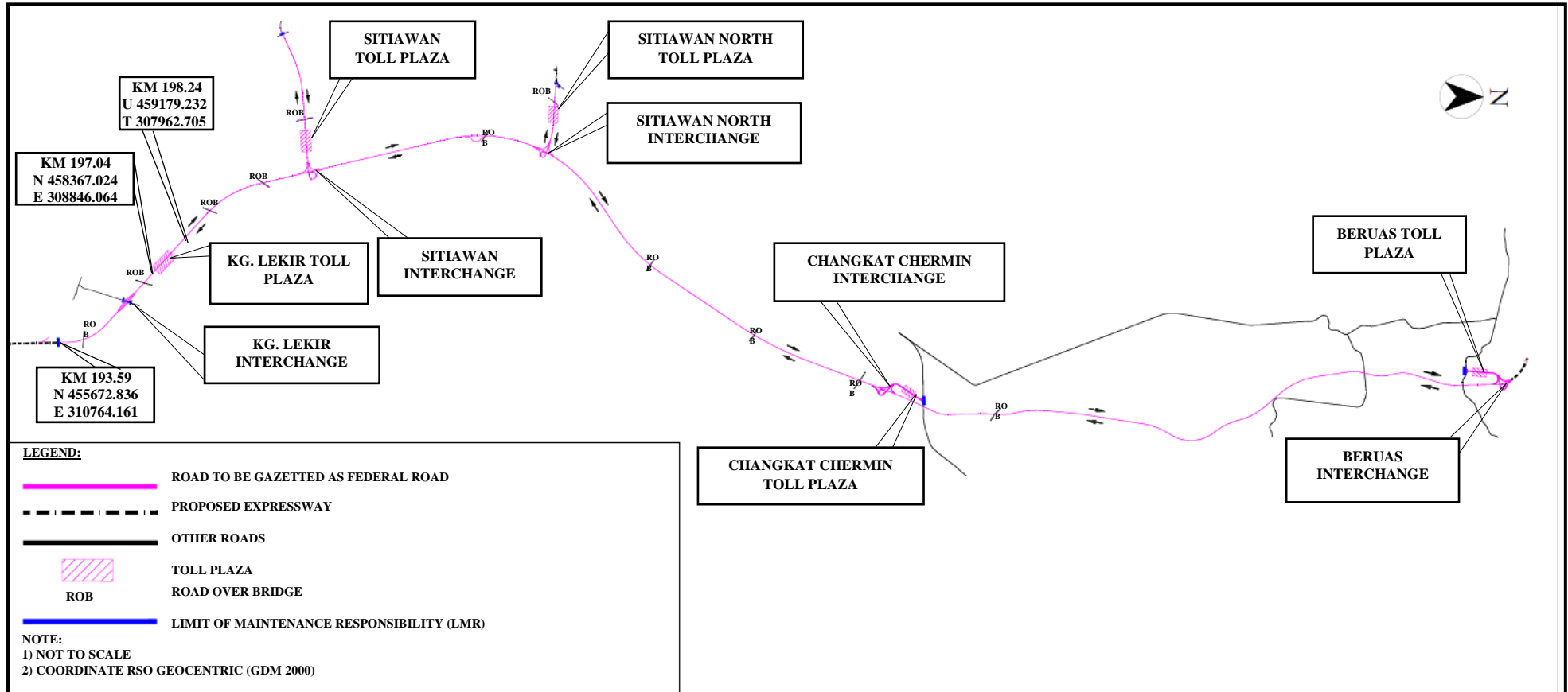
<i>(1)</i> <i>Road</i>	<i>(2)</i> <i>Speed Limit</i> <i>(km/h)</i>
<i>(m)</i> the Changkat Chermin Interchange from—	
(i) the Limit of Maintenance Responsibility at coordinates N 481272.743, E 312487.857 of the RSO Geocentric (GDM 2000) Grid and ending at coordinates N 480437.002, E 312241,873 of the RSO Geocentric (GDM 2000) Grid and ending at coordinates N 479758.809, E 312027.612 of the RSO Geocentric (GDM 2000) Grid; and	50
(ii) coordinates N 480124.059, E 312164.336 of the RSO Geocentric (GDM 2000) Grid and from coordinates N 479959.473, E 312062.045 of the RSO Geocentric (GDM 2000) Grid and ending at the Limit of Maintenance Responsibility at coordinates N 481272.743, E 312487.857 of the RSO Geocentric (GDM 2000) Grid; and	50
<i>(n)</i> the Beruas Interchange from—	
(i) the Limit of Maintenance Responsibility at coordinates N 497350.332, E 311593.297 of the RSO Geocentric (GDM 2000) Grid and ending at coordinates N 498386.051, E 311988.012 of the RSO Geocentric (GDM 2000) Grid; and	50

<i>(1)</i> <i>Road</i>	<i>(2)</i> <i>Speed Limit</i> <i>(km/h)</i>
(ii) coordinates N 498143.279, E 311972.220 of the RSO Geocentric (GDM 2000) Grid and ending at the Limit of Maintenance Responsibility at coordinates N 497350.332, E 311593.297 of the RSO Geocentric (GDM 2000) Grid.”.	50

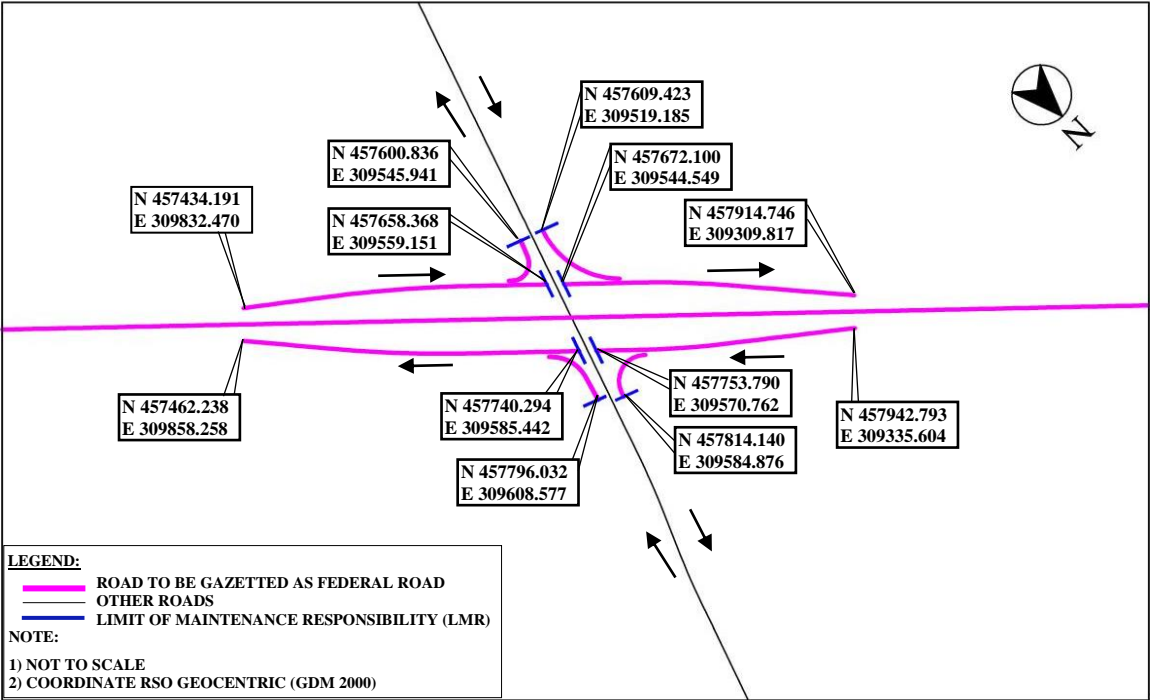
### **Amendment of Second Schedule**

3. The principal Order is amended in the Second Schedule by inserting after MAP C the following maps:

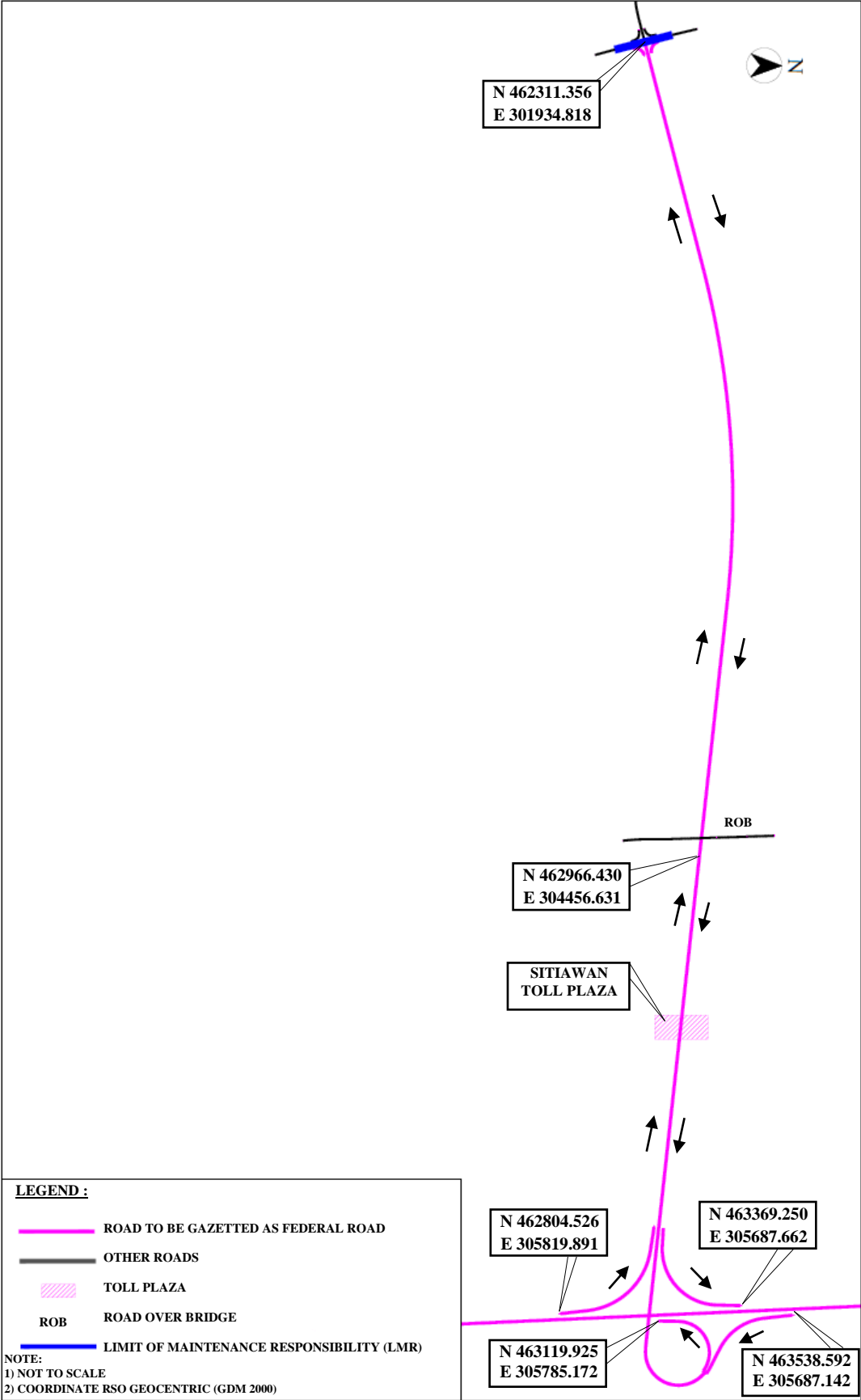
MAP: KG. LEKIR INTERCHANGE TO BERUAS INTERCHANGE



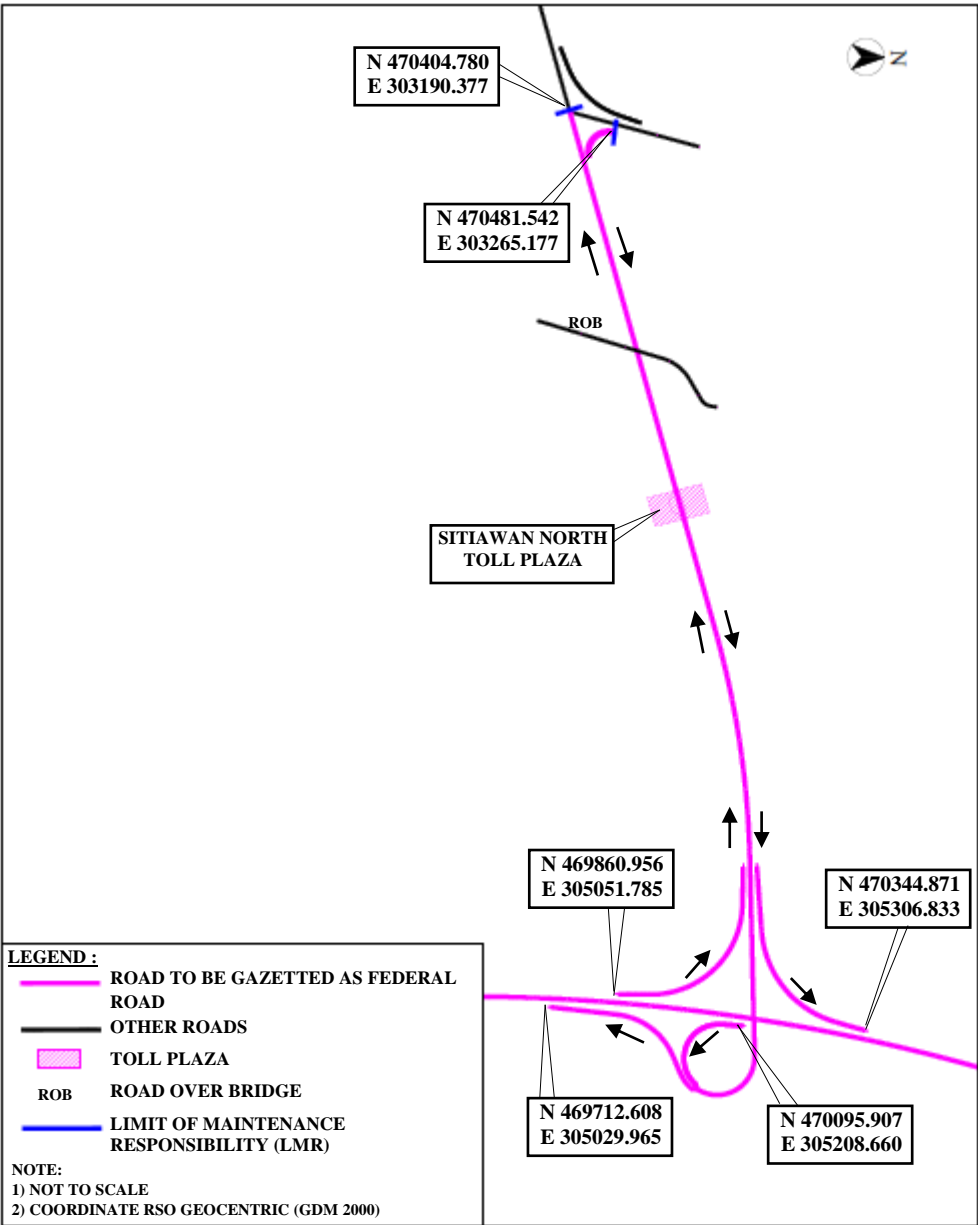
MAP: KG. LEKIR INTERCHANGE



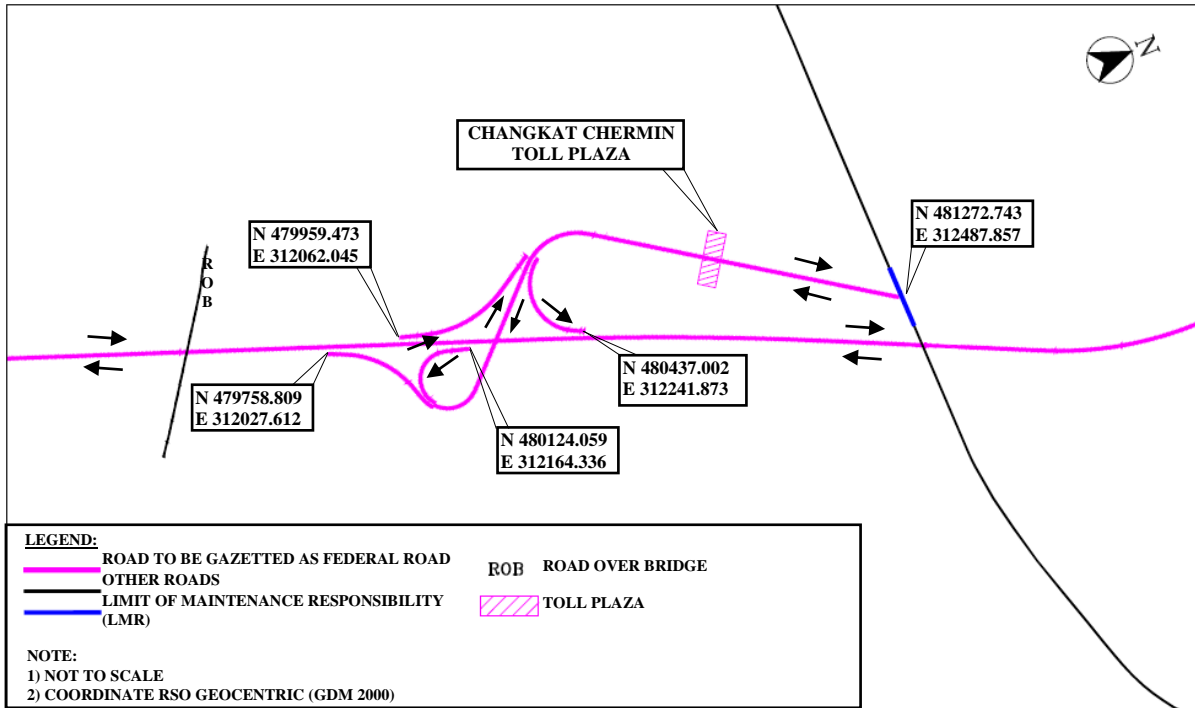
MAP: SITIAWAN INTERCHANGE



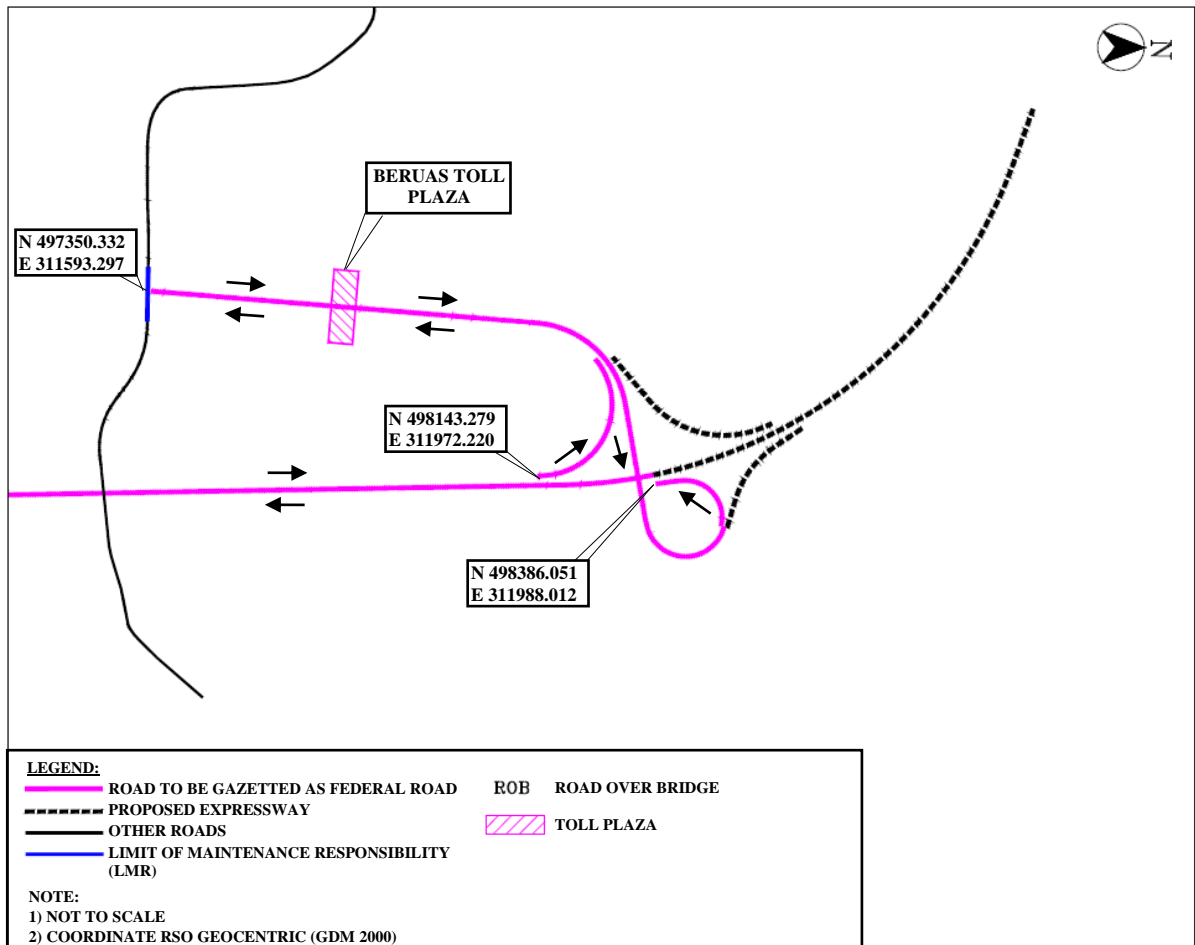
MAP: SITIAWAN NORTH INTERCHANGE



MAP: CHANGKAT CHERMIN INTERCHANGE



MAP: BERUAS INTERCHANGE



Made 19 September 2019

[KKR.PUU.110-1/6/20; PN(PU2)460/CIV]

BARU BIAN  
*Minister of Works*