



MALAYSIA

BANCI EKONOMI **2016** *ECONOMIC CENSUS*

BEKALAN ELEKTRIK, GAS, WAP DAN PENDINGINAN UDARA *ELECTRICITY, GAS, STEAM AND AIR CONDITIONING SUPPLY*

PERTANIAN
AGRICULTURE



PEMBUATAN
MANUFACTURING



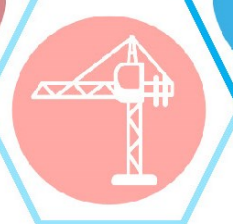
PERKHIDMATAN
SERVICES



**PERLOMBONGAN
DAN PENGKUARIAN**
MINING AND QUARRYING



PEMBINAAN
CONSTRUCTION



JABATAN PERANGKAAAN MALAYSIA
DEPARTMENT OF STATISTICS MALAYSIA

Muka surat ini sengaja dibiarkan kosong
This page is deliberately left blank



MALAYSIA

BANCI EKONOMI *ECONOMIC CENSUS*

2016

**BEKALAN ELEKTRIK, GAS, WAP DAN
PENDINGINAN UDARA**
*ELECTRICITY, GAS, STEAM AND
AIR CONDITIONING SUPPLY*



JABATAN PERANGKAAN MALAYSIA
DEPARTMENT OF STATISTICS, MALAYSIA

Diterbitkan oleh:

Jabatan Perangkaan Malaysia

Blok C6, Kompleks C,
Pusat Pentadbiran Kerajaan Persekutuan,
62514 Putrajaya,

MALAYSIA

Tel. : 03-8885 7000
Faks : 03-8888 9248
Portal : <https://www.dosm.gov.my>
Facebook : www.facebook.com/StatsMalaysia
Twitter : <https://twitter.com/StatsMalaysia>

Harga /Price : RM26.00

Diterbitkan pada Julai 2017

Hakcipta terpelihara.

Tiada bahagian daripada terbitan ini boleh diterbitkan semula, disimpan untuk pengeluaran atau ditukar dalam apa-apa bentuk atau alat apa jua pun kecuali setelah mendapat kebenaran daripada Jabatan Perangkaan Malaysia.

Pengguna yang mengeluarkan sebarang maklumat dari terbitan ini sama ada yang asal atau diolah semula hendaklah meletakkan kenyataan berikut:

“Sumber: Jabatan Perangkaan Malaysia”.

Published by:

Department of Statistics, Malaysia

Block C6, Complex C,
Federal Government Administrative Centre,
62514 Putrajaya,

MALAYSIA

Tel. : 03-8885 7000
Fax : 03-8888 9248
Portal : <https://www.dosm.gov.my>
Facebook : www.facebook.com/StatsMalaysia
Twitter : <https://twitter.com/StatsMalaysia>

Published in July 2017

All rights reserved.

No part of this publication may be reproduced or distributed in any form or by any means or stored in data base without the prior written permission from Department of Statistics, Malaysia.

Users reproducing content of this publication with or without adaptation should quote the following.

“Source: Department of Statistics, Malaysia.”

ISBN 978-967-2000-21-1

KATA PENGANTAR

Penerbitan ini memaparkan perangkaan bagi sektor bekalan elektrik, gas, wap dan pendinginan udara yang diperoleh daripada Banci Ekonomi 2016 bagi tahun rujukan 2015. Sektor bekalan elektrik, gas, wap dan pendinginan udara meliputi operasi utiliti elektrik dan gas yang menjana, mengawal dan mengagih tenaga elektrik dan gas. Juga termasuk bekalan wap dan pendinginan udara. Sektor ini meliputi semua industri dalam Seksyen D yang dikelaskan di bawah Piawaian Klasifikasi Industri Malaysia (MSIC) 2008 Ver. 1.0, selaras dengan Piawaian Klasifikasi Industri Antarabangsa bagi Semua Aktiviti Ekonomi (ISIC), Semakan Ke-4 2008. Kali terakhir banci ini dijalankan adalah pada tahun 2011 bagi tahun rujukan 2010.

Data utama yang berkaitan dengan nilai output kasar, nilai input perantaraan, nilai ditambah, bilangan pekerja, gaji & upah dan nilai harta tetap dilaporkan dalam penerbitan ini. Maklumat pekerja mengikut kategori, kelulusan dan kemahiran turut dipaparkan. Data tersebut boleh digunakan oleh agensi kerajaan, ahli ekonomi, ahli akademik, pihak swasta serta individu bagi tujuan membuat perancangan dan penggubalan dasar, analisis ekonomi, unjuran dan dapat membantu merancang pembangunan perniagaan.

Penerbitan ini dibahagikan kepada tiga bahagian. Bahagian pertama memaparkan hasil penemuan bagi keseluruhan sektor bekalan elektrik, gas, wap dan pendinginan udara. Aspek teknikal seperti skop dan liputan, konsep dan definisi serta pembolehubah utama yang digunakan diterangkan di bahagian kedua bagi memudahkan pengguna memahami statistik yang diterbitkan, manakala bahagian ketiga pula memaparkan jadual perangkaan terperinci.

Jabatan merakamkan setinggi-tinggi penghargaan kepada semua pihak yang terlibat secara langsung dan tidak langsung dalam merealisasikan penerbitan Banci Ekonomi 2016 ini. Setiap maklum balas dan cadangan untuk penambahbaikan laporan ini pada masa akan datang amat dihargai.

DR. MOHD UZIR BIN MAHIDIN
Ketua Perangkawan Malaysia

Julai 2017

PREFACE

This publication presents statistics on electricity, gas, steam and air conditioning supply sector obtained from the Economic Census 2016 for reference year 2015. Electricity, gas, steam and air conditioning supply sector encompass the operation of electric and gas utilities, which generate, control and distribute electric power or gas. Also includes the provision of steam and air conditioning supply. This sector includes all industries in Section D classified under the Malaysia Standard Industrial Classification (MSIC) 2008 Ver. 1.0, in accordance with the International Standard Industrial Classification of All Economic Activities (ISIC), Revision 4, 2008. The last census was conducted in 2011 for reference year 2010.

Key data related to value of gross output, intermediate input, value added, number of persons engaged, salaries & wages and value of fixed assets are reported in this publication. Information on number of persons engaged by category, qualification and skill are also published. These data can be used by government agencies, economists, academicians, private sectors and individuals for planning and formulations policies, economic analysis, projections and to assist in business development planning.

This publication is divided into three parts. The first part displays the findings for the entire electricity, gas, steam and air conditioning supply sector. Technical aspects such as scope and coverage, concepts and definitions as well as the key variables used are describes in the second part to assist users to understand the published statistics. Meanwhile, the third part provides the detailed statistical tables.

Department expressed gratitude to those who have contributed directly and indirectly to this Economic Census 2016 publication. Every feedback and suggestion towards improving future reports is highly appreciated.

DR. MOHD UZIR BIN MAHIDIN

Chief Statistician Malaysia

July 2017

KANDUNGAN CONTENTS

	Muka surat <i>Page</i>
Kata pengantar <i>Preface</i>	i
Kandungan <i>Contents</i>	iii
Penemuan utama <i>Main findings</i>	3
Ringkasan penemuan <i>Summary of findings</i>	9
Nota teknikal <i>Technical notes</i>	23
Jadual <i>Tables</i>	
1 Perangkaan utama sektor bekalan elektrik, gas, wap dan pendinginan udara, 2010 - 2015 <i>Principal statistics of electricity, gas, steam and air conditioning supply sector, 2010 - 2015</i>	37
2 Perangkaan utama sektor bekalan elektrik, gas, wap dan pendinginan udara mengikut industri, 2015 <i>Principal statistics of electricity, gas, steam and air conditioning supply sector by industry, 2015</i>	38
3 Perangkaan utama sektor bekalan elektrik, gas, wap dan pendinginan udara mengikut negeri, 2015 <i>Principal statistics of electricity, gas, steam and air conditioning supply sector by state, 2015</i>	41
4 Perangkaan utama sektor bekalan elektrik, gas, wap dan pendinginan udara mengikut taraf sah, 2015 <i>Principal statistics of electricity, gas, steam and air conditioning supply sector by legal status, 2015</i>	42
5 Perangkaan utama sektor bekalan elektrik, gas, wap dan pendinginan udara mengikut hak milik, 2015 <i>Principal statistics of electricity, gas, steam and air conditioning supply sector by ownership, 2015</i>	43

KANDUNGAN CONTENTS

Jadual Tables		Muka surat Page
6	<p>Perangkaan utama sektor bekalan elektrik, gas, wap dan pendinginan udara mengikut saiz pekerja, 2015 <i>Principal statistics of electricity, gas, steam and air conditioning supply sector by employment size, 2015</i></p>	44
7	<p>Perangkaan utama sektor bekalan elektrik, gas, wap dan pendinginan udara mengikut kumpulan dan saiz output kasar, 2015 <i>Principal statistics of electricity, gas, steam and air conditioning supply sector by group and gross output size, 2015</i></p>	45
8	<p>Bilangan pekerja dan gaji & upah mengikut kategori pekerja dan jantina, 2015 <i>Number of persons engaged and salaries & wages by category of workers and sex, 2015</i></p>	46
9	<p>Bilangan pekerja dan gaji & upah yang dibayar mengikut kewarganegaraan dan jantina, 2015 <i>Number of persons engaged and salaries & wages by citizenship and sex, 2015</i></p>	47
10	<p>Bilangan pekerja dan gaji & upah mengikut kemahiran dan jantina, 2015 <i>Number of persons engaged and salaries & wages by skill and sex, 2015</i></p>	48
11	<p>Bilangan pekerja mengikut kelulusan akademik dan jantina, 2015 <i>Number of persons engaged by academic qualification and sex, 2015</i></p>	49
12	<p>Nilai harta tetap mengikut jenis harta, 2015 <i>Value of fixed assets by type of assets, 2015</i></p>	50
13	<p>Nilai input perantaraan mengikut kumpulan, 2015 <i>Value of intermediate input by group, 2015</i></p>	51
14	<p>Perangkaan utama pertubuhan milikan wanita dalam sektor bekalan elektrik, gas, wap dan pendinginan udara, 2015 <i>Principal statistics of women-owned establishment in electricity, gas, steam and air conditioning supply sector, 2015</i></p>	52
Lampiran Appendix	<p>Piawaian Klasifikasi Industri Malaysia 2008 Ver. 1.0 (Seksyen D : Bekalan elektrik, gas, wap dan pendinginan udara) <i>Malaysia Standard Industrial Classification 2008 Ver. 1.0 (Section D : Electricity, gas, steam and air conditioning supply)</i></p>	55

BAHAGIAN
PART **1**

PENEMUAN UTAMA
MAIN FINDINGS

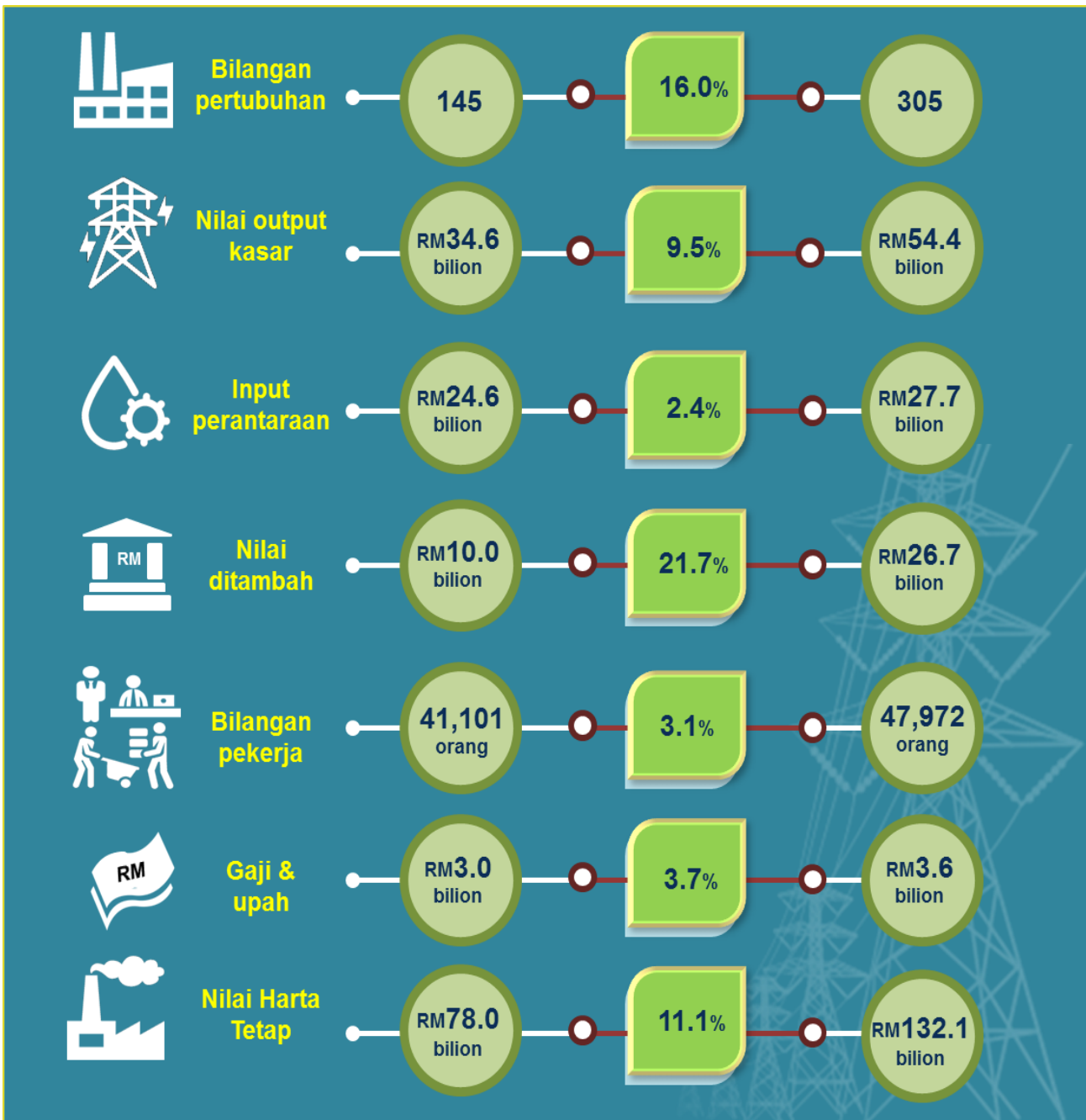
Muka surat ini sengaja dibiarkan kosong
This page is deliberately left blank



BANCI EKONOMI 2016



PENEMUAN UTAMA SEKTOR BEKALAN ELEKTRIK, GAS, WAP DAN PENDINGINAN UDARA





ECONOMIC CENSUS 2016



MAIN FINDINGS ELECTRICITY, GAS, STEAM AND AIR CONDITIONING SUPPLY SECTOR

2010 CAGR 2015



Number of establishments

145

16.0%

305



Value of gross output

RM34.6 billion

9.5%

RM54.4 billion



Intermediate input

RM24.6 billion

2.4%

RM27.7 billion



Value added

RM10.0 billion

21.7%

RM26.7 billion



Number of persons engaged

41,101 persons

3.1%

47,972 persons



Salaries & wages

RM3.0 billion

3.7%

RM3.6 billion



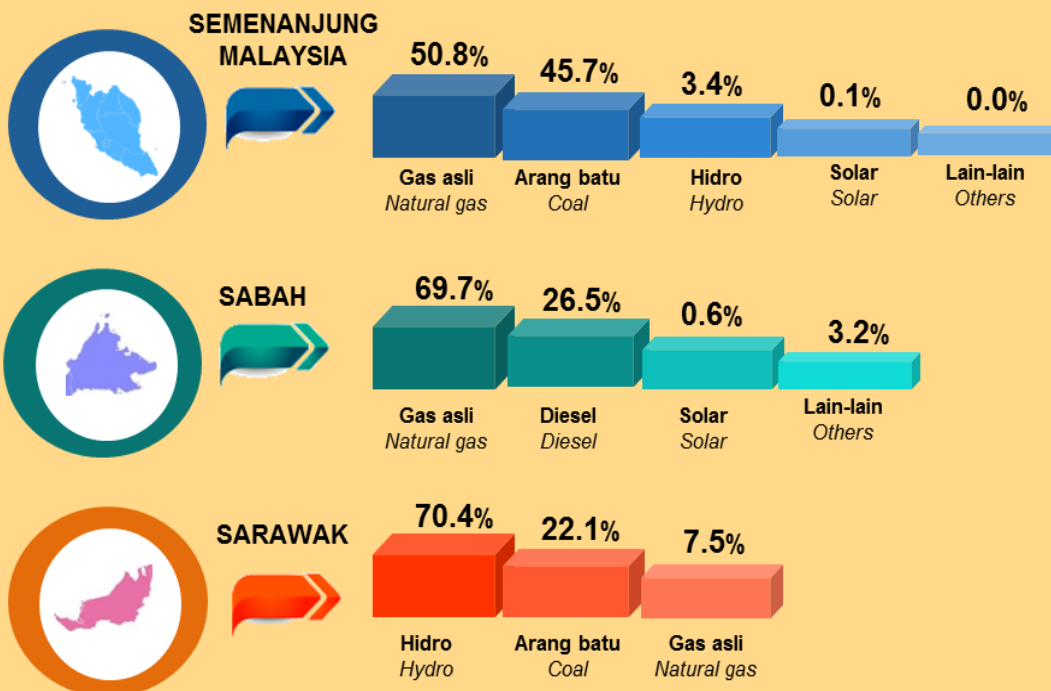
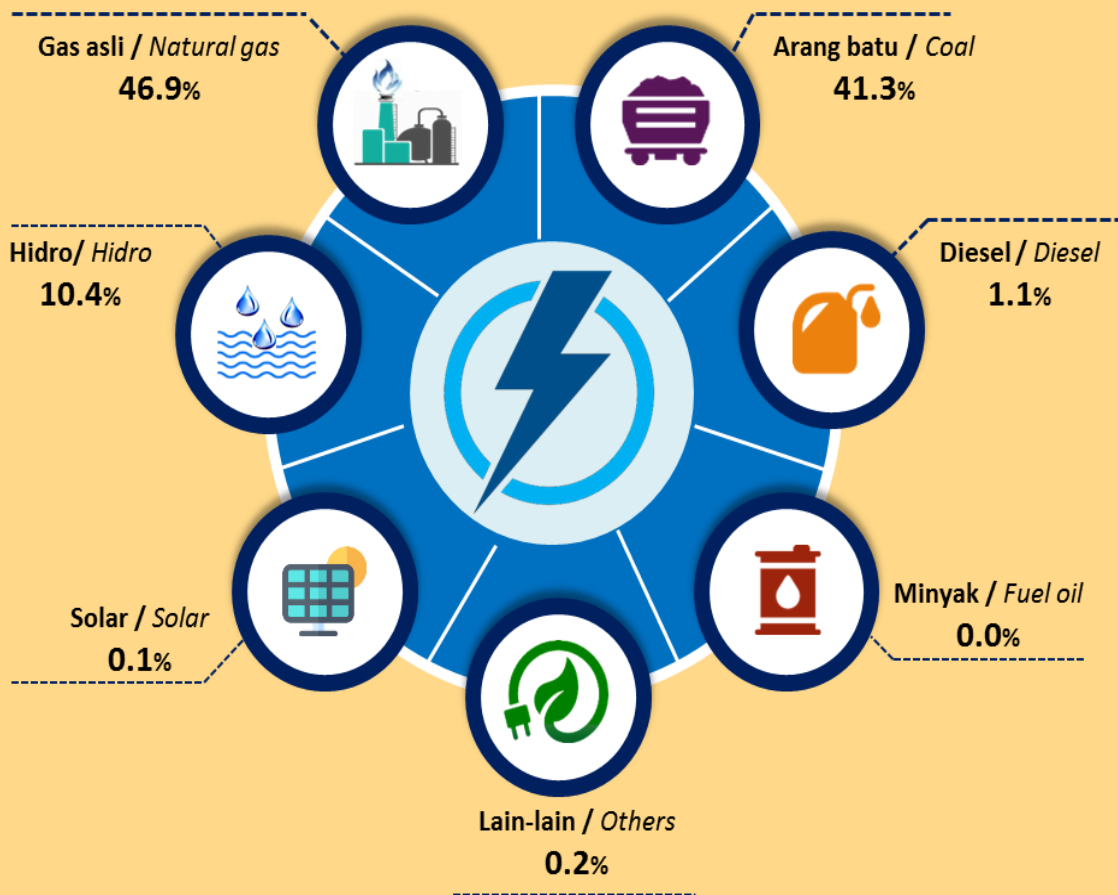
Value of fixed assets

RM78.0 billion

11.1%

RM132.1 billion

PENJANAAN TENAGA ELEKTRIK DI MALAYSIA, 2015 ELECTRICITY GENERATION IN MALAYSIA, 2015



Sumber : Banci Ekonomi 2016
Source : Economic Census 2016

Muka surat ini sengaja dibiarkan kosong
This page is deliberately left blank

BAHAGIAN
PART **2**

RINGKASAN PENEMUAN
SUMMARY OF FINDINGS

Muka surat ini sengaja dibiarkan kosong
This page is deliberately left blank

1. PENGENALAN

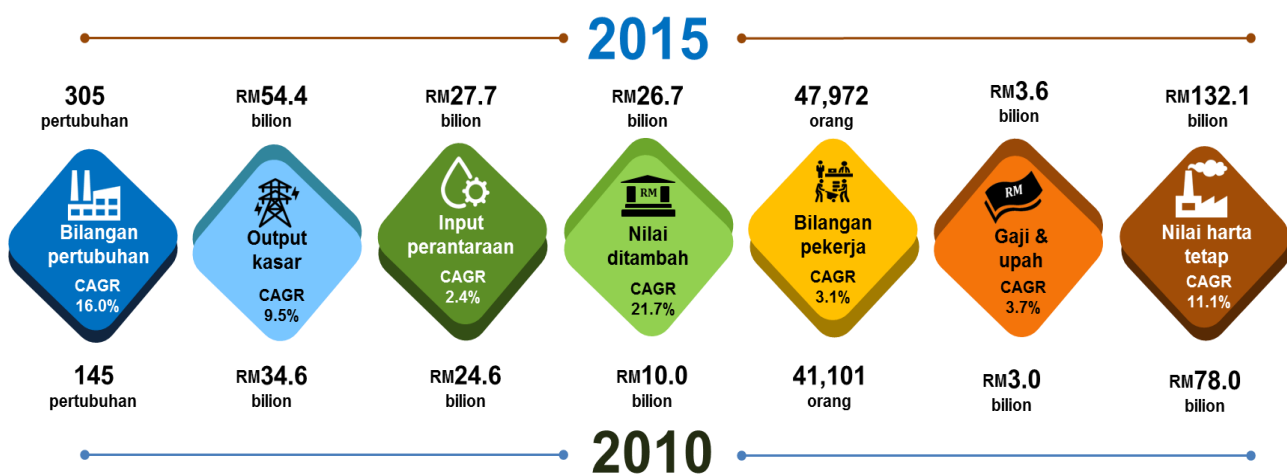
Laporan ini memaparkan perangkaan sektor bekalan elektrik, gas, wap dan pendinginan udara yang dijalankan pada tahun 2016 bagi tahun rujukan 2015. Sebanyak 305 pertubuhan terlibat dalam banci ini berbanding 145 pertubuhan pada tahun 2010 dengan kadar pertumbuhan tahunan dikompaun (CAGR) 16.0%.

2. PRESTASI SEKTOR BEKALAN ELEKTRIK, GAS, WAP DAN PENDINGINAN UDARA

Pada tahun 2015, sektor bekalan elektrik, gas, wap dan pendinginan udara mencatatkan pertumbuhan positif bagi semua indikator utama seperti yang ditunjukkan di Paparan 1. Nilai output kasar sebanyak RM54.4 bilion pada tahun 2015 berbanding RM34.6 bilion pada tahun 2010 dengan CAGR 9.5%. Manakala, nilai input perantaraan mencatatkan RM27.7 bilion dengan CAGR 2.4% berbanding RM24.6 bilion pada tahun 2010 menjadikan jumlah nilai ditambah kepada RM26.7 bilion.

Bilangan pekerja dalam sektor ini seramai 47,972 orang berbanding 41,101 orang pada tahun 2010 dengan CAGR 3.1%. Selaras dengan pertambahan dalam jumlah pekerja, jumlah gaji & upah yang dibayar juga meningkat dengan CAGR 3.7% kepada RM3.6 bilion pada tahun 2015 berbanding RM3.0 bilion pada tahun 2010. Nilai harta tetap dimiliki berkembang kepada RM132.1 bilion pada tahun 2015 daripada RM78.0 bilion pada tahun 2010 dengan CAGR 11.1%.

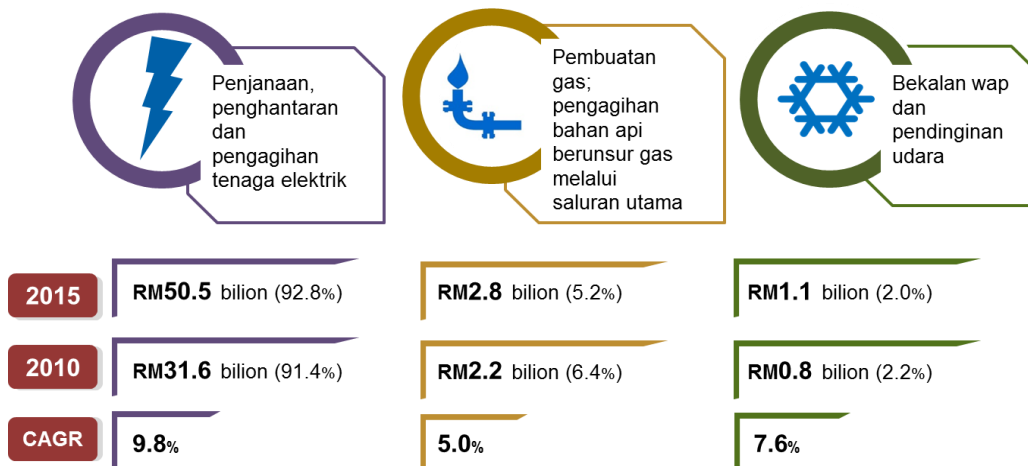
Paparan 1 Prestasi sektor bekalan elektrik, gas, wap dan pendinginan udara, 2010 dan 2015



3. NILAI OUTPUT KASAR MENGIKUT KUMPULAN INDUSTRI

Kumpulan industri penjaanaan, penghantaran dan pengagihan tenaga elektrik menjadi penyumbang utama kepada nilai output kasar dengan nilai RM50.5 bilion (92.8%) berbanding RM31.6 bilion (91.4%) pada tahun 2010. Nilai output kasar bagi kumpulan industri ini terus menunjukkan perkembangan pesat, didorong oleh pertambahan kapasiti penjaanaan tenaga elektrik susulan daripada pengoperasian loji jana kuasa elektrik baharu.

Paparan 2 Nilai output kasar mengikut kumpulan industri, 2010 dan 2015

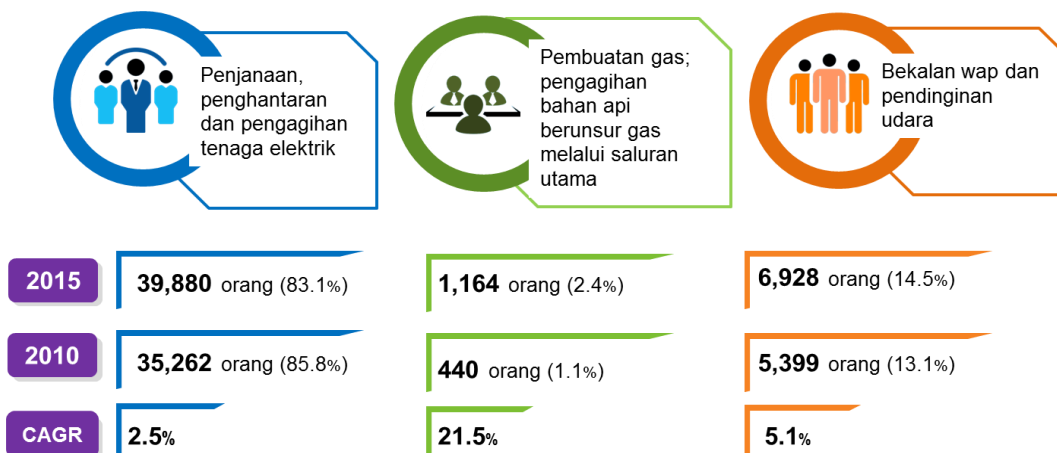


4. BILANGAN PEKERJA DAN GAJI & UPAH

4.1 BILANGAN PEKERJA MENGIKUT KUMPULAN INDUSTRI, 2010 DAN 2015

Kumpulan industri penjaanaan, penghantaran dan pengagihan tenaga elektrik kekal sebagai penyumbang utama bilangan pekerja iaitu seramai 39,880 orang (83.1%). Ini diikuti oleh kumpulan industri bekalan wap dan pendinginan udara, seramai 6,928 orang (14.5%) dan pembuatan gas; pengagihan bahan api berunsur gas melalui saluran utama seramai 1,164 orang (2.4%).

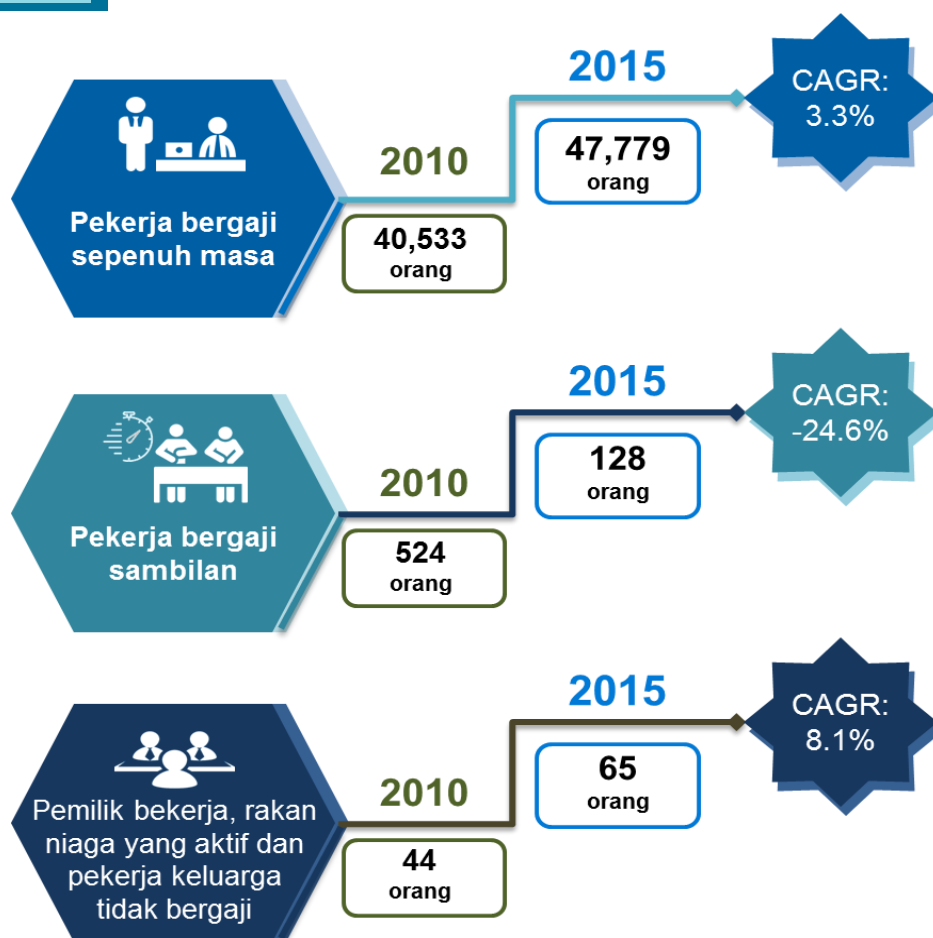
Paparan 3 Bilangan pekerja mengikut kumpulan industri, 2010 dan 2015



4.2 PEKERJA MENGIKUT KATEGORI PEKERJA, 2010 DAN 2015

Seramai 47,779 orang (99.6%) pekerja dalam sektor ini adalah pekerja bergaji sepenuh masa dengan CAGR sebanyak 3.3%. Pekerja bergaji sambilan menyusut sebanyak 24.6% kepada 128 orang (0.3%) pada tahun 2015 berbanding 524 orang pada tahun 2010. Sementara itu, pemilik yang bekerja, rakan niaga yang aktif dan pekerja keluarga tanpa gaji adalah seramai 65 orang (0.1%) berbanding 44 orang pada tahun 2010.

Paparan 4 Bilangan pekerja mengikut kategori pekerja, 2010 dan 2015











Sumbangan (%) Tahun	Pekerja bergaji sepenuh masa	Pekerja bergaji sambilan	Pemilik bekerja, rakan niaga yang aktif dan pekerja keluarga tidak bergaji
2015	99.6	0.3	0.1
2010	98.6	1.3	0.1

4.3 GAJI & UPAH BAGI PEKERJA BERGAJI SEPENUH MASA MENGIKUT KATEGORI PEKERJAAN, 2015

Sektor ini dipelopori oleh juruteknik dan profesional bersekutu yang berjumlah 12,092 orang pekerja (25.3%) daripada keseluruhan pekerja bergaji sepenuh masa pada tahun 2015 dengan menerima bayaran gaji & upah berjumlah RM1,197.1 juta (33.1%). Ini diikuti oleh kategori operator mesin dan loji dan pemasang seramai 10,668 orang (22.4%) dengan menerima gaji & upah berjumlah RM380.6 juta (10.5%).

Sementara itu, pekerja kategori pengurusan mencatatkan purata gaji tahunan tertinggi sebanyak RM183,823 diikuti oleh kategori profesional dan penyelidik sebanyak RM102,507. Pekerja asas pula merekodkan purata gaji tahunan terendah sebanyak RM21,298.

Paparan 5 Gaji & upah bagi pekerja bergaji sepenuh masa mengikut kategori pekerjaan, 2015

	Bil. pekerja (orang)	Gaji & upah (RM juta)	Purata gaji & upah setahun (RM)
 Pengurus	6,122 (12.8%)	1,125.4 (31.1%)	183,823
 Profesional dan Penyelidik	1,928 (4.0%)	197.6 (5.5%)	102,507
 Juruteknik dan Profesional Bersekutu	12,092 (25.3%)	1,197.1 (33.1%)	99,002
 Pekerja Sokongan Perkeranian	6,777 (14.2%)	371.3 (10.2%)	54,795
 Pekerja Perkhidmatan dan Jualan	1,665 (3.5%)	81.4 (2.2%)	48,918
 Pekerja Kemahiran & Pertukangan yang berkaitan	3,168 (6.6%)	152.6 (4.2%)	48,158
 Operator mesin & loji dan pemasang	10,668 (22.4%)	380.6 (10.5%)	35,681
 Pekerja asas	5,359 (11.2%)	114.1 (3.2%)	21,298
Jumlah pekerja bergaji sepenuh masa	47,779	3,620.1	75,771

4.4 PEKERJA MENGIKUT KELULUSAN, 2010 DAN 2015

Pekerja dengan kelulusan SPM/SPM(V) atau setaraf dan ke bawah menjadi penyumbang utama bilangan pekerja dalam sektor ini berjumlah 32,486 orang (67.7%) pada tahun 2015 berbanding 30,189 orang (73.4%) pada tahun 2010 dengan CAGR 1.5%. Ini diikuti oleh pekerja yang berkelulusan Ijazah universiti dan ke atas seramai 8,211 orang (17.1%) dan pekerja mempunyai kelulusan Diploma/STPM atau yang setaraf seramai 7,275 orang (15.2%).

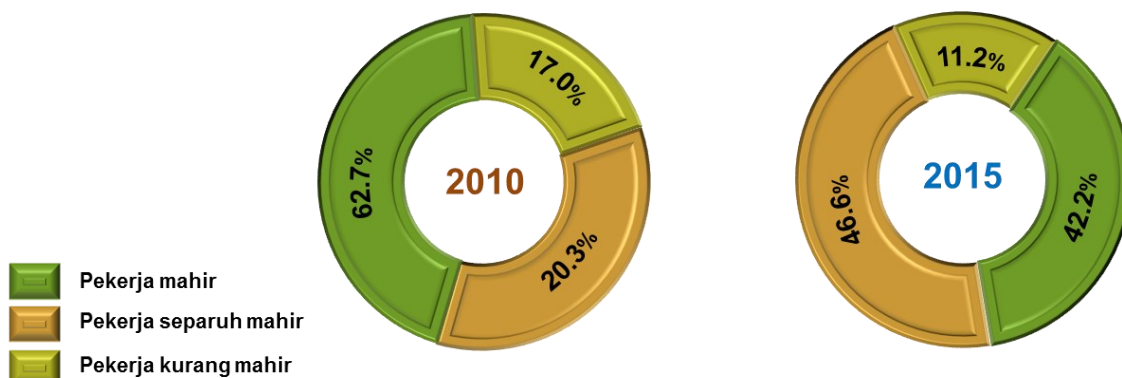
Paparan 6 Pekerja mengikut kelulusan, 2010 dan 2015

Kelulusan	2010 (orang)	Sumbangan (%)	2015 (orang)	Sumbangan (%)	CAGR (%)
Ijazah universiti dan ke atas	5,206	12.7	8,211	17.1	9.5
Diploma/STPM atau yang setaraf	5,706	13.9	7,275	15.2	5.0
SPM/SPMV atau yang setaraf dan ke bawah	30,189	73.4	32,486	67.7	1.5
Jumlah	41,101	100.0	47,972	100.0	3.1

4.5 PEKERJA MENGIKUT KATEGORI KEMAHIRAN, 2010 DAN 2015

Kategori pekerja separuh mahir mencatatkan bilangan pekerja tertinggi seramai 22,278 orang (46.6%) dengan CAGR 26.5% daripada tahun 2010 hingga 2015. Ini diikuti oleh pekerja mahir berjumlah 20,142 orang (42.2%), manakala pekerja kurang mahir seramai 5,359 orang (11.2%) seperti yang ditunjukkan di Paparan 7.

Paparan 7 Pekerja mengikut kategori kemahiran, 2010 dan 2015

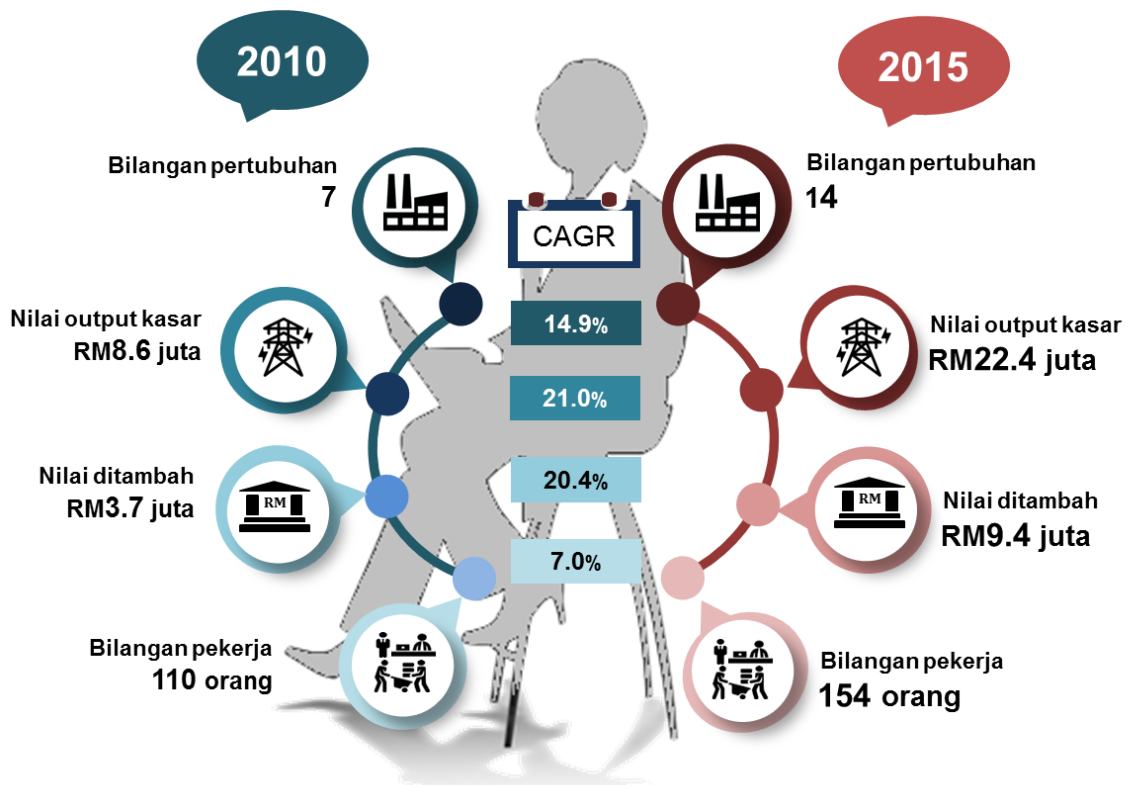


5. PERTUBUHAN MILIKAN WANITA

Pada tahun 2015 bilangan pertubuhan milikan wanita meningkat kepada 14 pertubuhan berbanding 7 pertubuhan pada tahun 2010 dan menyumbang 4.6% kepada keseluruhan bilangan pertubuhan dalam sektor bekalan elektrik, gas, wap dan pendinginan udara.

Selain itu, nilai output kasar yang dilaporkan sebanyak RM22.4 juta pada tahun 2015 berbanding RM8.6 juta pada tahun 2010 dengan CAGR 21.0%. Nilai ditambah turut berkembang dengan CAGR 20.4% kepada RM9.4 juta pada tahun 2015 berbanding RM3.7 juta pada tahun 2010. Jumlah pekerja bagi pertubuhan milikan wanita turut menunjukkan peningkatan kepada 154 orang berbanding 110 orang pada tahun 2010.

Paparan 8 Pertubuhan milikan wanita, 2010 dan 2015



1. INTRODUCTION

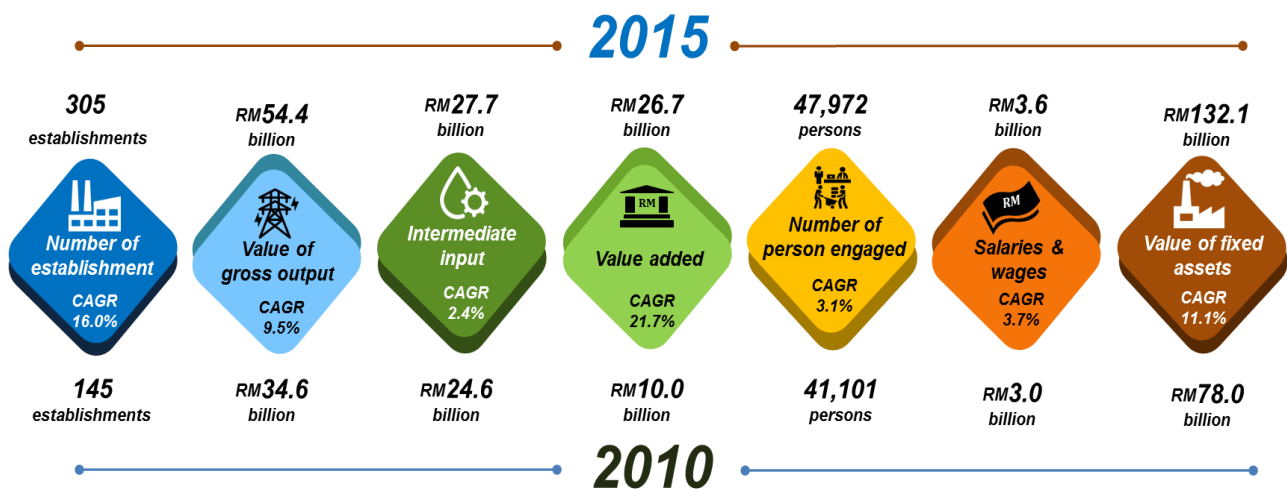
This report presents statistics on electricity, gas, steam and air conditioning supply sector conducted in 2016 for reference year 2015. A total of 305 establishments were involved in this census as compared to 145 establishments in 2010 with compound annual growth rate (CAGR) of 16.0%.

2. PERFORMANCE OF THE ELECTRICITY, GAS, STEAM AND AIR CONDITIONING SUPPLY SECTOR

In 2015, electricity, gas, steam and air conditioning supply sector recorded a positive growth in all main indicators as shown in Exhibit 1. Value of gross output registered RM54.4 billion in 2015 as compared to RM34.6 billion in 2010 with CAGR 9.5%. Whilst, the intermediate input showed RM27.7 billion with CAGR of 2.4% as compared to RM24.6 billion in 2010, resulting in value added of RM26.7 billion.

Total number of persons engaged in this sector was 47,972 persons as compared to 41,101 persons in 2010, with CAGR of 3.1%. In line with an increase in the total number of persons engaged, the total salaries and wages also grew 3.7% in CAGR to RM3.6 billion in 2015 as compared to RM3.0 billion in 2010. The value of fixed assets owned expanded to RM132.1 billion in 2015 from RM78.0 billion in 2010 with CAGR of 11.1%.

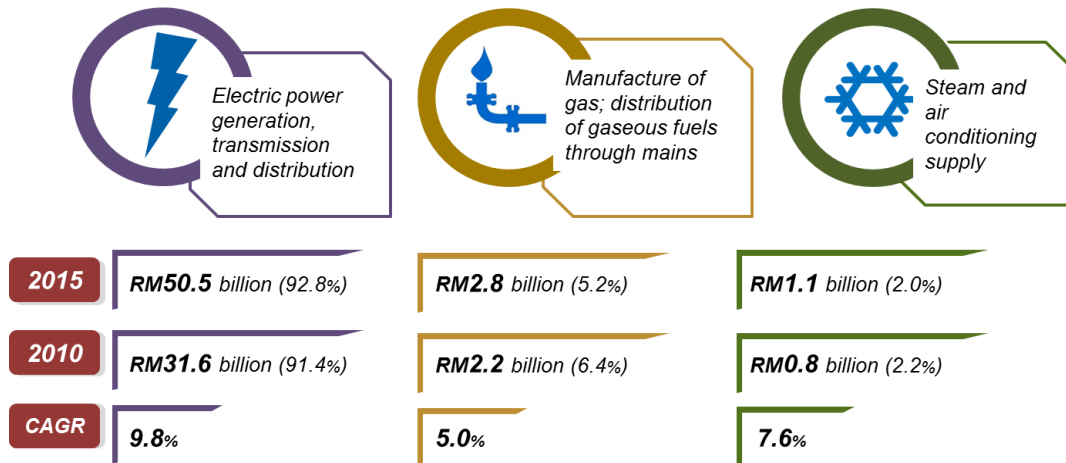
Exhibit 1 Performance of the electricity, gas, steam and air conditioning supply sector, 2010 and 2015



3. VALUE OF GROSS OUTPUT BY INDUSTRY GROUP

The electric power generation, transmission and distribution industry group was the main contributor to the value of gross output of RM50.5 billion (92.8%) as compared to RM31.6 billion (91.4%) in 2010. The value of gross output of this industry group continued its expansion, driven by the increase in electricity generation capacity due to the operation of new power plants.

Exhibit 2 Value of gross output by industry group, 2010 and 2015

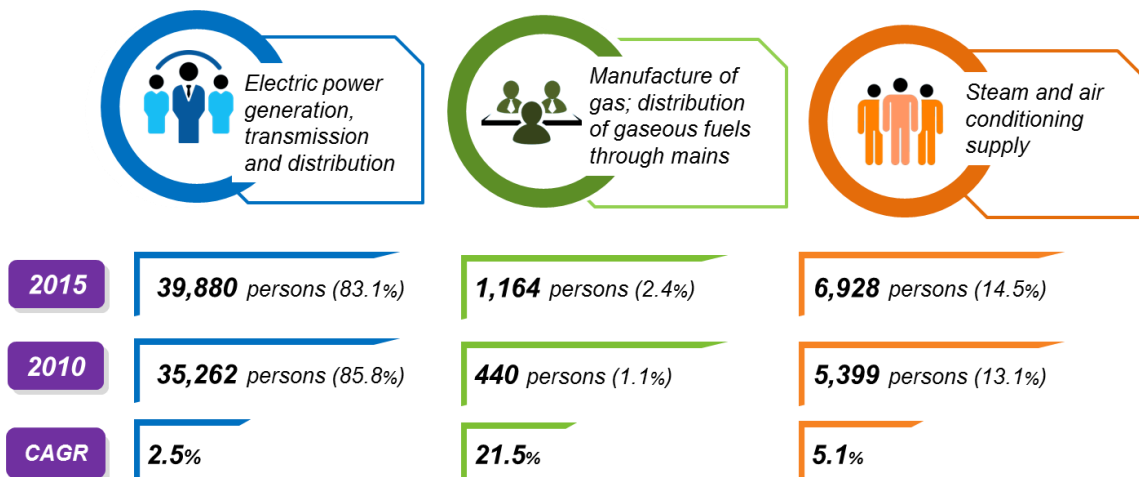


4. NUMBER OF PERSONS ENGAGED, SALARIES AND WAGES

4.1 NUMBER OF PERSONS ENGAGED BY INDUSTRY GROUP, 2010 AND 2015

The electric power generation, transmission and distribution industry group remained as a major contributor to the total number of persons engaged of 39,880 persons (83.1%). This was followed by steam and air conditioning supply, 6,928 persons (14.5%) and manufacture of gas; distribution of gaseous fuels through mains a total of 1,164 persons (2.4%).

Exhibit 3 Number of persons engaged by industry group, 2010 and 2015

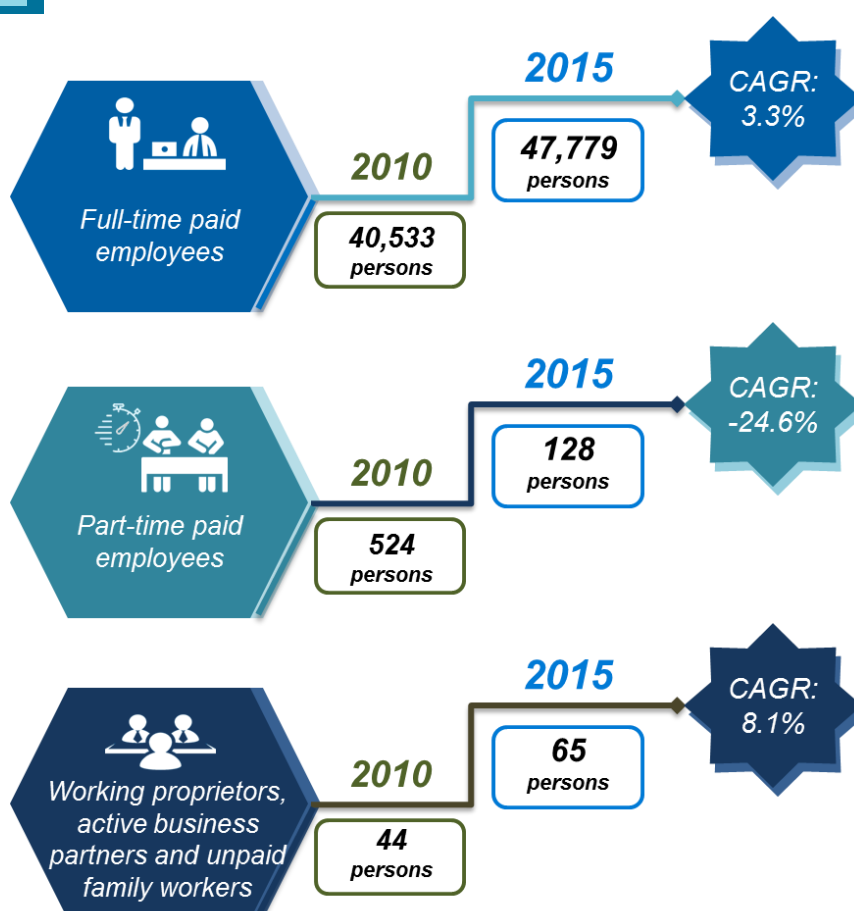


SUMMARY OF FINDINGS

4.2 NUMBER OF PERSONS ENGAGED BY CATEGORY OF WORKERS, 2010 AND 2015

A total of 47,779 persons (99.6%) of the workers in the sector were full-time paid employees with CAGR of 3.3%. Part-time paid employees decreased by 24.6% to 128 persons (0.3%) in 2015 as compared to 524 persons in 2010. Meanwhile, working proprietors, active business partners and unpaid family workers were 65 persons (0.1%) as compared to 44 persons in 2010.

Exhibit 4 Number of persons engaged by category of workers, 2010 and 2015



Share (%) Year	Full-time paid employees	Part-time paid employees	Working proprietors, active business partners and unpaid family workers
2015	99.6	0.3	0.1
2010	98.6	1.3	0.1

SUMMARY OF FINDINGS









4.3 SALARIES & WAGES OF FULL-TIME PAID EMPLOYEES BY CATEGORY OF OCCUPATION, 2015

This sector was dominated by technicians and associate professionals that make up to 12,092 workers (25.3%) of the total full-time paid employees in 2015 and received annual salaries & wages paid amounted to RM1,197.1 million (33.1%). This was followed by plant and machine operators and assemblers with a total of 10,668 persons (22.4%) with salaries & wages received amounted RM380.6 million (10.5%).

Meanwhile, the managerial category recorded the highest average annual salaries & wages received of RM183,823 followed by the professionals and researchers of RM102,507. Elementary workers recorded the lowest average annual salaries & wages of RM21,298.

Exhibit 5

Salaries & wages of full-time paid employees by category of occupation, 2015

	Number of persons engaged	Salaries & wages (RM million)	Average salaries & wages per annum (RM)
 Managers	6,122 (12.8%)	1,125.4 (31.1%)	183,823
 Professionals and Researcher	1,928 (4.0%)	197.6 (5.5%)	102,507
 Technicians and Associate Professionals	12,092 (25.3%)	1,197.1 (33.1%)	99,002
 Clerical Support Workers	6,777 (14.2%)	371.3 (10.2%)	54,795
 Service and Sales Workers	1,665 (3.5%)	81.4 (2.2%)	48,918
 Craft and Related Trades	3,168 (6.6%)	152.6 (4.2%)	48,158
 Plant and Machine Operators, and Assemblers	10,668 (22.4%)	380.6 (10.5%)	35,681
 Elementary Occupations	5,359 (11.2%)	114.1 (3.2%)	21,298
Total number of persons engaged	47,779	3,620.1	75,771

SUMMARY OF FINDINGS

4.4 NUMBER OF PERSONS ENGAGED BY QUALIFICATION, 2010 and 2015

Employee with the qualification of SPM/SPMV or equivalent and below was the main contributor to the total number of persons engaged in this sector amounted to 32,486 persons (67.7%) in 2015 as compared with 30,189 persons (73.4%) in 2010 with CAGR of 1.5%. This was followed by the employees who holds a university Degree and above a total of 8,211 persons (17.1%) and employees who have Diploma/STPM or equivalent total of 7,275 persons (15.2%).

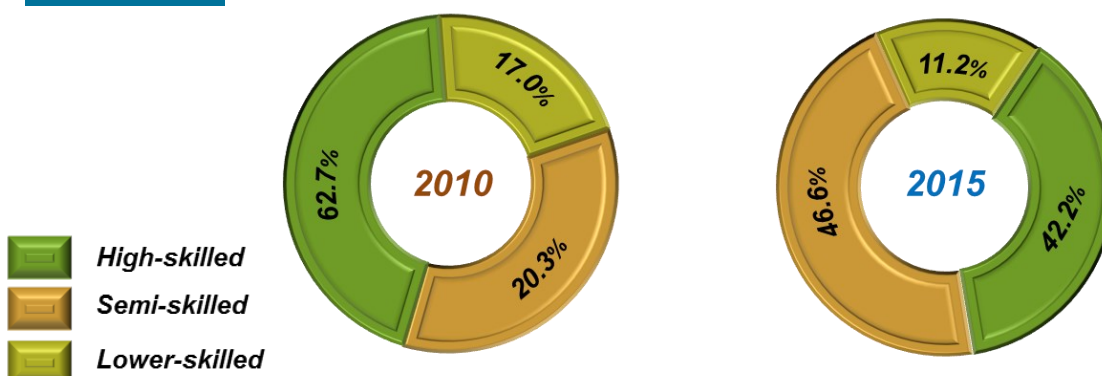
Exhibit 6 Number of persons engaged by qualification, 2010 and 2015

Qualification	2010 (persons)	Share (%)	2015 (persons)	Share (%)	CAGR (%)
University degree and above	5,206	12.7	8,211	17.1	9.5
Diploma/STPM or equivalent	5,706	13.9	7,275	15.2	5.0
SPM/SPMV or equivalent and below	30,189	73.4	32,486	67.7	1.5
Total	41,101	100.0	47,972	100.0	3.1

4.5 NUMBER OF PERSON ENGAGED BY SKILL LEVEL, 2010 AND 2015

Semi-skilled worker category recorded the highest total number of persons engaged of 22,278 persons (46.6%) with CAGR of 26.5% from 2010 to 2015. This was followed by high-skilled workers of 20,142 persons (42.2%) and lower-skilled workers a total of 5,359 persons (11.2%) as shown in Exhibit 7.

Exhibit 7 Number of persons engaged by skill level, 2010 and 2015

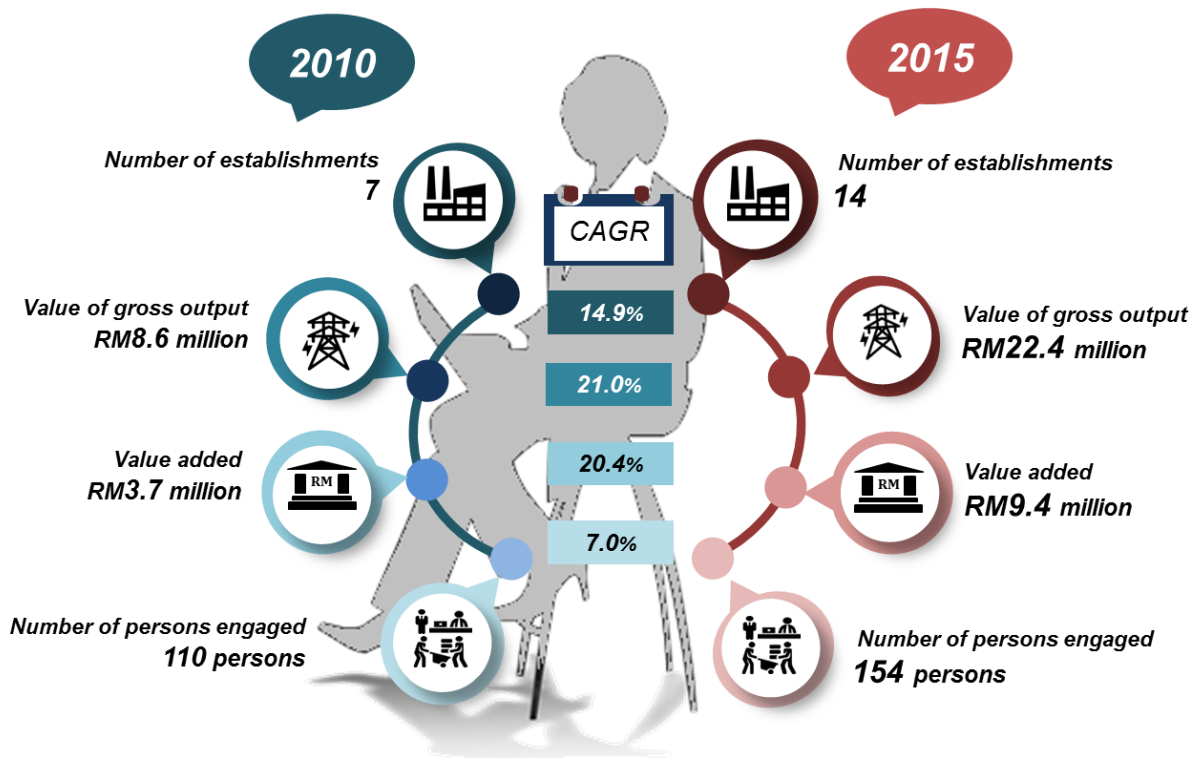


5. WOMEN-OWNED ESTABLISHMENTS

By 2015, the number of women-owned establishments increased to 14 establishments from 7 establishments in 2010 and accounted for 4.6% of the total number of establishments in the electricity, gas, steam and air conditioning supply sector.

Additionally, the value of gross output reported amounted to RM22.4 million in 2015 as compare to RM8.6 million in 2010, with CAGR of 21.0%. Value added also grew with CAGR of 20.4% to RM9.4 million in 2015 as compare to RM3.7 million in 2010. The number of employees for women-owned establishments showed an increase of 154 persons as compare to 110 establishments in 2010.

Exhibit 8 Women-owned establishments, 2010 and 2015



BAHAGIAN
PART **3**

NOTA TEKNIKAL
TECHNICAL NOTES

Muka surat ini sengaja dibiarkan kosong
This page is deliberately left blank

- 1. Skop dan liputan**
- Banci ini meliputi pertubuhan berdaftar yang terlibat dengan aktiviti bekalan elektrik, gas, wap dan pendinginan udara sebagai kegiatan utama. Sebanyak 8 industri diliputi berdasarkan kategori yang dikelaskan di bawah Seksyen D, Piawaian Klasifikasi Industri Malaysia (MSIC), 2008 Ver.1.0. Senarai lengkap industri yang diliputi ditunjukkan di Lampiran **(muka surat 55)**.
- Penerbitan ini memberikan semakan data bagi laporan Penyiasatan Bekalan Elektrik, Gas, Wap dan Pendinginan Udara 2014. Semakan adalah berdasarkan data terkini bagi tahun 2014 yang dibekalkan oleh pembekal data.
- 2. Sumber rangka**
- Sumber utama rangka banci ialah syarikat yang berdaftar dengan Suruhanjaya Syarikat Malaysia (SSM), Kementerian Tenaga, Teknologi Hijau dan Air (KeTTHA), Suruhanjaya Tenaga (ST), Tenaga Nasional Berhad (TNB), *Sabah Electricity Sendirian Berhad (SESB)* dan *Sarawak Energy Berhad (SESCO)*. Rangka dikemaskini setiap tahun dengan mengambil kira pertubuhan baru dan merekod sebarang perubahan dalam status pertubuhan seperti tutup, tidak beroperasi, perubahan jenis aktiviti dan lokasi atau alamat pos.
- 3. Jenis aktiviti perniagaan**
- Jenis aktiviti perniagaan merujuk kepada aktiviti utama dan sekunder. Aktiviti utama merujuk kepada aktiviti yang mana pertubuhan menggunakan sebahagian besar daripada sumbernya atau yang ia memperoleh sebahagian besar daripada pendapatannya. Aktiviti sekunder didefinisikan sebagai aktiviti sampingan kepada aktiviti utamanya berdasarkan kepada Piawaian Klasifikasi Industri Malaysia (MSIC), 2008 Ver. 1.0.
- 4. Konsep dan definisi**
- Konsep dan definisi yang digunakan adalah selari dengan *International Recommendations for Industrial Statistics, United Nations Statistical Division*. Takrif bekalan elektrik, gas, wap dan pendinginan udara yang digunakan dalam banci ini adalah selaras dengan “Piawaian Klasifikasi Industri Malaysia (MSIC), 2008 Ver. 1.0.

5. Unit melapor

Unit melapor bagi banci ini ialah **pertubuhan**. Sesebuah pertubuhan ditakrifkan sebagai “satu unit ekonomi yang bergiat di bawah satu hak milik atau penguasaan tunggal, iaitu di bawah satu entiti yang sah. Ia menjalankan satu jenis aktiviti ekonomi utama di satu tempat/lokasi fizikal”. Setiap pertubuhan diberikan klasifikasi industri berdasarkan aktiviti utamanya. Bagi pertubuhan yang menjalankan pelbagai aktiviti, unit yang bergiat dalam aktiviti yang berasingan dalam satu lokasi yang sama terdiri daripada entiti pertubuhan yang berbeza. Oleh itu, setiap cawangan daripada organisasi yang mempunyai pelbagai cawangan di lokasi yang berbeza dari segi konsep dianggap sebagai pertubuhan yang berlainan. Pertubuhan berkenaan diminta memberikan penyata yang berasingan bagi setiap kegiatannya dari segi nilai. Walau bagaimanapun, dari segi praktiknya akaun biasanya disediakan secara berpusat kerana kesukaran untuk memperoleh data yang berasingan bagi setiap unit atau cawangan. Entiti atau enterprise ini akan di anggap sebagai satu unit melapor dan dibenarkan mengemukakan soal selidik yang menggabungkan semua unit atau cawangannya.

6. Nilai output kasar

Nilai output kasar ditakrifkan dengan memasukkan perkara berikut:
 Nilai jualan bekalan elektrik, gas, wap dan pendinginan udara

- + Nilai barang yang dijual dalam keadaan yang sama seperti dibeli
- Kos barang yang dijual dalam keadaan yang sama seperti dibeli
- + Perbelanjaan modal ke atas binaan sendiri
- + Pendapatan daripada perkhidmatan perindustrian yang diberi kepada orang lain
- + Pendapatan daripada kerja perindustrian lain (cth. pembinaan, kuari, dll.)
- + Penerimaan bayaran daripada skrap, produk sisa, dll. yang dijual kepada orang lain
- + Penerimaan komisen dan brokeraj
- + Semua nilai output lain (seperti penerimaan perkhidmatan bukan perindustrian, cth. bayaran pengurusan, sewa harta dll.)
- + Stok akhir barang siap (pengeluaran sendiri)
- Stok awal barang siap (pengeluaran sendiri)
- + Stok akhir barang lain
- Stok awal barang lain
- + Perbelanjaan penyelidikan dan pembangunan (Dalam)

- 7. Nilai input perantaraan** Nilai input perantaraan ditakrifkan dengan memasukkan perkara berikut :
 Nilai bahan mentah dan bekalan yang digunakan
- + Kos kerja perindustrian yang dibuat oleh orang lain
 - + Kos bahan dan bekas pembungkus yang digunakan
 - + Tenaga elektrik dan air yang dibeli
 - + Nilai bahan pembakar, pelincir dan gas yang digunakan
 - + Kos bahan yang digunakan bagi pembaikan dan penyelenggaraan harta tetap (termasuk pembayaran kepada pihak lain ke atas kerja ini)
 - + Pembayaran terhadap perkhidmatan bukan perindustrian (termasuk bayaran bagi pengangkutan keluar barang, perjalanan, pengurusan, perundangan, teknologi maklumat, pengiklanan, bank, pos, telekomunikasi, dll.)
 - + Semua kos input lain (termasuk kos latihan dan nilai pakaian percuma yang disediakan kepada pekerja)
- 8. Nilai ditambah** Nilai ditambah ialah tambahan kepada nilai komoditi dan perkhidmatan yang disumbangkan oleh sesebuah pertubuhan bekalan elektrik, gas, wap dan pendinginan udara. Nilai ditambah diperoleh daripada perbezaan antara nilai output kasar dengan nilai input perantaraan.
- 9. Bilangan pekerja** Bilangan pekerja meliputi semua orang yang diambil bekerja pada bulan Disember atau pada tempoh pembayaran gaji terakhir pada tahun rujukan. Bilangan orang yang bekerja dikategorikan seperti berikut:
- i. Pemilik yang bekerja dan rakan niaga yang aktif**
 Kategori ini merujuk kepada semua pemilik perseorangan dan rakan niaga, sambilan atau sepenuh masa, yang bekerja dengan aktif dalam pertubuhan. Justeru itu, ia tidak termasuk rakan niaga yang tidak aktif.
- ii. Pekerja keluarga tanpa gaji**
 Kategori ini meliputi semua ahli isi rumah pemilik pertubuhan yang melaksanakan kerja tertentu (sepenuh masa atau sambilan) dan bekerja sekurang-kurangnya satu pertiga daripada waktu bekerja biasa yang diamalkan oleh pertubuhan berkenaan tanpa mendapat bayaran secara '*regular*' sama ada dalam bentuk wang tunai atau mata benda bagi kerja yang dilakukan. Biasanya pekerja berkenaan mendapat makanan, tempat tinggal dan bantuan lain sebagai sebahagian daripada ahli isi rumah pemilik dan terus mendapatnya sama ada mereka bekerja atau tidak di pertubuhan tersebut.

iii. Pekerja sepenuh masa

Ia merujuk kepada semua pekerja bergaji yang bekerja sekurang-kurangnya 6 jam sehari dan sekurang-kurangnya 20 hari sebulan.

iv. Pekerja sambilan

Ia merujuk kepada semua pekerja bergaji yang bekerja kurang daripada 6 jam sehari dan/atau kurang daripada 20 hari sebulan.

10. Kategori kemahiran

Kategori kemahiran pekerjaan telah dikelaskan berdasarkan Piawaian Pengkelasan Pekerjaan Malaysia (MASCO) 2013 adalah seperti berikut:

i) Pekerja mahir

Pengurusan & Profesional dan Juruteknik dan Profesional Bersekutu

ii) Pekerja separuh mahir

Pekerja Perkeranian dan Pekerja Operatif: dan

iii) Pekerja kurang mahir

Pekerja Asas

11. Nilai harta tetap

Harta meliputi semua barang, baru atau terpakai, aset ketara dan aset tidak ketara yang mempunyai hayat produktif lebih daripada setahun (seperti tanah, bangunan, jentera dan alat kelengkapan, termasuk kelengkapan pengangkutan). Nilai yang dilaporkan adalah nilai seperti pada penghujung tahun rujukan dan ia mengikut buku akaun unit yang melaporkan. Ia termasuk perolehan baru sepanjang tahun berkenaan tetapi tidak termasuk harta yang dilupuskan pada tahun tersebut. Ianya adalah nilai bersih setelah ditolak susut nilai.

12. Pembundaran

Jumlah bagi komponen-komponen mungkin berbeza daripada jumlah besar di jadual penerbitan ini oleh kerana pembundaran angka.

13. Kadar pertumbuhan tahunan dikompaun

Pengiraan kadar pertumbuhan tahunan dikompaun (r) adalah berdasarkan formula berikut:

$$Y_t = Y_0(1+r)^t$$

Di mana r ,

$$r = \left[e^{\frac{1}{t} \ln \left(\frac{y_t}{y_0} \right)} - 1 \right] \times 100$$

Dimana,

Y_t = Nilai pada tahun semasa

Y_0 = Nilai pada tahun sebelum

t = Bilangan tahun, $Y_t - Y_0$

r = kadar pertumbuhan tahunan dikompaun

14. Simbol dan singkatan

Simbol dan huruf ringkas berikut telah digunakan di dalam keseluruhan penerbitan:

>	lebih daripada
<	kurang daripada
-	tiada
}	digabungkan
RM	Ringgit Malaysia
t.t.t.l.	tidak terkelas di tempat lain
0.0	kurang dari 0.05 bilion
n.a	tidak berkaitan
W.P	Wilayah Persekutuan

15. Takrif bekalan elektrik, gas, wap dan pendinginan udara

Bekalan elektrik, gas, wap dan pendinginan udara adalah ditakrifkan sebagai aktiviti pembekalan tenaga elektrik, gas asli, wap, air panas dan seumpamanya melalui satu infrastruktur (rangkaiannya) tetap bagi talian, saluran utama dan paip. Dimensi rangkaian ini tidak dapat ditentukan; juga termasuk pengagihan elektrik, gas, wap, air panas dan seumpamanya di kawasan perindustrian atau bangunan tempat kediaman. Oleh itu, seksyen ini termasuk operasi utiliti elektrik dan gas yang menjana, mengawal dan mengagih tenaga elektrik atau gas. Juga termasuk bekalan wap dan pendinginan udara

**16. Nilai jualan
bekalan elektrik,
gas, wap dan
pendinginan
udara**

Ia merujuk kepada nilai jualan daripada operasi penjanaan/penghantaran/pengeluaran sendiri pada tahun rujukan, sama ada ia telah dikeluarkan pada tahun tersebut atau sebelumnya. Hanya jualan yang dibuat daripada bahan mentah sendiri atau dibeli oleh pertubuhan tersebut sahaja yang perlu dilaporkan. Barang yang dibeli dan dijual semula tanpa melalui sebarang proses perubahan fizikal tidak diambil kira. Nilai jualan hendaklah sama dengan harga yang dikenakan oleh pertubuhan kepada pembeli. Semua bayaran duti dan cukai yang dikenakan ke atas produk hendaklah diambil kira. Rebat ke atas harga, diskaun dan nilai bagi pemulangan barang yang dibenarkan kepada pelanggan perlu ditolak.

**17. Nilai bahan
mentah yang
digunakan**

Merujuk kepada kos semua bahan mentah yang telah digunakan pada tahun rujukan untuk aktiviti penjanaan/pengeluaran bagi pertubuhan tersebut. Nilai bahan mentah yang digunakan hendaklah pada kos bahan-bahan diserahkan kepada pertubuhan tolak diskaun dan pemulangan termasuk stok awal tolak stok akhir, bayaran pengangkutan, cukai dan duti terhadap bahan-bahan dan bayaran insurans.

- 1. Scope and coverage** *The census covered all registered establishments engaged in electricity, gas, steam and air conditioning supply activities as main activities. 8 industries were covered based on the classification identified in Section D, Malaysia Standard Industrial Classification (MSIC), 2008 Ver.1.0. The complete list of industries covered is shown in the Appendix (page 55).*
- This publication presents the revision of the Report of Electricity, Gas, Steam and Air Conditioning Supply for reference 2014. The revision were based on latest data reporting 2014 by data provider.*
- 2. Source of frame** *The main source of census is the Companies Commission of Malaysia (CCM), Ministry of Energy, Green Technology and Water, Energy Commission (KeTTHA), Tenaga Nasional Berhad (TNB), Sabah Electricity Sendirian Berhad (SESB) and Sarawak Energy Berhad (SESCO). The frame is updated annually by taking into account new establishments and to record any changes in the establishment status such as closed down, not in operation, change in types of activity and location or postal addresses.*
- 3. Type of business activity** *The type of business activity refers to both principal and secondary activities. The principal activity refers to the activity to which the establishment devoted most of its resources or to which it derived most of its income. Secondary activities are defined as those incidental or ancillary to the principal activity based on Malaysia Standard Industrial Classification (MSIC), 2008 Ver. 1.0.*
- 4. Concepts and definitions** *Concepts and definitions used are based on the recommendations of the United Nations Statistical Division. The definition of electricity, gas, steam and air conditioning supply used in this census follows the Malaysia Standard Industrial Classification (MSIC) 2008 Ver. 1.0.*

5. Reporting unit

The reporting unit used in the census was the **establishment**. An establishment is defined as “an economic unit engaged in one activity, under a single legal entity and operating in a single physical location”. Each establishment was assigned an industry classification based on its principal activity. In the case of a multi-activity entity, units engaged in separate activities in the same location constituted distinct establishments. Thus, each branch of a multi-branch organization at a different location was conceptually treated as a different establishment. The establishment was requested to give separate returns for each activity in terms of value. However, if in practice, the accounts were centrally kept such that it was not possible to obtain separate data for each individual unit or branch. The entity or enterprise was treated as a single reporting unit and allowed to submit a consolidated questionnaire covering all the units or branches.

6. Value of gross output

The value of gross output is defined to include the following elements:

Value of sales of electricity, gas, steam and air conditioning supply

- + Value of goods sold in the same condition as purchased
- Cost of goods sold in the same condition as purchased
- + Capital expenditure on own construction
- + Income from industrial services rendered to others
- + Income from other industrial work done (e.g. construction, quarry, etc.)
- + Receipt from scrap, waste product, etc. sold to others
- + Receipt from commission and brokerage earned
- + All other output (such as receipt from non-industrial services, eg. management fees received, income from rental of property, etc.)
- + Closing stocks of finished goods (own production)
- Opening stocks of finished goods (own production)
- + Closing stocks of other goods
- Opening stocks of other goods
- + Research and development expenditure (In-house)

7. Value of intermediate input

The value of intermediate input is defined to include the following elements:

Value of raw materials and supplies consumed

- + *Cost of industrial work done by others*
- + *Cost of packing materials and containers consumed*
- + *Electricity and water purchased*
- + *Value of fuel, lubricants and gas consumed*
- + *Cost of materials used for repairs and maintenance of assets (including payments to others for this work)*
- + *Payments for non-industrial services (including payments for carriage outwards of goods, travelling, management fees, information technology, advertising, bank charges, post, telecommunication, etc.)*
- + *All other input costs (including training and value of free wearing apparel provided for workers)*

8. Value added

Value added is the increment to the value of commodities and services contributed by the electricity, gas, steam and air conditioning supply sector establishment. Value added is derived as the difference between value of gross output and value of intermediate input.

9. Number of persons engaged

Employment covers all persons engaged during December or the last pay period of the reference year. The number of persons engaged was classified under the following categories:

i. Working proprietors and active business partner

This category refers to all individual proprietors and partners, part-time or full time, who are actively engaged in the work of the establishment. It therefore, excludes silent and inactive partners.

ii. Unpaid family workers

This category encompasses all persons (full-time or part time) in the household of the owners of the establishment who perform a specified job and work for a minimum of one third of the normal working time of the establishment but do not receive regular payment, either in cash or in kind for work done. Such workers generally receive food, shelter and other support as part of the household of an owner but this would continue whether they worked in the establishment or not.

iii. Full-time employees

It refers to all paid workers who work for at least 6 hours a day and 20 days a month.

iv. Part-time employees

It refers to all paid workers who work for less than 6 hours a day and/or less than 20 days a month.

10. Category of skilled

Category of skilled has also been categorized according to Malaysia Standard Classification of Occupations 2013 (MASCO) as follow:

i) High-skilled

Manager & Professionals and Technician & Associate Professionals;

ii) Semi-skilled

Clerical Occupations & Operative Workers; and

iii) Low-skilled

Elementary Workers

11. Value of fixed assets

Assets cover all goods, new or used, tangible or intangible, which have a normal economics life span of more than one year (e.g. land, building, machinery and equipment, including transport equipment). The value reported is as at the end of the reference year and is according to the books of accounts of the reporting unit. It includes additions during the year and excludes assets disposed off during the year. It is net of depreciation.

12. Rounding

The sum of components may not add up to the total in the tables presented in this publication due to rounding.

13. Compound annual growth rate

The calculation of compound annual growth rate (r) is based on the following formula:

$$Y_t = Y_o (1+r)^t$$

Where r,

$$r = \left[e^{\frac{1}{t} \ln \left(\frac{Y_t}{Y_o} \right)} - 1 \right] \times 100$$

Where,

Y_t = Value at current year

Y_o = Value at previous year

t = Number of year, $Y_t - Y_o$

r = Compound annual growth rate

14. Symbols and abbreviations

The following symbols and abbreviations have been used throughout the publication:

>	more than
<	less than
-	nil
}	combine
RM	Ringgit Malaysia
n.e.c	not elsewhere classified
0.0	less than 0.05 billion
n.a	not applicable
W.P	Wilayah Persekutuan

15. Definition of electricity, gas, steam and air conditioning supply

Electricity, gas, steam and air conditioning supply is defined as the activity of providing electric power, natural gas, steam, hot water and the like through a permanent infrastructure (network) of lines, mains and pipes. The dimension of the network is not decisive; also included are the distribution of electricity, gas, steam, hot water and the like in industrial parks or residential buildings. This section therefore includes the operation of electric and gas utilities, which generate, control and distribute electric power or gas. Also included is the provision of steam and air-conditioning.

16. Value of sales of electricity, gas, steam and air conditioning supply

It refers to the sales value from own generation/distribution/production during the reference year, either it has been produced in the year or earlier. Only sales made from the raw materials itself or purchased by the establishment need to be reported. Goods purchased for resale without any process of physical changes are not taken into account. The sales value should be equal to the price charged by the establishment to the buyer. All duties and taxes levies on the product should be taken into account. Rebates on price, discounts and value of returned goods allowed to customers should be rejected.

17. Value of raw material consumed

Refers to the cost of all raw materials used in reference year for the generation/production of the establishment. The raw materials used should be at the cost of the materials submitted to the establishment less discounts and returns including opening stock less closing stock, freight, taxes and duties paid on materials and insurance.

Muka surat ini sengaja dibiarkan kosong
This page is deliberately left blank

BAHAGIAN
PART **4**

**JADUAL
*TABLES***

Muka surat ini sengaja dibiarkan kosong
This page is deliberately left blank

Jadual 1 - Perangkaan utama sektor bekalan elektrik, gas, wap dan pendinginan udara, 2010 - 2015

Table 1 - Principal statistics of electricity, gas, steam and air conditioning supply sector, 2010 - 2015

Tahun	Bilangan pertubuhan	Nilai output kasar	Nilai input perantara	Nilai ditambah	Bilangan pekerja pada bulan Disember atau pada tempoh gaji akhir	Gaji & upah yang dibayar	Nilai harta tetap yang dimiliki pada akhir tahun
Year	Number of establishment	Value of gross output	Value of intermediate input	Value added	Number of persons engaged during December or the last pay period	Salaries & wages paid	Value of fixed assets owned as at the end of the year
		(RM Juta) (RM Million)	(RM Juta) (RM Million)	(RM Juta) (RM Million)		(RM Juta) (RM Million)	(RM Juta) (RM Million)
2015	305	54,389	27,679	26,710	47,972	3,622	132,082
2014 ⁽ⁿ⁾	155	53,104	27,506	25,598	42,913	2,789	111,708
2012	142	38,944	17,812	21,132	42,014	2,450	90,882
2010	145	34,616	24,625	9,991	41,101	3,018	77,980

Nota/Note:

⁽ⁿ⁾ **Semakan data**
Data revision

Jadual 2 - Perangkaan utama sektor bekalan elektrik, gas, wap dan pendinginan udara mengikut industri, 2015

Table 2 - Principal statistics of electricity, gas, steam and air conditioning supply sector by industry, 2015

Keterangan kumpulan dan industri	Kod kumpulan dan industri	Bilangan pertubuhan	Nilai output kasar	Nilai input perantara	Nilai ditambah	Bilangan pekerja pada bulan Disember atau pada tempoh gaji akhir	Gaji & upah yang dibayar	Nilai harta tetap yang dimiliki pada akhir tahun
<i>Group and industry description</i>	<i>Group and industry code</i>	<i>Number of establishment</i>	<i>Value of gross output</i>	<i>Value of intermediate input</i>	<i>Value added</i>	<i>Number of persons engaged during December or the last pay period</i>	<i>Salaries & wages paid</i>	<i>Value of fixed assets owned as at the end of the year</i>
			(RM '000)	(RM '000)	(RM '000)		(RM '000)	(RM '000)
Jumlah <i>Total</i>		305	54,389,333	27,678,997	26,710,336	47,972	3,622,177	132,081,932
Penjanaan, penghantaran dan pengagihan tenaga elektrik <i>Electric power generation, transmission and distribution</i>	351	122	50,460,184	25,823,495	24,636,689	39,880	3,380,102	126,258,820
Operasi kemudahan penjanaan yang menghasilkan tenaga elektrik <i>Operation of generation facilities that produce electric energy</i>	35101	102	50,069,121	25,601,909	24,467,212	39,141	3,356,553	126,115,586
Operasi penghantaran, pengagihan dan penjualan elektrik <i>Operation of transmission, distribution and sales of electricity</i>	35102	20	391,062	221,585	169,477	739	23,548	143,234

Jadual 2 - Perangkaan utama sektor bekalan elektrik, gas, wap dan pendinginan udara mengikut industri, 2015 (samb.)

Table 2 - Principal statistics of electricity, gas, steam and air conditioning supply sector by industry, 2015 (cont'd)

Keterangan kumpulan dan industri	Kod kumpulan dan industri	Bilangan pertubuhan	Nilai output kasar	Nilai input perantara	Nilai ditambah	Bilangan pekerja pada bulan Disember atau pada tempoh gaji akhir	Gaji & upah yang dibayar	Nilai harta tetap yang dimiliki pada akhir tahun	
<i>Group and industry description</i>	<i>Group and industry code</i>	<i>Number of establishment</i>	<i>Value of gross output</i>	<i>Value of intermediate input</i>	<i>Value added</i>	<i>Number of persons engaged during December or the last pay period</i>	<i>Salaries & wages paid</i>	<i>Value of fixed assets owned as at the end of the year</i>	
			(RM '000)	(RM '000)	(RM '000)		(RM '000)	(RM '000)	
Pembuatan gas; pengagihan bahan api berunsur gas melalui saluran utama <i>Manufacture of gas; distribution of gaseous fuels through mains</i>	352	17	2,837,582	1,256,828	1,580,754	1,164	77,274	4,149,914	
Pembuatan bahan api berunsur gas yang mempunyai spesifikasi nilai calorific, mengikut penulenan, pencampuran dan proses lain dari jenis gas yang lain termasuk gas asli	35201	}	9	2,818,622	1,247,863	1,570,759	1,073	75,408	4,133,175
Pengangkutan, pengagihan dan bekalan semua jenis bahan api berunsur gas melalui sistem saluran utama <i>Manufacture of gaseous fuels with a specified calorific value, by purification, blending and other processes from gases of various types including natural gas</i>	35202								
Penjualan gas kepada pengguna melalui saluran utama <i>Sale of gas to the user through mains</i>	35203	8	18,960	8,965	9,994	91	1,866	16,738	

Jadual 2 - Perangkaan utama sektor bekalan elektrik, gas, wap dan pendinginan udara mengikut industri, 2015 (samb.)

Table 2 - Principal statistics of electricity, gas, steam and air conditioning supply sector by industry, 2015 (cont'd)

Keterangan kumpulan dan industri	Kod kumpulan dan industri	Bilangan pertubuhan	Nilai output kasar	Nilai input perantaraan	Nilai ditambah	Bilangan pekerja pada bulan Disember atau pada tempoh gaji akhir	Gaji & upah yang dibayar	Nilai harta tetap yang dimiliki pada akhir tahun
<i>Group and industry description</i>	<i>Group and industry code</i>	<i>Number of establishment</i>	<i>Value of gross output</i>	<i>Value of intermediate input</i>	<i>Value added</i>	<i>Number of persons engaged during December or the last pay period</i>	<i>Salaries & wages paid</i>	<i>Value of fixed assets owned as at the end of the year</i>
			(RM '000)	(RM '000)	(RM '000)		(RM '000)	(RM '000)
Bekalan wap dan pendinginan udara <i>Steam and air conditioning supply</i>	353	166	1,091,567	598,674	492,893	6,928	164,801	1,673,198
Pengeluaran, pengumpulan dan pengagihan wap dan air panas untuk pemanasan, tenaga dan tujuan lain <i>Production, collection and distribution of steam and hot water for heating, power and other purposes</i>	35301	6	64,218	35,227	28,992	328	8,397	52,377
Pengeluaran dan pengagihan udara dingin, air yang disejukkan bagi tujuan pendinginan <i>Production and distribution of cooled air, chilled water for cooling purposes</i>	35302	12	500,912	300,189	200,723	557	23,653	1,304,931
Pengeluaran ais, termasuk ais untuk tujuan makanan dan bukan makanan <i>Production of ice, including ice for food and non-food purposes</i>	35303	148	526,436	263,258	263,178	6,043	132,752	315,890

Jadual 3 - Perangkaan utama sektor bekalan elektrik, gas, wap dan pendinginan udara mengikut negeri, 2015

Table 3 - Principal statistics of electricity, gas, steam and air conditioning supply sector by state, 2015

Negeri	Bilangan pertubuhan	Nilai output kasar	Nilai input perantaraan	Nilai ditambah	Bilangan pekerja pada bulan Disember atau pada tempoh gaji akhir	Gaji & upah yang dibayar	Nilai harta tetap yang dimiliki pada akhir tahun
State	Number of establishment	Value of gross output	Value of intermediate input	Value added	Number of persons engaged during December or the last pay period	Salaries & wages paid	Value of fixed assets owned as at the end of the year
		(RM '000)	(RM '000)	(RM '000)		(RM '000)	(RM '000)
Jumlah Total	305	54,389,333	27,678,997	26,710,336	47,972	3,622,177	132,081,932
Johor	21	3,383,716	1,878,564	1,505,152	1,137	51,903	6,091,832
Kedah	17	397,273	246,398	150,874	337	9,350	707,079
Kelantan	19	39,711	21,121	18,590	357	6,366	84,893
Melaka	6	1,681,802	746,930	934,872	461	35,193	4,023,726
Negeri Sembilan	7	2,481,906	2,067,544	414,362	600	24,632	3,963,543
Pahang	15	114,461	35,005	79,456	470	12,295	135,332
Perak	20	3,493,729	2,304,083	1,189,646	1,172	76,913	5,441,416
Perlis	8	517,643	267,920	249,722	185	15,260	1,187,940
Pulau Pinang	10	412,273	274,856	137,417	612	18,787	628,917
Sabah	54	2,760,118	1,529,681	1,230,437	4,641	234,869	7,171,522
Sarawak	23	3,592,431	1,796,005	1,796,426	4,531	221,943	16,278,217
Selangor	67	6,030,548	3,080,778	2,949,771	3,283	172,671	4,598,748
Terengganu	11	45,267	20,481	24,787	536	11,488	21,467
W. P. Kuala Lumpur *	27	29,438,454	13,409,631	16,028,824	29,650	2,730,506	81,747,298

Nota/Note:

* Termasuk W.P. Putrajaya W.P. Labuan
Included W.P. Putrajaya & W.P. Labuan

Jadual 4 - Perangkaan utama sektor bekalan elektrik, gas, wap dan pendinginan udara mengikut taraf sah, 2015

Table 4 - Principal statistics of electricity, gas, steam and air conditioning supply sector by legal status, 2015

Taraf sah	Bilangan pertubuhan	Nilai output kasar	Nilai input perantaraan	Nilai ditambah	Bilangan pekerja pada bulan Disember atau pada tempoh gaji akhir	Gaji & upah yang dibayar	Nilai harta tetap yang dimiliki pada akhir tahun
<i>Legal organisation</i>	<i>Number of establishment</i>	<i>Value of gross output</i>	<i>Value of intermediate input</i>	<i>Value added</i>	<i>Number of persons engaged during December or the last pay period</i>	<i>Salaries & wages paid</i>	<i>Value of fixed assets owned as at the end of the year</i>
		(RM '000)	(RM '000)	(RM '000)		(RM '000)	(RM '000)
Jumlah <i>Total</i>	305	54,389,333	27,678,997	26,710,336	47,972	3,622,177	132,081,932
Hak milik perseorangan <i>Individual proprietorship</i>	29	19,021	11,049	7,972	227	3,364	13,798
Perkongsian <i>Partnership</i>	17	17,333	9,068	8,266	220	3,820	7,561
Perkongsian liabiliti terhadap Syarikat sendirian berhad <i>Limited liabilities partnership Private limited company</i>	249	24,317,324	13,962,858	10,354,467	16,736	798,855	44,703,055
Syarikat awam berhad <i>Public limited company</i>	6	30,026,755	13,691,369	16,335,386	30,715	2,814,444	87,351,011
Syarikat koperasi <i>Co-operative</i>	4	8,899	4,654	4,246	74	1,694	6,506

Jadual 5 - Perangkaan utama sektor bekalan elektrik, gas, wap dan pendinginan udara mengikut hak milik, 2015

Table 5 - Principal statistics of electricity, gas, steam and air conditioning supply sector by ownership, 2015

Hak milik	Bilangan pertubuhan	Nilai output kasar	Nilai input perantaraan	Nilai ditambah	Bilangan pekerja pada bulan Disember atau pada tempoh gaji akhir	Gaji & upah yang dibayar	Nilai harta tetap yang dimiliki pada akhir tahun
<i>Ownership</i>	<i>Number of establishment</i>	<i>Value of gross output</i>	<i>Value of intermediate input</i>	<i>Value added</i>	<i>Number of persons engaged during December or the last pay period</i>	<i>Salaries & wages paid</i>	<i>Value of fixed assets owned as at the end of the year</i>
		(RM '000)	(RM '000)	(RM '000)		(RM '000)	(RM '000)
Jumlah <i>Total</i>	305	54,389,333	27,678,997	26,710,336	47,972	3,622,177	132,081,932
Residen Malaysia <i>Malaysian residents</i>	305	54,389,333	27,678,997	26,710,336	47,972	3,622,177	132,081,932
Bukan residen Malaysia <i>Non-Malaysian residents</i>	-	-	-	-	-	-	-
Hak milik bersama <i>Joint ownership</i>	-	-	-	-	-	-	-

Jadual 6 - Perangkaan utama sektor bekalan elektrik, gas, wap dan pendinginan udara mengikut saiz pekerja, 2015

Table 6 - Principal statistics of electricity, gas, steam and air conditioning supply sector by employment size, 2015

Saiz pekerja	Bilangan pertubuhan	Nilai output kasar	Nilai input perantaraan	Nilai ditambah	Bilangan pekerja pada bulan Disember atau pada tempoh gaji akhir	Gaji & upah yang dibayar	Nilai harta tetap yang dimiliki pada akhir tahun
<i>Employment size</i>	<i>Number of establishment</i>	<i>Value of gross output</i>	<i>Value of intermediate input</i>	<i>Value added</i>	<i>Number of persons engaged during December or the last pay period</i>	<i>Salaries & wages paid</i>	<i>Value of fixed assets owned as at the end of the year</i>
		(RM'000)	(RM'000)	(RM'000)		(RM'000)	(RM'000)
Jumlah <i>Total</i>	305	54,389,333	27,678,997	26,710,336	47,972	3,622,177	132,081,932
Kurang daripada 5 pekerja <i>Less than 5 employees</i>	35	20,206	7,946	12,260	110	2,169	78,592
5 pekerja < 30 pekerja <i>5 employees < 30 employees</i>	161	620,398	335,774	284,624	2,120	51,168	837,110
30 pekerja ≤ 75 pekerja <i>30 employees ≤ 75 employees</i>	62	4,551,857	2,506,843	2,045,015	3,037	136,179	8,586,260
Lebih daripada 75 pekerja <i>More than 75 employees</i>	47	49,196,871	24,828,434	24,368,437	42,705	3,432,661	122,579,969

Jadual 7 - Perangkaan utama sektor bekalan elektrik, gas, wap dan pendinginan udara mengikut kumpulan dan saiz output kasar, 2015

Table 7 - Principal statistics of electricity, gas, steam and air conditioning supply sector by group and gross output size, 2015

Saiz output kasar	Bilangan pertubuhan	Nilai output kasar	Nilai input perantara	Nilai ditambah	Bilangan pekerja pada bulan Disember atau pada tempoh gaji akhir	Gaji & upah yang dibayar	Nilai harta tetap yang dimiliki pada akhir tahun
Gross output size	Number of establishment	Value of gross output	Value of intermediate input	Value added	Number of persons engaged during December or the last pay period	Salaries & wages paid	Value of fixed assets owned as at the end of the year
		(RM '000)	(RM '000)	(RM '000)		(RM '000)	(RM '000)
Jumlah <i>Total</i>	305	54,389,333	27,678,997	26,710,336	47,972	3,622,177	132,081,932
Kurang daripada RM300,000 <i>Less than RM300,000</i>	20	3,343	1,731	1,613	72	891	5,477
RM300,000 < RM3 juta <i>RM300,000 < RM3 million</i>	149	196,167	105,242	90,926	1,774	37,578	216,237
RM3 juta ≤ RM20 juta <i>RM3 million ≤ RM20 million</i>	80	539,970	290,406	249,564	4,236	107,279	760,866
Lebih daripada RM20 juta <i>More than RM20 million</i>	56	53,649,852	27,281,619	26,368,234	41,890	3,476,428	131,099,352

Jadual 8 - Bilangan pekerja dan gaji & upah mengikut kategori pekerja dan jantina, 2015
Table 8 - Number of persons engaged and salaries & wages by category of workers and sex, 2015

Kategori pekerja <i>Category of workers</i>	Bilangan pekerja <i>Number of persons engaged</i>			Gaji & upah yang dibayar <i>Salaries & wages paid</i>
				(RM '000)
	Jumlah <i>Total</i>	Lelaki <i>Male</i>	Perempuan <i>Female</i>	Jumlah <i>Total</i>
Jumlah <i>Total</i>	47,972	39,357	8,615	3,622,177
Pemilik yang bekerja, rakan niaga yang aktif dan pekerja keluarga tidak bergaji <i>Working proprietors, active business partners and unpaid family workers</i>	65	50	15	n.a
Pekerja bergaji (sepenuh masa) <i>Paid employees (full-time)</i>	47,779	39,184	8,595	3,620,259
Pengurus <i>Managers</i>	6,122	4,208	1,914	1,125,362
Profesional <i>Professionals</i>	1,928	1,245	683	197,633
Juruteknik dan Profesional Bersekutu <i>Technicians and Associate Professionals</i>	12,092	11,147	945	1,197,131
Pekerja Sokongan Perkeranian <i>Clerical Support Workers</i>	6,777	2,348	4,429	371,347
Pekerja Perkhidmatan dan Jualan <i>Services and Sales Workers</i>	1,665	1,572	93	81,448
Pekerja Kemahiran dan Pekerja Pertukangan yang berkaitan <i>Craft and Related Trades Workers</i>	3,168	3,140	28	152,564
Operator Mesin dan Loji dan Pemasang <i>Plant and Machine Operators and Assemblers</i>	10,668	10,523	145	380,641
Pekerja Asas <i>Elementary Occupations</i>	5,359	5,001	358	114,133
Pekerja bergaji (sambilan) <i>Paid employees (part-time)</i>	128	123	5	1,917

Jadual 9 - Bilangan pekerja dan gaji & upah mengikut kewarganegaraan dan jantina, 2015

Table 9 - Number of persons engaged and salaries & wages by citizenship and sex, 2015

Keterangan kumpulan <i>Group description</i>	Kod kumpulan <i>Group code</i>	Jumlah <i>Total</i>	Bilangan pekerja <i>Number of persons engaged</i>				Gaji & upah yang dibayar <i>Salaries & wages paid</i>
			Lelaki <i>Male</i>		Perempuan <i>Female</i>		
			Warganegara Malaysia <i>Malaysian Citizens</i>	Bukan Warganegara Malaysia <i>Non-Malaysian Citizens</i>	Warganegara Malaysia <i>Malaysian Citizens</i>	Bukan Warganegara Malaysia <i>Non-Malaysian Citizens</i>	
			(RM '000)				
Jumlah <i>Total</i>		47,972	37,291	2,066	8,581	34	3,622,177
Penjanaan, penghantaran dan pengagihan tenaga elektrik <i>Electric power generation, transmission and distribution</i>	351	39,880	31,626	414	7,827	13	3,380,102
Pembuatan gas; pengagihan bahan api berunsur gas melalui saluran utama <i>Manufacture of gas; distribution of gaseous fuels through mains</i>	352	1,164	860	54	240	10	77,274
Bekalan wap dan pendinginan udara <i>Steam and air conditioning supply</i>	353	6,928	4,805	1,598	514	11	164,801

Jadual 10 : Bilangan pekerja dan gaji & upah mengikut kemahiran dan jantina, 2015

Jadual 10 : Number of persons engaged and salaries & wages by skill and sex, 2015

Kategori kemahiran pekerja <i>Category of workers skilled</i>	Bilangan pekerja <i>Number of persons engaged</i>			Gaji & upah yang dibayar <i>Salaries & wages paid</i>
	Jumlah <i>Total</i>	Lelaki <i>Male</i>	Perempuan <i>Female</i>	Jumlah <i>Total</i>
				(RM '000)
Jumlah * <i>Total</i>	47,779	39,184	8,595	3,620,259
Pekerja Mahir <i>High-Skilled workers</i>	20,142	16,600	3,542	2,520,126
Pekerja Separuh Mahir <i>Semi-Skilled workers</i>	22,278	17,583	4,695	986,000
Pekerja Kurang Mahir <i>Low-Skilled workers</i>	5,359	5,001	358	114,133

Nota/Note:

* Tidak termasuk pemilik yang bekerja dan rakan niaga yang aktif, pekerja keluarga tidak bergaji dan pekerja bergaji (sambilan)

Excludes working proprietors and active business partners, unpaid family workers and paid employees (part-time)

Jadual 11 - Bilangan pekerja mengikut kelulusan akademik dan jantina, 2015

Table 11 - Number of persons engaged by academic qualification and sex, 2015

Kelulusan <i>Qualification</i>	Jumlah <i>Total</i>	Lelaki <i>Male</i>	Perempuan <i>Female</i>
Jumlah <i>Total</i>	47,972	39,357	8,615
Pascasiswazah <i>Postgraduate</i>	901	704	197
Ijazah sarjana muda / Diploma lanjutan atau setaraf <i>Bachelor / Advances diploma or equivalent</i>	7,310	4,850	2,460
Diploma <i>Diploma</i>	6,108	4,912	1,196
STPM atau yang setaraf <i>STPM or equivalent</i>	1,167	724	443
Sijil <i>Certificate</i>	2,385	2,327	58
SPM / SPM(V) atau yang setaraf <i>SPM / SPM(V) or equivalent</i>	25,325	21,147	4,178
Di bawah taraf kelulusan SPM / SPM(V) <i>Below SPM / SPM(V) qualification</i>	4,776	4,693	83

Jadual 12 - Nilai harta tetap mengikut jenis harta, 2015

Table 12 - Value of fixed assets by type of assets, 2015

Jenis harta <i>Type of assets</i>	Nilai buku bersih seperti pada 01.01.2015 <i>Net book value as at 01.01.2015</i>	Perbelanjaan modal dalam tahun 2015 <i>Capital expenditure during 2015</i>	Harta yang dijual dalam tahun 2015 <i>Assets sold during 2015</i>	Susut nilai semasa <i>Current depreciation</i>	Nilai buku bersih seperti pada 31.12.2015 <i>Net book value as at 31.12.2015</i>	Sewa yang dibayar dalam tahun 2015 <i>Rent paid during 2015</i>
	(RM '000)	(RM '000)	(RM '000)	(RM '000)	(RM '000)	(RM '000)
Jumlah <i>Total</i>	122,419,694	18,866,312	1,494,928	8,414,885	132,081,932	189,476
Tanah / Land	2,071,775	424,924	663	23,154	2,473,074	31,004
Bangunan dan binaan lain : <i>Buildings and other construction :</i>						
Tempat kediaman / Residential	4,579,326	127	-	91,870	4,493,653	83,981
Bukan tempat kediaman / Non-residential	9,670,640	349,913	173,527	447,626	9,505,926	40,832
Binaan lain kecuali pembangunan tanah <i>Other construction except land improvement</i>	5,466,929	68,586	23,490	287,450	5,224,575	198
Pembangunan tanah / Land improvement	11,234	4,311	-	1,889	13,655	-
Alat pengangkutan : <i>Transport equipment :</i>						
Kereta penumpang / Passenger cars	11,144	703	35	1,193	10,630	-
Kenderaan perdagangan / Commercial vehicles	284,453	92,294	842	94,686	286,040	1,294
Lain-lain / Others	651,593	114,192	63,633	58,292	642,857	132
Teknologi maklumat dan komunikasi : <i>Information and communications technology :</i>						
Perkakasan komputer / Computer hardware	48,253	2,589	131	7,547	43,187	-
Perisian komputer / Computer software	18,125	1,306	-	1,396	18,035	-
Peralatan telekomunikasi / Telecommunications equipment	1,877	47	-	235	1,689	-
Jentera dan kelengkapan / Machinery and equipment	61,836,813	5,331,244	691,643	5,182,625	61,768,604	27,116
Perabot dan pemasangan / Furniture and fittings	432,597	262,782	1,296	171,484	528,521	4,594
Harta lain / Other assets	37,334,936	12,213,293	539,668	2,045,436	47,071,486	324

Jadual 13 - Nilai input perantaraan mengikut kumpulan, 2015


Table 13 - Value of intermediate input by group, 2015

Keterangan kumpulan <i>Group description</i>	Kod kumpulan <i>Group code</i>	Bilangan pertubuhan <i>Number of establishments</i>	Nilai input perantaraan <i>Value of Intermediate input</i>				
			Jumlah	Kos bahan mentah	Bahan pembungkus	Perkhidmatan bukan perindustrian	Kos input lain
			<i>Total</i>	<i>Cost of raw materials</i>	<i>Packing materials</i>	<i>Non-industrial services</i>	<i>Other input cost</i>
			(RM '000)	(RM '000)	(RM '000)	(RM '000)	(RM '000)
Jumlah <i>Total</i>		305	27,678,997	17,574,998	28,192	1,312,182	8,763,624
Penjanaan, penghantaran dan pengagihan tenaga elektrik <i>Electric power generation, transmission and distribution</i>	351	122	25,823,495	17,191,722	-	1,214,476	7,417,297
Pembuatan gas; pengagihan bahan api berunsur gas melalui saluran utama <i>Manufacture of gas; distribution of gaseous fuels through mains</i>	352	17	1,256,828	169,446	-	66,631	1,020,751
Bekalan wap dan pendinginan udara <i>Steam and air conditioning supply</i>	353	166	598,674	213,831	28,192	31,074	325,577

Jadual 14 : Perangkaan utama pertubuhan milikan wanita sektor bekalan elektrik, gas, wap dan pendinginan udara, 2015

Table 14 : Principal statistics of women-owned establishment of electricity, gas, steam and air conditioning supply sector, 2015

Saiz output kasar	Bilangan pertubuhan	Nilai output kasar	Nilai input perantaraan	Nilai ditambah	Bilangan pekerja pada bulan Disember atau pada tempoh gaji akhir	Gaji & upah yang dibayar	Nilai harta tetap yang dimiliki pada akhir tahun
<i>Gross output size</i>	<i>Number of establishment</i>	<i>Value of gross output</i>	<i>Value of intermediate input</i>	<i>Value added</i>	<i>Number of persons engaged during December or the last pay period</i>	<i>Salaries & wages paid</i>	<i>Value of fixed assets owned as at the end of the year</i>
	(RM '000)	(RM '000)	(RM '000)	(RM '000)	(RM '000)	(RM '000)	(RM '000)
Jumlah	14	22,357	13,007	9,351	154	3,138	26,274
<i>Total</i>							
Bekalan wap dan pendinginan udara	14	22,357	13,007	9,351	154	3,138	26,274
<i>Steam and air conditioning supply</i>							

The background of the page features a complex, abstract geometric pattern in various shades of blue. The pattern consists of overlapping, semi-transparent shapes that resemble stylized diamonds or chevrons, creating a sense of depth and movement. The colors range from light, airy blues to deep, rich blues, with some areas appearing as bright highlights against a darker background.

LAMPIRAN *APPENDIX*

Muka surat ini sengaja dibiarkan kosong
This page is deliberately left blank

Piawaian Klasifikasi Industri Malaysia 2008 Ver. 1.0
 Malaysia Standard Industrial Classification 2008 Ver. 1.0

Seksyen D : Bekalan Elektrik, Gas, Wap dan Pendinginan Udara
 Section D : Electricity, Gas, Steam and Air Conditioning Supply

Kumpulan Group	Perkara Item	Keterangan Description	MSIC 2000
351		Penjanaan, penghantaran dan pengagihan tenaga elektrik <i>Electric power generation, transmission and distribution</i>	
	35101	Operasi kemudahan penjanaan yang menghasilkan tenaga elektrik <i>Operation of generation facilities that produce electric energy</i>	40100p
	35102	Operasi penghantaran, pengagihan dan penjualan elektrik <i>Operation of transmission, distribution and sales of electricity</i>	40100p
352		Pembuatan gas; pengagihan bahan api berunsur gas melalui saluran utama <i>Manufacture of gas; distribution of gaseous fuels through mains</i>	
	35201	Pembuatan bahan api berunsur gas yang mempunyai spesifikasi nilai calorific, mengikut penulenan, pencampuran dan proses lain dari jenis gas yang lain termasuk gas asli <i>Manufacture of gaseous fuels with a specified calorific value, by purification, blending and other processes from gases of various types including natural gas</i>	40200p
	35202	Pengangkutan, pengagihan dan bekalan semua jenis bahan api berunsur gas melalui sistem saluran utama <i>Transportation, distribution and supply of gaseous fuels of all kinds through a system of mains</i>	40200p
	35203	Penjualan gas kepada pengguna melalui saluran utama <i>Sale of gas to the user through mains</i>	40200p
353		Bekalan wap dan pendinginan udara <i>Steam and air conditioning supply</i>	
	35301	Pengeluaran, pengumpulan dan pengagihan wap dan air panas untuk pemanasan, tenaga dan tujuan lain <i>Production, collection and distribution of steam and hot water for heating, power and other purposes</i>	40300p
	35302	Pengeluaran dan pengagih udara dingin, air yang disejukkan bagi tujuan pendinginan <i>Production and distribution of cooled air, chilled water for cooling purposes</i>	40300p
	35303	Pengeluaran ais, termasuk ais untuk tujuan makanan dan bukan makanan (cth. pendinginan) <i>Production of ice, including ice for food and non-food (e.g. cooling) purposes</i>	15491

Muka surat ini sengaja dibiarkan kosong
This page is deliberately left blank

PENERBITAN INI BOLEH JUGA DIPEROLEH DI JABATAN PERANGKAAAN NEGERI SEPERTI BERIKUT:

THIS PUBLICATION IS ALSO AVAILABLE AT THE FOLLOWING STATES DEPARTMENT OF STATISTICS:

Pengarah,
Jabatan Perangkaan Malaysia Negeri Johor,
Tingkat 14, Menara Tabung Haji,
Jalan Air Molek,
80000 Johor Bahru, Johor.
Tel : 07 - 225 3700
Faks : 07 - 224 9972
E-mel : jpjohor@stats.gov.my

Pengarah,
Jabatan Perangkaan Malaysia Negeri Perak,
Tingkat 3, Blok A, Bangunan Persekutuan Ipoh,
Jalan Dato' Seri Ahmad Said (Greentown)
30450 Ipoh, Perak
Tel : 05 - 255 4963
Faks : 05 - 255 1073
E-mel : jpperak@stats.gov.my

Pengarah,
Jabatan Perangkaan Malaysia Negeri Kedah,
Aras 1, Zon C, Wisma Persekutuan,
Pusat Pentadbiran Kerajaan Persekutuan,
Bandar Muadzam Shah,
06550 Anak Bukit, Alor Setar, Kedah
Tel : 04 - 700 1240
Faks : 04 - 733 8412
E-mel : kedah@stats.gov.my

Pengarah,
Jabatan Perangkaan Malaysia Negeri Perlis,
Tingkat 1, Bangunan Perodua Kangar,
No. 2, Persiaran Jubli Perak,
01000 Kangar,
Perlis
Tel : 04 - 976 7381
Faks : 04 - 976 8950
E-mel : jpperlis@stats.gov.my

Pengarah,
Jabatan Perangkaan Malaysia Negeri Kelantan,
Tingkat 8, Bangunan Persekutuan,
Jalan Bayam,
15514 Kota Bharu, Kelantan.
Tel : 09 - 7419449
Faks : 09 - 7482142
E-mel : jpkelantan@stats.gov.my

Pengarah,
Jabatan Perangkaan Malaysia Negeri Selangor,
Tingkat 9, Bangunan Darul Ehsan,
Jalan Indah, Seksyen 14,
40000 Shah Alam, Selangor
Tel : 03 - 5515 0200
Faks : 03 - 5518 0408
E-mel : jpselangor@stats.gov.my

Pengarah,
Jabatan Perangkaan Malaysia Negeri Melaka,
Aras 7 & 8, Wisma Persekutuan,
Jalan MITC, Hang Tuah Jaya,
75450 Ayer Keroh, Melaka.
Tel : 06 - 252 2725
Faks : 06 - 252 2711
E-mel : jpmelaka@stats.gov.my

Pengarah,
Jabatan Perangkaan Malaysia Negeri Terengganu,
Tingkat 9, Wisma Persekutuan,
Jalan Sultan Ismail,
20200 Kuala Terengganu, Terengganu.
Tel : 09 - 622 3062
Faks : 09 - 622 9659
E-mel : jpterengganu@stats.gov.my

Pengarah,
Jabatan Perangkaan Malaysia Negeri Sembilan,
Tingkat 12, Wisma Persekutuan,
Jalan Dato' Abdul Kadir,
70000 Seremban, Negeri Sembilan.
Tel : 06 - 765 5000
Faks : 06 - 765 5002
E-mel : jpnsembilan@stats.gov.my

Pengarah,
Jabatan Perangkaan Malaysia Negeri Sabah,
Tingkat 1-3, Blok C, Kompleks Pentadbiran
Kerajaan Persekutuan Sabah, Jalan UMS,
Beg Berkunci No. 2046, 88999 Kota Kinabalu, Sabah.
Tel : 088 - 484 602
Faks : 088 - 484 659
E-mel : jpsabah@stats.gov.my

Pengarah,
Jabatan Perangkaan Malaysia Negeri Pahang,
Tingkat 7, Bangunan Persekutuan,
Jalan Gambut,
25000 Kuantan, Pahang.
Tel : 09 - 516 3931/7
Faks : 09 - 514 4636
E-mel : jppahang@stats.gov.my

Pengarah,
Jabatan Perangkaan Malaysia Negeri Sarawak,
Tingkat 7 & 8, Bangunan Tun Datuk Patinggi
Tuanku Haji Bujang, Jalan Simpang Tiga,
93514 Kuching, Sarawak.
Tel : 082 - 240 287
Faks : 082 - 242 609
E-mel : jpsarawak@stats.gov.my

Pengarah,
Jabatan Perangkaan Malaysia Negeri Pulau Pinang,
Tingkat 6, Bangunan Persekutuan,
10400, Jalan Anson,
Pulau Pinang.
Tel : 04 - 226 6244
Faks : 04 - 229 9499
E-mel : jppinang@stats.gov.my

Pengarah,
Jabatan Perangkaan Malaysia
Wilayah Persekutuan,
Tingkat 14 & 15, Wisma Sime Darby,
Jalan Raja Laut,
50350 Kuala Lumpur.
Tel : 03 - 2267 2400
Faks : 03 - 2274 5075
E-mel : jpwpl@stats.gov.my



Road to ISI WSC 2019

18th - 23rd August 2019
Kuala Lumpur Convention Centre

Muka surat ini sengaja dibiarkan kosong
This page is deliberately left blank



HARGA: RM26.00

PRICE:

BOLEH DIPEROLEH DARI:

OBTAINABLE FROM:

Jabatan Perangkaan Malaysia
(Department of Statistics, Malaysia)
Unit Khidmat Pengguna
Blok C6, Kompleks C
Pusat Pentadbiran Kerajaan Persekutuan
62514 Putrajaya
MALAYSIA

Telefon/Telephone : 03-8885 7000
Faks/Fax : 03-8888 9248
E-mel/E-mail : jpbkkp@stats.gov.my
Portal : <https://www.dosm.gov.my>

Diterbit dan dicetak oleh Jabatan Perangkaan Malaysia
Published and printed by Department of Statistics, Malaysia