



MALAYSIA

BANCI EKONOMI
ECONOMIC CENSUS

2016

PERKHIDMATAN PERSENDIRIAN DAN LAIN-LAIN AKTIVITI
PERSONAL SERVICES AND OTHER ACTIVITIES

JABATAN PERANGKAAN MALAYSIA
DEPARTMENT OF STATISTICS, MALAYSIA

Diterbitkan oleh:

Jabatan Perangkaan Malaysia

Blok C6, Kompleks C,
Pusat Pentadbiran Kerajaan Persekutuan,
62514 Putrajaya,
MALAYSIA

Tel. : 03-8885 7000
Faks : 03-8888 9248
Portal : <https://www.dosm.gov.my>
Facebook : www.facebook.com/StatsMalaysia
Twitter : <https://twitter.com/StatsMalaysia>

Harga /Price : RM40.00

Diterbitkan pada Julai 2017

Hakcipta terpelihara.

Tiada bahagian daripada terbitan ini boleh diterbitkan semula, disimpan untuk pengeluaran atau ditukar dalam apa-apa bentuk atau alat apa jua pun kecuali setelah mendapat kebenaran daripada Jabatan Perangkaan Malaysia.

Pengguna yang mengeluarkan sebarang maklumat dari terbitan ini sama ada yang asal atau diolah semula hendaklah meletakkan kenyataan berikut:

“Sumber: Jabatan Perangkaan Malaysia”.

Published by:

Department of Statistics, Malaysia

Block C6, Complex C,
Federal Government Administrative Centre,
62514 Putrajaya,
MALAYSIA

Tel. : 03-8885 7000
Fax : 03-8888 9248
Portal : <https://www.dosm.gov.my>
Facebook : www.facebook.com/StatsMalaysia
Twitter : <https://twitter.com/StatsMalaysia>

Published in July 2017

All rights reserved.

No part of this publication may be reproduced or distributed in any form or by any means or stored in data base without the prior written permission from Department of Statistics, Malaysia.

Users reproducing content of this publication with or without adaptation should quote the following.

“Source: Department of Statistics, Malaysia”.

ISBN 978-967-2000-11-2

Penerbitan ini memaparkan perangkaan bagi perkhidmatan persendirian dan lain-lain aktiviti yang diperoleh daripada Banci Ekonomi 2016 bagi tahun rujukan 2015. Perkhidmatan persendirian dan lain-lain aktiviti merangkumi aktiviti keahlian organisasi; pembaikan komputer dan barangan persendirian & isi rumah; dan aktiviti perkhidmatan lain. Perkhidmatan ini meliputi semua industri dalam Seksyen S yang dikelaskan di bawah Piawaian Klasifikasi Industri Malaysia (MSIC) 2008 Ver. 1.0, selaras dengan Piawaian Klasifikasi Industri Antarabangsa bagi Semua Aktiviti Ekonomi (ISIC), Semakan Ke-4, 2008. Kali terakhir banci ini dijalankan adalah pada tahun 2011 bagi tahun rujukan 2010.

Data utama yang berkaitan dengan nilai output kasar, nilai input perantaraan, nilai ditambah, bilangan pekerja, gaji & upah dan nilai harta tetap dilaporkan dalam penerbitan ini. Maklumat pekerja mengikut kelulusan dan pemilikan wanita turut dipaparkan. Data tersebut boleh digunakan oleh agensi kerajaan, ahli ekonomi, ahli akademik, pihak swasta serta individu bagi tujuan membuat perancangan dan penggubalan dasar, analisis ekonomi, unjuran dan dapat membantu merancang pembangunan perniagaan.

Penerbitan ini dibahagikan kepada tiga bahagian. Bahagian pertama memaparkan hasil penemuan bagi keseluruhan perkhidmatan persendirian dan lain-lain aktiviti. Aspek teknikal seperti skop dan liputan, konsep dan definisi serta pembolehubah utama yang digunakan diterangkan di bahagian kedua bagi memudahkan pengguna memahami statistik yang diterbitkan, manakala bahagian ketiga pula memaparkan jadual perangkaan terperinci.

Jabatan merakamkan setinggi-tinggi penghargaan atas kerjasama yang diberikan oleh reponden dan juga semua pihak yang telah menyumbang secara langsung dan tidak langsung dalam menjayakan banci ini. Setiap maklum balas dan cadangan untuk penambahbaikan laporan ini pada masa akan datang amat dihargai.

DR. MOHD UZIR BIN MAHIDIN
Ketua Perangkawan Malaysia

Julai 2017

PREFACE

This publication presents statistics on personal services and others activities obtained from the Economic Census 2016 for reference year 2015. Personal services and others activities which encompass activities of membership organisations; repair of computer and personal & household goods; and others services activities. These services include all industries in Section S classified under the Standard Industrial Classification (MSIC) 2008 Ver. 1.0, in accordance with the International Standard Industrial Classification of All Economic Activities (ISIC), Revision 4, 2008. The last census was conducted in 2011 for reference year 2010.

Key data related to value of gross output, intermediate input, value added, number of persons engaged, salaries & wages and value of fixed assets are reported in this publication. Information on number of persons engaged by qualification and women ownership are also published. These data can be used by government agencies, economists, academicians, private sectors and individuals for planning and formulations policies, economic analysis, projections and to assist in business development planning.

This publication is divided into three parts. The first part displays the findings for the entire personal services and others activities. Technical aspects such as scope and coverage, concepts and definitions as well as the key variables used are describes in the second part to assist users to understand the published statistics. Meanwhile, the third part provides the detailed statistical tables.

The Department gratefully acknowledges the co-operation rendered by the respondents as well as all parties who have contributed directly and indirectly in making this census a success. Every feedback and suggestion towards improving future reports is highly appreciated.

DR. MOHD UZIR BIN MAHIDIN
Chief Statistician Malaysia

July 2017

	Muka surat <i>Page</i>
Kata pengantar <i>Preface</i>	i
Kandungan <i>Contents</i>	iii
BAHAGIAN 1: Penemuan utama dan ringkasan penemuan <i>PART 1: Main findings and summary of findings</i>	3
BAHAGIAN 2: Nota teknikal <i>PART 2: Technical notes</i>	29
BAHAGIAN 3: Jadual <i>PART 3: Tables</i>	
1 Perkhidmatan persendirian dan lain-lain aktiviti <i>Personal services and other activities</i>	
1.1 Perangkaan utama perkhidmatan persendirian dan lain-lain aktiviti, 2010 dan 2015 <i>Principal statistics of personal services and other activities, 2010 and 2015</i>	49
1.2 Perangkaan utama perkhidmatan persendirian dan lain-lain aktiviti mengikut aktiviti, 2015 <i>Principal statistics of personal services and other activities by activities, 2015</i>	50
1.3 Perangkaan utama perkhidmatan persendirian dan lain-lain aktiviti mengikut negeri, 2015 <i>Principal statistics of personal services and other activities by states, 2015</i>	51
1.4 Perangkaan utama perkhidmatan persendirian dan lain-lain aktiviti mengikut taraf sah, 2015 <i>Principal statistics of personal services and other activities by legal status, 2015</i>	52
1.5 Perangkaan utama perkhidmatan persendirian dan lain-lain aktiviti mengikut hak milik, 2015 <i>Principal statistics of personal services and other activities by ownerships, 2015</i>	53

KANDUNGAN / CONTENTS

Jadual <i>Tables</i>		Muka surat <i>Page</i>
1.6	Perangkaan utama perkhidmatan persendirian dan lain-lain aktiviti mengikut saiz output, 2015 <i>Principal statistics of personal services and other activities by size of output, 2015</i>	54
1.7	Perangkaan utama perkhidmatan persendirian dan lain-lain aktiviti mengikut saiz pekerja, 2015 <i>Principal statistics of personal services and other activities by size of employment, 2015</i>	55
1.8	Perangkaan utama perkhidmatan persendirian dan lain-lain aktiviti mengikut saiz harta tetap, 2015 <i>Principal statistics of personal services and other activities by size of fixed assets, 2015</i>	56
1.9	Bilangan pekerja perkhidmatan persendirian dan lain-lain aktiviti mengikut aktiviti, 2015 <i>Number of persons engaged of personal services and other activities by activities, 2015</i>	57
1.10	Bilangan pekerja dan gaji & upah perkhidmatan persendirian dan lain-lain aktiviti mengikut kategori pekerja, 2015 <i>Number of persons engaged and salaries & wages of personal services and other activities by category of workers, 2015</i>	58
1.11	Bilangan pekerja perkhidmatan persendirian dan lain-lain aktiviti mengikut kewarganegaraan dan kategori pekerja, 2015 <i>Number of persons engaged of personal services and other activities by citizenships and category of workers, 2015</i>	59
1.12	Bilangan pekerja bergaji sepenuh masa perkhidmatan persendirian dan lain-lain aktiviti mengikut kategori kemahiran pekerja dan aktiviti, 2015 <i>Number of paid full-time employees of personal services and other activities by category of skilled workers and activities, 2015</i>	60
1.13	Bilangan pekerja perkhidmatan persendirian dan lain-lain aktiviti mengikut jantina dan kelulusan, 2015 <i>Number of persons engaged of personal services and other activities by sex and qualifications, 2015</i>	61
1.14	Bilangan pekerja perkhidmatan persendirian dan lain-lain aktiviti mengikut kelulusan dan aktiviti, 2015 <i>Number of persons engaged of personal services and other activities by qualifications and activities, 2015</i>	62

KANDUNGAN / CONTENTS

Jadual <i>Tables</i>		Muka surat <i>Page</i>
1.15	Nilai harta tetap perkhidmatan persendirian dan lain-lain aktiviti mengikut aktiviti, 2015 <i>Value of fixed assets of personal services and other activities by activities, 2015</i>	63
1.16	Nilai harta tetap perkhidmatan persendirian dan lain-lain aktiviti mengikut jenis harta, 2015 <i>Value of fixed assets of personal services and other activities by type of assets, 2015</i>	64
1.17	Perangkaan utama pertubuhan milikan wanita perkhidmatan persendirian dan lain-lain aktiviti mengikut aktiviti, 2015 <i>Principal statistics of women-owned establishment in personal services and other activities by activities, 2015</i>	65
1.18	Perangkaan utama pertubuhan milikan wanita perkhidmatan persendirian dan lain-lain aktiviti mengikut negeri , 2015 <i>Principal statistics of women-owned establishment in personal services and other activities by states, 2015</i>	66
2	Aktiviti keahlian organisasi <i>Activities of membership organisations</i>	
2.1	Perangkaan utama aktiviti keahlian organisasi, 2010 dan 2015 <i>Principal statistics of activities of membership organisations, 2010 and 2015</i>	67
2.2	Perangkaan utama aktiviti keahlian organisasi mengikut aktiviti, 2015 <i>Principal statistics of activities of membership organisations by activities, 2015</i>	68
2.3	Perangkaan utama aktiviti keahlian organisasi mengikut negeri, 2015 <i>Principal statistics of activities of membership organisations by states, 2015</i>	69
2.4	Perangkaan utama aktiviti keahlian organisasi mengikut taraf sah, 2015 <i>Principal statistics of activities of membership organisations by legal status, 2015</i>	70

KANDUNGAN / CONTENTS

Jadual <i>Tables</i>		Muka surat <i>Page</i>
2.5	Perangkaan utama aktiviti keahlian organisasi mengikut hak milik, 2015 <i>Principal statistics of activities of membership organisations by ownerships, 2015</i>	71
2.6	Bilangan pekerja dan gaji & upah aktiviti keahlian organisasi mengikut kategori pekerja, 2015 <i>Number of persons engaged and salaries & wages of activities of membership organisations by category of workers, 2015</i>	72
2.7	Bilangan pekerja aktiviti keahlian organisasi mengikut aktiviti, 2015 <i>Number of persons engaged of activities of membership organisations by activities, 2015</i>	73
3	Pembaikan komputer dan barangan persendirian & isi rumah <i>Repair of computers and personal & household goods</i>	
3.1	Perangkaan utama pembaikan komputer dan barangan persendirian & isi rumah, 2010 dan 2015 <i>Principal statistics of repair of computers and personal & household goods, 2010 and 2015</i>	74
3.2	Perangkaan utama pembaikan komputer dan barangan persendirian & isi rumah mengikut aktiviti, 2015 <i>Principal statistics of repair of computers and personal & household goods by activities, 2015</i>	75
3.3	Perangkaan utama aktiviti pembaikan komputer dan barangan persendirian & isi rumah mengikut negeri, 2015 <i>Principal statistics of repair of computers and personal & household goods by states, 2015</i>	76
3.4	Perangkaan utama pembaikan komputer dan barangan persendirian & isi rumah mengikut taraf sah, 2015 <i>Principal statistics of repair of computers and personal & household goods by legal status, 2015</i>	77
3.5	Perangkaan utama pembaikan komputer dan barangan persendirian & isi rumah mengikut hak milik, 2015 <i>Principal statistics of repair of computers and personal & household goods by ownerships, 2015</i>	78

KANDUNGAN / CONTENTS

Jadual <i>Tables</i>		Muka surat <i>Page</i>
3.6	Bilangan pekerja dan gaji & upah bagi pembaikan komputer dan barangan persendirian & isi rumah mengikut kategori pekerja, 2015 <i>Number of persons engaged and salaries & wages of repair of computers and personal & household goods by category of workers, 2015</i>	79
3.7	Bilangan pekerja pembaikan komputer dan barangan persendirian & isi rumah mengikut aktiviti, 2015 <i>Number of persons engaged of repair of computers and personal & household goods by activities, 2015</i>	80
4	Aktiviti perkhidmatan persendirian lain <i>Others personal service activities</i>	
4.1	Perangkaan utama aktiviti perkhidmatan persendirian lain, 2010 dan 2015 <i>Principal statistics of others personal service activities, 2010 and 2015</i>	81
4.2	Perangkaan utama aktiviti perkhidmatan persendirian lain mengikut kumpulan, 2015 <i>Principal statistics of others personal service activities by groups, 2015</i>	82
4.3	Perangkaan utama aktiviti perkhidmatan persendirian lain mengikut negeri, 2015 <i>Principal statistics of others personal service activities by states, 2015</i>	83
4.4	Perangkaan utama aktiviti perkhidmatan persendirian lain mengikut taraf sah, 2015 <i>Principal statistics of others personal service activities by legal status, 2015</i>	84
4.5	Perangkaan utama aktiviti perkhidmatan persendirian lain mengikut hak milik, 2015 <i>Principal statistics of others personal service activities by ownerships, 2015</i>	85
4.6	Bilangan pekerja dan gaji & upah bagi perkhidmatan persendirian lain mengikut kategori pekerja, 2015 <i>Number of persons engaged and salaries & wages of others personal service activities by category of workers, 2015</i>	86

KANDUNGAN / CONTENTS

Jadual <i>Tables</i>		Muka surat <i>Page</i>
4.7	Bilangan pekerja aktiviti perkhidmatan persendirian lain mengikut kumpulan, 2015 <i>Number of persons engaged of others personal service activities by groups, 2015</i>	87



BAHAGIAN 1

**PENEMUAN
UTAMA DAN
RINGKASAN
PENEMUAN**

PART 1

*MAIN FINDINGS
AND
SUMMARY OF
FINDINGS*

Muka surat ini sengaja dibiarkan kosong.

This page is deliberately left blank.



PENEMUAN UTAMA PERKHIDMATAN PERSENDIRIAN DAN LAIN-LAIN AKTIVITI

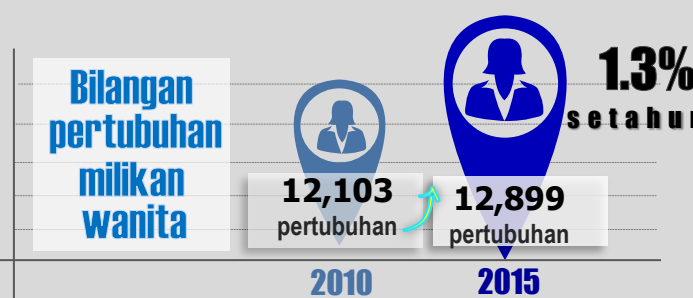
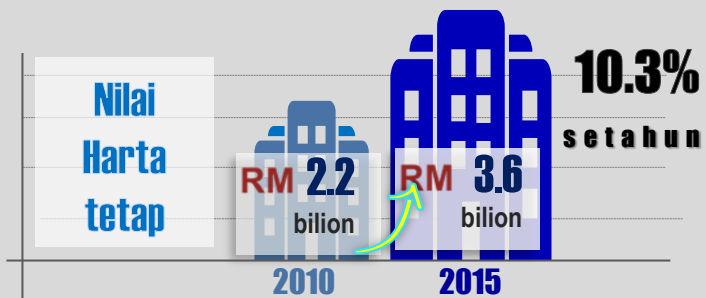
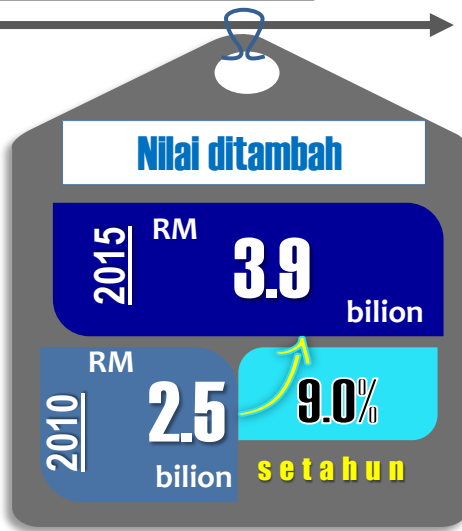
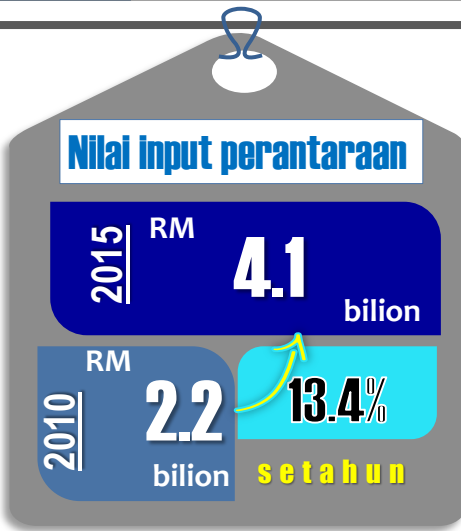
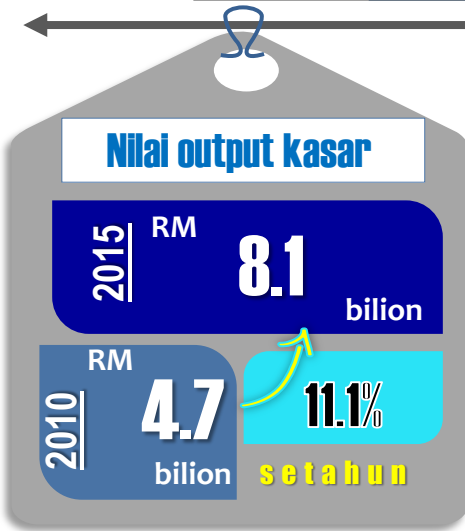


Bilangan pertumbuhan



Kadar pertumbuhan tahunan

4.3%





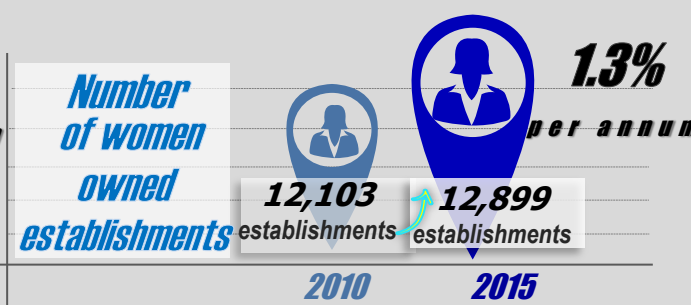
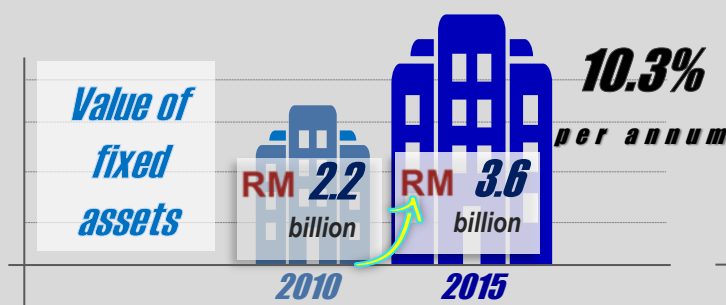
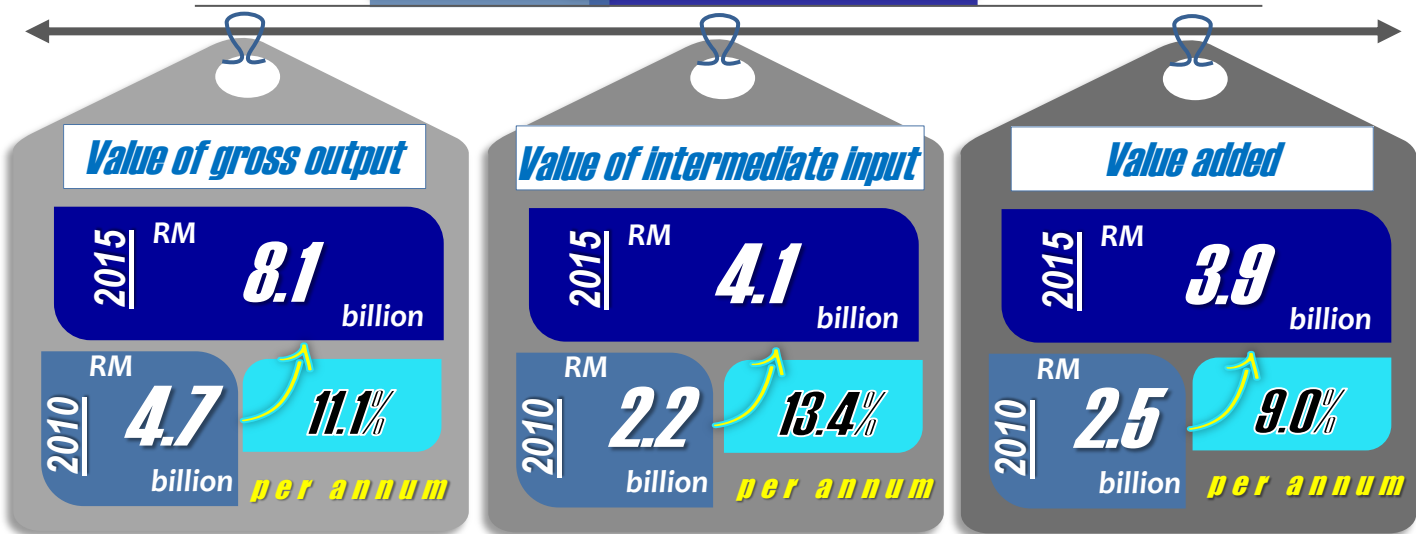
MAIN FINDINGS PERSONAL SERVICES AND OTHER ACTIVITIES



Number of establishments



Annual growth rate
4.3%



1. PENGENALAN

Penerbitan ini membentangkan perangkaan bagi perkhidmatan persendirian dan lain-lain aktiviti berdasarkan Banci Ekonomi yang dijalankan pada tahun 2016 bagi tahun rujukan 2015. Perkhidmatan persendirian dan lain-lain aktiviti merangkumi aktiviti keahlian organisasi; pembaikan komputer dan barangan persendirian & isi rumah; dan aktiviti perkhidmatan persendirian lain.

2. PRESTASI PERKHIDMATAN PERSENDIRIAN DAN LAIN-LAIN AKTIVITI

Banci Ekonomi 2016 merekodkan sejumlah 45,384 pertubuhan yang beroperasi dengan jumlah output kasar yang dihasilkan RM8.1 bilion serta nilai ditambah RM3.9 bilion. Bilangan pekerja yang terlibat dalam perkhidmatan ini adalah seramai 113,624 orang dengan nilai gaji & upah yang dibayar berjumlah RM1.5 bilion. Sementara itu, nilai harta tetap bagi tahun rujukan 2015 adalah RM3.6 bilion. **Paparan 1** menunjukkan perangkaan utama perkhidmatan persendirian dan lain-lain aktiviti bagi tahun 2010 dan 2015.

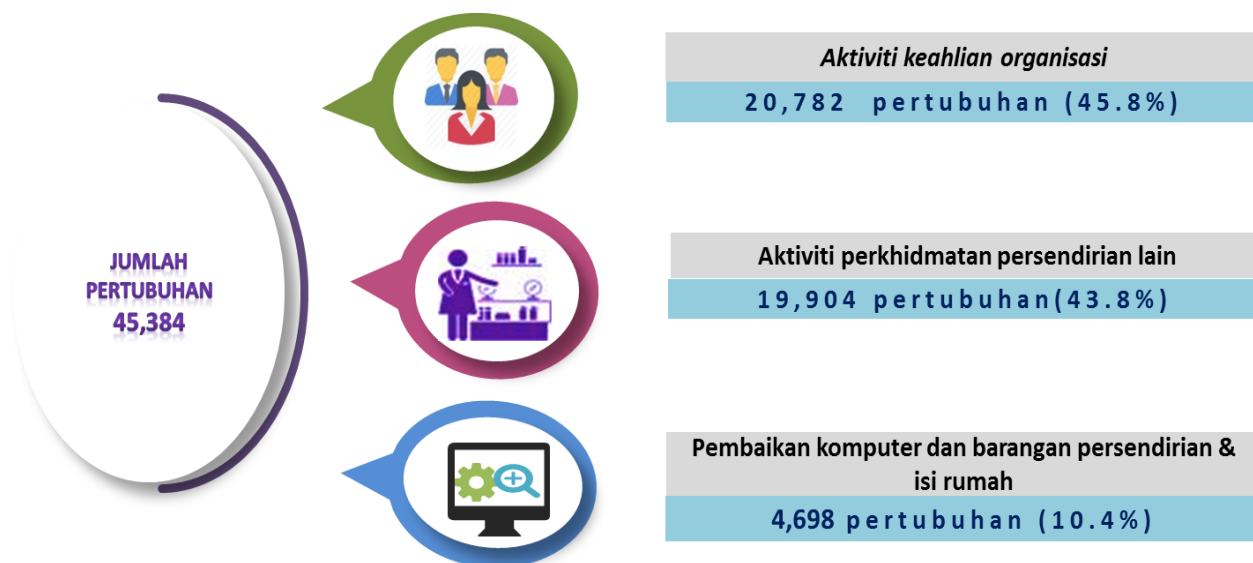
Paparan 1: Perangkaan Utama bagi Perkhidmatan Persendirian dan Lain-Lain Aktiviti, 2010 dan 2015

	Bilangan pertubuhan	Nilai output kasar (RM bilion)	Nilai input perantaraan (RM bilion)	Nilai ditambah (RM bilion)	Bilangan pekerja	Gaji & upah (RM bilion)	Nilai harta tetap (RM bilion)
2015	45,384	8.1	4.1	3.9	113,624	1.5	3.6
2010	36,729	4.7	2.2	2.5	95,490	1.0	2.2
CAGR	4.3%	11.1%	13.4%	9.0%	3.5%	9.8%	10.3%

3. BILANGAN PERTUBUHAN

Pada tahun 2015, sejumlah 45,384 pertubuhan beroperasi dalam perkhidmatan persendirian dan lain-lain aktiviti berbanding 36,729 pertubuhan pada tahun 2010 dengan pertambahan 8,655 pertubuhan. Jumlah ini mencatatkan kadar pertumbuhan tahunan 4.3 peratus. Aktiviti keahlian organisasi mencatatkan bilangan pertubuhan tertinggi sebanyak 20,782 pertubuhan dengan sumbangan 45.8 peratus (**Paparan 2**). Ini diikuti oleh aktiviti perkhidmatan persendirian lain (19,904 pertubuhan; 43.8%) dan pembaikan komputer dan barangan persendirian & isi rumah (4,698 pertubuhan; 10.4%).

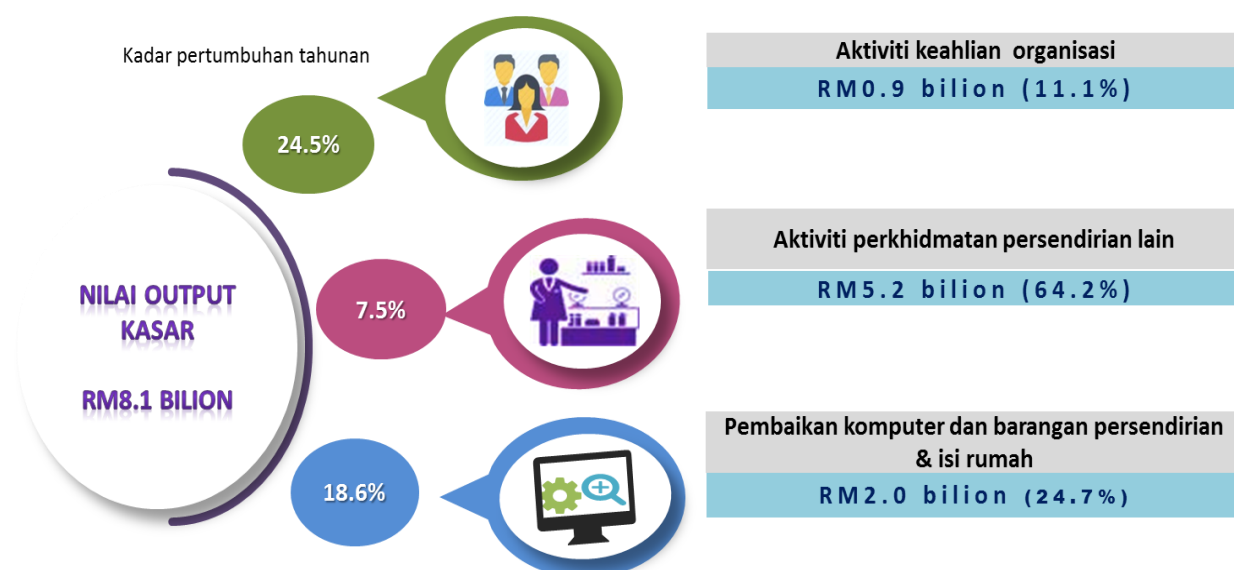
Paparan 2: Bilangan Pertubuhan bagi Perkhidmatan Persendirian dan Lain-Lain Aktiviti mengikut Aktiviti, 2015



4. NILAI OUTPUT KASAR

Sejumlah RM8.1 bilion nilai output kasar telah dihasilkan bagi perkhidmatan ini (2010: RM4.7 bilion), mencatatkan kadar pertumbuhan tahunan 11.1 peratus. **Paparan 3** menunjukkan peratus sumbangan nilai output kasar mengikut aktiviti di mana aktiviti perkhidmatan persendirian lain mencatatkan nilai output kasar tertinggi iaitu RM5.2 bilion dengan sumbangan 64.2 peratus. Ini diikuti oleh pembaikan komputer dan barangan persendirian & isi rumah (RM2.0 bilion; 24.7%) dan aktiviti keahlian organisasi (RM0.9 bilion; 11.1%).

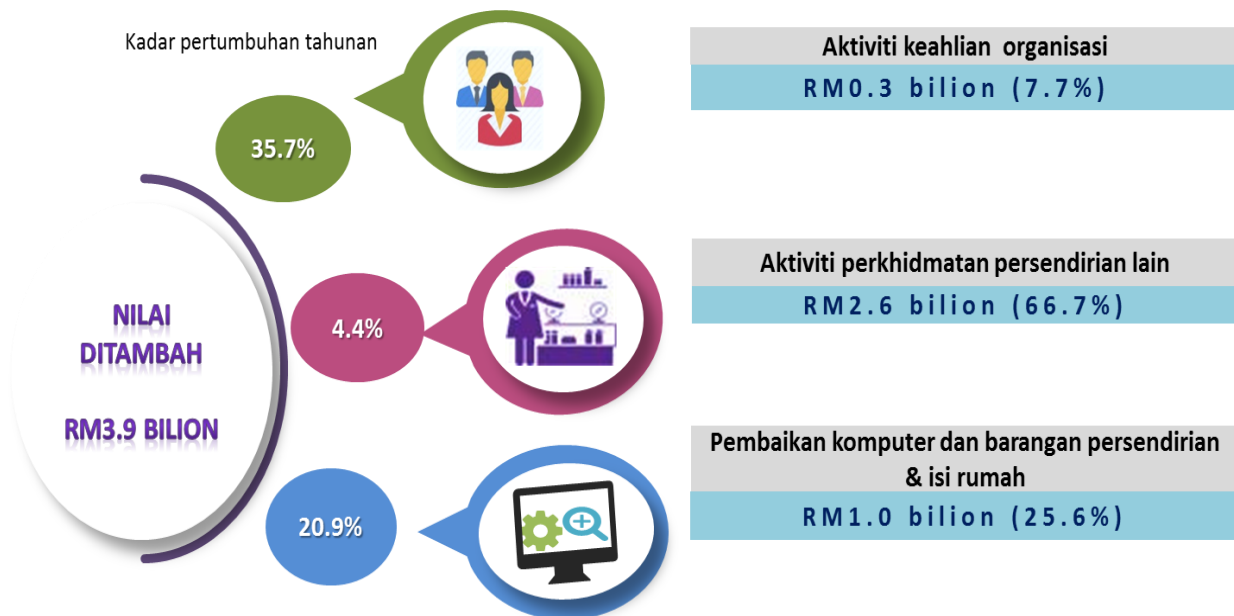
Paparan 3: Nilai Output Kasar bagi Perkhidmatan Persendirian dan Lain-Lain Aktiviti mengikut Aktiviti, 2015



5. NILAI DITAMBAH

Pada tahun 2015, nilai ditambah bagi perkhidmatan persendirian dan lain-lain aktiviti ialah RM3.9 bilion (2010: RM2.5 bilion) dengan kadar pertumbuhan tahunan 9.0 peratus. **Paparan 4** memaparkan peratusan nilai ditambah bagi perkhidmatan ini mengikut aktiviti. Selari dengan nilai output kasar, aktiviti perkhidmatan persendirian lain merekodkan nilai ditambah tertinggi iaitu RM2.6 bilion dengan sumbangan 66.7 peratus. Ini diikuti oleh pembaikan komputer dan barangan persendirian & isi rumah (RM1.0 bilion; 25.6%) dan aktiviti keahlian organisasi (RM0.3 bilion; 7.7%).

Paparan 4 : Nilai Ditambah bagi Perkhidmatan Persendirian dan Lain-Lain Aktiviti mengikut Aktiviti, 2015



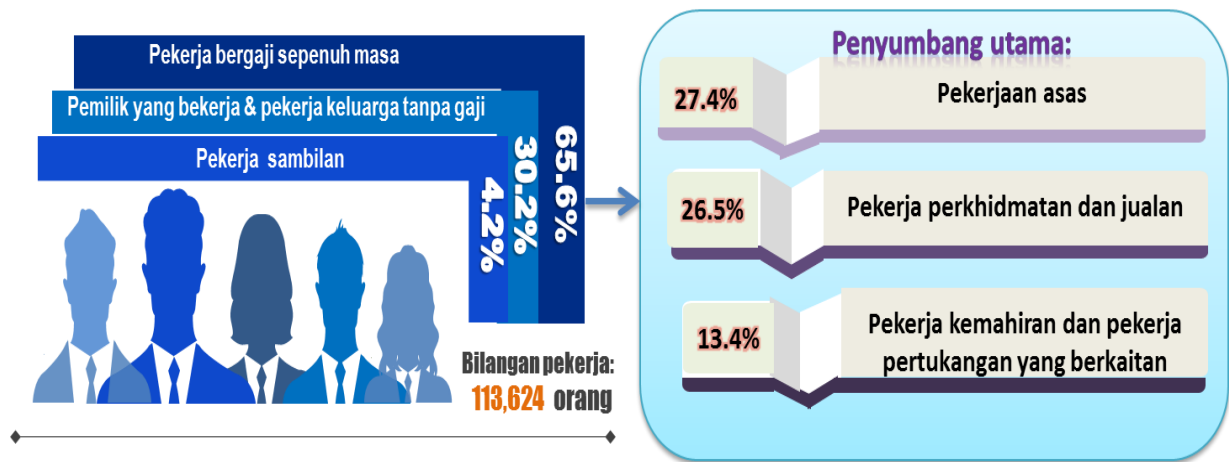
6. BILANGAN PEKERJA

Perkhidmatan persendirian dan lain-lain aktiviti merekodkan bilangan pekerja seramai 113,624 orang bagi tahun 2015 berbanding 95,490 orang pada tahun 2010 dengan kadar pertumbuhan tahunan 3.5 peratus. Aktiviti perkhidmatan persendirian lain mempunyai bilangan pekerja yang tertinggi iaitu 85,215 orang dengan sumbangan 75.0 peratus. Ini diikuti oleh pembaikan komputer dan barangan persendirian & isi rumah (21,292 orang; 18.7%) dan aktiviti keahlian organisasi (7,117 orang; 6.3%).

Pekerja bergaji sepenuh masa merekodkan seramai 74,503 orang dengan sumbangan 65.6 peratus, manakala pemilik yang bekerja dan pekerja keluarga tanpa gaji (34,297 orang; 30.2%) dan pekerja bergaji sambilan (4,824 orang; 4.2%) seperti di **Paparan 5**. Berdasarkan jumlah keseluruhan pekerja bergaji sepenuh masa, kategori pekerjaan asas merekodkan bilangan pekerja yang tertinggi (20,442 orang; 27.4%), diikuti oleh pekerja

perkhidmatan dan jualan (19,710 orang; 26.5%) dan pekerja kemahiran dan pekerja pertukangan yang berkaitan (9,994 orang; 13.4%).

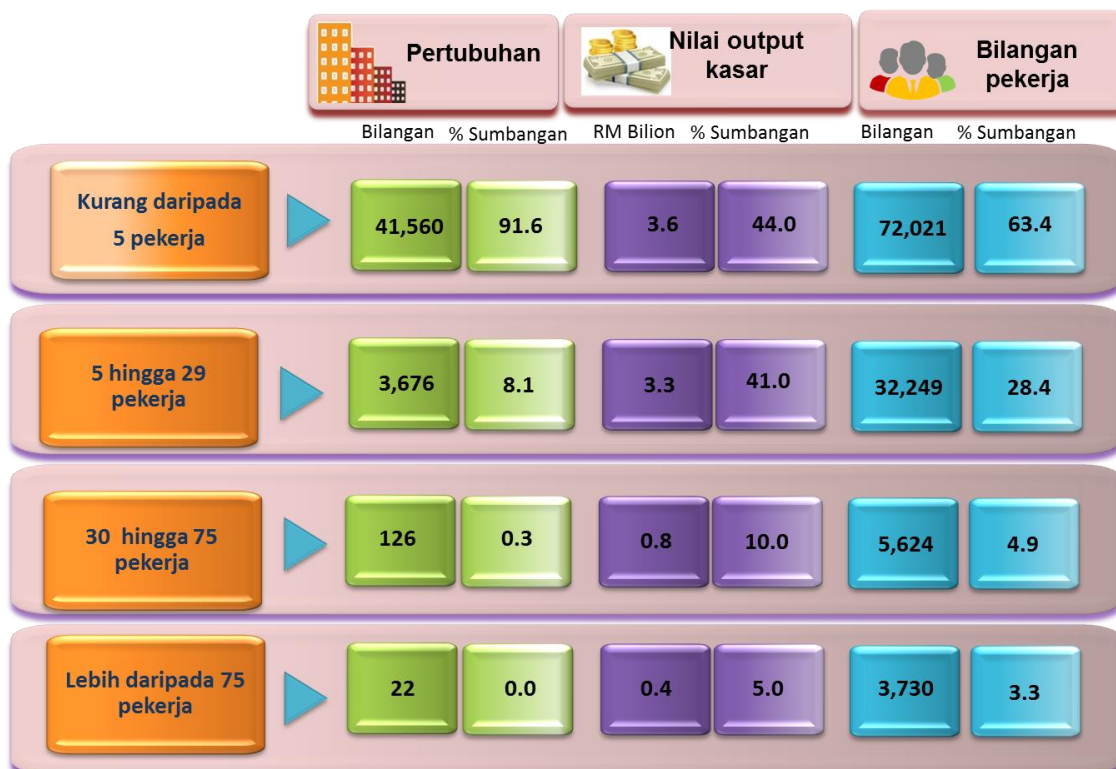
Paparan 5: Bilangan Pekerja bagi Perkhidmatan Persendirian dan Lain-Lain Aktiviti mengikut Kategori Pekerja, 2015



6.1 SAIZ PEKERJA

Pertubuhan dengan saiz pekerja kurang daripada lima orang merupakan penyumbang tertinggi dengan 41,560 pertubuhan atau 91.6 peratus. Pertubuhan dengan saiz pekerja ini telah menyumbangkan nilai output kasar dan bilangan pekerja tertinggi masing-masing 44.0 peratus dan 63.4 peratus seperti yang ditunjukkan dalam **paparan 6**.

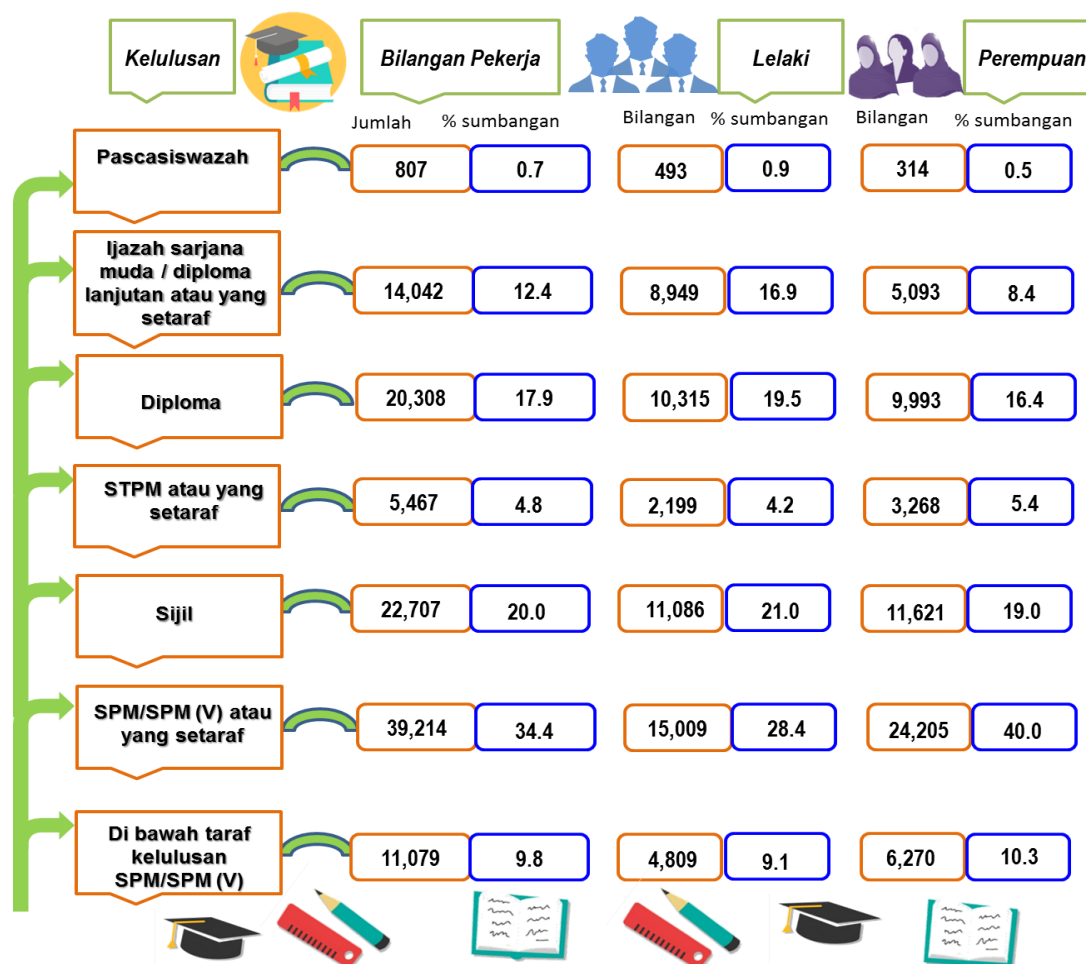
Paparan 6: Perangkaan mengikut Saiz Pekerja bagi Perkhidmatan Persendirian dan Lain-Lain Aktiviti 2015



6.2 KELULUSAN PEKERJA

Pekerja dengan kelulusan SPM/SPM (V) atau yang setaraf mendominasi bagi perkhidmatan persendirian dan lain-lain aktiviti dengan jumlah 39,214 orang atau 34.4 peratus daripada jumlah pekerja pada tahun 2015. Ini diikuti oleh pekerja yang mempunyai kelulusan sijil, 22,707 (20.0% sumbangan) dan seterusnya kelulusan diploma 20,308 orang (17.9% sumbangan) seperti di **Paparan 7**. Analisis mengikut jantina pula menunjukkan pekerja perempuan mewakili 53.5 peratus daripada jumlah keseluruhan bilangan pekerja. Kebanyakan pekerja dalam perkhidmatan persendirian dan lain-lain aktiviti mempunyai kelulusan SPM/SPM (V) iaitu 15,009 orang atau 28.4 peratus bagi pekerja lelaki dan 24,205 orang atau 40.0 peratus bagi pekerja perempuan.

Paparan 7: Kelulusan Pekerja bagi Perkhidmatan Persendirian dan Lain-Lain Aktiviti, 2015



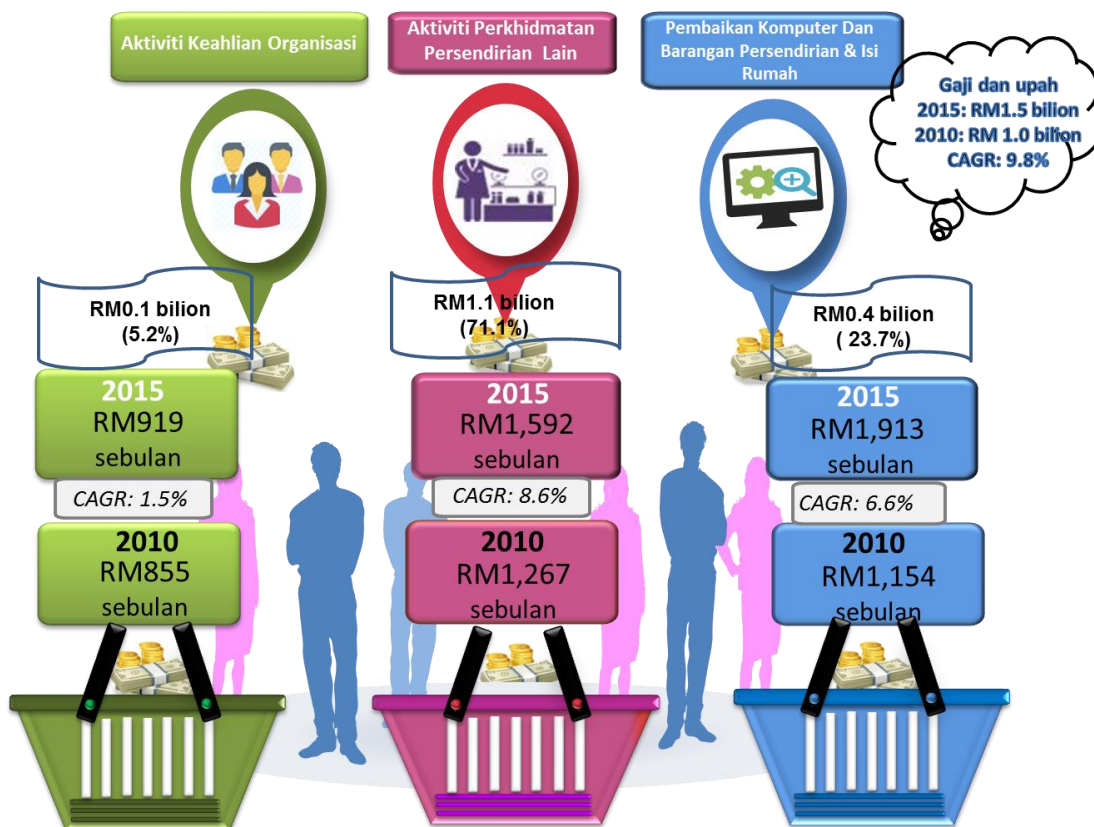
7. GAJI & UPAH

Jumlah gaji & upah yang dibayar pada tahun 2015 adalah sebanyak RM1.5 bilion berbanding hampir RM1.0 bilion pada tahun 2010 mencatatkan kadar pertumbuhan tahunan 9.8 peratus. Aktiviti perkhidmatan persendirian lain mencatatkan jumlah gaji & upah yang

tertinggi dibayar iaitu RM1.1 bilion dengan sumbangan 71.1 peratus, diikuti oleh pembaikan komputer dan barangan persendirian & isi rumah (RM0.4 bilion; 23.7%) dan aktiviti keahlian organisasi (RM78 juta; 5.2%).

Perkhidmatan persendirian dan lain-lain aktiviti mencatatkan purata gaji bulanan sebanyak RM1,595 berbanding RM1,145 pada tahun 2010 dengan kadar pertumbuhan tahunan 8.0 peratus. **Paparan 8** menunjukkan jumlah dan purata gaji sebulan bagi perkhidmatan ini mengikut aktiviti. Purata gaji sebulan yang tertinggi dicatatkan oleh pembaikan komputer dan barangan persendirian & isi rumah sebanyak RM1,913, diikuti oleh aktiviti perkhidmatan persendirian lain (RM1,592) dan aktiviti keahlian organisasi (RM919).

Paparan 8: Gaji & Upah dan Purata Gaji Sebulan bagi Perkhidmatan Persendirian dan Lain-Lain Aktiviti mengikut Aktiviti, 2010 dan 2015



8. PRESTASI MENGIKUT NEGERI

Prestasi mengikut negeri menunjukkan Selangor mencatatkan bilangan pertumbuhan tertinggi sebanyak 8,550 pertumbuhan daripada keseluruhan bilangan pertumbuhan dalam perkhidmatan persendirian dan lain-lain aktiviti dengan kadar pertumbuhan tahunan 0.7 peratus di antara 2010 dan 2015. Ini diikuti oleh Johor (5,458 pertumbuhan; 6.5%) dan Pulau Pinang (5,411 pertumbuhan; 6.7%) seperti **Paparan 9**.

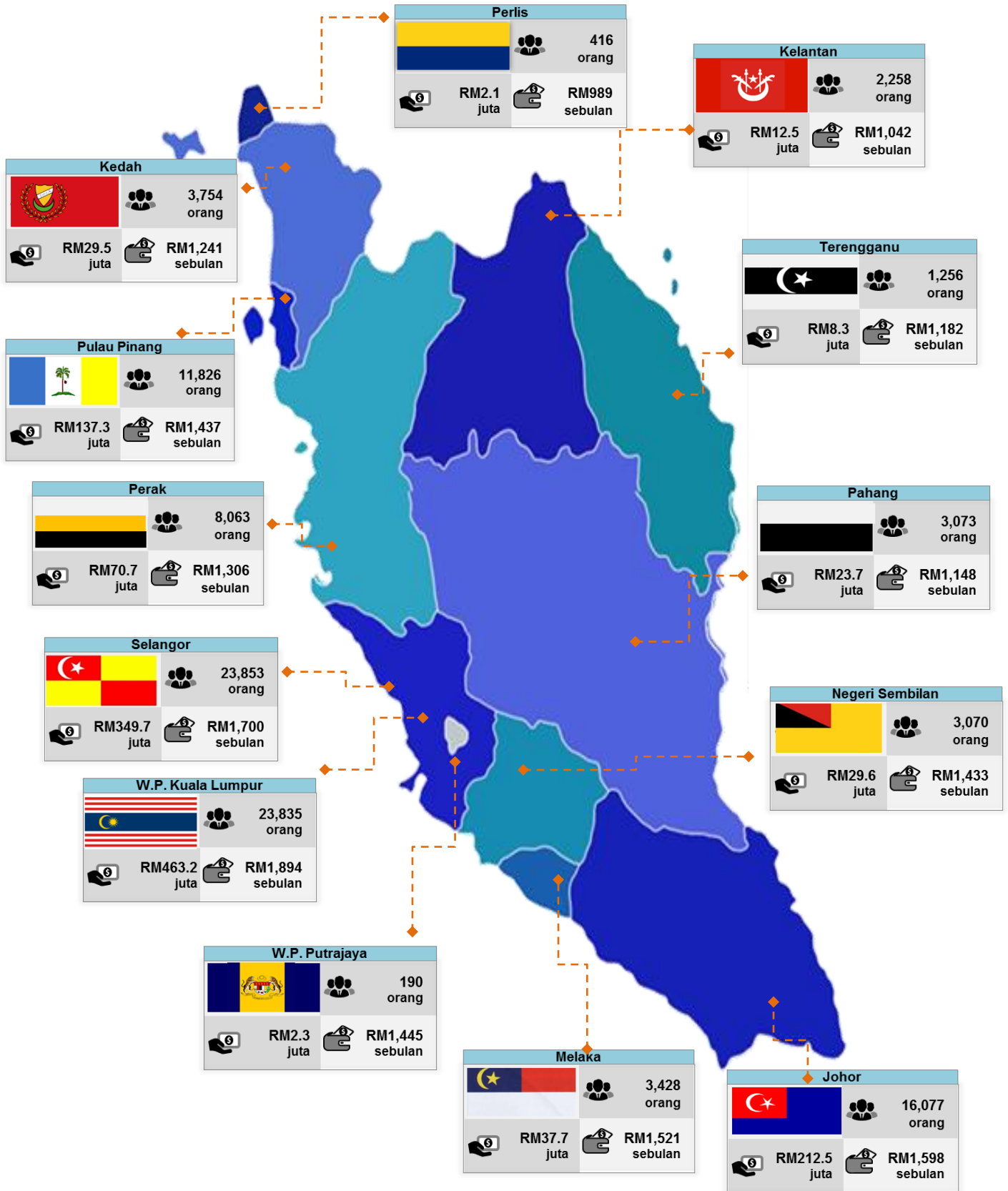
W.P. Kuala Lumpur merekodkan sumbangan tertinggi dari segi nilai output kasar iaitu sebanyak RM2.3 bilion dengan kadar pertumbuhan tahunan 22.8 peratus, diikuti oleh Selangor (RM2.1 bilion; 10.7%) dan Johor (RM0.9 bilion; 15.2%). Selari dengan prestasi nilai output kasar, W.P. Kuala Lumpur mencatatkan nilai ditambah tertinggi RM1.0 bilion dengan kadar pertumbuhan tahunan 17.0 peratus, diikuti oleh Selangor (RM1.0 bilion; 7.3%) dan Johor (RM0.4 bilion; 14.9%). **Paparan 10** menunjukkan perangkaan utama lain mengikut negeri bagi perkhidmatan persendirian dan lain-lain aktiviti.

Paparan 9: Bilangan Pertumbuhan, Nilai Output Kasar dan Nilai Ditambah bagi Perkhidmatan Persendirian dan Lain-lain Aktiviti mengikut Negeri, 2010 dan 2015

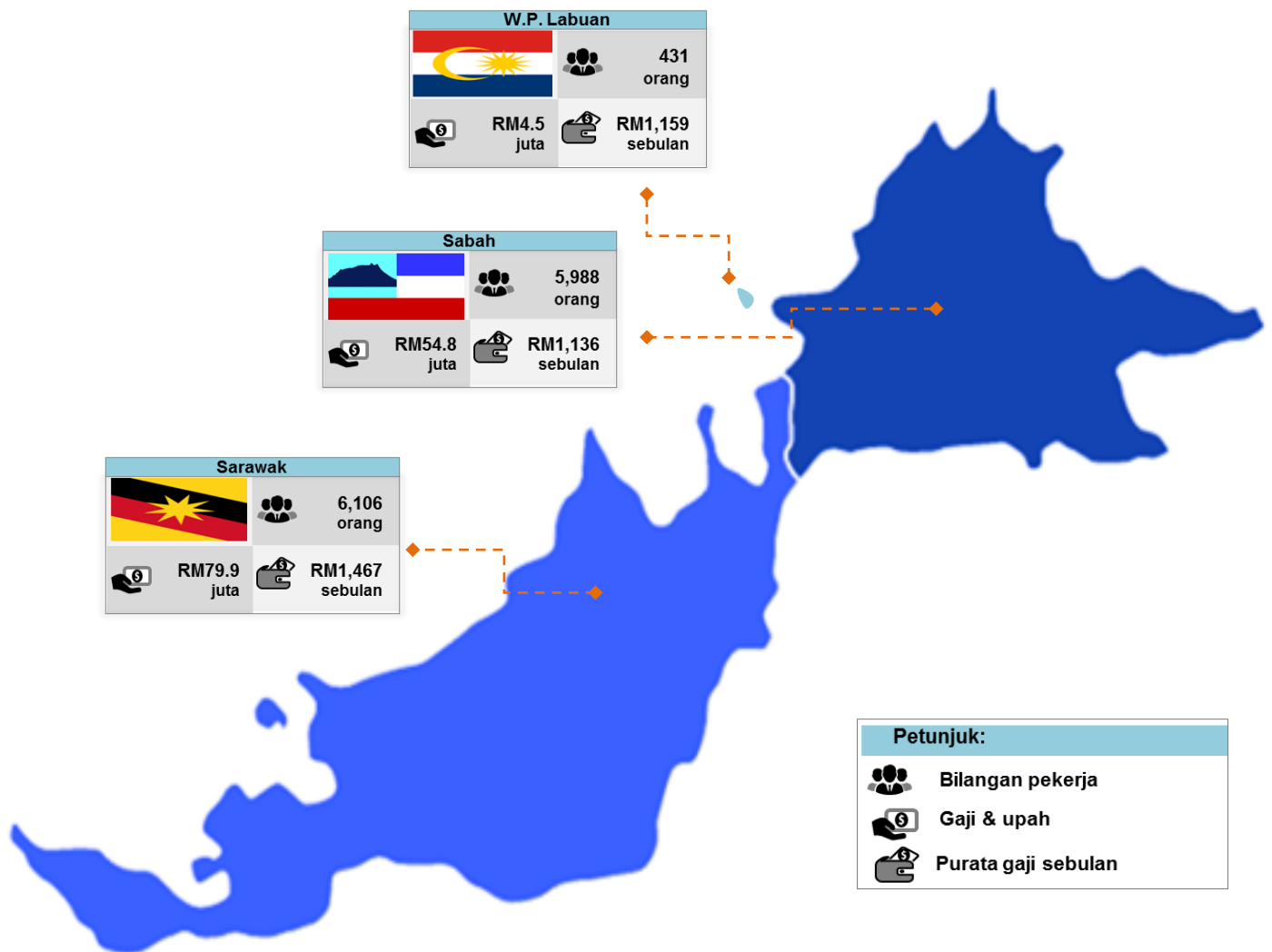
	Tahun	Bilangan pertumbuhan		Nilai output kasar (RM juta)		Nilai ditambah (RM juta)	
			Kadar pertumbuhan tahunan *		Kadar pertumbuhan tahunan		Kadar pertumbuhan tahunan
SELANGOR	2015	8,550	0.7%	2,135.8	10.7%	969.8	7.3%
	2010	8,271		1,285.9		680.8	
JOHOR	2015	5,458	6.5%	897.2	15.2%	443.3	14.9%
	2010	3,984		442.2		221.6	
PULAU PINANG	2015	5,411	6.7%	835.4	1.8%	504.1	2.3%
	2010	3,904		764.1		449.7	
W.P. KUALA LUMPUR	2015	5,102	3.2%	2,263.3	22.8%	1,012.2	17.0%
	2010	4,354		811.7		461.0	
PERAK	2015	3,915	1.2%	342.7	1.3%	171.8	0.6%
	2010	3,696		321.1		166.7	
SARAWAK	2015	3,529	5.7%	370.0	1.2%	179.4	1.4%
	2010	2,672		348.2		167.0	
SABAH	2015	2,982	15.3%	322.8	15.5%	169.2	16.4%
	2010	1,464		157.0		79.1	
KEDAH	2015	2,121	1.3%	182.1	4.9%	84.6	5.1%
	2010	1,990		143.0		65.9	
PAHANG	2015	1,977	2.1%	144.0	7.1%	68.5	4.8%
	2010	1,781		102.3		54.3	
KELANTAN	2015	1,807	14.5%	103.8	18.7%	49.0	20.6%
	2010	917		44.0		19.0	
NEGERI SEMBILAN	2015	1,488	0.2%	147.2	3.0%	72.9	2.4%
	2010	1,475		127.2		64.8	
MELAKA	2015	1,424	3.8%	186.6	7.5%	95.8	9.3%
	2010	1,184		129.9		61.5	
TERENGGANU	2015	1,092	11.6%	61.4	12.1%	29.0	17.1%
	2010	631		34.7		13.2	
PERLIS	2015	314	5.6%	24.2	4.1%	11.1	10.2%
	2010	239		19.7		6.8	
W.P. LABUAN	2015	115	8.6%	24.0	11.5%	11.8	11.3%
	2010	76		14.0		6.9	
W.P. PUTRAJAYA	2015	99	1.7%	12.4	13.1%	5.6	16.2%
	2010	91		6.7		2.6	
MALAYSIA	2015	45,384	4.3%	8,052.9	11.3%	3,878.1	9.4%
	2010	36,729		4,751.6		2,521.1	

Nota: * Terdapat perubahan klasifikasi kod industri pada 2015.

Paparan 10: Perangkaan Utama Lain bagi Perkhidmatan Persendirian dan Lain-Lain Aktiviti mengikut Negeri, 2015



RINGKASAN PENEMUAN

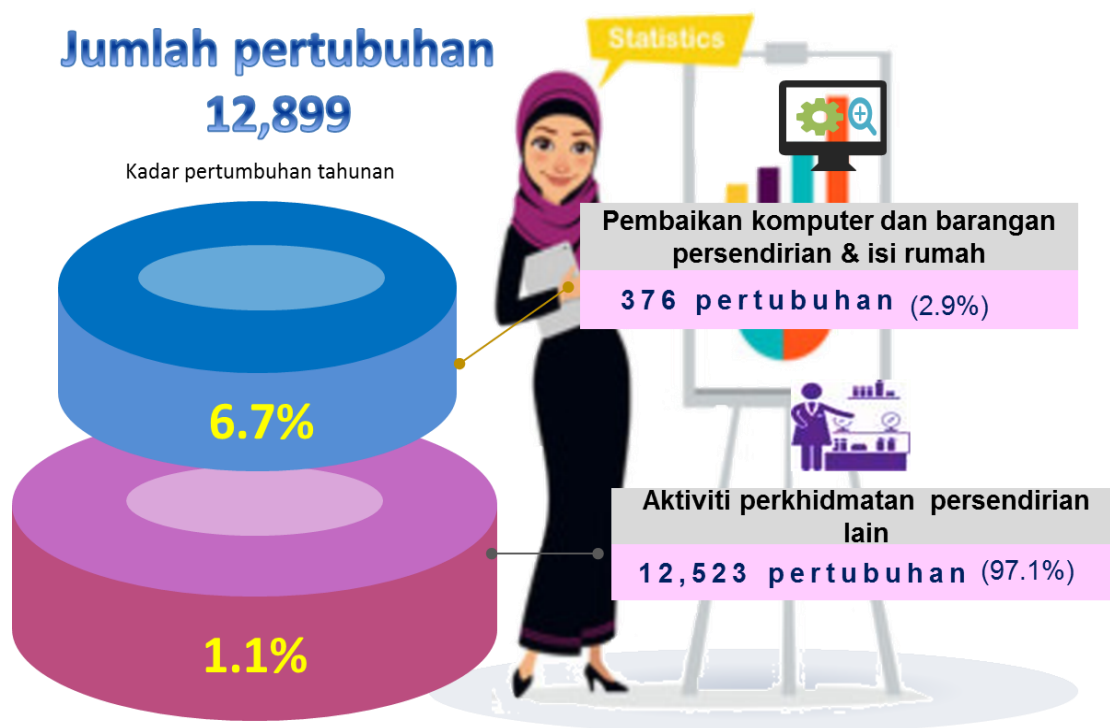


Sementara itu, bagi bilangan pekerja, Selangor turut merekodkan bilangan pekerja yang tertinggi dalam perkhidmatan persendirian dan lain-lain aktiviti iaitu 23,853 orang dengan sumbangan 21.1 peratus. Ini diikuti oleh W.P. Kuala Lumpur 23,835 orang (21.0%) dan Johor 16,077 orang (14.0%). Gaji & upah yang tertinggi dibayar adalah di W.P.Kuala Lumpur iaitu RM463.2 juta dengan purata gaji sebulan RM1,882, diikuti Selangor (RM349.7 juta; RM1,715 sebulan) dan Johor (RM212.5 juta; RM1,598 sebulan).

9. PERTUBUHAN MILIKAN WANITA

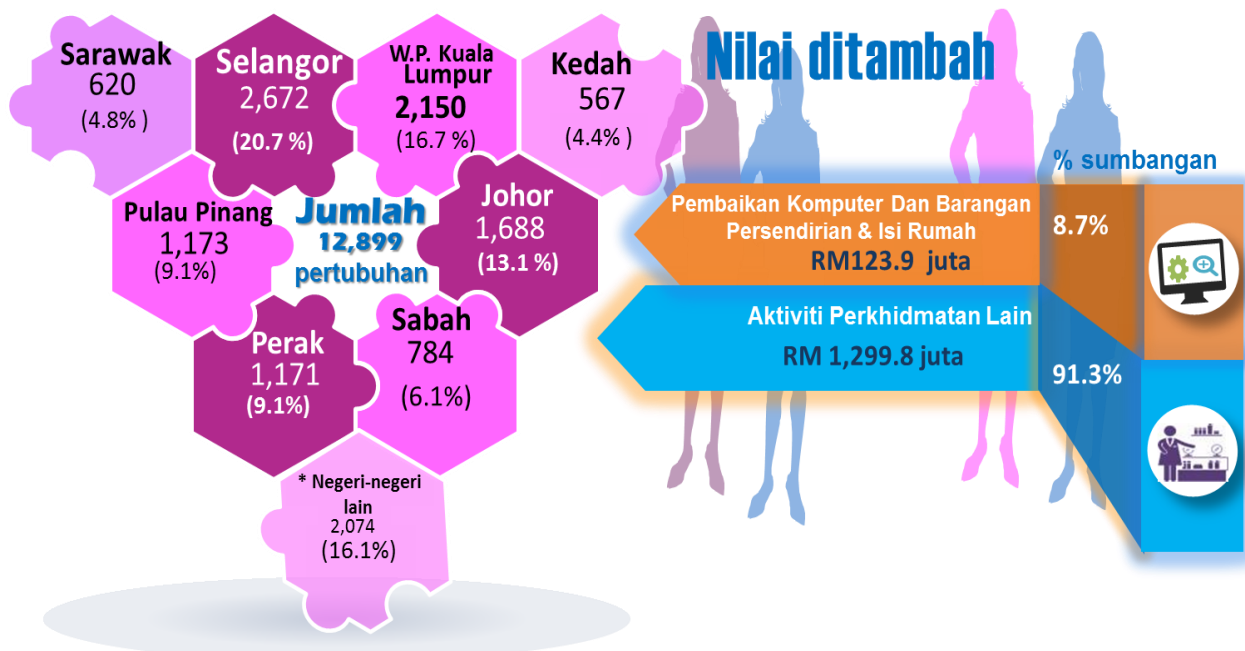
Pada tahun 2015, terdapat 12,899 pertubuhan milikan wanita dalam perkhidmatan persendirian dan lain-lain aktiviti (**paparan 11**) berbanding 12,103 pertubuhan pada tahun 2010 dengan pertumbuhan tahunan 1.3 peratus. Jumlah ini merupakan 28.4 peratus daripada jumlah keseluruhan pertubuhan. Bilangan tertinggi milikan wanita dicatatkan oleh aktiviti perkhidmatan persendirian lain iaitu sebanyak 12,523 pertubuhan dengan sumbangan sebanyak 97.1 peratus, diikuti oleh pembaikan komputer dan barangan persendirian & isi rumah (376 pertubuhan; 2.9 %).

Paparan 11: Pertubuhan Milikan Wanita bagi Perkhidmatan Persendirian dan Lain-Lain Aktiviti mengikut Aktiviti, 2015



Bilangan pertubuhan tertinggi direkodkan di Selangor berjumlah 2,672 pertubuhan dengan sumbangan 20.7 peratus, diikuti oleh W.P. Kuala Lumpur (16.7%) dan Johor (13.1%). Jumlah nilai ditambah yang dihasilkan oleh pertubuhan milikan wanita dalam perkhidmatan persendirian dan lain-lain aktiviti adalah RM1,423.7 juta. Aktiviti perkhidmatan persendirian lain adalah penyumbang tertinggi bagi nilai ditambah iaitu RM1,299.8 juta dengan sumbangan 91.3 peratus. Ini diikuti oleh pembaikan komputer dan barangan persendirian & isi rumah (RM123.9 juta; 8.7%) seperti di **Paparan 12**.

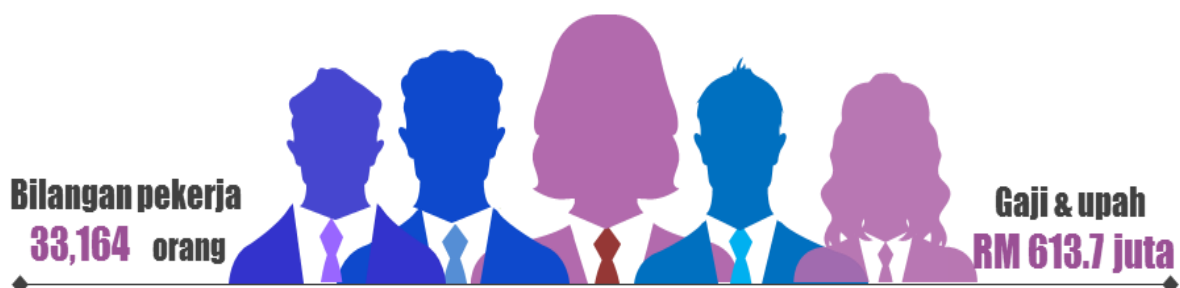
Paparan 12: Pertubuhan Milikan Wanita mengikut Negeri dan Nilai Ditambah mengikut Aktiviti bagi Perkhidmatan Persendirian dan Lain-Lain Aktiviti, 2015



Nota: * Negeri-negeri lain merujuk kepada negeri Kelantan, Melaka, Pahang, Negeri Sembilan, Perlis, Terengganu, W.P.Labuan dan W.P. Putrajaya.

Paparan 13 menunjukkan bilangan pekerja dan gaji & upah bagi pertubuhan milikan wanita 2015. Ianya merekodkan seramai 33,164 orang dan jumlah gaji & upah yang dibayar adalah sebanyak RM613.7 juta.

Paparan 12: Bilangan Pekerja dan Gaji & Upah Pertubuhan Milikan Wanita bagi Perkhidmatan Persendirian dan Lain-Lain Aktiviti, 2015



Muka surat ini sengaja dibiarkan kosong.

This page is deliberately left blank.

1. INTRODUCTION

This report presents statistics on the personal services and other activities that was compiled based on Economic Census undertaken in 2016 for reference year 2015. Personal services and other activities comprise activities of membership organisations; repair of computers and personal & household goods; and other personal service activities.

2. PERFORMANCE OF PERSONAL SERVICES AND OTHER ACTIVITIES

Economic Census 2016 recorded a number of 45,384 establishments with a total value of gross output generated RM8.1 billion and value added of RM3.9 billion. Number of persons engaged in these services were 113,624 persons with salaries & wages paid amounting to RM1.5 billion. Meanwhile, fixed assets value of these services registered RM3.6 billion for the reference year 2015. **Exhibit 1** shows key statistics for personal services and other activities in 2010 and 2015.

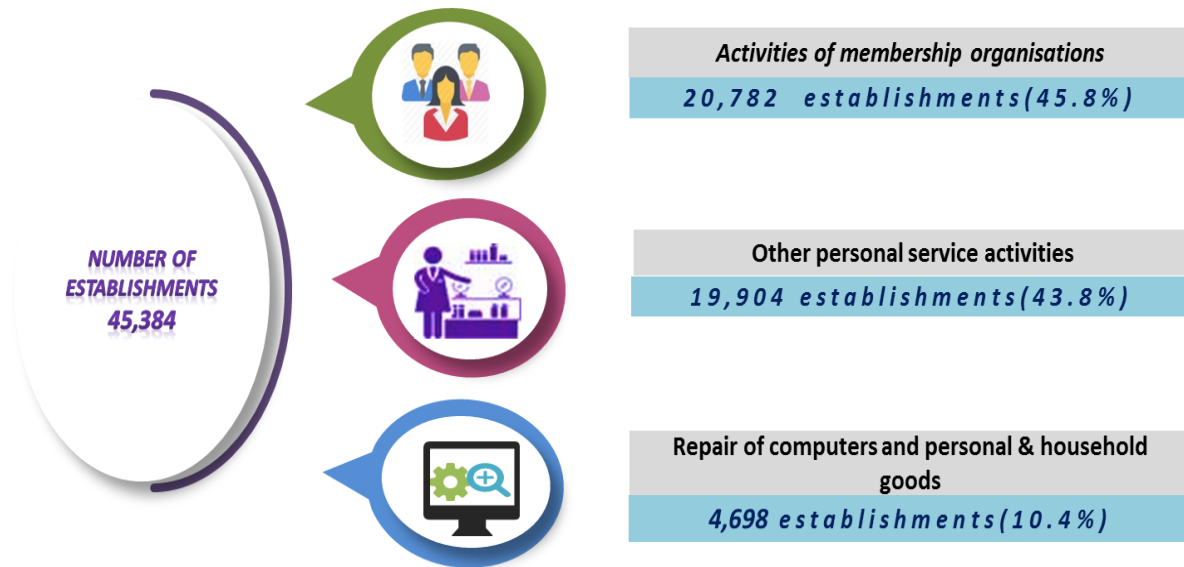
Exhibit 1: Key Statistics for Personal Services and Other Activities, 2010 and 2015

	Number of establishments	Value of gross output (RM billion)	Value of intermediate input (RM billion)	Value added (RM billion)	Number of persons engaged	Salaries & wages (RM billion)	Value of fixed assets (RM billion)
2015	45,384	8.1	4.1	3.9	113,624	1.5	3.6
2010	36,729	4.7	2.2	2.5	95,490	1.0	2.2
CAGR	4.3%	11.1%	13.4%	9.0%	3.5%	9.8%	10.3%

3. NUMBER OF ESTABLISHMENTS

In 2015, a total of 45,384 establishments operated in personal services and other activities compared to 36,729 establishments in 2010, increased by 8,655 establishments. The annual growth rate was 4.3 per cent. Activities of membership organisations recorded the highest number of establishments of 20,782 with a percentage share of 45.8 per cent (**Exhibit 2**). This was followed by other personal service activities (19,904 establishments; 43.8%) and repair of computers and personal & household goods (4,698 establishments; 10.4%).

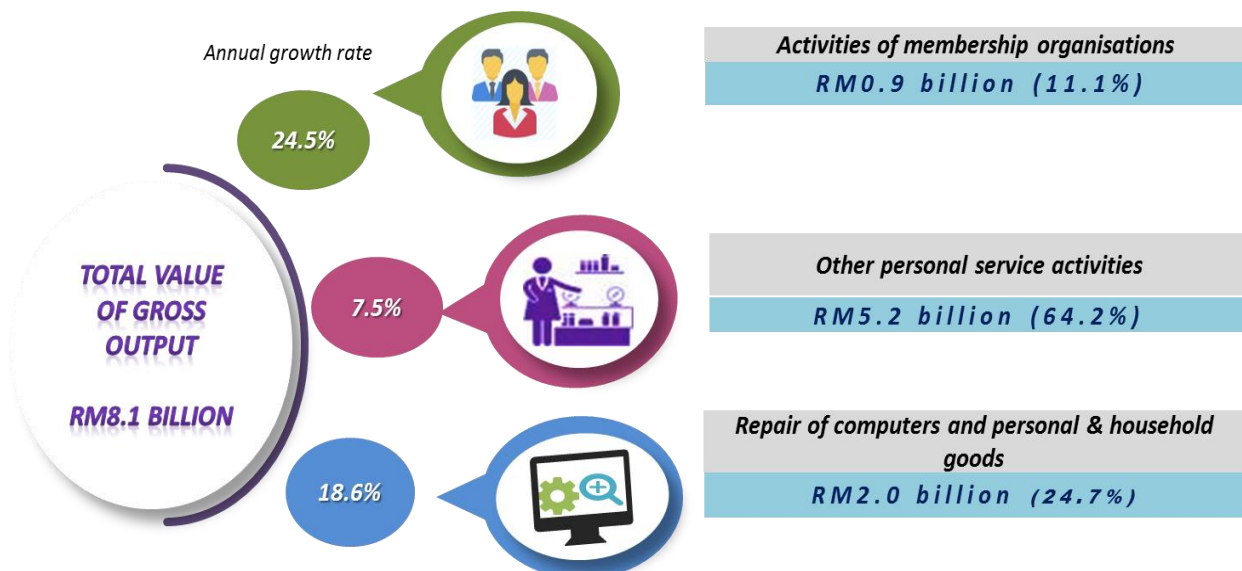
Exhibit 2: Number of Establishments for Personal Services and Other Activities by Activity, 2015



4. VALUE OF GROSS OUTPUT

A total of RM8.1 billion gross output was generated from these services (2010: RM4.7 billion), registered annual growth rate of 11.1 per cent. The percentage share of the value of gross output by activities is presented in **Exhibit 3**, which other personal service activities recorded the highest gross output value of RM5.2 billion with a percentage share of 64.2 per cent. It was followed by repair of computers and personal & household goods (RM2.0 billion; 24.7%) and activities of membership organisations (RM0.9 billion; 11.1%).

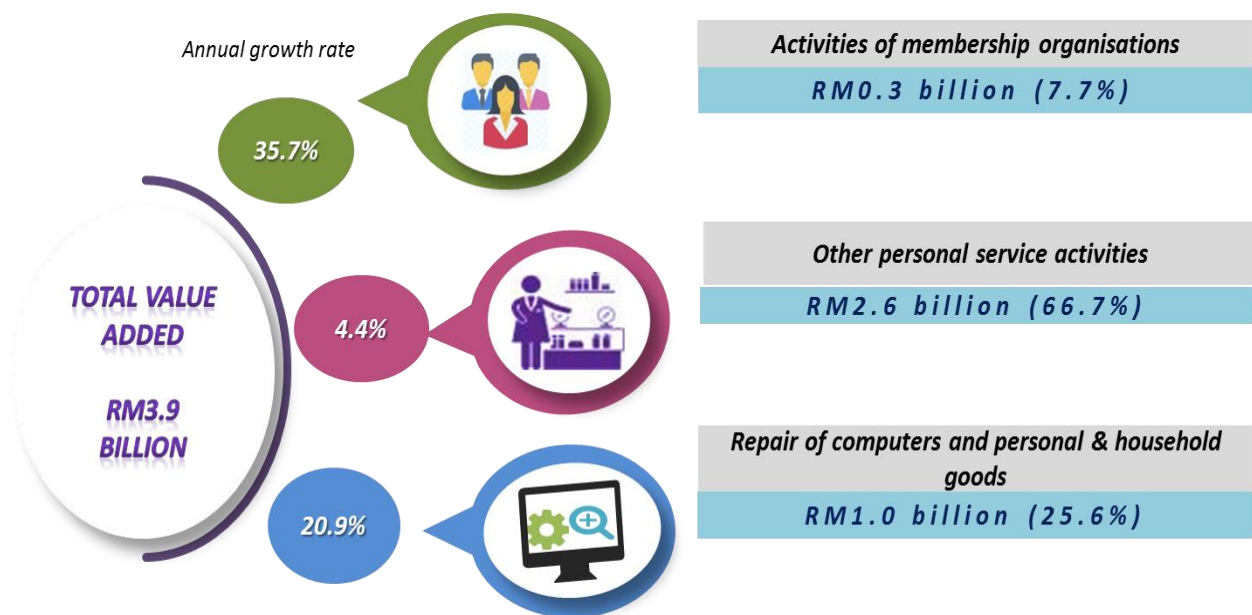
Exhibit 3: Value of Gross Output for Personal Services and Other Activities by Activities, 2015



5. VALUE ADDED

In 2015, the total value added for personal services and other activities was RM3.9 billion (2010: RM2.5 billion) with an annual growth rate of 9.0 per cent. **Exhibit 4** presents the percentage share of value added for these services by activities. In line with the value of gross output, other personal service activities recorded the highest value added amounting RM2.6 billion with a percentage share of 66.7 per cent. This was followed by repair of computers and personal & household goods (RM1.0 billion; 25.6%) and activities of membership organisations (RM0.3 billion; 7.7%).

Exhibit 4: Value Added for Personal Services and Other Activities by Activities, 2015



6. NUMBER OF PERSONS ENGAGED

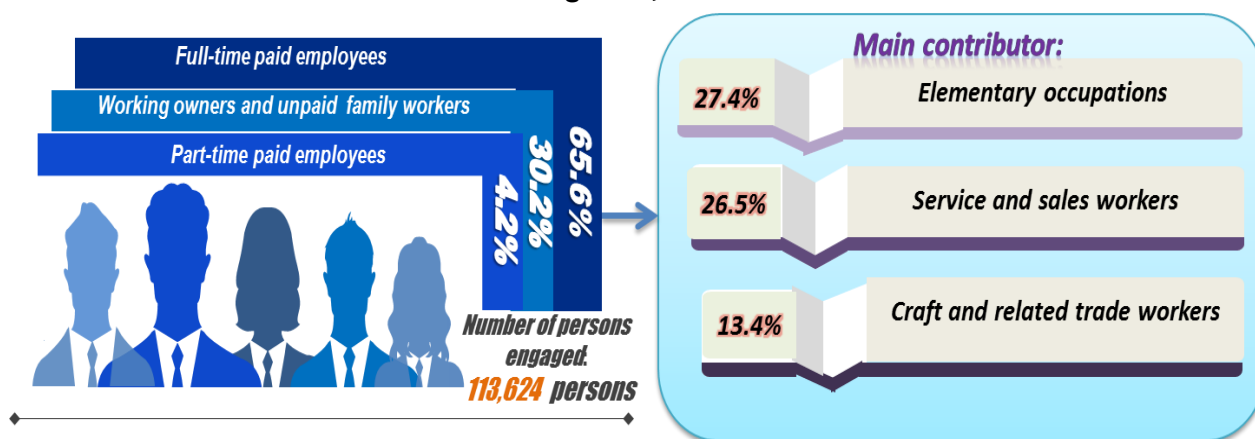
Personal services and other activities posted 113,624 number of persons engaged in 2015 as compared to 95,490 persons in 2010, with annual growth rates of 3.5 per cent. Other personal service activities recorded the highest number of persons engaged with a total employee of 85,215 persons with a percentage share of 75.0 per cent. This was followed by repair of computers and personal & household goods (21,292 persons; 18.7%) and activities of membership organisations (7,117 persons; 6.3%).

A total of 74,503 persons was recorded as paid full-time employees with a percentage share of 65.6 per cent, while working owners & unpaid family workers (34,297 persons; 30.2%) and paid part-time employees (4,824 persons; 4.2%) as shown in **Exhibit 5**. Elementary occupations were the highest number of persons engaged

SUMMARY OF FINDINGS

(20,442 persons; 27.4%) as paid full-time employees, followed by service and sales workers (19,710 persons; 26.5%) and craft and related trade workers (9,994 persons; 13.4%).

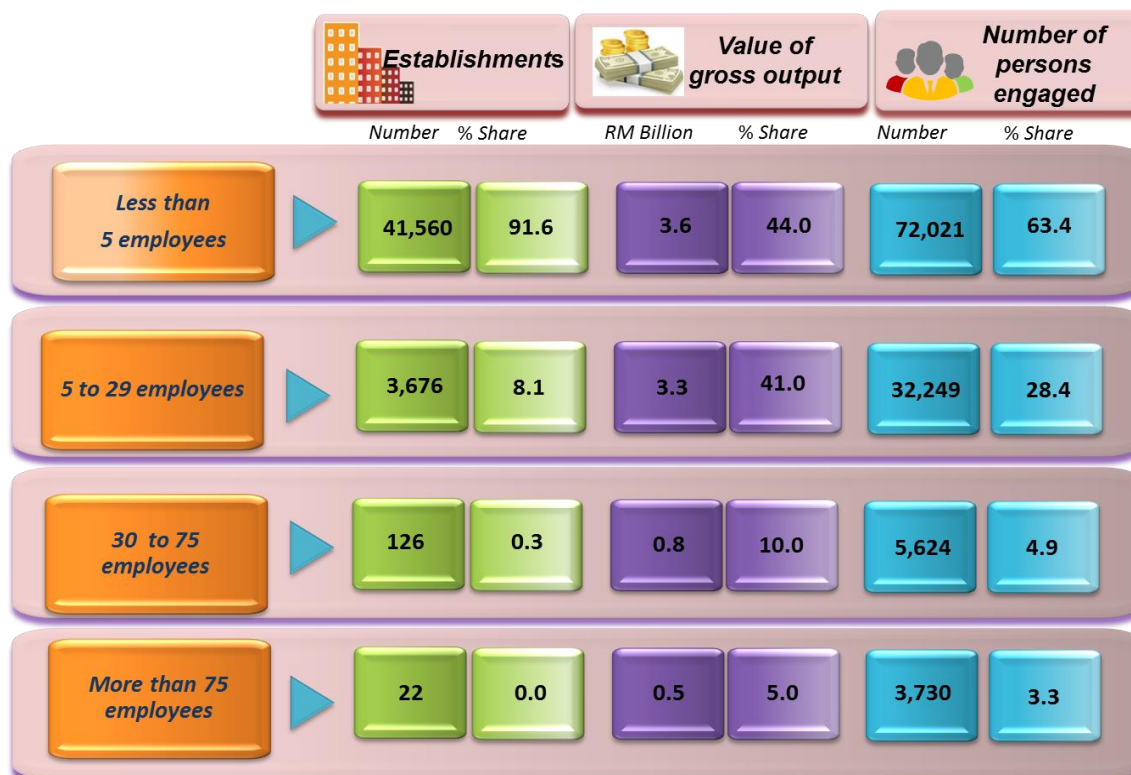
Exhibit 5: Number of Persons Engaged for Personal Services and Other Activities by Categories, 2015



6.1 SIZE OF EMPLOYMENT

Establishments with size of employment less than five person posted the highest number with 41,560 establishments or 91.6 per cent. The establishments with this size of employment recorded the highest value of gross output and number of persons engaged with 44.0 per cent and 63.4 per cent respectively as shown in **Exhibit 6**.

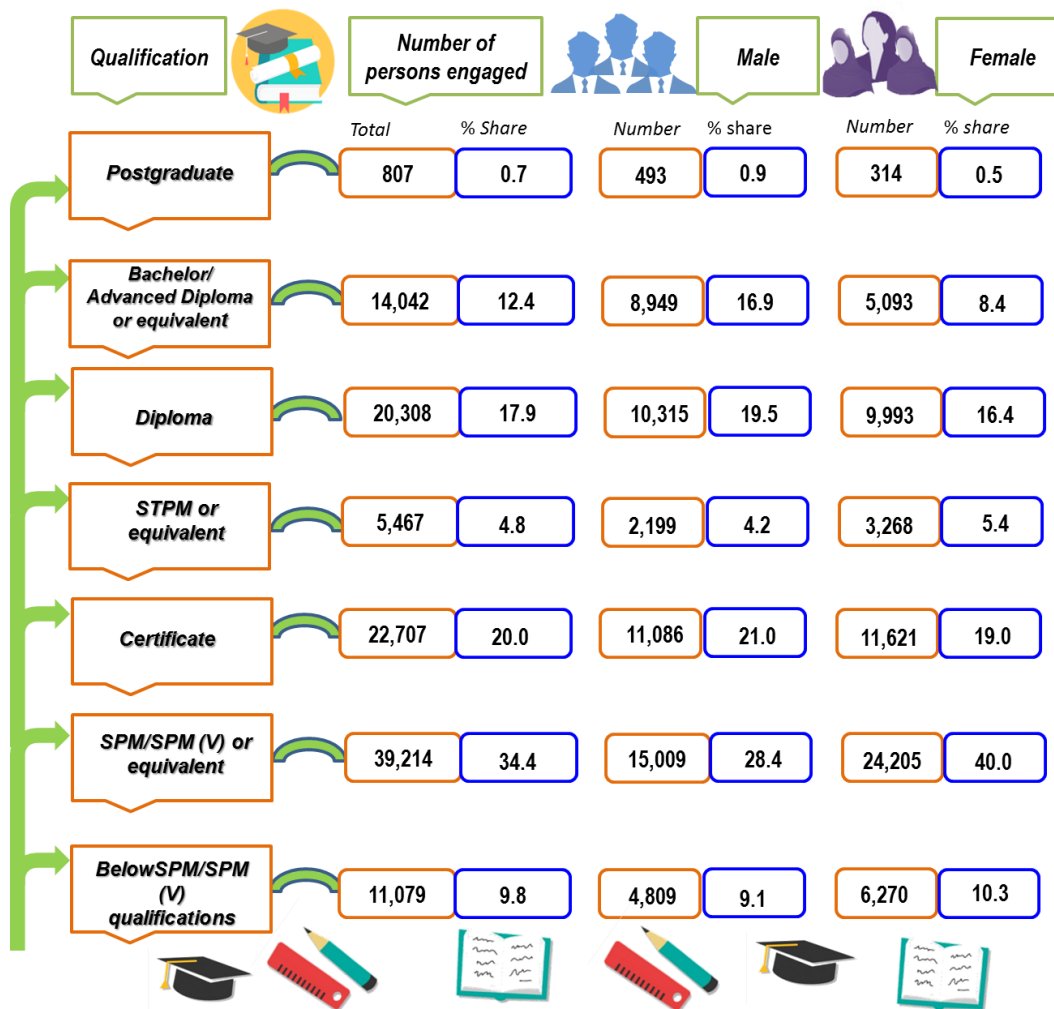
Exhibit 6: Statistics by Employment Size in Personal Services and Other Activities, 2015



6.2 QUALIFICATION OF EMPLOYEES

Employees with SPM/SPM (V) qualification or equivalent were dominant in the personal services and other activities with 39,214 persons or 34.4 per cent of a total number of persons engaged in 2015. It was followed by holders of the certificate, 22,707 persons (percentage share of 20%) and diploma holders 20,308 persons (percentage share of 17.9%) as illustrated in **Exhibit 7**. Analysis by sex showed that female workers recorded 53.5 per cent of the total number of persons engaged. Most workers in personal services and other activities were SPM/SPM (V) holders with 15,009 persons or 28.4 per cent of the male workers and 24,205 persons or 40.0 per cent of the female workers.

Exhibit 7: Qualification of Employees in Personal Services and Other Activities, 2015



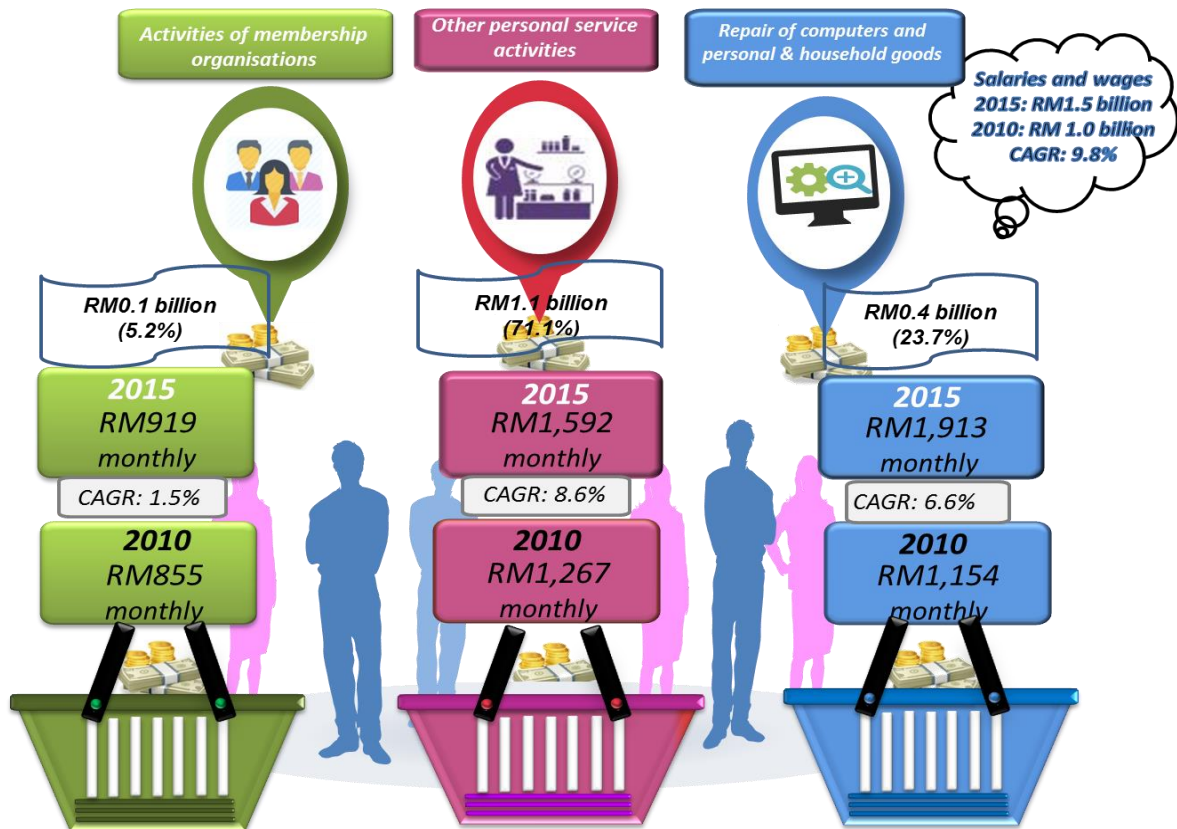
7. SALARIES & WAGES

Total salaries & wages paid in 2015 was RM1.5 billion as compared to almost RM1.0 billion in 2010 registering an annual growth rate of 9.8 per cent. Other personal service activities was the highest activities with total salaries & wages paid RM1.1 billion with a percentage

share of 71.1 per cent, followed by repair of computers and personal & household goods (RM0.4 billion; 23.7%) and activities of membership organisations (RM78 million; 5.2%).

Average monthly salary of personal service and other activities recorded RM1,595 compared to RM1,145 in 2010 with annual growth rate of 8.0 per cent. **Exhibit 8** presented the total and average monthly salary for these services by activities. The highest average monthly salary was repair of computers and personal & household goods with RM1,913, followed by other personal service activities (RM1,592) and activities of membership organisations (RM919).

Exhibit 8: Salaries & Wages and Average Monthly Salary for Personal Services and Other Activities by Activities, 2010 and 2015



8. PERFORMANCE BY STATE

Performance by state shows that Selangor recorded the highest total number of establishments registering 8,550 establishments in personal services and other activities with annual growth rate of 0.7 per cent between 2010 and 2015. It was followed by Johor (5,458 establishments; 6.5%) and Pulau Pinang (5,411 establishments; 6.7%) as illustrated in **Exhibit 9**. W.P. Kuala Lumpur contributed the highest value of gross output, RM2.3 billion; an annual growth rate of 22.8 per cent, followed by Selangor (RM2.1 billion; 10.7%) and Johor (RM0.9 billion; 15.2%). In line with the performance of gross output value,

SUMMARY OF FINDINGS

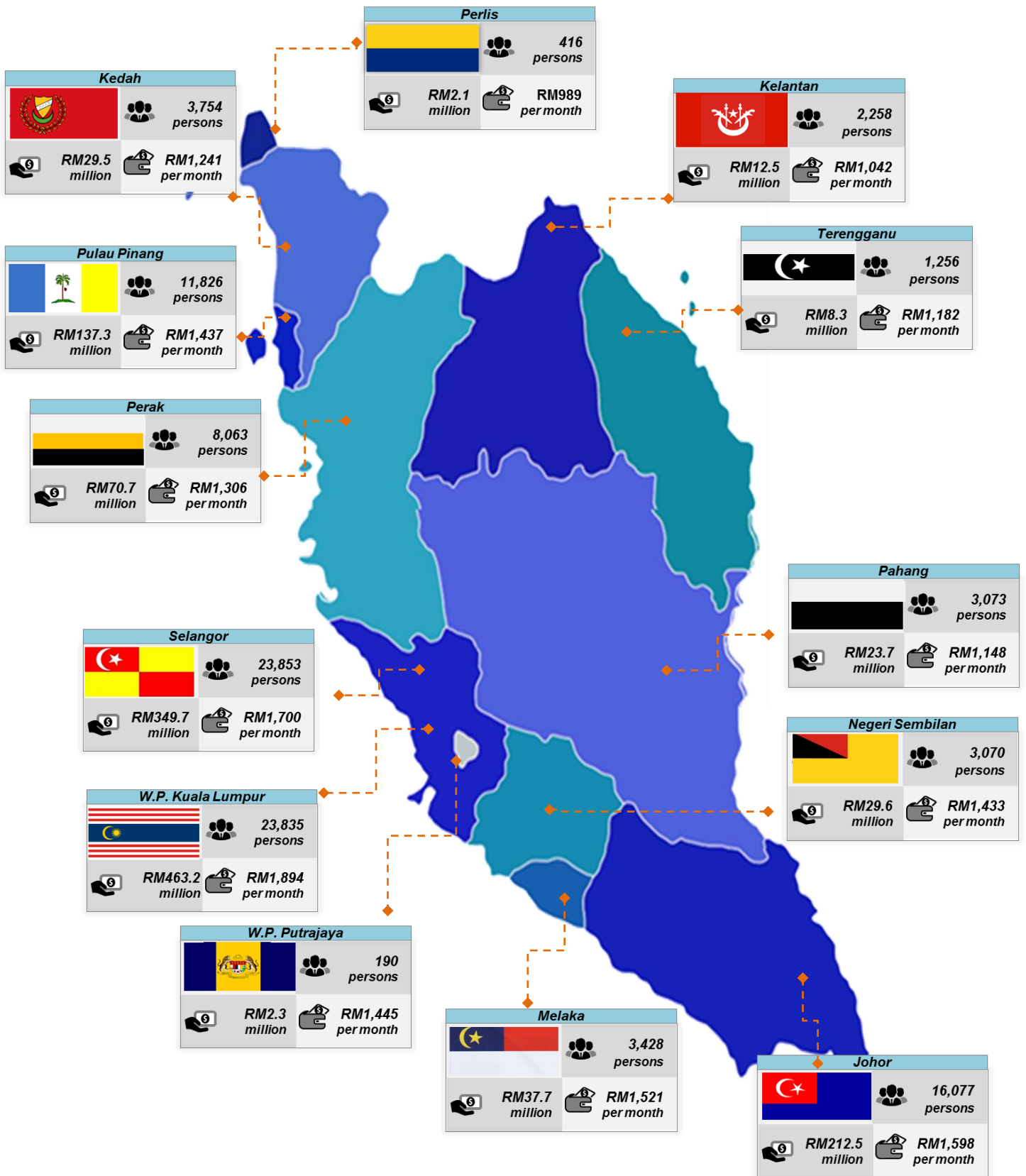
W.P. Kuala Lumpur recorded the highest value added of RM1.0 billion with the annual growth rate of 17.0 per cent, followed by Selangor (RM1.0 billion; 7.3%) and Johor (RM0.4 billion; 14.9%). Other key statistics of personal services and other activities by states are shown in **Exhibit 10**.

Exhibit 9: Number of Establishments, Value of Gross Output and Value Added for Personal Services and Other Activities by State, 2010 and 2015

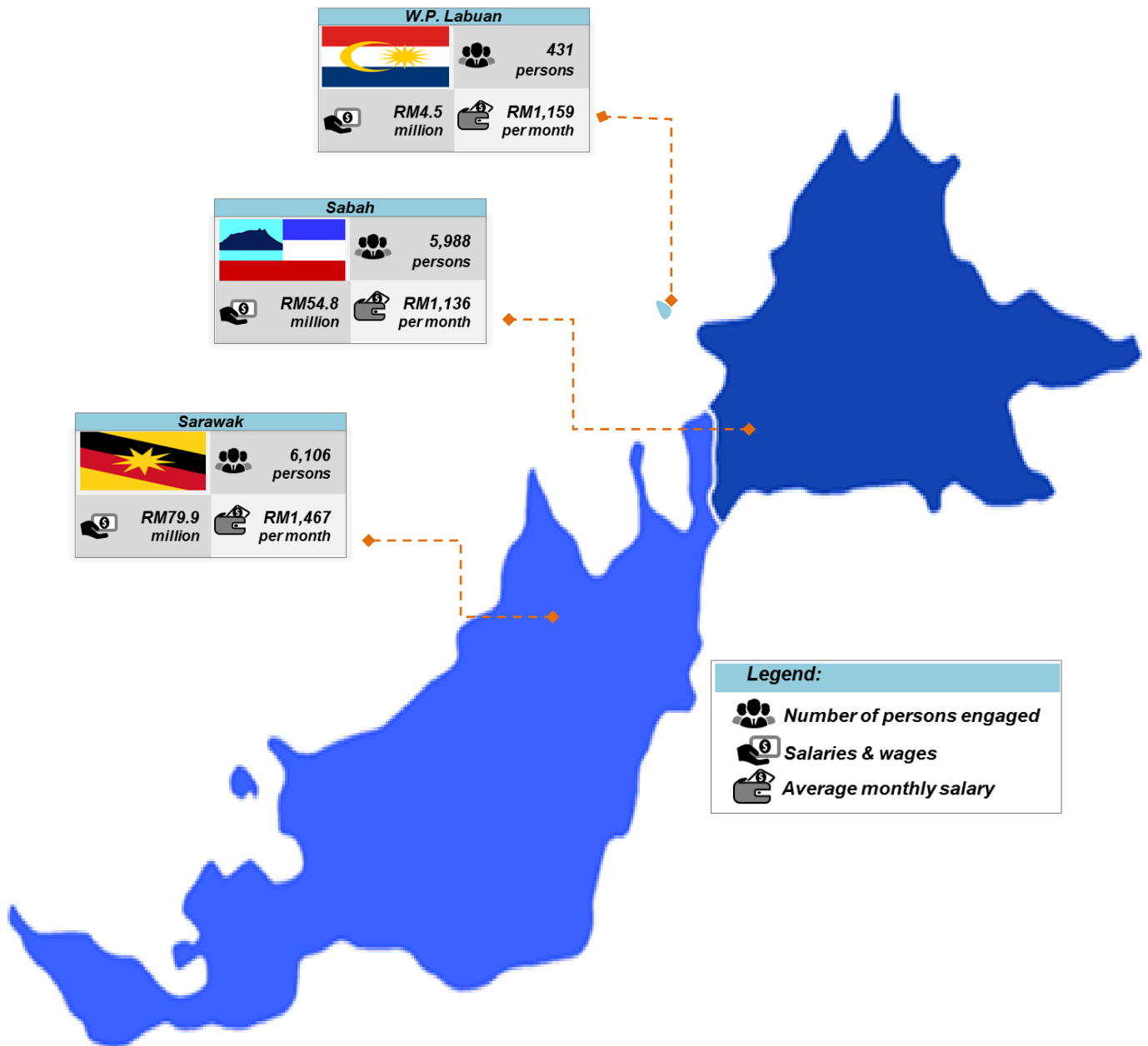
	Year	Number of establishments		Value of gross output (RM million)		Value added (RM million)		
		2015	2010	Annual growth rate *	2015	Annual growth rate	2015	Annual growth rate
SELANGOR	2015	8,550	8,271	0.7%	2,135.8	10.7%	969.8	7.3%
	2010				1,285.9		680.8	
JOHOR	2015	5,458	3,984	6.5%	897.2	15.2%	443.3	14.9%
	2010				442.2		221.6	
PULAU PINANG	2015	5,411	3,904	6.7%	835.4	1.8%	504.1	2.3%
	2010				764.1		449.7	
W.P. KUALA LUMPUR	2015	5,102	4,354	3.2%	2,263.3	22.8%	1,012.2	17.0%
	2010				811.7		461.0	
PERAK	2015	3,915	3,696	1.2%	342.7	1.3%	171.8	0.8%
	2010				321.1		166.7	
SARAWAK	2015	3,529	2,672	5.7%	370.0	1.2%	179.4	1.4%
	2010				348.2		167.0	
SABAH	2015	2,982	1,464	15.3%	322.8	15.5%	169.2	15.4%
	2010				157.0		79.1	
KEDAH	2015	2,121	1,990	1.3%	182.1	4.9%	84.6	5.1%
	2010				143.0		65.9	
PAHANG	2015	1,977	1,781	2.1%	144.0	7.1%	68.5	4.8%
	2010				102.3		54.3	
KELANTAN	2015	1,807	917	14.5%	103.8	18.7%	49.0	20.8%
	2010				44.0		19.0	
NEGERI SEMBILAN	2015	1,488	1,475	0.2%	147.2	3.0%	72.9	2.4%
	2010				127.2		64.8	
MELAKA	2015	1,424	1,184	3.8%	186.6	7.5%	95.8	9.3%
	2010				129.9		61.5	
TERENGGANU	2015	1,092	631	11.8%	61.4	12.1%	29.0	17.1%
	2010				34.7		13.2	
PERLIS	2015	314	239	5.8%	24.2	4.1%	11.1	10.2%
	2010				19.7		6.8	
W.P. LABUAN	2015	115	76	8.8%	24.0	11.5%	11.8	11.3%
	2010				14.0		6.9	
W.P. PUTRAJAYA	2015	99	91	1.7%	12.4	13.1%	5.6	16.2%
	2010				6.7		2.6	
MALAYSIA	2015	45,384	36,729	4.3%	8,052.9	11.3%	3,878.1	9.4%
	2010				4,751.6		2521.1	

Note: * There were changes to industrial classification code in 2015.

**Exhibit 10: Key Statistics Personal Services and Other Activities Services
by State, 2015**



SUMMARY OF FINDINGS

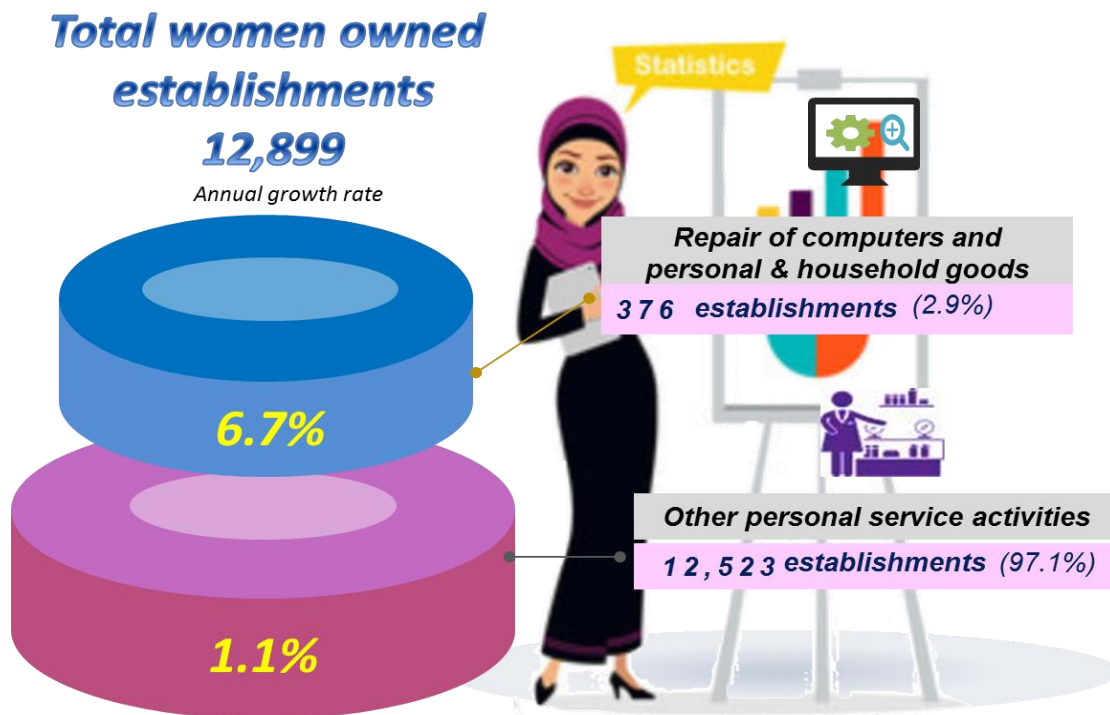


In terms of the number of persons engaged, Selangor also recorded the most number of person engaged for personal services and other activities services with 23,853 persons and percentage share of 21.1 per cent. This was followed by W.P. Kuala Lumpur 23,835 persons (21.0%) and Johor 16,077 persons (14.0%). The highest salaries & wages paid was paid in W.P.Kuala Lumpur with RM463.2 million and average monthly salary of RM1,894. It was followed by Selangor (RM349.7 million; RM1,700 per month) and Johor (RM212.5 million; RM1,598 per month).

9. WOMEN-OWNED ESTABLISHMENTS

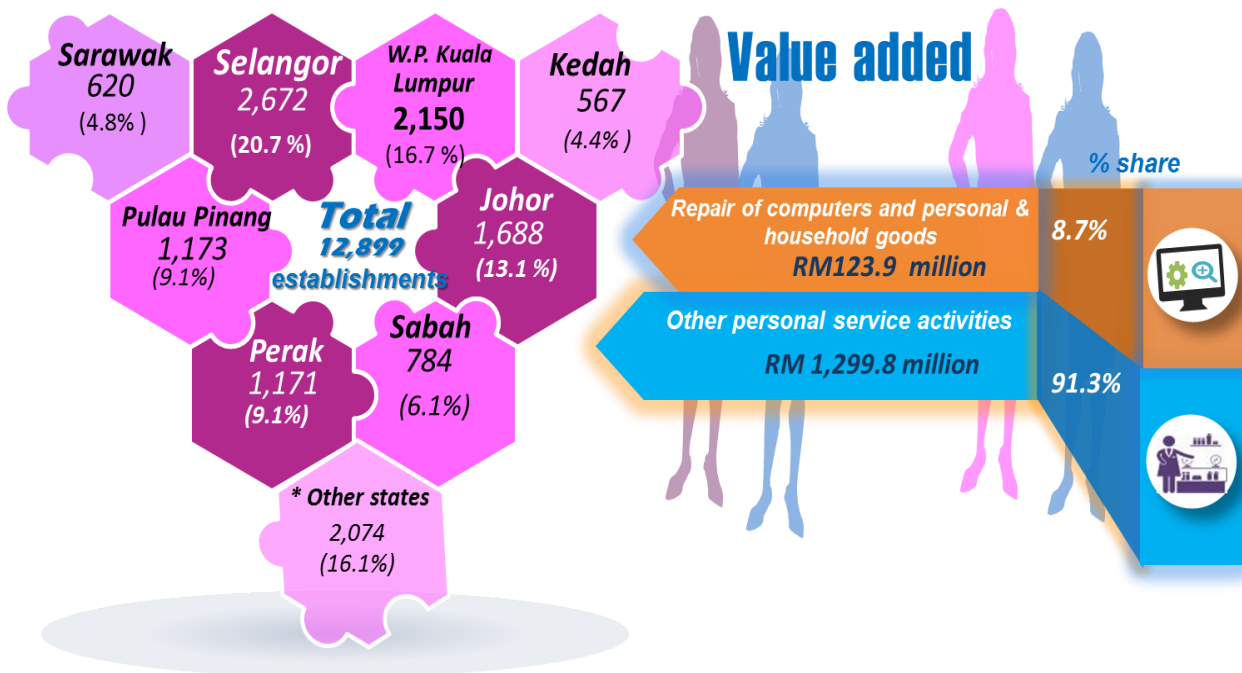
In 2015, there were 12,899 women-owned establishments in personal services and other activities services (**Exhibit 11**) as compared to 12,103 establishments in 2010 which posted an annual growth rate 1.3 per cent. It was accounted for 28.4 per cent of the total establishments. The highest number of women-owned establishments was recorded in other personal service activities with 12,523 establishments with a percentage share of 97.1 per cent, followed by repair of computers and personal & household goods (376 establishments; 2.9%).

Exhibit 11: Women-owned Establishments for Personal Services and Other Activities by Activity, 2015



The highest number of establishments was recorded in Selangor amounted to 2,672 establishments with a percentage share of 20.7 per cent, followed by W.P. Kuala Lumpur (16.7%) and Johor (13.1%). In terms of value added, RM1,423.7 million was generated by women-owned establishments in personal services and other activities. Other personal service activities was the major contributor for value added, RM1,299.8 million with a percentage share of 91.3 per cent. This was followed by repair of computers and personal & household goods (RM123.9 million; 8.7%) as shown in **Exhibit 12**.

Exhibit 12: Women-owned Establishments by State and Value Added by Activity for Personal Services and Other Activities, 2015



Note: * Other states refer to Kelantan, Melaka, Pahang, Negeri Sembilan, Perlis, Terengganu, W.P. Labuan and W.P. Putrajaya

Exhibit 13 shows that the number of persons engaged and salaries & wages in women-owned establishments 2015. It was recorded 33,164 persons engaged and the total salaries & wages disbursed amounted to RM613.7 million.

Exhibit 13: Number of Persons Engaged and Salaries & Wages of Women-owned Establishments for Personal Services and Other Activities, 2015



Muka surat ini sengaja dibiarkan kosong.

This page is deliberately left blank.



BAHAGIAN 2

PART 2

**NOTA
TEKNIKAL**

*TECHNICAL
NOTES*

1. Skop dan liputan

Banci ini meliputi pertubuhan berdaftar yang terlibat dalam **perkhidmatan persendirian dan lain-lain aktiviti** yang merangkumi aktiviti utama berikut:

- i. Aktiviti organisasi keahlian perniagaan, majikan dan profesional;
- ii. Aktiviti kesatuan buruh;
- iii. Pembaikan komputer dan peralatan komunikasi;
- iv. Pembaikan barangan persendirian dan isi rumah
- v. Aktiviti berkaitan pengebumian manusia atau haiwan dan aktiviti yang berkaitan dengannya; dan
- vi. Pencucian dan cucian kering bagi tekstil dan produk berbulu;
- vii. Aktiviti dandan rambut dan penjagaan kecantikan lain;
- viii. Aktiviti perkhidmatan lain.

Keseluruhannya, liputan banci bagi perkhidmatan kesenian, hiburan dan rekreasi terdiri daripada 49 industri di peringkat 3-digit dan 4-digit mengikut Piawaian Klasifikasi Industri Malaysia (MSIC) 2008 versi 1.0. Senarai lengkap industri seperti di **Lampiran**.

2. Sumber rangka

Sumber utama rangka pertubuhan diperoleh daripada agensi seperti Suruhanjaya Syarikat Malaysia (SSM), Pihak Berkuasa Tempatan (PBT), *Registrar of Societies* (ROS), Suruhanjaya Koperasi Malaysia (SKM), Kementerian Belia dan Sukan dan sumber-sumber lain.

Rangka dikemaskini setiap tahun untuk mengambil kira pertubuhan baru dan sebarang perubahan dalam status pertubuhan seperti tutup, tidak beroperasi, perubahan jenis aktiviti atau alamat untuk memastikan maklumat yang terdapat di dalam rangka adalah yang paling terkini.

3. Jenis aktiviti perniagaan

Jenis aktiviti perniagaan merujuk kepada aktiviti utama dan sekunder. Aktiviti utama merujuk kepada aktiviti yang mana pertubuhan menggunakan sebahagian besar daripada

sumbernya atau yang memberikan sumbangan besar dari segi pendapatan. Aktiviti sekunder didefinisikan sebagai aktiviti sampingan kepada aktiviti utama. Klasifikasi industri bagi pertubuhan adalah mengikut aktiviti utamanya berdasarkan kepada **Piawaian Klasifikasi Industri Malaysia (MSIC) 2008 Ver.1.0**. MSIC 2008 ver.1.0 adalah selaras dengan Piawaian Klasifikasi Industri Antarabangsa bagi Semua Aktiviti Ekonomi (ISIC), Semakan Ke-4, Pertubuhan Bangsa-Bangsa Bersatu, dengan pengubahsuaian untuk keperluan tempatan.

4. Konsep dan definisi

Definisi perkhidmatan persendirian dan lain-lain aktiviti yang diguna pakai dalam penerbitan ini berasaskan kepada MSIC 2008 Ver 1.0:

1. **Aktiviti keahlian organisasi**

Aktiviti ini termasuk aktiviti organisasi yang mewakili kepentingan kumpulan tertentu atau mempromosi idea kepada masyarakat umum. Organisasi berkenaan selalunya mempunyai kumpulan ahli tersendiri tetapi aktiviti mereka boleh melibatkan dan memberi manfaat kepada bukan ahli. Pecahan utama bahagian ini ditentukan oleh tujuan khidmat organisasi berkenaan, iaitu kepentingan majikan, pekerja sendiri dan komuniti tertentu, kepentingan pekerja atau mempromosikan keagamaan, politik, kebudayaan, pendidikan atau idea rekreasi dan aktiviti.

i. **Aktiviti organisasi keahlian perniagaan, majikan dan profesional**

Merujuk kepada aktiviti mempromosikan kepentingan ahli organisasi perniagaan dan pekerja. Dalam kes keahlian organisasi profesional, ia juga termasuk aktiviti mempromosikan kepentingan profesional ahli-ahli yang berkaitan dengan kerjaya mereka.

ii. **Aktiviti kesatuan buruh**

Merujuk kepada aktiviti mempromosikan kepentingan kesatuan buruh dan pekerja, aktiviti persatuan di mana ahli

adalah pekerja yang berminat dalam memberi pandangan berkaitan gaji dan situasi pekerjaan, dan langkah diambil melalui organisasi dan aktiviti kesatuan kilang, kesatuan membentuk gabungan cawangan organisasi buruh, membentuk gabungan kesatuan berasaskan perdagangan, kawasan dan struktur organisasi dan kriteria lain.

iii. **Aktiviti keahlian organisasi lain**

Merujuk kepada aktiviti mempromosikan kepentingan ahli selain organisasi keahlian perniagaan dan majikan, organisasi profesional dan kesatuan buruh. Ia termasuk aktiviti organisasi keagamaan, aktiviti organisasi politik dan aktiviti keahlian organisasi lain seperti persatuan pengguna, persatuan automobil, persatuan belia dan kelab warga emas.

2. Pembaikan komputer dan barangan persendirian dan isi rumah

Aktiviti ini termasuk pembaikan dan penyelenggaraan peralatan komputer seperti desktop, komputer riba, komputer terminal, peranti penyimpanan dan pencetak. Termasuk juga pembaikan peralatan komunikasi seperti mesin faks; radio dua hala dan barangan elektronik pengguna seperti radio dan TV; peralatan rumah dan halaman seperti mesin rumput dan *blowers*; kelengkapan kasut dan barangan kulit; perabot dan kelengkapan rumah; pakaian dan aksesori pakaian; barangan sukan; peralatan muzik; barangan hobi dan barangan persendirian dan isi rumah lain. Tidak termasuk daripada bahagian ini adalah pembaikan peralatan perubatan dan pengimejan diagnostik, peralatan menyukat dan mengukur, peralatan makmal, peralatan radar dan sonar.

i. **Pembaikan komputer dan peralatan komunikasi**

Merujuk kepada pembaikan komputer dan peralatan sampingan serta pembaikan dan penyelenggaraan peralatan komunikasi.

ii. **Pembaikan barangan persendirian dan isi rumah**

Merujuk kepada pembaikan peralatan elektronik pengguna; pembaikan kelengkapan isi rumah dan peralatan rumah dan halaman; pembaikan kelengkapan kasut dan barangan kulit; pembaikan perabot dan kelengkapan rumah serta pembaikan barangan persendirian dan isi rumah.

3. **Aktiviti Perkhidmatan persendirian lain**

Aktiviti ini termasuk semua aktiviti perkhidmatan yang tidak dinyatakan di mana-mana klasifikasi terutamanya perkhidmatan seperti basuhan dan cucian kering tekstil dan produk berbulu; dandanan rambut dan penjagaan kecantikan lain; dan pengebumian dan akitiviti yang berkaitan.

i. **Perkhidmatan pencucian dan cucian kering pakaian produk berbulu**

Merujuk kepada pencucian dan cucian kering, menggosok; mensyampu karpet dan permaidani; pengeringan dan cucian langsir sama ada di premis pengguna atau sebaliknya; penyediaan linen, baju seragam dan perkara berkaitan dengan cucian; dan perkhidmatan pembekalan pengalas.

ii. **Aktiviti dandanan rambut dan penjagaan kecantikan lain**

Merujuk kepada dandanan rambut dan penjagaan kecantikan lain; dan aktiviti sauna, mandian stim dan salon mengurut. Pembuatan rambut palsu dan aktiviti pusat kesihatan tidak termasuk dalam kumpulan ini.

iii. **Perkhidmatan pengurusan mayat dan aktiviti berkaitan**

Merujuk kepada penyediaan pengurusan mayat untuk pengebumian atau pembakaran dan perkhidmatan pengawetan mayat; perkhidmatan penyediaan pengebumian atau pembakaran; penyewaan ruang yang lengkap dalam bilik pengebumian; penyewaan dan penjualan ruang kubur; dan penyelenggaraan kubur dan makam. Aktiviti perkhidmtan pengebumian mengikut keagamaan tidak termasuk dalam kumpulan ini.

iv. Aktiviti perkhidmatan lain

Merujuk kepada aktiviti astrologikal dan kerohanian; aktiviti sosial seperti perkhidmatan pengiring, temujanji dan biro perkahwinan; perkhidmatan jagaan haiwan termasuk penumpangan, perapian, mendudukkan dan melatih binatang peliharaan; pengilat kasut, porter, valet memakir kereta, operasi konsensi bagi perkhidmatan mesin duit syiling untuk kegunaan persendirian seperti kios foto, mesin penimbang berat dan operasi lokar bersyiling; dan aktiviti perkhidmatan lain.

5. Unit melapor

Bilangan pertubuhan yang dilaporkan dalam penerbitan ini berbeza dengan data awalan yang dikeluarkan dalam penerbitan Banci Ekonomi 2016 Statistik Pertubuhan. Perbezaan ini disebabkan oleh analisis terkini status cawangan, pengelasan industri dan status operasi pertubuhan.

Unit melapor bagi banci ini ialah **pertubuhan**. Sesebuah pertubuhan secara ideal ditakrifkan sebagai “satu unit ekonomi yang bergiat di bawah satu hak milik atau penguasaan tunggal, iaitu di bawah satu entiti yang sah. Ia menjalankan satu jenis subsektor ekonomi utama di satu tempat/lokasi fizikal”. Setiap pertubuhan diberikan klasifikasi industri berdasarkan aktiviti utamanya dan bukannya mengikut aktiviti syarikat induk.

Setiap cawangan daripada organisasi yang mempunyai beberapa cawangan di lokasi yang berbeza dari segi konsep dianggap sebagai pertubuhan yang berlainan. Pertubuhan berkenaan diminta memberikan penyata yang berasingan bagi setiap kegiatannya dari segi nilai. Walau bagaimanapun, dari segi praktis akaun biasanya disediakan secara berpusat kerana kesukaran untuk memperoleh data yang berasingan bagi setiap unit atau cawangan. Entiti atau ‘*enterprise*’ ini akan dianggap sebagai satu unit melapor dan dibenarkan

mengemukakan soal selidik yang menggabungkan semua unit atau cawangannya.

6. Nilai output kasar

Nilai output kasar ditakrifkan dengan memasukkan perkara berikut:

- Pendapatan daripada perkhidmatan yang disediakan
- + Nilai jualan barangan yang dibeli untuk dijual semula
- + Perkhidmatan pengurusan
- + Komisen dan brokeraj yang diperolehi
- + Yuran yang diterima daripada keahlian
- + Pendapatan daripada perkhidmatan perundingan
- + Pendapatan daripada sewa yang diterima kecuali tanah
- + Pendapatan operasi lain
- Nilai jualan barangan yang dibeli untuk dijual semula dalam keadaan sama seperti dibeli

7. Nilai input perantaraan

Bermula tahun 2012, perbelanjaan penyelidikan dan pembangunan telah dikeluarkan daripada pengiraan input perantaraan dan diambilkira sebagai perbelanjaan harta selaras dengan penggunaan *Recommendation of System of National Accounts (SNA) 2008*. Nilai input perantaraan ditakrifkan dengan memasukkan perkara berikut:

- Perbelanjaan barangan, bahan dan perkhidmatan
- + Premium insurans kecuali insurans pampasan kerja
- + Royalti dan yuran paten
- + Caj bank
- + Pembelian elektrik dan air
- + Pembelian bahan pembakar, pelincir dan gas
- + Pembelian perkhidmatan pengangkutan
- + Perbelanjaan penyelidikan dan pembangunan
- + Perbelanjaan pematuhan alam sekitar
- + Pendapatan operasi lain
- + Stok Akhir
- Stok awal

8. Nilai ditambah

Nilai ditambah adalah tambahan kepada nilai barangan dan perkhidmatan yang dikeluarkan oleh sesebuah pertubuhan. Nilai ditambah diperoleh daripada perbezaan antara nilai output kasar dengan nilai input perantaraan.

9. Bilangan pekerja

Bilangan pekerja meliputi semua orang yang diambil bekerja pada bulan Disember atau pada tempoh pembayaran gaji terakhir pada tahun rujukan. Bilangan orang yang bekerja dikategorikan seperti berikut:

i. Pemilik yang bekerja dan rakan niaga yang aktif

Kategori ini merujuk kepada semua pemilik perseorangan dan rakan niaga, sambilan atau sepenuh masa, yang bekerja dengan aktif dalam pertubuhan. Justeru itu, ia tidak termasuk rakan niaga yang tidak aktif.

ii. Pekerja keluarga tanpa gaji

Kategori ini meliputi semua ahli isi rumah pemilik pertubuhan yang melaksanakan kerja tertentu (sepenuh masa atau sambilan) dan bekerja sekurang-kurangnya satu pertiga daripada waktu bekerja biasa yang diamalkan oleh pertubuhan berkenaan tanpa mendapat bayaran secara 'regular' sama ada dalam bentuk wang tunai atau mata benda bagi kerja yang dilakukan. Biasanya pekerja berkenaan mendapat makanan, tempat tinggal dan bantuan lain sebagai sebahagian daripada ahli isi rumah pemilik dan terus mendapatnya sama ada mereka bekerja atau tidak di pertubuhan tersebut.

iii. Pekerja bergaji sepenuh masa

Ia merujuk kepada semua pekerja bergaji yang bekerja sekurang-kurangnya 6 jam sehari dan sekurang-kurangnya 20 hari sebulan.

iv. Pekerja bergaji sambilan

Ia merujuk kepada semua pekerja bergaji yang bekerja kurang daripada 6 jam sehari dan/atau kurang daripada 20 hari sebulan.

10. Kategori kemahiran

Kategori pekerjaan telah dikelaskan berdasarkan Piawaian Pengkelasan Pekerjaan Malaysia (MASCO) 2013 adalah seperti berikut:

i. Pekerja mahir

Pengurusan, profesional, penyelidik serta juruteknik dan Profesional bersekutu;

ii. Pekerja separuh mahir

Pekerja sokongan perkeranian, Perkhidmatan dan jualan, kemahiran dan pertukangan yang berkaitan serta operator mesin, loji dan pemasang; dan

iii. Pekerja kurang mahir

Pekerja asas

11. Nilai harta tetap

Harta tetap meliputi semua barangan, baru atau terpakai, aset ketara atau aset tidak ketara yang digunakan secara berulang atau berterusan yang mempunyai hayat produktif lebih daripada setahun. Ia termasuk tanah, bangunan dan struktur, alat pengangkutan, komputer dan '*peripheral equipment*', mesin, peralatan serta perabot dan pemasangan lain. Nilai harta tetap awal dan akhir bagi tahun rujukan 2015 adalah berasaskan nilai buku bersih. Pembelian, pindaan dan pembaikan besar atau perbelanjaan modal pada tahun berkenaan dikira pada nilai kos sebenar yang dibayar. Nilai harta tetap yang dijual dalam tahun semasa juga dikira pada nilai sebenar.

12. Pembundaran

Penjumlahan komponen mungkin berbeza dengan angka jumlah kecil atau besar disebabkan pembundaran.

13. Kadar pertumbuhan tahunan dikompaun (CAGR)

Pengiraan kadar pertumbuhan tahunan dikompaun (r) adalah berdasarkan formula berikut:

$$Y_t = Y_o(1 + r)^t$$

di mana r ,

$$r = \left[e^{\frac{1}{t} \ln \left(\frac{Y_t}{Y_o} \right)} - 1 \right] \times 100$$

dimana,

Y_t = Nilai pada tahun semasa

Y_o = Nilai pada tahun sebelum

t = Bilangan tahun, $Y_t - Y_o$

r = Kadar pertumbuhan tahunan dikompaun

14. Simbol dan singkatan

-	: tiada
%	: peratus
&	: dan
>	: lebih daripada
<	: kurang daripada
}	: digabungkan
RM	: Ringgit Malaysia
dll.	: dan lain-lain
spt.	: seperti
t.t.t.l.	: tidak terkelas di tempat lain
W.P.	: Wilayah Persekutuan
CAGR	: kadar pertumbuhan tahunan dikompaun

1. Scope and coverage

*The census covered all registered establishments engaged in **information on personal services and other activities** which included main activities as follows:*

- i. Activities of business, employers and professional membership organisations*
 - ii. Activities of trade unions*
 - iii. Activities of other membership organisations*
 - iv. Repair of computer and communication equipment*
 - v. Repair of personal and household goods*
 - vi. Washing and dry-cleaning of textile and fur products*
 - vii. Hairdressing and other beauty treatment*
 - viii. Funeral and related activities of human or animal corpses and related activities*
- Other services activities*

*Overall, coverage of the census for arts information on personal services and other activities was 49 industries at 3-digit and 4-digit level under the Malaysia Standard Industrial Classification (MSIC), 2008. The complete lists of industries are shown in **Appendix**.*

2. Source of frame

The main source of establishment frame is obtained from Companies Commission of Malaysia (CCM), Local Authorities (PBT), Registrar of Societies (ROS), Ministry of Youth and Sports and other sources.

The frame is updated annually to take into account new establishments and to record any changes in the status of the establishments such as closed down, not in operation, changes in activities or addresses to make sure the information in the frame is the latest update.

3. Type of business activity

The type of business activity refers to both principal and secondary activities. The principal activity refers to the activity to which the establishment devoted most of its resources or to which it contributes the largest income. Secondary activities are defined as those incidental or ancillary to the principal activity.

The classification of the industry of the establishment is based on the principal activity and is in accordance to the Malaysia Standard Industrial Classification (MSIC) 2008 Ver.1.0. The MSIC 2008 conforms to the International Standard Industrial Classification of All Economic Activities (ISIC), Revision 4, United Nations, with modifications to suit local conditions.

4. Concepts and definitions

The definition of personal services and other activities adopted in this publication is based on the recommendations of the MSIC 2008 ver. 1.0:

1. Activities of membership organisations

This activity includes of organisations representing interests of special group or promoting ideas to the general public. These organisations usually have a constituency of members, but their activities may involve and benefit non-members as well. The primary breakdown of this division is determined by the purpose of organisations serve; namely interests of employees, self-employed individuals and the specific community, interests of employees or promotion of religious, political, cultural, educational or recreational ideas and activities.

i. Activities of business, employers and professional membership organisations

This activity includes that promote the interests of the members of business and employers organisations. In the case of professional membership organisations it also includes the activities of promoting the professional interest of members of the profession.

ii. Activities of trade unions

This activity includes that promote the interests of organisations labour and union employees, activities of associations whose members are employees interested chiefly in the representation of their views concerning the salary and work situation, and in concerted action through

organisation and activities of single plant unions, of unions composed of affiliated branches labour organisations composed of affiliated unions on the basis of trade, region, organisational structure or other criteria.

iii. Activities of others membership organisations

This activity includes promote the interests of their members except business and employers organisations, professional organisations and trade unions. This is include activities of religious organisations, activities of political organisations and activities of other membership organisations such as consumer associations, automobile associations, associations of youth and senior citizens.

2. Repair of computers and personal and household goods

This activity includes the repair and maintenance of computers peripheral equipment such as desktops, laptops, computer terminals, storage devices and printers. It also includes the repair of communications equipment such as fax machine; two-way radios and consumer electronic such as radios and TVs; home and garden equipment such as lawn-mowers and blowers; footwear and leather goods; furniture and home furnishings; clothing and clothing accessories; sporting goods; musical instruments; hobby articles and other personal and household goods. Excluded from this division is the repair of medical and diagnostic imaging equipment, measuring and surveying instruments, laboratory instruments, radar and sonar equipments.

i. Repair of computers and communication equipment

This activity includes repair of computers and peripheral equipment and repair and maintenance of communication equipment.

ii. Repair of personal and household goods

This activity of consumer electronics; repair of household appliances and home and garden equipment; repair of

footwear and leathers goods; repair of furniture and home furnishings and repair of personal and household goods.

3. Others personal services activities

This activity includes all service activities not mentioned elsewhere in the classification. Notably it includes types of services such as washing and dry-cleaning of textiles and fur products; hairdressing and other beauty treatment and funeral and related activities.

i. Washing and dry-cleaning of textiles and fur products

This activity includes the laundering and dry-cleaning, pressing; carpet and rug shampooing; drapery and curtain cleaning whether on clients' premises or not, provision of linens, work uniform and related items by laundries; and diaper supply services.

ii. Hairdressing and other beauty treatment

This activity includes the hairdressing and others beauty treatment; and the activities of sauna, steam baths and massage salons. Excludes manufacture of wigs and activities of fitness centres.

iii. Funeral services and related activities

This activity to the preparing the dead for burial or cremation and embalming and morticians' services; providing burial or cremation services; rental of equipped space in funeral parlours; rental or sale of graves; and maintenance of graves and mausoleums.

Excludes religious funeral services activities.

iv. Other service activities

This activity the astrological and spiritualists' activities; social activities such as escort services, dating services, services of marriage bureau; pet care services; shoe shiners, porters, valet car parkers; concession operation of coin-operated personal service machines such as photo booths,

weighing machines and coin-operated machines; and other service activities.

5. Reporting unit

The number of establishments reported in this publication were different from preliminary data published in the Economic Census 2016 Establishment Statistics. The difference was due to the latest analysis of branches status, reclassification of industry and operational status of the establishments.

*The reporting unit for this Census is the **establishment**. An establishment ideally defined as “an economic unit that engaged in one activity, under a single legal entity and operating in a single physical location”. Each establishment was assigned an industry classification based on its principal activity and not to that of its parent company.*

Each branch of the multiple organisation has branches in different locations of conceptually treated as the different organisation. The establishment was requested to give separate returns for each activity in terms of value. However, if in practice, the accounts were centrally kept such that it was not possible to obtain separate data for each individual unit or branch. The entity or enterprise was treated as a single reporting unit and allowed to submit a consolidated questionnaire covering all units or branches

6. Value of gross output

The value of gross output is defined to include the following items:

- Revenue from services provided*
- + Value of goods sold in the same condition as purchased*
- + Income from management services*
- + Commissions and brokerage earned*
- + Income from Fees earned from membership*
- + Rental income received except land*
- Other operating income*
- Value of goods purchased for resale in the same condition as purchased*

7. Value of intermediate input

Effective 2012, research and development expenditure has been removed from calculation of intermediate input and treated as capital asset in line with the recommendation of System of National Accounts (SNA) 2008. The value of intermediate input is defined to include the following items:

- Purchase of goods, materials and services*
- + *Insurance premiums except workers' compensation work*
- + *Royalty and patent fees*
- + *Bank charges*
- + *Research and development expenditure*
- + *Environmental compliance expenditure*
- + *Management fees*
- + *Other operating expenditure*
- + *Closing stocks*
- *Opening stocks*

8. Value added

Value added is the increment to the value of commodities and services contributed by the establishment. This value is derived as the difference between the value of gross output and value of intermediate input.

9. Total number of persons engaged

Employment covers all persons engaged during December or the last pay period of the reference year. The number of persons engaged was classified under the following categories:

i. Working proprietors and active business partner

This category refers to all individual proprietors and partners, part-time or full time, who are actively engaged in the work of the establishment. It therefore, excludes silent and inactive partners.

ii. Unpaid family workers

This category encompasses all persons (full-time or part-time) in the household of the owners of the establishment who perform a specified job and work for a minimum of one third of the normal working time of the establishment but do not receive regular payment, either in cash or in kind for work done. Such workers generally receive food, shelter and other support as part of the household of an owner but this would continue whether they worked in the establishment or not.

iii. Paid full-time employees

It refers to all paid workers who work for at least 6 hours a day and 20 days a month.

iv. Paid part-time employees

It refers to all paid workers who work for less than 6 hours a day and/or less than 20 days a month.

10. Category of skilled *Job category has also been categorised according to Malaysia Standard Classification of Occupations 2013 (MASCO) as follow:*

i. High-skilled

Managers and professionals, researcher, technician and associate professionals;

ii. Semi-skilled

*Clerical support, service and sales, craft and relates trades workers and plant and machine operators and assemblers;
and*

iii. Low-skilled

Elementary workers

11. Value of assets *Fixed assets cover all goods, new or used, tangible or intangible and used repeatedly or continuously that have a*

normal economic life span of more than one year. This included land, buildings and structure, transport equipment, computer and peripheral equipment, other machinery, equipment and furniture and fittings. Value of fixed assets as at the beginning and end of 2015 was based on net book value. Purchases, alterations and major repairs or capital expenditure during the year were valued at actual costs incurred. Value of fixed assets sold during the year refers to the realised value.

12. Rounding

The sum of the component figures may not tally with the sub-total or total figures due to rounding.

13. Compound annual growth rate (CAGR)

The calculation of compound annual growth rate (r) is based on the following formula:

$$Y_t = Y_o(1 + r)^t$$

where r ,

$$r = \left[e^{\frac{1}{t} \ln \left(\frac{Y_t}{Y_o} \right)} - 1 \right] \times 100$$

where,

Y_t = Value at current year

Y_o = Value at previous year

t = Number of years, $Y_t - Y_o$

r = Compound annual growth rate

14. Abbreviation

and symbol

-	:	<i>nil</i>
%	:	<i>per cent</i>
&	:	<i>and</i>
>	:	<i>more than</i>
<	:	<i>less than</i>
}	:	<i>combined</i>
RM	:	<i>Ringgit Malaysia</i>
<i>etc.</i>	:	<i>et cetera</i>
<i>i.e</i>	:	<i>that is</i>
<i>n.e.c</i>	:	<i>not elsewhere classified</i>
<i>W.P.</i>	:	<i>Federal Territory</i>
CAGR	:	<i>compounded annual growth rate</i>

Muka surat ini sengaja dibiarkan kosong.

This page is deliberately left blank.



BAHAGIAN 3

PART 3

**SENARAI
JADUAL**

*LIST OF
TABLES*

Jadual 1.1: Perangkaan utama perkhidmatan persendirian dan lain-lain aktiviti, 2010 dan 2015

Table 1.1: Principal statistics of personal services and other activities, 2010 and 2015

Tahun Year	Bilangan pertubuhan Number of establishments	Nilai output kasar Value of gross output	Nilai input perantaraan Value of intermediate input	Nilai ditambah Value added	Bilangan pekerja pada bulan Disember atau pada tempoh gaji akhir Number of persons during December or the last pay period	Gaji & upah yang dibayar Salaries & wages paid	Nilai harta tetap yang dimiliki pada akhir tahun Value of fixed assets owned as at the end of the year
		(RM '000)	(RM '000)	(RM '000)		(RM '000)	(RM '000)
2015	45,384	8,052,877	4,174,913	3,877,964	113,624	1,518,298	3,573,942
2010	36,729	4,751,607	2,230,549	2,521,058	95,490	950,597	2,192,920

Jadual 1.2: Perangkaan utama perkhidmatan persendirian dan lain-lain aktiviti mengikut aktiviti, 2015

Table 1.2: Principal statistics of personal services and other activities by activities, 2015

Aktiviti <i>Activities</i>	Bilangan pertubuhan <i>Number of establishments</i>	Nilai output kasar <i>Value of gross output</i>	Nilai input perantaraan <i>Value of intermediate input</i>	Nilai ditambah <i>Value added</i>	Bilangan pekerja pada bulan Disember atau pada tempoh gaji akhir <i>Number of persons during December or the last pay period</i>	Gaji & upah yang dibayar <i>Salaries & wages paid</i>	Nilai harta tetap yang dimiliki pada akhir tahun <i>Value of fixed assets owned as at the end of the year</i>
		(RM '000)	(RM '000)	(RM '000)		(RM '000)	(RM '000)
Jumlah/ Total	45,384	8,052,877	4,174,913	3,877,964	113,624	1,518,298	3,573,942
Aktiviti keahlian organisasi <i>Activities of membership organisations</i>	20,782	911,697	595,264	316,433	7,117	78,467	1,444,612
Pembaikan komputer dan barangan persendirian dan isi rumah <i>Repair of computers and personal and household goods</i>	4,698	1,946,221	957,600	988,621	21,292	359,626	368,275
Aktiviti perkhidmatan persendirian lain <i>Other personal service activities</i>	19,904	5,194,959	2,622,049	2,572,910	85,215	1,080,205	1,761,056

Jadual 1.3: Perangkaan utama perkhidmatan persendirian dan lain-lain aktiviti mengikut negeri, 2015

Table 1.3: Principal statistics of personal services and other activities by states, 2015

Negeri States	Bilangan pertubuhan <i>Number of establishments</i>	Nilai output kasar <i>Value of gross output</i>	Nilai input perantaraan <i>Value of intermediate input</i>	Nilai ditambah <i>Value added</i>	Bilangan pekerja pada bulan Disember atau pada tempoh gaji akhir <i>Number of persons engaged during December or the last pay period</i>	Gaji & upah yang dibayar <i>Salaries & wages paid</i>	Nilai harta tetap yang dimiliki pada akhir tahun <i>Value of fixed assets owned as at the end of the year</i>
		(RM '000)	(RM '000)	(RM '000)		(RM '000)	(RM '000)
Jumlah/ Total	45,384	8,052,877	4,174,913	3,877,964	113,624	1,518,298	3,573,942
Johor	5,458	897,240	453,950	443,290	16,077	212,502	339,231
Kedah	2,121	182,051	97,443	84,608	3,752	29,466	106,468
Kelantan	1,807	103,752	54,784	48,968	2,260	12,509	94,172
Melaka	1,424	186,625	90,803	95,821	3,427	37,683	106,378
Negeri Sembilan	1,488	147,214	74,362	72,851	3,055	29,432	68,294
Pahang	1,977	144,036	75,543	68,494	3,072	23,694	243,082
Perak	3,915	342,670	170,891	171,779	8,059	70,648	185,178
Perlis	314	24,174	13,119	11,055	416	2,053	8,656
Pulau Pinang	5,411	835,404	331,302	504,102	11,828	137,364	295,667
Sabah	2,982	322,815	153,565	169,250	5,988	54,812	188,728
Sarawak	3,529	370,049	190,651	179,398	6,106	79,859	252,011
Selangor	8,550	2,135,755	1,165,915	969,841	23,716	346,611	660,353
Terengganu	1,092	61,363	32,384	28,979	1,254	8,341	30,614
W.P. Kuala Lumpur	5,102	2,263,301	1,251,124	1,012,177	23,983	466,253	986,138
W.P. Labuan	115	23,996	12,207	11,788	431	4,505	4,267
W.P. Putrajaya	99	12,433	6,870	5,563	200	2,567	4,706

Jadual 1.4: Perangkaan utama perkhidmatan persendirian dan lain-lain aktiviti mengikut taraf sah, 2015

Table 1.4: Principal statistics of personal services and other activities by legal status, 2015

Taraf sah <i>Legal status</i>	Bilangan pertubuhan <i>Number of establishments</i>	Nilai output kasar <i>Value of gross output</i>	Nilai input perantaraan <i>Value of intermediate input</i>	Nilai ditambah <i>Value added</i>	Bilangan pekerja pada bulan Disember atau pada tempoh gaji akhir <i>Number of persons engaged during December or the last pay period</i>	Gaji & upah yang dibayar <i>Salaries & wages paid</i>	Nilai harta tetap yang dimiliki pada akhir tahun <i>Value of fixed assets owned as at the end of the year</i>
		(RM '000)	(RM '000)	(RM '000)		(RM '000)	(RM '000)
Jumlah/ Total	45,384	8,052,877	4,174,913	3,877,964	113,624	1,518,298	3,573,942
Hak milik perseorangan <i>Individual proprietorship</i>	19,169	2,784,544	1,305,939	1,478,605	67,036	609,474	637,631
Perkongsian <i>Partnership</i>	1,575	382,827	178,190	204,637	8,308	81,966	79,166
Syarikat sendirian berhad <i>Private limited company</i>	3,857	3,973,773	2,095,506	1,878,268	31,162	748,391	1,412,532
Koperasi <i>Co-operative</i>	16	5,765	4,572	1,193	31	731	2,041
Pertubuhan persendirian yang tidak mencari keuntungan <i>Private non-profit making organisation</i>	20,767	905,968	590,707	315,261	7,087	77,736	1,442,572

Jadual 1.5: Perangkaan utama perkhidmatan persendirian dan lain-lain aktiviti mengikut hak milik, 2015

Table 1.5: Principal statistics of personal services and other activities by ownerships, 2015

Hak milik <i>Ownership</i>	Bilangan pertubuhan <i>Number of establishments</i>	Nilai output kasar <i>Value of gross output</i>	Nilai input perantaraan <i>Value of intermediate input</i>	Nilai ditambah <i>Value added</i>	Bilangan pekerja pada bulan Disember atau pada tempoh gaji akhir <i>Number of persons engaged during December or the last pay period</i>	Gaji & upah yang dibayar <i>Salaries & wages paid</i>	Nilai harta tetap yang dimiliki pada akhir tahun <i>Value of fixed assets owned as at the end of the year</i>
		(RM '000)	(RM '000)	(RM '000)		(RM '000)	(RM '000)
Jumlah/ Total	45,384	8,052,877	4,174,913	3,877,964	113,624	1,518,298	3,573,942
Residen Malaysia <i>Malaysian residents</i>	45,332	7,862,683	4,079,046	3,783,637	111,800	1,476,325	3,562,231
Bukan residen Malaysia <i>Non-Malaysian residents</i>	42	185,504	93,544	91,960	1,754	40,642	10,883
Hak milik bersama <i>Joint ownership</i>	10	4,690	2,323	2,367	70	1,331	828

Jadual 1.6: Perangkaan utama perkhidmatan persendirian dan lain-lain aktiviti mengikut saiz output, 2015

Table 1.6: Principal statistics of personal services and other activities by size of output, 2015

Size output Output size		Bilangan pertubuhan Number of establishments	Nilai output kasar Value of gross output	Nilai input perantaraan Value of intermediate input	Nilai ditambah Value added	Bilangan pekerja pada bulan Disember atau pada tempoh gaji akhir Number of persons engaged during December or the last pay period	Gaji & upah yang dibayar Salaries & wages paid	Nilai harta tetap yang dimiliki pada akhir tahun Value of fixed assets owned as at the end of the year
(RM '000)			(RM '000)	(RM '000)	(RM '000)		(RM '000)	(RM '000)
Jumlah/ Total		45,384	8,052,877	4,174,913	3,877,964	113,624	1,518,298	3,573,942
Kurang daripada Less than *	300	40,599	2,796,279	1,415,707	1,380,572	72,846	601,679	1,487,291
300 - < 3,000		4,474	2,933,425	1,506,623	1,426,803	29,937	613,861	1,228,697
3,000 - < 20,000		299	1,754,938	944,252	810,686	8,769	241,499	439,568
20,000 dan lebih and above		12	568,234	308,332	259,903	2,072	61,260	418,387

54

* Nota : Hanya pertubuhan aktiviti keahlian organisasi berada dalam saiz output kurang daripada 300

Note : Only the establishments of the activities of membership organisations are in the size of the output less than 300

Jadual 1.7: Perangkaan utama perkhidmatan persendirian dan lain-lain aktiviti mengikut saiz pekerja, 2015

Table 1.7: Principal statistics of personal services and other activities by size of employment, 2015

Saiz pekerja <i>Size of employment</i>		Bilangan pertubuhan <i>Number of establishments</i>	Nilai output kasar <i>Value of gross output</i>	Nilai input perantaraan <i>Value of intermediate input</i>	Nilai ditambah <i>Value added</i>	Bilangan pekerja pada bulan Disember atau pada tempoh gaji akhir <i>Number of persons engaged during December or the last pay period</i>	Gaji & upah yang dibayar <i>Salaries & wages paid</i>	Nilai harta tetap yang dimiliki pada akhir tahun <i>Value of fixed assets owned as at the end of the year</i>
			(RM '000)	(RM '000)	(RM '000)		(RM '000)	(RM '000)
Jumlah/ Total		45,384	8,052,877	4,174,913	3,877,964	113,624	1,518,298	3,573,942
Kurang daripada <i>Less than</i>								
	5	41,560	3,650,197	1,894,086	1,756,111	72,021	643,858	1,994,140
55	5 - 29	3,676	3,241,939	1,675,774	1,566,165	32,249	640,101	1,007,457
	30 - 75	126	752,487	377,978	374,509	5,624	127,499	431,546
	76 dan lebih and above	22	408,255	227,076	181,179	3,730	106,840	140,800

Jadual 1.8: Perangkaan utama perkhidmatan persendirian dan lain-lain aktiviti mengikut saiz harta tetap, 2015

Table 1.8: Principal statistics of personal services and other activities by size of fixed assets, 2015

Saiz harta <i>Size of assets</i>		Bilangan pertubuhan <i>Number of establishments</i>	Nilai output kasar <i>Value of gross output</i>	Nilai input perantaraan <i>Value of intermediate input</i>	Nilai ditambah <i>Value added</i>	Bilangan pekerja pada bulan Disember gaji akhir <i>Number of persons engaged during December or the last pay period</i>	Gaji & upah yang dibayar <i>Salaries & wages paid</i>	Nilai harta tetap yang dimiliki pada akhir tahun <i>Value of fixed assets owned as at the end of the year</i>	
(RM '000)			(RM '000)	(RM '000)	(RM '000)		(RM '000)	(RM '000)	
Jumlah/ Total		45,384	8,052,877	4,174,913	3,877,964	113,624	1,518,298	3,573,942	
50	Kurang daripada <i>Less than</i>	50	32,661	3,065,575	1,538,562	1,527,013	67,154	633,544	417,183
	50 - < 100	8,448	1,039,633	539,394	500,239	16,806	214,718	586,237	
	100 - < 200	2,227	1,006,750	497,922	508,828	10,431	194,349	298,248	
	200 - < 500	1,300	905,693	482,220	423,472	7,939	174,804	394,201	
	500 - < 1,000	407	590,549	321,151	269,397	4,182	101,781	275,870	
	1,000 - < 5,000	261	807,775	453,034	354,741	4,986	132,256	526,443	
	5,000 - < 10,000	58	258,034	143,088	114,947	1,258	41,652	388,006	
	10,000 - < 50,000	19	125,791	67,895	57,896	449	15,151	355,448	
50,000 <i>dan lebih and above</i>	3	253,078	131,647	121,430	419	10,045	332,307		

Jadual 1.9: Bilangan pekerja perkhidmatan persendirian dan lain-lain aktiviti mengikut aktiviti, 2015

Table 1.9: Number of persons engaged in the personal services and other activities by activities, 2015

Aktiviti <i>Activities</i>	Bilangan pertubuhan <i>Number of establishments</i>	Bilangan pekerja pada bulan Disember atau pada tempoh gaji akhir <i>Number of persons engaged during December or the last pay period</i>			
		Jumlah <i>Total</i>	Pemilik yang bekerja, rakan niaga yang aktif dan pekerja keluarga tidak bergaji <i>Working proprietors, active business partners and unpaid family workers</i>	Pekerja sepenuh masa <i>Full-time employees</i>	Pekerja sambilan <i>Part-time employees</i>
Jumlah/ Total	45,384	113,624	34,297	74,503	4,824
Aktiviti keahlian organisasi <i>Activities of membership organisations</i>	20,782	7,117	-	5,454	1,663
Pembaikan komputer dan barangan persendirian & isi rumah <i>Repair of computers and personal & household goods</i>	4,698	21,292	5,623	15,235	434
Aktiviti perkhidmatan persendirian lain <i>Other personal service activities</i>	19,904	85,215	28,674	53,814	2,727

Jadual 1.10: Bilangan pekerja dan gaji & upah perkhidmatan persendirian dan lain-lain aktiviti mengikut kategori pekerja, 2015
Table 1.10: Number of person engaged and salaries & wages of personal services and other activities by category of workers, 2015

Kategori pekerja <i>Category of workers</i>	Bilangan pekerja pada bulan Disember atau pada tempoh gaji akhir <i>Total number of persons engaged during December or the last pay period</i>			Gaji & upah yang dibayar <i>Salaries & wages paid</i> (RM '000)
	Jumlah <i>Total</i>	Lelaki <i>Male</i>	Perempuan <i>Female</i>	
Jumlah/ Total	113,624	52,860	60,764	1,518,298
Jumlah pemilik yang bekerja dan pekerja keluarga tidak bergaji <i>Total working proprietors and unpaid family workers</i>	34,297	18,732	15,565	-
Pemilik yang bekerja dan rakan niaga yang aktif <i>Working proprietors and active business partners</i>	21,226	10,266	10,960	-
Pekerja keluarga tidak bergaji (semua ahli keluarga dan rakan yang tidak menerima upah yang tetap) <i>Unpaid family workers (all members of family and friends not receiving regular wages)</i>	13,071	8,466	4,605	-
Jumlah pekerja bergaji (sepenuh masa) <i>Total paid employees (full-time)</i>	74,503	32,078	42,425	1,474,803
Pengurus <i>Managers</i>	8,203	4,380	3,823	299,370
Profesional <i>Professionals</i>	3,613	2,172	1,441	114,953
Profesional <i>Professionals</i>	3,571	2,142	1,429	113,753
Penyelidik <i>Researchers</i>	42	30	12	1,201
Juruteknik dan profesional bersekutu <i>Technicians and associate professionals</i>	3,531	2,701	830	92,252
Pekerja sokongan perkeranian <i>Clerical support workers</i>	7,744	1,919	5,825	133,884
Pekerja perkhidmatan dan jualan <i>Service and sales workers</i>	19,710	6,588	13,122	326,381
Pekerja kemahiran dan pekerja pertukangan yang berkaitan <i>Craft and related trade workers</i>	9,994	4,601	5,393	184,828
Operator mesin, loji dan pemasang <i>Plant and machine operators and assemblers</i>	1,266	750	516	22,128
Pekerja asas <i>Elementary occupation</i>	20,442	8,967	11,475	301,006
Pekerja bergaji (sambilan)/ Paid employees (part-time)	4,824	2,050	2,774	43,495

Jadual 1.11: Bilangan pekerja perkhidmatan persendirian dan lain-lain aktiviti mengikut kewarganegaraan dan kategori pekerja, 2015
 Table 1.11: Number of persons engaged of personal services and other activities by citizenships and category of workers, 2015

Kategori pekerja <i>Category of workers</i>	Bilangan pekerja pada bulan Disember atau pada tempoh gaji terakhir <i>Number of persons engaged during December or the last pay period</i>		
	Jumlah <i>Total</i>	Warganegara <i>Citizen</i>	Bukan Warganegara <i>Non-citizen</i>
Jumlah/ Total	113,624	111,078	2,546
Jumlah pemilik yang bekerja dan pekerja keluarga tidak bergaji <i>Total working proprietors and unpaid family workers</i>	34,297	34,293	4
Pemilik yang bekerja dan rakan niaga yang aktif <i>Working proprietors and active business partners</i>	21,226	21,225	1
Pekerja keluarga tidak bergaji (semua ahli keluarga dan rakan yang tidak menerima upah yang tetap) <i>Unpaid family workers (all members of family and friends not receiving regular wages)</i>	13,071	13,068	3
Jumlah pekerja bergaji (sepenuh masa) <i>Total paid employees (full-time)</i>	74,503	72,070	2,433
Pengurus <i>Managers</i>	8,203	8,183	20
Profesional <i>Professionals</i>	3,613	3,602	11
Profesional <i>Professionals</i>	3,571	3,562	9
Penyelidik <i>Researchers</i>	42	40	2
Juruteknik dan profesional bersekutu <i>Technicians and associate professionals</i>	3,531	3,485	46
Pekerja sokongan perkeranian <i>Clerical support workers</i>	7,744	7,729	15
Pekerja perkhidmatan dan jualan <i>Service and sales workers</i>	19,710	18,920	790
Pekerja kemahiran dan pekerja pertukangan yang berkaitan <i>Craft and related trade workers</i>	9,994	9,657	337
Operator mesin, loji dan pemasang <i>Plant and machine operators and assemblers</i>	1,266	1,142	124
Pekerja asas <i>Elementary occupation</i>	20,442	19,352	1,090
Pekerja bergaji (sambilan)/ Paid employees (part-time)	4,824	4,715	109

Jadual 1.12: Bilangan pekerja bergaji sepenuh masa perkhidmatan persendirian dan lain-lain aktiviti mengikut kategori kemahiran pekerja dan aktiviti, 2015

Table 1.12: Number of full time paid employees of personal services and other activities by category of skilled workers and activities, 2015

Aktiviti <i>Activities</i>	Mahir/ High-Skilled*		Separa Mahir/ Semi-Skilled**		Kurang Mahir/ Low-Skilled***	
	Bilangan pekerja pada bulan Disember atau pada tempoh gaji akhir <i>Number of persons engaged during December or the last pay period</i>	Gaji & upah yang dibayar <i>Salaries & wages paid</i> (RM '000)	Bilangan pekerja pada bulan Disember atau pada tempoh gaji akhir <i>Number of persons engaged during December or the last pay period</i>	Gaji & upah yang dibayar <i>Salaries & wages paid</i> (RM '000)	Bilangan pekerja pada bulan Disember atau pada tempoh gaji akhir <i>Number of persons engaged during December or the last pay period</i>	Gaji & upah yang dibayar <i>Salaries & wages paid</i> (RM '000)
Jumlah/ Total	15,347	506,576	38,714	667,222	20,442	301,006
Aktiviti keahlian organisasi <i>Activities of membership organisations</i>	277	15,112	2506	27,011	2671	26,054
Pembaikan komputer dan barangan persendirian & isi rumah <i>Repair of computers and personal & household goods</i>	5,376	176,474	7,157	138,290	2,702	39,959
Aktiviti perkhidmatan persendirian lain <i>Other personal service activities</i>	9,694	314,990	29,051	501,921	15,069	234,993

* Termasuk pengurus & profesional dan juruteknik & profesional bersekutu / Includes managers & professionals and technicians & associate professionals

** Termasuk pekerja sokongan perkeranian, pekerja perkhidmatan & jualan, pekerja kemahiran & pekerja pertukangan yang berkaitan dan operator mesin & loji dan pemasang
Includes clerical support workers, service & sale workers, craft & related trades workers and plant & machine operators & assemblers

*** Termasuk pekerjaan asas / Includes elementary occupations

Jadual 1.13: Bilangan pekerja perkhidmatan persendirian dan lain-lain aktiviti mengikut jantina dan kelulusan, 2015

Table 1.13: Number of persons engaged of personal services and other activities by sex and qualifications, 2015

Kelulusan <i>Qualifications</i>	Jumlah pekerja <i>Total employment</i>	Bilangan pekerja seperti pada Disember 2015 atau pada tempoh gaji terakhir <i>Number of persons engaged as at December 2015 or during the last pay period</i>	
		Lelaki <i>Male</i>	Perempuan <i>Female</i>
Jumlah/ Total	113,624	52,860	60,764
Pascasiswazah <i>Postgraduate</i>	807	493	314
Ijazah sarjana muda/ Diploma lanjutan atau yang setaraf <i>Bachelor/ Advanced Diploma or equivalent</i>	14,042	8,949	5,093
Diploma <i>Diploma</i>	20,308	10,315	9,993
STPM atau yang setaraf <i>STPM or equivalent</i>	5,467	2,199	3,268
Sijil <i>Certificate</i>	22,707	11,086	11,621
SPM/ SPM (V) atau yang setaraf <i>SPM/ SPM (V) or equivalent</i>	39,214	15,009	24,205
Di bawah taraf kelulusan SPM/ SPM (V) <i>Below SPM/ SPM (V) qualification</i>	11,079	4,809	6,270

Jadual 1.14: Bilangan pekerja perkhidmatan persendirian dan lain-lain aktiviti mengikut kelulusan dan aktiviti, 2015

Table 1.14: Number of persons engaged of personal services and other activities by qualifications and activities, 2015

Aktiviti <i>Activities</i>	Pascasiswazah/ <i>Postgraduate</i>	Ijazah sarjana muda/ Diploma lanjutan atau yang setaraf <i>Bachelor/ Advanced Diploma or equivalent (Academic)</i>	Diploma <i>Diploma</i>	STPM atau yang setaraf <i>STPM or equivalent</i>	Sijil <i>Certificate</i>	SPM/ SPM (V) atau yang setaraf <i>SPM/ SPM (V) or equivalent</i>	Di bawah taraf kelulusan SPM/ SPM (V) <i>Below SPM/ SPM (V) qualification</i>
Jumlah/ Total	807	14,042	20,308	5,467	22,707	39,214	11,079
Aktiviti keahlian organisasi <i>Activities of membership organisations</i>	213	887	1020	559	794	2,976	668
Pembaikan komputer dan barangan persendirian & isi rumah <i>Repair of computers and personal & household goods</i>	152	2,983	3,938	1,225	3,977	7,451	1,566
Aktiviti perkhidmatan persendirian lain <i>Other personal service activities</i>	442	10,172	15,350	3,683	17,936	28,787	8,845

Jadual 1.15: Nilai harta tetap perkhidmatan persendirian dan lain-lain aktiviti mengikut aktiviti, 2015

Table 1.15: Value of fixed assets of personal services and other activities by activities, 2015

Aktiviti <i>Activities</i>	Nilai buku bersih seperti pada 01.01.2015 <i>Net book value</i> <i>as at 01.01.2015</i>	Perbelanjaan modal <i>Capital</i> <i>expenditure</i>	Pelupusan <i>Disposal</i>	Susut nilai semasa <i>Current</i> <i>depreciation</i>	Nilai buku bersih seperti pada 31.12.2015 <i>Net book value</i> <i>as at 31.12.2015</i>	Sewa yang dibayar dalam tahun 2015 <i>Rent paid during</i> <i>2015</i>
	(RM '000)	(RM '000)	(RM '000)	(RM '000)	(RM '000)	(RM '000)
Jumlah/ Total	3,736,423	111,973	5,335	294,162	3,573,942	431,660
Aktiviti keahlian organisasi <i>Activities of membership organisations</i>	1,461,393	30,099	1,670	47,035	1,444,612	27,919
Pembaikan komputer dan barangan persendirian & isi rumah <i>Repair of computers and personal & household goods</i>	377,628	18,941	635	47,824	368,275	70,284
Aktiviti perkhidmatan persendirian lain <i>Other personal service activities</i>	1,897,402	62,933	3,030	199,303	1,761,055	333,457

Jadual 1.16: Nilai harta tetap perkhidmatan persendirian dan lain-lain aktiviti mengikut jenis harta, 2015

Table 1.16: Value of fixed assets of personal services and other activities by type of assets, 2015

Jenis harta <i>Type of assets</i>	Nilai buku bersih seperti pada 01.01.2015 <i>Net book value as at 01.01.2015</i>	Perbelanjaan modal <i>Capital expenditure</i>	Pelupusan <i>Disposal</i>	Susut nilai semasa <i>Current depreciation</i>	Nilai buku bersih seperti pada 31.12.2015 <i>Net book value as at 31.12.2015</i>	Sewa yang dibayar dalam tahun 2015 <i>Rent paid during 2015</i>
	(RM '000)	(RM '000)	(RM '000)	(RM '000)	(RM '000)	(RM '000)
Jumlah/ Total	3,736,423	111,973	5,335	294,162	3,573,942	431,660
Tanah <i>Land</i>	482,209	11,498	470	1,658	491,698	3,693
Bangunan dan binaan lain <i>Buildings and other construction</i>	1,180,195	22,150	1,100	27,615	1,174,370	424,713
Alat pengangkutan <i>Transport equipment</i>	219,969	32,133	713	35,868	215,455	402
Teknologi Maklumat dan Telekomunikasi <i>Information and Communications Technology</i>	148,506	5,390	258	21,503	132,165	51
Jentera dan kelengkapan <i>Machinery and equipment</i>	822,100	18,103	1,085	121,979	716,971	2,442
Perabot dan pemasangan <i>Furniture and fittings</i>	817,419	13,180	544	77,775	752,300	207
Harta lain <i>Other assets</i>	66,025	9,519	1,165	7,764	90,983	152

Jadual 1.17: Perangkaan utama pertubuhan milikan wanita perkhidmatan persendirian dan lain-lain aktiviti mengikut aktiviti, 2015

Table 1.17: Principal statistics of women-owned establishment in personal services and other activities by activities, 2015

Aktiviti <i>Activities</i>	Bilangan pertubuhan <i>Number of establishments</i>	Nilai output kasar <i>Value of gross output</i>	Nilai input perantaraan <i>Value of Intermediate input</i>	Nilai ditambah <i>Value added</i>	Bilangan pekerja pada bulan Disember atau pada tempoh gaji akhir <i>Number of persons engaged during December or the last pay period</i>	Gaji & upah yang dibayar <i>Salaries & wages paid</i>	Nilai harta tetap yang dimiliki pada akhir tahun <i>Value of fixed assets owned as at the end of the year</i>
		(RM '000)	(RM '000)	(RM '000)		(RM '000)	(RM '000)
Jumlah/ Total	12,899	2,828,142	1,404,410	1,423,732	55,186	613,734	753,801
Pembaikan komputer dan barangan persendirian & isi rumah <i>Repair of computers and personal & household goods</i>	376	251,235	127,296	123,939	2,004	38,407	40,382
Aktiviti perkhidmatan persendirian lain <i>Other personal service activities</i>	12,523	2,576,907	1,277,114	1,299,793	53,182	575,327	713,419

Jadual 1.18: Perangkaan utama pertubuhan milikan wanita perkhidmatan persendirian dan lain-lain aktiviti mengikut negeri , 2015

Table 1.18: Principal statistics of women-owned establishment of personal services and other activities by states, 2015

Negeri States	Bilangan pertubuhan <i>Number of establishments</i>	Nilai output kasar <i>Value of gross output</i>	Nilai input perantaraan <i>Value of Intermediate input</i>	Nilai ditambah <i>Value added</i>	Bilangan pekerja pada bulan Disember atau pada tempoh gaji akhir <i>Number of persons engaged during December or the last pay period</i>	Gaji & upah yang dibayar <i>Salaries & wages paid</i>	Nilai harta tetap yang dimiliki pada akhir tahun <i>Value of fixed assets owned as at the end of the year</i>
		(RM '000)	(RM '000)	(RM '000)		(RM '000)	(RM '000)
Jumlah/ Total	12,899	2,828,142	1,404,410	1,423,732	55,186	613,734	753,801
Johor	1,688	315,120	155,189	159,931	7,453	81,313	64,200
Kedah	567	62,936	30,699	32,236	1,916	12,859	17,682
Kelantan	348	25,780	12,105	13,674	1,039	4,467	7,405
Melaka	455	67,511	29,637	37,874	1,660	15,076	16,056
Negeri Sembilan	491	51,144	23,553	27,590	1,696	12,302	7,613
Pahang	450	51,980	25,472	26,508	1,499	10,076	13,381
Perak	1,171	127,089	60,165	66,924	4,071	27,094	32,994
Perlis	80	11,286	5,809	5,477	223	570	3,656
Pulau Pinang	1,173	222,143	76,582	145,561	5,417	51,882	57,692
Sabah	784	117,366	51,127	66,240	3,255	24,874	33,963
Sarawak	620	116,151	52,772	63,379	2,933	32,774	34,962
Selangor	2,672	820,479	433,562	386,916	12,215	150,621	191,551
Terengganu	192	13,506	6,552	6,954	600	2,884	2,920
W.P Kuala Lumpur	2,150	810,929	433,435	377,494	10,926	184,015	265,588
W.P Labuan	37	8,979	4,618	4,360	192	1,726	1,571
W.P Putrajaya	21	5,746	3,131	2,615	91	1,200	2,567

Jadual 2.1: Perangkaan utama aktiviti keahlian organisasi, 2010 dan 2015
Table 2.1: Principal statistics of activities of membership organisations, 2010 and 2015

Tahun <i>Year</i>	Bilangan pertubuhan <i>Number of establishments</i>	Nilai output kasar <i>Value of gross output</i>	Nilai input perantaraan <i>Value of intermediate input</i>	Nilai ditambah <i>Value added</i>	Bilangan pekerja pada bulan Disember atau pada tempoh gaji akhir <i>Number of persons engaged during December or the last pay period</i>	Gaji & upah yang dibayar <i>Salaries & wages paid</i>	Nilai harta tetap yang dimiliki pada akhir tahun <i>Value of fixed assets owned as at the end of the year</i>
		(RM '000)	(RM '000)	(RM '000)		(RM '000)	(RM '000)
2015	20,782	911,697	595,264	316,433	7,117	78,467	1,444,612
2010	9,623	304,763	236,042	68,721	5,187	53,201	319,913

Jadual 2.2: Perangkaan utama aktiviti keahlian organisasi mengikut aktiviti, 2015
Table 2.2: Principal statistics of activities of membership organisations by activities, 2015

Aktiviti <i>Activities</i>	Bilangan pertubuhan <i>Number of establishments</i>	Nilai output kasar <i>Value of gross output</i>	Nilai input perantaraan <i>Value of intermediate input</i>	Nilai ditambah <i>Value added</i>	Bilangan pekerja pada bulan Disember atau pada tempoh gaji akhir <i>Number of persons engaged during December or the last pay period</i>	Gaji & upah yang dibayar <i>Salaries & wages paid</i>	Nilai harta tetap yang dimiliki pada akhir tahun <i>Value of fixed assets owned as at the end of the year</i>
		(RM '000)	(RM '000)	(RM '000)		(RM '000)	(RM '000)
Jumlah/ Total	20,782	911,697	595,264	316,433	7,117	78,467	1,444,612
Aktiviti keahlian organisasi perniagaan, majikan dan profesional <i>Activities of business, employes and professional membership organisations</i>	833	60,752	37,580	23,172	685	8,888	135,687
Aktiviti kesatuan buruh <i>Activities of trade unions</i>	423	22,870	13,504	9,367	450	5,275	17,647
Aktiviti keahlian organisasi lain <i>Activities of other membership organisations</i>	19,526	828,075	544,180	283,894	5,982	64,304	1,291,278

Jadual 2.3: Perangkaan utama aktiviti keahlian organisasi mengikut negeri, 2015

Table 2.3: Principal statistics of activities of membership organisations by states, 2015

Negeri <i>States</i>	Bilangan pertubuhan <i>Number of establishments</i>	Nilai output kasar <i>Value of gross output</i>	Nilai input perantara <i>Value of intermediate input</i>	Nilai ditambah <i>Value added</i>	Bilangan pekerja pada bulan Disember atau pada tempoh gaji akhir <i>Number of persons engaged during December or the last pay period</i>	Gaji & upah yang dibayar <i>Salaries & wages paid</i>	Nilai harta tetap yang dimiliki pada akhir tahun <i>Value of fixed assets owned as at the end of the year</i>
		(RM '000)	(RM '000)	(RM '000)		(RM '000)	(RM '000)
Jumlah/ Total	20,782	911,697	595,264	316,433	7,117	78,467	1,444,612
Johor	1,898	102,179	61,277	40,902	486	5,517	149,594
Kedah	1,005	39,839	25,703	14,136	294	2,442	70,057
Kelantan	1,005	35,502	22,099	13,404	98	1,093	77,251
Melaka	503	15,209	10,457	4,753	137	1,853	60,344
Negeri Sembilan	597	15,082	10,242	4,840	62	743	40,593
Pahang	1,151	39,337	25,334	14,004	384	2,993	216,672
Perak	1,621	53,176	35,841	17,335	476	4,907	106,456
Perlis	174	3,454	2,402	1,052	26	289	2,392
Pulau Pinang	2,889	95,758	62,411	33,348	978	7,312	113,563
Sabah	1,772	57,523	35,058	22,465	506	3,680	113,824
Sarawak	2,350	86,816	60,183	26,633	540	6,924	182,064
Selangor	3,747	158,497	113,493	45,002	1,069	14,307	127,396
Terengganu	690	22,732	14,223	8,508	26	249	20,937
W.P Kuala Lumpur	1,275	180,704	112,992	67,712	1,948	25,186	161,224
W.P Putrajaya/ Labuan	105	5,889	3,549	2,339	87	972	2,245

Jadual 2.4: Perangkaan utama aktiviti keahlian organisasi mengikut taraf sah, 2015
Table 2.4: Principal statistics of activities of membership organisations by legal status, 2015

Taraf sah <i>Legal status</i>	Bilangan pertubuhan <i>Number of establishments</i>	Nilai output kasar <i>Value of gross output</i>	Nilai input perantaraan <i>Value of intermediate input</i>	Nilai ditambah <i>Value added</i>	Bilangan pekerja pada bulan Disember atau pada tempoh gaji akhir <i>Number of persons engaged during December or the last pay period</i>	Gaji & upah yang dibayar <i>Salaries & wages paid</i>	Nilai harta tetap yang dimiliki pada akhir tahun <i>Value of fixed assets owned as at the end of the year</i>
		(RM '000)	(RM '000)	(RM '000)		(RM '000)	(RM '000)
Jumlah/ Total	20,782	911,697	595,264	316,433	7,117	78,467	1,444,612
Syarikat koperasi <i>Co-operative</i>	16	5,765	4,572	1,193	31	731	2,041
Pertubuhan persendirian yang tidak mencari keuntungan <i>Private non-profit making organisations</i>	20,766	905,932	590,692	315,240	7,086	77,736	1,442,571

Jadual 2.5: Perangkaan utama aktiviti keahlian organisasi mengikut hak milik, 2015
Table 2.5: Principal statistics of activities of membership organisations by ownership, 2015

Hak milik <i>Ownership</i>	Bilangan pertubuhan <i>Number of establishments</i>	Nilai output kasar <i>Value of gross output</i>	Nilai input perantaraan <i>Value of intermediate input</i>	Nilai ditambah <i>Value added</i>	Bilangan pekerja pada bulan Disember atau pada tempoh gaji akhir <i>Number of persons engaged during December or the last pay period</i>	Gaji & upah yang dibayar <i>Salaries & wages paid</i>	Nilai harta tetap yang dimiliki pada akhir tahun <i>Value of fixed assets owned as at the end of the year</i>
		(RM '000)	(RM '000)	(RM '000)		(RM '000)	(RM '000)
Jumlah/ Total	20,782	911,697	595,264	316,433	7,117	78,467	1,444,718
Residen Malaysia <i>Malaysian residents</i>	20,782	911,697	595,264	316,433	7,117	78,467	1,444,612

Jadual 2.6: Bilangan pekerja dan gaji & upah aktiviti keahlian organisasi mengikut kategori pekerja, 2015
 Table 2.6: Number of person engaged and salaries & wages of activities of membership organisations by category of workers, 2015

Kategori pekerja <i>Category of workers</i>	Bilangan pekerja pada bulan Disember atau pada tempoh gaji akhir <i>Number of persons engaged during December or the last pay period</i>			Gaji & upah yang dibayar <i>Salaries & wages paid (RM '000)</i>
	Jumlah <i>Total</i>	Lelaki <i>Male</i>	Perempuan <i>Female</i>	
Jumlah / Total	7,117	4,516	2,601	78,467
Jumlah pemilik yang bekerja dan pekerja keluarga tidak bergaji <i>Total working proprietors and unpaid family workers</i>	-	-	-	-
Pemilik yang bekerja dan rakan niaga yang aktif <i>Working proprietors and active business partners</i>	-	-	-	-
Pekerja keluarga tidak bergaji (semua ahli keluarga dan rakan yang tidak menerima upah yang tetap) <i>Unpaid family workers (all members of family and friends not receiving regular wages)</i>	-	-	-	-
Jumlah pekerja bergaji (sepenuh masa) <i>Total paid employees (full-time)</i>	5,454	3,618	1,836	67,799
Pengurus <i>Manager</i>	142	86	56	12,429
Profesional <i>Professionals</i>	25	11	14	378
Profesional <i>Professionals</i>	25	11	14	378
Penyelidik <i>Researchers</i>	-	-	-	-
Juruteknik dan profesional bersekutu <i>Technicians and associate professionals</i>	110	86	24	2,305
Pekerja sokongan perkeranian <i>Clerical support workers</i>	2,134	1,092	1,042	21,803
Pekerja perkhidmatan dan jualan <i>Service and sales workers</i>	296	195	101	4,195
Pekerja kemahiran dan pekerja pertukangan yang berkaitan <i>Craft and related trades workers</i>	76	56	20	1,013
Operator mesin, loji dan pemasang <i>Plant and machine operators and assemblers</i>	-	-	-	-
Pekerja asas <i>Elementary workers</i>	2,671	2,092	579	26,054
Pekerja bergaji (sambilan) <i>Paid employees (part-time)</i>	1,663	898	765	10,290

Jadual 2.7: Bilangan pekerja aktiviti keahlian organisasi mengikut aktiviti, 2015
 Table 2.7: Number of persons engaged of activities of membership organisations by activities, 2015

Aktiviti <i>Activities</i>	Bilangan pertubuhan <i>Number of establishments</i>	Jumlah pekerja pada bulan Disember atau pada tempoh gaji akhir <i>Total number of persons engaged during December or the last pay period</i>		
		Jumlah <i>Total</i>	Pekerja sepenuh masa <i>Full-time employees</i>	Pekerja sambilan <i>Part-time employees</i>
Jumlah/ Total	20,782	7,117	5,454	1,663
Aktiviti keahlian organisasi perniagaan, majikan dan profesional <i>Activities of business, employes and profesional membership organisations</i>	833	685	556	129
Aktiviti kesatuan buruh <i>Activities of trade unions</i>	423	450	263	187
Aktiviti keahlian organisasi lain <i>Activities of other membership organisations</i>	19,526	5,982	4,635	1,347

Jadual 3.1: Perangkaan utama aktiviti pembaikan komputer dan barangan persendirian & isi rumah, 2010 dan 2015

Table 3.1: Principal statistics of repair of computers and personal and household goods, 2010 and 2015

Tahun <i>Year</i>	Bilangan pertubuhan <i>Number of establishments</i>	Nilai output kasar <i>Value of gross output</i>	Nilai input perantaraan <i>Value of intermediate input</i>	Nilai ditambah <i>Value added</i>	Bilangan pekerja pada bulan Disember atau pada tempoh gaji akhir <i>Number of persons engaged during December or the last pay period</i>	Gaji & upah yang dibayar <i>Salaries & wages paid</i>	Nilai harta tetap yang dimiliki pada akhir tahun <i>Value of fixed assets owned as at the end of the year</i>
		(RM '000)	(RM '000)	(RM '000)		(RM '000)	(RM '000)
2015	4,698	1,946,221	957,600	988,621	21,292	359,626	368,275
2010	4,197	830,098	447,614	382,484	12,837	127,642	138,267

Jadual 3.2: Perangkaan utama aktiviti pembaikan komputer dan barangan persendirian & isi rumah mengikut aktiviti, 2015

Table 3.2: Principal statistics of repair of computers and personal and household goods by activities, 2015

Aktiviti <i>Activities</i>	Bilangan pertubuhan <i>Number of establishments</i>	Nilai output kasar <i>Value of gross output</i>	Nilai input perantaraan <i>Value of intermediate input</i>	Nilai ditambah <i>Value added</i>	Bilangan pekerja pada bulan Disember atau pada tempoh gaji akhir <i>Number of persons engaged during December or the last pay period</i>	Gaji & upah yang dibayar <i>Salaries & wages paid</i>	Nilai harta tetap yang dimiliki pada akhir tahun <i>Value of fixed assets owned as at the end of the year</i>
		(RM '000)	(RM '000)	(RM '000)		(RM '000)	(RM '000)
Jumlah/ Total	4,698	1,946,221	957,600	988,621	21,292	359,626	368,275
Pembaikan komputer dan peralatan komunikasi <i>Repair of computers and communication equipment</i>	2,001	983,421	489,616	493,805	9,858	181,815	188,165
Pembaikan barangan persendirian dan isi rumah <i>Repair of personal and household goods</i>	2,697	962,800	467,984	494,816	11,434	177,811	180,110

Jadual 3.3: Perangkaan utama aktiviti pembaikan komputer dan barangan persendirian & isi rumah mengikut negeri, 2015

Table 3.3: Principal statistics of repair of computers and personal & household goods by states, 2015

Negeri States	Bilangan pertubuhan <i>Number of establishments</i>	Nilai output kasar <i>Value of gross output</i>	Nilai input perantaraan <i>Value of intermediate input</i>	Nilai ditambah <i>Value added</i>	Bilangan pekerja pada bulan Disember atau pada tempoh gaji akhir <i>Number of persons engaged during December or the last pay period</i>	Gaji & upah yang dibayar <i>Salaries & wages paid</i>	Nilai harta tetap yang dimiliki pada akhir tahun <i>Value of fixed assets owned as at the end of the year</i>
		(RM '000)	(RM '000)	(RM '000)		(RM '000)	(RM '000)
Jumlah/ Total	4,698	1,946,221	957,600	988,621	21,292	359,626	368,275
Johor	661	225,817	109,601	116,217	2,939	46,566	40,964
Kedah	251	34,597	17,349	17,248	629	4,881	6,458
Kelantan	371	37,650	18,190	19,460	993	6,422	5,142
Melaka	203	44,434	20,899	23,535	603	7,253	7,346
Negeri Sembilan	171	40,742	19,011	21,731	553	6,851	5,046
Pahang	167	31,534	14,625	16,909	528	5,456	5,056
Perak	605	249,406	108,703	140,703	2,614	38,728	39,123
Perlis	395	67,936	31,468	36,468	1,109	12,637	12,735
Pulau Pinang	30	5,837	3,085	2,751	96	825	1,250
Sabah	775	596,523	303,040	293,483	5,162	102,057	102,031
Sarawak	131	18,527	8,470	10,057	422	3,728	5,007
Selangor	130	64,895	29,818	35,077	691	8,917	12,943
Terengganu	243	71,680	34,221	37,460	991	13,780	10,231
W.P Kuala Lumpur	550	447,105	234,584	212,520	3,866	100,239	113,943
W.P Putrajaya /Labuan	15	9,538	4,536	5,002	96	1,286	1,000

Jadual 3.4: Perangkaan utama aktiviti pembaikan komputer dan barangan persendirian & isi rumah mengikut taraf sah, 2015

Table 3.4: Principal statistics of repair of computers and personal & household goods by legal status, 2015

Taraf sah <i>Legal status</i>	Bilangan pertubuhan <i>Number of establishments</i>	Nilai output kasar <i>Value of gross output</i>	Nilai input perantara <i>Value of intermediate input</i>	Nilai ditambah <i>Value added</i>	Bilangan pekerja pada bulan Disember atau pada tempoh gaji akhir <i>Number of persons engaged during December or the last pay period</i>	Gaji & upah yang dibayar <i>Salaries & wages paid</i>	Nilai harta tetap yang dimiliki pada akhir tahun <i>Value of fixed assets owned as at the end of the year</i>
		(RM '000)	(RM '000)	(RM '000)		(RM '000)	(RM '000)
Jumlah/ Total	4,698	1,946,221	957,600	988,621	21,292	359,626	368,275
Hak milik perseorangan <i>Individual proprietorship</i>	3,756	735,994	346,542	389,452	12,346	136,299	126,026
Perkongsian <i>Partnership</i>	263	107,058	51,383	55,676	1,583	19,585	12,805
Syarikat sendirian berhad <i>Private limited company</i>	679	1,103,169	559,675	543,493	7,363	203,742	229,444

Jadual 3.5: Perangkaan utama aktiviti pembaikan komputer dan barangan persendirian & isi rumah mengikut hak milik, 2015

Table 3.5: Principal statistics of repair of computers and personal & household goods by ownerships, 2015

Hak milik <i>Ownership</i>	Bilangan pertubuhan <i>Number of establishments</i>	Nilai output kasar <i>Value of gross output</i>	Nilai input perantaraan <i>Value of intermediate input</i>	Nilai ditambah <i>Value added</i>	Bilangan pekerja pada bulan Disember atau pada tempoh gaji akhir <i>Number of persons engaged during December or the last pay period</i>	Gaji & upah yang dibayar <i>Salaries & wages paid</i>	Nilai harta tetap yang dimiliki pada akhir tahun <i>Value of fixed assets owned as at the end of the year</i>
		(RM '000)	(RM '000)	(RM '000)		(RM '000)	(RM '000)
Jumlah/ Total	4,698	1,946,221	957,600	988,621	21,292	359,626	368,275
Residen Malaysia <i>Malaysian residents</i>	4,695	1,932,516	949,622	982,894	21,244	357,917	366,058
Bukan residen Malaysia <i>Non-Malaysian residents</i>	3	13,705	7,978	5,727	48	1,709	2,217

Jadual 3.6: Bilangan pekerja dan gaji & upah bagi aktiviti pembaikan komputer dan barangan persendirian & isi rumah mengikut kategori pekerja, 2015

Table 3.6: Number of person and salaries & wages in the repair of computers and personal & household goods by category of workers, 2015

Kategori pekerja <i>Category of workers</i>	Bilangan pekerja pada bulan Disember atau pada tempoh gaji akhir <i>Number of persons engaged during December or the last pay period</i>			Gaji & upah yang dibayar <i>Salaries & wages paid</i> (RM '000)
	Jumlah <i>Total</i>	Lelaki <i>Male</i>	Perempuan <i>Female</i>	
Jumlah / Total	21,292	16,567	4,725	359,626
Jumlah pemilik yang bekerja dan pekerja keluarga tidak bergaji <i>Total working proprietors and unpaid family workers</i>	5,623	4,935	688	-
Pemilik yang bekerja dan rakan niaga yang aktif <i>Working proprietors and active business partners</i>	4,308	3,942	366	-
Pekerja keluarga tidak bergaji (semua ahli keluarga dan rakan yang tidak menerima upah yang tetap) <i>Unpaid family workers (all members of family and friends not receiving regular wages)</i>	1,315	993	322	-
Jumlah pekerja bergaji (sepenuh masa) <i>Total paid employees (full-time)</i>	15,235	11,275	3,960	354,722
Pengurus <i>Manager</i>	1,741	1,382	359	71,070
Profesional <i>Professionals</i>	3,635	3,275	360	43,179
Profesional <i>Professionals</i>	1,262	1,073	189	42,123
Penyelidik <i>Researchers</i>	38	28	10	1,056
Juruteknik dan profesional bersekutu <i>Technicians and associate professionals</i>	2,335	2,174	161	62,224
Pekerja sokongan perkeranian <i>Clerical support workers</i>	2,320	296	2,024	44,912
Pekerja perkhidmatan dan jualan <i>Service and sales workers</i>	1,414	918	496	27,780
Pekerja kemahiran dan pekerja pertukangan yang berkaitan <i>Craft and related trades workers</i>	2,862	2,779	83	56,076
Operator mesin, loji dan pemasang <i>Plant and machine operators and assemblers</i>	561	472	89	9,522
Pekerja asas <i>Elementary workers</i>	2,702	2,153	549	39,959
Pekerja bergaji (sambilan) <i>Paid employees (part-time)</i>	434	357	77	4,904

Jadual 3.7: Bilangan pekerja aktiviti pembaikan komputer dan barangan persendirian & isi rumah mengikut aktiviti, 2015

Table 3.7: Number of persons engaged of repair of computers and personal & household goods by activities, 2015

Aktiviti <i>Activities</i>	Bilangan pertubuhan <i>Number of establishments</i>	Jumlah pekerja pada bulan Disember atau pada tempoh gaji akhir <i>Total number of persons engaged during December or the last pay period</i>			
		Jumlah <i>Total</i>	Pemilik yang bekerja, rakan niaga yang aktif dan pekerja keluarga tidak bergaji <i>Working proprietors, active business partners and unpaid family workers</i>	Pekerja sepenuh masa <i>Full-time employees</i>	Pekerja sambilan <i>Part-time employees</i>
Jumlah/ Total	4,698	21,292	5,623	15,235	434
Pembaikan komputer dan peralatan komunikasi <i>Repair of computer and communication equipment</i>	2,001	9,858	2,344	7,314	200
Pembaikan barangan persendirian dan isirumah <i>Repair of personal and household goods</i>	2,697	11,434	3,279	7,921	234

Jadual 4.1: Perangkaan utama aktiviti perkhidmatan lain, 2010 dan 2015

Table 4.1: Principal statistics of other service activities, 2010 and 2015

Tahun <i>Year</i>	Bilangan pertubuhan <i>Number of establishments</i>	Nilai output kasar <i>Value of gross output</i>	Nilai input perantaraan <i>Value of intermediate input</i>	Nilai ditambah <i>Value added</i>	Bilangan pekerja pada bulan Disember atau pada tempoh gaji akhir <i>Number of persons engaged during December or the last pay period</i>	Gaji & upah yang dibayar <i>Salaries & wages paid</i>	Nilai harta tetap yang dimiliki pada akhir tahun <i>Value of fixed assets owned as at the end of the year</i>
		(RM '000)	(RM '000)	(RM '000)		(RM '000)	(RM '000)
2015	19,904	5,194,959	2,622,049	2,572,910	85,215	1,080,205	1,761,056
2010	22,909	3,616,746	156,893	206,853	77,466	769,754	1,734,739

Jadual 4.2: Perangkaan utama aktiviti perkhidmatan lain mengikut aktiviti, 2015

Table 4.2: Principal statistics of other service activities by activities, 2015

Aktiviti <i>Activities</i>	Bilangan pertubuhan <i>Number of establishments</i>	Nilai output kasar <i>Value of gross output</i>	Nilai input perantara <i>Value of intermediate input</i>	Nilai ditambah <i>Value added</i>	Jumlah pekerja pada bulan Disember atau pada tempoh gaji akhir <i>Total number of persons engaged during December or the last pay period</i>	Gaji & upah yang dibayar <i>Salaries & wages paid</i>	Nilai harta tetap yang dimiliki pada akhir tahun <i>Value of fixed assets owned as at the end of the year</i>
		(RM '000)	(RM '000)	(RM '000)		(RM '000)	(RM '000)
Jumlah/ Total	19,904	5,194,959	2,622,049	2,572,910	85,215	1,080,205	1,761,056
Pencucian dan cucian kering pakaian dan produk berbulu <i>Washing and dry-cleaning of textiles and fur product</i>	2,296	661,343	346,433	314,910	10,162	125,412	301,938
Dandan rambut dan penjagaan kecantikan lain <i>Hairdressing and other beauty treatment</i>	14,653	3,131,487	1,576,867	1,554,620	58,217	675,857	823,658
Perkhidmatan pengurusan mayat dan aktiviti berkaitan <i>Funeral services and related activities</i>	124	405,629	212,431	193,198	1,187	33,994	336,860
Aktiviti perkhidmatan lain <i>Other services activities</i>	2,831	996,500	486,318	510,182	15,649	244,942	298,600

Jadual 4.3: Perangkaan utama aktiviti perkhidmatan lain mengikut negeri, 2015

Table 4.3: Principal statistics of other service activities by states, 2015

Negeri <i>States</i>	Bilangan pertubuhan <i>Number of establishments</i>	Nilai output kasar <i>Value of gross output</i>	Nilai input perantara <i>Value of intermediate input</i>	Nilai ditambah <i>Value added</i>	Bilangan pekerja pada bulan Disember atau pada tempoh gaji akhir <i>Number of persons engaged during December or the last pay period</i>	Gaji & upah yang dibayar <i>Salaries & wages paid</i>	Nilai harta tetap yang dimiliki pada akhir tahun <i>Value of fixed assets owned as at the end of the year</i>
		(RM '000)	(RM '000)	(RM '000)		(RM '000)	(RM '000)
Jumlah/ Total	19,904	5,194,959	2,622,049	2,572,910	85,215	1,080,205	1,761,056
Johor	2,899	569,244	283,072	286,172	12,652	160,419	148,673
Kedah	865	107,615	54,391	53,225	2,829	22,144	29,953
Kelantan	431	30,600	14,495	16,105	1,169	4,994	11,780
Melaka	718	126,981	59,447	67,533	2,687	28,577	38,687
Negeri Sembilan	720	91,390	45,110	46,280	2,440	21,837	22,656
Pahang	659	73,165	35,584	37,581	2,160	15,245	21,353
Perak	1,917	490,240	160,189	330,051	8,236	91,325	142,980
Perlis	1,899	221,558	103,581	117,977	6,474	53,103	65,986
Pulau Pinang	110	14,883	7,632	7,251	294	939	5,014
Sabah	4,028	1,380,736	749,381	631,355	17,485	230,247	430,927
Sarawak	271	20,105	9,691	10,414	806	4,364	4,669
Selangor	1,080	200,397	88,689	111,708	4,791	42,215	61,961
Terengganu	936	211,552	96,247	115,305	4,575	59,155	59,717
W.P Kuala Lumpur	3,277	1,635,492	903,548	731,944	18,169	340,827	710,971
W.P Putrajaya/ Labuan	94	21,001	10,992	10,009	448	4,814	5,729

Jadual 4.4: Perangkaan utama aktiviti perkhidmatan lain mengikut taraf sah, 2015

Table 4.4: Principal statistics of other service activities by legal status, 2015

Taraf sah <i>Legal status</i>	Bilangan pertubuhan <i>Number of establishments</i>	Nilai output kasar <i>Value of gross output</i>	Nilai input perantaraan <i>Value of intermediate input</i>	Nilai ditambah <i>Value added</i>	Bilangan pekerja pada bulan Disember atau pada tempoh gaji akhir <i>Number of persons engaged during December or the last pay period</i>	Gaji & upah yang dibayar <i>Salaries & wages paid</i>	Nilai harta tetap yang dimiliki pada akhir tahun <i>Value of fixed assets owned as at the end of the year</i>
		(RM '000)	(RM '000)	(RM '000)		(RM '000)	(RM '000)
Jumlah/ Total	19,904	5,194,959	2,622,049	2,572,910	85,215	1,080,205	1,761,056
Hak milik perseorangan <i>Individual proprietorship</i>	15,413	2,048,550	959,396	1,089,153	54,690	473,175	511,605
Perkongsian <i>Partnership</i>	1,312	275,769	126,808	148,962	6,725	62,381	66,362
Syarikat sendirian berhad <i>Private limited company</i>	3,179	2,870,640	1,535,845	1,334,795	23,800	544,649	1,183,089

Jadual 4.5: Perangkaan utama aktiviti perkhidmatan lain mengikut hak milik, 2015

Table 4.5: Principal statistics of other service activities by ownership, 2015

Hak milik <i>Ownership</i>	Bilangan pertubuhan <i>Number of establishments</i>	Nilai output kasar <i>Value of gross output</i>	Nilai input perantara <i>Value of intermediate input</i>	Nilai ditambah <i>Value added</i>	Bilangan pekerja pada bulan Disember atau pada tempoh gaji akhir <i>Number of persons engaged during December or the last pay period</i>	Gaji & upah yang dibayar <i>Salaries & wages paid</i>	Nilai harta tetap yang dimiliki pada akhir tahun <i>Value of fixed assets owned as at the end of the year</i>
		(RM '000)	(RM '000)	(RM '000)		(RM '000)	(RM '000)
Jumlah/ Total	19,904	5,194,959	2,622,049	2,572,910	85,215	1,080,205	1,761,056
Residen Malaysia <i>Malaysian residents</i>	19,855	5,018,470	2,534,159	2,484,310	83,439	1,039,941	1,751,562
Bukan residen Malaysia <i>Non-Malaysian residents</i>	39	171,799	85,566	86,233	1,706	38,933	8,666
Milik Bersama <i>Collective ownership</i>	10	4,690	2,324	2,367	70	1,331	828

Jadual 4.6: Bilangan pekerja dan gaji & upah aktiviti perkhidmatan lain mengikut kategori pekerja, 2015
 Table 4.6: Number of person engaged and salaries & wages of other service activities by category of workers, 2015

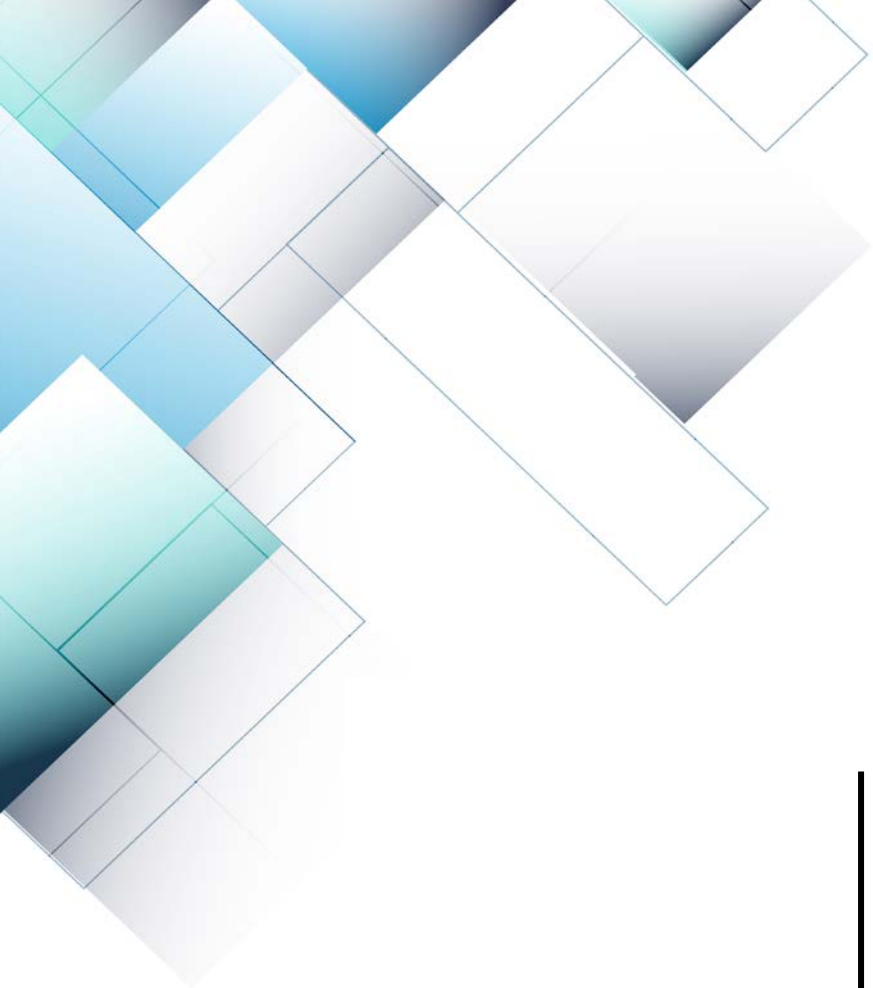
Kategori pekerja <i>Category of workers</i>	Bilangan pekerja pada bulan Disember atau pada tempoh gaji akhir <i>Number of persons engaged during December or the last pay period</i>			Gaji & upah yang dibayar <i>Salaries & wages paid</i> (RM '000)
	Jumlah <i>Total</i>	Lelaki <i>Male</i>	Perempuan <i>Female</i>	
Jumlah / Total	85,215	31,777	53,438	1,080,205
Jumlah pemilik yang bekerja dan pekerja keluarga tidak bergaji <i>Total working proprietors and unpaid family workers</i>	28,674	13,797	14,877	-
Pemilik yang bekerja dan rakan niaga yang aktif <i>Working proprietors and active business partners</i>	16,918	6324	10594	-
Pekerja keluarga tidak bergaji (semua ahli keluarga dan rakan yang tidak menerima upah yang tetap) <i>Unpaid family workers (all members of family and friends not receiving regular wages)</i>	11,756	7473	4283	-
Jumlah pekerja bergaji (sepenuh masa) <i>Total paid employees (full-time)</i>	53,814	17,185	36,629	1,051,904
Pengurus <i>Manager</i>	6,320	2912	3,408	215,872
Profesional <i>Professionals</i>	2,288	1,060	1,228	71,394
Profesional <i>Professionals</i>	2,284	1,058	1,226	71,250
Penyelidik <i>Researchers</i>	4	2	2	144
Juruteknik dan profesional bersekutu <i>Technicians and associate professionals</i>	1,086	441	645	27,723
Pekerja sokongan perkeranian <i>Clerical support workers</i>	3,290	531	2,759	67,170
Pekerja perkhidmatan dan jualan <i>Service and sales workers</i>	18,000	5,475	12,525	294,407
Pekerja kemahiran dan pekerja pertukangan yang berkaitan <i>Craft and related trades workers</i>	7,056	1,766	5,290	127,739
Operator mesin, loji dan pemasang <i>Plant and machine operators and assemblers</i>	705	278	427	12,606
Pekerja asas <i>Elementary workers</i>	15,069	4,722	10,347	234,993
Pekerja bergaji (sambilan) <i>Paid employees (part-time)</i>	2,727	795	1,932	28,301

Jadual 4.7: Bilangan pekerja aktiviti perkhidmatan lain mengikut aktiviti, 2015
 Table 4.7: Number of persons engaged of other services activities by activities, 2015

Aktiviti <i>Activities</i>	Bilangan pertubuhan <i>Number of establishments</i>	Jumlah pekerja pada bulan Disember atau pada tempoh gaji akhir <i>Total number of persons engaged during December or the last pay period</i>			
		Jumlah <i>Total</i>	Pemilik yang bekerja, rakan niaga yang aktif dan pekerja keluarga tidak bergaji <i>Working proprietors, active business partners and unpaid family workers</i>	Pekerja sepenuh masa <i>Full-time employees</i>	Pekerja sambilan <i>Part-time employees</i>
Jumlah/ Total	19,904	16,918	11,756	53,814	2,727
Pencucian dan cucian kering pakaian dan produk berbulu <i>Washing and dry-cleaning of textiles and fur product</i>	2,296	1,857	1,051	6,791	463
Dandanam rambut dan penjagaan kecantikan lain <i>Hairdressing and other beauty treatment</i>	14,653	12,999	9,335	34,219	1,664
Perkhidmatan pengurusan mayat dan aktiviti berkaitan <i>Funeral services and related activities</i>	124	78	19	984	106
Aktiviti perkhidmatan lain <i>Other services activities</i>	2,831	1,984	1,351	11,820	494

Muka surat ini sengaja dibiarkan kosong.

This page is deliberately left blank.



LAMPIRAN

APPENDIX

PIAWAIAN KLASIFIKASI INDUSTRI MALAYSIA (MSIC) 2008 Ver. 1.0
MALAYSIA STANDARD INDUSTRIAL CLASSIFICATION (MSIC) 2008 Ver.1.0

AKTIVITI PERKHIDMATAN LAIN
OTHER SERVICE ACTIVITIES

Kumpulan <i>Group</i>	Kelas <i>Class</i>	Perkara <i>Item</i>	Keterangan <i>Description</i>
94			Aktiviti keahlian organisasi <i>Activities of membership organisations</i>
	941		Aktiviti organisasi keahlian perniagaan, majikan dan profesional <i>Activities of business, employers and professional membership organisations</i>
	942		Aktiviti kesatuan buruh <i>Activities of trade unions</i>
	949		Aktiviti keahlian organisasi lain <i>Activities of other membership organisations</i>
95			Pembaikan komputer dan barangan persendirian dan isi rumah <i>Repair of computers and communication equipment</i>
	951		Pembaikan komputer dan peralatan komunikasi <i>Repair of computers and communication equipment</i>
	952		Pembaikan komputer dan peralatan komunikasi <i>Repair of personal and household goods</i>
96			Aktiviti perkhidmatan persendirian lain <i>Other personal service activities</i>
	960		Aktiviti perkhidmatan persendirian lain <i>Other personal service activities</i>
		9601	Basuhan dan cucian kering bagi tekstil dan produk berbulu <i>Washing and (dry-) cleaning of textile and fur products</i>
		9602	Dandanan rambut dan penjagaan kecantikan lain <i>Hairdressing and other beauty treatment</i>

Kumpulan	Kelas	Perkara	Keterangan
<i>Group</i>	<i>Class</i>	<i>Item</i>	<i>Description</i>
		9603	Aktiviti berkaitan pengebumian manusia atau haiwan dan aktiviti yang berkaitan dengannya <i>Funeral and related activities of human or animal corpses and related activities</i>
		9609	Aktiviti perkhidmatan lain t.t.t.l <i>Other service activities n.e.c</i>

Muka surat ini sengaja dibiarkan kosong.

This page is deliberately left blank.

PENERBITAN INI BOLEH JUGA DIPEROLEH DI JABATAN PERANGKAAAN NEGERI SEPERTI BERIKUT:

THIS PUBLICATION IS ALSO AVAILABLE AT THE FOLLOWING STATES DEPARTMENT OF STATISTICS:

Pengarah,
Jabatan Perangkaan Malaysia Negeri Johor,
Tingkat 14, Menara Tabung Haji,
Jalan Air Molek,
80000 Johor Bahru, Johor.
Tel : 07 - 225 3700
Faks : 07 - 224 9972
E-mel : jppjohor@stats.gov.my

Pengarah,
Jabatan Perangkaan Malaysia Negeri Perak,
Tingkat 3, Blok A, Bangunan Persekutuan Ipoh,
Jalan Dato' Seri Ahmad Said (Greentown)
30450 Ipoh, Perak
Tel : 05 - 255 4963
Faks : 05 - 255 1073
E-mel : jpperak@stats.gov.my

Pengarah,
Jabatan Perangkaan Malaysia Negeri Kedah,
Aras 1, Zon C, Wisma Persekutuan,
Pusat Pentadbiran Kerajaan Persekutuan,
Bandar Muadzam Shah,
06550 Anak Bukit, Alor Setar, Kedah
Tel : 04 - 700 1240
Faks : 04 - 733 8412
E-mel : jpkedah@stats.gov.my

Pengarah,
Jabatan Perangkaan Malaysia Negeri Perlis,
Tingkat 1, Bangunan Perodua Kangar,
No. 2, Persiaran Jubli Perak,
01000 Kangar, Perlis
Tel : 04 - 976 7381
Faks : 04 - 976 8950
E-mel : jpperlis@stats.gov.my

Pengarah,
Jabatan Perangkaan Malaysia Negeri Kelantan,
Tingkat 8, Bangunan Persekutuan,
Jalan Bayam,
15514 Kota Bharu, Kelantan.
Tel : 09 - 7419449
Faks : 09 - 7482142
E-mel : jpkelantan@stats.gov.my

Pengarah,
Jabatan Perangkaan Malaysia Negeri Selangor,
Tingkat 9, Bangunan Darul Ehsan,
Jalan Indah, Seksyen 14,
40000 Shah Alam, Selangor
Tel : 03 - 5515 0200
Faks : 03 - 5518 0408
E-mel : jpselangor@stats.gov.my

Pengarah,
Jabatan Perangkaan Malaysia Negeri Melaka,
Aras 7 & 8, Wisma Persekutuan,
Jalan MITC, Hang Tuah Jaya,
75450 Ayer Keroh, Melaka.
Tel : 06 - 252 2725
Faks : 06 - 252 2711
E-mel : jpmelaka@stats.gov.my

Pengarah,
Jabatan Perangkaan Malaysia Negeri Terengganu,
Tingkat 9, Wisma Persekutuan,
Jalan Sultan Ismail,
20200 Kuala Terengganu, Terengganu.
Tel : 09 - 622 3062
Faks : 09 - 622 9659
E-mel : jpterengganu@stats.gov.my

Pengarah,
Jabatan Perangkaan Malaysia Negeri Sembilan,
Tingkat 12, Wisma Persekutuan,
Jalan Dato' Abdul Kadir,
70000 Seremban, Negeri Sembilan.
Tel : 06 - 765 5000
Faks : 06 - 765 5002
E-mel : jpnsembilan@stats.gov.my

Pengarah,
Jabatan Perangkaan Malaysia Negeri Sabah,
Tingkat 1-3, Blok C, Kompleks Pentadbiran
Kerajaan Persekutuan Sabah, Jalan UMS,
Beg Berkunci No. 2046, 88999 Kota Kinabalu, Sabah.
Tel : 088 - 484 602
Faks : 088 - 484 659
E-mel : jpsabah@stats.gov.my

Pengarah,
Jabatan Perangkaan Malaysia Negeri Pahang,
Tingkat 7, Bangunan Persekutuan,
Jalan Gambut,
25000 Kuantan, Pahang.
Tel : 09 - 516 3931/7
Faks : 09 - 514 4636
E-mel : jppahang@stats.gov.my

Pengarah,
Jabatan Perangkaan Malaysia Negeri Sarawak,
Tingkat 7 & 8, Bangunan Tun Datuk Patinggi
Tuanku Haji Bujang, Jalan Simpang Tiga,
93514 Kuching, Sarawak.
Tel : 082 - 240 287
Faks : 082 - 242 609
E-mel : jpsarawak@stats.gov.my

Pengarah,
Jabatan Perangkaan Malaysia Negeri Pulau Pinang,
Tingkat 6, Bangunan Persekutuan,
10400, Jalan Anson,
Pulau Pinang.
Tel : 04 - 226 6244
Faks : 04 - 229 9499
E-mel : jppinang@stats.gov.my

Pengarah,
Jabatan Perangkaan Malaysia
Wilayah Persekutuan,
Tingkat 14 & 15, Wisma Sime Darby,
Jalan Raja Laut,
50350 Kuala Lumpur.
Tel : 03 - 2267 2400
Faks : 03 - 2274 5075
E-mel : jpwpl@stats.gov.my