

East Coast to see serious development

BH - 21/8/2006

KOTA BARU: Residents living along the proposed East Coast Corridor growth area will witness development like never before, promised Prime Minister Datuk Seri Abdullah Ahmad Badawi.

The East Coast Corridor encompasses Kelantan, Terengganu and eastern Pahang.

Under the 9MP, there are plans for the area to become a catalyst for growth in pockets of the East Coast.

Abdullah, who is on a two-day official visit to Kelantan, said the huge emphasis given to the East Coast Corridor showed that Barisan Nasional wanted to bring development to the East Coast and, was capable of doing so.

He said that Petronas has been appointed to draw-up the master plan, which is expected to be finalised by the end of the year.

"For Kelantan with its high entrepreneurial spirit, particularly among women, there will be an abundance of opportunities to tap into," he added, when closing the Islamic Hadhari village programme at

Wakaf Mek Zainab here.

Some 20,000 people attended the three-day programme.

There was an exhibition on 10 clusters of Hadhari principles and a performance by Akademi Fantasia's Mawi.

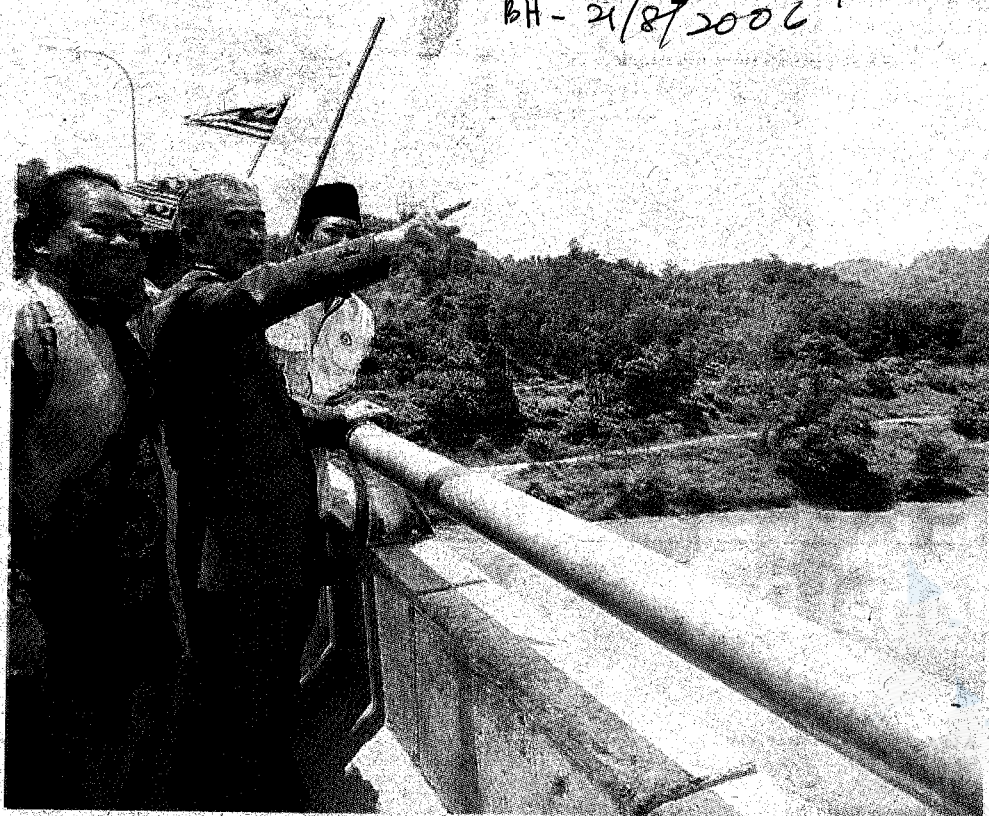
Earlier, Abdullah was briefed on the proposed RM100mil Universiti Kelantan, whose temporary campus will be at the Kota Baru Teachers Training College in Pengkalan Chepa.

He said that the university's two campuses (the main one in Bachok and the satellite campus in Jeli) would be developed under a private sector initiative.

The institution hopes to have an initial intake of 500 students by July next year.

The university will have four main faculties - Business and Entrepreneurship, Life Sciences and Environment Management, Small and Medium Industries Studies and Foreign Language Linguistics.

Higher Education Minister Datuk Mustapa Mohamed, said the temporary campus would commence operations this month.



HILL VIEW: Abdullah pointing out Stong hill to Dabong state assemblyman Datuk Ramzi Abdul Rahman (left) after opening the Dabong bridge yesterday.