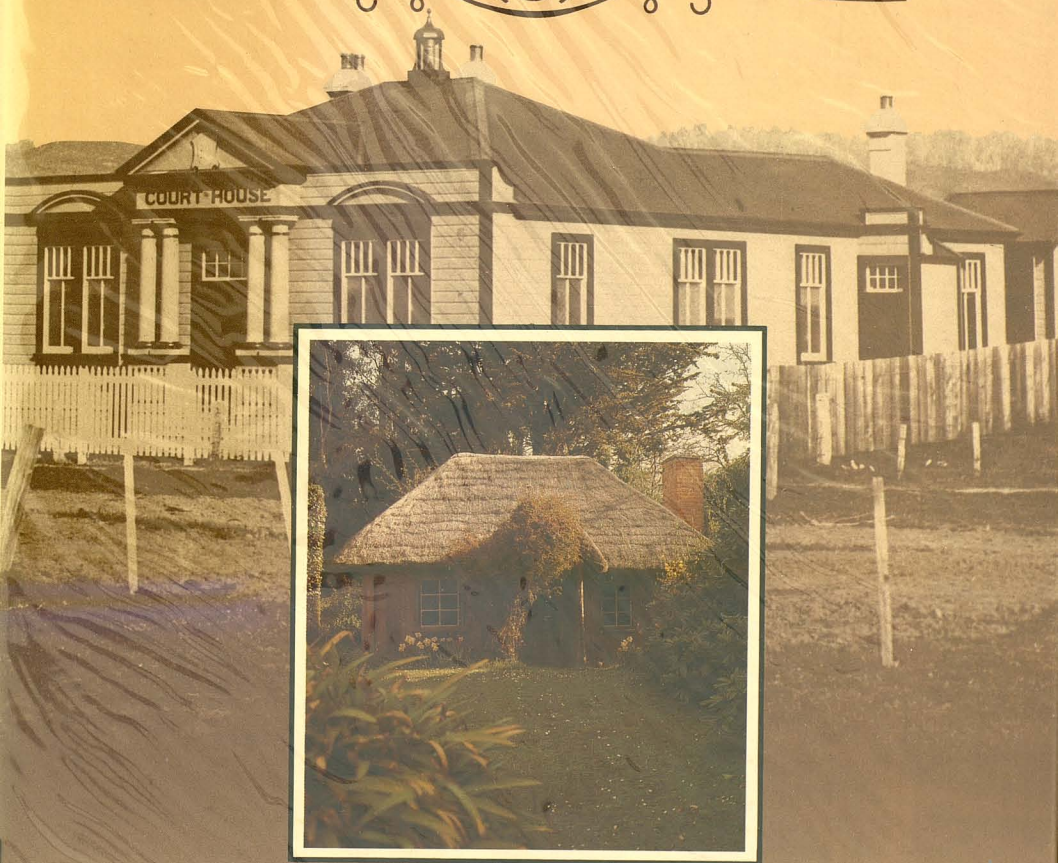




# BOOK OF NEW ZEALAND HISTORIC PLACES



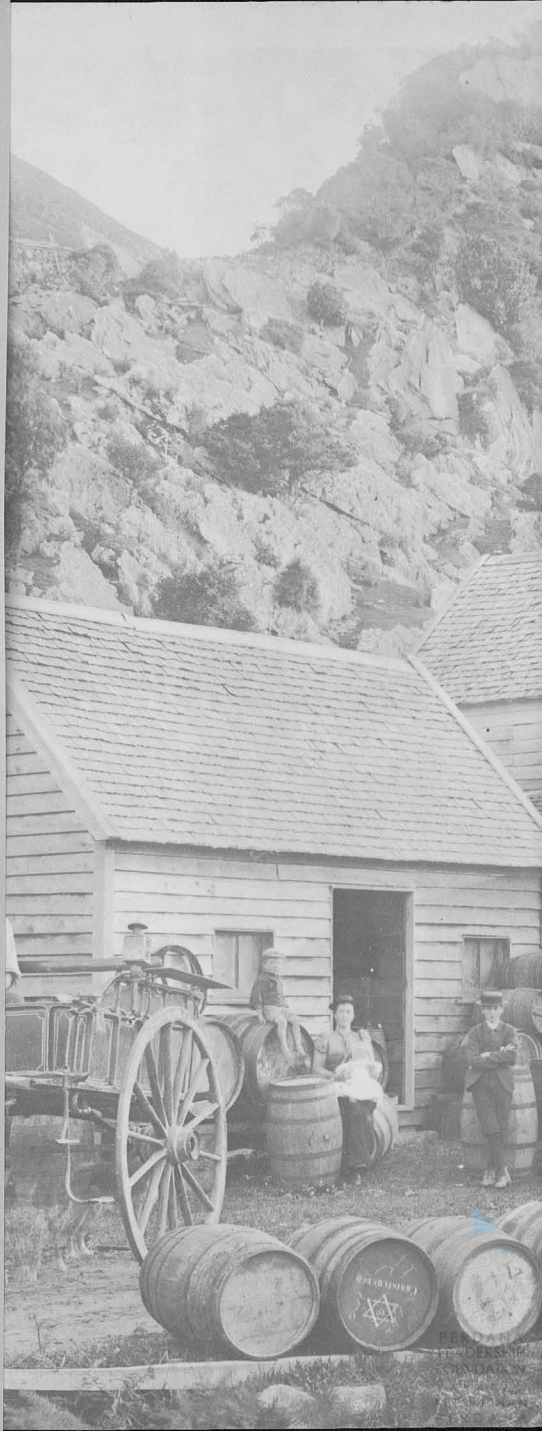
**The AA Book of New Zealand Historic Places** aims to tell the reader what kinds of historic places are to be found in New Zealand and to encourage him to seek out such places when travelling. It is a book which intends only to point people in the right direction and to whet their appetites. For the informed traveller the landscape is an open book. It is not difficult to learn how to decipher its pages, sometimes blurred and indistinct, so that journeying around New Zealand becomes immeasurably enhanced.

This book does not direct attention only to picturesque places or dramatic buildings: historic places are not always 'sights' of a kind some travellers expect them to be, but behind the facade there is always a tale to be told. And many places will only come to life if visitors use their imaginations.

Hundreds of historic places are mentioned in this book and over 300 colour and 30 monochrome photographs represent the wealth of tangible history New Zealand has to offer. Many more places have had to be omitted, an indication of the depth and breadth of the New Zealand story. It is hoped that peoples' appetites will indeed be whetted and they will search for themselves the places that space could not accommodate.

*Front cover pictures*

The Court House, Te Kuiti  
The Cuddy, Waimate







**AA**

**BOOK OF  
NEW ZEALAND  
HISTORIC PLACES**



#### ACKNOWLEDGEMENTS

Published by Lansdowne-Rigby  
a division of Rigby International Ltd.  
Unit 3, 3 Marken Place, Glenfield, Auckland

©The Automobile Association (Auckland) Inc.  
New Zealand Historic Places Trust

First published 1984

Compiled by John Wilson,  
New Zealand Historic Places Trust  
Designed by Leonard Cobb Direction Ltd.  
Edited by Christopher O'Brien  
Photography by Robert van de Voort, Profimage,  
New Zealand Historic Places Trust  
Tourist and Publicity Department  
Chris Lewis Photography  
Conrad Sims

Monochromes reproduced by courtesy:  
Alexander Turnbull Library  
New Zealand Railways

Typeset by Linoset Services Ltd.  
Separations by Supascan Studios Ltd.  
Printed by Woolmore Printing Ltd.  
Bound by Trade Ruling & Binding Co. Ltd.

ISBN 0-86866-080-9



**AA**

**BOOK OF  
NEW ZEALAND  
HISTORIC PLACES**



PUSTAKA PERDANA



1003898

**Lansdowne Press**

Auckland Sydney London New York

# CONTENTS



**NORTHLAND 12**  
**AUCKLAND 30**  
**WAIKATO 50**  
**COROMANDEL 62**  
**BAY OF PLENTY 68**  
**EAST CAPE 76**  
**CENTRAL PLATEAU 86**  
**TARANAKI 92**  
**WANGANUI,**  
**RANGITIKEI AND**  
**MANAWATU 102**  
**HAWKE'S BAY 114**  
**WAIRARAPA 120**  
**WELLINGTON 126**