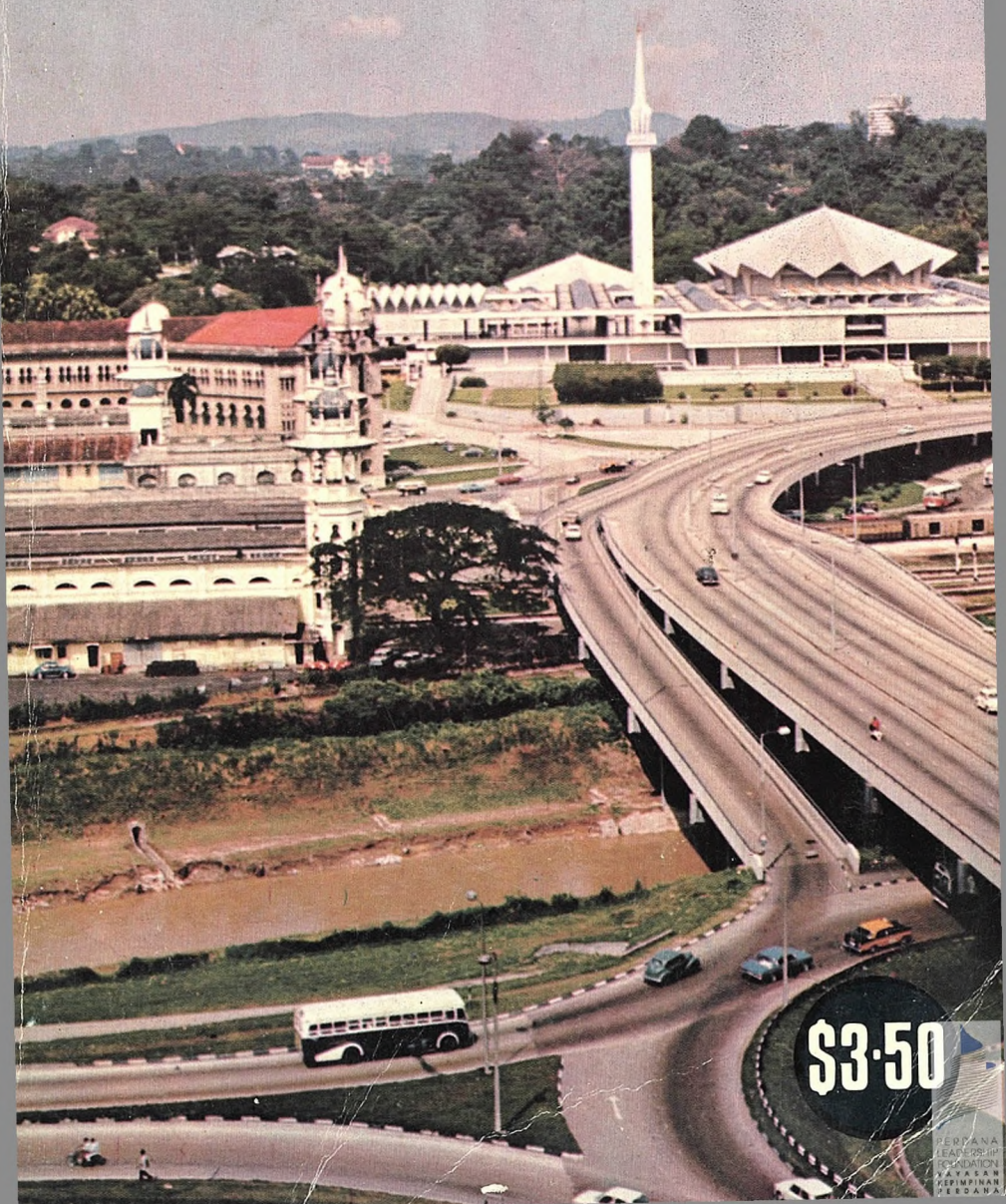


# MALAYSIA YEAR BOOK 1971



**\$3.50**

PEDANA  
LEAP-PSHP  
CEMADIKEN  
YAYASAN  
KEPIMPINAN  
PEDANA

**When In Kuala Lumpur  
stay at Malaysia's Premier Hotel...**

# *Federal Hotel*



Jalan Bukit Bintang.  
Cable: "FEDEROTEL"  
Tel: 27701 (30 lines)

Managing Director: -  
Low Yow Chuan

Manager:- R. E. Schelling



- \* 450 Luxurious Rooms and Suites
- \* Revolving Bintang Lounge
- \* Continental Sky Room
- \* Mandarin Palace (Night Club)
- \* Piano Bar and Coral Bar
- \* Coffee House (24 hours service)
- \* 2 Large Banquet halls (each for 1,000 persons)
- \* Sun-kissed Pool with Cabanas and Kontiki Room
- \* 18 Lanes Bowling Centre



# MALAYSIA YEAR BOOK 1971

KDN 532  
MC(P) 25

Copyright reserved by The Straits Times Press (Malaya) Bhd.



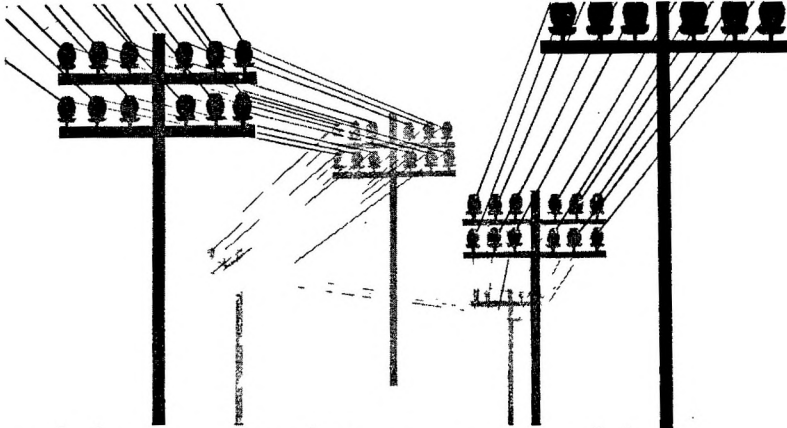
A MALAY MAIL PUBLICATION

PUSTAKA PERDANA



1006170

PERDANA  
LEADERSHIP  
FOUNDATION  
YAYASAN  
KEPIMPINAN  
PERDANA



## a vital connection between commercial centres throughout ASIA

The Chartered Bank with its wholly-owned subsidiary, The Eastern Bank Limited, has branches in every major commercial centre throughout Asia. In Malaysia, Singapore and Brunei alone, there are more than 50 branches. They offer efficient and up-to-date banking services sustained by expert knowledge and experience of Eastern trade, finance and industry.



# THE CHARTERED BANK

*(Incorporated by Royal Charter in 1853)*

Head Office: 38, Bishopsgate, London, E.C.2.

West End Branch: 2 Regent Street, London, S.W.1.

Branches in the United Kingdom at Manchester and Liverpool, in America at New York and in Germany at Hamburg.

### BRANCHES IN MALAYSIA SINGAPORE AND BRUNEI

#### WEST MALAYSIA

**KUALA LUMPUR:** (Jalan Ampang - Main Office, Leboh Foch, Jalan Ipoh, Jalan Pasar, Jalan Raja). Alor Setar, Butterworth, Ipoh, Kangar, Kelang, Kota Bharu, Kuala Trengganu, Kuantan, Penang, Petaling Jaya, Port Dickson, Port Swettenham, Seremban, Siliawan, Taiping, Telok Anson.

#### EAST MALAYSIA

**SABAH:** Kota Kinabalu, Kudat, Labuan, Lahat Datu, Sandakan, Tawau, Tenom.

**SARAWAK:** Bintulu, Kuching, Miri, Sarikei, Sibu, Simanggang.

**SINGAPORE:** Battery Road (Main Office), Alexandra Circus, Bukit Timah, Changi, Crosby House, Geylang, Jalan Besar, Jurong, Queenstown, Selyat (R.A.F. Station & H.M. Naval Base), Selegie Road, Serangoon Garden, South Bridge Road, Tampines Circus, Tanglin, Tanjong Pagar, Tiong Bahru, Upper Paya Lebar Road.

**BRUNEI:** Brunei Town, Kuala Belait (Seria).

Affiliated Banks: The Irano British Bank, Head office: Teheran, Iran.

The Commercial Bank, S.A.L., Tripoli, Libya.

The Chartered Bank of London:—

Head Office: San Francisco, Los Angeles, U.S.A.

## THE EASTERN BANK LTD.

Head Office: 2 & 3 Crosby Square, London, E.C.3.

Singapore Branch: Cecil Street · Kuala Lumpur: The Embankment

# preface

**T**HIS is the fifth issue of the Malaysia Year Book covering all the territories of Malaysia and it is our hope that this edition offers a comprehensive picture of Malaysia today. All of the chapters in this new edition have been revised maintaining our policy of providing a Year Book containing as accurate and up-to-date information as possible. We would like to thank those who have contributed so much time and effort in providing us with expert information without whose help this publication would not be possible.

It will be appreciated that policies and names are liable to change but to the best of our knowledge and belief all information was correct at the time of going to Press.

**THE MALAY MAIL**  
31 Jalan Kuala Lumpur  
Telephone: K.L. 27751

# Choose your car from the superb ranges of Peugeot and Mazda.



PEUGEOT 204 SALOON



PEUGEOT 204 ESTATE



PEUGEOT 504 SALOON



PEUGEOT 404 SALOON



PEUGEOT 404 DIESEL



PEUGEOT 404 ESTATE



MAZDA 1200 SALOON



MAZDA 1200 ESTATE



MAZDA R100 COUPE



MAZDA 1500 SALOON



MAZDA 1500 SS SALOON



MAZDA 1500 ESTATE

## See them now at any one of our branches:

Head office: 17, Jalan Bukit Bintang, Kuala Lumpur in Malaysia  
 Branches: 173, Burmah Road, Penang  
 15, Jalan Telok Sesik, Kuantan  
 32, Seberang Perak, Alor Star  
 89, Jalan Munshi Abdullah, Malacca  
 29, 11/12 Jalan Rahmat, Batu Pahat  
 90, Jalan Scudai, 5½ mile Tampoi, Johore  
 242, Padungan Road, Kuching, Sarawak  
 Associate offices: 1/3, Ngee Ann Building, Orchard Road, Singapore 9  
 78, Morrison Hill Road, Hong Kong

Dealers throughout Malaysia and Brunei

Telephone:

83391/5  
 22217/8  
 441  
 1085  
 2462  
 851  
 451  
 23560  
 71741/3  
 744048



# ASIA MOTORS

# CONTENTS

	Paga
Agriculture.....	287
Commerce and Industry .....	215
Conference of Rulers .....	377
Constitution.....	31
Cooperation .....	232
Education.....	319
Electricity .....	281
Finance .....	261
Foreign Affairs .....	135
General Government.....	41
Geography .....	9
History .....	25
Honours and Awards .....	39
Immigration.....	337
Income Tax .....	273
Johore.....	379
Judiciary .....	157
Kedah .....	389
Kelantan .....	399
Labour.....	241
Local Government.....	131
Malacca .....	409
Malaysian Capital.....	155
Medical Services.....	309
Mining Industry.....	249
National Societies .....	343
National Symbols.....	37
Negri Sembilan .....	415

# **BEFORE YOU INSURE**

**BE SURE**

**To Consult Your Society**

## **THE MALAYSIAN CO-OPERATIVE INSURANCE SOCIETY, LIMITED**

**FREE ADVICE • FREE SERVICE**

**The M.C.I.S. Policy is the best you can get.**

Ask at any M.C.I.S. Office

They are at your service at any time

They will explain that

- \* It is your Insurance Organisation
- \* You will share in the Profits
- \* Premium Rates are competitive
- \* Premium allowable for Income Tax
- \* Claims met within few days on Death
- \* Surplus funds invested in Malaysia
- \* Medical Examination free
- \* Best Surrender Value terms
- \* LOANS UP TO 95% OF SURRENDER VALUE

**Write, Phone or Call—**

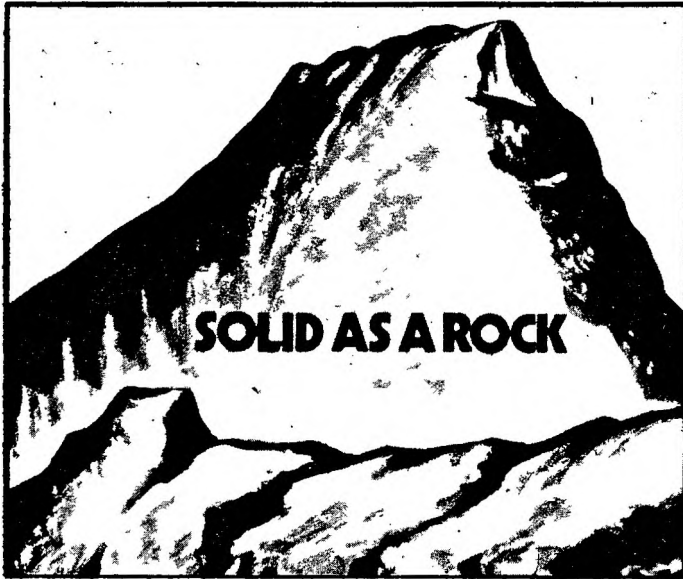
**HEAD OFFICE: 36, Jalan Ampang, Kuala Lumpur.**

**Telephone Numbers are:**

Head Office 87915-8, Penang 67569, Ipoh 72910, Malacca 4575,  
Kuantan 667, Alor Star 258, Iets Bharu 1070, Serembaa 3761.  
Johore Bahru 2384, Batu Pahat 83, Kuala Trengganu 532, Kangar 2166,  
Sungei Patani 2822, Taiping 2970, Klang 32295.



	Page
Pahang .....	421
Penang .....	425
Peoples .....	15
Perak.....	437
Perlis.....	453
Police .....	161
Post Offices .....	183
Press.....	307
Prisons.....	165
Radio and Television .....	301
Religion.....	355
Rest Houses .....	361
Sabah .....	459
Sarawak .....	479
Selangor.....	487
Sports .....	373
Telecommunications.....	205
Their Majesties .....	35
Timber.....	253
Tourism.....	357
Town and Country Planning.....	133
Transport.....	169
Trengganu .....	497
University.....	327
Water .....	285
Weights and Measures.....	371
Welfare .....	311



## The bank for all- big and small

We are glad we are the strongest and largest local Bank in Malaysia and Singapore. Because this means we can serve you with the greatest safety and effectiveness. Whether you are big or small, we welcome your business. Start solid and stay solid with the ROCK— the Bank that offers you supreme safety and security.



# OCBC

**Oversea-Chinese Banking Corp., Ltd.**

**Group assets over \$893,000,000.**

# Geography



## Position and Extent

MALAYSIA OCCUPIES A CENTRAL position within the area commonly known as South-East Asia, being a part both of the Asian land mass and of the island world of the Malay Archipelago. While the term "Malaysia" has been used synonymously with the phrase "Malay Archipelago" since the 19th century, the present political concept of Malaysia comprises only the Malay Peninsula extending south-west from the narrow Kra Isthmus to the Straits of Johore, and separated by approximately 450 miles of the South China Sea at the narrowest extent, from the northern and north-western part of the island of Borneo. It comprises the former Federation of Malaya and the former British colonies of North Borneo and Sarawak. The tiny enclave of Brunei between Sarawak and Sabah (as North Borneo is now known) and Singapore are, however, not within the Federation.

Malaysia extends as a rough arc, consisting of two portions bounded on one side and separated by the South China Sea. It lies entirely within the tropics, within latitudes  $1\frac{1}{2}^{\circ}$  and  $7^{\circ}$  north, extending from longitudes  $100^{\circ}$  to  $119\frac{1}{2}^{\circ}$  East. To the north of the Federation is Thailand, while to the south, the Republic of Indonesia maintains a land frontier of about 900 miles on the island of Borneo. Across the narrow Straits of Malacca to the west, lies the Indonesian island of Sumatra. To the north and north-east of Sabah, across the Sulu Sea, lie the islands of Palawan and Mindanao, which are part of the Republic of the Philippines.

Area: Statistics of the land area of Malaysia are as follows:-

Malaya . . . .	50,915 square miles
Sarawak - - -	48,250 square miles
Sabah . . . .	29,388 square miles
Total	128,553 square miles

## Width and Length

West or Peninsular Malaysia extends 460 miles in length from Perlis to the Straits of Johore, while the greatest length of East Malaysia is about 700 miles from Tanjong Datu in Sarawak to Hog Point on the Dent Peninsula in Sabah. The maximum width, on the other hand, is 200 miles in the case of the Malay Peninsula (between the Dindings in Perak and Tanjong Penunjak in Trengganu). The Borneo territories of Malaysia have a maximum depth of 160 miles.

## Coastline

The Peninsular Malaysian coastline extends to some 1,200 miles. The Malaysian Borneo coastline, not counting some minor indentations, is about 1,400 miles in length.

## Topography

### West Malaysia

The Malay Peninsula consists of a series of mountain ranges aligned north-west to south-east with a major central spine extending from the Thai border to as far south as Tampin in Negri Sembilan. To the west of the Central Range is the Bintang Range extending from the northern border to the Taiping area, while to its east is an area of highland in Kelantan and Trengganu, where occurs Malaya's highest peak, Gunong Tahan (7,186) feet. The juxtaposition of these three mountain masses determines the major drainage lines of the Peninsula, namely the basins of the Perak, Kelantan and Pahang rivers. Between the Bintang and Central Range, the Sungai Perak flows southward into the Straits of Malacca. On the other side of the Central Range, between it and the Trengganu Highlands, the Sungai Kelantan flows north while the Sungai Pahang, Malaya's largest river, flows first south and then east. Both the Sungai Kelantan and the Sungai Pahang empty into the South China Sea. On either side of the mountainous core of the Peninsula there is a distinct coastal plain while the relief south of it, largely in the State of Johore is subdued, being undulating with occasional mountain outcrops as at Mount Ophir (4,167 feet).

The heavy and uniform rainfall gives rise to a multiplicity of rivers which are generally narrow and swift in their upper courses, often with tortuous rapids and precipitous gorges. In the lower reaches, the descent to the coastal plain is gradual and the rivers slowly meander across the broad flat plains flanking the mountains. On the west coast the lower courses of the rivers sometimes lie through swampy land while on the east coast their entrance into the sea is sometimes impeded by sand bars, the result of powerful on-shore currents from the south China Sea. The rivers are still useful as a means of communications; in fact, the original settlement patterns and centres of local power were determined by them. The beds of the east coast rivers are more sandy than those of the west and more difficult to navigate.

The coastline of western Malaya is a practically unbroken succession of mangrove swamps and mud flats, frequently indented by picturesque bays fringed with coconut palms and casuarina trees. The east coast scenery differs considerably, with long stretches of sand and surf bordered by a littoral vegetation, in which the casuarina is prominent. It possesses a charm that is unparalleled.

About four-fifths of the Malay peninsula is covered by forest and swamps. This is likewise a feature of East Malaysia. The inland belt between the coasts and the forested mountainous interior is the agricultural zone, especially in the west, where are to be found large stretches of rubber and oil palm estates and small-holdings. Padi cultivation, though it is to be found throughout the Peninsula, is especially prominent to the north, in Perlis, Kedah, Province Wellesley and Northern Perak and in the delta of the Kelantan River on the north-east of the Peninsula. There are also fairly extensive stretches in reclaimed swamplands along the west coast, as for example, in the Tanjong Karang area of Selangor. Tin mining is the other major activity on the landscape, being especially common in the west coasts states of Perak and Selangor.

Islands on both sides of the Peninsula are another feature perhaps of more lasting interest to holiday-makers and tourists. Of the more prominent islands on the west coast are Pulau Langkawi off the north Kedah coast, rugged, beautiful and noted for its limestone scenery; Penang island, considered by many as one of the most picturesque islands of the East, and the Pangkor islands off the coast of Perak which were once a Dutch settlement. On the east coast, Pulau Tioman, the

largest island, with its beautiful scenery set against its granite peaks, ranks amongst others washed by the South China Sea.

#### East Malaysia

Malaysian Borneo is crisscrossed by a variety of relatively low mountain chains which are really masses of dissected highland, with occasional peaks largely below 6,000 feet. Mount Kinabalu in Sabah, however, towers over all else and its height of 13,455 feet makes it Malaysia's highest peak. The Crocker Range in Sabah which culminates in Mount Kinabalu is the only fairly continuous mountain range, attaining a high average elevation of 2,500 to 3,000 feet, with its mountains rising to over 4,000 feet. Other high peaks are Mt. Trus Madi (8,500 feet) in Sabah and Mt. Murud (8,000 feet) which is the highest in Sarawak. Much of the interior is forested and virtually underdeveloped. Relatively level land lies interspersed among the mountain ranges. The mountainous mass is more compact and extensive in the interior, where the watershed between the rivers generally flowing north-west into the South China Sea and those flowing into the Celebes and Java Seas mark the boundary of much of Sarawak and Indonesia.

The remainder of East Malaysia comprises an alluvial coastal plain and behind it a belt of undulating though in parts extremely rugged country which is adjacent to the interior mountain ranges and runs northeast-southwest all the way through Sarawak, Brunei and western North Borneo. Much of the indigenous population, especially of Sarawak, are to be found here. The coastal lands, varying in width from less than a mile (as at Miri) to over a hundred miles, are however, low-lying. They are interrupted occasionally by low hills or even mountains, which when adjacent to the sea form sea-eroded cliffs. Much of this part of Sarawak consists primarily of swamp and alluvial deposits, including peat. Limited areas of alluvium or where the peat is shallow can be cultivated. However, much of the deep peat is unsuitable for agriculture. In contrast, coastal swamps are less extensive in Sabah where the mountain ranges lie much nearer to the coast and the coastal strip is drained by a number of relatively short streams. This coastal area is the most developed part of Sabah, cultivated largely with rubber and rice.

The rivers are swift in their earlier reaches but meander across the coastal plain to the sea. The more important rivers in Sarawak are the Sarawak (70 miles long), the Batang Lupan (142 miles), the Rejang (350 miles), the Baram (250 miles) and Limbang (122 miles). The Rejang, the largest, is navigable for small coastal steamers up to Kapit, 150 miles upriver. In Sabah, the swift streams flowing along the slopes of the Crocker Range into the South China Sea contrast with the more gentle rivers that flow into the Sulu Sea. The east coast rivers of Sabah are the Kinabatangan (350 miles long), the Sugut, the Lubuk and the Segama. The Padas River, which drains a large area of the inland lowlands has cut into the Crocker Range to flow into Brunei Bay near Beaufort.

The coastline along the South China Sea is regular. This and the heavy silting is not conducive to good harbours. In contrast, that facing the Sulu and Celebes Seas in Sabah is highly irregular and has a number of excellent harbours at Kudat, Sandakan, Lahad Dato and Tawau. The only good harbour on the side facing the South China Sea is on Labuan island, about 35 miles out in Brunei Bay.

#### Climate

Proximity to the equator has given Malaysia a climate of high humidity and uniformly high temperature with copious rainfall. The equatorial climate is modified by the region's insularity and exposure to a monsoonal wind system that originates in the Indian Ocean and the South China Sea. The climate on the whole is pleasant and equable and the humidity is bearable though sometimes unpleasant.

The northeast and southwest monsoons divide the year into two periods. The northeast monsoon begins in October or November and lasts until February or March while the southwest monsoon blows from mid-April or May to September or mid-October. These seasons occur slightly earlier in Malaya as compared with the Borneo territories. Two inter-monsoons period each of about eight weeks duration are distinguishable. There are no prevailing winds during the intermediate seasons but daily convective rain is abundant.

In fact, the period of heaviest rain in Malaya is during the intermonsoon period, though on the east coast the period of the northeast monsoon brings the greatest amount of rain while the west coast has its wettest period during the southwest monsoon. The average rainfall in Malaya is about 100 inches a year, though varying from place to place. The east coast has an average of about 120 inches, Maxwell's Hill near Taiping receives 201 inches with the Jelebu district Malaya's driest locality, sheltered from both monsoons, receiving only 65 inches per annum. A large area of Sarawak has between 120 and 160 inches of rain per year. Sabah has between 60 and 160 inches. Kuching in Sarawak has an average of 158 inches with equally heavy rain in the region of Beaufort and Labuan in Sabah. Low rainfall largely prevails in the interior of East Malaysia though the mountainous terrain can affect the amount and distribution very greatly in different parts of the country and even in localities only a few miles apart.

Thunderstorms are frequent. Malaysia is outside the typhoon belt and cyclones are almost unknown. During the southwest monsoon, sudden squalls and violent gusts are more frequent especially in the area of the Straits of Malacca where they are known as "Sumatras".

Temperatures are constant throughout the year, average monthly temperatures varying only about 4° F. However the daily temperatures show great variation, the daily range at coastal locations being 10 F to 15 F (a mean daytime maximum of 85°F to 90°F and a mean minimum of 72°F to 75°F at night). Inland locations show a range of 15° to 20°F. In Malaysian Borneo night temperatures in the interior highlands of over 2,000 feet may drop to as low as 55°F. Over Malaysia as a whole the average daily temperature varies considerably from 70°F to 90°F, though in higher areas, lower temperatures obtain. Relative humidity is generally high, being higher generally in the night than during the day.

## Flora

Constant high temperatures and high rainfall and the lack of definite dry seasons have provided excellent conditions for the growth of vegetation. Apart from the coastal plains of swamp forest, both mangrove and fresh-water in Malaya and Malaysian Borneo, about 70 per cent of the Federation is covered by virgin tropical rain forest up to an elevation of about 2,000 feet. At elevations higher than 3,000 feet is to be found the flora of moss forests with a dwarf vegetation, a forest in a state of perpetual dampness.

In the lowland dryland forests the vegetation is dominated by immense trees, the larger of which are about 150 to 200 feet or more in height with circumferences of 10 feet or more, with large cylindrical stems and massive crowns at the top which form an evergreen canopy. The trees themselves provide a home for a wide variety of plants of different habits: these include large lianas, as the rattans (climbing palms) which compete for light with the larger trees together with other climbers on the stems of trees extending to ground level. Other epiphytes, largely orchids, abound throughout the canopy.

With increased light, often as a result of felling and man-made clearings or as the aftermath of the slash and burn shifting cultivation practised by the indigenous tribes, especially in Sarawak, a dense undergrowth, called *belukar* in

Malaya, rapidly springs up. Perhaps the density of this belukar might have given rise to the misconception of the impenetrability of the tropical jungle, for so few persevere to break this tangled undergrowth into the true rain forest beyond where the undergrowth is minimal due to the lack of light which is unable to penetrate the forest canopy.

Parasitical vegetation too is to be found within the rain forest, through not in the abundance in which they are supposed to occur. The few that are to be found include members of the mistletoe family and a specis of Rafflesia in Sarawak which produce the largest flowers in the world, which may measure up to a yard across. The well-known pitcher plant (Nepenthes) is often abundant on poor soils where they obtain some of their nutrients and digesting insects.

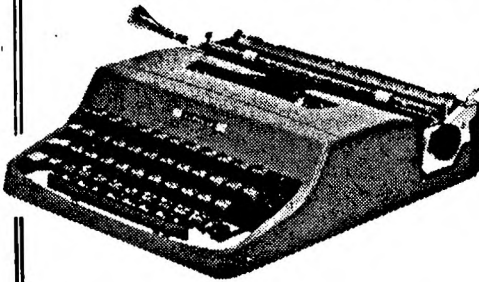
#### Forestry

The lowland rain forest comprises a multitude of species of trees, though the majority are of the family Dipterocarpaceas. It is estimated that over 2,500 species occur. There are many naturally durable hardwoods available such as Chengal (*Balanocarpus Leimic*) Balan (*Shorea Spp.*) and Merbau (*Intsia palembanica*). Medium hardwoods include Keruing (*Dipterocarpus spp.*) Kapur (*Dryobalanpps Spp.*) and Kempas (*Koompassia Malaconsis*). Of the light hardwoods, Meranti and Jelutong are important.

#### Forestry Policy

There is legislation to safeguard the economic exploitation of timber resources. In Malaya, Forest Reservation now extends to over 8,000 square miles of productive forest and 4,500 square miles of protective forest, totalling 26% of the total land area.

## TYPEWRITERS AND GENERAL AGENCIES



Contact us for  
your typewriters.  
We specialize in  
sales, service and  
maintenance of  
typewriters.

118 Jalan Tuanku Abdul Rahman, Kuala Lumpur.

Telephone: 83776

# MAP

---



# OF MALAYSIA

- POLITICAL —



PERDANA  
LEADERSHIP  
FOUNDATION  
YATASAN  
KEPIMPINAN  
PERDANA

# Peoples



MALAYSIA HAS A DIVERSITY of races and cultures in a population of just over 10 million. There are the indigenous peoples of Sarawak and Sabah, who besides Malays, comprise Sea Dayaks or Ibans, the Land Dayaks, the Melanans, Dusuns Kadazan, Punan and other minor groups whose way of life varies from the sedentary wet rice cultivation of the coastal strip to the slash-and-burn dry rice shifting agriculture and hunting economy of the interior. In Malaya, the indigenous people are practically all Malays who lead a predominantly rural life. Malaya, too, has an aboriginal population of about 50,000. Against this indigenous background are the immigrant peoples, largely Chinese, who, together with Indians, Pakistanis, Arabs and others dominate the urban scene. The Chinese are largely occupied in the tin and rubber industries and in business and commerce. The Indians, largely Tamils from South India, work as labourers in the rubber plantations. Increasing numbers of people of all races are now engaged in professional activities and in the civil services. The Europeans, mainly British, continue their role in rubber, tin, commerce and the professions. The Eurasians, large numbers of whom are of part-Portuguese extraction from Malacca, add further to Malaysia's racial complexity.

## POPULATION

The estimated population of Malaysia, according to Census and population estimated figures, is as follows:-

	Male	Female	<u>Total</u>
*West Malaysia	4,604,227	4,414,609	9,018,836
**State of Sabah	327,328	295,152	622,480
**State of Sarawak	473,309	460,300	933,609
	5,404,864	5,170,061	10,574,925

Note: \* as at 30th June, 1969

\*\* as at 31st December, 1968.

## Malays

The Malays are believed to have originated in the region of Yunan in China. There have been some fairly recent Malay immigrants into Malaysia from Indonesia, especially from Sumatra and the Celebes. Being co-religionists, these have now been rapidly assimilated with the older inhabitants.

The Malays are a predominantly agricultural people: they cultivate the bulk of the padi land of Malaysia. Many of them are smallholders. Fishing is important, especially on the coasts. Some are wage earners in rubber or oil-palm estates while increasing numbers are becoming urban dwellers, many in the professions, in government service and as industrial workers.



## Religion

The Malay is an orthodox Muslim of the Shafi'ite school. The basic principles of the Malay religion as a Muslim are the declaration of faith in the aweness of Allah and in the divine messengership of the Prophet Muhammad; prayer five times a day; distribution of Zakat or poor rate; fasting in the month of Ramadan and pilgrimage to Mecca for the performance of the Haj. Islam is the state religion of Malaysia. In the various states, the Sultan is the religious head. All Muslim religious matters, observances or ceremonies which apply to the country as a whole are now decided by the Conference of Rulers.

## Social Systems and Customs

Two systems of social organizations are to be found, namely that associated with "adat temenggong" which is patrilineal and the other the "adat perpatih" which is matrilineal. It is the "Adat Temenggong" which is the more pervasive. However, it is the "Adat Perpatih" which is the more cohesive in its rules and is confined to the states of Negri Sembilan and part of Malacca.

Malay 'adat istiadat' (customs and traditions) include the 'adat resam' observed by the Malay community in general, covering household and kampong customs, of marriage, birth and death and the other major events of life and the 'adat istiadat di-raja' or royal customs and traditions applying to the royal courts, of significance largely on ceremonial occasions. Obligations of respect and obedience demanded of children towards parents, community attitudes of mutual neighbourly help and co-operation, known commonly as bergotong rayong, the maintenance of law and order through co-operation and respect for the ketua kampong or penghulu (village headmen) are all part of the 'adat resam' to which the Malay is subject and which serves to bind Malay society together. The piercing of ear-lobes of girls between the age of 5 and 10 (a custom of pre-Islamic origin), the bersunat or circumcision of boys (which is required of all Muslim males) and the ceremonies of engagement and marriage, the various customary practices associated with childbirth are among the many and varied activities in Malay social life. Each has its distinctive prescribed pattern. Invariably, ceremonial occasions are not complete without kenduris (feasts). Over all activities, however, is the overtone of Islam for ceremonies are accompanied by the utterance of doa (prayers) in Arabic. Marriages have to be conducted in accordance with the Islamic law and in the presence of witnesses. Islam, too, permits its adherents to marry four wives.

## Burial

Burial customs of the Malays also conform to Islamic practice, the body being shrouded in cotton cloth and buried on its side, facing Mecca.

## Festivals

The two most important festivals of the year are Hari Raya Haji, celebrating the successful conclusion of the Pilgrimage, and Hari Raya Puasa, the celebration marking the end of the fasting period. The birthday of the Prophet Muhammad is celebrated on a grand scale with processions, prayers and feasting. The Muslim New Year falls on the first of Muharam.

## Dress

The men usually wear European clothing, but on ceremonial occasions wear full Malay dress consisting of "Baju" and a pair of long loose trousers, with sarong around the waist, over the trousers. Head-dress consists of a black songkok, or "Tanjak" or "Tongkokloh" for more ceremonial occasions. The women usually wear baju kurung, consisting of a loosely fitting blouse over sarong, or baju kebaya, a tightly fitting blouse over sarong.

## Food

Malay food consists of a staple diet of rice together with spiced curries of meat, fish, vegetables and other delicacies. The coconut is an essential ingredient in Malay curry; apart from the use of coconut oil, the whitish coconut milk, squeezed out of grated coconut, is an essential ingredient in virtually all preparations. In food habits, too, religion has its influence. Islam forbids the partaking of pork and the flesh of predatory animals and birds, rodents, reptiles, worms and flesh of dead animals or that offered as sacrifice to idols. Even the partaking of lawful animals is limited to that which is slaughtered as prescribed in Islam.

## Language

The Malay language spoken in Malaysia has the same roots as "Bahasa Indonesia" or Indonesian, the official language of Indonesia. It belongs to the Malay Polynesian family of languages which extended from Formosa to New Zealand and from Madagascar to Easter Island in the Pacific Ocean. The standard pronunciation is that of Johore and the Riau archipelago, though it is spoken with dialectical variation throughout the region. Malay is the national language of Malaysia. Already, both in Malaya and in Sarawak and Sabah, Malay is widely used as a lingua franca among all peoples. Currently, the Dewan Bahasa dan Pustaka (Language and Literature Agency) is engaged in developing and enriching the national language.

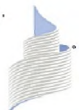
There are two forms of Malay script in use today. The Jawi script employs the Arabic alphabet, augmented by five letters. The Roman script, known also as Rumi, is also now being popularised. Much of the literature in the Malay language is in the Jawi script.

## Chinese

About 42 per cent of the population of Malaysia is Chinese. Their concentrations vary: in Malaya, 37 per cent, in Sarawak 31 per cent and Sabah 23 per cent, in Malaya, the Chinese are more concentrated in the west coast States, particularly in the towns and industrial areas. The same pattern of heavy concentrations in urban areas also obtain in East Malaysia. Nevertheless, they are to be found throughout the whole area of Malaysia for they have penetrated even into remote districts. They are usually the shopkeepers or tradesmen in practically every village and their economic role far outweighs their numbers.

Chinese arrived in the country at a very early date, but it was not until 1786 when British influence was established, and particularly from the mid-1800's onwards with the need of British colonial enterprise for a larger and more willing labour force, that Chinese immigration became large-scale. In Malaya, the Chinese were mostly recruited to develop the tin deposits while in East Malaysia they were brought in to work on the tobacco and rubber plantations and in other economic activities. These immigrant streams were fed by successive groups of relatives and friends. However, the Chinese immigrants were not prepared to remain as contract labourers. Large numbers of them struck out as farmers, small planters and, most significantly, as traders and middlemen.

Today, the majority of the Chinese in Malaysia are local born but virtually all of them have their origins in the south-eastern provinces of China and the island of Hainan. Their main dialects are Cantonese, Hokkien, Teochew, Hakka and Hailam. They are largely Buddhists although a sizable number are recent converts to Christianity. They have brought to Malaysia not only their native skills and industries but also their culture. Hardworking and thrifty, they have contributed considerably to Malaysia's economic rise.



## Religion

There are three main Chinese beliefs – Confucianism, Taoism and Buddhism, the first linking and strengthening family life, the second seeking freedom from materialism, and the third preaching a doctrine of reincarnation and purgatory, and obligations of ancestral worship.

## Language

There are numerous dialects, differing widely but stemming from a common stock, but the written word is universal. While the Cantonese dialect is believed to be the nearest approach to the ancient primitive language, Kuo Yu is the official spoken language today.

## Customs – Dress

There are many types of Chinese costumes of varied styles. The poorer labouring classes wear loosely fitting jackets with wide trousers with conical shaped rattan hats. The wealthier classes, especially the men, have adopted the fashions of the West, but the women mostly wear either the Cheongsam, meaning 'long dress' in Cantonese, and which is cut in one piece with high collar, or Samfoo, similar to the pyjama style of the West, but with the high collar of the Cheongsam. The old traditional costumes are usually worn at marriage ceremonies.

## Marriages

Betrothal and wedding customs of the Chinese vary slightly according to the clans. The formal betrothal takes place ten days before the date fixed for the wedding, when the bridegroom sends presents of gold and food. These serve as an indication of the forthcoming wedding to friends and relatives. The transfer of the bride and her chattels to the house of the bridegroom signifies the completion of the marriage, which, apart from the civil ceremony, is not celebrated with any religious rites.

## Festivals

Festivals are numerous but the most important is the Chinese New Year, with festivities beginning on the 24th of the 12th Moon. Sacrifices are made to Tsao Wong – the Kitchen God, whose image is to be seen in most Chinese homes. The Feast of the Lanterns, which dates back to the Han Dynasty (206 B.C. – A.D. 220) takes place on the 15th Night of the First Moon.

Ch'ing Ming or Cheng Beng is the time when all graves must be repaired and cleaned, and offerings are made to appease the local God of the Soil, Tu Shen. Various other festivals to commemorate ancestral worship are celebrated during the year.

The Dragon Boat Festival, Moon Cake Festival, Festival of the Seven Sisters, Birthday of the Jade Emperor and many other Chinese festivals the framework of which still survive in a modified manner, illustrate how tenaciously the Chinese adhere to the ancestral and religious observances, all of which tend to bind the Chinese community together.

## Burial

Actual burial customs vary from place to place. The body having been washed, is swathed in wadding, and then fully clothed, complete with socks and shoes. The coffin lies in state for all to mourn. On the eve of the funeral, paper offerings representing objects with which the deceased was familiar in life, are buried. The coffin on the day of burial is escorted by mourners, women following in precedence behind the coffin and men in front, plus an impressive procession of banners, lanterns, paper flowers, accompanied by bands playing funeral music, the size of the procession depending on the wealth and status of the deceased. At the cemetery, the coffin is lowered into the grave and the burning of the paper articles marks the end of the ceremony. Chinese customs on politeness differ from



the West. The principal guest is seated on the left, instead of the right; instead of a handshake, the Chinese clasps his hands before him, and moves them up and down – as high as the forehead, accompanied by a deep bow when acknowledging a superior. Both hands are used to pass an object, and the recipient should use both in accepting an object, thus showing respect. Most entertaining is done at restaurants, and according to the old custom, with men and women eating at separate tables, or, women being excluded from the invitation. Politeness and the small rules of etiquette are deeply ingrained in every Chinese.

#### Food

The Chinese are connoisseurs of food and their dishes can be reckoned in the thousands, with four different styles of cooking which are outstanding – Peking, Shantung, Canton and Szechuan. An enormous variety of food is used in recipes, and the number of courses served at a dinner depends on the circumstances of the occasion and wealth of the host.

### Indians

#### Religion

The majority of Indians are Hindus. The most obvious characteristics of the ordinary Hindu are that he worships a plurality of Gods. Hinduism is not a religion established by a single person. It is a growth of ideas, rituals and beliefs, so comprehensive as to include anything between atheism and pantheism. Puranic Hinduism i.e. the orthodox Hinduism of the present day is divided into six sects: Vaishnavas, Shivas, Saktas, Ganapatyas, Saurapathas and Sinarthas.

#### Language

The common languages spoken by Indians in Malaya are: Gujarati, Hindi, Malayalam, Marathi, Oriya, Punjabi, Tamil, Telugu and Urdu. These are but a few of the many Indian languages.

#### Customs – Dress

Most Indian women wear a sari and choli. The sari is a straight piece of material six yards long which is wrapped around the lower part of the body to form a skirt and draped up over one shoulder. The choli is a plain fitted blouse. The national dress for an Indian man is a dothi – a straight piece of material approximately four yards long – and on ceremonial occasions he wears a long fitted coat and turban.

#### Marriages

There are two forms of marriage among the Indians, the Brahma, nominally a gift of the bride by her father to the bridegroom, and among the lower castes, the Asura, nominally a purchase of a bride by the bridegroom. Marriage between close relatives is forbidden, but the marriage must be within the caste. A Hindu man may marry any number of wives and may have any number concurrently. There is no divorce in Hindu law, but divorce is sometimes practiced by members of the lower castes.

#### Festivals

The numerous Indian religious beliefs and the varied cultural traditions of the different ethnic groups have engendered various forms of festivals – religious and traditional. Only a few festivals are celebrated by the Indians in Malaya. Among those celebrated are Hindu New Year, Thaipusam, Deepavali and Ponggol. Deepavali is the festival of lights, symbolising good over evil. Ponggol is a three-day harvest festival celebrated in January. Thaipusam is the festival where the devotees do penance in order to fulfil their vows.

#### Burial

There are very few Hindu burials as the Hindus do not bury their dead, but instead the corpse is cremated. Only expectant mothers and children are buried.

The cremation ceremony lasts anywhere from ten to thirty-one days. On the first day the body is cremated, on the third day the calcined bones are gathered and placed in an urn or container which is buried near the place of cremation. The container is unearthed on the tenth day and presented to the family of the deceased. The Shradddha – a series of minor ceremonies – is performed at some time between the tenth and thirty-first day.

Food

Indian food is hot and spicy. Curry, in numerous varieties, is the favourite dish of the Indians. The curry is eaten with rice and chapatties.

## **INDIGENOUS PEOPLE OF EAST MALAYSIA**

The peoples of East Malaysia can be broadly divided into two groups according to the adherence to Islam. Those professing Islam are known generally as 'Malays' whether they be Malays proper or Muslimized groups such as the Melanan, Kedayan, Bajau, the Bruneis or a group found around the northern tip of Sabah comprising Sulus, Ilanans and Tidongs. This Malay group comprises about 38 per cent of the indigenous peoples.

### **Malays and Para Malays**

These are descendants of people originally in Borneo before the coming of Islam and share a similar traditional culture. They are a predominantly coastal people, living in kampongs in individual houses on stilts which distinguish them markedly from the interior indigenous groups among whom the longhouse is prominent. Fishing, the cultivation of wet rice and of sago is their mainstay, which again contrasts with the dry rice shifting cultivation of the interior.

The Malays proper number over 120,000 and are mostly to be found in Sarawak. They have an aristocratic tradition, which, however, is most marked in Brunei (not part of Malaysia) which has its 28th ruler on its throne. In Sarawak, the Malays have had a long tradition in government service.

The Melanans comprise the largest segment of the relatively recent converts to Islam. They are a coastal people of the 3rd and 4th Division of Sarawak and are related to the Kayans of the interior. The non-Islamized group of Melanan people are known as "Liko". The Melanans are now much mixed with the Malays. Apart from rice planting and fishing they own extensive sago plantations and are also engaged in timber extraction.

The Kedayan, another Muslim group, said to be descended from Javanese immigrants, live in the 4th and 5th Divisions and also in Sabah along the west coast fringe from Brunei Bay to Kota Kinabalu. They are, however, mainly to be found in Brunei. Agriculturalists, rice is their chief crop.

Bajan – it has been speculated that these people might have come originally from Johore as an exiled court group. They are largely to be found in Sabah, on the east coast and adjacent islands. They are essentially a seafaring people, once notorious as pirates, but now fisherman and cargo carriers. A large community of Bajans has, however, taken to padi planting and cattle farming in the Kota Belud district. They number about 45,000 or about 7 per cent of the indigenous population.

Ibans

Known otherwise as "Sea Dayaks", the Ibans are the largest single indigenous group in Malaysian Borneo, comprising about 29 per cent of the indigenous population there. Though they are to be found all over Sarawak along the banks of rivers, they are largely concentrated in the 2nd and 3rd Divisions. They were once head hunters. It was perhaps their piratical forays out to sea which earned them their name of Sea Dayak.

They are still veteran boatmen. Originally dry rice cultivators, practising shifting cultivation along the hill slopes, numbers of them have now turned to the

more sedentary cultivation of wet rice and cash crops such as rubber. There are also some Ibans, educated Christians living near the coast who work as clerks, school teachers and government servants.

They are still a predominantly longhouse dwelling community. Each longhouse has a communal outer-room and open verandah though each family has an inner private room. The longhouse is presided over by an elected headman known as the "Tuai Rumah" and a group of houses elect their own chief or "Penghulu"

The Ibans are without any rigidly defined social class and social prestige is measured in terms of personal achievements such as the accumulation of wealth, knowledge of ritual, wisdom in council and formerly, even head-hunting. Marriages in Iban society are monogamous, as indeed it is so amongst most non-Muslim indigenous people in East Malaysia. Marriages are normally within relatively close kin of the same generation.

#### Land Dayaks

These are to be found largely in the inland area of south-western Sarawak in the 1st Division. Longhouse dwellers, they identify themselves more readily by village and locality than by any wider grouping. They are related to the Ibans. Their villages resemble those of the Ibans but are generally a complex of several small longhouses which lack the open verandah which are a feature of the Iban longhouse. Culturally, the Land Dayaks are less uniform than the Iban, and there is local variation among them both in language and custom, especially language, with a surprisingly wide variety of dialects for a relatively small group of about 45,000 people. They constitute only slightly over 6 per cent of the indigenous population of East Malaysia.

Like other interior groups, the Land Dayaks practice slash-and-burn dry rice agriculture, although some groups also cultivate wet rice. However, they do not shift even when their land is overworked and impoverished unlike other groups.

The Land Dayaks has no elaborate social stratification based on distinctions of wealth and achievement. They are mild and unaggressive. Whereas, households in other indigenous groups rely largely on their own efforts in their economic pursuits, the Land Dayaks have developed a complex system of labour exchange within which the individual family spends more time working on the fields of their neighbours than it does on its own.

The chiefs are known as 'Orang Kaya' and not 'penghulu'. Unlike the Ibans, the Land Dayaks do not elect their "Orang Kaya" but instead the members of the village meet and discuss possibilities until agreement is reached on one candidate.

#### Dusuns

The Kadazans (formerly known as Dusuns) are found mostly in Sabah where they are the largest indigenous group. They comprise about 50 per cent of the Sabah indigenous population. They inhabit chiefly the West Coast and the plains of Tambunan and Ranou in the interior. The term Kadazan often covers the Muruts of Sabah as well. The term itself is not a name for a distinct tribe but one given by outsiders to a group of similar peoples. They are primarily agriculturalists and are Sabah's chief rice producers. Above all among the native peoples, they intermarry freely with the Chinese.

#### Other Indigenous Groups

The remaining indigenous groups comprise about 25 per cent of the total population, of which the Murut-Kelabit account for 18 per cent. There are inland peoples, found mainly in eastern Sarawak and North Borneo. They resemble other indigenous groups in their social and economic pattern, with the usual shifting agriculture and longhouses. They live in isolated small villages, scattered along the middle and upper reaches of the rivers.



## Muruts

The term Murut does not denote the same community or tribe in Sabah, Sarawak, Brunei or in Indonesian Borneo. Some of these groups, for example, the Peluan, Tagal and Nabai Baokan are on the order of sub-tribes. Most of the people who are called Muruts in North Borneo would be called Tagals in Sarawak. There are also differences in language between the Muruts of Sabah and Sarawak. In Sarawak, the Muruts and their relatives, the Kelabits, are largely to be found in the 4th and 5th Divisions. They are productive padi-planters. The Muruts of Sarawak have now been converted to Christianity. In Sabah, they are to be found in the more inaccessible parts of the country, in the upper reaches of the Padas River and the area near the Indonesian and Sarawak border. Shifting cultivation is their livelihood. Occasionally, they seek temporary work on the rubber estate of the Tenom Valley. The Murut-Kelabit comprise less than 4 per cent of the indigenous population.

They are considerable hunters. Their diet consists primarily of tapioca and hill padi and tapai, a rice brew. Their meat is often enjoyed after being buried in the ground to rot for a while. They are primitive in their habits.

## Kayan Kenyah Kajang Group

These tribes comprise less than 2 per cent of East Malaysia's indigenous population and are the inhabitants of the Upper Rejang and Baram and Ulu Kemera area of Sarawak. They are believed to have come from the Batang Kayan area of Indonesian Borneo. A number of small communities known as Sebops and Barawans from the Baram River region and the Kejamans and Skapans from the Rejang River area is also included in this group. In the 4th Division, they are known as 'Orang Ulu'.

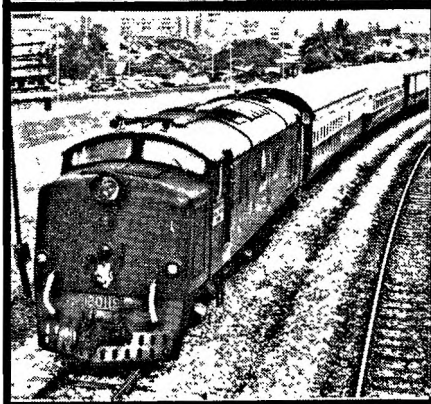
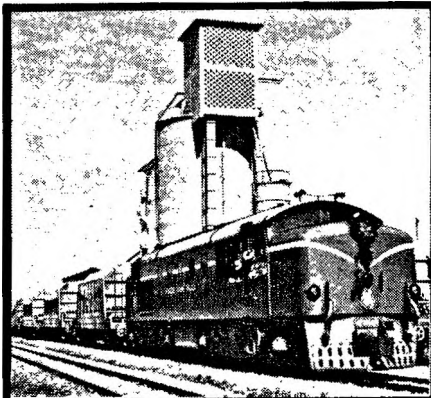
Formerly more powerful, they were great rivals of the Ibans. In the middle of the 19th century the power of the Kayan group extended from the Rejang to the Limbang. The defeat of the Kayans by the Ibans, led by the second Rajah Brooke in the great Kayan expedition of 1863, resulted in their decline.

They are also longhouse dwellers in common with the interior peoples of Malaysia. Very class conscious, their social structure contrasts greatly with that of the more egalitarian Ibans and Land Dayaks. Social gradation is even evident in their doors, those of the chiefs being in the centre of the house and often very large and imposing. The other doors decline in rank outwards and become smaller towards each end of the house. The Kayans and Kenyahs are noted too for their artistic qualities, being great singers and dancers.

## Punans

Also to be found in Sarawak and known variously as Punans, they are a nomadic community of longhouse dwellers. They constitute less than 1 per cent of the indigenous population though very numerous in Indonesian Kalimantan. They do not cultivate, being pure food gatherers and hunters, living off wild sago and wild vegetables and animals hunted with blowpipes. They have no permanent dwellings, living in little lean-tos by night.

# *Serving Malaysia by Rail*



**KERETAPI offers the following services:**  
**Passenger, Freight,**  
**Express Parcels,**  
**Door to Door Handling,**  
**Private Siding Facilities,**  
**Godown Spaces,**  
**Hotel Accommodation.**

**It's fast, convenient  
and economical by Rail.**

**ENQUIRIES TO:**

**KERETAPI**  
**PETI SURAT 1, K.LUMPUR.**



# QUASI-ARC



## VITEMAX

An all-position electrode suitable for general repair work, ship repairs and ship construction.

APPROVALS: Lloyds Register of Shipping; American Bureau of Shipping; Bureau Veritas; Det Norske Veritas; N.K.K.

## DUROID No. 2

An electrode for all medium hardfacing  
(Deposited Hardness 350-410 VPN)

Made in Singapore by  
SINGAPORE WELDING LIMITED.

Distributed by  
**SINGAPORE OXYGEN PRIVATE LTD.**  
P.O. Box 4001, 7 m.s. Bukit Timah Road,  
Singapore 21. Tel. No. 662133

Made in Malaya by  
MALAYAN WELDING PRODUCTS SDN. BHD.

Distributed by  
**MALAYAN OXYGEN SDN. BERHAD**  
Sungei Besi Road, Kuala Lumpur.  
P.O. Box 633, Jalan Ampat,  
Tel. No. 712666 (3 Lines)

### Branches:

IPOH: Falim, Tel. 6104  
PENANG: 151-A, Presgrave Street, Tel. 25316  
BUTTERWORTH: 3204, Pantai Road, Tel. 31549  
KUANTAN: 43, D-2, Telok Sesik Road, Tel. 434  
JOHORE: 71-B, 4<sup>1</sup>/<sub>2</sub> m.s. Jalan Scudai, Tel. Tampoi 324  
MALACCA: 131, Jalan Kilang, Tel. 5365.



**SUPPORT LOCAL INDUSTRY**

KEPIMPINAN  
PERDANA